

**DOCKETED**

<b>Docket Number:</b>	21-IEPR-06
<b>Project Title:</b>	Building Decarbonization and Energy Efficiency
<b>TN #:</b>	239431
<b>Document Title:</b>	Presentation - E P A ' s B e n c h m a r k i n g a n d Standards Policy Toolkit and Support
<b>Description:</b>	S2.5A Katy Hatcher_EnergyStar
<b>Filer:</b>	Raquel Kravitz
<b>Organization:</b>	EnergyStar
<b>Submitter Role:</b>	Public
<b>Submission Date:</b>	8/23/2021 3:37:09 PM
<b>Docketed Date:</b>	8/23/2021



Benchmarking and Building Performance Standards Policy Toolkit

# EPA's Benchmarking and Building Performance Standards Policy Toolkit and Support

Katy Hatcher, ENERGY STAR Commercial & Industrial Branch

# Toolkit Sections



- Section 1 - Building Energy Benchmarking and Transparency: Overview for State and Local Decision Makers
- Section 2 - Building Performance Standards: Overview for State and Local Decision Makers
- Section 3 - State and Local Government Coordination: Benchmarking and Building Performance Standards
- Section 4 - Data Access: A Fundamental Element for Benchmarking and Building Energy Performance Policies
  - Data Access: Sample Policy Language
  - Data Access: How to Compile and Deliver Aggregate Whole-Building Data

# Building Performance Standards



A **building performance standard** is a policy that requires building owners to meet performance targets by actively improving their buildings over time.

- A BPS may be adopted by state or local governments and applied to existing commercial and multifamily buildings.
- Can be designed to improve performance for a variety of building aspects—including **energy use, water use, and emissions**—and send market signals to encourage investments in energy efficiency and other clean energy technologies and strategies.

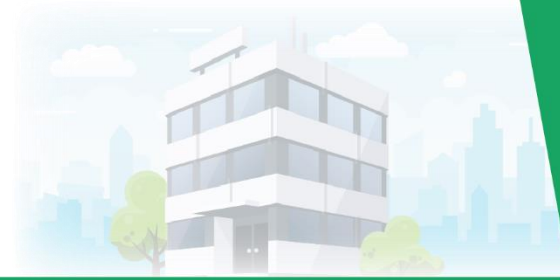
# ENERGY STAR Portfolio Manager



- The go-to tool for collecting energy and water use data from commercial and/or multifamily housing buildings.
- Fast facts:
  - The tool is completely cost-free to use.
  - Buildings can use the tool to track GHG emissions and energy, water, and waste costs.
  - 1-100 ENERGY STAR scores indicate a building's energy performance compared to similar buildings nationwide.
- Can be used to:
  - Check for possible errors using the data quality checker,
  - Set goals and track progress toward them,
  - Share or transfer properties,
  - Run custom and pre-populated reports, and
  - Apply for ENERGY STAR certification-EPA recognition for top performance.

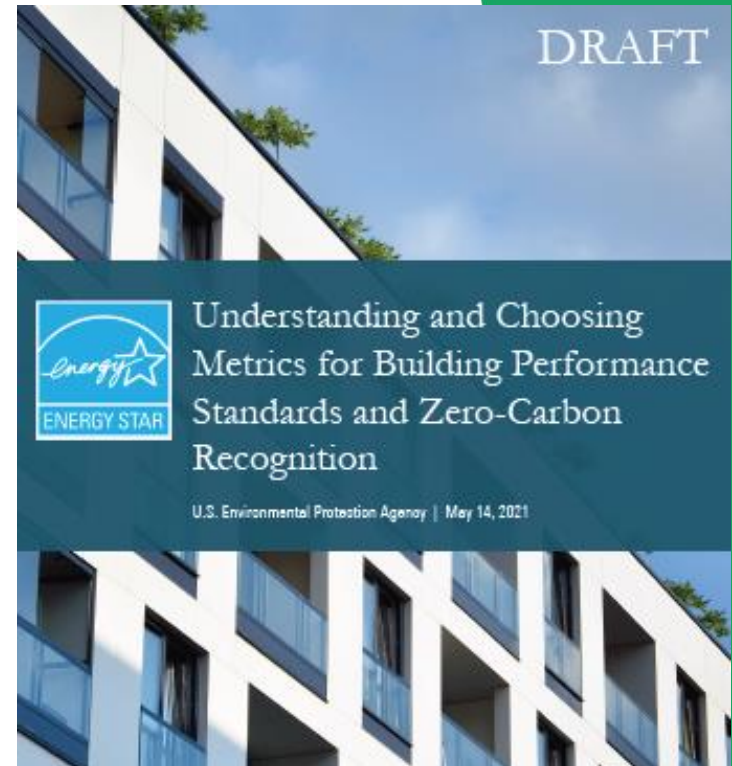


# White Paper



[https://www.energystar.gov/buildings/white\\_paper\\_metrics](https://www.energystar.gov/buildings/white_paper_metrics)

- **Section 1:** Framework for Guiding Choice of Metrics for Building Performance Standards
- **Section 2:** Detailed Descriptions of Metrics
- **Section 3:** Supporting Analysis and Discussion
- **Section 4:** Complementary Policy: Zero-Carbon Recognition
- **Section 5:** Next Steps



To submit comments, visit [www.surveymonkey.com/r/95pd792](http://www.surveymonkey.com/r/95pd792)

# Metrics Reviewed



## Energy efficiency metrics

- Site energy use intensity (EUI) and variations
- Source EUI and variations
- ENERGY STAR score

## Electrification metrics

- Percent of energy use that is from electricity
- Onsite greenhouse gas emissions

## Renewable electricity metrics

- Onsite green power
- Total green power (on or offsite)

## Greenhouse gas emissions metrics

- Total greenhouse gas emissions
- Onsite greenhouse gas emissions
- Time of use emissions

## Grid balancing-related metrics

- Peak demand
- Coincident peak demand

# Section 2 – BPS Design Considerations



## Align and Establish Goals

- Alignment with decarbonization goals
- Performance metrics



## Determine Covered Properties

- Property Types
- Exemptions and Accommodations



## Consider Compliance Approaches

- Compliance Approaches
- Enforcement for Non-compliance



## Provide Support to Building Owners

- Technical Support
- Funding Support



## Establish Reporting Requirements

- Reporting Mechanism
- Access to Historical Data
- Changes to metrics in Portfolio Manager



# Section 3 - Opportunities for State & Local Coordination



**Understanding Roles**



**Establishing Relationships**



**Setting Policy Goals**



**Creating a Covered Buildings List**



**Administering Programs**

- Reporting and compliance
- Flexibility for local governments
- Establishing fines
- Funding and staffing



**Ensuring Access to Data**

# Technical Support for State and Local Governments



EPA is available to provide technical support to state and local governments across all phases of policy development and implementation, including:

- Direct support for using EPA's ENERGY STAR<sup>®</sup> Portfolio Manager<sup>®</sup> tool
- Share best practices across governments
- Provide access to helpful resources
- Offer technical assistance related to quantifying the benefits of energy efficiency
- Deliver other policy support as needed

# Toolkit Sections



- Toolkit Homepage - <https://www.epa.gov/statelocalenergy/benchmarking-and-building-performance-standards-policy-toolkit>
- [\*\*Section 1: Building Energy Benchmarking and Transparency: Overview for State and Local Decision Makers\*\*](#). Provides information about benchmarking and transparency policies, describes key considerations for success, and demonstrates how government leaders have used benchmarking to help enact a BPS.
- [\*\*Section 2: Building Performance Standards: Overview for State and Local Decision Makers\*\*](#). Provides an overview of building performance standards and offers information on key decision points to consider when designing a BPS.
- [\*\*Section 3: State and Local Government Coordination: Benchmarking and Building Performance Standards\*\*](#). Describes the varied roles that state and local decisions makers have in establishing existing building policies and opportunities to coordinate across jurisdictions.
- [\*\*Section 4: Data Access: A Fundamental Element for Benchmarking and Building Energy Performance Policies\*\*](#). Describes the critical role utilities play in providing whole-building energy consumption data to enable compliance with benchmarking and BPS polices.
  - [\*\*Data Access: Sample Policy Language\*\*](#). Fact sheet that offers sample policy language to support utility data access.
  - [\*\*Data Access: How to Compile and Deliver Aggregate Whole-Building Data\*\*](#). Fact sheet that describes technical considerations that utilities must work through to successfully compile and deliver aggregate whole-building data.

# Please be in touch!

[hatcher.caterina@epa.gov](mailto:hatcher.caterina@epa.gov)

