

<b>DOCKETED</b>	
<b>Docket Number:</b>	19-MISC-02
<b>Project Title:</b>	Commissioner Workshop on Funding Opportunities and Improving Access to Native American Tribes
<b>TN #:</b>	228335
<b>Document Title:</b>	Presentation - Energy Equity Indicators
<b>Description:</b>	Information on Energy Equity Indicators that was presented at the 5/14 workshop.
<b>Filer:</b>	Jessica Bonitz
<b>Organization:</b>	California Energy Commission
<b>Submitter Role:</b>	Commission Staff
<b>Submission Date:</b>	5/21/2019 11:06:46 AM
<b>Docketed Date:</b>	5/21/2019

# Energy Equity Indicators

## Overview

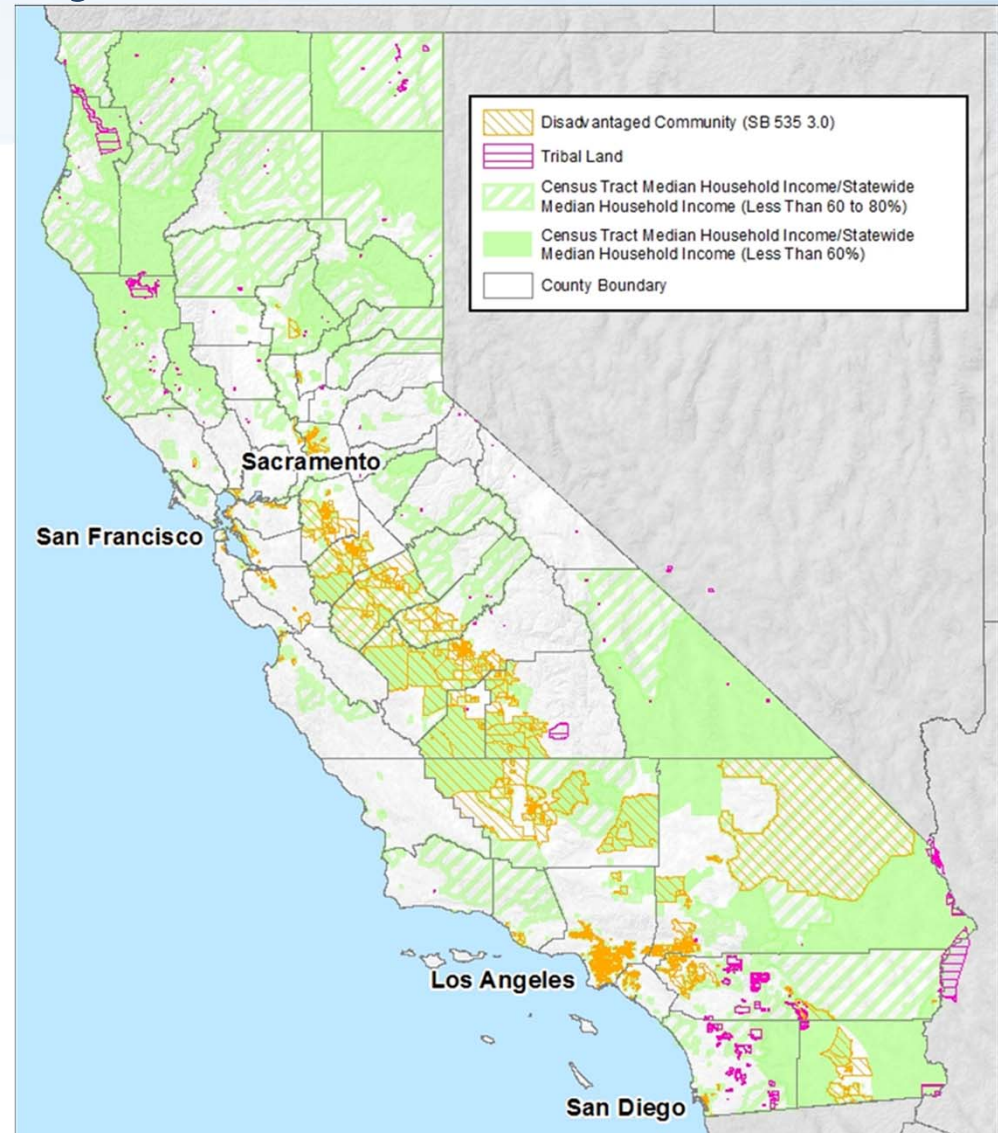


Kristy Chew  
May 14, 2019  
California Energy Commission  
[Kristy.Chew@energy.ca.gov](mailto:Kristy.Chew@energy.ca.gov)  
916-654-4818



# Energy Equity Indicators: Purpose

- Build on SB 350 Low-Income Barriers Study
- Highlight opportunities to expand clean energy access, investment, and resilience in low-income and disadvantaged communities
- Point to key data gaps, e.g., Census has limited data about tribes



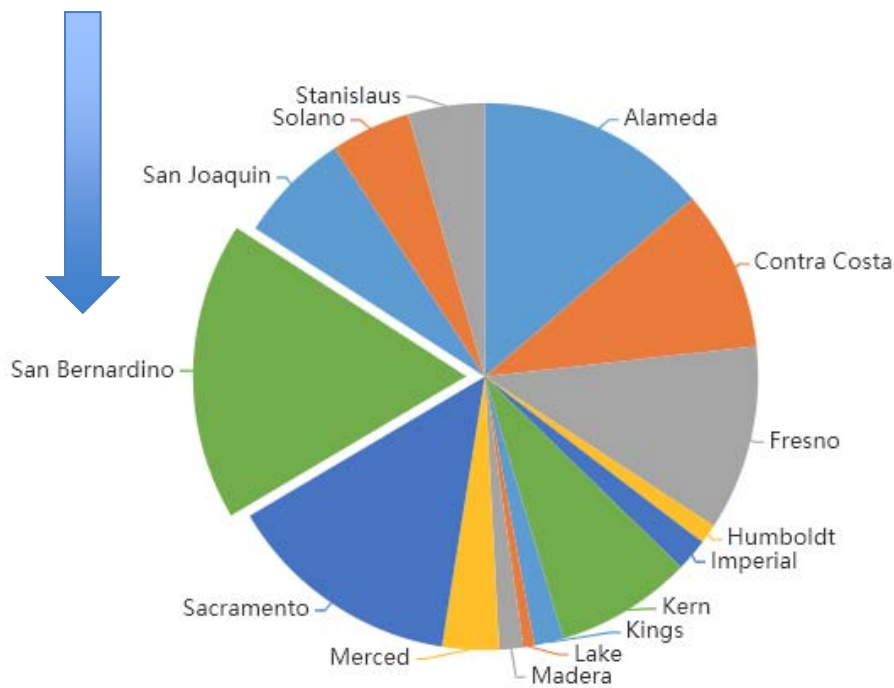
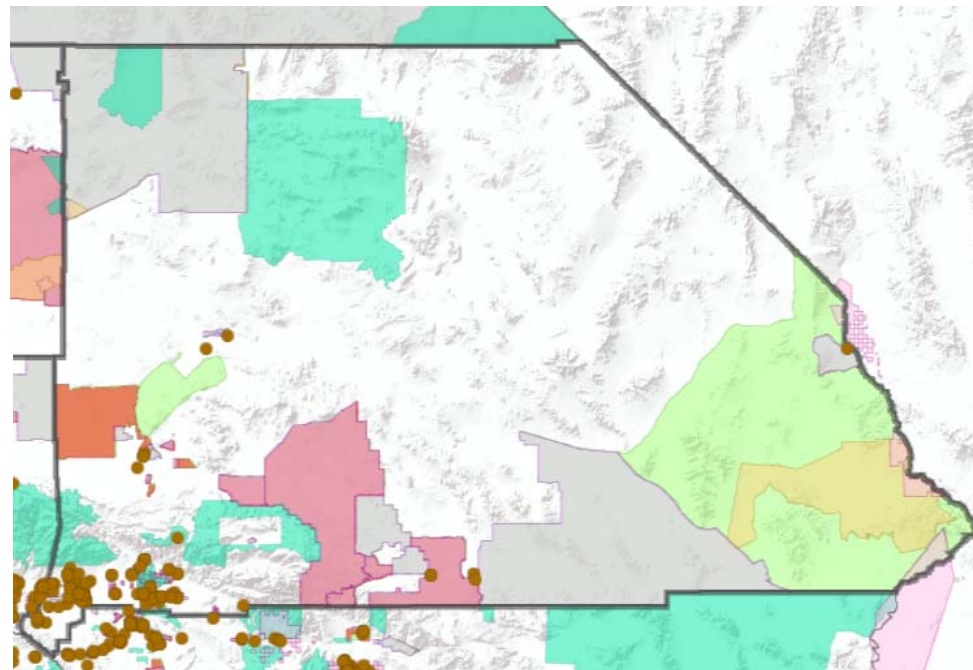
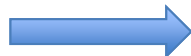
Data Sources: U.S. Census Bureau 2010 census tract boundaries; 2011-2015 American Community Survey (ACS) 5-year estimates; Bureau of Indian Affairs Pacific Regional Office 2017; CalEnviroScreen 3.0, 2017



# Data Show Opportunities for Outreach and Investment

Emergency  
Department  
Rates Due to Asthma  
(2015)  
Per County

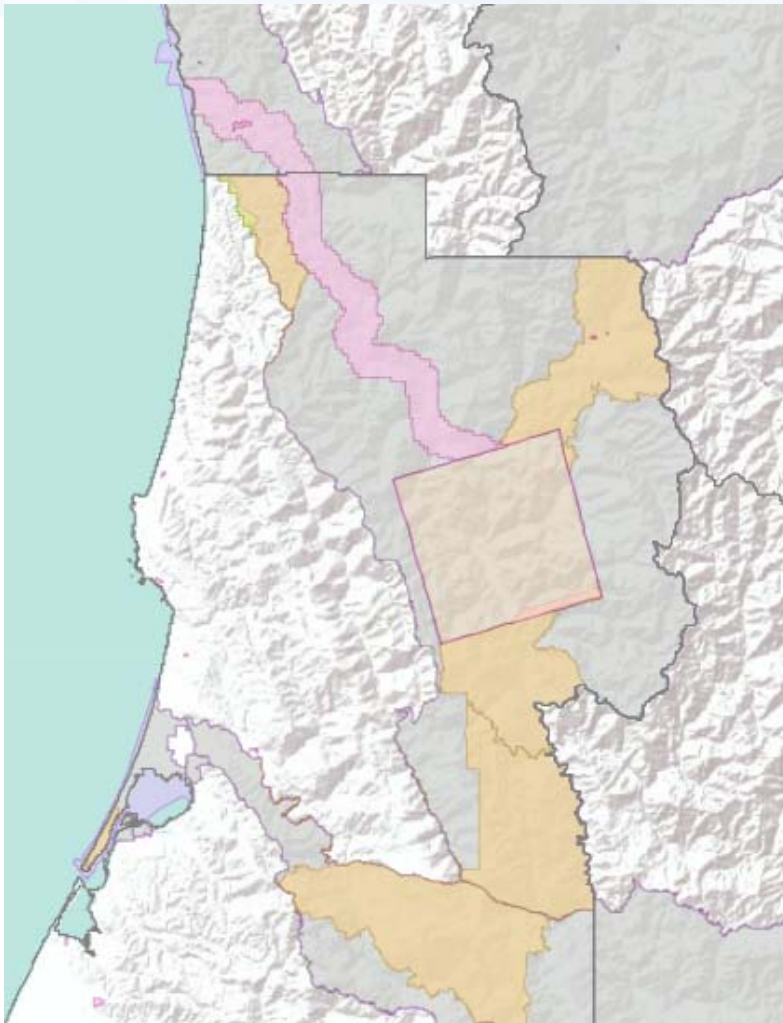
Low-income Areas  
with Older Homes,  
Low Efficiency, Low  
Solar, and Low EV  
Rebates






Data Sources: CPUC – California Energy Data and Reporting System (CEDARS), May 18, 2018; California Distributed Generation Statistics; California Clean Vehicle Rebate Project; Energy Commission analysis based on CPUC historical data; California Environmental Health Tracking Program; U.S. Census Bureau 2010 census tract boundaries; 2011-2015 American Community Survey (ACS) 5-year estimates; Bureau of Indian Affairs Pacific Regional Office 2017; Electric Alternative Fuel Station (public); Esri zip codes.



# Data Show Opportunities for Outreach and Investment



-  Tribal Land (Federally Recognized)
-  CEDARS (2016-2017) residential kWh/yr by zip code is than 655 (lowest 20%) and intersects low-income (less than 60% of statewide median income) census tracts
-  70% of structures built before 1989 within low-income (less than 60% of statewide median income) census tracts

Sources: CPUC – California Energy Data and Reporting System (CEDARS), May 18, 2018; U.S. Census Bureau 2010 census tract boundaries; 2011-2015 American Community Survey (ACS) five-year estimates; Bureau of Indian Affairs Pacific Regional Office 2017





# More Information

- Energy Equity Indicators  
[http://www.energy.ca.gov/sb350/barriers\\_report/equity-indicators.html](http://www.energy.ca.gov/sb350/barriers_report/equity-indicators.html)
- Energy Commission Low-Income Barriers Study, Part A  
[http://www.energy.ca.gov/sb350/barriers\\_report/](http://www.energy.ca.gov/sb350/barriers_report/)
- California Air Resources Board Clean Transportation Access Guidance Document (Barriers Study, Part B)  
<https://www.arb.ca.gov/msprog/transoptions/transoptions.htm>
- SB 350 Disadvantaged Communities Advisory Group  
<http://www.energy.ca.gov/sb350/DCAG/>
- Energy Commission Project Map and Project Equity Dashboard  
[https://www.energy.ca.gov/efficiency/financing/map\\_equity\\_dashboard.html](https://www.energy.ca.gov/efficiency/financing/map_equity_dashboard.html)