

## DOCKETED

<b>Docket Number:</b>	17-IEPR-11
<b>Project Title:</b>	Southern California Energy Reliability
<b>TN #:</b>	222451
<b>Document Title:</b>	Aliso Canyon Winter Risk Assessment Technical Report 2017-18 Supplement February Situational Update
<b>Description:</b>	Aliso Canyon Winter Risk Assessment Technical Report 2017-18 Supplement: February Situational Update
<b>Filer:</b>	Lana Wong
<b>Organization:</b>	California Energy Commission
<b>Submitter Role:</b>	Commission Staff
<b>Submission Date:</b>	2/7/2018 1:48:27 PM
<b>Docketed Date:</b>	2/7/2018

**Aliso Canyon Winter Risk Assessment Technical Report  
2017-18 Supplement:**

**February Situational Update**

**Prepared by the Staff of the California Public Utilities Commission, the California Energy Commission, the California Independent System Operator, and the Los Angeles Department of Water and Power**

**February 7, 2018**

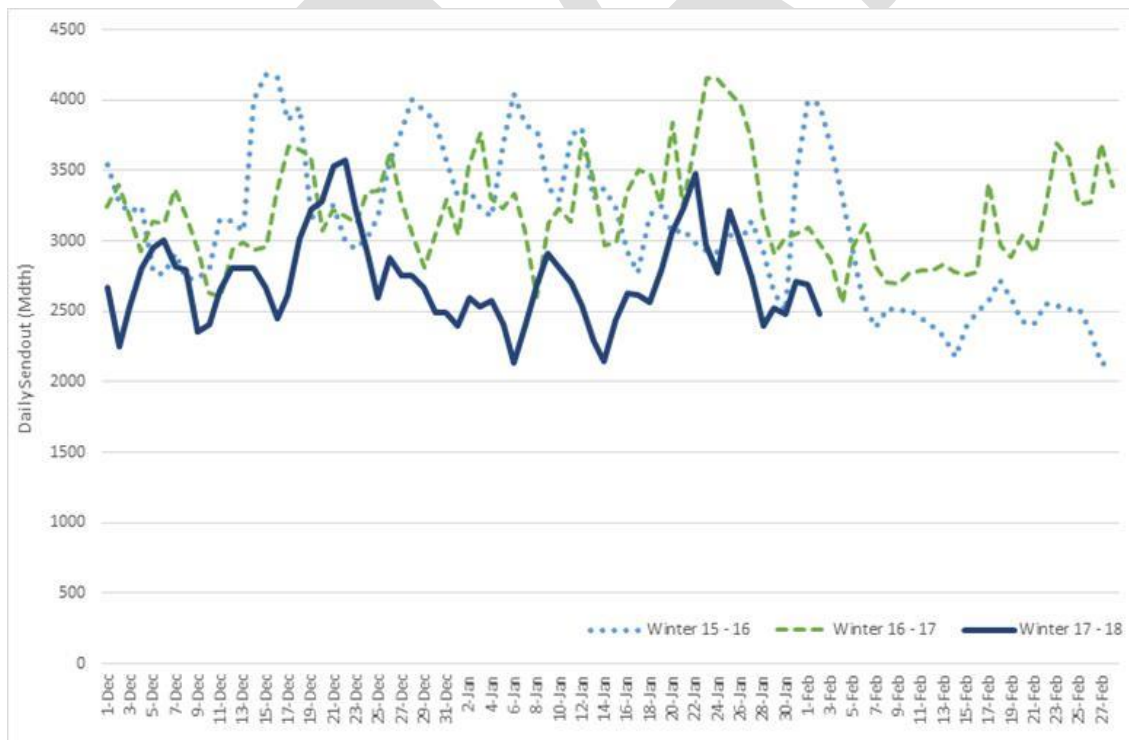
**DRAFT**

# Aliso Canyon Winter Risk Assessment Technical Report 2017-18 Supplement February Situational Update

This February Situational Update reports that most of the winter curtailment risk identified in the *Aliso Canyon Winter Risk Assessment Technical Report 2017-18 Supplement*, November 28, 2017<sup>1</sup> is now gone. Warm temperatures that continued through January (after a warm November and December), kept demand below normal on most days during the period. This allowed SoCalGas to serve a large portion of demand using receipts of pipeline gas instead of using gas from underground storage. From a December 31 inventory of 63.8 Bcf, SoCalGas pulled only 5.3 Billion Cubic Feet (Bcf) from storage on a net basis during January; this resulted in a February 1 reported inventory for all four SoCalGas fields of 58.4 Bcf. This February 1, 2018 inventory is nearly 15 Bcf more than the 43.8 Bcf in inventory on February 1, 2017.

Figure 1 below illustrates how the warm temperatures have translated to lower demand for natural gas (sendout) this winter. It shows daily sendout for each day beginning December 1 for this and the prior two winters. Only on 12 of the 62 days in December and January, has sendout this winter exceeded that of the prior two. Average sendout has been 2,737 thousand decatherms (MDth), over 500 MDth lower than the 3,280 MDth for the same 62 days in winter 2016-17 and 3,298 in winter 2017-18.

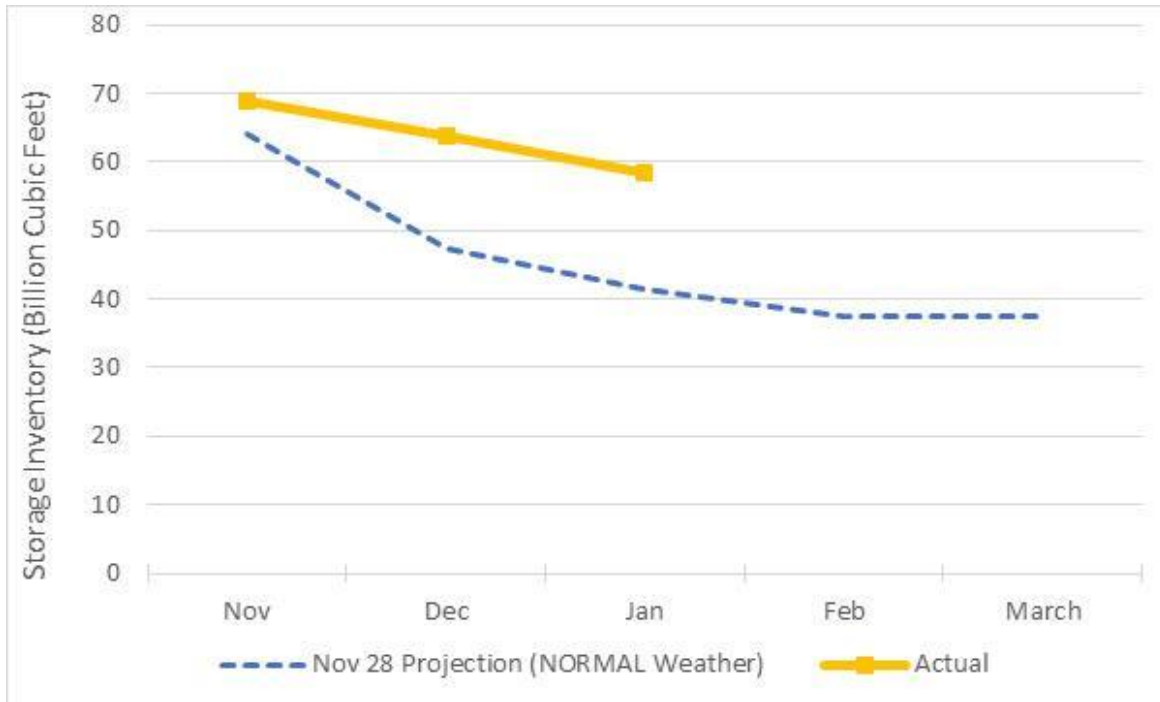
**Figure 1: Daily Sendout**



<sup>1</sup> [http://docketpublic.energy.ca.gov/PublicDocuments/17-IEPR-11/TN221863\\_20171128T103411\\_Aliso\\_Canyon\\_Winter\\_Risk\\_Assesment\\_Technical\\_Report\\_201718\\_Supp.pdf](http://docketpublic.energy.ca.gov/PublicDocuments/17-IEPR-11/TN221863_20171128T103411_Aliso_Canyon_Winter_Risk_Assesment_Technical_Report_201718_Supp.pdf)

The resulting impact on storage inventories is shown in Figure 2. The dotted line shows the storage inventories projected for normal temperatures as projected in the November 28 supplemental analysis. The shorter, solid line provides the actual inventories reported at each month-end.

**Figure 2: Month-End Storage Inventory**



The warm conditions experienced so far this winter have significantly contributed to SoCalGas avoiding the need to withdraw the quantities of gas it would in a normal (or cold) temperature winter. Assuming no additional gas system or electric transmission system outages and that full supplies arrive at the pipeline receipt points, the risk of gas service curtailments for the rest of this winter is greatly diminished. With the critical winter months behind and 58 Bcf still in storage, this update will be the last one for the season.