

California Energy Commission

DOCKETED

13-IEP-1H

TN 71915

AUG 27 2013

Incorporating Ecological Considerations into Distributed Generation Planning

Erica Brand, The Nature Conservancy

Presented August 22, 2013

CEC Staff IEPR Workshop

The Nature Conservancy
Protecting nature. Preserving life.



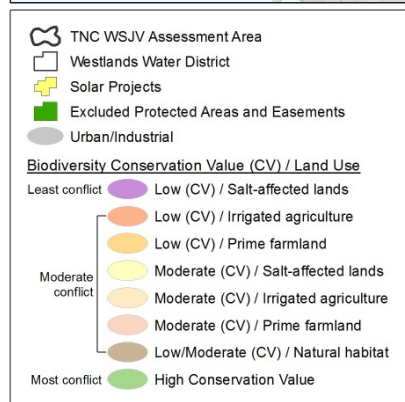
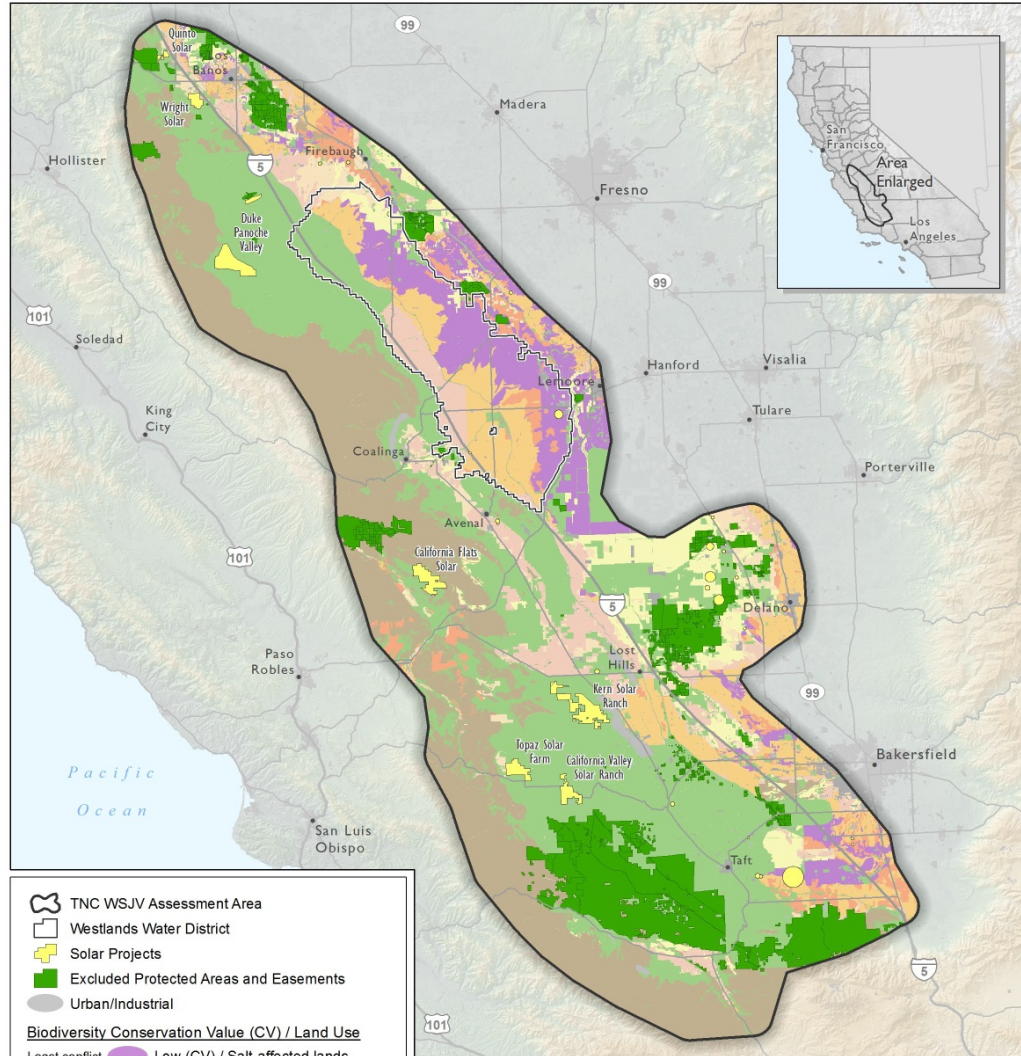
The Nature Conservancy California Renewable Energy Initiative

- Apply conservation science as the foundation of our energy program.
- Support a multi-pronged approach to meeting California's renewable energy goals.

Incorporating Ecological Data into Energy Planning

1. Best approach for achieving multiple goals
2. Reduce uncertainty and minimize project viability risks
3. Improved conservation results

WESTERN SAN JOAQUIN VALLEY SOLAR ASSESSMENT
LEAST CONFLICT ASSESSMENT AND SOLAR PROJECT SITING



Data sources:
 High conservation value
 Moderate-High suitability kit fox habitat (ESRP 2012)
 High permeability kit fox areas (ESRP 2008)
 Kit fox core recovery areas (FWS 2007)
 Wetlands (NWI, USGS 2011)
 Carrizo Plain solar mitigation lands (First Solar, Sunpower 2012)
 Moderate conservation value
 Kit fox satellite and linkage areas (FWS 2007)
 IBAs (Audubon 2004)
 TNC portfolio (TNC 2006-2012)
 Serpentine soils (rare plant proxy) (DMG 1977, SSURGO 2012)
 CRRC Essential Areas for rangeland conservation (2007)

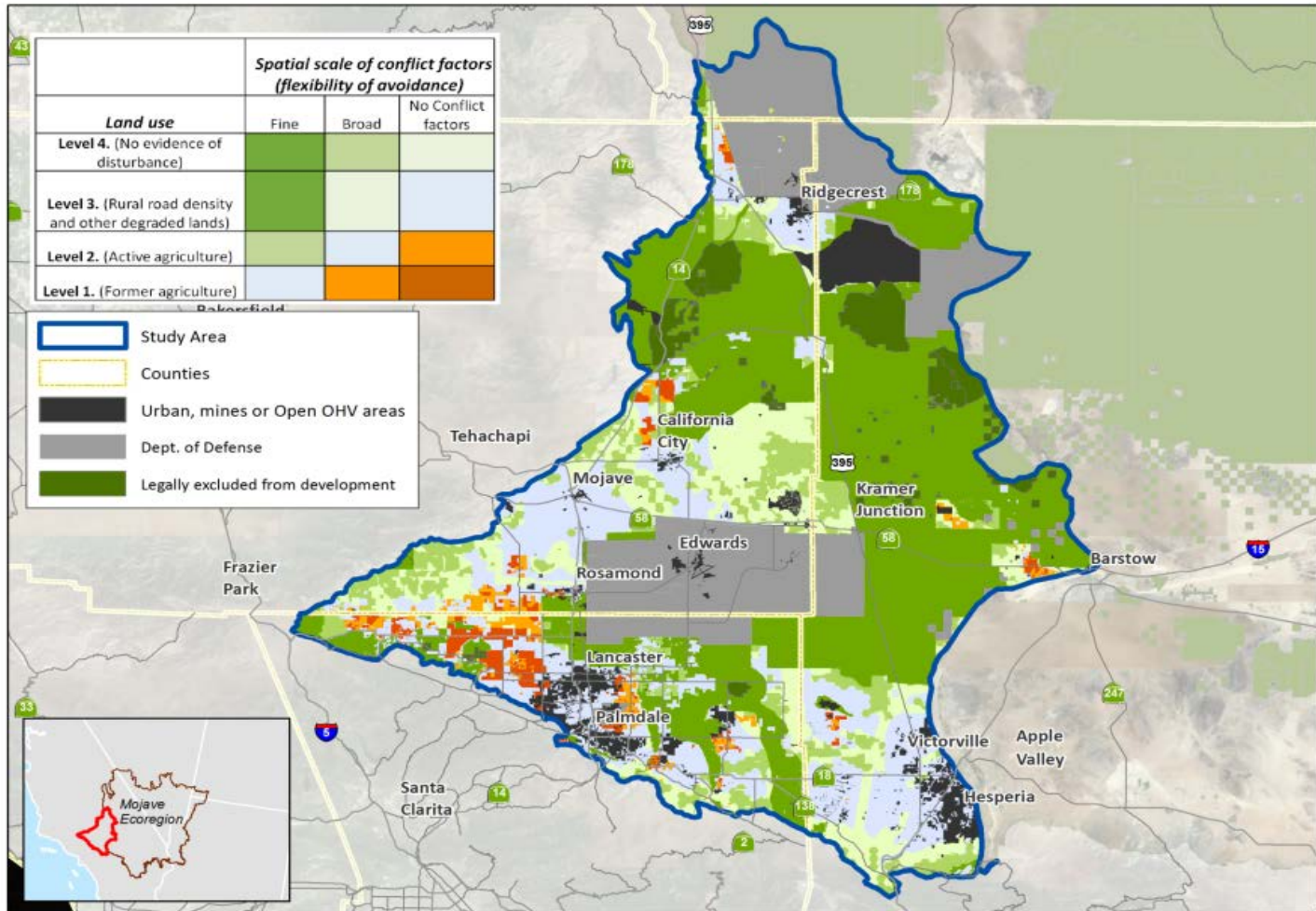
Land use
 Prime Farmland (FMMP 2008)
 Salt-affected soils (NRCS 2012)
 Urban/Industrial (DWR/ESRP 2012)
 Irrigated Agriculture (DWR/ESRP 2012)
 Excluded Protected Areas and Easements
 GreenInfo Network (2012), The Nature Conservancy (2013)

0 5 10 20 Miles

Map created by TNC, California Science, June 2013
 N:\Central_Coast\Projects\JSJV_solar\mxd\wsjv_solar_projects_LC.mxd

Western San Joaquin Valley Least Conflict Assessment

West Mojave Least Environmental Conflict Assessment



The Nature Conservancy's Guiding Conclusion

*It is possible to meet renewable energy
goals and protect species, communities &
ecosystems.*

