

**From:** [Robert.Mason@CH2M.com](mailto:Robert.Mason@CH2M.com) [<mailto:Robert.Mason@CH2M.com>]

**Sent:** Friday, March 08, 2013 10:53 AM

**To:** Miller, Felicia@Energy

**Cc:** [Jerry.Salamy@CH2M.com](mailto:Jerry.Salamy@CH2M.com); [Cindy.Salazar@CH2M.com](mailto:Cindy.Salazar@CH2M.com)

**Subject:** AES HBEP - Response to E-Mail Request from CEC Staff on Use and Number of Stories for Specific HBEP Building

Felicia,

Please see below for information requested by Steve Kerr regarding the number of floors/stories for specific onsite buildings as well as responses to Lisa Worrall's January 17, 2013 inquiries related to HBEP:

Informal E-Mail Request: From Lisa Worrall CEC – January 17, 2013

*I know Steve Kerr needs to know how many floors are in all the on-site buildings. I also need to know how many floor there are in these buildings too.*

*I need to find out from the applicant which buildings on the site are more than one story to calculate the floor area ratio (FAR), do you know who the best person to ask would be?*

*Specifically, on Figure 2.1-1 General Arrangement/Site Plan of the AFC, how many stories are No. 32, 33, 34, and 37 are on the Equipment List? (The actual building heights are listed, but a 35' warehouse might be one story, whereas a 40' admin building might be 4 stories.) Also for No. 32, what does "RO/EDI" building stand for? Thank you, Lisa Worrall*

**Applicant's Response:**

Existing Building No. 32 – RO/EDI (reverse osmosis/electro-deionization) Building (Reuse) is a single story water treatment system building the existing HBGS that produces high quality industrial water for onsite use. As noted on Figure 2.1-1 General Arrangement/Site Plan from the AFC, this facility will be used to produce high quality industrial water for HBEP. This building houses equipment only and does not include administrative space.

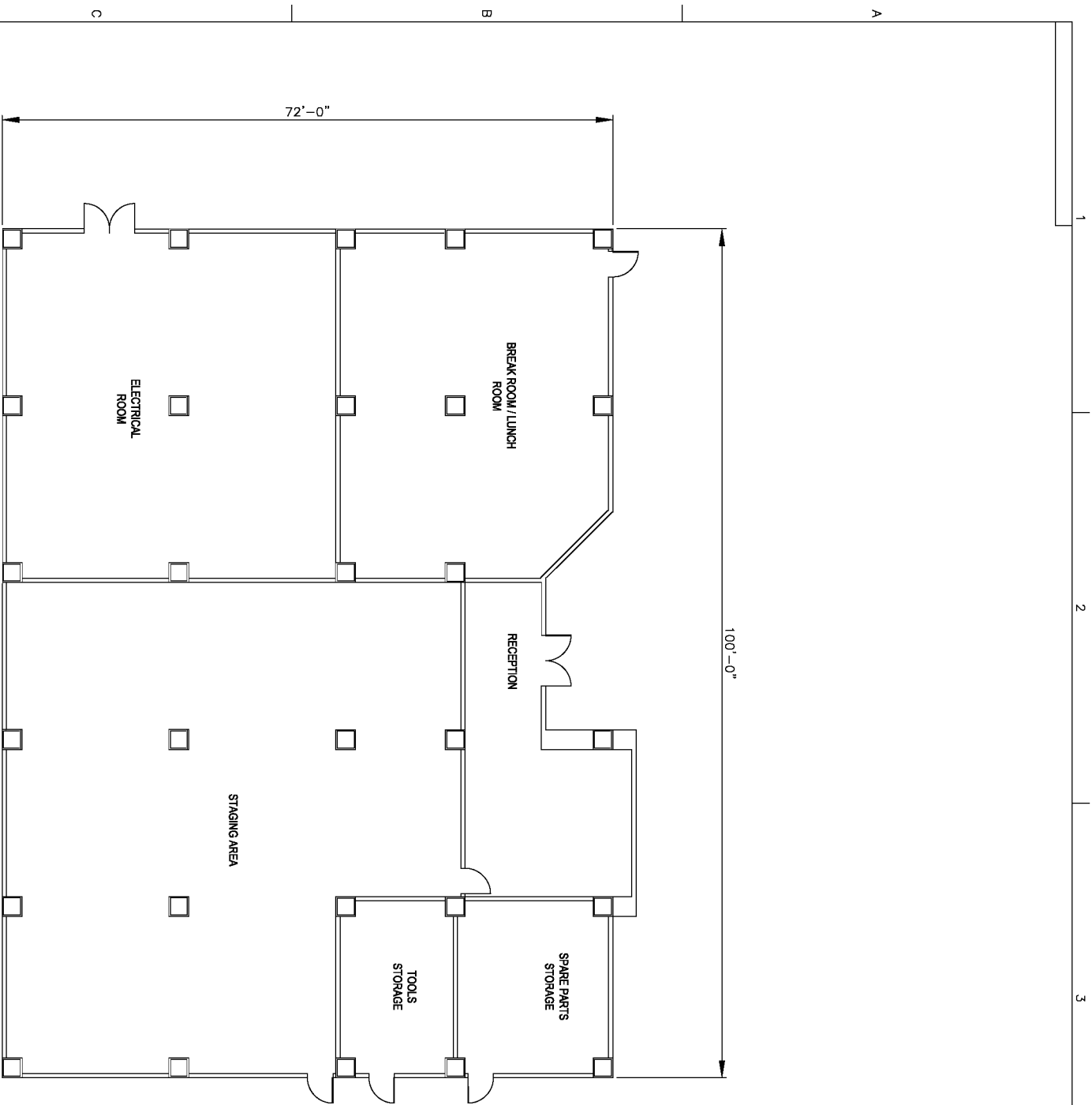
New Building No. 33 – New Control/Admin Building (see attached Drawing – Huntington Beach Energy Project New Control/Administration Building Preliminary Architectural Plan [Note: this is a reduced size drawing and the bar scale does not = 1 inch]). As shown on the drawing, it is a new two-story building, with each floor consisting of 7,200 sq feet. As noted, the Ground Level floor includes an electrical room, storage, a staging area and break room. The First Level (2<sup>nd</sup> floor) includes office space, worker locker space, a control room and equipment rooms. It is a mix of industrial space, operational support space and office space.

New Building No. 34 – New Maintenance/Warehouse Building (see attached Drawing – Huntington Beach Energy Project New Maintenance/Warehouse Building Preliminary Architectural Plan [Note: this is a reduced size drawing and the bar scale does not = 1 inch]). As shown on the drawing, it is a new one-story building consisting of 4,320 sq feet. This is an industrial use building.

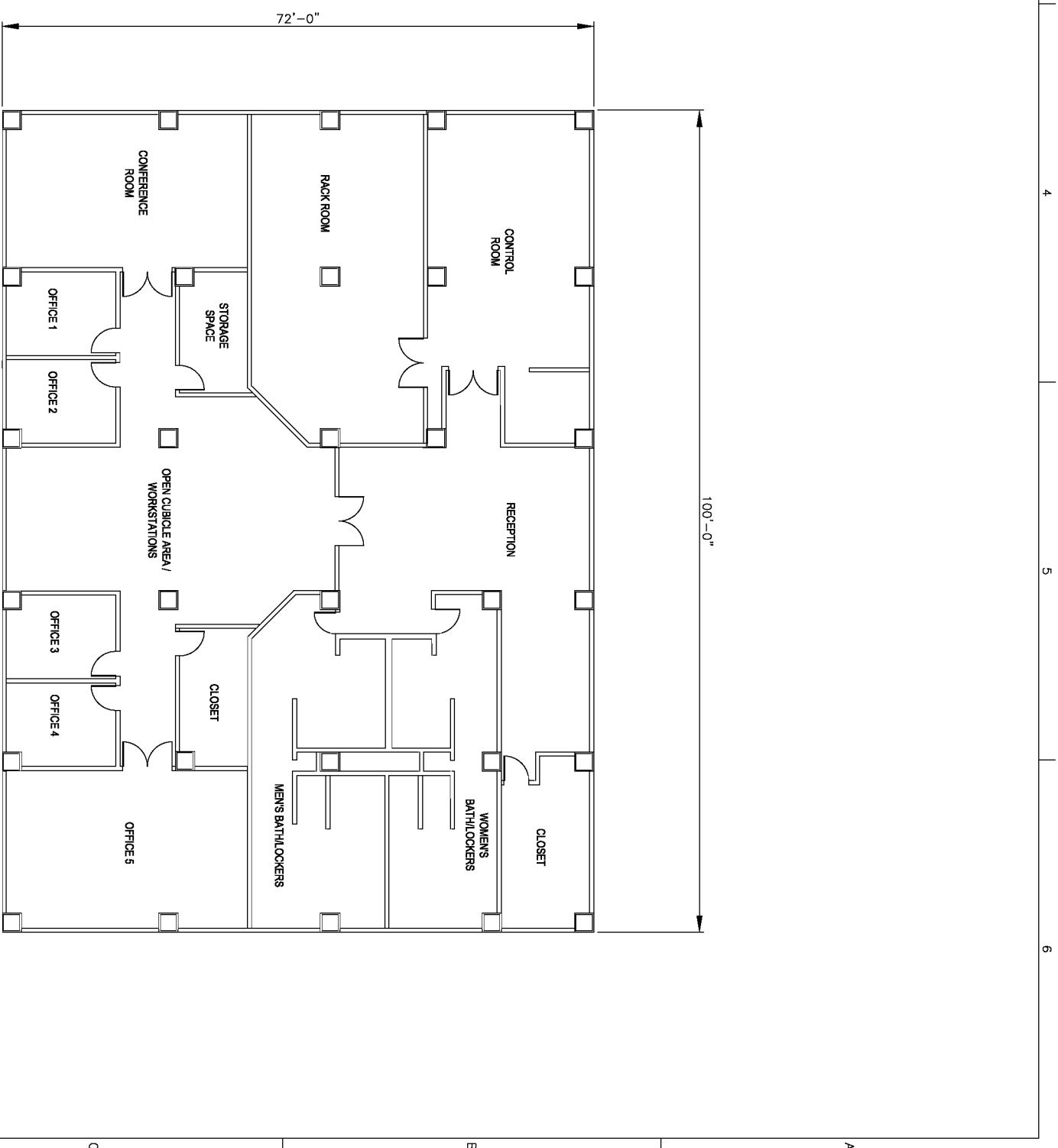
Existing Building No. 37 – Existing Shops and Warehouse is a one story industrial building (24,610 sq feet).

Thanks

Robert



GROUND LEVEL



FIRST LEVEL

REV	DATE	DESCRIPTION	DWN	DSN	CHK	APP
A	2/12/13	PRELIMINARY - FIRST ISSUE	LA	-	-	HL

SCALE: 1/8"=1'-0"

WARNING: IF THIS BAR DOES NOT MEASURE 1" THEN DRAWING IS NOT TO SCALE

D SIZE 36"x24"

**Power Engineers Collaborative, L.L.C.**  
 600 West Jackson Boulevard  
 Chicago, Illinois 60661  
 WWW.PECCOL.COM

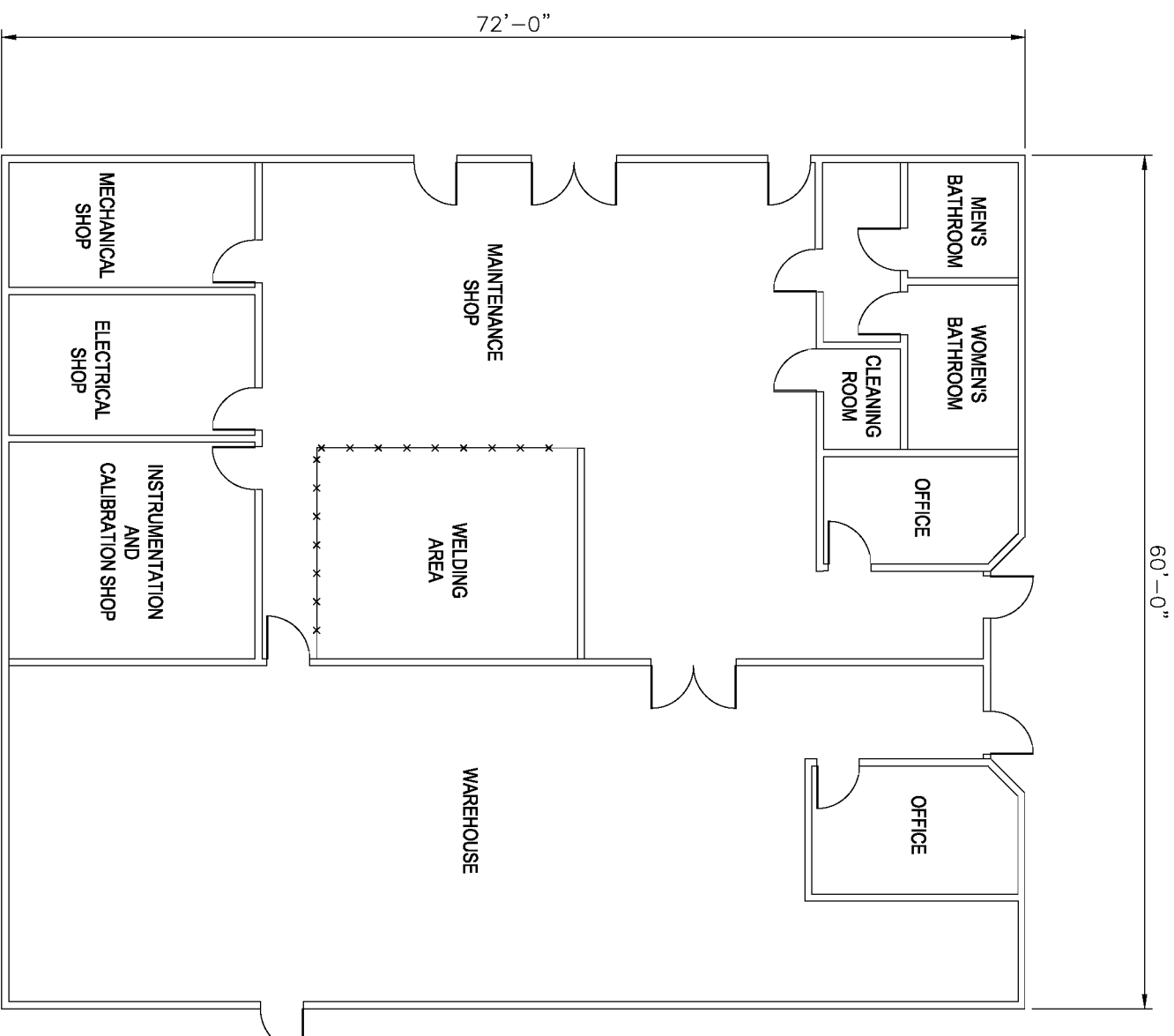
150 North Sunway Slope Road  
 Suite 110  
 Brookfield, Wisconsin 53005

**HUNTINGTON BEACH ENERGY PROJECT**  
**HUNTINGTON BEACH, CA**

**HUNTINGTON BEACH ENERGY PROJECT**  
**NEW CONTROL / ADMINISTRATION BUILDING**  
**PRELIMINARY ARCHITECTURAL PLAN**

DWG# \_\_\_\_\_

REV. **A**



**PRELIMINARY  
ARCHITECTURAL PLAN**

REV	DATE	DESCRIPTION	DWN	DSN	CHK	APP
A	2/12/13	PRELIMINARY - FIRST ISSUE	LA	-	-	HL

SCALE: 3/16"=1'-0"

WARNING: IF THIS BAR DOES NOT MEASURE 1" THEN DRAWING IS NOT TO SCALE

D SIZE: 36"x24"

**Power Engineers Collaborative, L.L.C.**  
600 West Jackson Boulevard  
Chicago, Illinois 60661  
www.pcoll.com

150 North State Street  
Suite 110  
Brookfield, Wisconsin 53005

**HUNTINGTON BEACH ENERGY PROJECT  
HUNTINGTON BEACH, CA**

**HUNTINGTON BEACH ENERGY PROJECT  
NEW MAINTENANCE / WAREHOUSE BUILDING  
PRELIMINARY ARCHITECTURAL PLAN**

DWG# \_\_\_\_\_ REV. **A**