

CALIFORNIA ENERGY COMMISSION1516 Ninth Street, MS-15
Sacramento, California 95814Main website: www.energy.ca.gov

Notice of Data Request and Issues Resolution Workshop for the Rio Mesa Solar Electric Generating Facility (11-AFC-4)

The California Energy Commission staff will conduct a Data Request and Issues Resolution Workshop for the proposed Rio Mesa Solar Electric Generating Facility (Rio Mesa SEGF). All interested agencies and members of the public are invited to participate.

The workshop will be held:

TUESDAY, March 13, 2012
Beginning at 10:30AM

California Energy Commission
Hearing Room B
1516 9th Street
Sacramento, CA 95814-5512
(wheelchair accessible, map attached)

DOCKET
11-AFC-4
DATE 3-1-12
RECD. 3-1-12

WebEx and Conference Call-in toll-free number: **1-866-469-3239**

Access code: **929 897 087**

Meeting Password: **meeting@1030**

(please see attached instructions for WebEx and Conference Call access)

PURPOSE

The purpose of the workshop is to allow staff, the applicant, interested agencies, and the public the opportunity to discuss biological resources related to the project, including data requests filed by staff on February 27, 2012.

BACKGROUND

On October 14, 2011, BrightSource Energy, Inc., submitted an Application for Certification (AFC) to construct and operate the Rio Mesa Solar Electric Generating Facility (Rio Mesa SEGF). On December 14, 2011, the Energy Commission approved the Executive Director's recommendation that the AFC was deemed complete for purposes of commencing the Commission's siting review process. A portion of the proposed Rio Mesa SEGF is located on Federal land administered by the Bureau of Land Management (BLM). The Energy Commission and BLM are conducting a joint state and federal environmental review of the Rio Mesa SEGF. The Energy Commission staff and BLM staff have begun their discovery and analysis of the Rio Mesa SEGF project. The staff will use the information obtained from the workshop discussions to prepare its Preliminary Staff Assessment/Draft Environmental Impact Statement for the project.

PROOF OF SERVICE (REVISED 3/1/12) FILED WITH
ORIGINAL MAILED FROM SACRAMENTO ON 3/1/12

PROJECT DESCRIPTION

As proposed, Rio Mesa SEGF would comprise three solar fields and associated facilities encompassing a total of approximately 5,750 acres and would be located on the Palo Verde Mesa in Riverside County, California, approximately 13 miles southwest of the City of Blythe. If approved, each solar plant would generate 250 megawatts (MW), for a total net output of 750 MW and would use heliostats – elevated mirrors guided by a tracking system mounted on pylons – to focus the sun's rays on a receiver steam generator located atop a 750-foot tall solar power tower near the center of each solar field. Each solar plant would utilize approximately 85,000 heliostats.

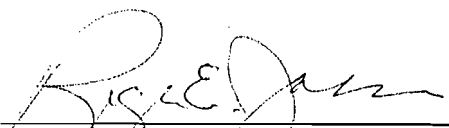
PARTICIPATION

Please direct your technical or project schedule questions to Pierre Martinez, Energy Commission Project Manager, at (916) 651-3765, or by e-mail at pmartine@energy.ca.gov. If you desire information on participating in the Energy Commission's review of the project, please contact the Energy Commission's Public Adviser's Office, at (916) 654-4489 or toll free in California, at (800) 822-6228. The Public Adviser's Office can also be contacted via email at pao@energy.ca.gov. If you have a disability and require assistance to participate, please contact Lou Quiroz at (916) 654-5146 or via email at lquiroz@energy.ca.gov at least five days in advance.

News media inquiries should be directed to the media office at (916) 654-4989 or via email at mediaoffice@energy.ca.gov. The staff's Data Requests, status of the proposed project, copies of notices, an electronic version of the AFC, and other relevant documents are also available on the project web site: <http://www.energy.ca.gov/sitingcases/riomesa/index.html>. If you are unable to attend the workshop, written comments may be sent to the staff's project manager electronically or at the Energy Commission's street address shown on the letterhead of this Notice.

You can also subscribe to receive e-mail notification of all notices and announcements from the project website through the List Server. By being on this email list, you will receive all project-related notices and documents pertaining to the project's evaluation and review.

Date: 3/1/12



ROGER E. JOHNSON, Deputy Director
Siting, Transmission & Environmental
Protection Division

cc: Docket (11-AFC-4)
Proof of Service List
Property Owner List No. 7412
Agency List No. 7413
Library List No. 7414

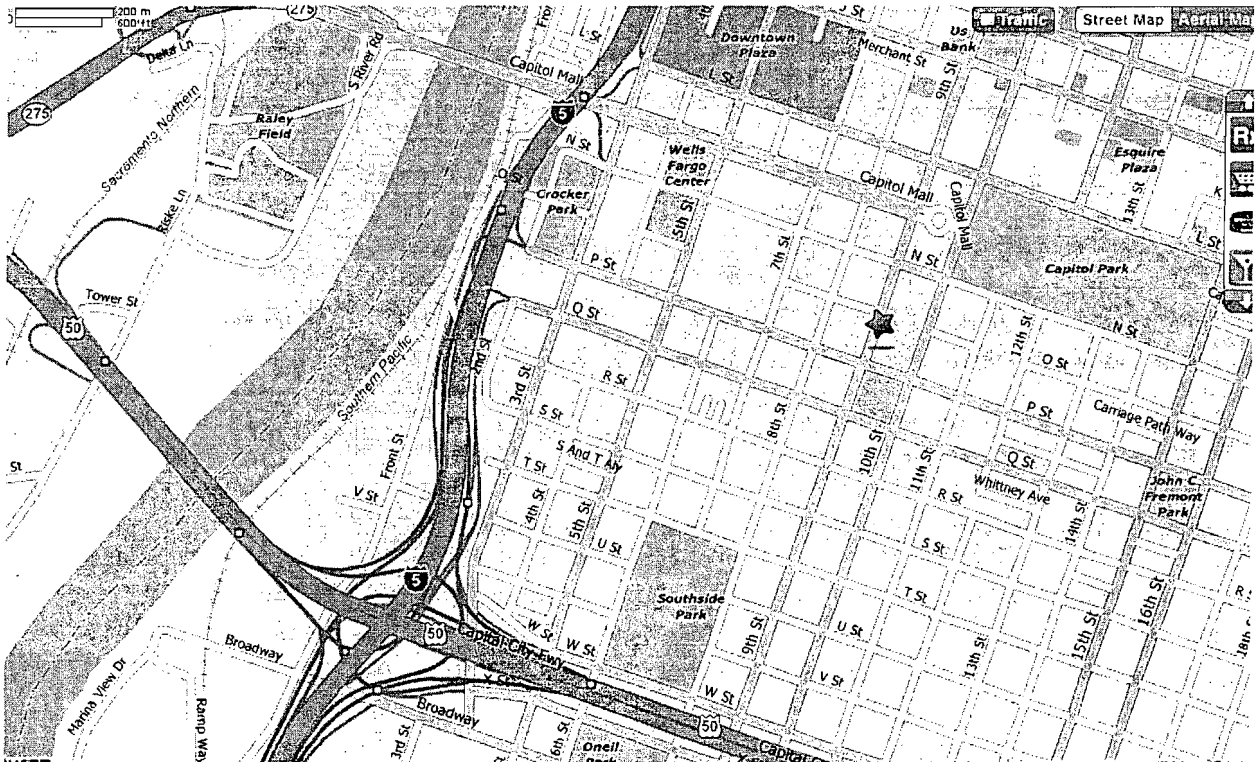
**ENERGY COMMISSION STAFF
DATA REQUEST AND ISSUES RESOLUTION WORKSHOP
RIO MESA SOLAR ELECTRIC GENERATING FACILITY
(11-AFC-4)**

**TUESDAY, March 13, 2012
Beginning at 10:30AM**

**California Energy Commission
Hearing Room B
1516 9th Street
Sacramento, CA 95814-5512
(wheelchair accessible, map attached)**

WebEx Call-in toll-free number: **1-866-469-3239**
Access code: **929 897 087**
Meeting Password: **meeting@1030**

(please see attached instructions for WebEx)



PARTICIPATION IN THE

March 13, 2012

ENERGY COMMISSION DATA REQUEST AND ISSUES RESOLUTION WORKSHOP RIO MESA SOLAR ELECTRIC GENERATING FACILITY (11-AFC-4)

THROUGH WEBEX

1. COMPUTER LOG-ON WITH A DIRECT PHONE NUMBER:

- Please go to <https://energy.webex.com> and enter **929 897 087**
- When prompted, enter your information and **meeting@1030**

After you login, a prompt will appear on-screen for you to provide **your** phone number.
In the **Number box**, type your area code and phone number and click **OK**.

You will receive a call back on your phone for the audio portion of the meeting.

2. COMPUTER LOG-ON FOR CALLERS WITH AN EXTENSION PHONE NUMBER, ETC.:

- Please go to <https://energy.webex.com> and enter **929 897 087** and **meeting@1030**
- After you login, a prompt will ask for your phone number. Click **"CANCEL."**
- Instead call **1-866-469-3239**. When prompted, enter **929 897 087** and your unique Attendee ID number which is listed in the top left area of your computer screen after you login.

3. TELEPHONE ONLY (NO COMPUTER ACCESS):

- Call **1-866-469-3239** and when prompted enter **929 897 087**

If you have difficulty joining the meeting, please call the WebEx Technical Support number at **1-866-229-3239**. To see if your computer is compatible, visit [<http://support.webex.com/support/systemrequirements.html>]. Please be aware that the meeting's WebEx audio and on-screen activity may be recorded.

WebEx Call-in toll-free number: **1-866-469-3239**

WebEx Access code: **929 897 087**

WebEx Meeting Password: **meeting@1030**



BEFORE THE ENERGY RESOURCES CONSERVATION AND DEVELOPMENT
COMMISSION OF THE STATE OF CALIFORNIA
1516 NINTH STREET, SACRAMENTO, CA 95814
1-800-822-6228 – WWW.ENERGY.CA.GOV

**APPLICATION FOR CERTIFICATION
FOR THE RIO MESA SOLAR
ELECTRIC GENERATING FACILITY**

DOCKET NO. 11-AFC-04
PROOF OF SERVICE
(Revised 2/27/12)

APPLICANTS' AGENTS

BrightSource Energy, Inc.
Todd Stewart, Senior Director
Project Development
1999 Harrison Street, Suite 2150
Oakland, CA 94612
tstewart@brightsourceenergy.com

BrightSource Energy, Inc.
Michelle Farley
1999 Harrison Street, Suite 2150
Oakland, CA 94612
mfarley@brightsourceenergy.com

BrightSource Energy, Inc.
Brad DeJean
1999 Harrison Street, Suite 2150
Oakland, CA 94612
e-mail service preferred
bdejean@brightsourceenergy.com

APPLICANTS' CONSULTANTS

Grenier and Associates, Inc.
Andrea Grenier
1420 E. Roseville Parkway,
Suite 140-377
Roseville, CA 95661
e-mail service preferred
andrea@agrenier.com

URS Corporation
Angela Leiba
4225 Executive Square, Suite 1600
La Jolla, CA 92037
angela_leiba@urscorp.com

COUNSEL FOR APPLICANTS

Ellison, Schneider, & Harris
Christopher T. Ellison
Brian S. Biering
2600 Capitol Avenue, Suite 400
Sacramento, CA 95816-5905
cte@eslawfirm.com
bsb@eslawfirm.com

INTERESTED AGENCIES

Mojave Desert AQMD
Chris Anderson, Air Quality Engineer
14306 Park Avenue,
*Victorville, CA 92392-2310
canderson@mdaqmd.ca.gov

California ISO
e-mail service preferred
e-recipient@caiso.com

Bureau of Land Management
Cedric Perry
Lynnette Elser
22835 Calle San Juan De Los Lagos
Moreno Valley, CA 92553
cperry@blm.gov
lelser@blm.gov

INTERVENORS

Center for Biological Diversity
Lisa T. Belenky, Senior Attorney
351 California Street, Suite 600
San Francisco, CA 94104
e-mail service preferred
lbelenky@biologicaldiversity.org

Center for Biological Diversity
Ileene Anderson
Public Lands Desert Director
PMB 447, 8033 Sunset Boulevard
Los Angeles, CA 90046
e-mail service preferred
ianderson@biologicaldiversity.org

**ENERGY COMMISSION -
DECISIONMAKERS**

CARLA PETERMAN
Commissioner and Presiding Member
CPeterma@energy.state.ca.us

KAREN DOUGLAS
Commissioner and Associate Member
e-mail service preferred
kldouqla@energy.state.ca.us

**ENERGY COMMISSION -
DECISIONMAKERS (cont.)**

Kourtney Vaccaro
Hearing Adviser
e-mail service preferred
kvaccaro@energy.state.ca.us

Galen Lemei
Advisor to Commissioner Douglas
e-mail service preferred
glemei@energy.state.ca.us

Jennifer Nelson
Advisor to Commissioner Douglas
e-mail service preferred
jnelson@energy.state.ca.us

Jim Bartridge
Advisor to Commissioner Peterman
jbartrid@energy.state.ca.us

ENERGY COMMISSION STAFF

Pierre Martinez
Project Manager
pmartine@energy.state.ca.us

Lisa DeCarlo
Staff Counsel
e-mail service preferred
ldecarlo@energy.state.ca.us

Eileen Allen
Commissioners' Technical
Advisor for Facility Siting
e-mail service preferred
eallen@energy.state.ca.us

**ENERGY COMMISSION -
PUBLIC ADVISER**

Jennifer Jennings
Public Adviser's Office
e-mail service preferred
publicadviser@energy.state.ca.us

DECLARATION OF SERVICE

I, Cerné Jackson, declare that on March 1, 2012, I served and filed copies of the attached, dated March 1, 2012. This document is accompanied by the most recent Proof of Service list, located on the web page for this project at: [<http://www.energy.ca.gov/sitingcases/riomesa/index.html>].

The document has been sent to the other parties in this proceeding (as shown on the Proof of Service list) and to the Commission's Docket Unit or Chief Counsel, as appropriate, in the following manner: .

(Check all that Apply)

For service to all other parties:

- Served electronically to all e-mail addresses on the Proof of Service list;
- Served by delivering on this date, either personally, or for mailing with the U.S. Postal Service with first-class postage thereon fully prepaid, to the name and address of the person served, for mailing that same day in the ordinary course of business; that the envelope was sealed and placed for collection and mailing on that date to those addresses **NOT** marked "e-mail preferred."

AND

For filing with the Docket Unit at the Energy Commission:

- by sending electronic copies to the e-mail address below (preferred method); **OR**
- by depositing an original and 12 paper copies in the mail with the U.S. Postal Service with first class postage thereon fully prepaid, as follows:

CALIFORNIA ENERGY COMMISSION - DOCKET UNIT
Attn: Docket No. 11-AFC-4
1516 Ninth Street, MS-4
Sacramento, CA 95814-5512
docket@energy.state.ca.us

OR, if filing a Petition for Reconsideration of Decision or Order pursuant to Title 20, § 1720:

- Served by delivering on this date one electronic copy by e-mail, and an original paper copy to the Chief Counsel at the following address, either personally, or for mailing with the U.S. Postal Service with first class postage thereon fully prepaid:

California Energy Commission
Michael J. Levy, Chief Counsel
1516 Ninth Street MS-14
Sacramento, CA 95814
mlevy@energy.state.ca.us

I declare under penalty of perjury under the laws of the State of California that the foregoing is true and correct, that I am employed in the county where this mailing occurred, and that I am over the age of 18 years and not a party to the proceeding.

