



California Energy Commission

California Energy Demand (CED) 2011 Revised Forecast: LADWP Planning Area Electricity Forecasts

February 23, 2012

Nick Fugate
Demand Analysis Office
Electricity Supply Analysis Division

DOCKET 12-IEP-1B

DATE	<u>FEB 23 2012</u>
------	--------------------

RECD.	<u>FEB 23 2012</u>
-------	--------------------



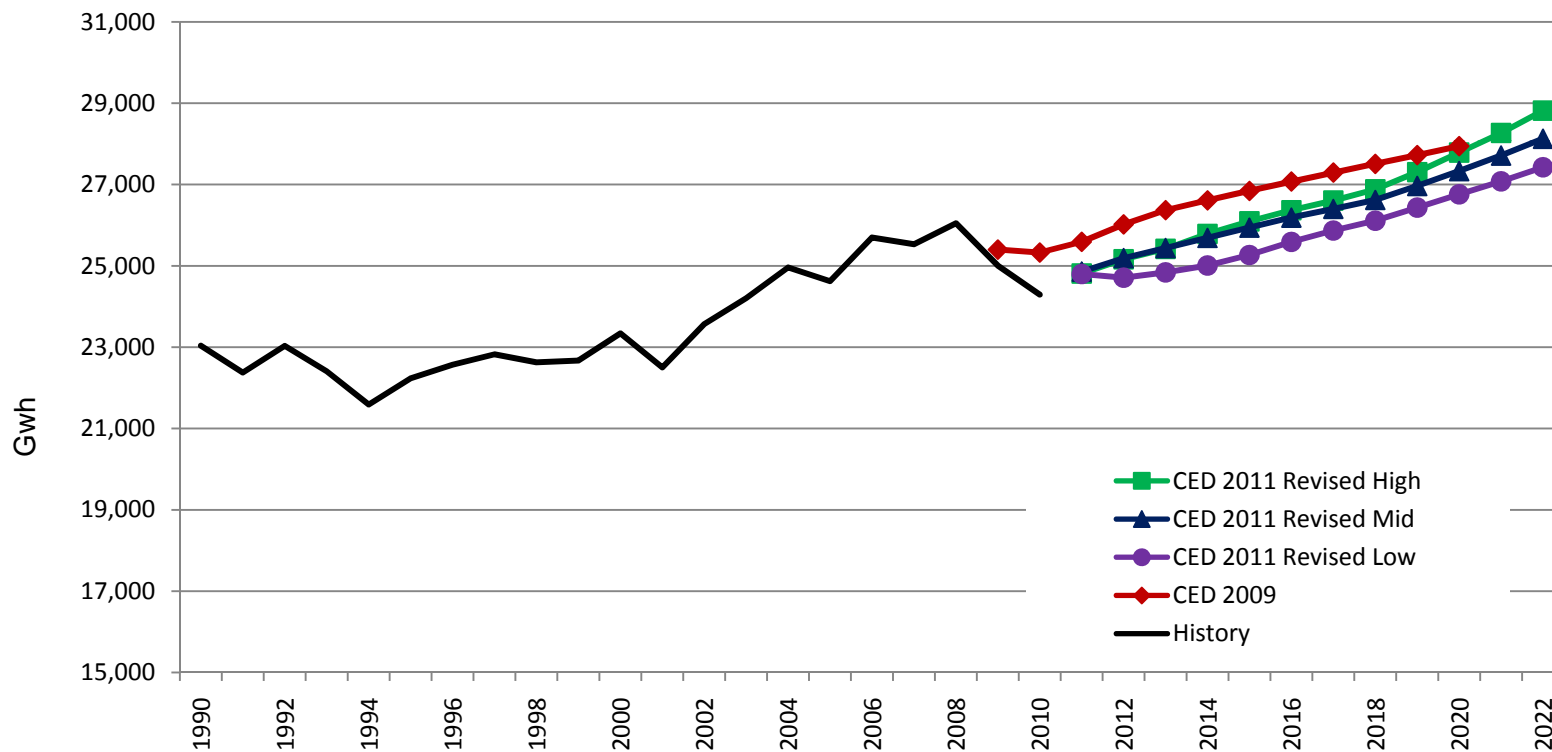
Summary

- Higher average growth in sales versus CED 2009 driven by higher population growth
- Average peak growth nearly double that of CED 2009
- Climate change considerations add 100-170 MW of peak demand by 2022
- PV adoption reduces peak by over 50 MW in 2022
- TV standards reduce sales by over 250 GWh in 2022
- EVs increase sales by roughly 250-500 GWh in 2022



LADWP Electricity Consumption

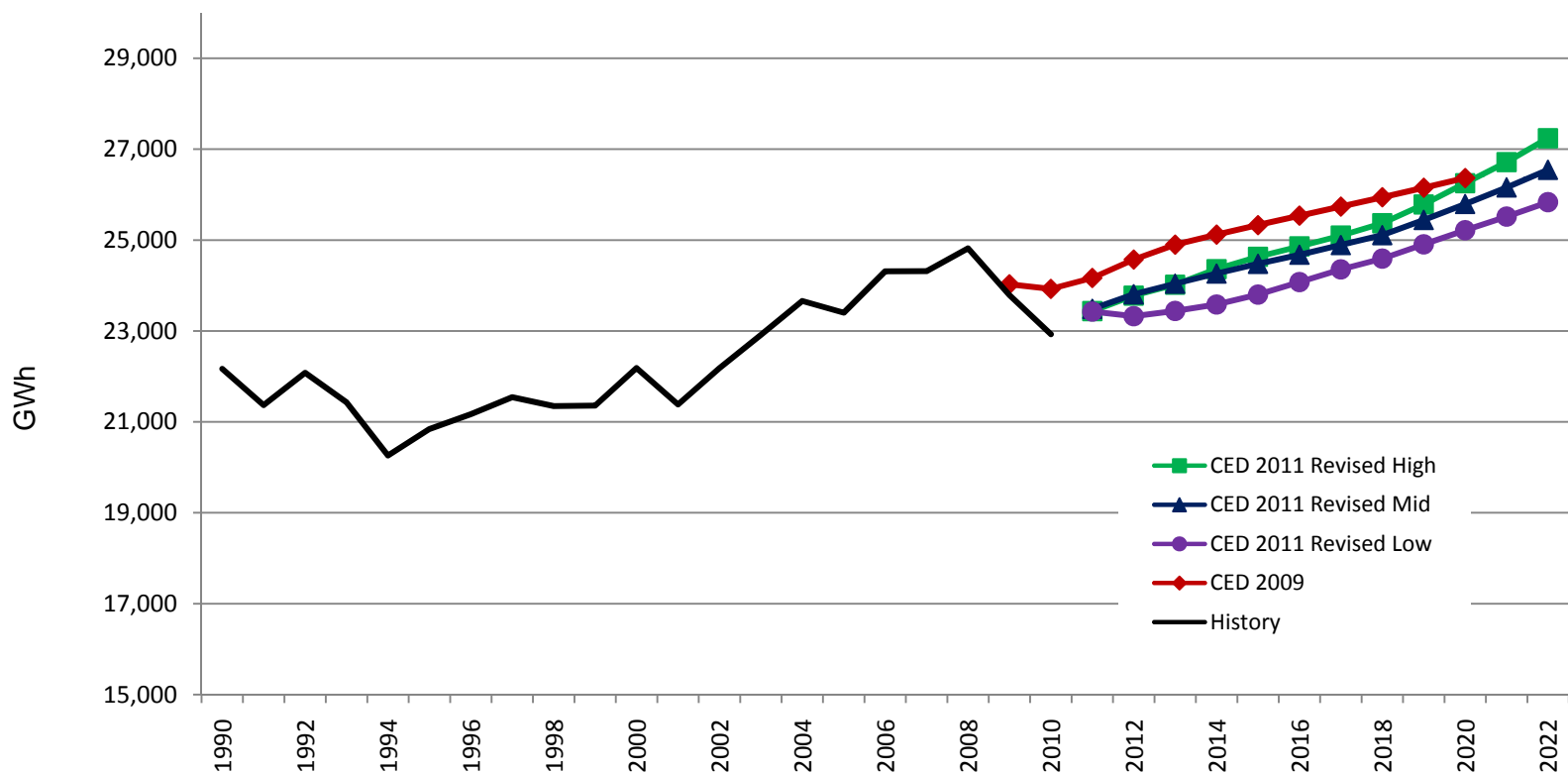
Average annual growth 2011-2022: 1.4% in high case, 0.9% in low case





LADWP Electricity Sales

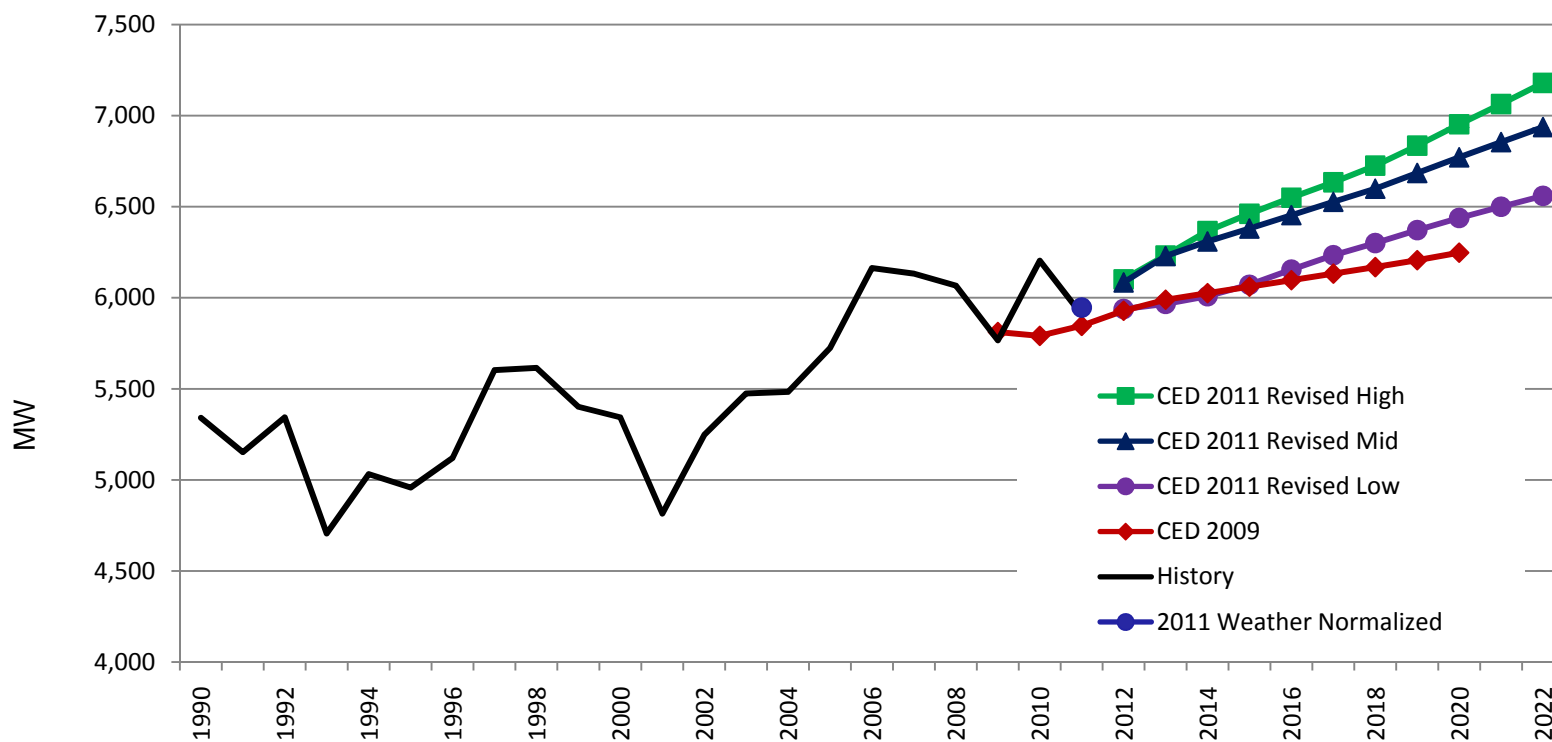
Growth similar to consumption forecast





LADWP Peak Demand

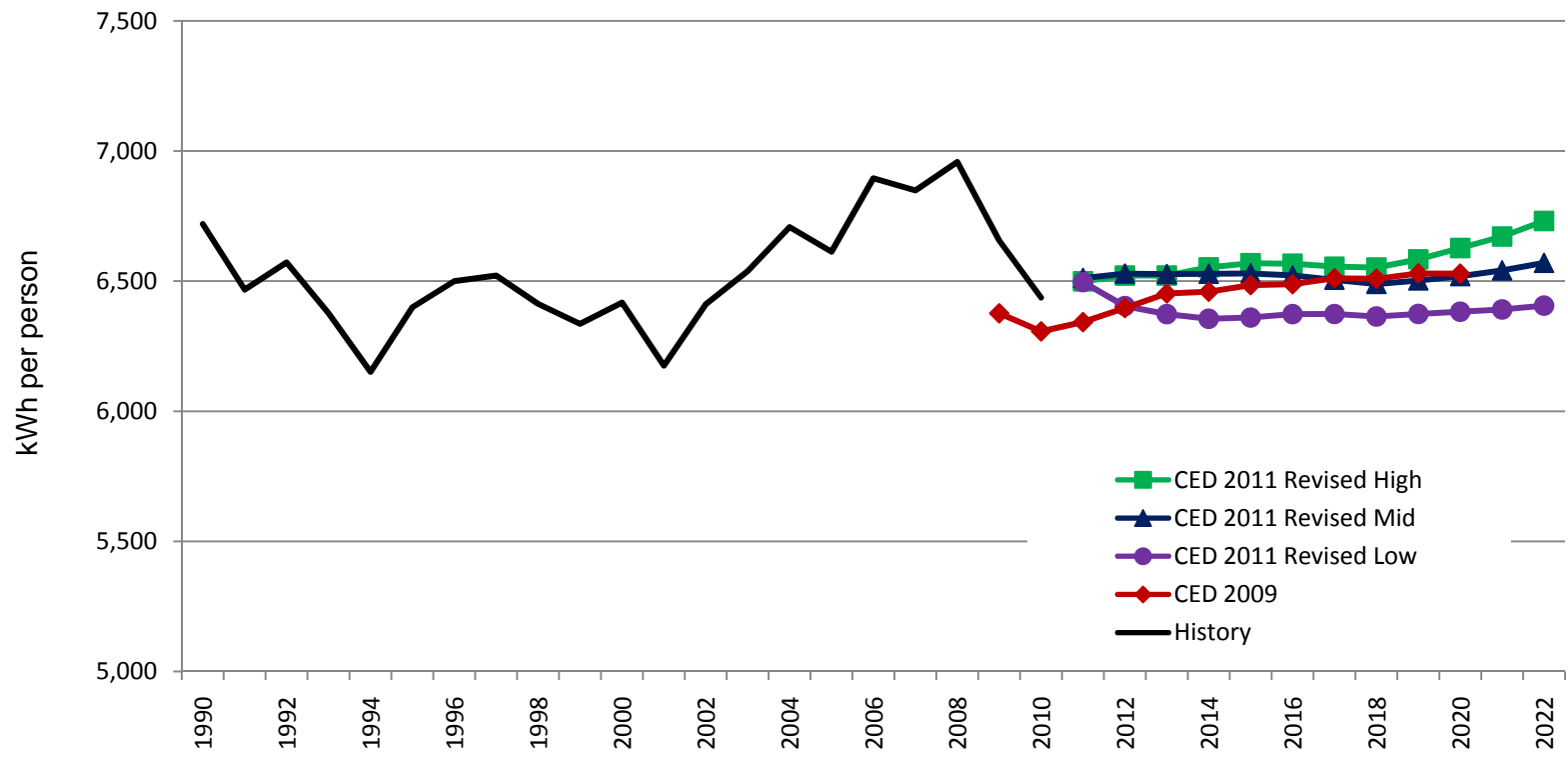
Average annual growth 2011-2022: 1.7% in high case, 0.9% in low case





LADWP Per Capita Consumption

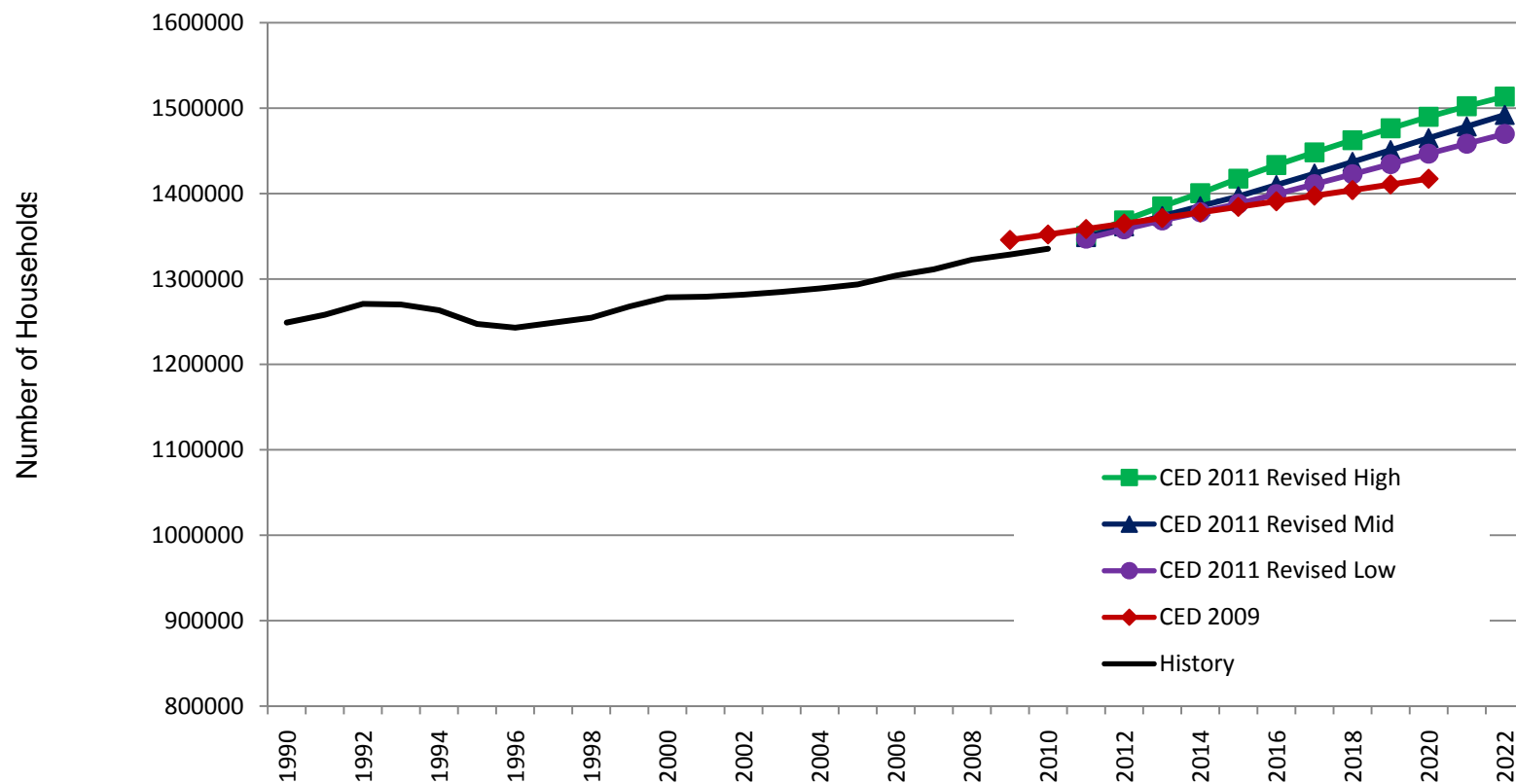
EVs push per capita consumption up slightly toward the end of the forecast period





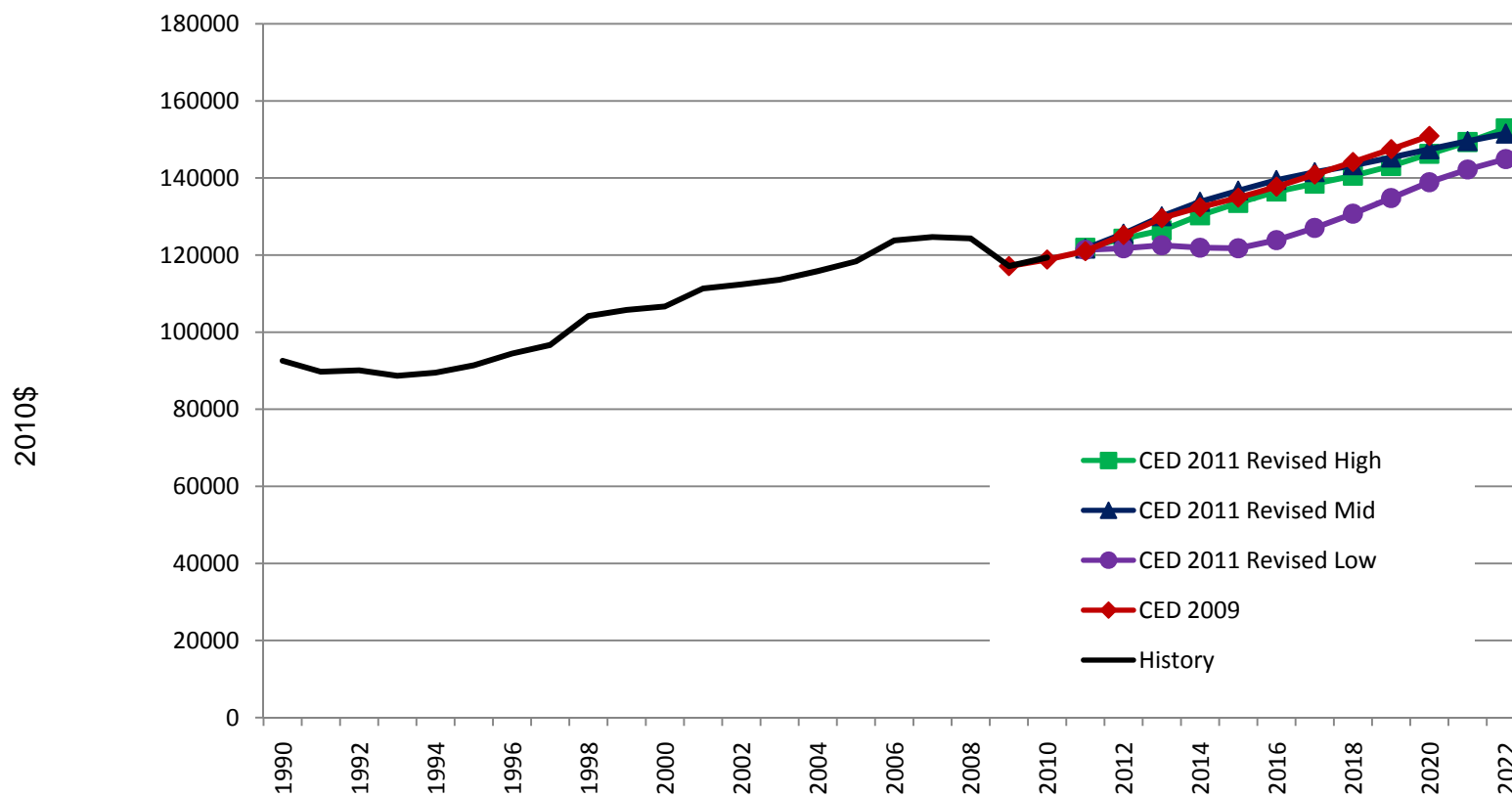
California Energy Commission

Key Input: Number of Households Faster growth over CED 2011





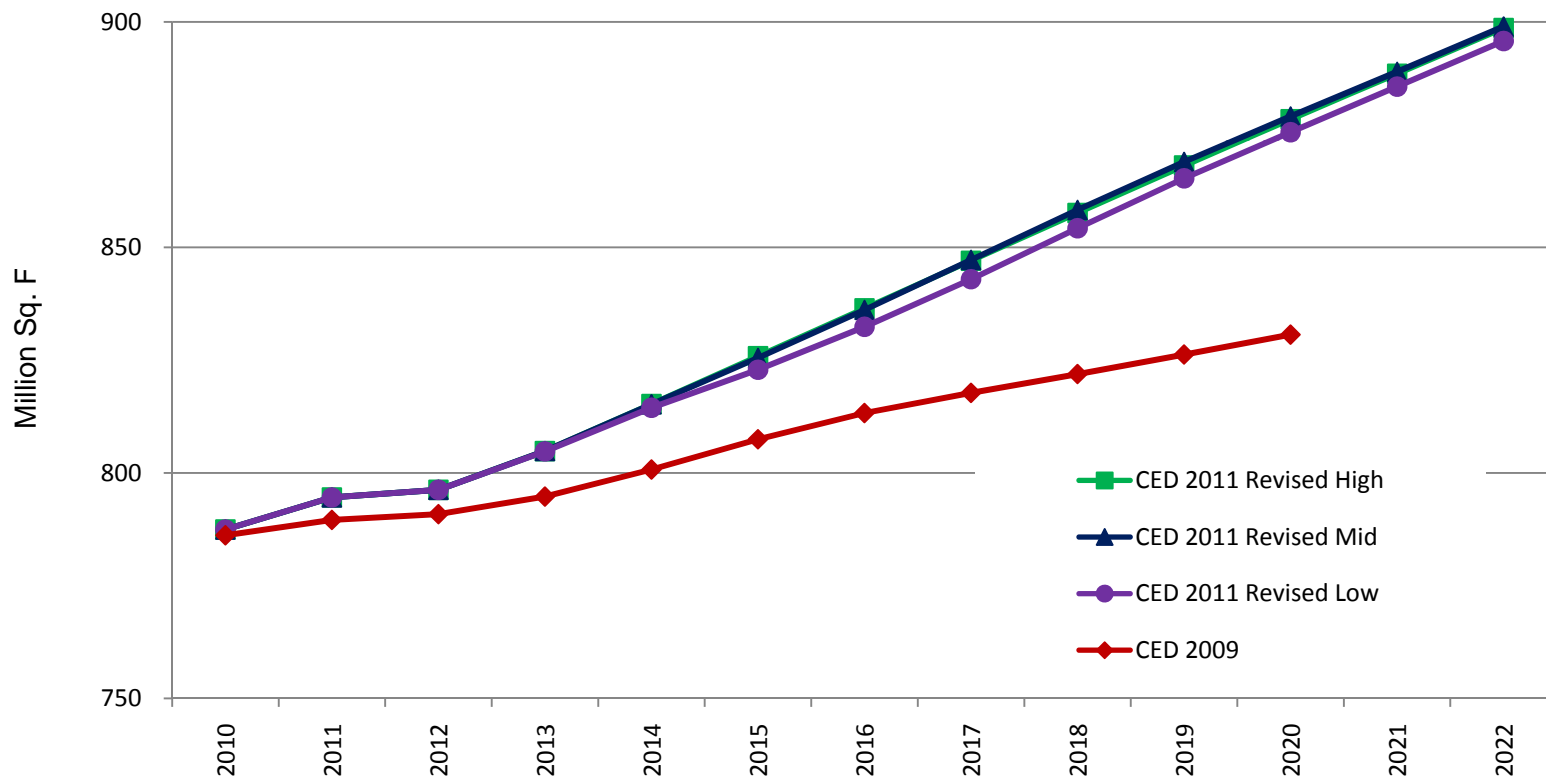
Key Input: Income per Household Mitigated by high growth in number of households





Key Input: Commercial Floorspace

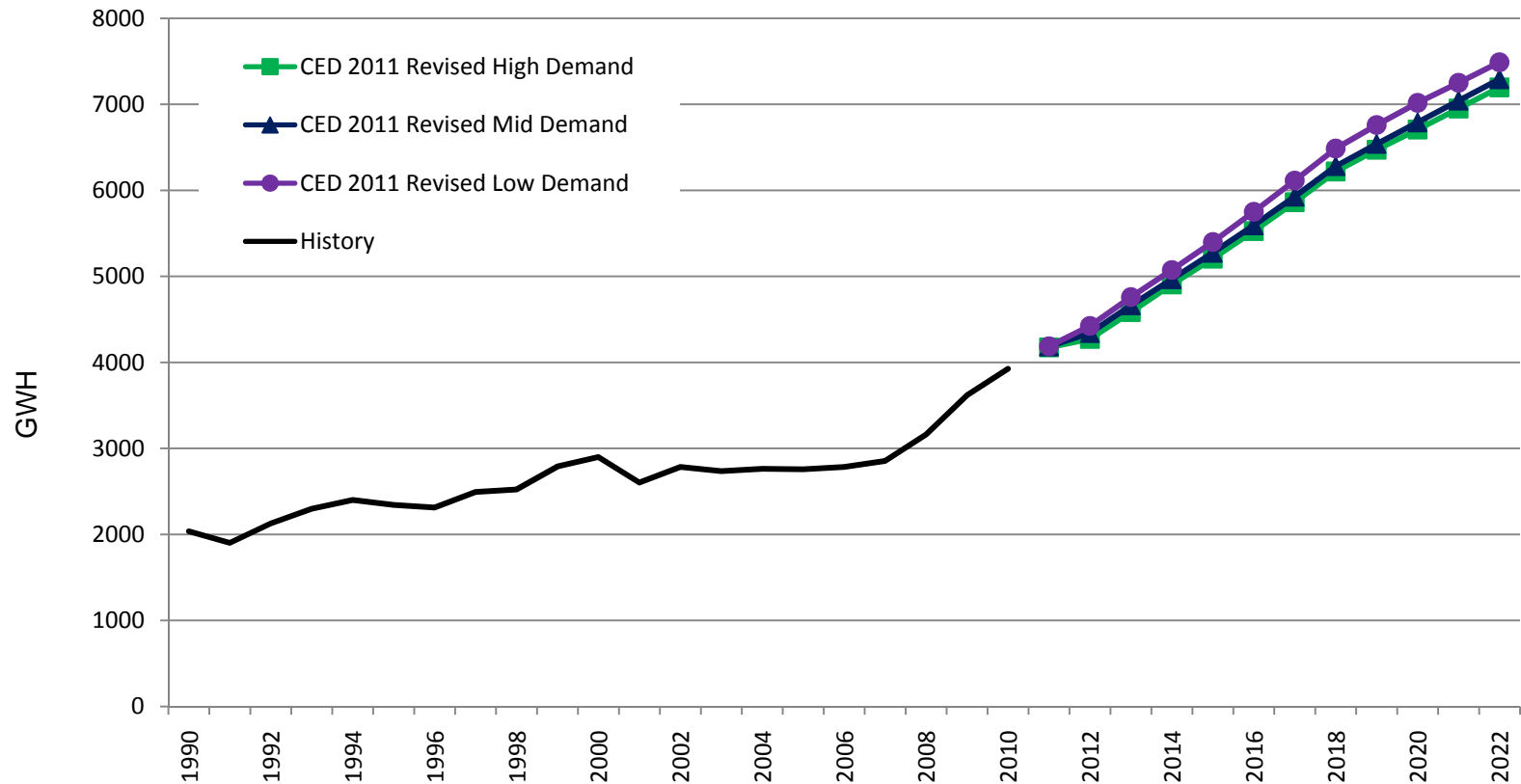
Rapid growth over CED 2009 reflects higher population growth





LADWP Efficiency Impacts

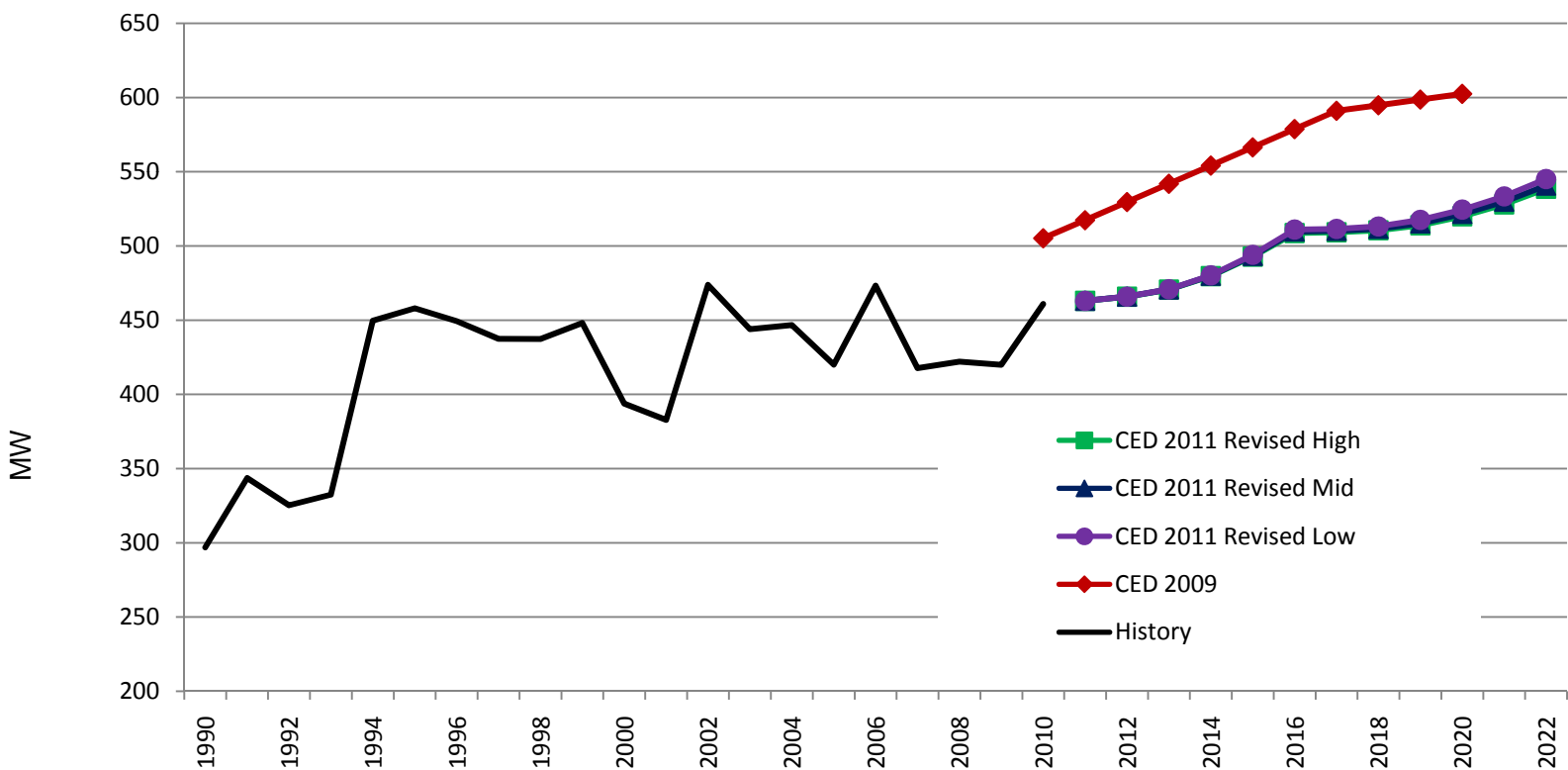
Over 3,300 additional GWh savings projected





LADWP Self-Generation Peak Impacts

PV Peak impacts increase by 80 MW in mid case





LADWP Electric Vehicles

Nearly 400 GWh of electricity consumption added in mid case

