



California Energy Commission

California Energy Demand (CED) 2011 Revised Forecast: SMUD Planning Area Electricity Forecasts

February 23, 2012

Nick Fugate
Demand Analysis Office
Electricity Supply Analysis Division

DOCKET

12-IEP-1B

DATE FEB 23 2012

RECD. FEB 23 2012



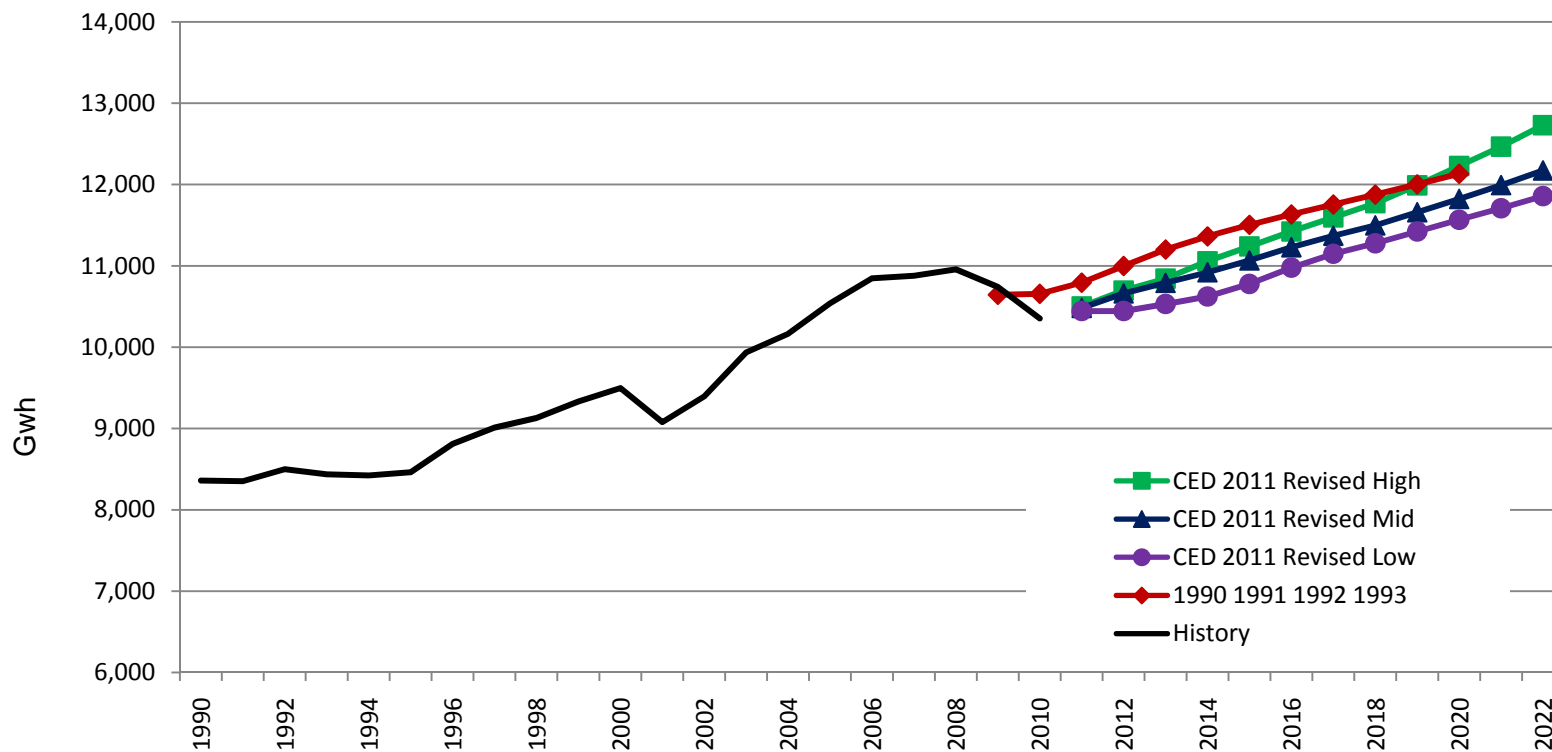
Summary

- Average growth in sales is similar to the 2009 IEPR forecast (CED 2009)
- Fastest growth occurs in the residential sector, contributing to higher peak growth
- Climate change considerations add 40-70 MW of peak demand by 2022
- PV adoption reduces peak by about 40 MW in 2022
- TV standards decrease sales by over 100 GWh in 2022
- EVs increase sales by roughly 100-200 GWh in 2022



SMUD Electricity Consumption

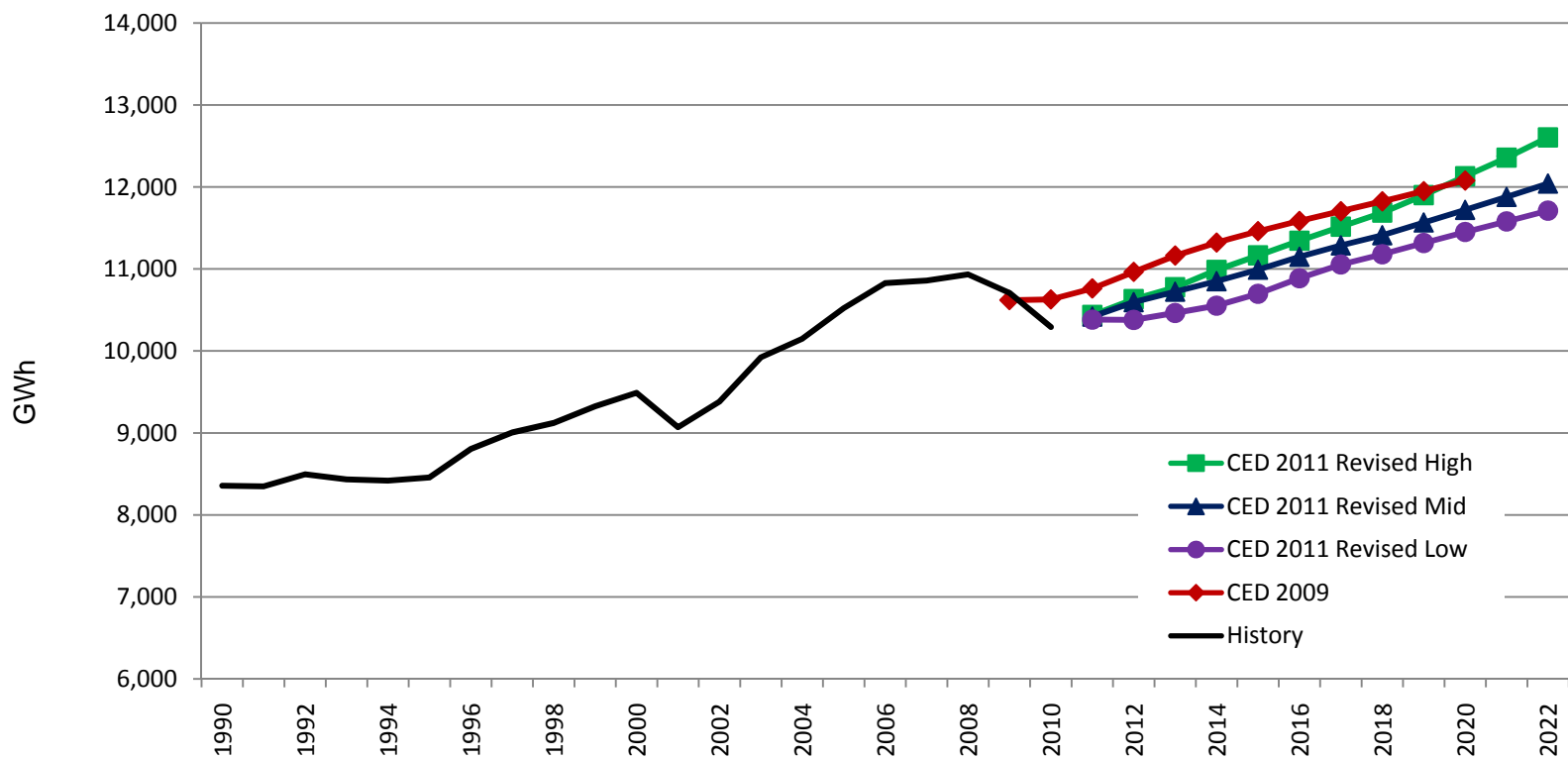
Average annual growth 2011-2022: 1.7% in high case, 1.1% in low case





SMUD Electricity Sales

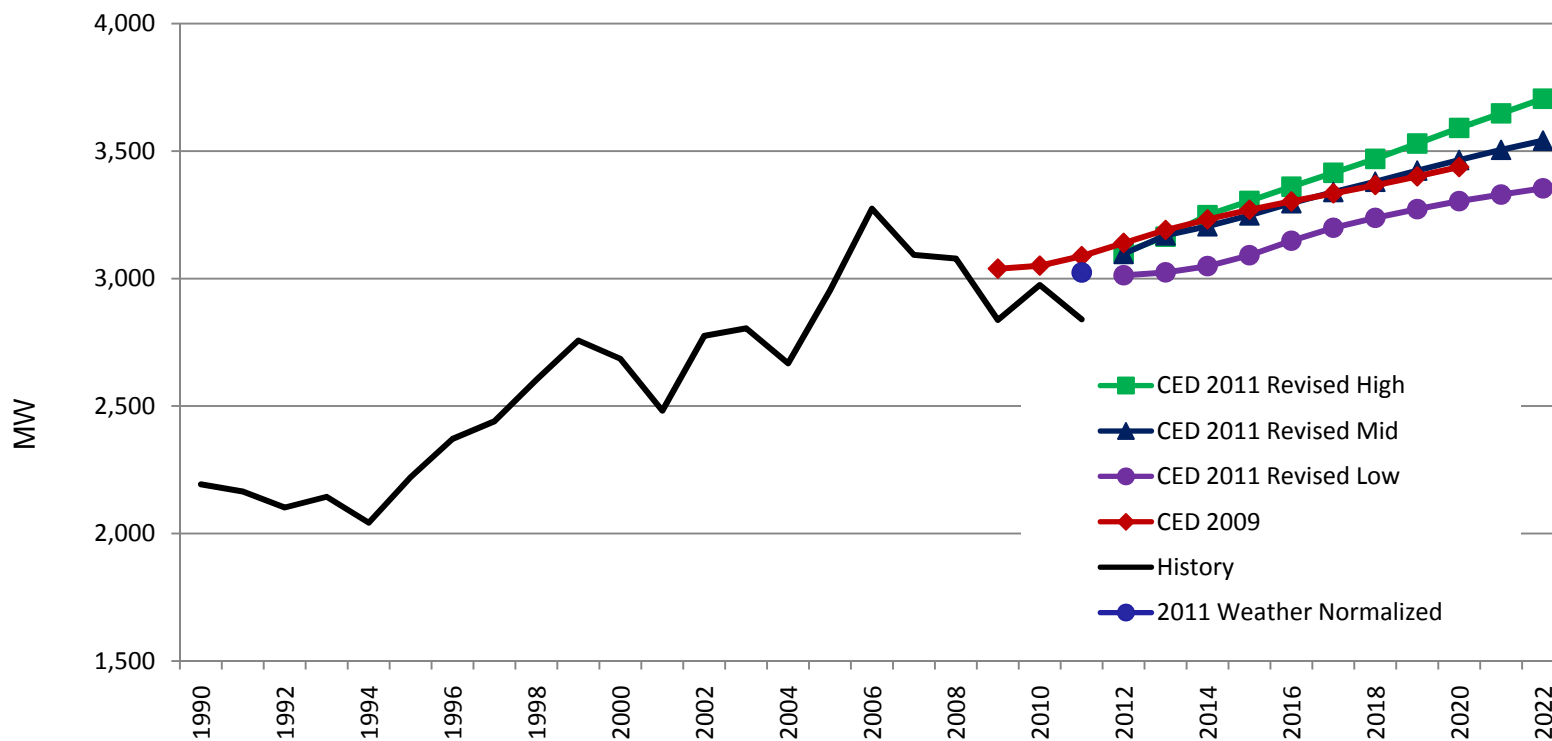
Growth similar to consumption forecast





SMUD Peak Demand

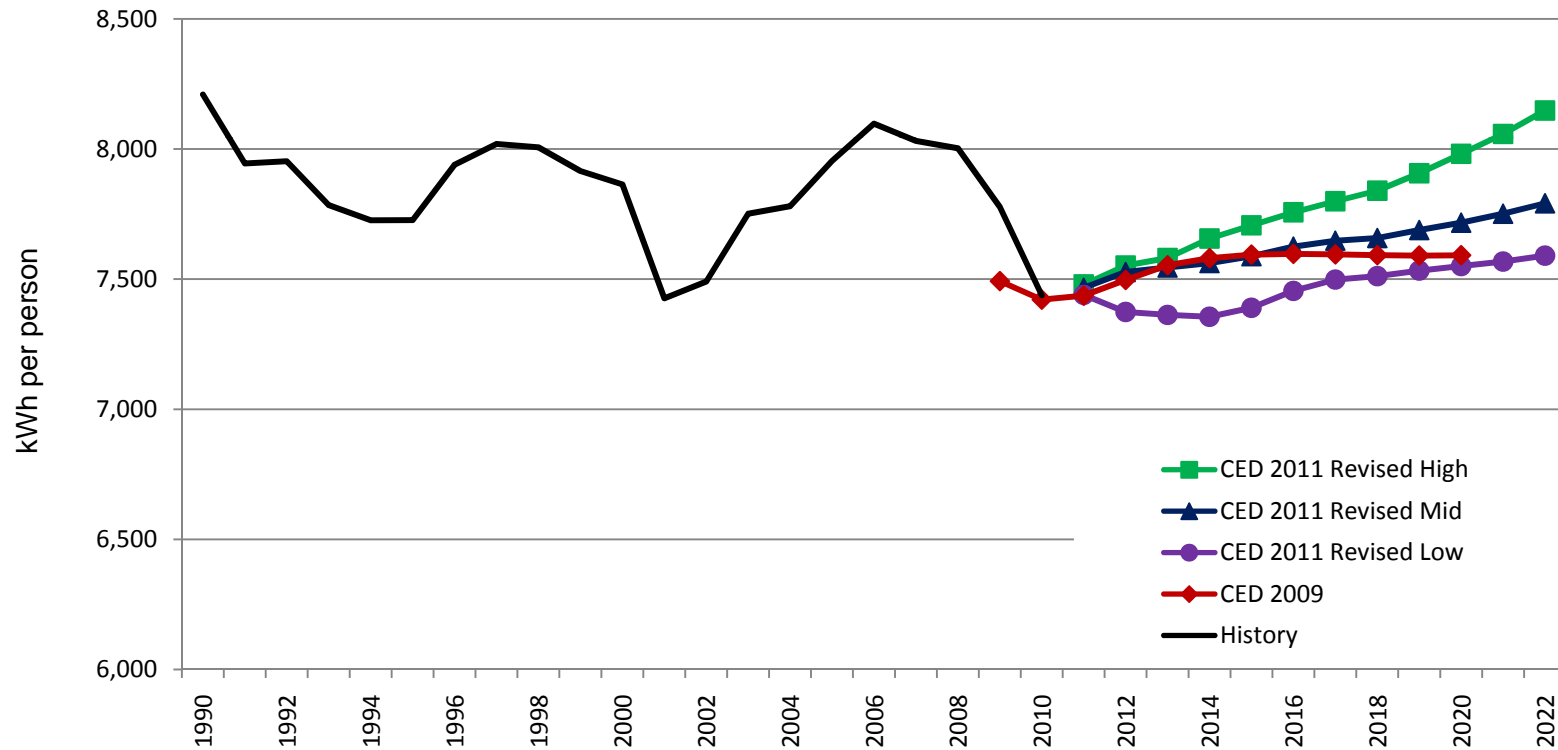
Average annual growth 2011-2022: 1.9% in high case, 1.0% in low case





SMUD Per Capita Consumption

EVs push per capita consumption up toward the end of the forecast period

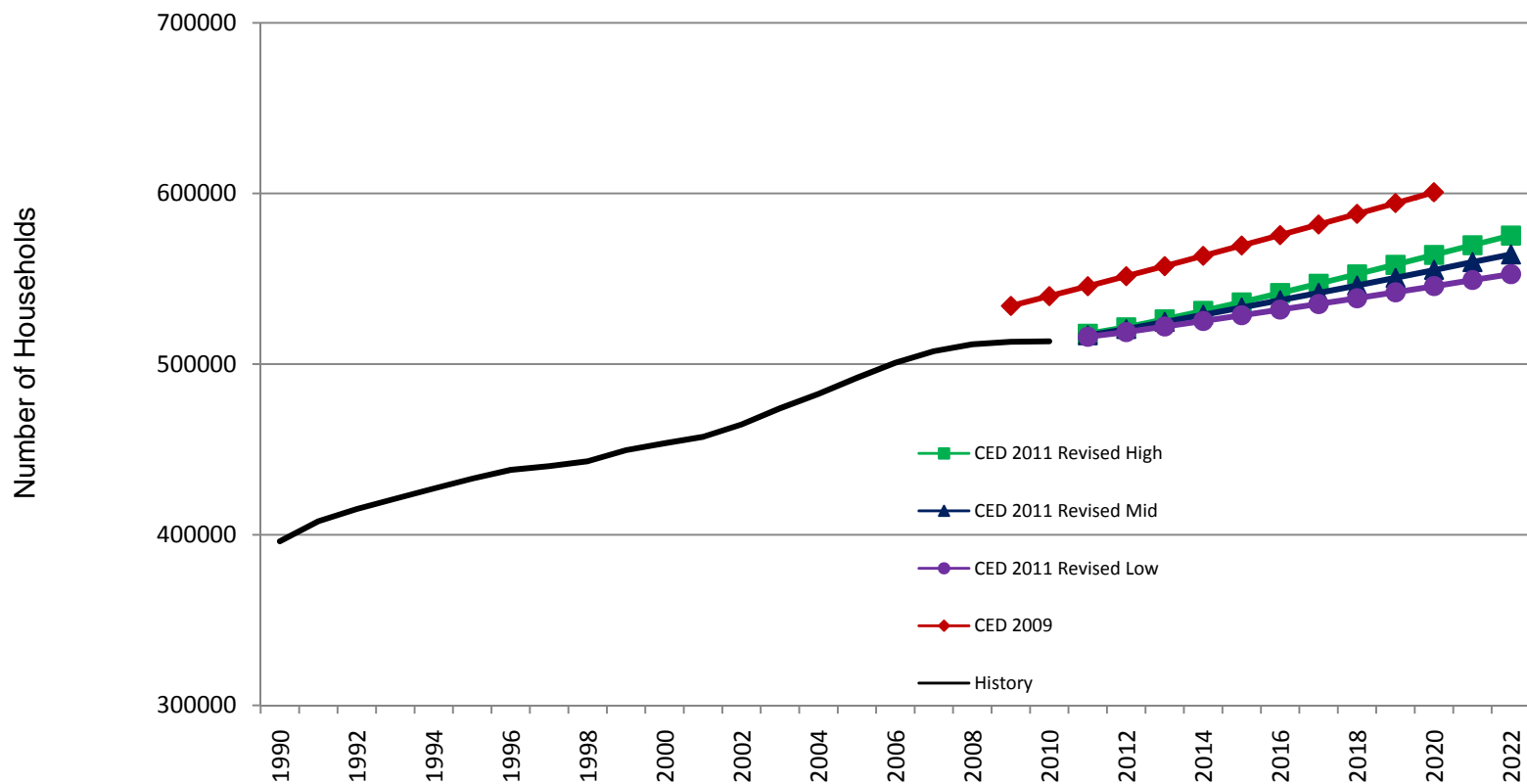




California Energy Commission

Key Input: Number of Households

Slower growth in mid and low cases

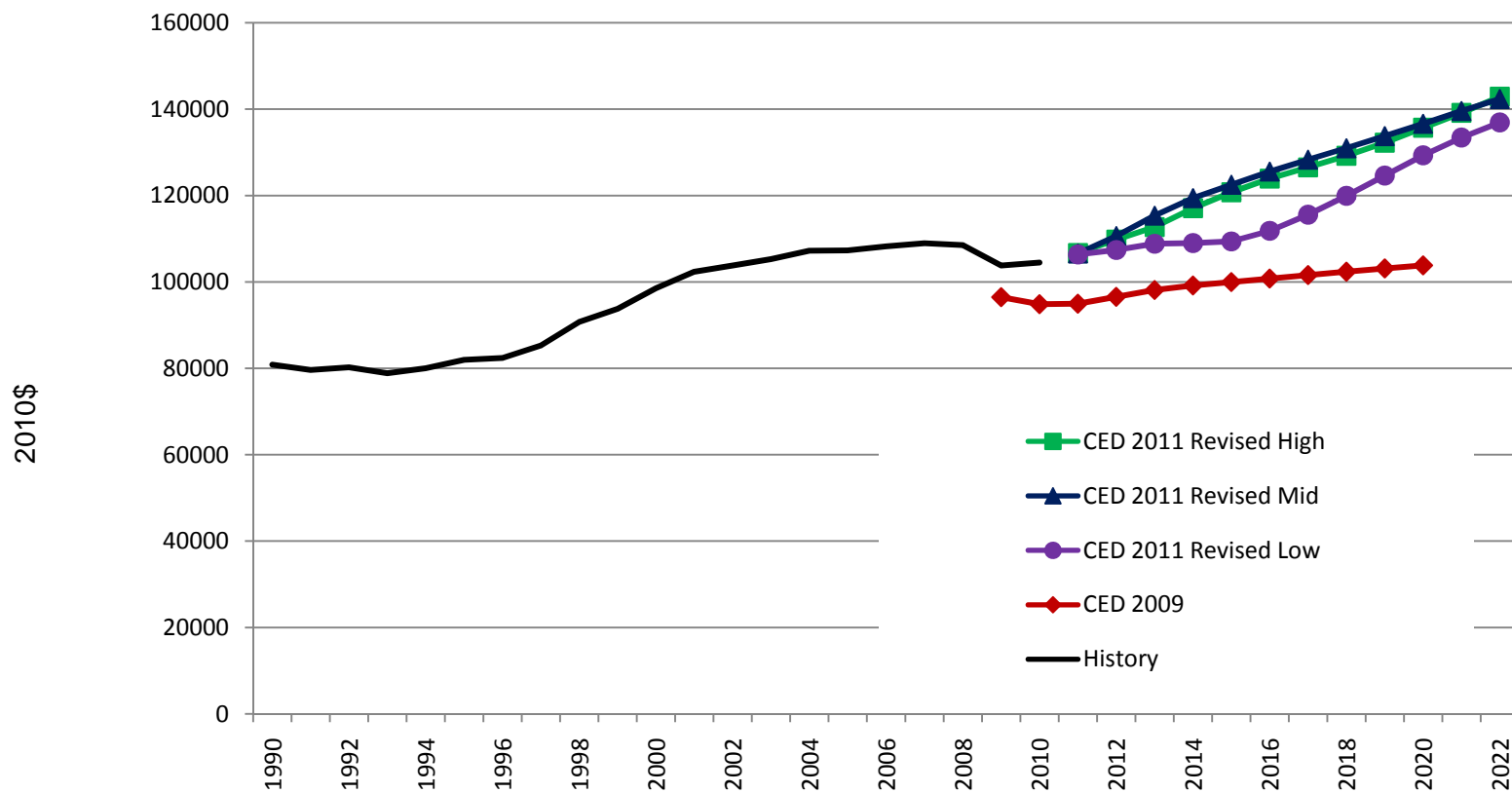




California Energy Commission

Key Input: Income per Household

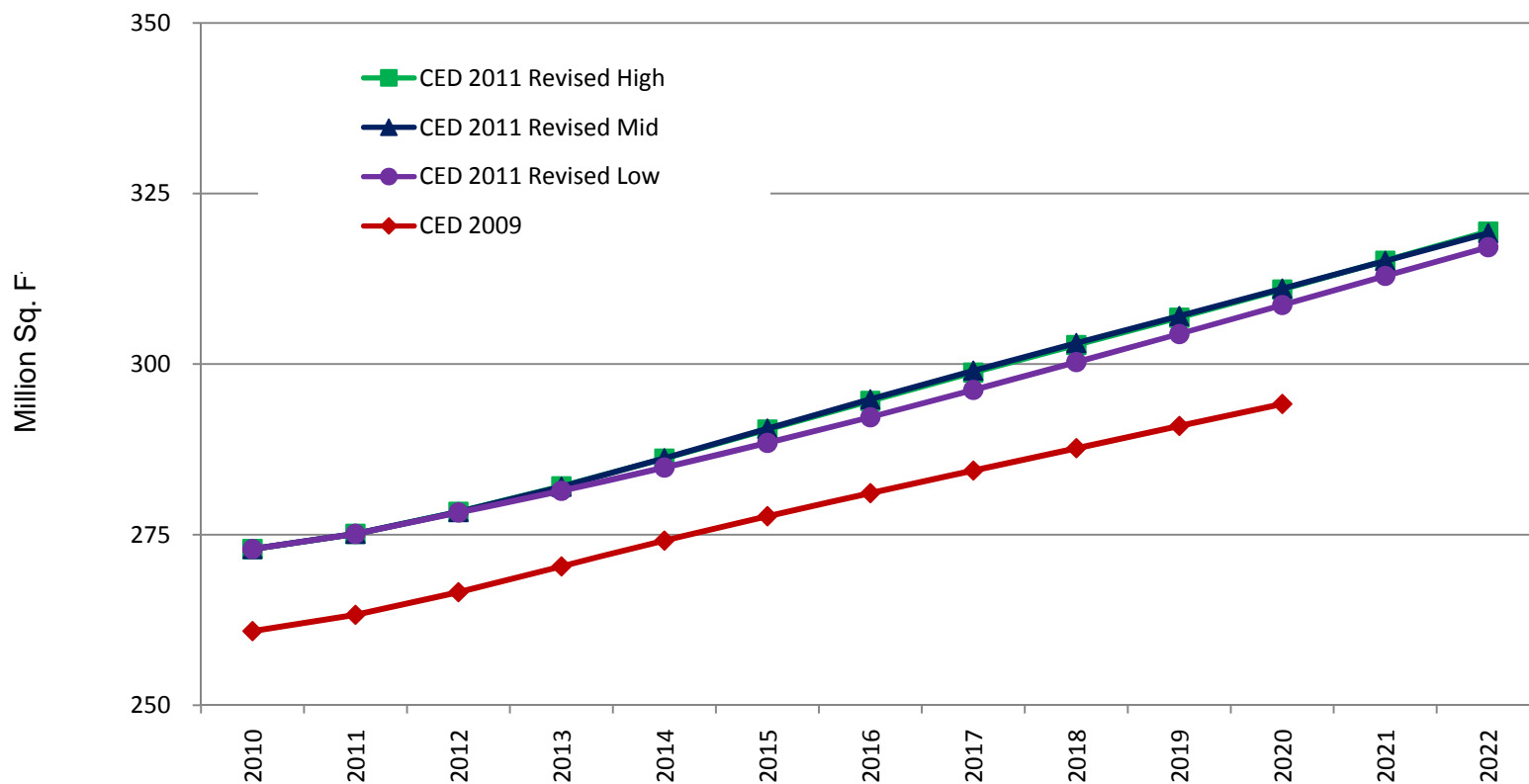
Rapid growth coming out of recession





Key Input: Commercial Floorspace

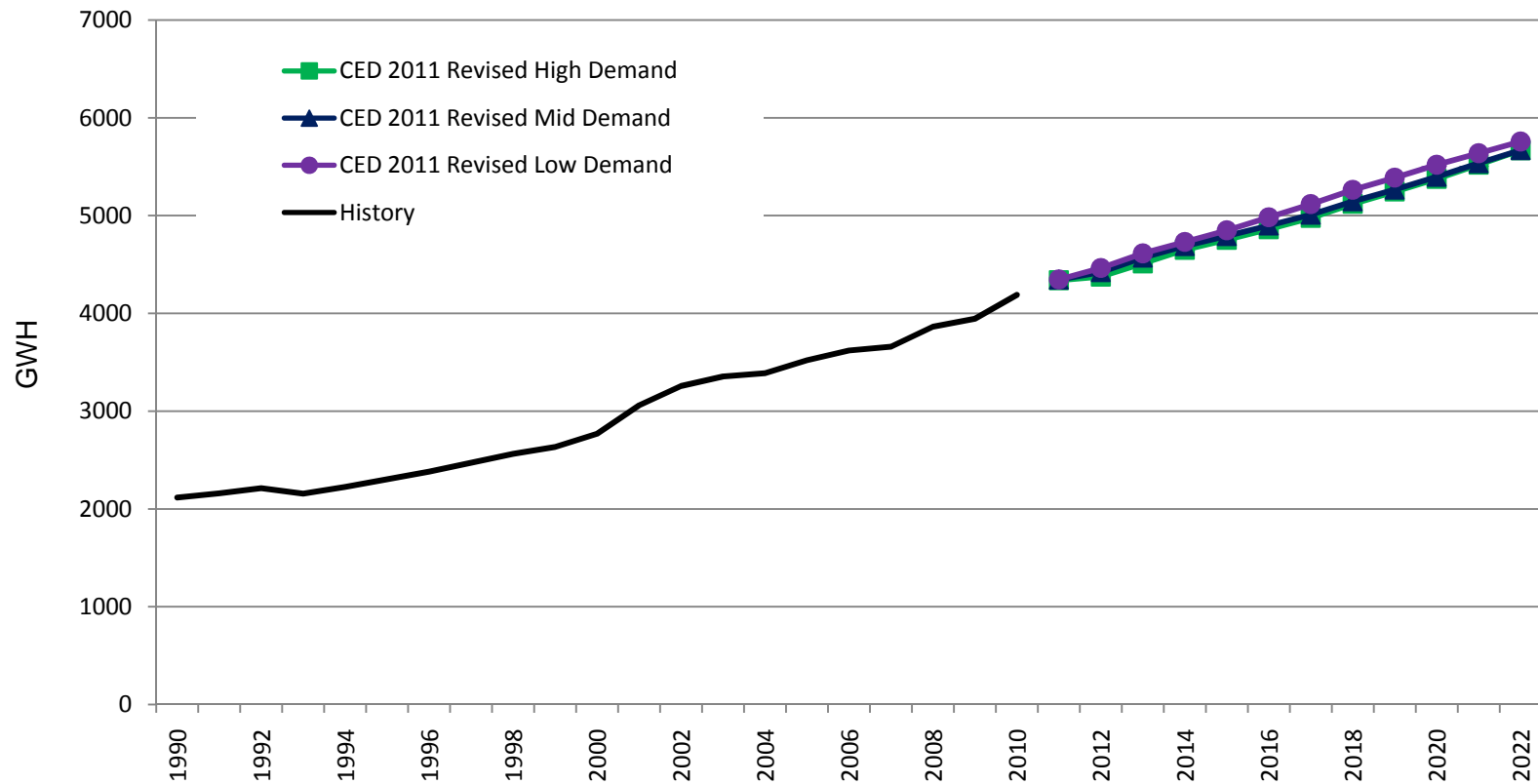
Average growth similar to CED 2009





SMUD Efficiency Impacts

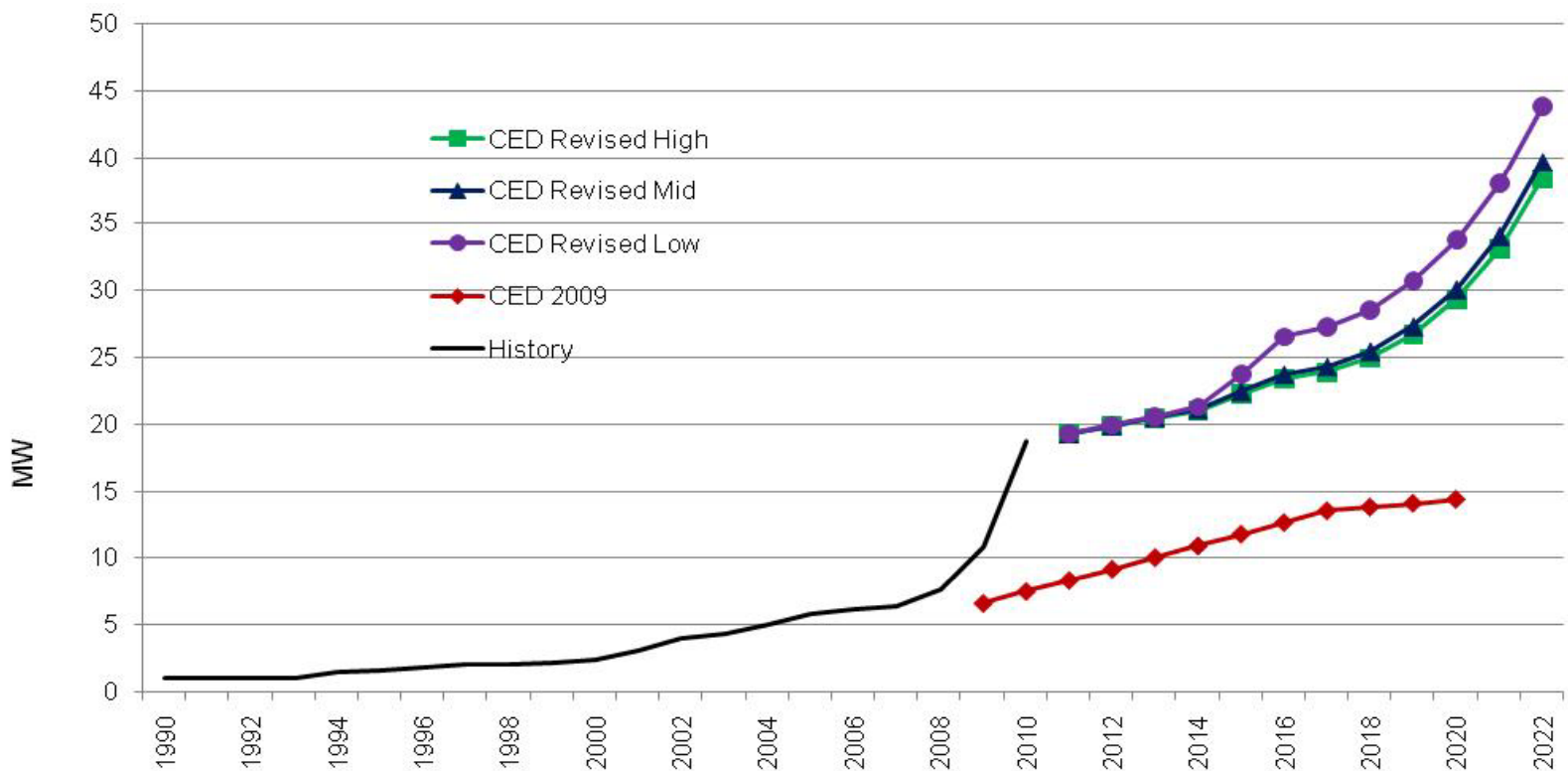
Nearly 1,500 additional GWh savings projected





SMUD Self-Generation Peak Impacts

PV Peak impacts increase by 20 MW in mid case





SMUD Electric Vehicles

Nearly 150 GWh of electricity consumption added in mid case

