

**CALIFORNIA ENERGY COMMISSION**1516 Ninth Street, MS-15  
Sacramento, California 95814Main website: [www.energy.ca.gov](http://www.energy.ca.gov)

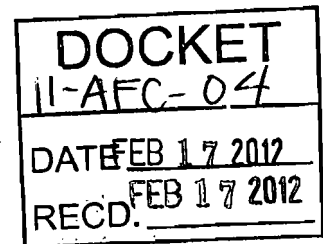
## Notice of Data Request and Issues Resolution Workshop for the Rio Mesa Solar Electric Generating Facility (11-AFC-4)

The California Energy Commission staff will conduct a Data Request and Issues Resolution Workshop for the proposed Rio Mesa Solar Electric Generating Facility (Rio Mesa SEGF). All interested agencies and members of the public are invited to participate.

The workshop will be held:

**THURSDAY, March 1, 2012**  
**Beginning at 9:00AM**

**California Energy Commission**  
**2<sup>nd</sup> Floor Conference Room Fishbowl**  
**1516 9<sup>th</sup> Street**  
**Sacramento, CA 95814-5512**  
**(wheelchair accessible, map attached)**



WebEx and Conference Call-in toll-free number: **1-866-469-3239**  
Access code: **495 663 959**  
Meeting Password: **meeting@9**

(please see attached instructions for WebEx and Conference Call access)

**PURPOSE**

The purpose of the workshop is to allow staff, the applicant, interested agencies, and the public the opportunity to discuss a number of topics covered in Data Request Set 1A, filed on February February 7, 2012 as well as Data Request Set 1B, to be filed prior to the workshop. The topic areas covered in the above referenced data request sets include Air Quality, Alternatives, Biological Resources, Cultural Resources, Land Use, Paleontological Resources, Socioeconomics, Traffic and Transportation, Transmission System Engineering, Visual Resources, Water Resources, Waste Management, and Worker Safety and Fire Protection. Other topic areas or issues related to staff review of the proposed project may also be discussed.

**BACKGROUND**

On October 14, 2011, BrightSource Energy, Inc., submitted an Application for Certification (AFC) to construct and operate the Rio Mesa Solar Electric Generating Facility (Rio Mesa SEGF). The Rio Mesa SEGF is proposed to be located on the Palo Verde Mesa in Riverside County, California, approximately 13 miles southwest of the City of Blythe. On December 14, 2011, the Energy Commission approved the Executive Director's recommendation that the AFC was deemed complete for purposes of commencing the Commission's siting review process. A portion of the proposed Rio Mesa SEGF is located on Federal land administered

by the Bureau of Land Management (BLM) and private lands. The Energy Commission and BLM are conducting a joint state and federal environmental review of the Rio Mesa SEGF. The Energy Commission staff and BLM staff have begun their discovery and analysis of the Rio Mesa SEGF project. The staff will use the information obtained from the workshop discussions to prepare its Preliminary Staff Assessment/Draft Environmental Impact Statement of the project.

## PROJECT DESCRIPTION

As proposed, Rio Mesa SEGF would comprise three solar fields and associated facilities encompassing a total of approximately 5,750 acres. If approved, each solar plant would generate 250 megawatts (MW), for a total net output of 750 MW and would use heliostats – elevated mirrors guided by a tracking system mounted on pylons – to focus the sun's rays on a receiver steam generator located atop a 750-foot tall solar power tower near the center of each solar field. Each solar plant would utilize approximately 85,000 heliostats.

## PARTICIPATION

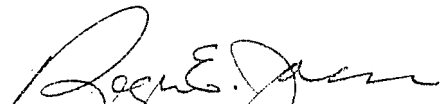
Please direct your technical or project schedule questions to Pierre Martinez, Energy Commission Project Manager, at (916) 651-3765, or by e-mail at [pmartine@energy.ca.gov](mailto:pmartine@energy.ca.gov). If you desire information on participating in the Energy Commission's review of the project, please contact the Energy Commission's Public Adviser's Office, at (916) 654-4489 or toll free in California, at (800) 822-6228. The Public Adviser's Office can also be contacted via email at [pao@energy.ca.gov](mailto:pao@energy.ca.gov). If you have a disability and require assistance to participate, please contact Lou Quiroz at (916) 654-5146 or via email at [lquiroz@energy.ca.gov](mailto:lquiroz@energy.ca.gov) at least five days in advance.

News media inquiries should be directed to the media office at (916) 654-4989 or via email at [mediaoffice@energy.ca.gov](mailto:mediaoffice@energy.ca.gov). The staff's Data Requests, status of the proposed project, copies of notices, an electronic version of the AFC, and other relevant documents are also available on the project web site: <http://www.energy.ca.gov/sitingcases/riomesa/index.html>. If you are unable to attend the workshop, written comments may be sent to the staff's project manager electronically or at the Energy Commission's street address shown on the letterhead of this Notice.

You can also subscribe to receive e-mail notification of all notices and announcements from the project website through the List Server. By being on this email list, you will receive all project-related notices and documents pertaining to the project's evaluation and review.

Date:

2/17/12

  
\_\_\_\_\_  
ROGER E. JOHNSON, Deputy Director  
Siting, Transmission & Environmental  
Protection Division

cc: Docket (11-AFC-4)  
Proof of Service List  
Property Owner List No. 7412  
Agency List No. 7413  
Library List No. 7414

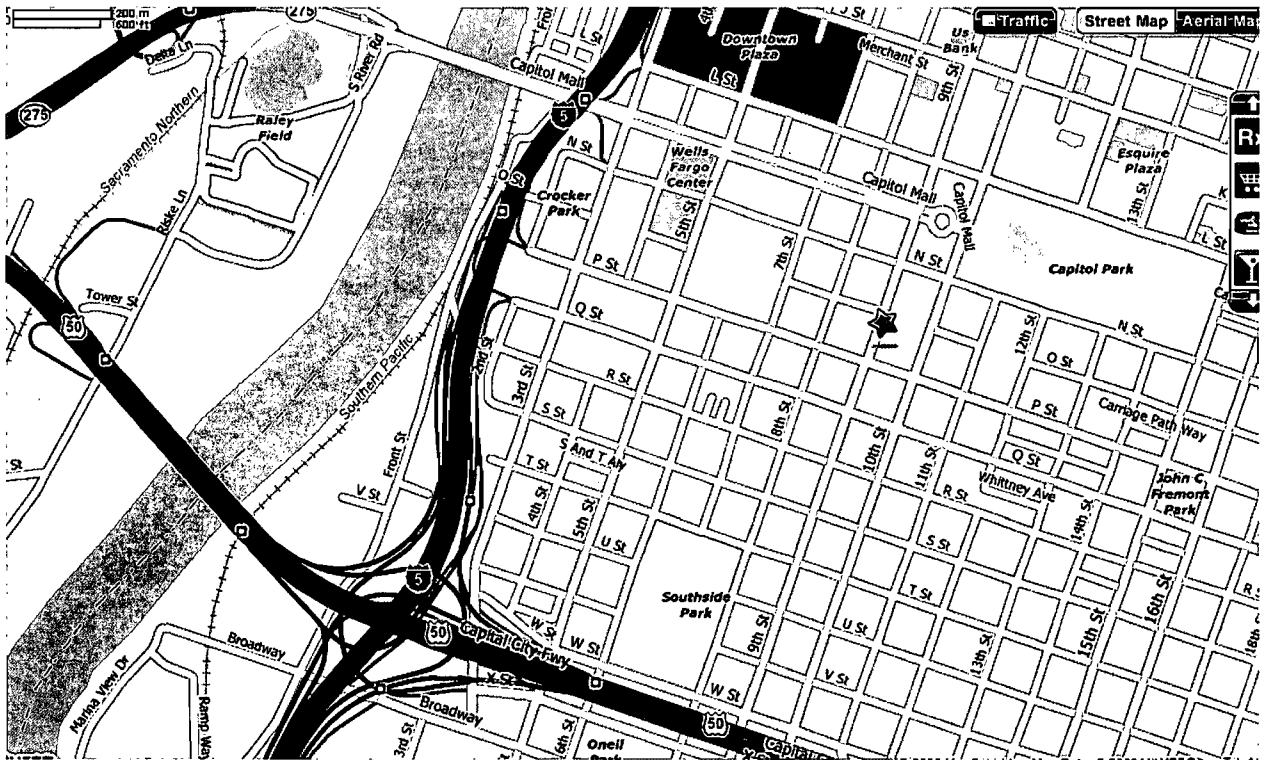
**ENERGY COMMISSION STAFF  
DATA REQUEST AND ISSUES RESOLUTION WORKSHOP  
RIO MESA SOLAR ELECTRIC GENERATING FACILITY  
(11-AFC-4)**

**THURSDAY, March 1, 2012  
Beginning at 9:00AM**

**California Energy Commission  
2<sup>nd</sup> Floor Conference Room Fishbowl  
1516 9<sup>th</sup> Street  
Sacramento, CA 95814-5512  
(wheelchair accessible, map attached)**

**WebEx Call-in toll-free number: 1-866-469-3239  
Access code: 495 663 959  
Meeting Password: meeting@9**

**(please see attached instructions for WebEx)**



**PARTICIPATION IN THE**  
**March 1, 2012**  
**ENERGY COMMISSION DATA REQUEST AND ISSUES RESOLUTION WORKSHOP**  
**RIO MESA SOLAR ELECTRIC GENERATING FACILITY**  
**(11-AFC-4)**  
**THROUGH WEBEX**

**1. COMPUTER LOG-ON WITH A DIRECT PHONE NUMBER:**

- Please go to <https://energy.webex.com> and enter **495 663 959**
- When prompted, enter your information and **meeting@9**

After you login, a prompt will appear on-screen for you to provide **your** phone number. In the **Number box**, type your area code and phone number and click **OK**.

**You will receive a call back on your phone for the audio portion of the meeting.**

**2. COMPUTER LOG-ON FOR CALLERS WITH AN EXTENSION PHONE NUMBER, ETC:**

- Please go to <https://energy.webex.com> and enter **495 663 959** and **meeting@9**
- After you login, a prompt will ask for your phone number. Click **"CANCEL."**
- Instead call **1-866-469-3239**. When prompted, enter **495 663 959** and your unique Attendee ID number which is listed in the top left area of your computer screen after you login.

**3. TELEPHONE ONLY (NO COMPUTER ACCESS):**

- Call **1-866-469-3239** and when prompted enter **495 663 959**

If you have difficulty joining the meeting, please call the WebEx Technical Support number at **1-866-229-3239**. To see if your computer is compatible, visit [<http://support.webex.com/support/systemrequirements.html>]. Please be aware that the meeting's WebEx audio and on-screen activity may be recorded.

WebEx Call-in toll-free number: **1-866-469-3239**  
WebEx Access code: **495 663 959**  
WebEx Meeting Password: **meeting@9**

**DECLARATION OF SERVICE**

I, Cenne Jackson, declare that on February 17, 2012, I served and filed copies of the attached Public Notice of Staff Workshop, dated February 17, 2012. This document is accompanied by the most recent Proof of Service list, located on the web page for this project at: [[www.energy.ca.gov/sitingcases/riomesa/index.html](http://www.energy.ca.gov/sitingcases/riomesa/index.html)].

The document has been sent to the other parties in this proceeding (as shown on the Proof of Service list) and to the Commission's Docket Unit or Chief Counsel, as appropriate, in the following manner:

**(Check all that Apply)**

**For service to all other parties:**

- Served electronically to all e-mail addresses on the Proof of Service list;
- Served by delivering on this date, either personally, or for mailing with the U.S. Postal Service with first-class postage thereon fully prepaid, to the name and address of the person served, for mailing that same day in the ordinary course of business; that the envelope was sealed and placed for collection and mailing on that date to those addresses **NOT** marked "e-mail preferred."

**AND**

**For filing with the Docket Unit at the Energy Commission:**

- by sending electronic copies to the e-mail address below (preferred method); **OR**
- by depositing an original and 12 paper copies in the mail with the U.S. Postal Service with first class postage thereon fully prepaid, as follows:

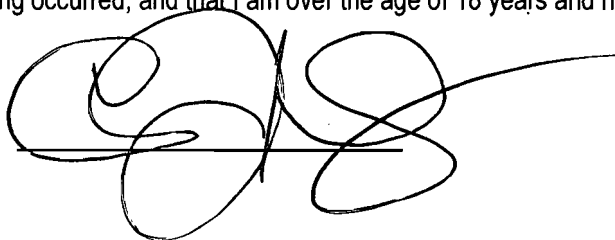
**CALIFORNIA ENERGY COMMISSION – DOCKET UNIT**  
Attn: Docket No. 11-AFC-4  
1516 Ninth Street, MS-4  
Sacramento, CA 95814-5512  
[docket@energy.state.ca.us](mailto:docket@energy.state.ca.us)

**OR, if filing a Petition for Reconsideration of Decision or Order pursuant to Title 20, § 1720:**

- Served by delivering on this date one electronic copy by e-mail, and an original paper copy to the Chief Counsel at the following address, either personally, or for mailing with the U.S. Postal Service with first class postage thereon fully prepaid:

California Energy Commission  
Michael J. Levy, Chief Counsel  
1516 Ninth Street MS-14  
Sacramento, CA 95814  
[mlevy@energy.state.ca.us](mailto:mlevy@energy.state.ca.us)

I declare under penalty of perjury under the laws of the State of California that the foregoing is true and correct, that I am employed in the county where this mailing occurred, and that I am over the age of 18 years and not a party to the proceeding.





BEFORE THE ENERGY RESOURCES CONSERVATION AND DEVELOPMENT  
COMMISSION OF THE STATE OF CALIFORNIA  
1516 NINTH STREET, SACRAMENTO, CA 95814  
1-800-822-6228 – WWW.ENERGY.CA.GOV

APPLICATION FOR CERTIFICATION  
FOR THE *RIO MESA SOLAR*  
*ELECTRIC GENERATING FACILITY*

DOCKET NO. 11-AFC-04  
PROOF OF SERVICE  
(Revised 2/10/12)

**APPLICANTS' AGENTS**

BrightSource Energy, Inc.  
Todd Stewart, Senior Director  
Project Development  
1999 Harrison Street, Suite 2150  
Oakland, CA 94612  
[tstewart@brightsourceenergy.com](mailto:tstewart@brightsourceenergy.com)

BrightSource Energy, Inc.  
Michelle Farley  
1999 Harrison Street, Suite 2150  
Oakland, CA 94612  
**\*mfarley@brightsourceenergy.com**

BrightSource Energy, Inc.  
Brad DeJean  
1999 Harrison Street, Suite 2150  
Oakland, CA 94612  
*e-mail service preferred*  
[bdejean@brightsourceenergy.com](mailto:bdejean@brightsourceenergy.com)

**APPLICANTS' CONSULTANTS**

Grenier and Associates, Inc.  
Andrea Grenier  
1420 E. Roseville Parkway,  
Suite 140-377  
Roseville, CA 95661  
[andrea@agrenier.com](mailto:andrea@agrenier.com)

URS Corporation  
Angela Leiba  
4225 Executive Square, Suite 1600  
La Jolla, CA 92037  
[Angela\\_leiba@urscorp.com](mailto:Angela_leiba@urscorp.com)

**COUNSEL FOR APPLICANTS**

Ellison, Schneider, & Harris  
Christopher T. Ellison  
Brian S. Biering  
2600 Capitol Avenue, Suite 400  
Sacramento, CA 95816-5905  
[cte@eslawfirm.com](mailto:cte@eslawfirm.com)  
[bsb@eslawfirm.com](mailto:bsb@eslawfirm.com)

**INTERESTED AGENCIES**

Mojave Desert Air Quality Management  
District  
Chris Anderson, Air Quality Engineer  
14306 Park Avenue, CA 92392  
[canderson@mdaqmd.ca.gov](mailto:canderson@mdaqmd.ca.gov)

California ISO  
*e-mail service preferred*  
[e-recipient@caiso.com](mailto:e-recipient@caiso.com)

Bureau of Land Management  
Cedric Perry  
Lynnette Elser  
22835 Calle San Juan De Los Lagos  
Moreno Valley, CA 92553  
[cperry@blm.gov](mailto:cperry@blm.gov)  
[lenser@blm.gov](mailto:lenser@blm.gov)

**INTERVENORS**

Center for Biological Diversity  
Lisa T. Belenky, Senior Attorney  
351 California Street, Suite 600  
San Francisco, CA 94104  
*e-mail service preferred*  
[lbelenky@biologicaldiversity.org](mailto:lbelenky@biologicaldiversity.org)

Center for Biological Diversity  
Ileene Anderson  
Public Lands Desert Director  
PMB 447, 8033 Sunset Boulevard  
Los Angeles, CA 90046  
*e-mail service preferred*  
[ianderson@biologicaldiversity.org](mailto:ianderson@biologicaldiversity.org)

**ENERGY COMMISSION –  
DECISIONMAKERS**

CARLA PETERMAN  
Commissioner and Presiding Member  
[CPeterma@energy.state.ca.us](mailto:CPeterma@energy.state.ca.us)

KAREN DOUGLAS  
Commissioner and Associate Member  
*e-mail service preferred*  
[kldougl@energy.state.ca.us](mailto:kldougl@energy.state.ca.us)

**ENERGY COMMISSION –  
DECISIONMAKERS (cont.)**

Kourtney Vaccaro  
Hearing Adviser  
*e-mail service preferred*  
[kvaccaro@energy.state.ca.us](mailto:kvaccaro@energy.state.ca.us)

Galen Lemei  
Advisor to Commissioner Douglas  
*e-mail service preferred*  
[glemei@energy.state.ca.us](mailto:glemei@energy.state.ca.us)

Jennifer Nelson  
Advisor to Commissioner Douglas  
*e-mail service preferred*  
[jinelson@energy.state.ca.us](mailto:jinelson@energy.state.ca.us)

Jim Bartridge  
Advisor to Commissioner Peterman  
[jbartrid@energy.state.ca.us](mailto:jbartrid@energy.state.ca.us)

**ENERGY COMMISSION STAFF**

Pierre Martinez  
Project Manager  
[pmartine@energy.state.ca.us](mailto:pmartine@energy.state.ca.us)

Lisa DeCarlo  
Staff Counsel  
*e-mail service preferred*  
[ldecarlo@energy.state.ca.us](mailto:ldecarlo@energy.state.ca.us)

**\*Eileen Allen**  
Commissioners' Technical  
Advisor for Facility Siting  
*e-mail service preferred*  
[ecallen@energy.state.ca.us](mailto:ecallen@energy.state.ca.us)

**ENERGY COMMISSION –  
PUBLIC ADVISER**

Jennifer Jennings  
Public Adviser's Office  
*e-mail service preferred*  
[publicadviser@energy.state.ca.us](mailto:publicadviser@energy.state.ca.us)