

**CALIFORNIA ENERGY COMMISSION**

1516 NINTH STREET  
SACRAMENTO, CA 95814-5512  
www.energy.ca.gov



January 13, 2012

**DOCKET****11-AFC-4**DATE     JAN 13 2012    RECD.     JAN 19 2012    

Sergeant Kent Krisel  
Riverside County Sheriff's Department  
Colorado River Station  
260 North Spring Street  
Blythe, CA 92225

RE: Potential Law Enforcement Needs for the Proposed Rio Mesa Solar Electric Generating Facility (RMSEGF) Project (11-AFC-4)

Dear Sergeant Krisel:

Rio Mesa Solar I, LLC, Rio Mesa Solar II, LLC, and Rio Mesa Solar III, LLC (the applicant), are seeking a license from the California Energy Commission to construct and operate a solar power generation facility. The Rio Mesa Solar Electric Generating Facility (RMSEGF or proposed project) is proposed approximately 13 miles southwest of the city of Blythe, in Riverside County, partially on private land and partially on public land administered by the Bureau of Land Management. Each solar plant would require about 1,850 acres for a total project area of approximately 5,750 for all three sites (8.98 square miles).

RMSEGF proposes three 250 megawatt (MW) (nominal) solar fields and associated facilities for a total net output of 750 MW. To assess impacts of the proposed project on law enforcement services, Energy Commission staff requests information on existing law enforcement resources and services in the project area and the estimated need for additional services if the project is approved. A form is provided as an attachment to this letter with data needs and questions highlighted. Key characteristics of the applicant's proposed project that are considered applicable to law enforcement needs assessment are briefly summarized on the form. A map of the project site is also attached.

The project applicant's entire Application for Certification (AFC) is available on the Energy Commission's website at:

< <http://www.energy.ca.gov/sitingcases/riomesa/index.html>>. Section 5.10 Socioeconomics would be the most pertinent section to review, as well as Section 5.16 Worker Health and Safety and Section 5.12 Traffic and Transportation.

We would appreciate your responses to the needs assessment form and any comments you may have regarding law enforcement services for the proposed project by March 15, 2012. Please send your responses to my attention. Thank you in advance for your time and assistance.

Sergeant Krisel  
January 13, 2012  
Page 2 of 2

Sincerely,

James Adams, Planner II  
California Energy Commission  
Siting, Transmission, and Environmental Protection Division  
1516 Ninth Street, MS 40  
Sacramento, CA 95814  
[jadams@energy.state.ca.us](mailto:jadams@energy.state.ca.us)

Tele: (916) 653-0702  
Fax: (916) 651-8868

Enclosures:  
Local Law Enforcement Needs Assessment Form  
Map showing the approximate location of the project site (from the AFC)

cc. Pierre Martinez, California Energy Commission Project Manager  
Amanda Stennick, Planner III, Supervisor

<b>Law Enforcement Needs Assessment Form</b>	
<b>Project Characteristics, as Proposed by the Project Applicant</b>	
Type, Location, Size, and Site Access:	Power generating facility (three fields) proposed on 5,750 acres in Riverside County, California, adjacent to Imperial County. Primary access to the three plants would be via 34 <sup>th</sup> Avenue and Bradshaw Trail off State Route 78 to the east. Each plant would also have perimeter access/maintenance roads.
Estimated Schedule:	Construction of the power generating facility, from site preparation and grading to commercial operation, would take approximately 36 months. If approved, construction would begin the fourth quarter of 2013 and conclude the first quarter of 2016. Construction of the shared facilities would occur during construction of the first plant. The three solar plants would be constructed with a planned three-month delay between their construction start dates. See Table 2.2-2 in the Project Description Section of the AFC for a list of the project schedule major milestones.
Construction (Traffic and Work Force):	Construction operations are expected to occur between 5 a.m. and 7 p.m. Estimated construction start times are between 5 a.m. and 7 a.m. and departure times are between 4 p.m. and 6 p.m. During certain phases of the project, some activities could continue 24 hours per day, 7 days per week. The construction schedule is estimated based on a single shift, 10-hour day, and 40-hour week. Longer work days or work weeks would be necessary to make up schedule deficiencies or to complete critical construction activities, such as large concrete pours. Truck deliveries would normally be on weekdays between 7 a.m. and 5 p.m. During the peak construction month (month 21), approximately 1,378 daily trips would occur (assumed two passenger occupancy). Daily truck traffic trips would add 159 trips, based on an adjusted one heavy vehicle is equal to a three-passenger car equivalent. Although trucks would likely arrive and depart throughout the day, the traffic analysis assumed about 55 percent would travel during the a.m. and p.m. peak hour. The number of workers on site range from a low of 5 in month 0 to a high of 2,493 in month 21. An average of 1,040 workers per month would be employed during the 36-month construction period. Between month 11 and month 28 there would be over 1,000 workers on-site and between month 19 and month 25, on-site workers increase to over 2,000.
Operation (Staff and Traffic):	The project would employ approximately 150 full-time workers; adding a minimal amount of traffic trips. The generating facility would be operated 7 days a week, typically up to 16 hours per day.
Security:	The AFC does not discuss any proposed on-site security measures.
<b>Existing Law Enforcement Resources and Services in the Project Area</b> (attach additional paper if more room is needed to answer questions)	
Names and addresses of the facilities (e.g., sheriff substations) serving the project area, and distance of closest dispatch facility to the project site:	
Adopted or desired service standard (e.g., one sworn officer per 1,000 population) applicable to the project site:	
Existing staffing levels for facilities serving the project area (including sworn officers and civilians, totals and per shift):	
Estimated response times to the project site: Priority calls:  Non-Priority calls:	
Current projected needs (e.g., facilities and staff) to maintain or meet existing service levels:	
Additional needs beyond those identified above to maintain or meet existing service	

**Law Enforcement Needs Assessment Form**

levels with the project:

Exchange of general law enforcement responsibilities (e.g., formal and/or informal agreements with local municipalities for provision of services) in the project area:

Current inventory of specialized equipment (e.g., helicopters or other aircraft):

**Estimated Need for Law Enforcement Services, Equipment, and Facilities**  
(attach additional paper if more room is needed to answer questions)

Is there a process or formula used by your department to determine the need for additional law enforcement services to serve a new large-scale power plant? Please explain.

Could the project trigger a need for additional law enforcement services for on-site crimes against persons, theft of materials, and/or vandalism? Please explain.  
 During project construction:  
  
 During project operation:

Could increased project-related traffic affect circulation and access on roads near the project site to the extent that an impact to emergency response times might occur? Please explain.  
 During project construction:  
  
 During project operation:

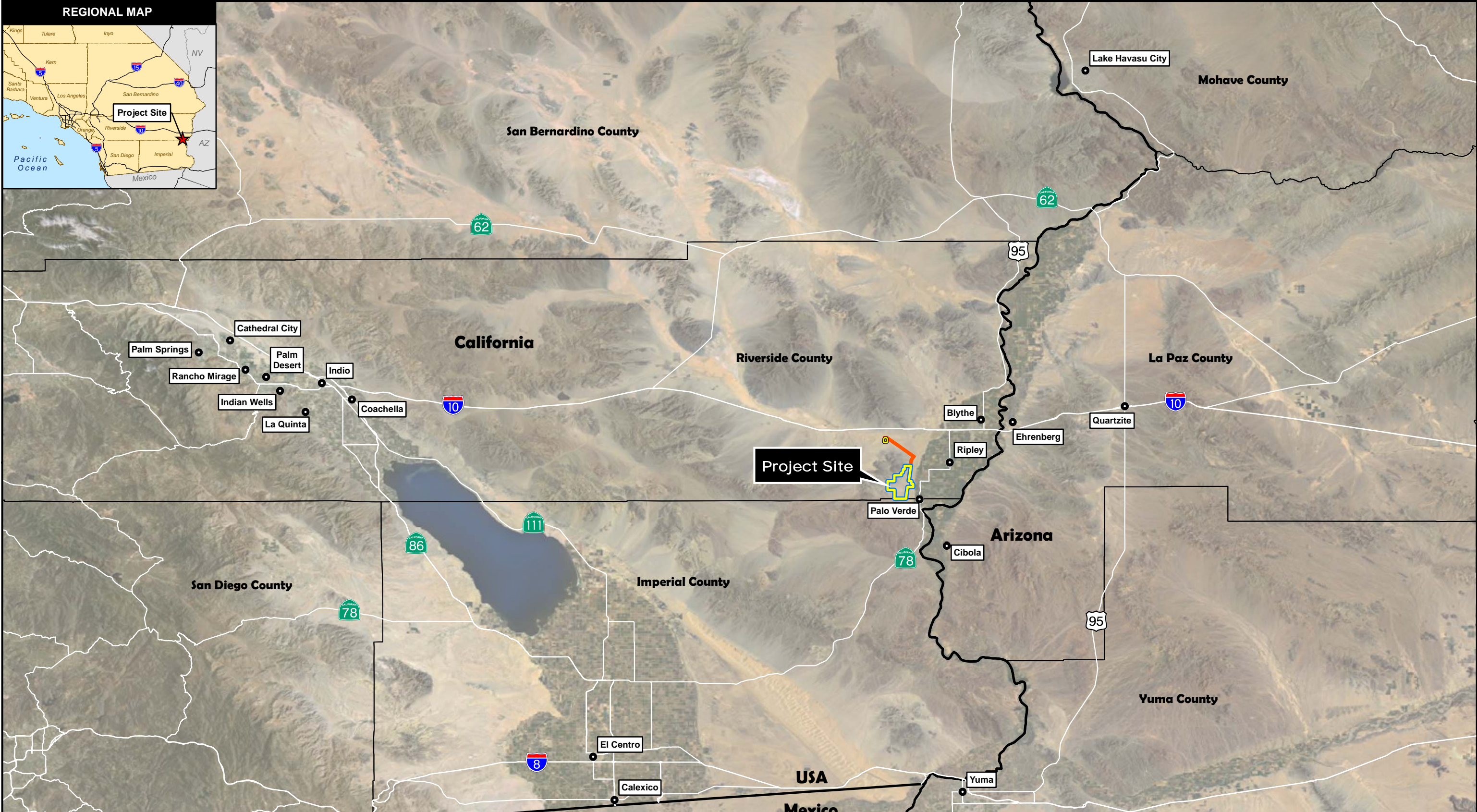
Do law enforcement personnel review development site plans for projects to assess potential law enforcement issues (e.g., lighting and other safety factors)? Please explain.

Are specific measures recommended to reduce the potential for crimes to occur at or near the project site (e.g., specific types of security fencing)? Please explain.

Please explain any other law enforcement concerns that have not been addressed by this needs assessment form.

**Person Completing This Needs Assessment Form**

Name:  
 Title/Position:  
 Telephone No:  
 E-mail Address:



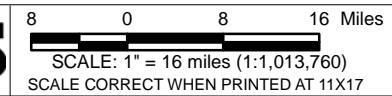
Path: G:\gis\projects\157727651002\map\_docs\mxd\AFC\_Socioeconomic\Study\_Area\_Cities.mxd, paul\_morano, 9/21/2011

**LEGEND**

- Project Site
- Transmission Line Corridor
- County Boundary
- State Boundary

**SOURCES:**  
 Project Site (BSE, 2010).  
 T-Line Corridor (VTN, 3-15-11).  
 Renewable Energy Applications (BLM 8-1-11).  
 Boundaries, Roads, Cities, States, Counties (ESRI, 2010). Imagery (NAIP, 2009).

**URS**



**SOCIOECONOMIC STUDY AREA  
 RIO MESA SOLAR ELECTRIC GENERATING FACILITY  
 RIVERSIDE COUNTY, CALIFORNIA**

CREATED BY: RC	DATE: 9/21/2011	FIG. NO: 5.10-1
PM:AL	PROJ. NO: 27651006. 50518	