

Structure and Governance of a NCCEW: Consensus points

DOCKET

11-IEP-1A

DATE	MAR 14 2011
RECD.	MAR 14 2011

- Build cross-constituency partnerships
 - Government, industry, unions, educators/trainers, certifiers, researchers
- Not based in a single existing institution
 - *“Avoid capture by any one institutional player. The players need enough self-interest to stay engaged, but without capturing. Workforce development is a fragmented world. No player has all of the pieces you want.”* - Rick McGahey, Ford Foundation
 - Small decision-making board, large advisory board
- Networked, multi-locational structure



California or National Focus?

- California focus?
 - Easier, sure to meet CA needs which are sizeable
 - Adequate scale, substantial resources
 - But the problems and many solutions are national
- National/Multi-state potential?
 - Substantial experience/capacity in other states, and real need to work in collaboration with Federal agencies
 - Greater national influence, resources
 - But would take more time, consultation; complex politics

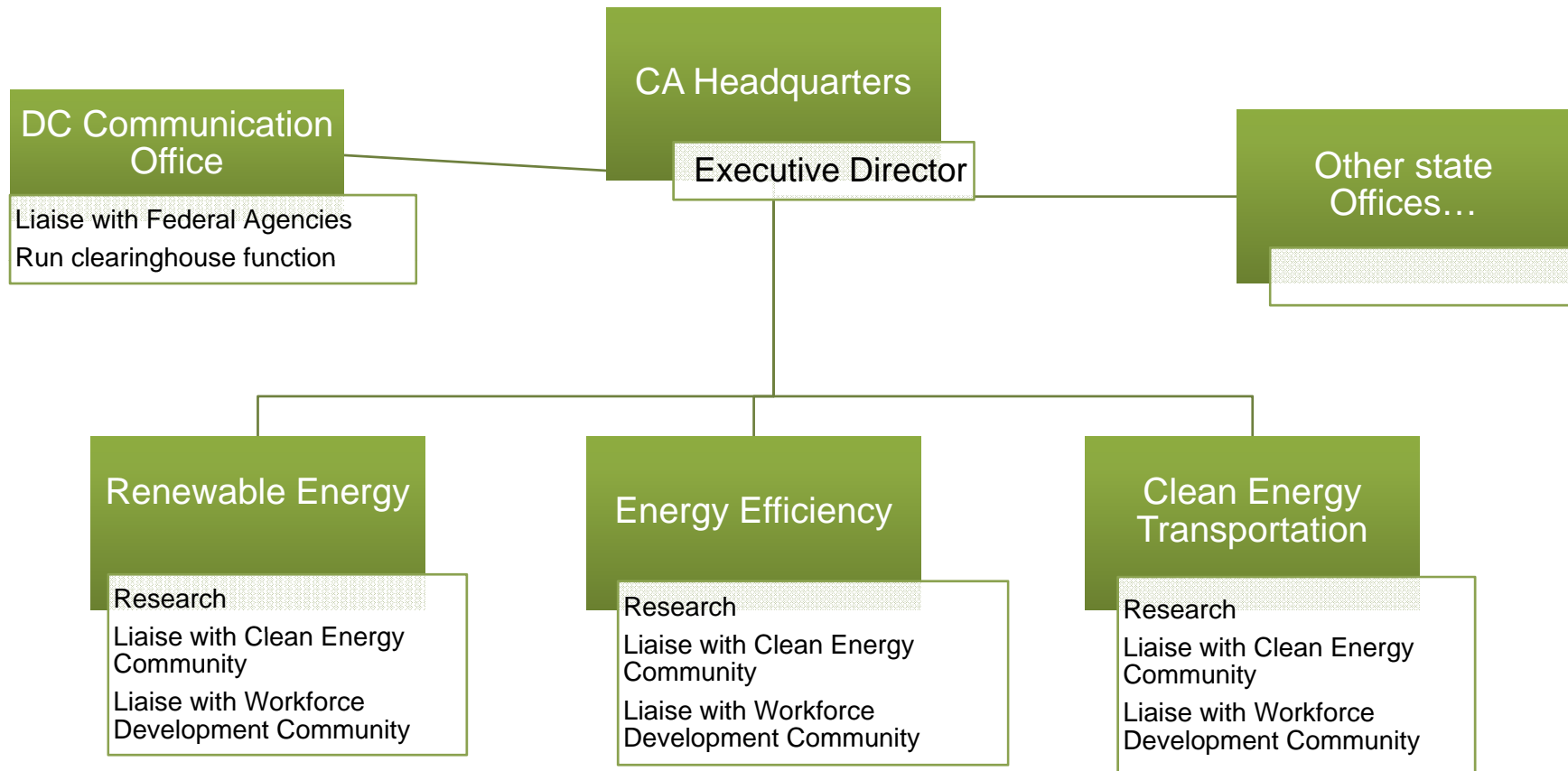


Structure: A path forward

- Launch quickly with CA HQ and small DC communications office
 - Expand to other state offices in years 2 & 3
- Launch within existing institutional home → become independent ASAP
 - Demonstrated expertise and trust with both the energy industry and workforce development practitioners
 - Work in all three sub-sectors of focus (renewable energy, energy efficiency, and clean energy transportation).
 - Demonstrated experience in convening industry-labor-educational sector partnerships and designing and implementing workforce development and training programs
 - Demonstrated record in working with students and workers from low-income communities
 - Strong networks of relationships nationally, including in California.



Possible NCCEW Structure



Governance options

- Small initial board of directors
 - Key CA and National agency representation
- Initial responsibility of working with ED to build independent organization and expand governing board
 - Clean energy community
 - Workforce development community
- Build broader stakeholder advisory committee

