



CH2M HILL

2485 Natomas Park Drive

Suite 600

Sacramento, CA 95833-2937

Tel 916.920.0300

Fax 916.920.8463

July 13, 2010

Mr. John Kessler
Siting Project Manager
California Energy Commission
1516 Ninth Street
Sacramento, CA 95814

Subject: Rice Solar Energy Project (09-AFC-10)
Supplementary Information Item (SII) #6
Revised General Arrangement, Rice Solar Energy Project

Dear Mr. Kessler:

Attached please find one hardcopy of Rice Solar Energy, LLC's Supplementary Information Item (SII) #6 - Revised General Arrangement for the Rice Solar Energy Project (09-AFC-10).

If you have any questions about this matter, please contact me at (916) 286-0278 or Sarah Madams at (916) 286-0249.

Sincerely,

CH2M HILL

A handwritten signature in blue ink, appearing to read "Douglas M. Davy".

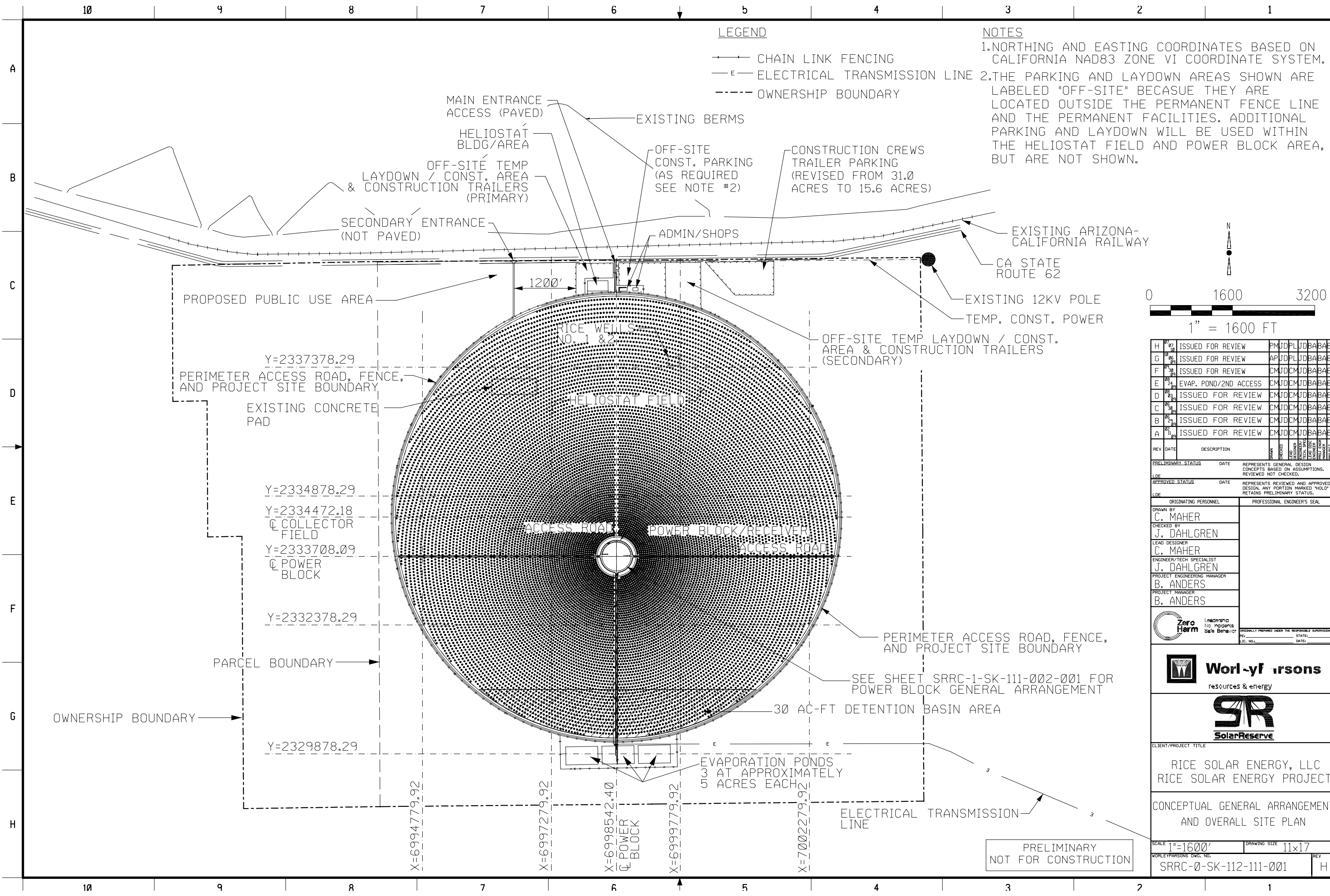
Douglas M. Davy, Ph.D.
AFC Project Manager

cc: POS List
Project File

DOCKET
09-AFC-10

DATE JUL 13 2010

RECD. JUL 13 2010

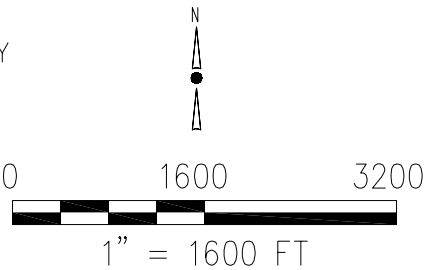


LEGEND

- CHAIN LINK FENCING
- ELECTRICAL TRANSMISSION LINE
- OWNERSHIP BOUNDARY

NOTES

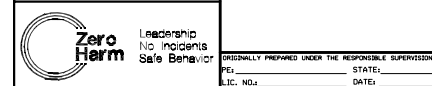
1. NORTHING AND EASTING COORDINATES BASED ON CALIFORNIA NAD83 ZONE VI COORDINATE SYSTEM.
2. THE PARKING AND LAYDOWN AREAS SHOWN ARE LABELED "OFF-SITE" BECAUSE THEY ARE LOCATED OUTSIDE THE PERMANENT FENCE LINE AND THE PERMANENT FACILITIES. ADDITIONAL PARKING AND LAYDOWN WILL BE USED WITHIN THE HELIOSTAT FIELD AND POWER BLOCK AREA, BUT ARE NOT SHOWN.



H	07/10	ISSUED FOR REVIEW	PMJDPLJDBABABA
G	06/09	ISSUED FOR REVIEW	APJDPLJDBABABA
F	05/08	ISSUED FOR REVIEW	CMJDCMJDBABABA
E	04/07	EVAP. POND/2ND ACCESS	CMJDCMJDBABABA
D	03/06	ISSUED FOR REVIEW	CMJDCMJDBABABA
C	02/05	ISSUED FOR REVIEW	CMJDCMJDBABABA
B	01/04	ISSUED FOR REVIEW	CMJDCMJDBABABA
A	00/03	ISSUED FOR REVIEW	CMJDCMJDBABABA
REV	DATE	DESCRIPTION	DRAWN CHECKED DESIGNER ENGINEER/TECH LEAD DESIGNER PROJECT ENGINEER PROJECT MANAGER

PRELIMINARY STATUS DATE REPRESENTS GENERAL DESIGN CONCEPTS BASED ON ASSUMPTIONS. REVIEWED NOT CHECKED.
APPROVED STATUS DATE REPRESENTS REVIEWED AND APPROVED DESIGN. ANY PORTION MARKED "HOLD" RETAINS PRELIMINARY STATUS.

ORIGINATING PERSONNEL	PROFESSIONAL ENGINEER'S SEAL
DRAWN BY C. MAHER	
CHECKED BY J. DAHLGREN	
LEAD DESIGNER C. MAHER	
ENGINEER/TECH SPECIALIST J. DAHLGREN	
PROJECT ENGINEERING MANAGER B. ANDERS	
PROJECT MANAGER B. ANDERS	

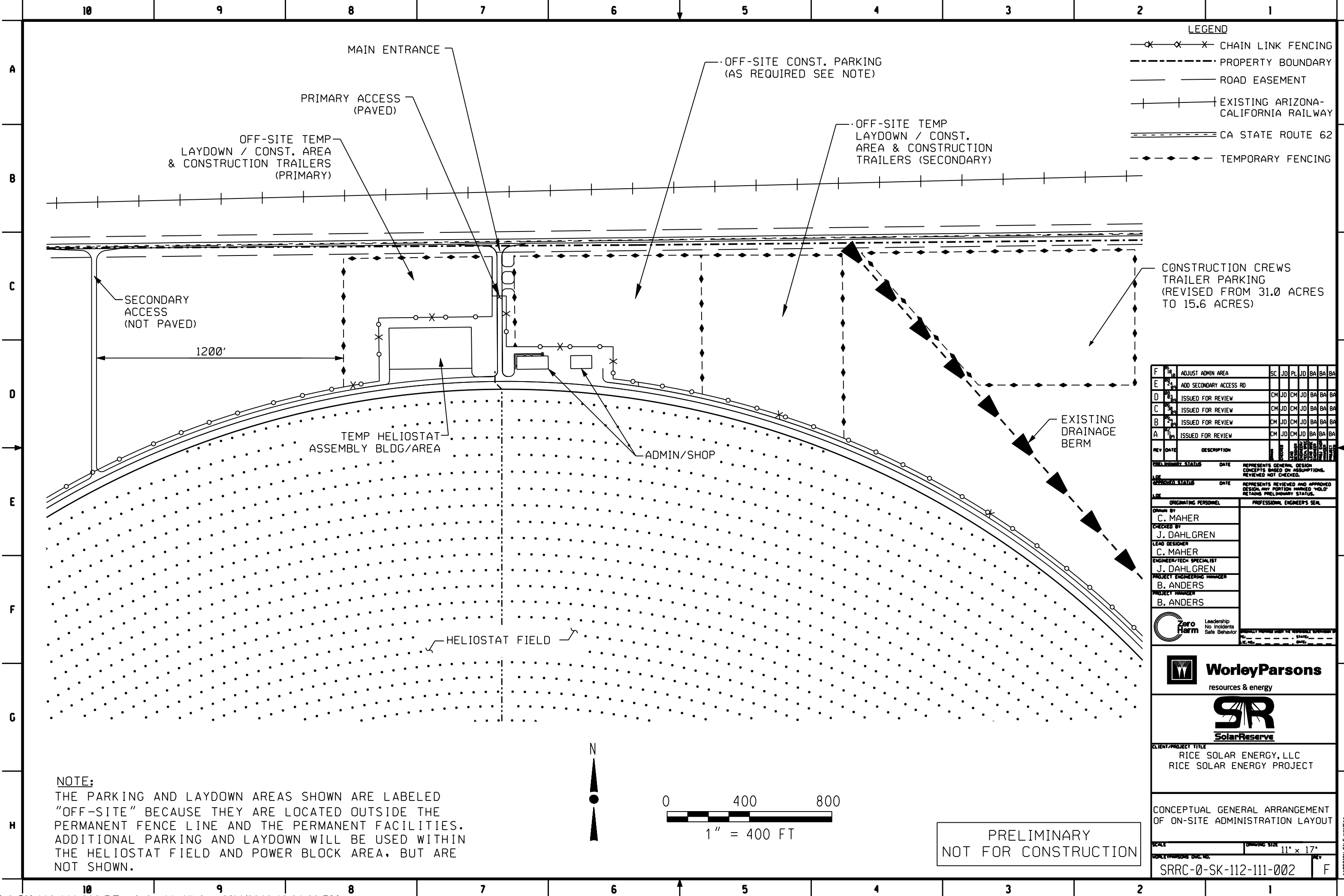


CLIENT/PROJECT TITLE
RICE SOLAR ENERGY, LLC
RICE SOLAR ENERGY PROJECT

CONCEPTUAL GENERAL ARRANGEMENT
AND OVERALL SITE PLAN

SCALE 1"=1600'	DRAWING SIZE 11x17
WORLDWIDE DESIGN, INC.	REV
SRRC-0-SK-112-111-001	H

PRELIMINARY
NOT FOR CONSTRUCTION



LEGEND

- CHAIN LINK FENCING
- PROPERTY BOUNDARY
- ROAD EASEMENT
- EXISTING ARIZONA-CALIFORNIA RAILWAY
- CA STATE ROUTE 62
- TEMPORARY FENCING

CONSTRUCTION CREWS TRAILER PARKING (REVISED FROM 31.0 ACRES TO 15.6 ACRES)

F	10	ADJUST ADMIN AREA	SC	JD	PL	JD	BA	BA	BA
E	9	ADD SECONDARY ACCESS RD	CM	JD	CM	JD	BA	BA	BA
D	8	ISSUED FOR REVIEW	CM	JD	CM	JD	BA	BA	BA
C	7	ISSUED FOR REVIEW	CM	JD	CM	JD	BA	BA	BA
B	6	ISSUED FOR REVIEW	CM	JD	CM	JD	BA	BA	BA
A	5	ISSUED FOR REVIEW	CM	JD	CM	JD	BA	BA	BA

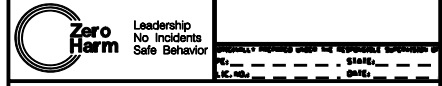
REV DATE DESCRIPTION

ORIGINATING PERSONNEL DATE REPRESENTS GENERAL DESIGN CONCEPTS BASED ON ASSUMPTIONS. REVIEWED NOT CHECKED.

DESIGNED STATUS DATE REPRESENTS REVIEWED AND APPROVED DESIGN. ANY PORTION MARKED "HOLD" RETAINS PRELIMINARY STATUS.

ORIGINATING PERSONNEL PROFESSIONAL ENGINEER'S SEAL

DRAWN BY
C. MAHER
CHECKED BY
J. DAHLGREN
LEAD DESIGNER
C. MAHER
ENGINEER/TECH SPECIALIST
J. DAHLGREN
PROJECT ENGINEERING MANAGER
B. ANDERS
PROJECT MANAGER
B. ANDERS



CLIENT/PROJECT TITLE
RICE SOLAR ENERGY, LLC
RICE SOLAR ENERGY PROJECT

CONCEPTUAL GENERAL ARRANGEMENT OF ON-SITE ADMINISTRATION LAYOUT

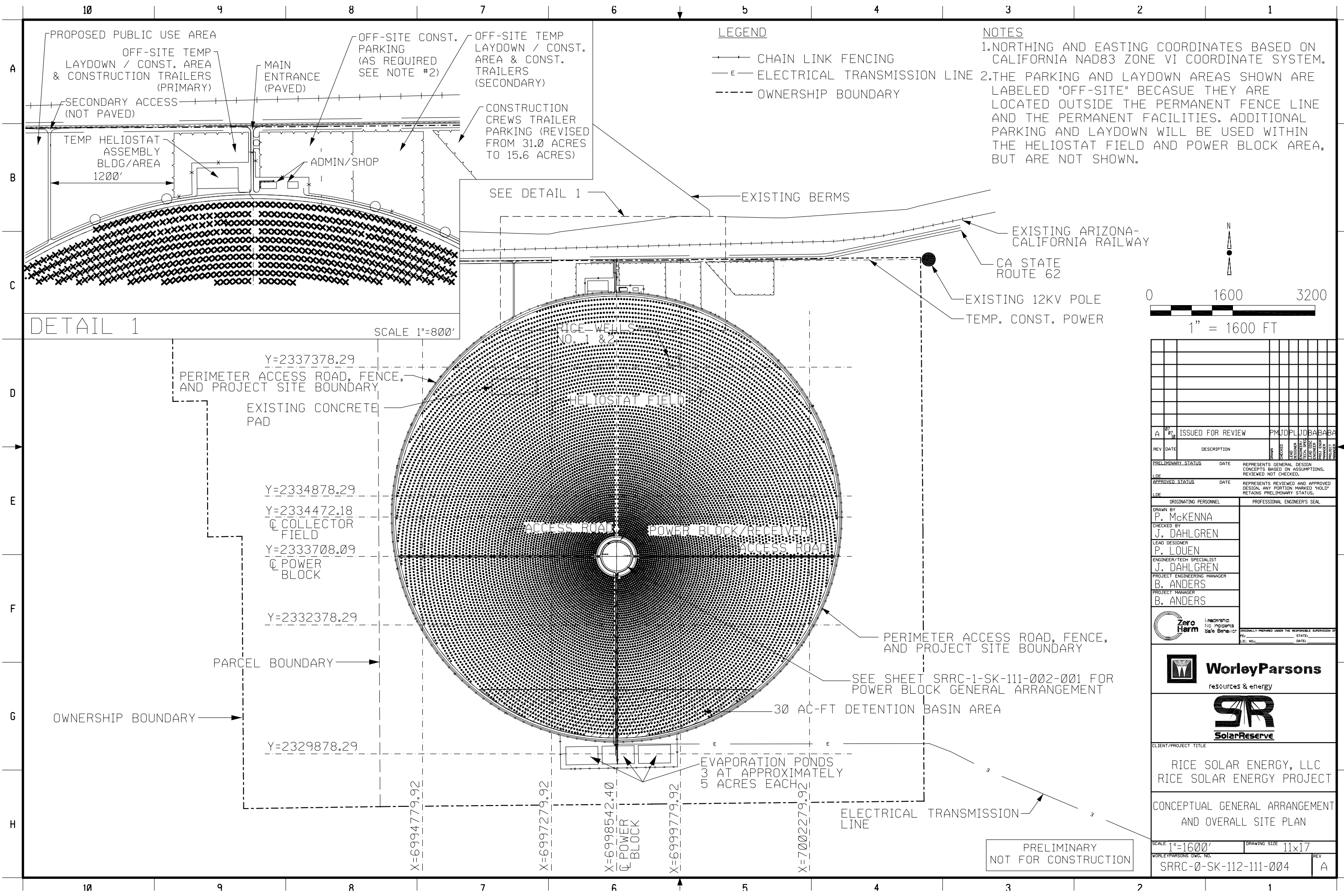
SCALE: 11" x 17"

WORLEYPARSONS DOC. NO. SRRC-0-SK-112-111-002

DATE: 6/11/2010

NOTE:
THE PARKING AND LAYDOWN AREAS SHOWN ARE LABELED "OFF-SITE" BECAUSE THEY ARE LOCATED OUTSIDE THE PERMANENT FENCE LINE AND THE PERMANENT FACILITIES. ADDITIONAL PARKING AND LAYDOWN WILL BE USED WITHIN THE HELIOSTAT FIELD AND POWER BLOCK AREA, BUT ARE NOT SHOWN.

PRELIMINARY
NOT FOR CONSTRUCTION



LEGEND

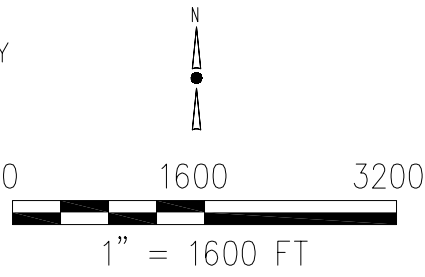
- CHAIN LINK FENCING
- ELECTRICAL TRANSMISSION LINE
- OWNERSHIP BOUNDARY

NOTES

1. NORTHING AND EASTING COORDINATES BASED ON CALIFORNIA NAD83 ZONE VI COORDINATE SYSTEM.
2. THE PARKING AND LAYDOWN AREAS SHOWN ARE LABELED "OFF-SITE" BECAUSE THEY ARE LOCATED OUTSIDE THE PERMANENT FENCE LINE AND THE PERMANENT FACILITIES. ADDITIONAL PARKING AND LAYDOWN WILL BE USED WITHIN THE HELIOSTAT FIELD AND POWER BLOCK AREA, BUT ARE NOT SHOWN.

DETAIL 1

SCALE 1"=800'



																																																																																																																																																																																																																																																																																																																																																																																																																																																																																																																																																																																																																																																																																																																																																																																																																																																																																																																																																																																																																																																																																																																																																																																																																																																																																																																																																																																																																					</
--	--	--	--	--	--	--	--	--	--	--	--	--	--	--	--	--	--	--	--	--	--	--	--	--	--	--	--	--	--	--	--	--	--	--	--	--	--	--	--	--	--	--	--	--	--	--	--	--	--	--	--	--	--	--	--	--	--	--	--	--	--	--	--	--	--	--	--	--	--	--	--	--	--	--	--	--	--	--	--	--	--	--	--	--	--	--	--	--	--	--	--	--	--	--	--	--	--	--	--	--	--	--	--	--	--	--	--	--	--	--	--	--	--	--	--	--	--	--	--	--	--	--	--	--	--	--	--	--	--	--	--	--	--	--	--	--	--	--	--	--	--	--	--	--	--	--	--	--	--	--	--	--	--	--	--	--	--	--	--	--	--	--	--	--	--	--	--	--	--	--	--	--	--	--	--	--	--	--	--	--	--	--	--	--	--	--	--	--	--	--	--	--	--	--	--	--	--	--	--	--	--	--	--	--	--	--	--	--	--	--	--	--	--	--	--	--	--	--	--	--	--	--	--	--	--	--	--	--	--	--	--	--	--	--	--	--	--	--	--	--	--	--	--	--	--	--	--	--	--	--	--	--	--	--	--	--	--	--	--	--	--	--	--	--	--	--	--	--	--	--	--	--	--	--	--	--	--	--	--	--	--	--	--	--	--	--	--	--	--	--	--	--	--	--	--	--	--	--	--	--	--	--	--	--	--	--	--	--	--	--	--	--	--	--	--	--	--	--	--	--	--	--	--	--	--	--	--	--	--	--	--	--	--	--	--	--	--	--	--	--	--	--	--	--	--	--	--	--	--	--	--	--	--	--	--	--	--	--	--	--	--	--	--	--	--	--	--	--	--	--	--	--	--	--	--	--	--	--	--	--	--	--	--	--	--	--	--	--	--	--	--	--	--	--	--	--	--	--	--	--	--	--	--	--	--	--	--	--	--	--	--	--	--	--	--	--	--	--	--	--	--	--	--	--	--	--	--	--	--	--	--	--	--	--	--	--	--	--	--	--	--	--	--	--	--	--	--	--	--	--	--	--	--	--	--	--	--	--	--	--	--	--	--	--	--	--	--	--	--	--	--	--	--	--	--	--	--	--	--	--	--	--	--	--	--	--	--	--	--	--	--	--	--	--	--	--	--	--	--	--	--	--	--	--	--	--	--	--	--	--	--	--	--	--	--	--	--	--	--	--	--	--	--	--	--	--	--	--	--	--	--	--	--	--	--	--	--	--	--	--	--	--	--	--	--	--	--	--	--	--	--	--	--	--	--	--	--	--	--	--	--	--	--	--	--	--	--	--	--	--	--	--	--	--	--	--	--	--	--	--	--	--	--	--	--	--	--	--	--	--	--	--	--	--	--	--	--	--	--	--	--	--	--	--	--	--	--	--	--	--	--	--	--	--	--	--	--	--	--	--	--	--	--	--	--	--	--	--	--	--	--	--	--	--	--	--	--	--	--	--	--	--	--	--	--	--	--	--	--	--	--	--	--	--	--	--	--	--	--	--	--	--	--	--	--	--	--	--	--	--	--	--	--	--	--	--	--	--	--	--	--	--	--	--	--	--	--	--	--	--	--	--	--	--	--	--	--	--	--	--	--	--	--	--	--	--	--	--	--	--	--	--	--	--	--	--	--	--	--	--	--	--	--	--	--	--	--	--	--	--	--	--	--	--	--	--	--	--	--	--	--	--	--	--	--	--	--	--	--	--	--	--	--	--	--	--	--	--	--	--	--	--	--	--	--	--	--	--	--	--	--	--	--	--	--	--	--	--	--	--	--	--	--	--	--	--	--	--	--	--	--	--	--	--	--	--	--	--	--	--	--	--	--	--	--	--	--	--	--	--	--	--	--	--	--	--	--	--	--	--	--	--	--	--	--	--	--	--	--	--	--	--	--	--	--	--	--	--	--	--	--	--	--	--	--	--	--	--	--	--	--	--	--	--	--	--	--	--	--	--	--	--	--	--	--	--	--	--	--	--	--	--	--	--	--	--	--	--	--	--	--	--	--	--	--	--	--	--	--	--	--	--	--	--	--	--	--	--	--	--	--	--	--	--	--	--	--	--	--	--	--	--	--	--	--	--	--	--	--	--	--	--	--	--	--	--	--	--	--	--	--	--	--	--	--	--	--	--	--	--	--	--	--	--	--	--	--	--	--	--	--	--	--	--	--	--	--	--	--	--	--	--	--	--	--	--	--	--	--	--	--	--	--	--	--	--	--	--	--	--	--	--	--	--	--	--	--	--	--	--	--	--	--	--	--	--	--	--	--	--	--	--	--	--	--	--	--	--	--	--	--	--	--	--	--	--	--	--	--	--	--	--	--	--	--	--	--	--	--	--	--	--	--	--	--	--	--	--	--	--	--	--	--	--	--	--	--	--	--	--	--	--	--	--	--	--	--	--	--	--	--	--	--	--	--	--	--	--	--	--	--	--	--	--	--	--	--	--	--	--	--	--	--	--	--	--	--	--	--	--	--	--	--	--	--	--	--	--	--	--	--	--	--	--	--	--	--	--	--	--	--	--	--	--	--	--	--	--	--	--	--	--	--	--	--	--	--	--	--	--	--	--	--	--	--	--	--	--	--	--	--	--	--	--	--	--	--	--	--	--	--	--	--	--	--	--	--	--	--	--	--	--	--	--	--	--	--	--	--	--	--	--	--	--	--	--	--	--	--	--	--	--	--	--	--	--	--	--	--	--	--	--	--	--	--	--	--	--	--	--	--	--	--	--	--	--	--	--	--	--	--	--	--	--	--	--	--	--	--	--	--	--	--	--	--	--	--	--	--	--	--	--	--	--	--	--	--	--	--	--	--	--	--	--	--	--	--	--	--	--	--	--	--	--	--	--	--	--	--	--	--	--	--	--	--	--	--	--	--	--	--	--	--	--	--	--	--	--	--	--	--	--	--	--	--	--	--	--	--	--	--	--	--	--	--	--	--	--	--	--	--	--	--	--	--	--	--	--	--	--	--	--	--	--	--	--	--	--	--	--	--	--	--	--	--	--	--	--	--	--	--	--	--	--	--	--	--	--	--	--	--	--	--	--	--	--	--	--	--	--	--	--	--	--	--	--	--	--	--	--	--	--	--	--	----



BEFORE THE ENERGY RESOURCES CONSERVATION AND DEVELOPMENT
COMMISSION OF THE STATE OF CALIFORNIA
1516 NINTH STREET, SACRAMENTO, CA 95814
1-800-822-6228 – WWW.ENERGY.CA.GOV

**APPLICATION FOR CERTIFICATION
FOR THE *RICE SOLAR ENERGY POWER
PLANT PROJECT***

Docket No. 09-AFC-10

***PROOF OF SERVICE*
(Revised 3/4/2010)**

APPLICANT

Jeffrey Benoit
Project Manager
Solar Reserve
2425 Olympic Boulevard, Ste. 500 East
Santa Monica, CA 90404
Jeffrey.Benoit@solarreserve.com

Allison Shaffer
Bureau of Land Management
Palm Springs/South Coast Field Office
1201 Bird Center Drive
Palm Springs, Ca 92262
allison_shaffer@blm.gov

APPLICANT'S CONSULTANTS

Andrea Grenier
Grenier and Associates
1420 East Roseville Parkway, Ste. 140-377
Roseville, CA 95661
andrea@agrenier.com

INTERVENORS

ENERGY COMMISSION

***ROBERT WEISENMILLER**
Commissioner and Presiding Member
rweisenm@energy.state.ca.us

Douglas Davy
CH2MHILL
2485 Natomas Park Drive, Ste. 600
Sacramento, CA 95833
ddavy@ch2m.com

***KAREN DOUGLAS**
Chairman and Associate Member
kldougla@energy.state.ca.us

COUNSEL FOR APPLICANT

Scott Galati
Galati & Blek, LLP
455 Capitol Mall, Suite 350
Sacramento, CA 95814
sgalati@gb-llp.com

Kourtney Vaccaro
Hearing Officer
kvaccaro@energy.state.ca.us

John Kessler
Siting Project Manager
jkessler@energy.state.ca.us

INTERESTED AGENCIES

California ISO
e-recipient@caiso.com

Deborah Dyer
Staff Counsel
ddyer@energy.state.ca.us

Liana Reilly
Western Area Power Administration
PO Box 281213
Lakewood CO 80228-8213
reilly@wapa.gov

***Jennifer Jennings**
Public Adviser's Office
publicadviser@energy.state.ca.us

DECLARATION OF SERVICE

I, Mary Finn, declare that on July 13, 2010, I served and filed copies of the attached, 09-AFC-10-RSEP Supplementary Information Item (SII) #6 - Revised General Arrangement. The original document, filed with the Docket Unit, is accompanied by a copy of the most recent Proof of Service list, located on the web page for this project at: [<http://www.energy.ca.gov/sitingcases/ricesolar>].

The documents have been sent to both the other parties in this proceeding (as shown on the Proof of Service list) and to the Commission's Docket Unit, in the following manner:

(Check all that Apply)

FOR SERVICE TO ALL OTHER PARTIES:

x ____ sent electronically to all email addresses on the Proof of Service list;

____ by personal delivery

____ by delivering on this date for mailing with the United States Postal Service with first-class postage thereon fully prepaid, to the name and address of the person served, for the mailing that same day in the ordinary course of business; that the envelope was sealed and placed for collection and mailing on that date to those addresses **NOT** marked "email preferred."

AND

FOR FILING WITH THE ENERGY COMMISSION:

x ____ sending an original paper copy and one electronic copy, mailed and emailed respectively, to the address below (***preferred method***);

OR

____ depositing in the mail an original and 12 paper copies, as follows:

CALIFORNIA ENERGY COMMISSION

Attn: Docket No. 09-AFC-10

1516 Ninth Street, MS-4

Sacramento, CA 95814-5512

docket@energy.state.ca.us

I declare under penalty of perjury that the foregoing is true and correct.



Mary Finn