

Hi Maria - Please docket this attached document when you have time. It's for the CPVVS project.

Thanks,

Rod Jones
Project Manager
Siting, Transmission and Environmental Protection Division
California Energy Commission
1516 Ninth Street MS-15
Sacramento, CA
916/654-5191 (DL)
916-654-3882 FAX

DOCKET	
08-AFC-11	
DATE	<u>08/19/09</u>
RECD.	<u>08/19/09</u>

RJones@energy.state.ca.us

>>> <Doug.Davy@CH2M.com> 8/19/2009 2:39 PM >>>

Rod,

Here is the revised and corrected noise monitoring location figure for CPV Vaca Station Data Request #54. Please let me know if Staff has other questions or requires additional information.

Regards,

Doug Davy
CH2M HILL
(916) 286-0278
ddavy@ch2m.com

-----Original Message-----

From: Rod Jones [<mailto:RJones@energy.state.ca.us>]

Sent: August 18, 2009 10:09 AM

To: Davy, Doug/SAC

Subject: Fwd: RE: July Response to CEC staff Data Requests for Noise (#54)

Doug - I'm following up on the e-mail sent to you last Thursday regarding Figure DR54-1. Is the map being updated?

Thanks,

Rod Jones

Project Manager
Siting, Transmission and Environmental Protection Division California Energy
Commission
1516 Ninth Street MS-15
Sacramento, CA
916/654-5191 (DL)
916-654-3882 FAX

RJones@energy.state.ca.us

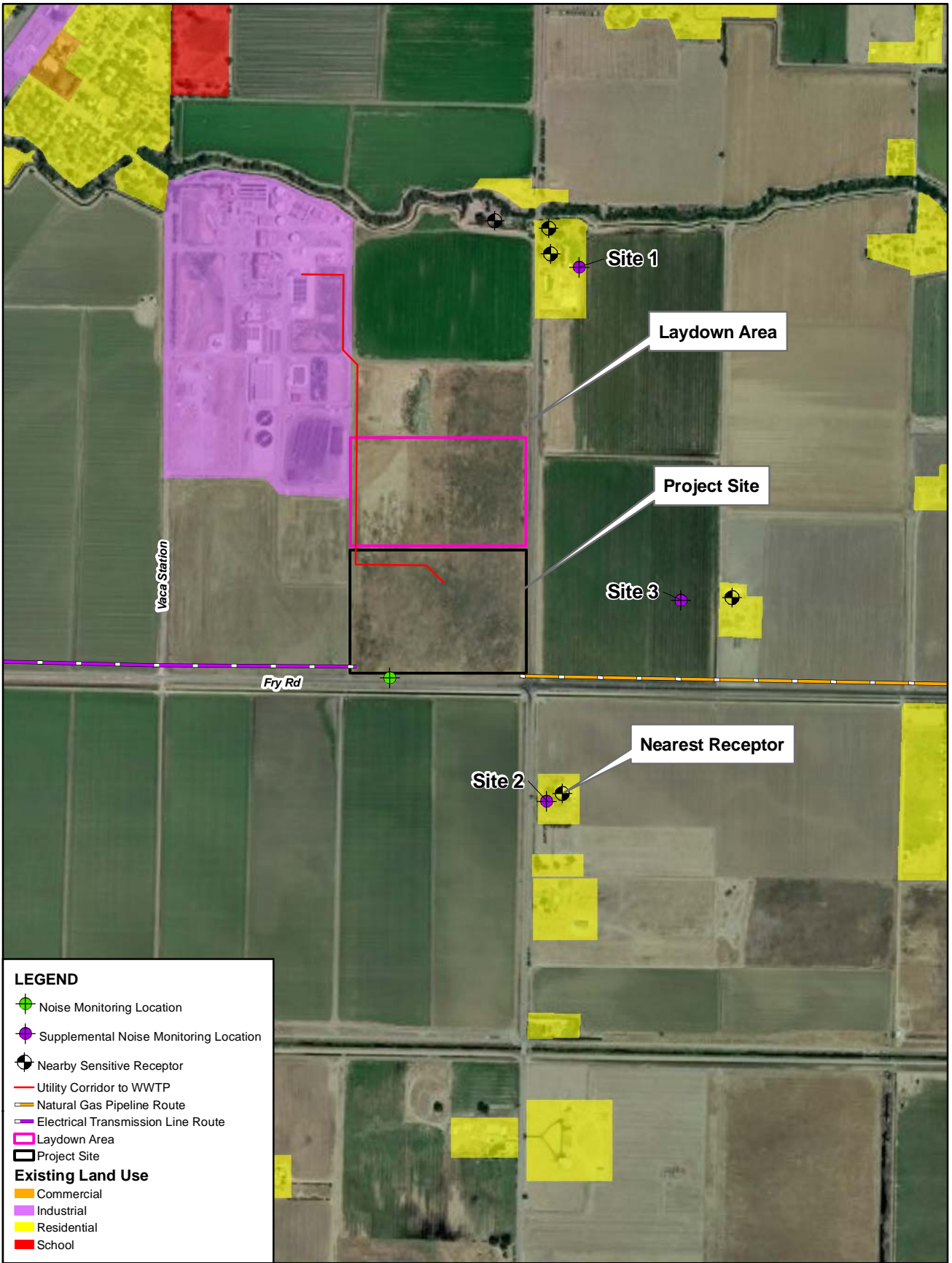
>>> Rod Jones 8/13/2009 11:08 AM >>>

Hi Doug - Shahab Khoshmashrab who is working on the Noise section of the PSA stated that it's unclear which residences shown in Figure DR54-1 Noise Monitoring Location are the ones discussed in your response to questions 54, with the exception of the nearest receptor. Can you have the map revised and e-mail a new version to me?

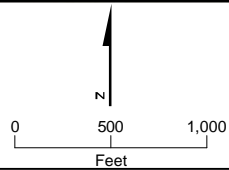
Thanks,

Rod Jones
Project Manager
Siting, Transmission and Environmental Protection Division California Energy
Commission
1516 Ninth Street MS-15
Sacramento, CA
916/654-5191 (DL)
916-654-3882 FAX

RJones@energy.state.ca.us



**FIGURE DR54-1
SUPPLEMENTAL NOISE
MONITORING LOCATIONS**
CPV VACA STATION
VACAVILLE, CA



This map was compiled from various scale source data and maps and is intended for use as only an approximate representation of actual locations.