

DOCKET

09-IEP-1J

DATE May 14 2009

RECD. May 12 2009

Wayne Tomlinson
El Paso Natural Gas Company
EPNG South System Connectivity

CEC Workshop

Natural Gas Supply under Uncertainty

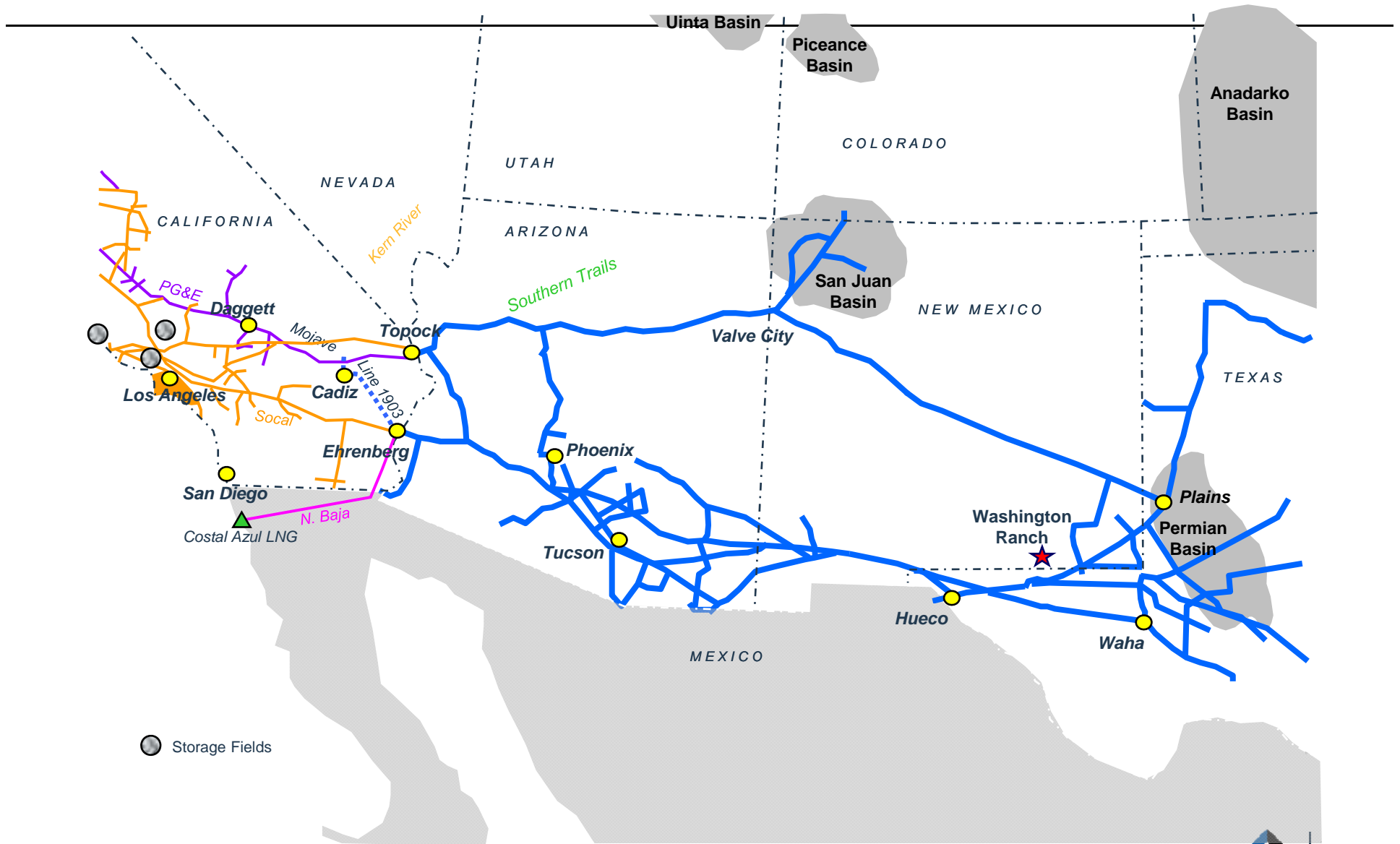
May 14th, 2009



Cautionary Statement Regarding Forward-looking Statements

This presentation includes forward-looking statements and projections, made in reliance on the safe harbor provisions of the Private Securities Litigation Reform Act of 1995. The company has made every reasonable effort to ensure that the information and assumptions on which these statements and projections are based are current, reasonable, and complete. However, a variety of factors could cause actual results to differ materially from the projections, anticipated results or other expectations expressed in this presentation, including, without limitation, our ability to successfully contract, build and operate the pipeline projects described in this presentation; changes in supply of natural gas; general economic and weather conditions in geographic regions or markets served by El Paso Corporation and its affiliates, or where operations of the company and its affiliates are located; the uncertainties associated with governmental regulation; competition, and other factors described in the company's (and its affiliates') Securities and Exchange Commission filings. While the company makes these statements and projections in good faith, neither the company nor its management can guarantee that anticipated future results will be achieved. Reference must be made to those filings for additional important factors that may affect actual results. The company assumes no obligation to publicly update or revise any forward-looking statements made herein or any other forward-looking statements made by the company, whether as a result of new information, future events, or otherwise.

EPNG Pipeline System

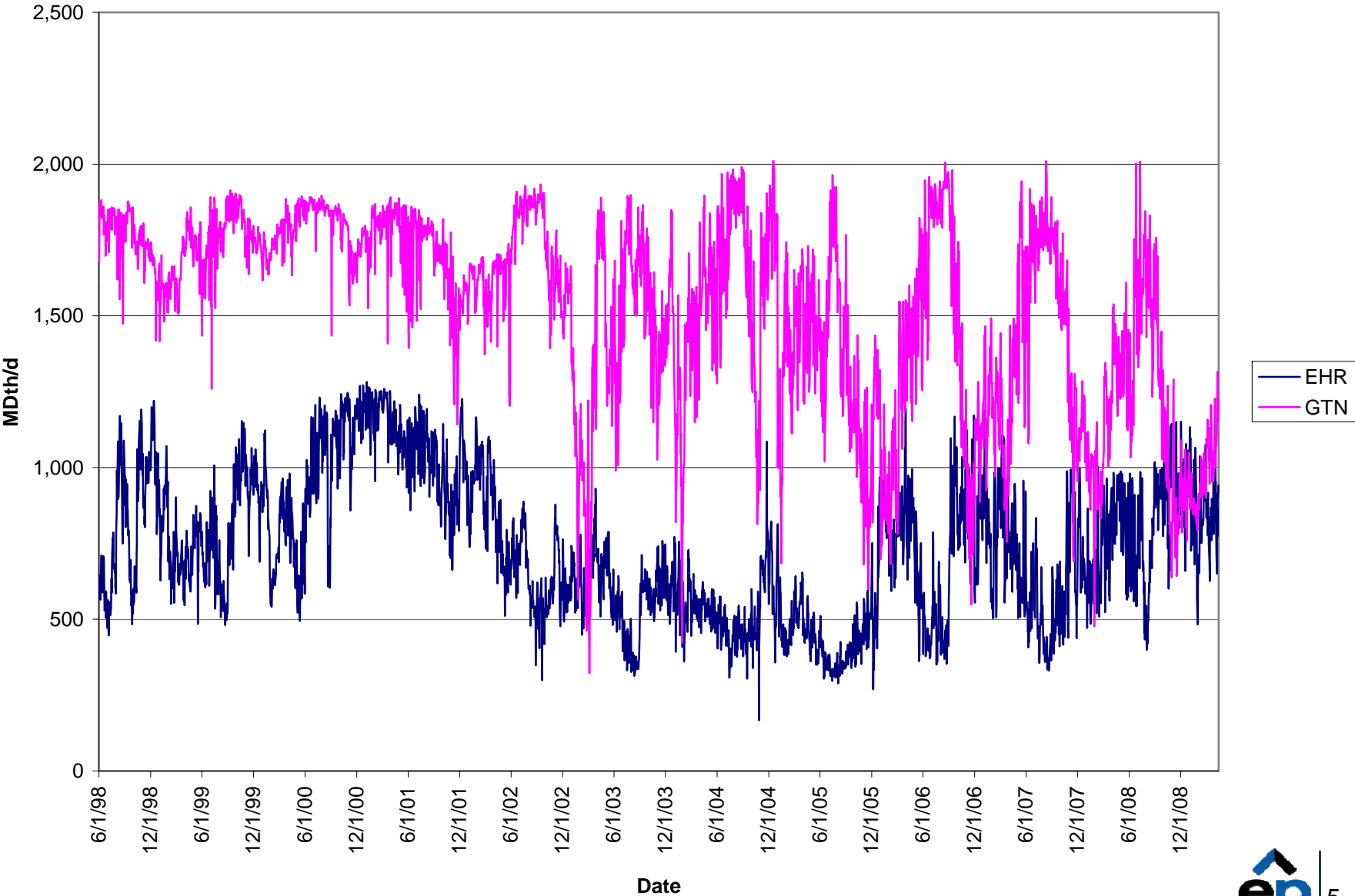


Storage Fields

This & That

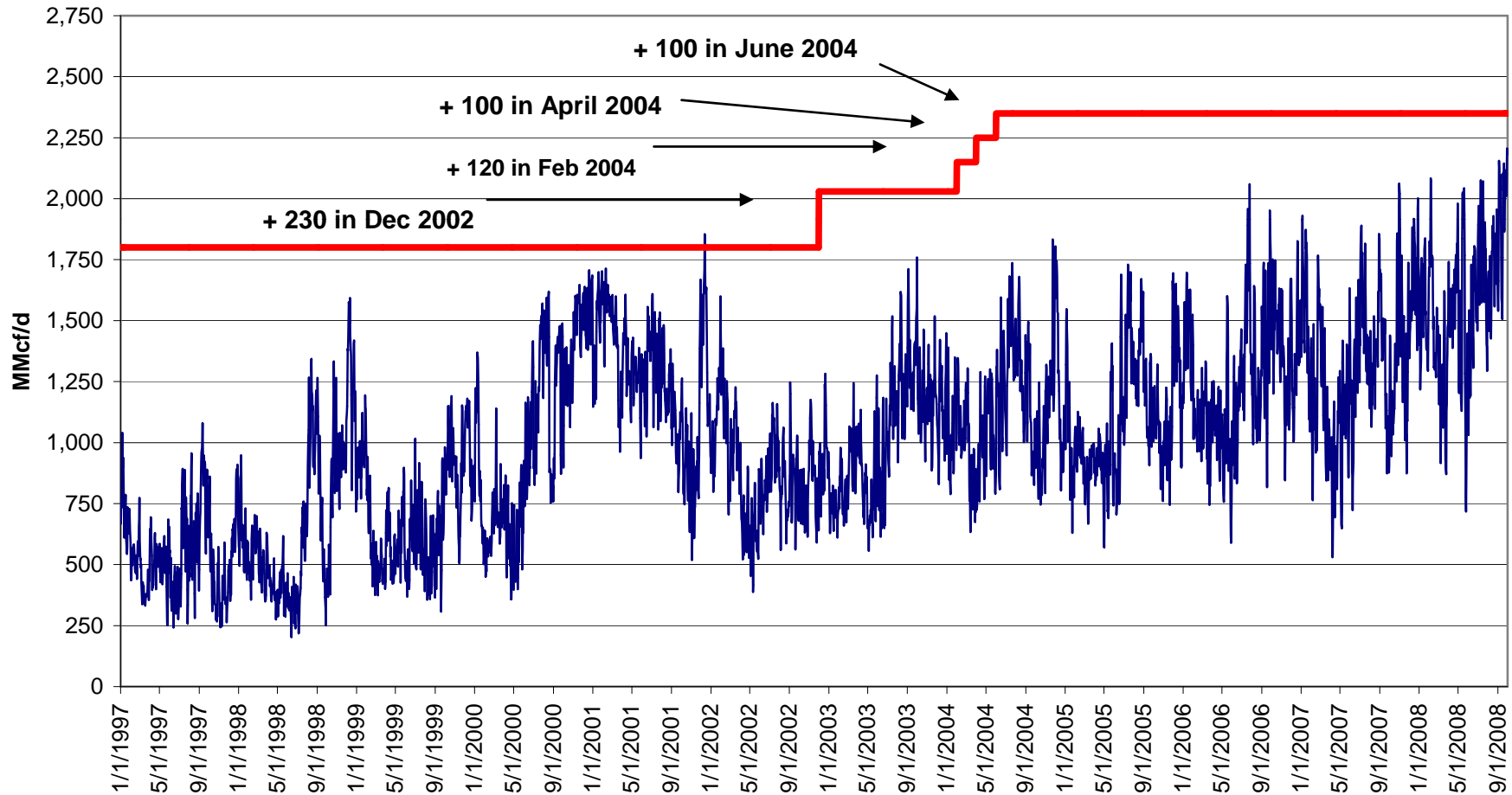
- ^ Expansions to California GTN/KR/Mojave
- ^ Growing California Gas Fired Electricity
- ^ Growing EOC Gas Fired Electricity
- ^ Line 2000 Expansion
- ^ REX Expansion East
- ^ Decrease in Canadian Supplies
- ^ Increase in Shale Production
- ^ LNG Costal Azul
- ^ TW Phoenix Expansion
- ^ GHG Environmental Factors
- ^ Economy

El Paso Natural Gas Company Delivery Comparison Between GTN & EPNG Ehrenberg



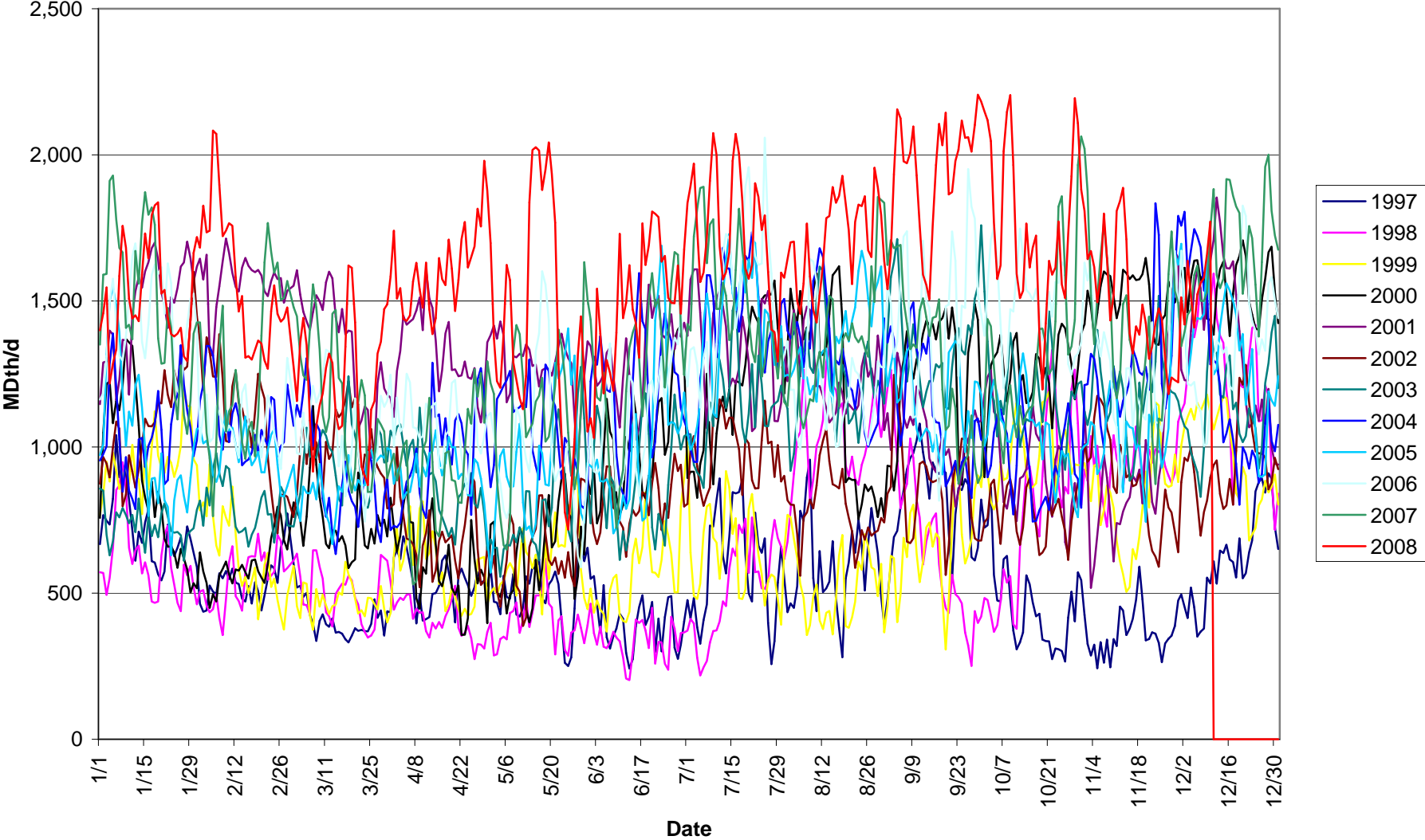
El Paso Natural Gas Company

EPNG's West Flows on the South System Mainline at Cornudas 1997 to Present
(Flows include fuel and deliveries to Clint Jct. and Dell City) MMcf/d 1/

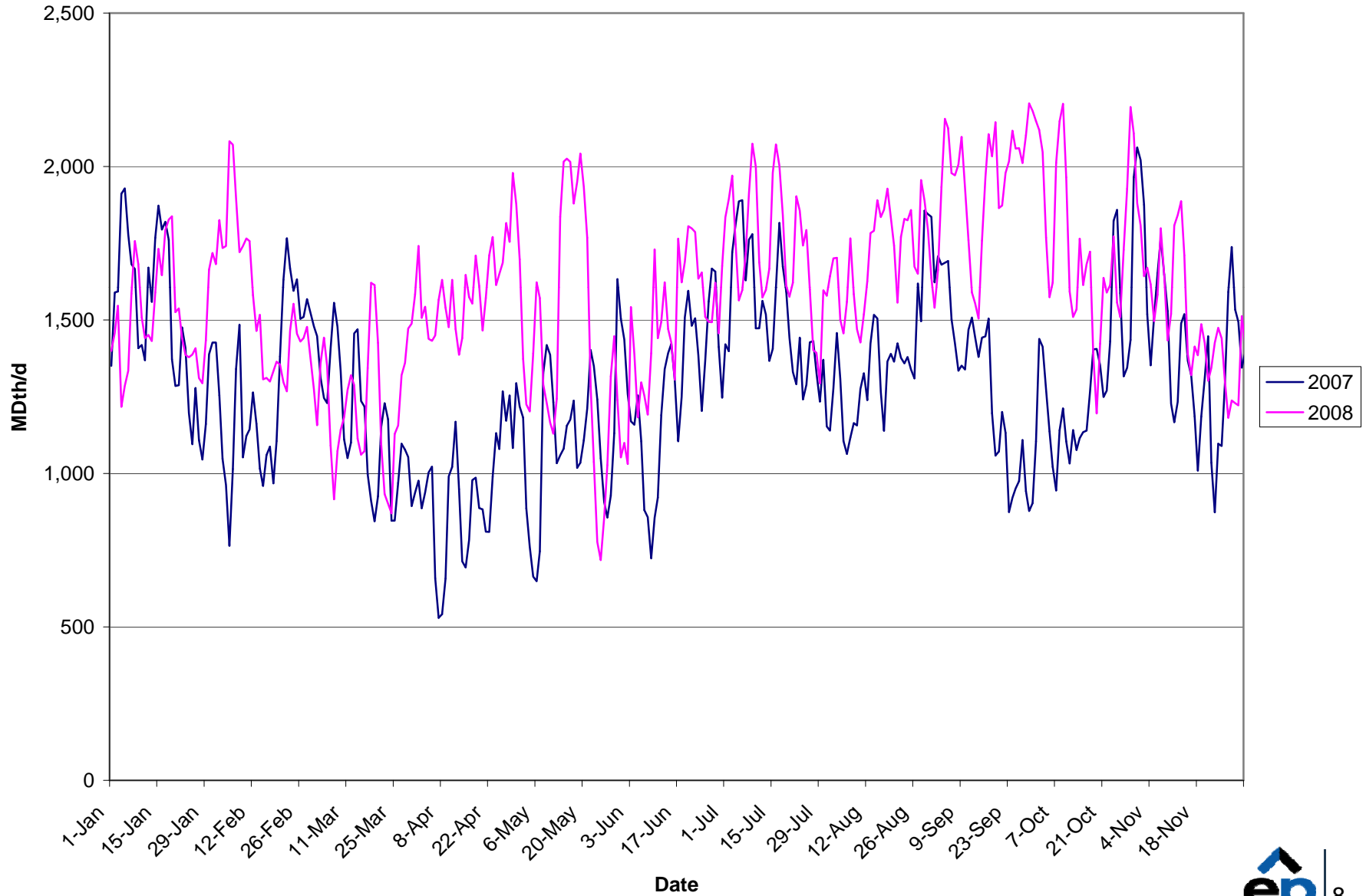


1/ Winter Capacity was used for the entire time period

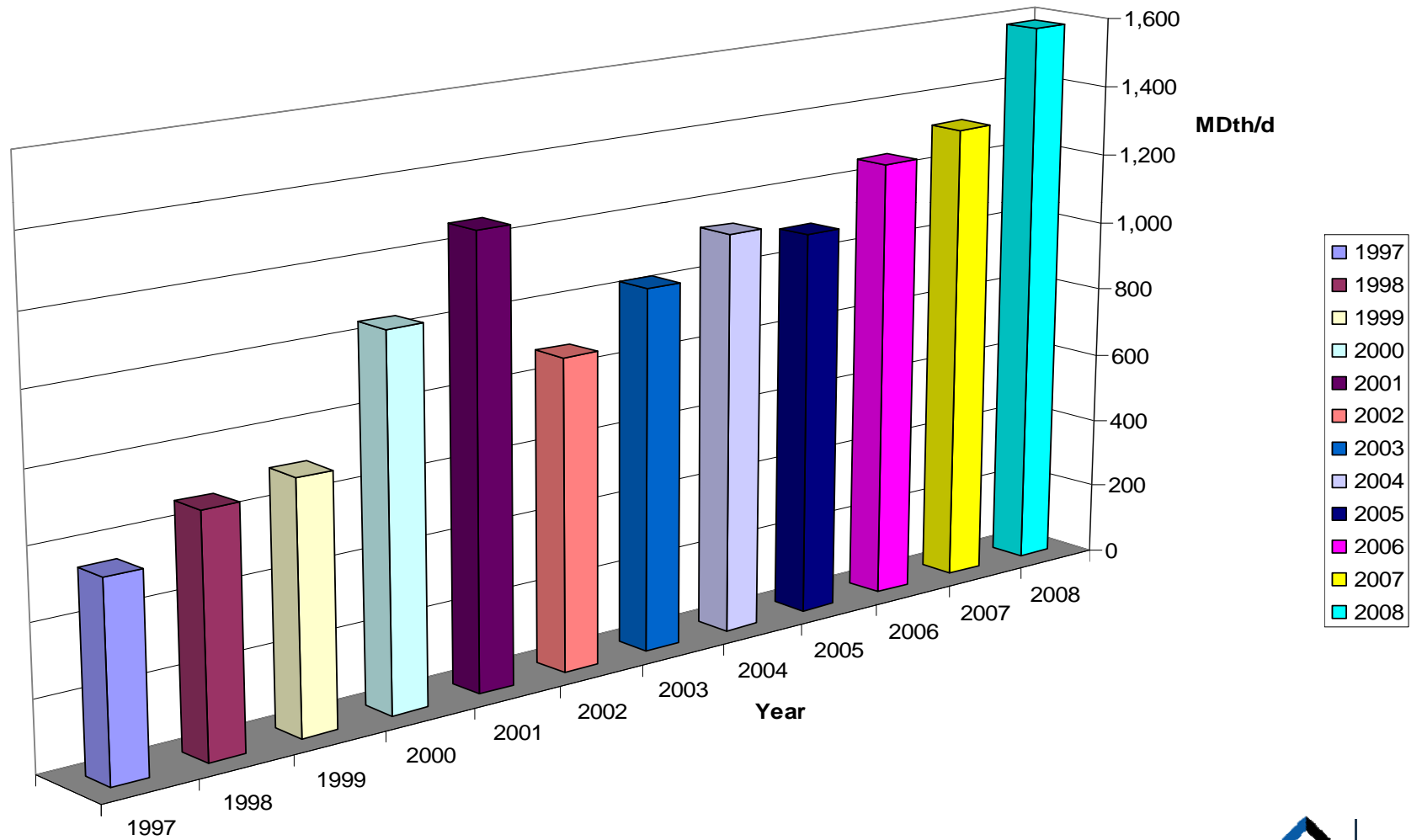
El Paso Natural Gas Company South System Flows by Day



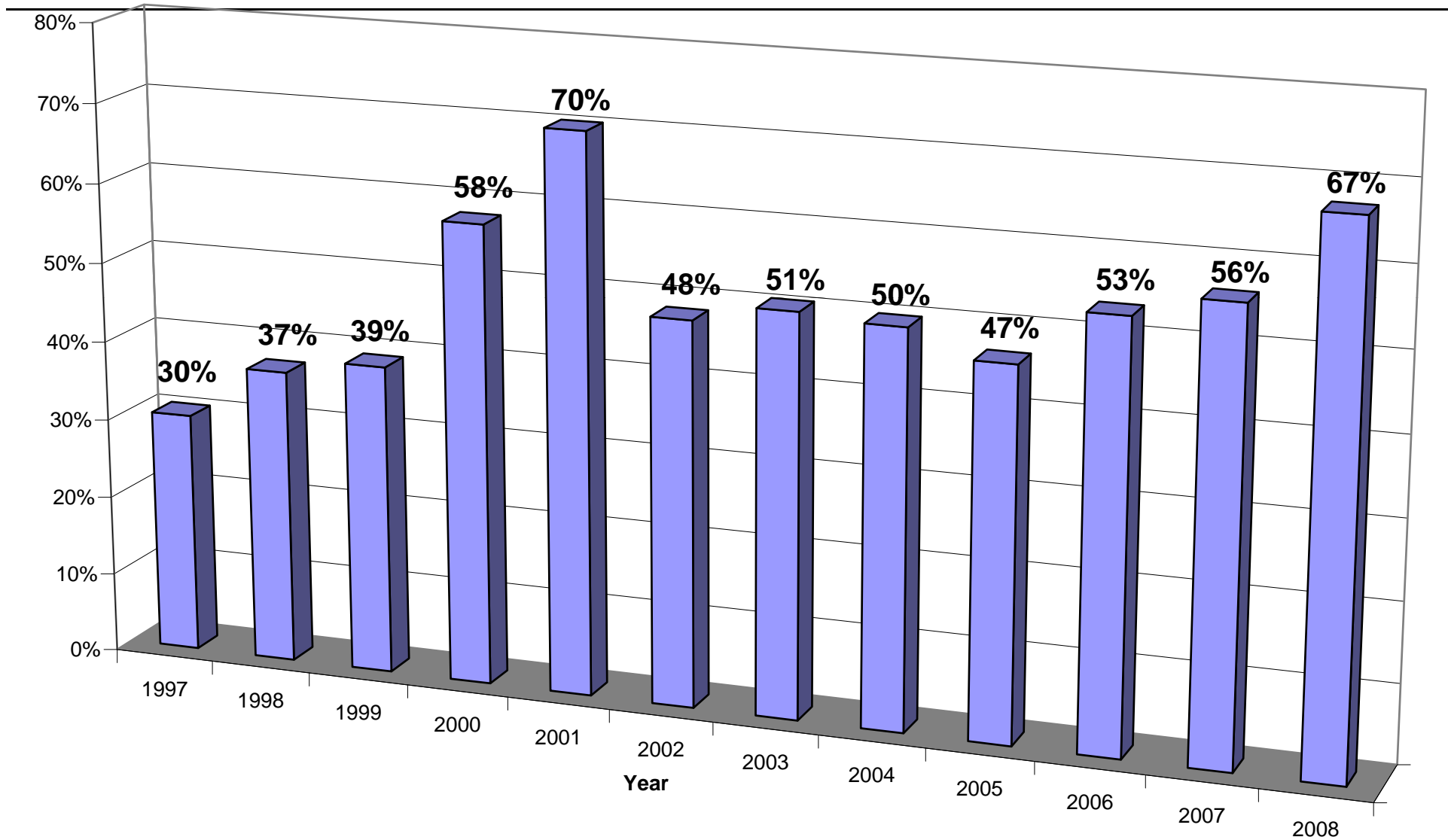
El Paso Natural Gas Company South System Flows by Day 2007 & 2008



El Paso Natural Gas Company South System Flows by Year

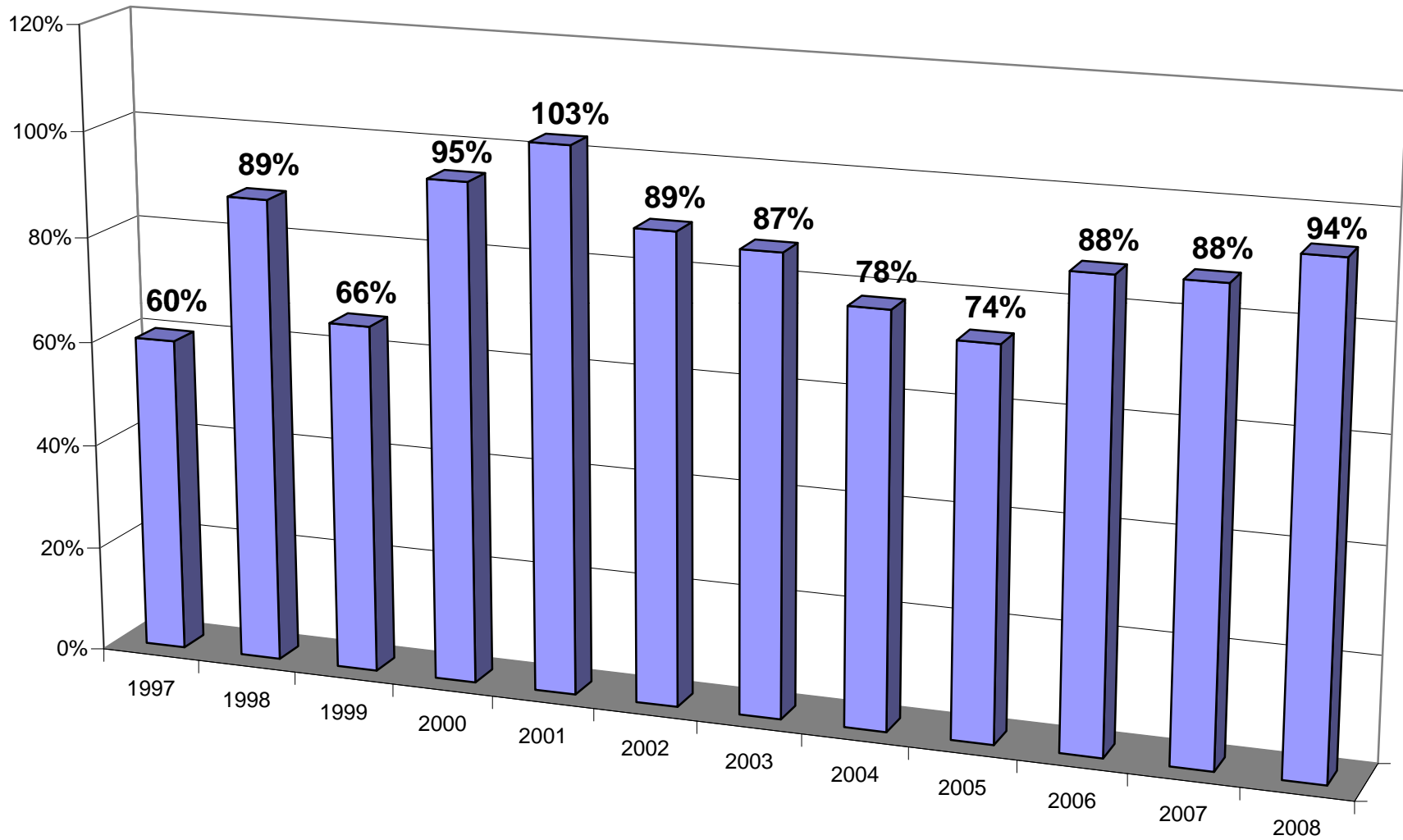


El Paso Natural Gas Company Annual Percentage of Capacity Used South System 1/



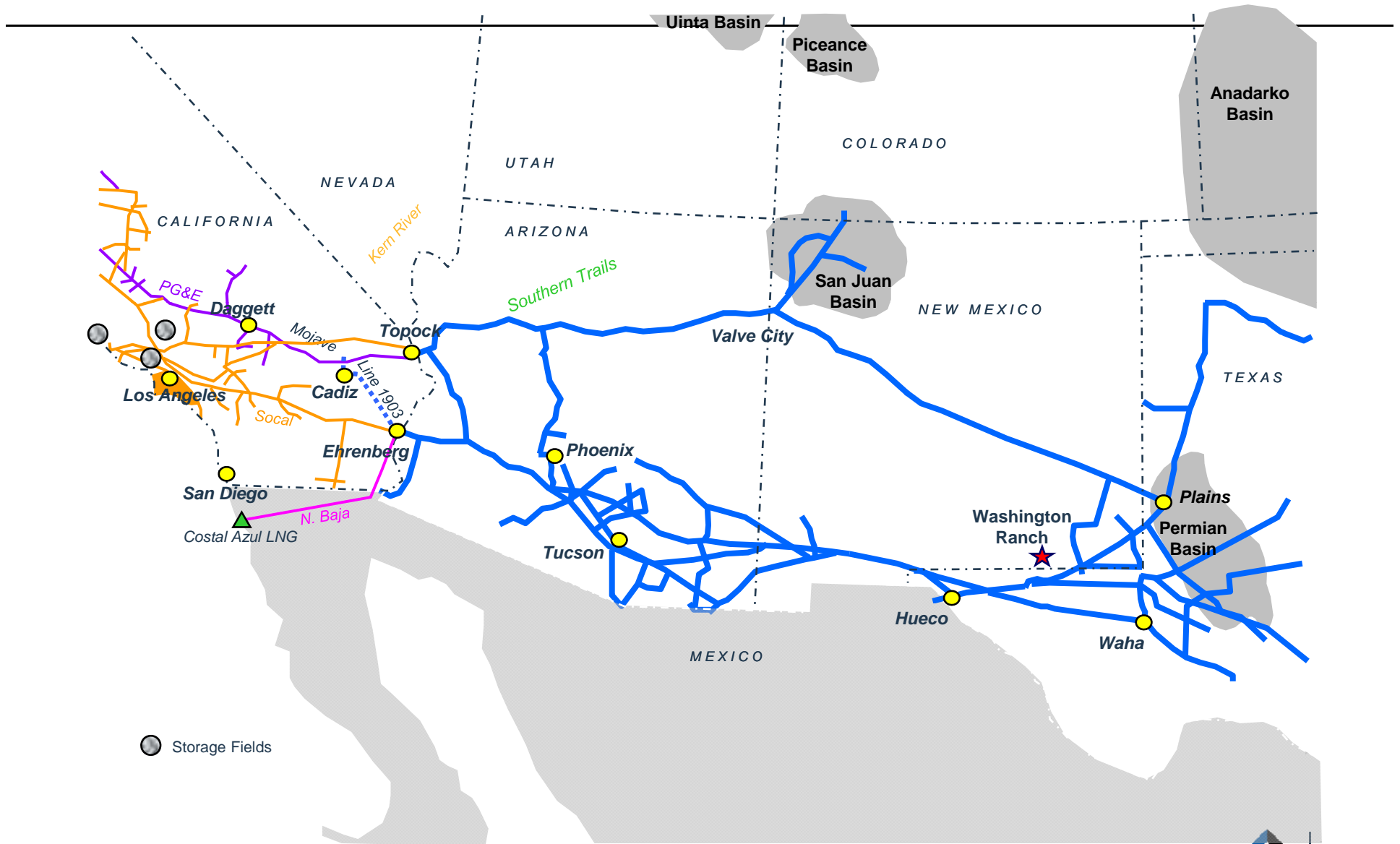
1/ Winter Capacity was used for the entire time period

El Paso Natural Gas Company Peak Day Maximum Capacity Used South System 1/



1/ Winter Capacity was used for the entire time period

EPNG Pipeline System

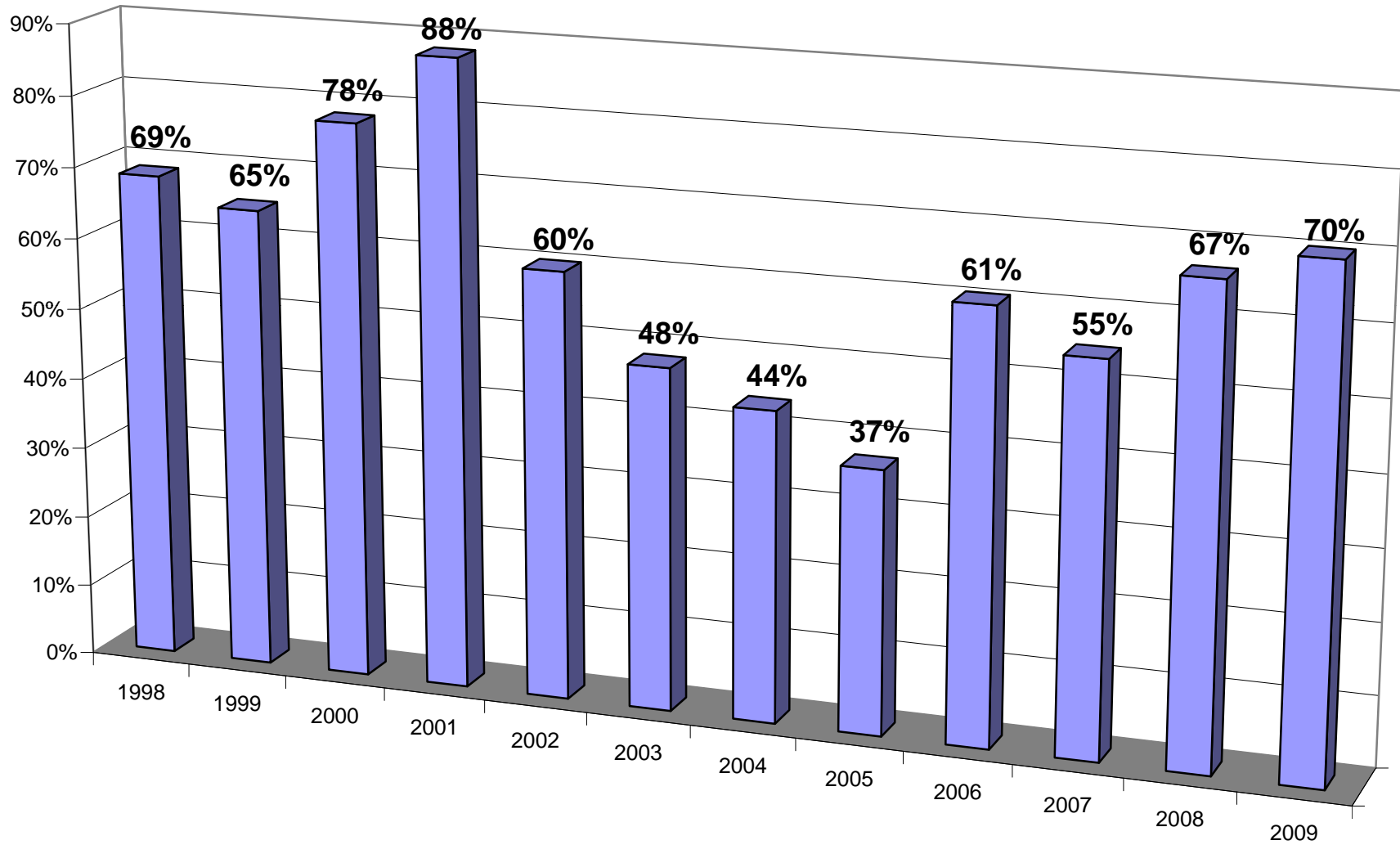


Storage Fields

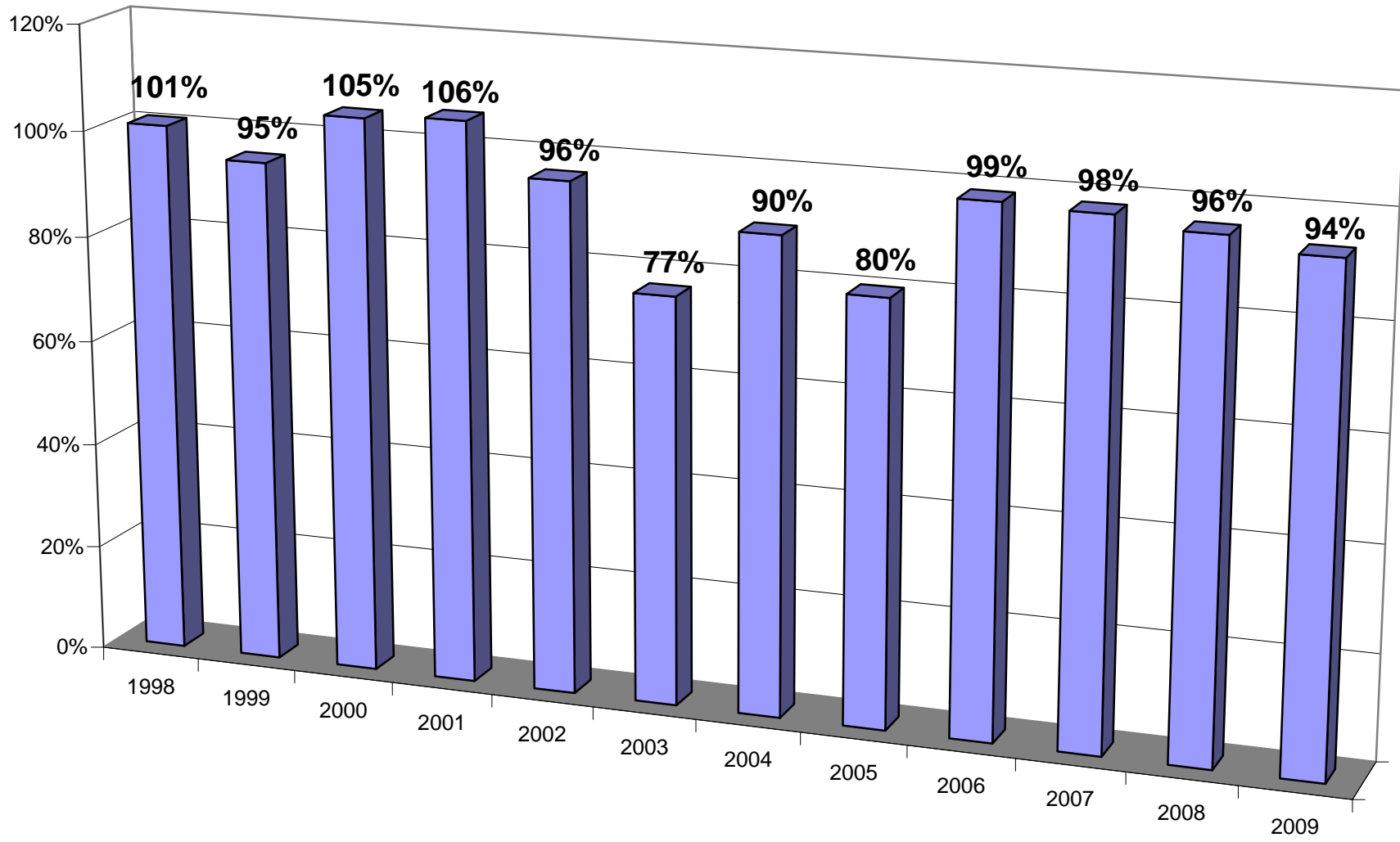
Ehrenberg Contracts

| | 2009 | 2010 | Perc. 2010 |
|---|-----------|-----------|---------------|
| California Companies | 412,605 | 337,880 | 47.75% |
| Producer/Marketer | 425,003 | 425,003 | 49.18% |
| Electric Generation | 26,496 | 26,496 | 3.07% |
| | 864,103 | 789,379 | 100.00% |
| Delivery/Receipt Capacity at Ehrenberg | 1,210,000 | 1,210,000 | |
| Percent Contracted | 71% | 65% | |

El Paso Natural Gas Company Annual Average Day Maximum Capacity Used at Ehrenberg

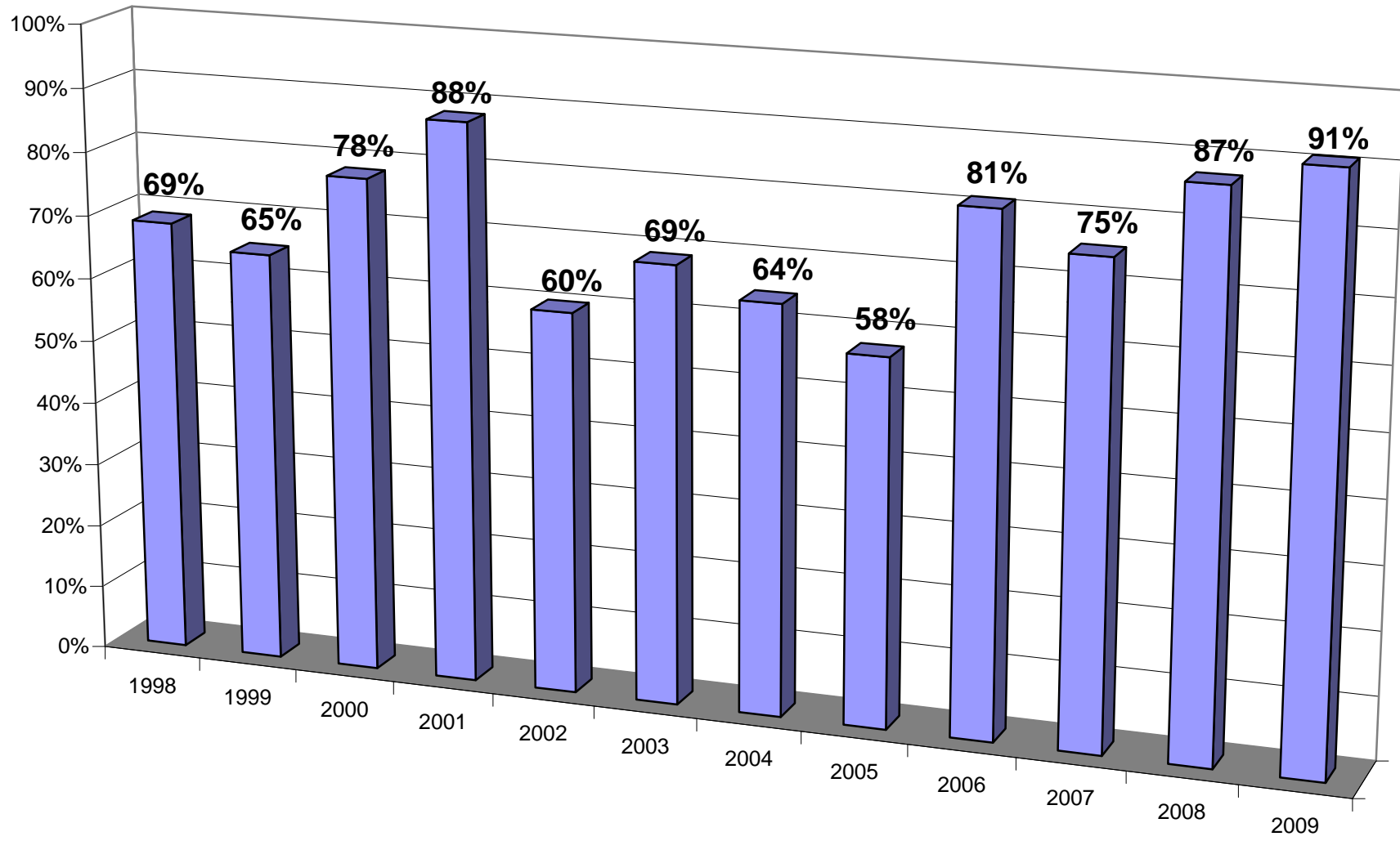


El Paso Natural Gas Company Peak Day Maximum Capacity Used at Ehrenberg



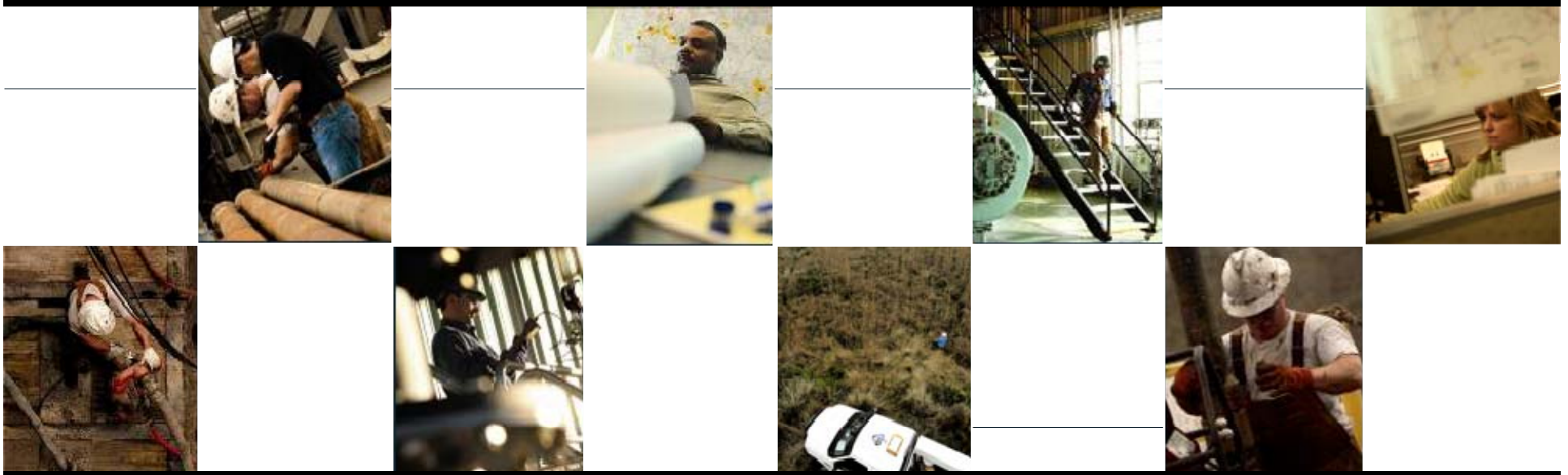
El Paso Natural Gas Company

Annual Average Day Maximum Capacity Used at Ehrenberg + North Baja



Key Points

- ^ The Ehrenberg Capacity Volumes did not include North Baja Capacity
- ^ Capacity is available today
- ^ Firm Contracts Rule



Wayne Tomlinson
El Paso Natural Gas Company
EPNG South System Connectivity

CEC Workshop

Natural Gas Supply under Uncertainty

May 14th, 2009

