



# Edison SmartConnect<sup>™</sup>

CEC AMI Workshop  
May 27, 2008

<b>DOCKET</b> <b>08-DR-1</b>
---------------------------------

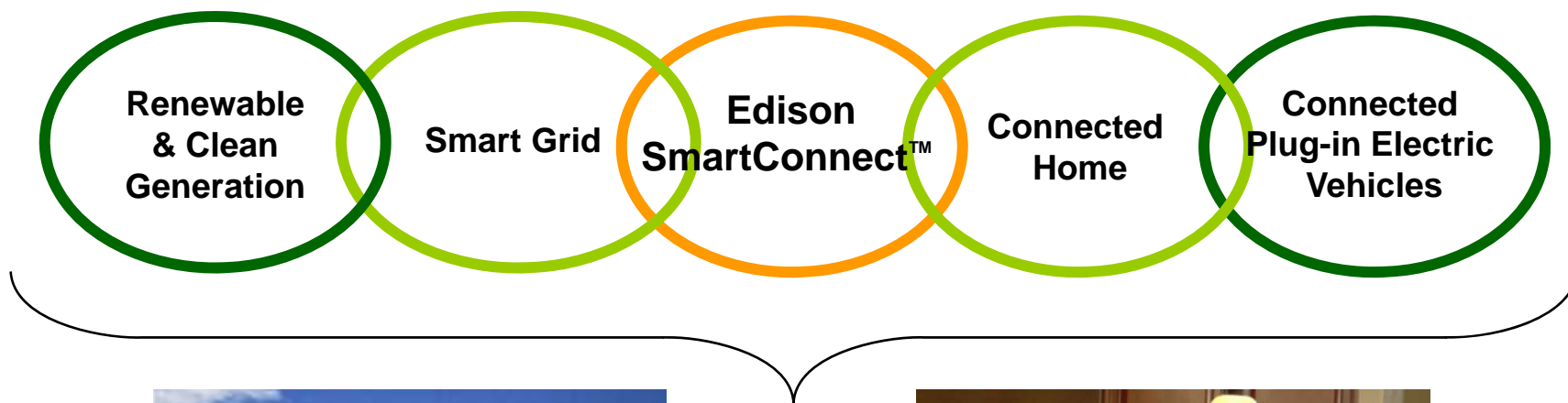
DATE	<u>MAY 27 2008</u>
------	--------------------

RECD.	<u>JUL 25 2008</u>
-------	--------------------

[www.sce.com/smartconnect](http://www.sce.com/smartconnect)

# EIX Vision for Clean Energy Future

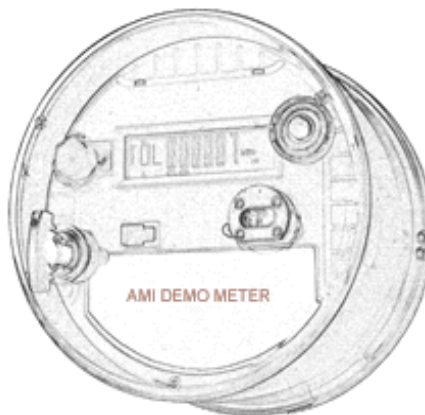
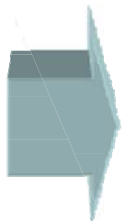
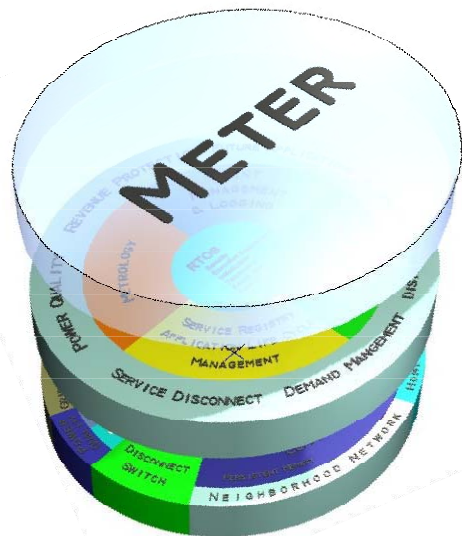
*Integration of Information Technology with Energy Technology Delivers Environmental Benefits*



# Smart Meter Vision to Reality

## SCE's Smart Meter Functionality

- 200A service switch w/load limiting capability
- Remote upgradeability (never visit the meter)
- Flexible tariffs & programs (TOU, CPP, etc)
- Improved computing capability
- Integrated HAN interface (ZigBee)
- Integrated 2-way LAN communication
- Power quality metrics
- Robust Security



# AMI Technology Overview

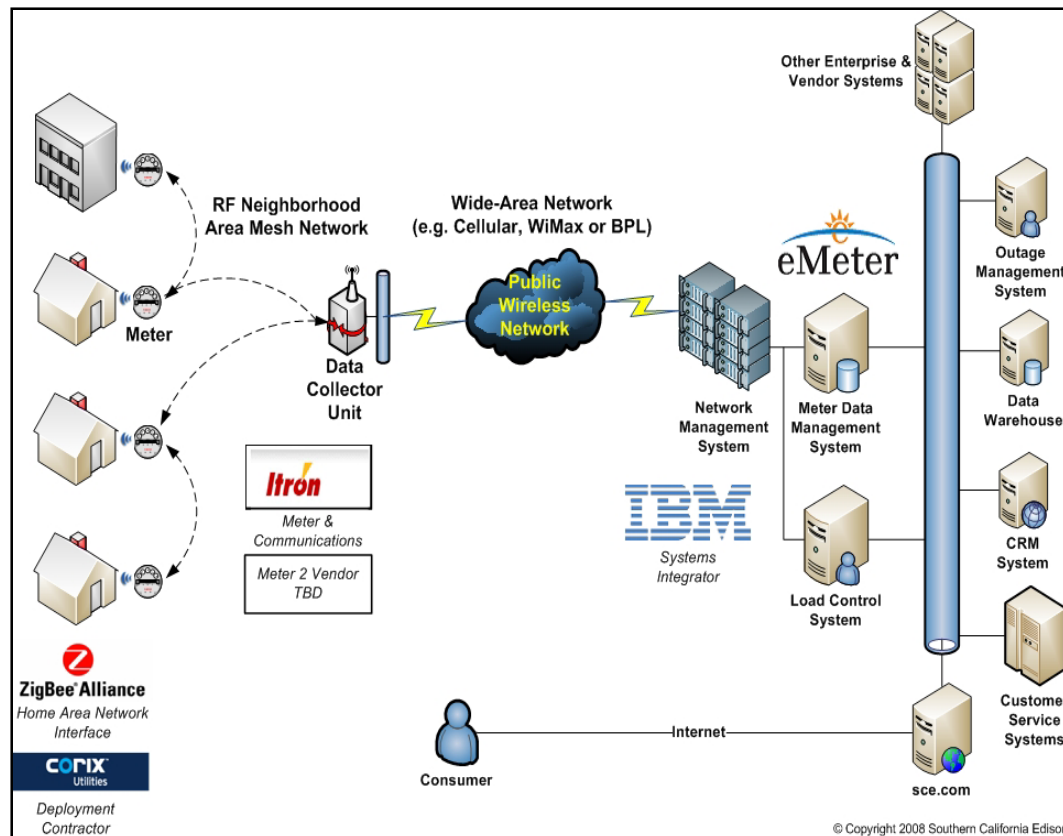
## Technology & Vendor Map

### 3<sup>rd</sup> Gen Electronic meters:

- 200A integrated service switch
- Home Area Network interface
- Energy & Voltage measurement
- Outage detection & service status
- Theft/tamper detection
- Remote firmware upgradability
- Robust security

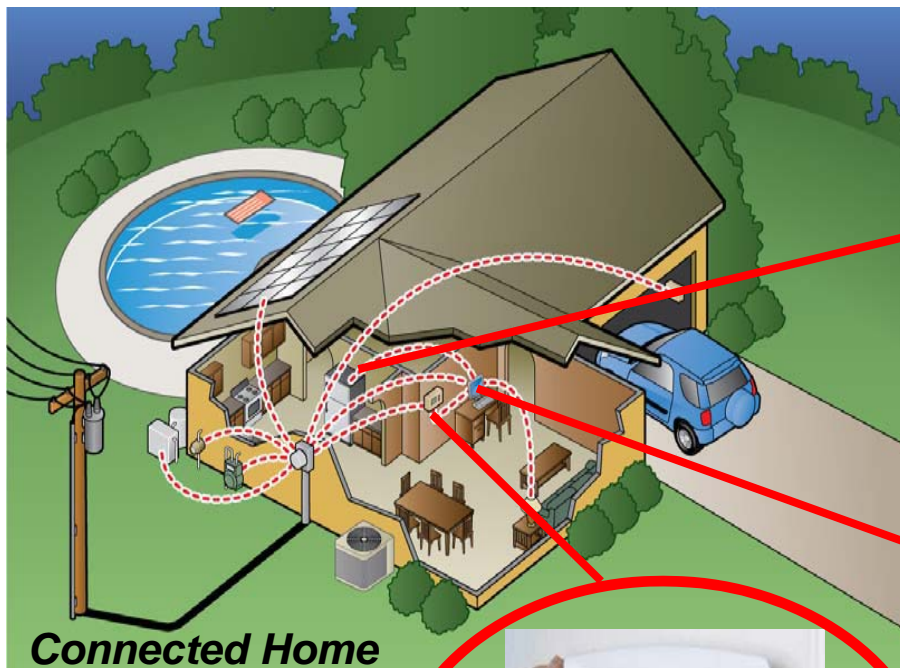
### Multi-Tier Telecom Network

- Designed for flexibility & security
- 2-way narrowband 900MHz RF LAN
- Open standard ZigBee 2.4GHz HAN
- Cellular based WAN with flexibility for technology changes





# Empowering Customer Choice



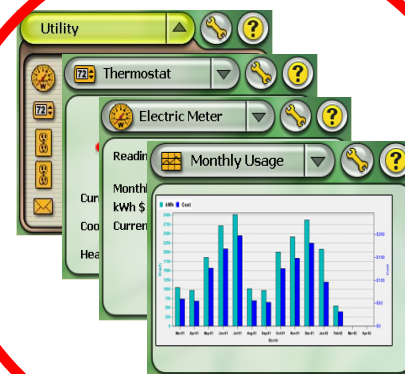
**Improved Load Management through smart thermostats**



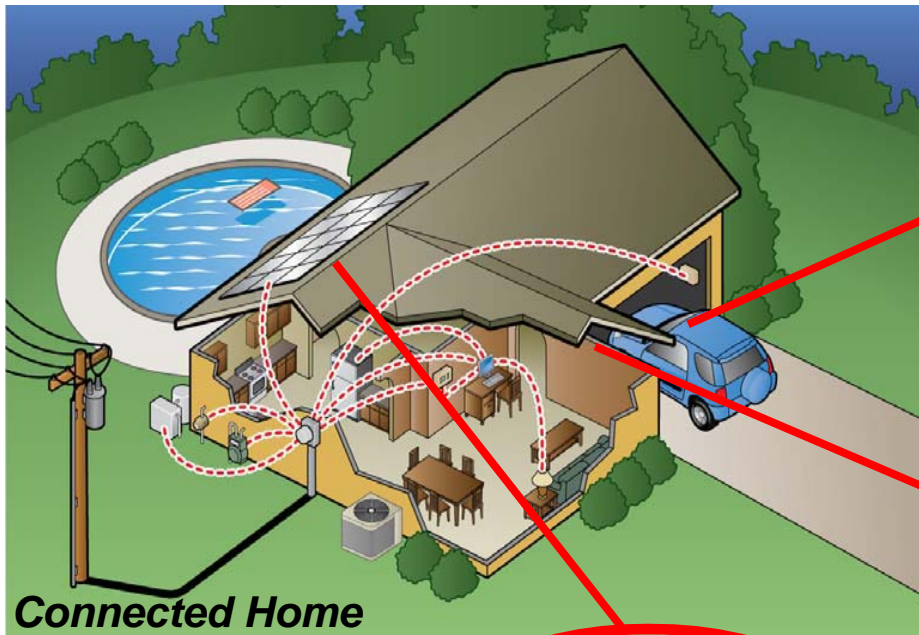
**Customer enabled automated response thru energy smart appliances**



**Energy Information drives Energy Conservation and GHG Reductions**



# Renewables & Energy Storage



**Long-Term Opportunities  
through Plug-in Electric  
Vehicles**

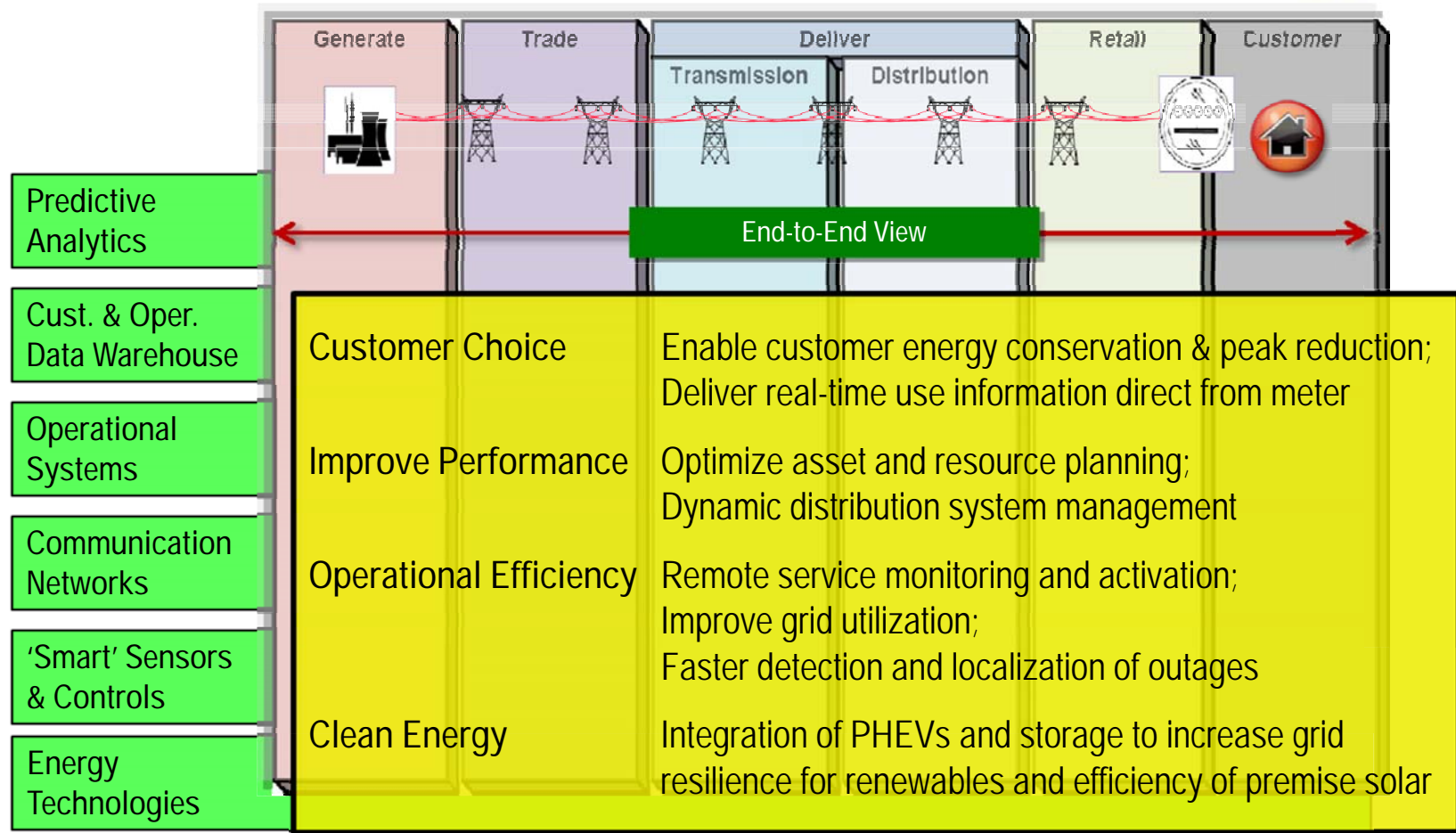
**Enable Net Metering,  
Discrete metering  
and Integrated  
energy management  
w/Solar Panel**



**Customer Home  
Energy Storage  
Creates  
Opportunities for  
Increased  
Renewables**



# SmartGrid/SmartConnect Framework



Framework adapted from FP&L

# 20yr Cost-Benefit Analysis

Based on DRA Settlement\*

'07 PVRR (\$Ms)	
<b>Total Costs</b> <b>\$1,981M</b>	<b>Total Benefits</b> <b>\$2,285M</b>
<b>Total Costs</b>	Net Societal \$295M
	Price Response \$310M
	Load Control \$342M
	Conservation \$164M
	<b>Operations</b> <b>\$1,174M</b>

		(\$ Millions)	
		Nominal	'07 PVRR
<b>Costs</b>			
Phase II Pre-Deployment	\$	(45)	
Acquisition of Meters & Comm Network		(726)	
Installation of Meters & Comm Network		(285)	
Back Office Systems		(251)	
Customer Tariffs, Programs & Services		(117)	
Customer Service Operations		(82)	
Overall Program Management		(45)	
Contingency		(130)	
Post-Deployment		(1,582)	
<b>Total Costs</b>	<b>\$</b>	<b>(3,263)</b>	<b>\$ (1,981)</b>
<b>Benefits</b>			
Meter Services	\$	3,909	
Billing Operations		187	
Call Center		96	
Transmission & Distribution Operations		92	
Demand Response - Price Response		1,044	
Demand Response - Load Control		1,242	
Conservation Effect		828	
Other		39	
<b>Total Benefits</b>	<b>\$</b>	<b>7,437</b>	<b>\$ 1,990</b>
<b>Net Benefits Excluding Societal</b>	<b>\$</b>	<b>4,174</b>	<b>\$ 9</b>
<b>Societal Benefits</b>			<b>295</b>
<b>Net PVRR</b>			<b>\$ 304</b>

\*Settlement is pending CPUC approval



# Deployment Plan

