

DOCKET
07-SPPE-2
DATE _____
RECD. OCT 01 2007

Orange Grove Energy, L.P.

Orange Grove Project

Presentation Outline

ORANGE GROVE ENERGY, L.P.

- Introduction
- Project Overview
- Environmental Review & Permits
- Key Environmental Features

Introduction

ORANGE GROVE ENERGY, L.P.

- Orange Grove Energy, L.P.
- Project purpose and need (RFO)
- Peaking plant design
- Electricity will feed local grid (69 KV)
- Committed measures to minimize impacts
- Project schedule

Project Benefits

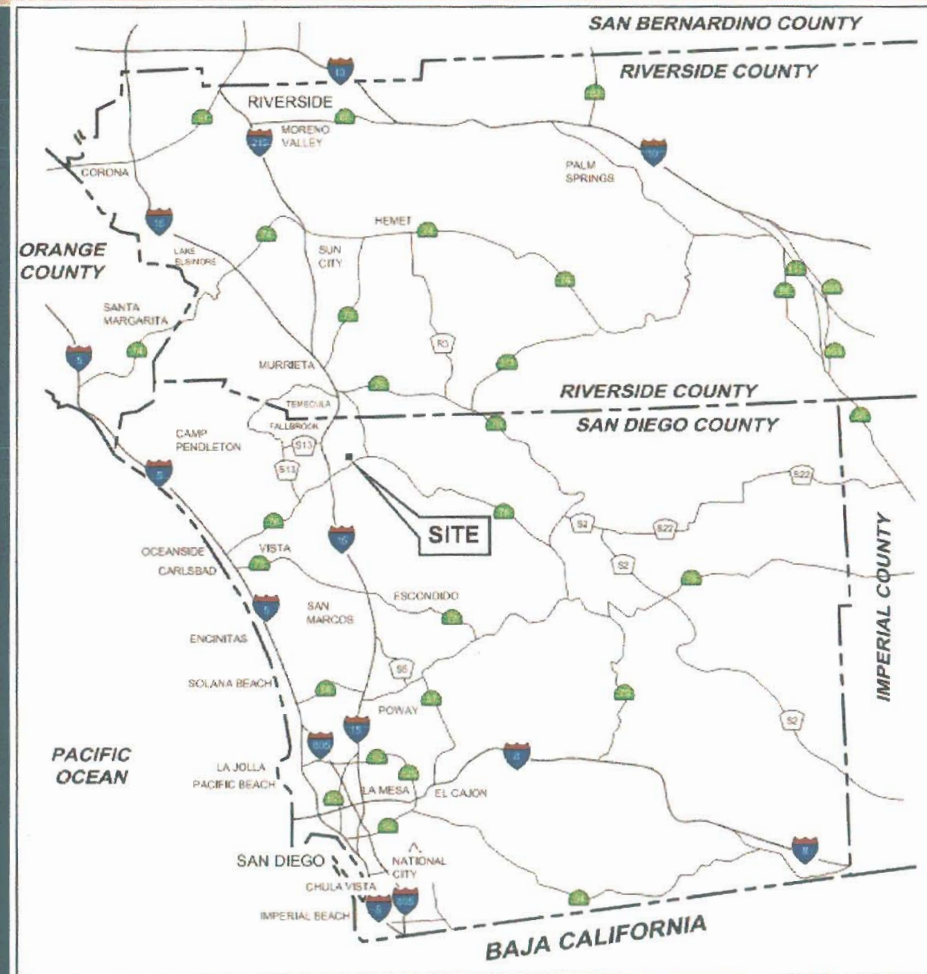
ORANGE GROVE ENERGY, L.P.

- Improve local grid reliability
- \$85 million total increase to local taxable property value
- \$5 million construction payroll
- \$950,000 annual operations payroll
- \$10.8 million in local non-payroll spending
- Indirect “ripple” effect = job, spending and tax benefits
- Net increase in natural habitat

Project Overview

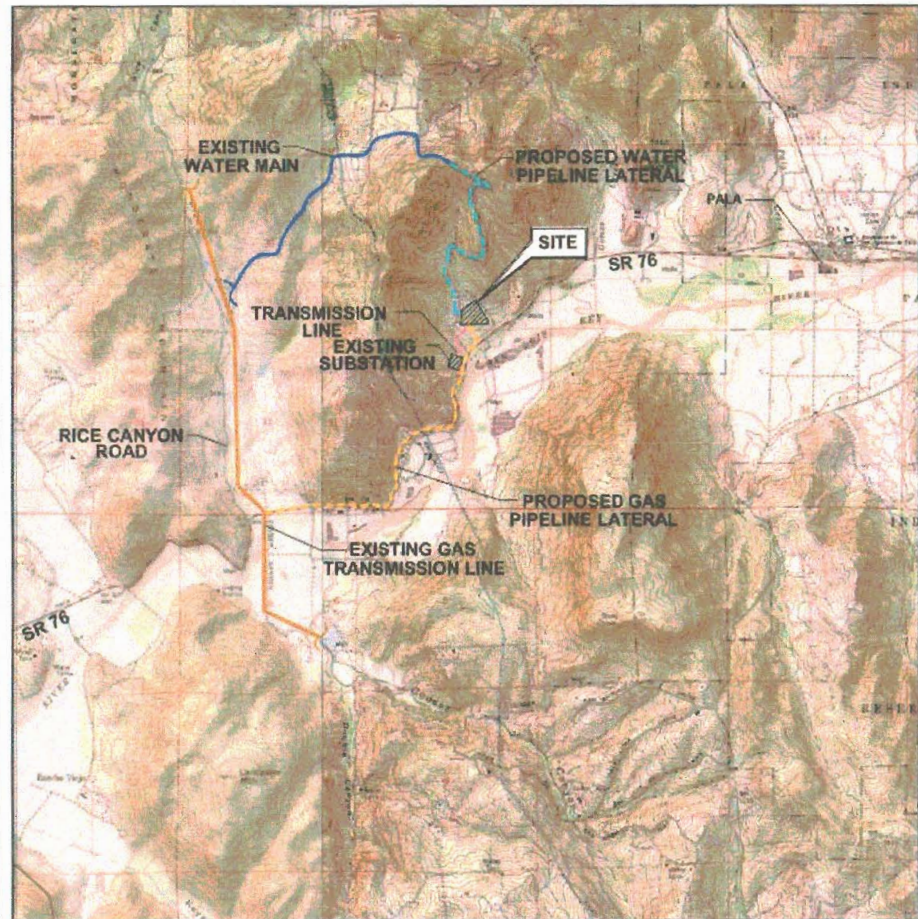
(1 of 11)

ORANGE GROVE ENERGY, L.P.



Project Overview (2 of 11)

ORANGE GROVE ENERGY, L.P.



SOURCE:

United States Geological Survey
7.5 Minute Topographic Map, 2000
Pala, Bonsall, Temecula
and Pechanga Quadrangles

0 1/2 1 1 1/2 2 MILES

SCALE 1:48,000



Project Overview

(3 of 11)

ORANGE GROVE ENERGY, L.P.

- Major Project Components:
 - Net 96 MW Power Plant on 8.5-acre site
 - Two GE LM6000 SPRINT combustion turbine generators
 - Continuous Emissions Monitoring System (CEMS)
 - Best Available Control Technology for Emissions
 - Acoustic enclosures for major equipment
 - Demineralized water treatment system (trailer-mounted)
 - Appx. 0.2 mile transmission line interconnection
 - Appx. 1.5 mile water pipeline (min. 8-inch dia.)
 - Appx. 2.0 mile natural gas pipeline (10-inch dia.)

Project Overview

(4 of 11)

ORANGE GROVE ENERGY, L.P.

- Transmission Line Interconnection:
 - Underground transmission cable
 - Interconnection to existing PG&E Pala substation
 - Located on disturbed lands - No disturbance to natural habitat
 - Horizontal directional boring beneath normally dry drainage to avoid impact to drainage

Project Overview

(5 of 11)

ORANGE GROVE ENERGY, L.P.

- Water Supply:
 - Underground pipeline
 - Connection to Rainbow Water District water main
 - Constructed in Pala Del Norte Road shoulder
 - No disturbance to natural habitat
 - 540,000 gallon raw water/fire water storage tank onsite

Project Overview

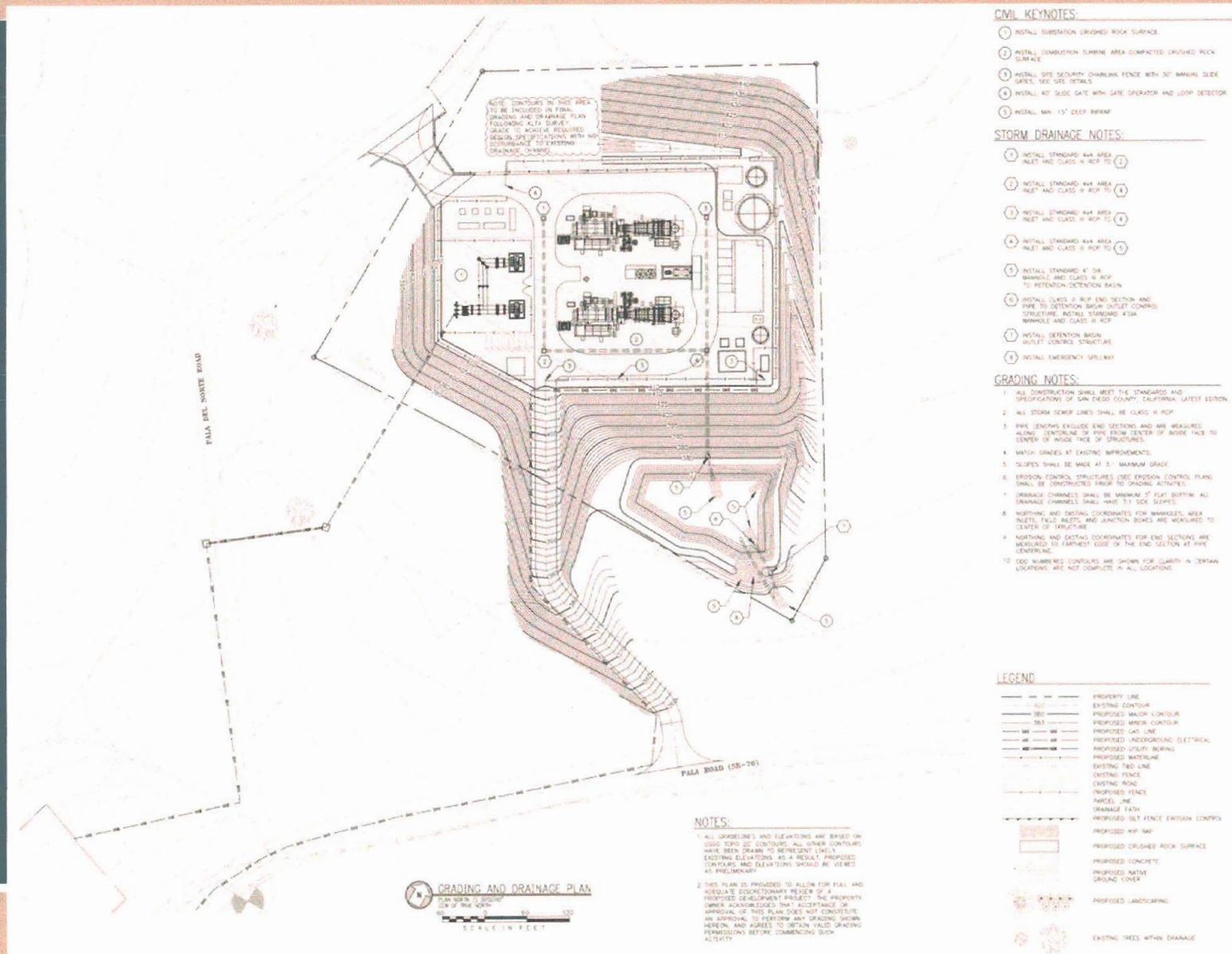
(6 of 11)

ORANGE GROVE ENERGY, L.P.

- Natural Gas Pipeline:
 - Underground pipeline (10-inch diameter)
 - Connection to existing SDG&E gas transmission line
 - Route to follow State Route 76
 - No disturbance to natural habitat
 - Pipeline to be constructed and operated by SDG&E

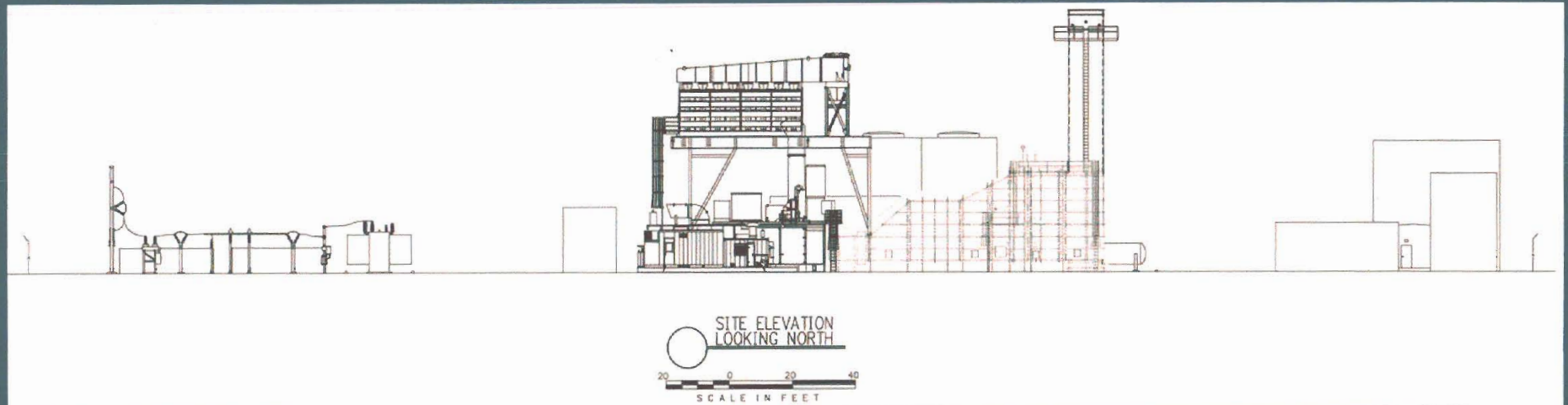
Project Overview (7 of 11)

ORANGE GROVE ENERGY, L.P.



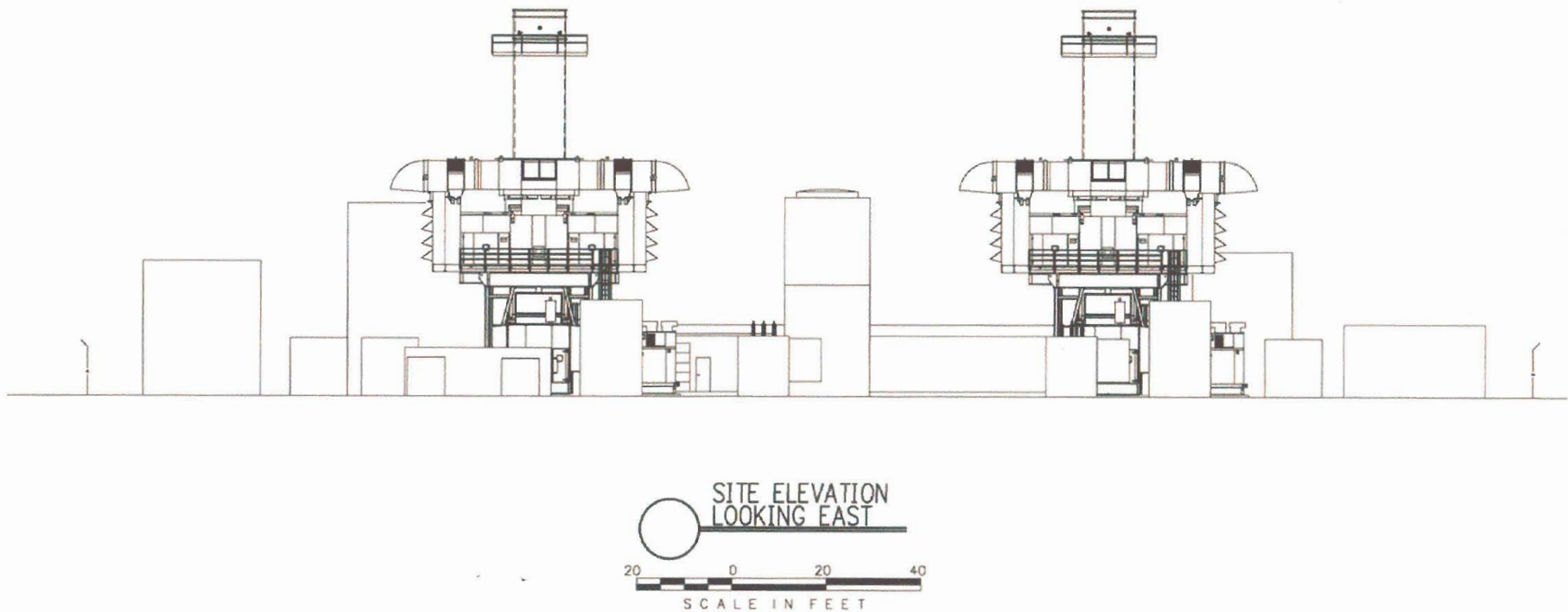
Project Overview (8 of 11)

ORANGE GROVE ENERGY, L.P.



Project Overview (9 of 11)

ORANGE GROVE ENERGY, L.P.



Project Overview (10 of 11)

ORANGE GROVE ENERGY, L.P.



Project Overview (11 of 11)

ORANGE GROVE ENERGY, L.P.



Environmental Review & Permitting (1 of 3)

ORANGE GROVE ENERGY, L.P.

- CEQA Lead Agency is California Energy Commission
- SPPE process is proposed
- CEC Environmental Impact Review

Environmental Review & Permitting (2 of 3)

ORANGE GROVE ENERGY, L.P.

- Air quality
- Geologic hazards/resources
- Agriculture
- Soils
- Water resources
- Biological resources
- Cultural resources
- Paleontology
- Land Use
- Socioeconomics
- Transportation
- Noise
- Visual impact
- Waste management
- Hazardous materials
- Public health
- Worker safety
- Transmission system impacts

Environmental Review & Permitting (3 of 3)

ORANGE GROVE ENERGY, L.P.

- Key Permits/Environmental Documents:
 - SPPE Application/Mitigated Negative Declaration (CEC)
 - Major Use Permit (County)
 - Authority to Construct/Permits to Operate (APCD)
 - Construction storm water NPDES permit (SWRCB)
 - Streambed Alteration Agreement (DFG)
 - Encroachment Permits (Caltrans)
 - Various ministerial permits/approvals (e.g., building and grading permits)

Key Environmental Features (1 of 5)

ORANGE GROVE ENERGY, L.P.

- Air Quality:
 - Clean-burning natural gas fuel
 - BACT to limit emissions
 - Continuous Emissions Monitoring Systems
- Water Resources:
 - Designed to avoid disturbance to drainages
 - No discharge of process water
 - Storm water retained onsite for 50-year storm
 - Project will not use ground water

Key Environmental Features (2 of 5)

ORANGE GROVE ENERGY, L.P.

- Biological Resources:
 - Site is a former orange grove
 - De minimis disturbance to natural habitat (< 1 acre)
 - No Threatened or Endangered species onsite
 - Water and gas pipelines located along existing roads
 - Electric transmission line located in disturbed area
 - Construction laydown area will be reclaimed with Coastal sage scrub (net gain)
 - Only native species will be planted

Key Environmental Features (3 of 5)

ORANGE GROVE ENERGY, L.P.



Key Environmental Features (4 of 5)

ORANGE GROVE ENERGY, L.P.

- Land Use:
 - Minimum site size (8.5 acres)
 - Use is consistent with current zoning
- Transportation:
 - Negligible operations traffic (up to 4 employees/shift)
 - Average 65 construction vehicles per day (6 months)
- Socioeconomics:
 - \$85 million capital investment will contribute to tax base
 - Minimal demand on infrastructure and public services

Key Environmental Features (5 of 5)

ORANGE GROVE ENERGY, L.P.

- Noise Control:
 - Acoustic enclosures on major equipment
 - Operations typically in daytime hours
 - Will conform with all relevant County standards
- Visual Resources:
 - Site is hidden from view by surrounding topography
 - Few opportunities for view
 - Finishes will be selected to blend with landscape
 - Native oaks and shrubs to be used for screening

Project Benefits

ORANGE GROVE ENERGY, L.P.

- Improve local grid reliability
- \$85 million total increase to local taxable property value
- \$5 million construction payroll
- \$950,000 annual operations payroll
- \$10.8 million in local non-payroll spending
- Indirect “ripple” effect = job, spending and tax benefits
- Net increase in natural habitat