



ROSEVILLE ELECTRIC  
RELIABLE ENERGY • DEPENDABLE SERVICE

# Electric Dispatch

## New Rate Structure Encourages Energy-Saving Measures

The tiered-rate structure appearing on this month's electricity bills may delight you with a lower-than-expected bill. But when summer bears down and our air conditioners crank up, you might need to pay attention to how much electricity you use to prevent your rates from shifting unfavorably.

### Tiered-rate refresher

Roseville Electric has shifted our residential rate structure to encourage conservation by returning to a tiered rate. The new tiered-rate is 7.5 cents for the first 500 kWh used (Tier 1), almost a penny less than the former flat rate of 8.41 cents per kWh. Monthly electricity usage above 500 kWh is 10 cents per kWh. We're proud to say that we still have some of the lowest rates in the state.

### Lock in low rates by lowering use

Roseville Electric has several programs in place to help you conserve. We encourage you to take advantage of them before the heat of summer strikes.

#### • RE-View™ Online Energy and Water Audit



This handy online tool is an excellent place to start. It only takes about 20-30 minutes to answer the questions and the audit provides you with a detailed report covering current use and suggested measures you can take to reduce consumption. Visit [www.RosevilleElectric.org](http://www.RosevilleElectric.org)—go to the Residents section, then to Energy Efficiency Services, then to Energy Audit Services.

#### • Roseville Shade Tree Program



One of our most popular programs, the Shade Tree Program, provides residents with up to three shade trees—at no charge. Once you attend a community meeting, program staff or trained volunteers will come to your home and determine placement to deliver maximum shade. You'll attend a tree planting demonstration and then receive your trees for planting. Visit [www.RosevilleElectric.org](http://www.RosevilleElectric.org) click on the large Shade Tree Program button on our home page. You can also call 774-5647 or e-mail [shadetree@roseville.ca.us](mailto:shadetree@roseville.ca.us) to find out where and when community meetings will be held.

#### • Residential Rebate Program



Many times, the way a home is constructed or the materials used create energy inefficiency. In addition, older air conditioning systems, pool pumps and motors, and appliances can gobble up electricity and drive usage up in spite of your best efforts. We've identified the best-rated building materials, systems and appliances to reduce consumption and created generous rebates to help offset your cost to upgrade. Rebate funds are limited, so please call our 24-hour rebate information line (774-5110) to ensure funds are available for the measure you're considering. Rebate applications will be accepted on a first-come, first-served basis. Application packets must be submitted within 30 days of your purchase. Visit [www.RosevilleElectric.org](http://www.RosevilleElectric.org)—go to the Residents section, then to Energy Efficiency Services, then to Residential Rebates.

#### • Energy Saving Tips and Advice



Our web site also contains many useful tips on ways to save energy. You can find them by going to [www.RosevilleElectric.org](http://www.RosevilleElectric.org). Put your mouse over the Residents section, then move down and click on Energy Saving Tips. If you have a specific question about saving energy or about energy saving products, please feel free to contact us at 79-POWER (797-6937).

*Remember, with tiered rates, the more energy you save, the more money you save. Count on us to help you keep your energy bills low.*

## SUMMER Energy-Saving Tips

Here are a few energy-smart ideas to help you save electricity this summer. You'll find more tips on our web site at [www.RosevilleElectric.org](http://www.RosevilleElectric.org).

- Set your thermostat to at least 78°, 84° on the very hottest days (over 100°). Use room fans to increase comfort.
- Replace or clean air conditioner filters monthly and shade the condenser to increase its efficiency. Be careful not to restrict air flow to the condenser unit.
- Keep summer heat out of your home by repairing leaks and replacing worn out weather stripping and caulking.
- Use your dishwasher, clothes dryer, and other heat-producing appliances in the morning or after 8 p.m.—not during the hottest part of the day.
- Close drapes, blinds, and shades to keep out the sun's warming rays.
- Reduce pool filtering and sweeping to the lowest effective time period, approximately five to six hours for filtering and two hours for sweeping, or check your operating manual. Set equipment timers to avoid use from noon to 8 p.m.

Choose GREEN  
today and for a  
GREENER future.

By choosing to buy part or all of your energy from green, or renewable sources, you reduce the use of finite natural resources, and preserve the Earth for our children and grandchildren. And since we match your contribution dollar for dollar, the more green you buy, the more we can purchase.

Find out more by visiting the  
Green Energy Program  
pages on our web site at  
[www.RosevilleElectric.org](http://www.RosevilleElectric.org).





## BEN'S CORNER

### Energy Source Crossword

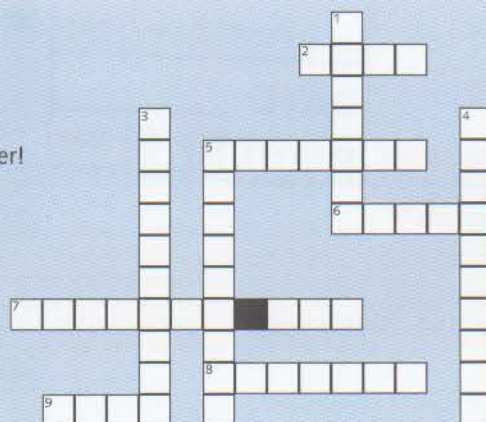
Have some fun and test your knowledge of where we get our power!

#### ACROSS

2. The energy of moving air.
5. The portable gas.
6. Energy from the sun.
7. Gas moved in pipelines.
8. An atom of this element can split.
9. Black solid fossil fuel.

#### DOWN

1. The energy in waste and wood.
3. Heat energy from inside the earth.
4. The energy in flowing water.
5. Liquid fossil fuel.



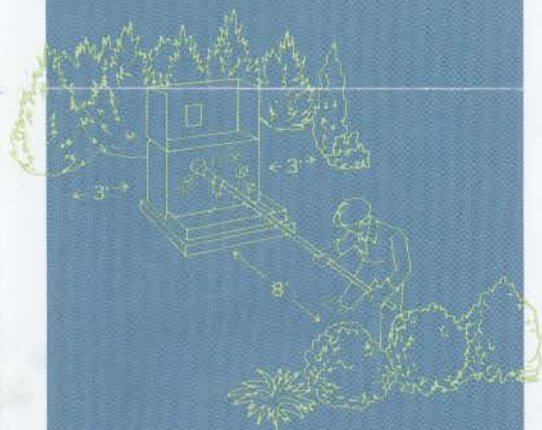
To check your answers—visit [www.RosevilleElectric.org](http://www.RosevilleElectric.org), go to News & Information, Newsletters, May 2004

For more energy activities, visit [www.NEED.org](http://www.NEED.org)

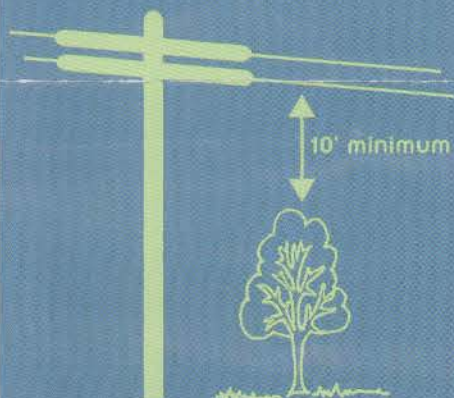
The NEED Project, 8408 Kao Circle, Manassas, Virginia 20110; phone: 703-257-1117; fax: 703-257-0037; [info@need.org](mailto:info@need.org); © Copyright 2003 National Energy Education Development Project. All rights reserved.

## Please Don't Hide Our Equipment!

We're the first to admit that our power lines and green utility enclosures are not as attractive as trees, shrubs and flowers, but they serve a very important purpose. In the event of a power outage or other emergency, our crews need immediate access to the equipment. By taking care of problems quickly, we're able to maintain exceptionally high reliability standards and minimize the amount of time any customer is without power. By giving us room to work, you're helping to keep power flowing in our community.



Our crews gain access to underground power lines through the green utility boxes placed throughout newer neighborhoods. To ensure easy access, Roseville Municipal Code requires eight feet of clearance in front of the utility enclosure door and three feet from all other sides.



If you notice tree branches growing too close to our high voltage power lines, please call us. Don't try to take care of the problem yourself. We'll send a tree trimming crew out—at no charge. Tree trimming for high voltage power line clearance is a free service of Roseville Electric.

**Call 79-POWER (797-6937)**

## UPDATE • Roseville Energy Park

The California Energy Commission kicked off its formal review of the Roseville Energy Park on January 28, 2004 when it conducted a site visit and informational hearing at the Woodcreek Golf Course clubhouse in Roseville. The primary purpose of the hearing was to introduce the public to the proposed power plant project and discuss the CEC's 12-month certification review schedule and other issues of concern. The meeting was well attended by CEC staff, Roseville Electric representatives, congressional representatives, local regulatory agencies, and members of the general public.

As part of the CEC's licensing process, CEC staff must prepare its own independent engineering and environmental analysis of the Roseville Energy Park. This "discovery and analysis" phase of the review process began in early January when CEC staff issued its first set of data requests to Roseville Electric. This data request process continued into March and the information provided by Roseville Electric was used by the CEC staff to prepare its Preliminary Staff Assessment, which is expected to be published in May (the CEC's current Scheduling Order for the project can be found at [http://www.energy.ca.gov/sitingcases/roseville/notices/2004-02-03\\_schedulingorder.html](http://www.energy.ca.gov/sitingcases/roseville/notices/2004-02-03_schedulingorder.html)).

Roseville Electric, the public, and other regulatory agencies will have an opportunity to comment on this document. Following close of the public comment period, the CEC staff will issue its Final Staff Assessment in July 2004, if the schedule proceeds as planned. At that point, the project will move into the evidentiary hearing phase of the licensing review process.

If you are interested in learning more about the Roseville Energy Park, please call 797-6937.

## Roseville Electric's First Quarter of 2004 Annual Projection

### POWER CONTENT LABEL

ENERGY RESOURCES	RE Total System (projected)	RE Green 50* (projected)	RE Green 100* (projected)	2002 CA POWER MIX** (for comparison)
Eligible Renewable	10%	55%	100%	9%
Biomass and waste	1%	1%	0%	3%
Geothermal	6%	45%	84%	4%
Small hydroelectric	2%	9%	16%	2%
Solar	0%	0%	0%	<1%
Wind	<1%	<1%	0%	1%
Coal	8%	4%	0%	15%
Large Hydroelectric	52%	26%	0%	23%
Natural Gas	25%	13%	0%	42%
Nuclear	5%	3%	0%	11%
Other	0%	0%	0%	0%
<b>TOTAL</b>	<b>100%</b>	<b>100%</b>	<b>100%</b>	<b>100%</b>

\* 75% of RE Green 50 and 100% of RE Green 100 is specifically purchased from individual suppliers. 50% of RE Total System Mix is specifically purchased from individual suppliers.

\*\* Percentages are estimated annually by the California Energy Commission based on the electricity sold to California consumers during the previous year.

For specific information about this electricity product, contact Roseville Electric. For general information about the Power Content Label, contact the California Energy Commission at 1-800-555-7794 or [www.energy.ca.gov/consumer](http://www.energy.ca.gov/consumer).

Roseville Electric is pleased to comply with the Public Utility Commission Section 398.1(b) which requires retail suppliers of electricity to disclose fuel source information about the electricity being sold to consumers.

ELECTRIC DISPATCH is published for Roseville's residents by Roseville Electric. ©2004. Comments and suggestions are welcome—please send to the attention of Bev Van Arkel.

2090 Hilltop Circle, Roseville, CA 95747-9704  
916/ 797-6937 • 916/ 774-5220 TDD  
916/ 774-5428 24-HR OUTAGE HOTLINE

Find us on the web—[www.RosevilleElectric.org](http://www.RosevilleElectric.org)



Your City Electric Utility

3.04.36 RECYCLED PAPER