

**DOCKETED**

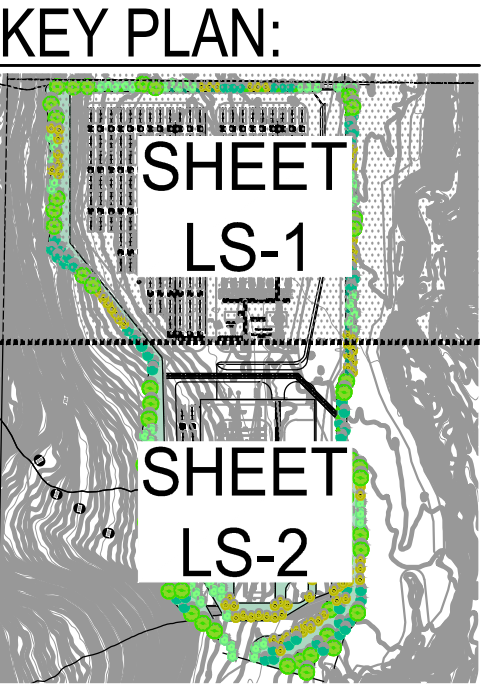
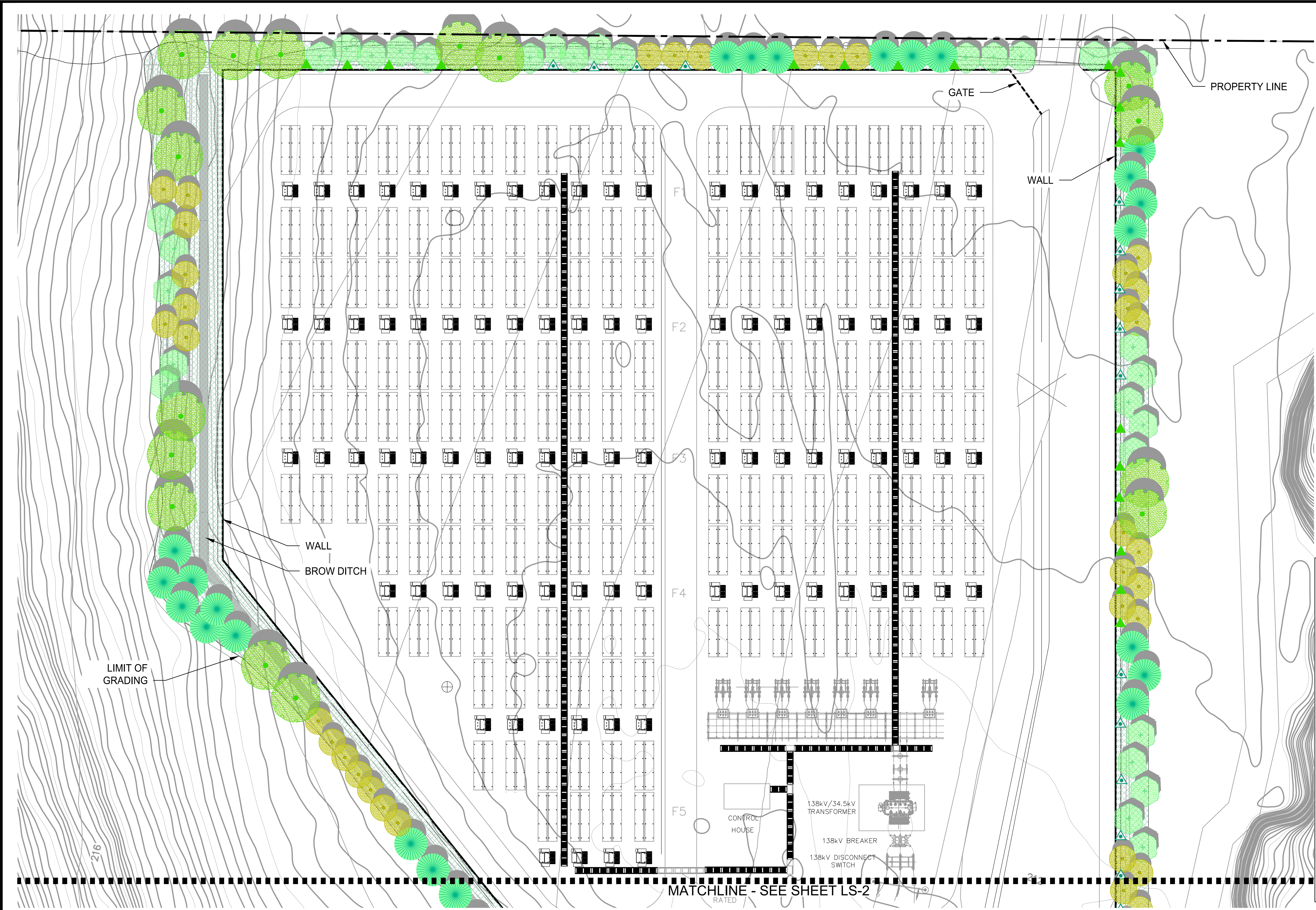
<b>Docket Number:</b>	24-OPT-02
<b>Project Title:</b>	Compass Battery Energy Storage
<b>TN #:</b>	255582
<b>Document Title:</b>	Appendix 2B_Conceptual Landscape Plan
<b>Description:</b>	N/A
<b>Filer:</b>	Erin Phillips
<b>Organization:</b>	Dudek
<b>Submitter Role:</b>	Applicant Consultant
<b>Submission Date:</b>	4/8/2024 4:30:51 PM
<b>Docketed Date:</b>	4/8/2024

---

## **Appendix 2B**

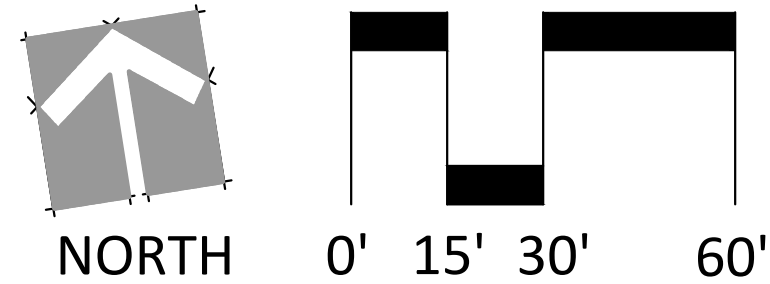
### Landscape Plan





PLANT KEY:

BOTANICAL NAME	SYMBOL
<b>TREES:</b>	
LYONOTHAMNUS FLORIBUNDUS	
METROSIDEROS EXCELSUS	
QUERCUS AGRIFOLIA	
RHUS LANCEA	
SHRUBS & GROUNDCOVERS	
VINES	



**PLANTING PLAN - NORTH**

SEE SHEET LS-3 FOR PLANT LEGEND, AND PLANTING AND IRRIGATION NOTES.  
SEE SHEET LS-4 FOR DETAILS AND LS-5 FOR REPRESENTATIVE TREE IMAGES.

MARCH 19, 2024

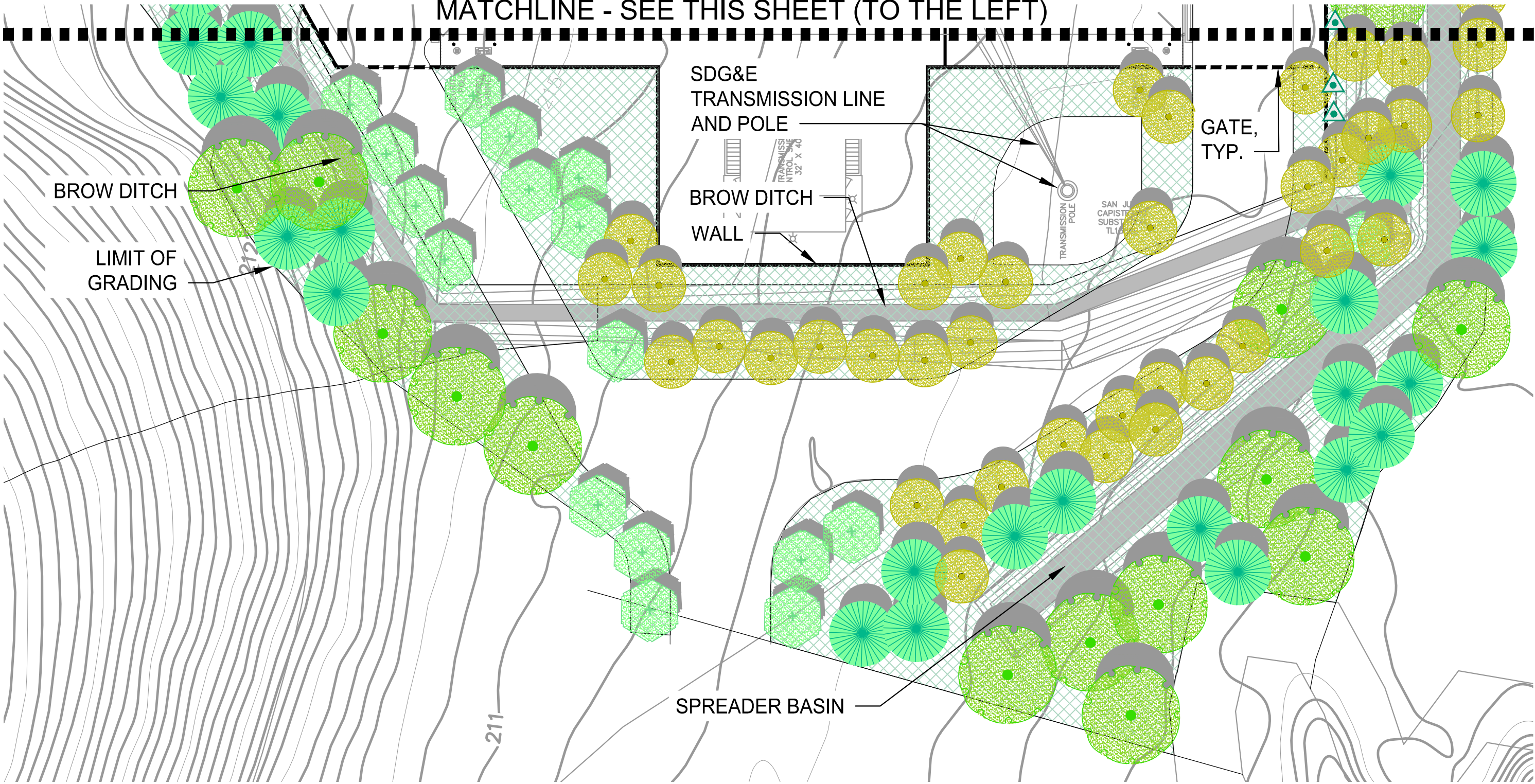
**DUDEK**  
605 3RD STREET, ENCINITAS, CA 92024  
760.942.5147

**PRELIMINARY LANDSCAPE PLAN  
COMPASS ENERGY  
STORAGE PROJECT**

FOR BROAD REACH POWER

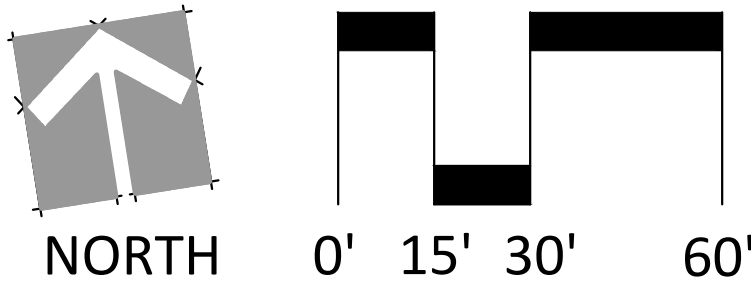
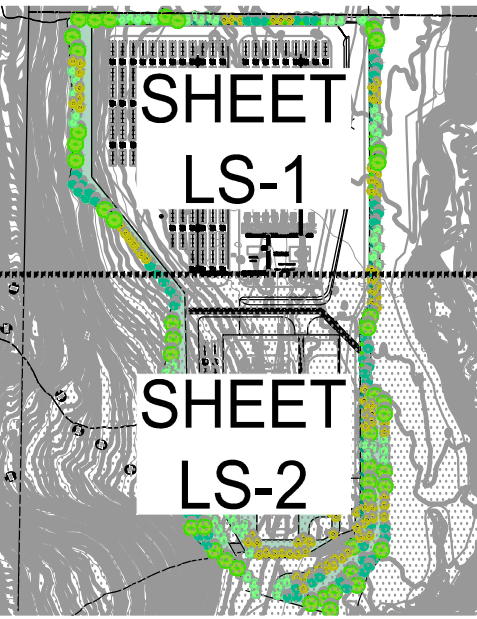
SHEET  
LS-1

13166



PLANT KEY:

BOTANICAL NAME	SYMBOL
TREES:	
LYONOTHAMNUS FLORIBUNDUS	
METROSIDEROS EXCELSUS	
QUERCUS AGRIFOLIA	
RHUS LANCEA	
SHRUBS & GROUNDCOVERS	
VINES	



PLANTING PLAN - SOUTH

SEE SHEET LS-3 FOR PLANT LEGEND, AND PLANTING AND IRRIGATION NOTES.  
SEE SHEET LS-4 FOR DETAILS AND LS-5 FOR REPRESENTATIVE TREE IMAGES.

MARCH 19, 2024

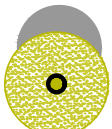

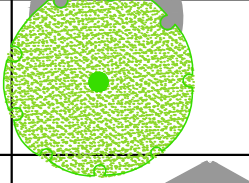
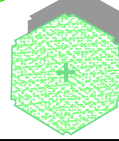
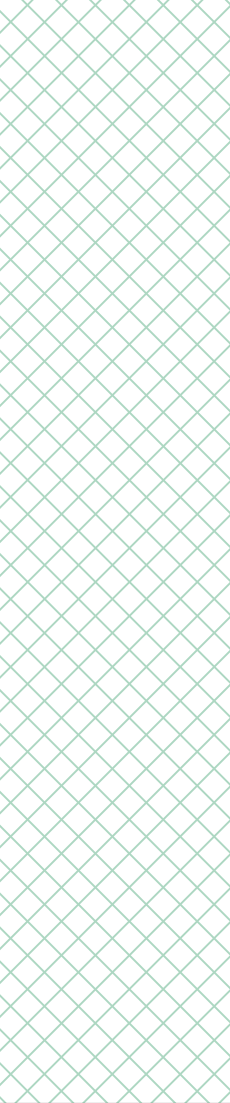
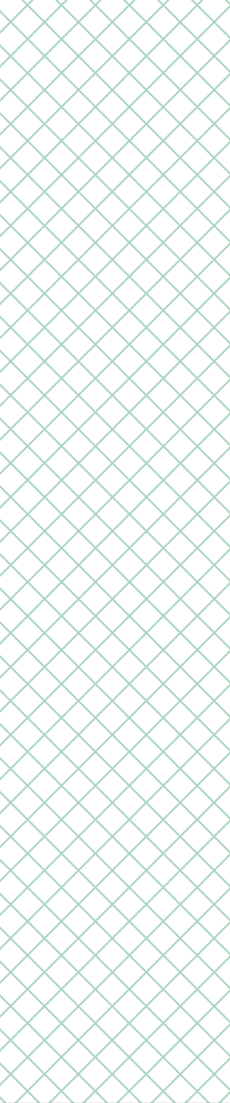
**DUDEK**  
605 3RD STREET, ENCINITAS, CA 92024  
760.942.5147



**PRELIMINARY LANDSCAPE PLAN  
COMPASS ENERGY  
STORAGE PROJECT**

FOR  
BROAD REACH POWER

SHEET  
LS-2  
13166

PLANT LEGEND:

BOTANICAL NAME	COMMON NAME	SIZE	AVERAGE SPACING	QUANTITY	HEIGHT X WIDTH	SYMBOL
TREES:						
LYONOTHAMNUS FLORIBUNDUS	CATALINA IRONWOOD	24" BOX	15'	88	30'-40' X 20'-30'	
METROSIDEROS EXCELSUS	NEW ZEALAND CHRISTMAS TREE	24" BOX	15'	55	30' X 15'	
QUERCUS AGRIFOLIA	COAST LIVE OAK	24" BOX	30'	51	20'-50' X 20'-50'	
RHUS LANCEA	AFRICAN SUMAC	24" BOX	15'	63	25'-30' X 25'-30'	
SHRUBS AND GROUNDCOVER:						
NATIVE SHRUBS						
ENCELIA CALIFORNICA	CALIFORNIA BUSH SUNFLOWER	1 GAL.	5'	630	3' X 5'	
HETEROMELES ARBUTIFOLIA	TOYON	5 GAL	15'	70	8'-15' X 10'-15'	
MIMULUS AURANTIACUS VAR. PUNICEUS	RED MONKEYFLOWER	5 GAL	3'	1,750	3' X 3'	
RHAMNUS CALIFORNICA 'EVE CASE'	CALIFORNIA COFFEEBERRY	1 GAL.	5'	630	4' X 5'	
RHUS INTEGRIFOLIA	LEMONADE BERRY	5 GAL	15'	70	10' X 10'-30'	
GROUNDCOVER						
BACCHARIS PILULARIS 'TWIN PEAKS'	DWARF COYOTE BUSH	1 GAL.	2'	3,938	N.A.	
CEANOTHUS GRISEUS HORIZONTALIS 'YANKEE POINT'	CARMEL CREEPER	1 GAL.	3'	1,750	N.A.	

VINES:						
DISTICTIS BUCCINATORIA	BLOOD RED TRUMPET VINE	5 GAL.	30'	23	N/A	
PYROSTEGIA VENUSTA	FLAME VINE	5 GAL.	30'	28	N/A	

PLANTING NOTES:

1.
- LANDSCAPE PLANTINGS AND IRRIGATION HAVE BEEN DESIGNED IN COMPLIANCE WITH THE CITY GUIDELINES AND STANDARDS FOR LANDSCAPE PLANTING AND IRRIGATION PLANS AND THE STATE'S MODEL WATER EFFICIENT LANDSCAPE ORDINANCE.
2.
- ALL SHRUB AND TREE AREAS WILL BE MULCHED WITH WALK-ON-FIR BARK AND WILL BE IRRIGATED FOR 3 TO 5 YEARS VIA AN ABOVE-GROUND LOW-FLOW SYSTEM.
3.
- DETAILED PLANTING AND IRRIGATION PLANS ARE ANTICIPATED TO BE PREPARED AT A LATER DATE, BASED UPON THIS PRELIMINARY PLAN.

IRRIGATION NOTES:

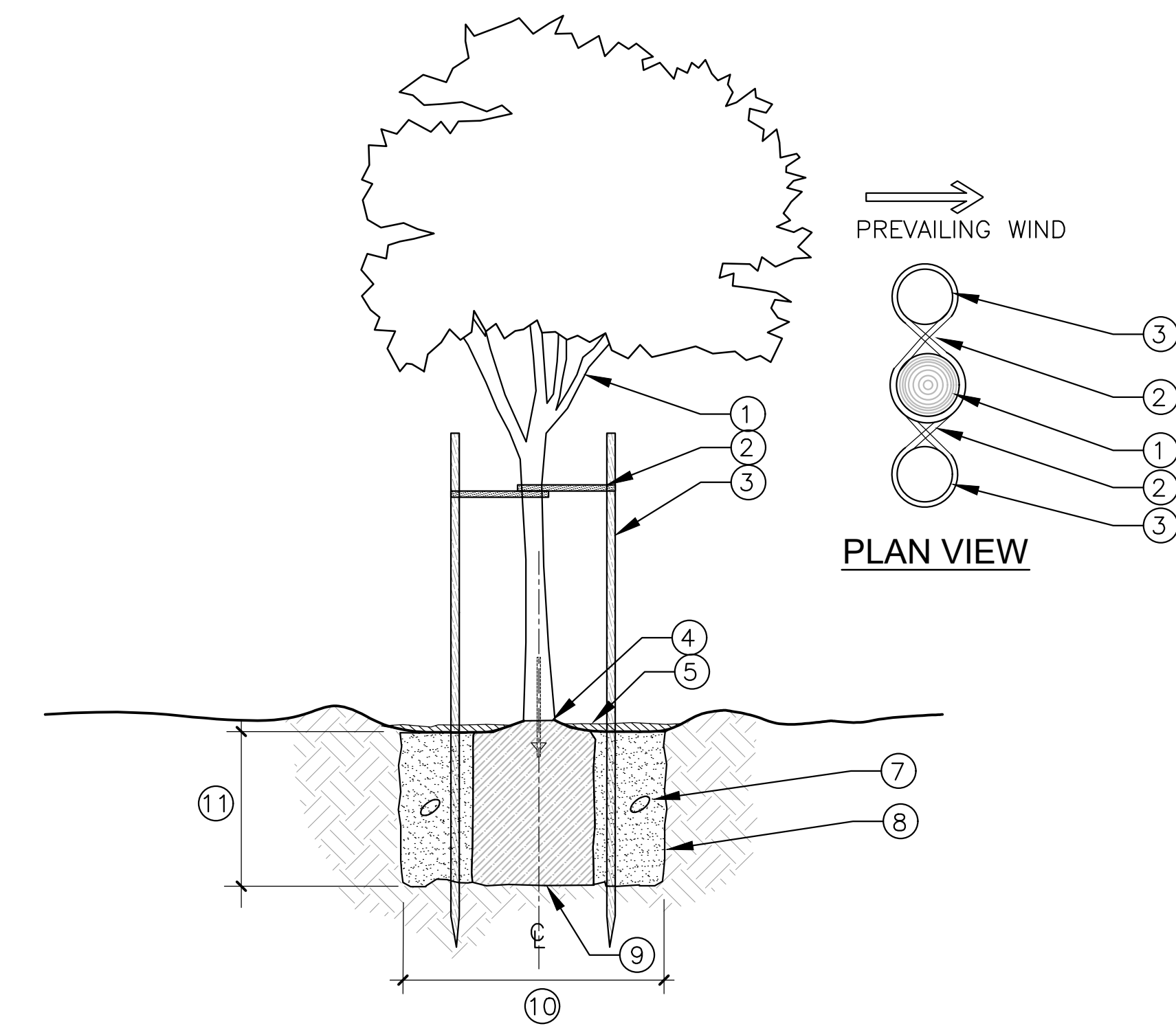
1.
- PLANTINGS ARE COMPRISED OF SOUTHERN CALIFORNIA NATIVES OR CULTIVARS OF NATIVES AND DROUGHT TOLERANT ORNAMENTAL SPECIES THAT SHOULD SURVIVE WITH MINIMAL SUPPLEMENTAL IRRIGATION ONCE ESTABLISHED.
2.
- SUPPLEMENTAL WATER WILL BE PROVIDED DURING THE DRY SEASON FOR THREE TO FIVE YEARS UNTIL PLANT ROOT SYSTEMS ARE SUFFICIENT TO SUPPORT PLANTS WITHOUT REGULAR WATER. TO WEAN PLANTS FROM SUPPLEMENTAL WATER BY THE END OF YEAR 3, IRRIGATION WILL BE SCALED BACK AFTER THE FIRST YEAR FOLLOWING CONSTRUCTION. ONCE ESTABLISHED, PLANTINGS WILL ONLY BE WATERED DURING EXCEPTIONALLY HOT AND DRY WEATHER AS NEEDED FOR PLANT SURVIVAL.
3.
- AN AUTOMATIC, ELECTRICALLY CONTROLLED IRRIGATION SYSTEM SHALL BE PROVIDED AS REQUIRED BY LDC 142.0403(C) FOR PROPER IRRIGATION, DEVELOPMENT, AND MAINTENANCE OF THE VEGETATION IN A HEALTHY, DISEASE-RESISTANT CONDITION.
4.
- THE DESIGN OF THE SYSTEM SHALL PROVIDE ADEQUATE SUPPORT FOR THE VEGETATION SELECTED.
5.
- BROAD BEACH POWER WILL BE RESPONSIBLE FOR LANDSCAPE MAINTENANCE.
6.
- IF PHYSICAL AREA IS OCCUPIED BY TWO ZONES OF DIFFERING IRRIGATION NEEDS, FOR INSTANCE, MEDIUM WATER USE TREES WITH LOW WATER USE SHRUBS. IN THESE CASES, THE HIGHER WATER USE TAKES PRECEDENCE OVER THE LOWER, EXCEPT WHERE THE ZONES DO NOT OVERLAP.

PLANT LEGEND AND NOTES

SEE SHEETS LS-1 AND LS-2 FOR PLANTING PLANS.  
SEE SHEET LS-4 FOR DETAILS AND LS-5 FOR REPRESENTATIVE TREE IMAGES.

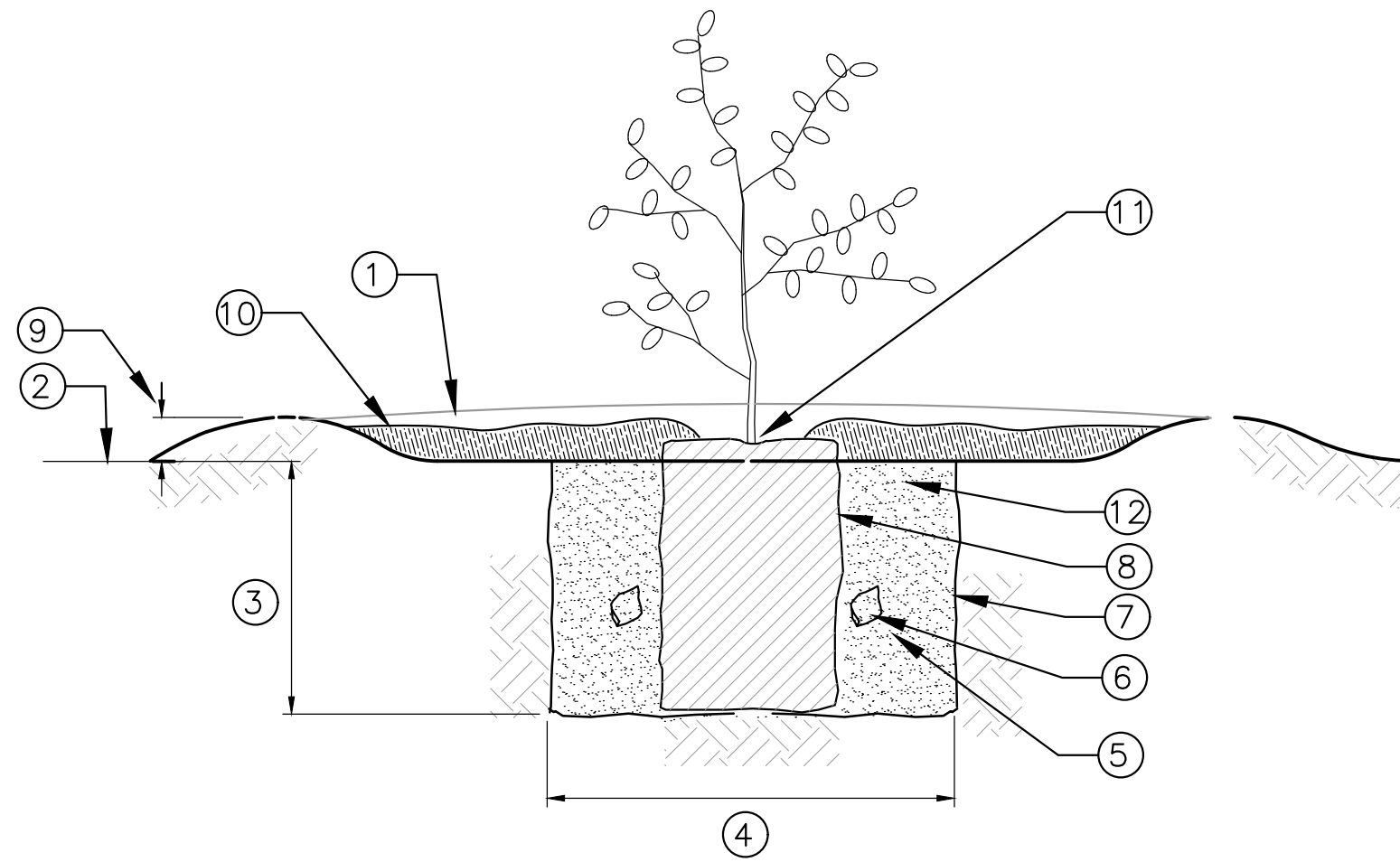
MARCH 19, 2024

<div>DUDEK</div> <div>605 3RD STREET, ENCINITAS, CA 92024</div> <div>760.942.5147</div>	PRELIMINARY LANDSCAPE PLAN	SHEET
	COMPASS ENERGY	LS-3
FOR BROAD REACH POWER		13166



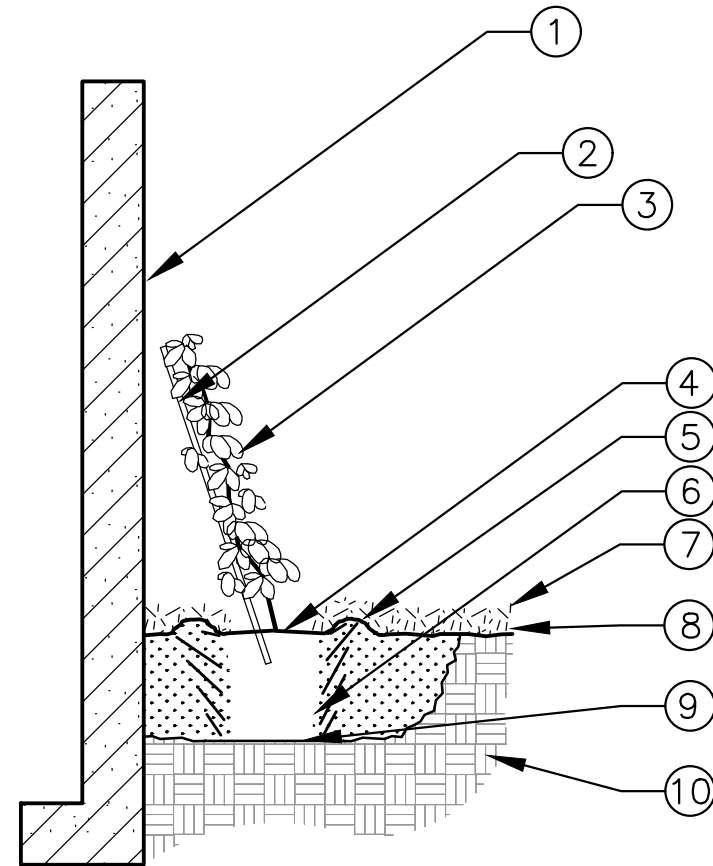
ITEM	DESCRIPTION
1	15 GALLON OR 24" BOX TREE, (SEE PLANS & PLANTING LIST)
2	(2) No.10 GAUGE GALVANIZED WIRE WITH RUBBER OR PLASTIC HOSE AROUND. STAPLE TO STAKE
3	(2) 2" DIAMETER TREATED LODGEPOLE TREE STAKES (SET PLUMB); DO NOT PENETRATE ROOTBALL
4	ROOT CROWN/TRUNK FLARE OF TREE 1" ABOVE FINISH GRADE
5	2" THICK MULCH LAYER IN PLANTING BASIN, AS SPECIFIED. HOLD BACK 3" FROM ROOT CROWN
6	WATERING BASIN 6" ABOVE FINISH GRADE, FIRMLY COMPACTED
7	CONTROLLED RELEASE FERTILIZER PACKETS TO BE INCLUDED IN BACKFILL MIX (PER SOIL ANALYSIS). PACKS PER TREE: (9) FOR 15 GAL., (15) FOR 24" BOX
8	BACK FILL MIX PER SOIL AMENDING REQUIREMENTS
9	ROOT BALL (SIZE VARIES PER PLAN)
10	EXCAVATE TO DEPTH OF ROOTBALL
11	EXCAVATE TO 2.5X WIDTH OF ROOTBALL

**A**  
LS-4  
24" BOX OR 15 GALLON TREE PLANTING  
NOT TO SCALE



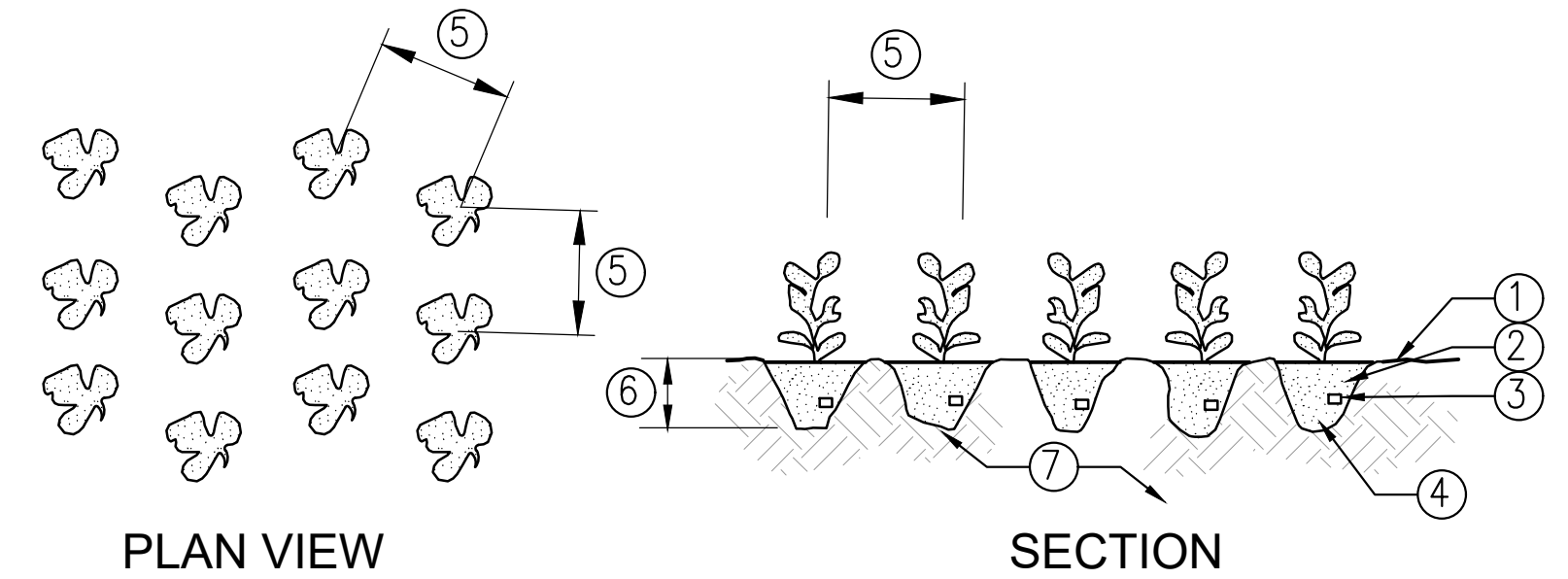
ITEM	DESCRIPTION
1	EXISTING GRADE
2	FINISH GRADE
3	DIG PLANTING HOLE DEPTH OF ROOT BALL & 2X WIDTH
4	TWO TIMES WIDTH OF ROOT BALL
5	WATER AND TAMP BACKFILL MIX WELL. TO BE FREE OF ROCKS AND CLODS OVER 1" DIA.
6	2 CONTROLLED RELEASE FERTILIZER PACKETS TO BE INCLUDED IN BACKFILL MIX
7	SCARIFY SIDES OF PLANTING PIT
8	ROOT BALL
9	WATERING BASIN 6" ABOVE FINISH GRADE
10	3" THICK SHREDDED BARK MULCH LAYER 18" RADIUS. HOLD BACK 3" FROM ROOT CROWN
11	ROOT CROWN OF SHRUB 1" ABOVE FINISH GRADE
12	BACK FILL MIX PER SOIL AMENDING REQUIREMENTS

**C**  
LS-4  
1 GALLON AND 5 GALLON SHRUB PLANTING  
NOT TO SCALE



ITEM	DESCRIPTION
1	FACE OF WALL OR BUILDING
2	LEAN NURSERY STAKE AGAINST THE WALL. STAKE TO BE REMOVED AT THE END OF THE MAINTENANCE PERIOD AFTER THE VINE HAS ATTACHED TO THE WALL.
3	VINE
4	THREE TIMES WIDTH OF ROOT BALL
5	4" TO 8" WIDE ROUND TOPPED SOIL BERM ABOVE ROOT BALL SURFACE AROUND ROOT BALL
6	POUR WATER AROUND THE ROOT BALL TO SETTLE THE SOIL
7	4" LAYER OF MULCH
8	FINISH GRADE
9	ROOT BALL RESTS ON EXISTING OR RECOMPACTED SOIL
10	EXISTING SOIL

**D**  
LS-4  
VINE PLANTING  
NOT TO SCALE



ITEM	DESCRIPTION
1	FINISH GRADE
2	ROOT BALL
3	1 CONTROLLED RELEASE FERTILIZER PACKETS TO BE INCLUDED IN BACKFILL MIX
4	WATER AND TAMP BACKFILL MIX WELL
5	SEE PLANTING LEGEND FOR SPACING. PLANT GROUNDCOVER PLANTS EVENLY AT 12" O.C.
6	DEPTH OF ROOT BALL
7	AMENDED SOIL

**C**  
LS-4  
SHRUB/GROUNDCOVER PLANTING  
NOT TO SCALE

## PLANTING DETAILS

SEE SHEET LS-3 FOR PLANT LEGEND, AND PLANTING AND IRRIGATION NOTES.  
SEE SHEET LS-5 FOR REPRESENTATIVE TREE IMAGES.

MARCH 19, 2024

**DUDEK**  
605 3RD STREET, ENCINITAS, CA 92024  
760.942.5147

**PRELIMINARY LANDSCAPE PLAN**  
**COMPASS ENERGY**  
**STORAGE PROJECT**

FOR BROAD REACH POWER

SHEET  
LS-4

13166



A  
LS-5  
LYONOTHAMNUS FLORIBUNDUS  
NOT TO SCALE



B  
LS-5  
METROSIDEROS EXCELSUS  
NOT TO SCALE



C  
LS-5  
QUERCUS AGRIFOLIA  
NOT TO SCALE



D  
LS-5  
RHUS LANCEA  
NOT TO SCALE

REPRESENTATIVE TREE IMAGES

SEE SHEET LS-3 FOR PLANT LEGEND, AND PLANTING AND IRRIGATION NOTES.  
SEE SHEET LS-4 FOR PLANTING DETAILS.

MARCH 19, 2024

**DUDEK**  
605 3RD STREET, ENCINITAS, CA 92024  
760.942.5147

**PRELIMINARY LANDSCAPE PLAN  
COMPASS ENERGY  
STORAGE PROJECT**

FOR BROAD REACH POWER

SHEET  
LS-5

13166

