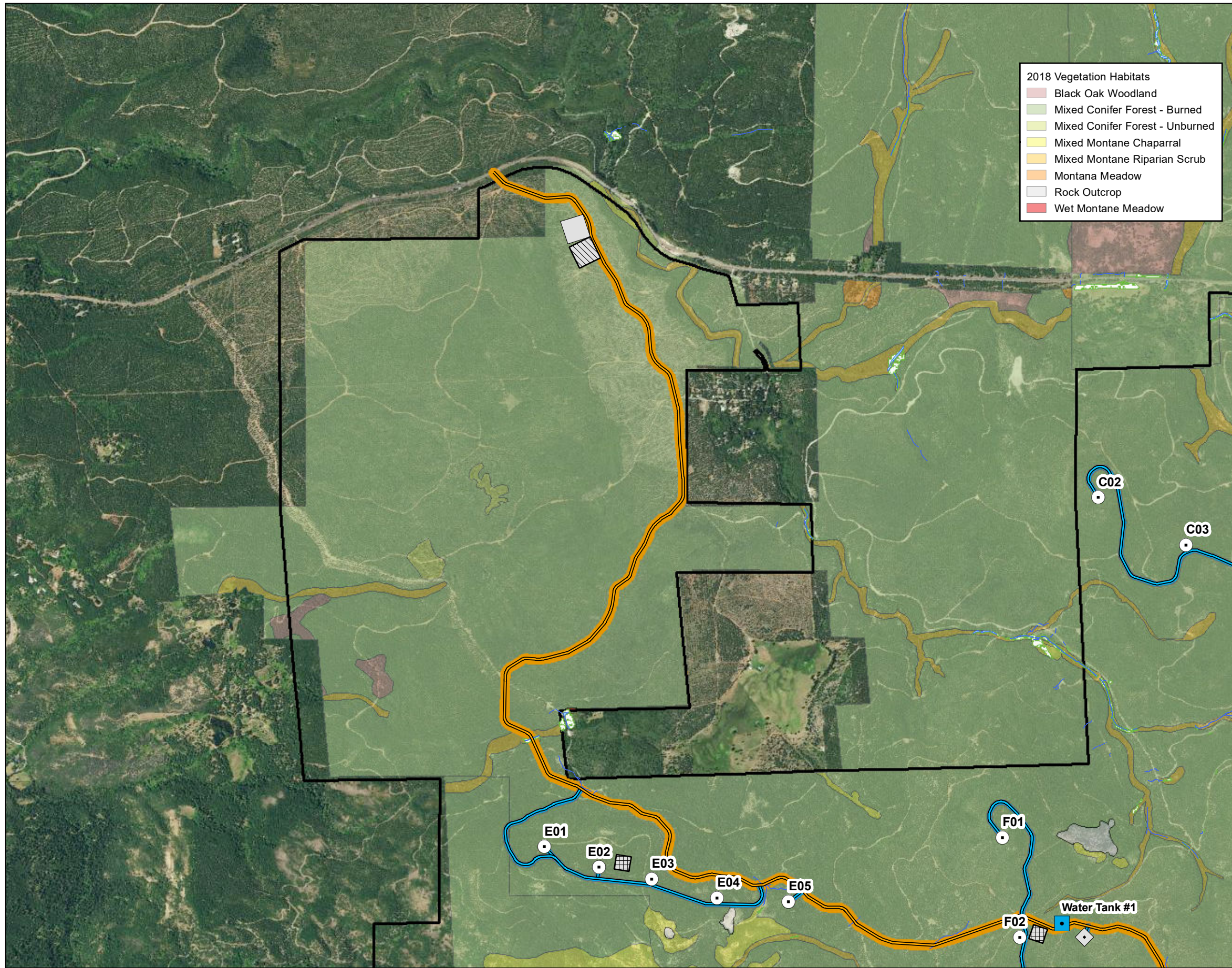


**DOCKETED**

<b>Docket Number:</b>	23-OPT-01
<b>Project Title:</b>	Fountain Wind Project
<b>TN #:</b>	254341
<b>Document Title:</b>	fwp_fuel_breaks_fig2
<b>Description:</b>	N/A
<b>Filer:</b>	Caitlin Barns
<b>Organization:</b>	Stantec Consulting Services, Inc.
<b>Submitter Role:</b>	Applicant Consultant
<b>Submission Date:</b>	2/6/2024 8:46:18 AM
<b>Docketed Date:</b>	2/6/2024

V:\1950\active\Task Owner and other Non-BC1956 Jobs\185703743003\_data\gis\_cad\gis\_cad\gis\_cad\185703743003\_project\location.mxd Revised: 2024-02-01 By: jostdavis



- 2018 Vegetation Habitats**
- Black Oak Woodland
  - Mixed Conifer Forest - Burned
  - Mixed Conifer Forest - Unburned
  - Mixed Montane Chaparral
  - Mixed Montane Riparian Scrub
  - Montana Meadow
  - Rock Outcrop
  - Wet Montane Meadow

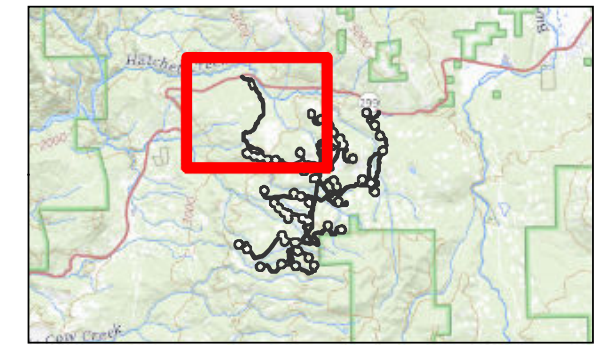


- Legend**
- Proposed Water Tank
  - Secondary Access Roads
  - Primary Access Roads
  - Secondary Access Road Fuel Break (50-foot)
  - Primary Access Road Fuel Break (100-foot)
  - Turbine Location
  - Met Tower Location
  - Project Boundary
  - Batch Plant
  - O&M Facility
  - Staging Area
  - Delineated Watercourses
  - Delineated Wetlands



0 2,000 Feet  
 (At original document size of 11x17)  
 1:24,000

- Notes**
- Coordinate System: NAD 1983 UTM Zone 10N
  - Data Sources: Shasta County GIS Division
  - Background: 2020 NAIP Orthomagey



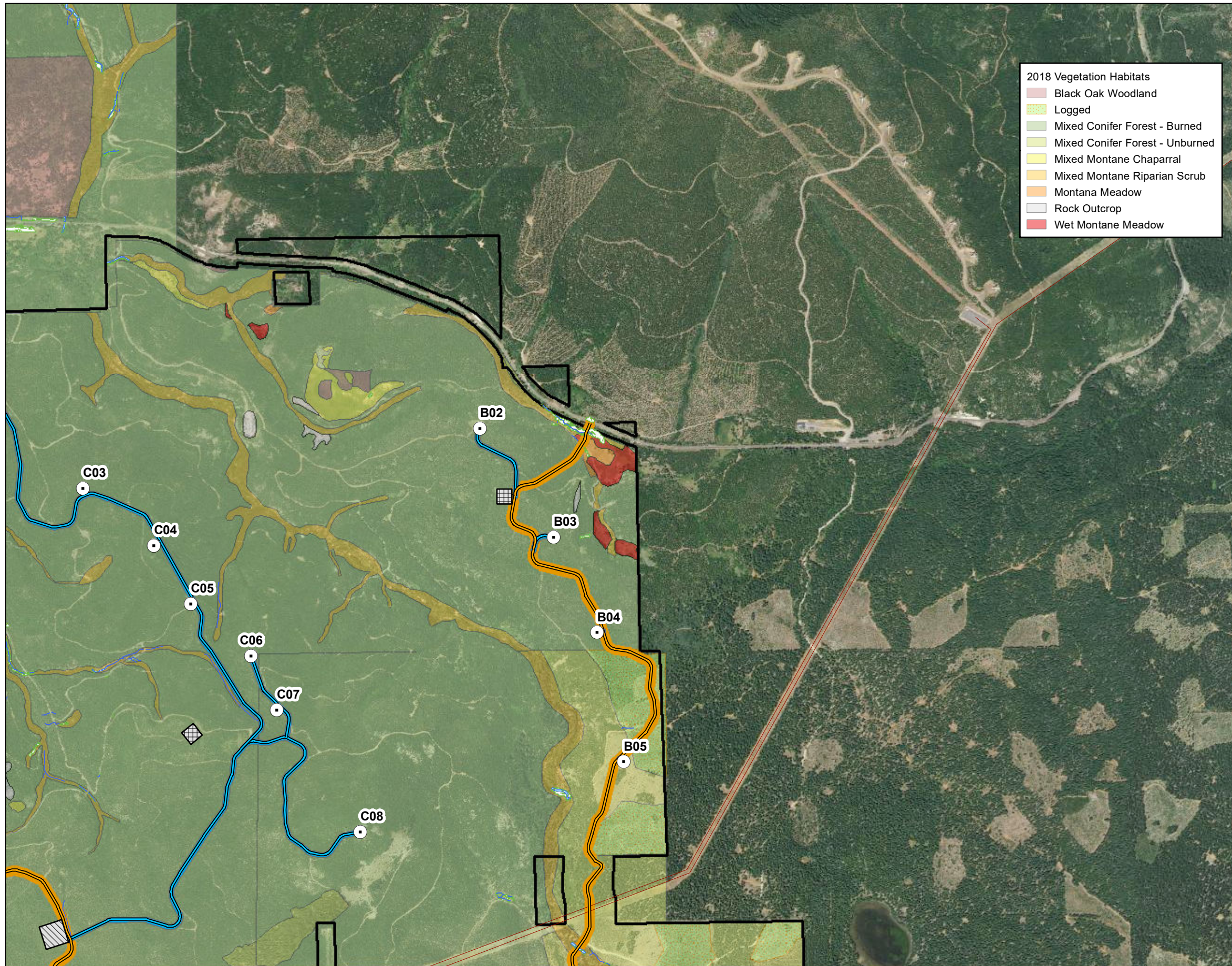
**Project Location**  
 Shasta County  
 California

**Client/Project**  
 Fountain Wind LLC  
 Fountain Wind Project

Prepared by JD on 2024-02-01  
 TR Review by KWH on 2024-02-01  
 203723159

**Figure No.**  
 2

**Title**  
 Shaded Fuel Breaks and Primary and Secondary Access Roads -Map 1 of 4



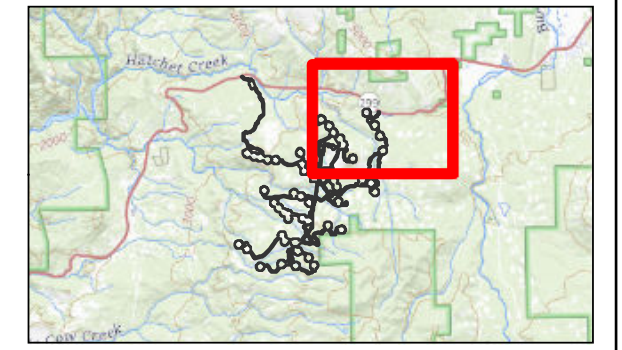
- 2018 Vegetation Habitats**
- Black Oak Woodland
  - Logged
  - Mixed Conifer Forest - Burned
  - Mixed Conifer Forest - Unburned
  - Mixed Montane Chaparral
  - Mixed Montane Riparian Scrub
  - Montana Meadow
  - Rock Outcrop
  - Wet Montane Meadow

- Legend**
- Secondary Access Roads
  - Primary Access Roads
  - Secondary Access Road Fuel Break (50-foot)
  - Primary Access Road Fuel Break (100-foot)
  - Turbine Location
  - Project Boundary
  - Batch Plant
  - Staging Area
  - Delineated Watercourses
  - Delineated Wetlands
  - Existing Overhead Transmission Line



0 2,000 Feet  
 (At original document size of 11x17)  
 1:24,000

- Notes**
1. Coordinate System: NAD 1983 UTM Zone 10N
  2. Data Sources: Shasta County GIS Division
  3. Background: 2020 NAIP Orthoimagery



**Project Location**  
 Shasta County  
 California

**Client/Project**  
 Fountain Wind LLC  
 Fountain Wind Project

Prepared by JD on 2024-02-01  
 TR Review by KWH on 2024-02-01  
 203723159

**Figure No.**  
 2

**Title**  
 Shaded Fuel Breaks and Primary and Secondary Access Roads -Map 2 of 4

V:\1950\active\Task Owner and other Non-BC1956 Jobs\185703743003\_data\gis\_cad\gis\_cad\185703743003\_projectLocation.mxd Revised: 2024-02-01 By: joadavis



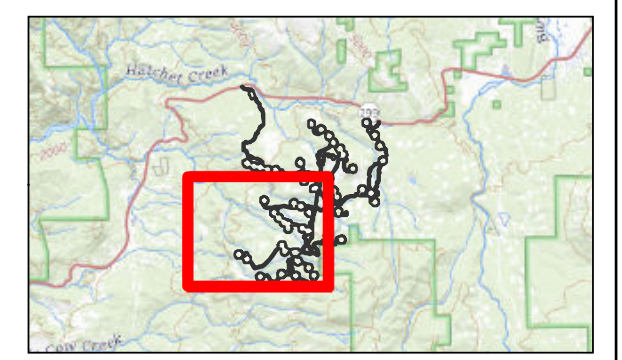
Legend

- Proposed Water Tank
- Secondary Access Roads
- Primary Access Roads
- Secondary Access Road Fuel Break (50-foot)
- Primary Access Road Fuel Break (100-foot)
- Turbine Location
- Met Tower Location
- Microwave Tower Location
- Project Boundary
- Batch Plant
- Staging Area
- Substation/Switchyard Site
- Delineated Watercourses
- Delineated Wetlands
- Existing Overhead Transmission Line



0 2,000 Feet  
 (At original document size of 11x17)  
 1:24,000

- Notes**
1. Coordinate System: NAD 1983 UTM Zone 10N
  2. Data Sources: Shasta County GIS Division
  3. Background: 2020 NAIP Orthomogery



**Project Location**  
 Shasta County  
 California

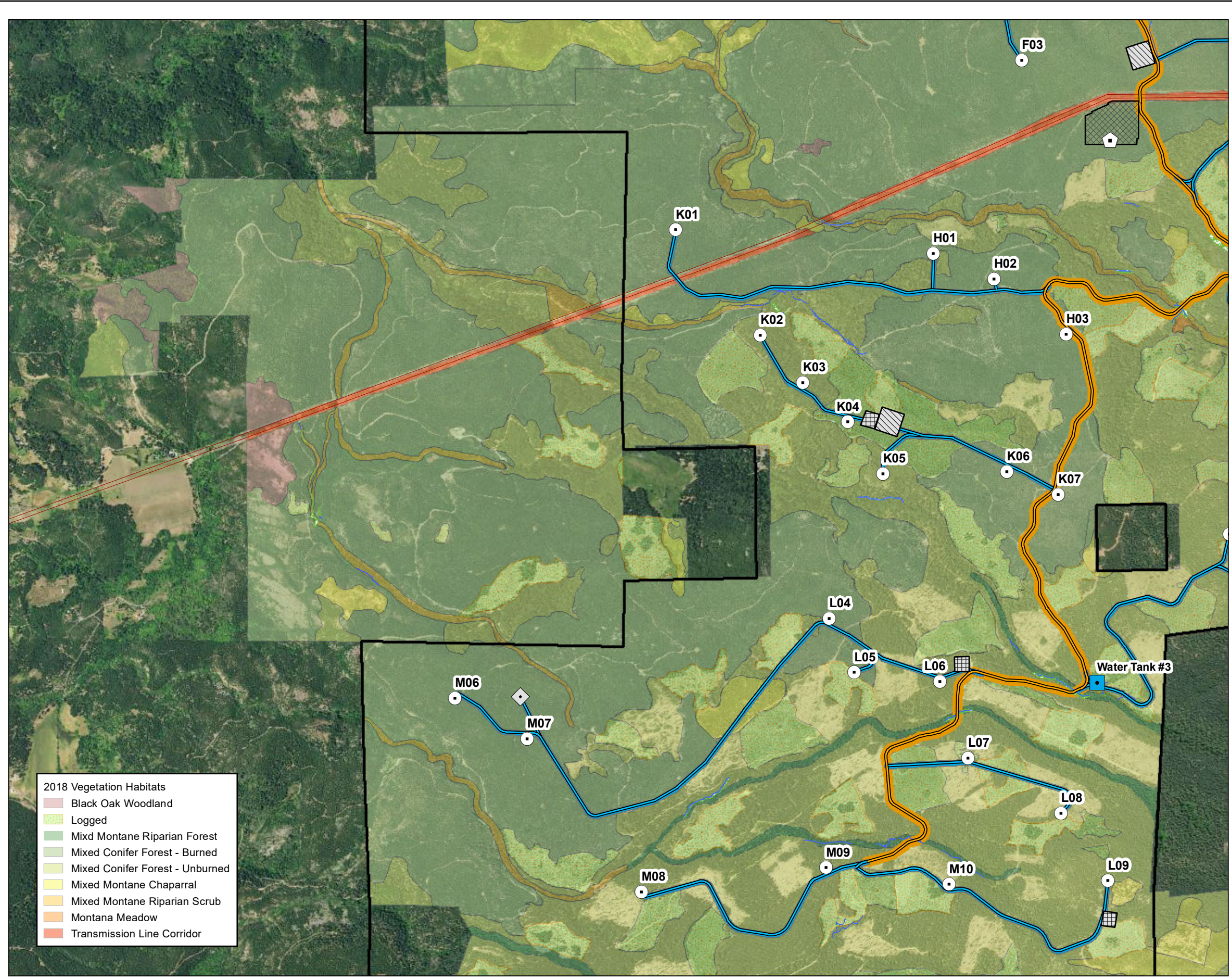
Prepared by JD on 2024-02-01  
 TR Review by KWH on 2024-02-01

**Client/Project**  
 Fountain Wind LLC  
 Fountain Wind Project

203723159

**Figure No.**  
 2

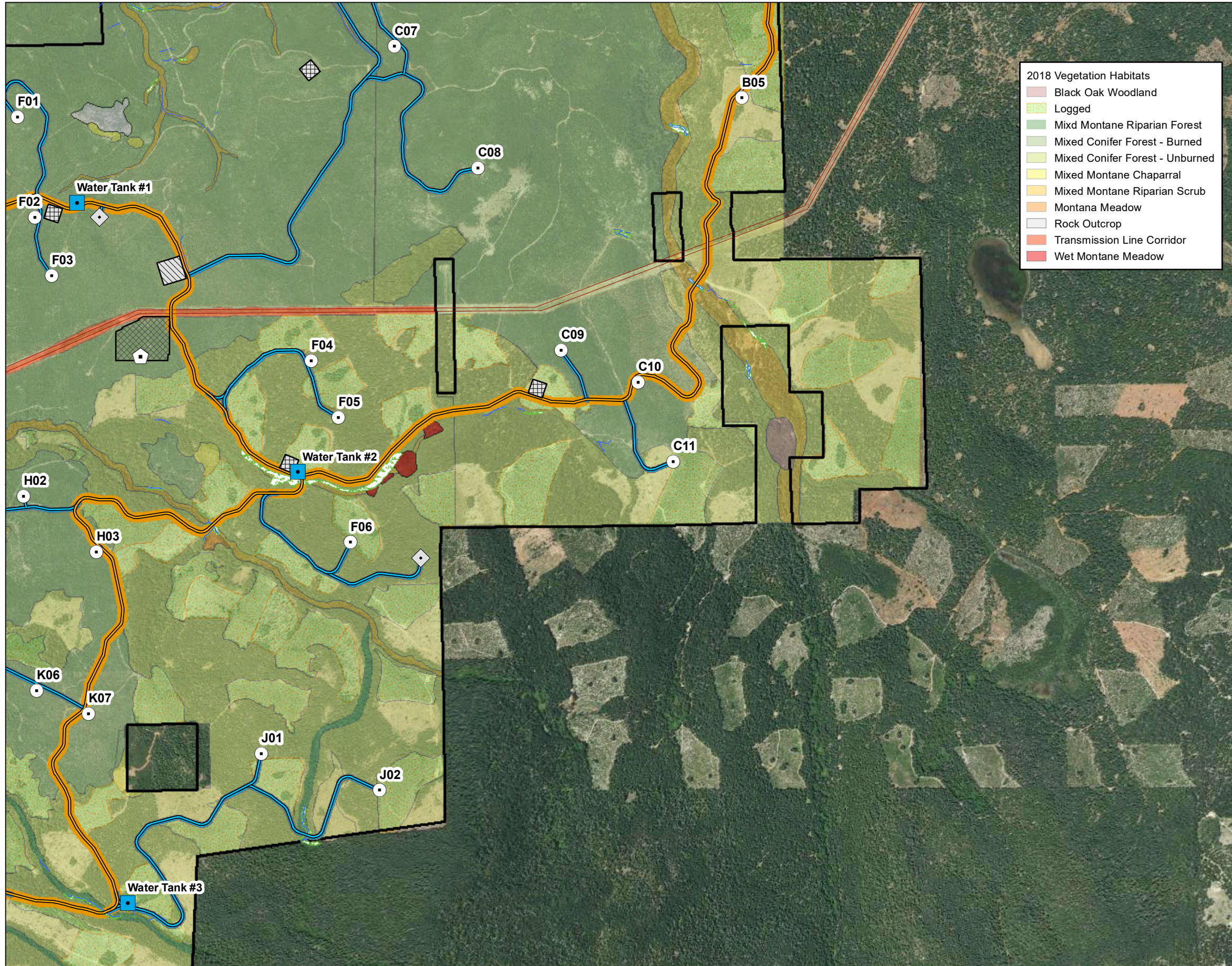
**Title**  
 Shaded Fuel Breaks and Primary and Secondary Access Roads -Map 3 of 4



- 2018 Vegetation Habitats**
- Black Oak Woodland
  - Logged
  - Mixed Montane Riparian Forest
  - Mixed Conifer Forest - Burned
  - Mixed Conifer Forest - Unburned
  - Mixed Montane Chaparral
  - Mixed Montane Riparian Scrub
  - Montana Meadow
  - Transmission Line Corridor

V:\1950\active\Task Owner and other Non-BC1956 Jobs\185703743003\_data\gis\_cad\gis\_cad\gis\_cad\185703743003\_projectLocation.mxd Revised: 2024-02-01 By: jostdavis

V:\1950\active\Task Owner and other Non-BC1956\_Jobs\18570374303\_data\gis\_cad\gis\mxd\2024\185703743\_project\Location.mxd Revised: 2024-02-01 By: josedavis



- 2018 Vegetation Habitats**
- Black Oak Woodland
  - Logged
  - Mixed Montane Riparian Forest
  - Mixed Conifer Forest - Burned
  - Mixed Conifer Forest - Unburned
  - Mixed Montane Chaparral
  - Mixed Montane Riparian Scrub
  - Montana Meadow
  - Rock Outcrop
  - Transmission Line Corridor
  - Wet Montane Meadow

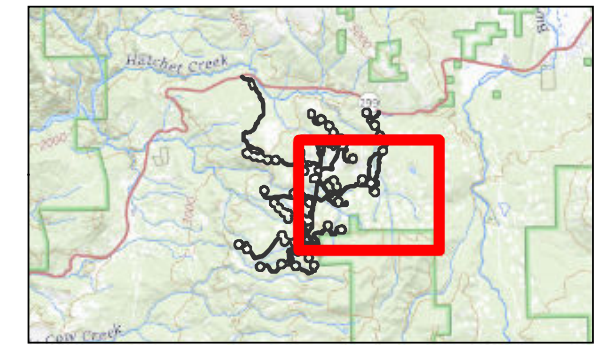


- Legend**
- Proposed Water Tank
  - Secondary Access Roads
  - Primary Access Roads
  - Secondary Access Road Fuel Break (50-foot)
  - Primary Access Road Fuel Break (100-foot)
  - Turbine Location
  - Met Tower Location
  - Microwave Tower Location
  - Project Boundary
  - Batch Plant
  - Staging Area
  - Substation/Switchyard Site
  - Delineated Watercourses
  - Delineated Wetlands
  - Existing Overhead Transmission Line



0 2,000 Feet  
 (At original document size of 11x17)  
 1:24,000

- Notes**
1. Coordinate System: NAD 1983 UTM Zone 10N
  2. Data Sources: Shasta County GIS Division
  3. Background: 2020 NAIP Orthomogery



**Project Location**  
 Shasta County  
 California

Prepared by JD on 2024-02-01  
 TR Review by KWH on 2024-02-01

**Client/Project**  
 Fountain Wind LLC  
 Fountain Wind Project

203723159

**Figure No.**  
 2

**Title**  
 Shaded Fuel Breaks and Primary and Secondary Access Roads -Map 4 of 4