

| DOCKETED | |
|-------------------------|--|
| Docket Number: | 23-AFC-02 |
| Project Title: | Elmore North Geothermal Project (ENGP) |
| TN #: | 252010 |
| Document Title: | Presentation - BHE Renewables Black Rock, Elmore North, & Morton Bay Geothermal Projects CEC Informational Hearing |
| Description: | N/A |
| Filer: | Amanda Cooley |
| Organization: | Ellison Schneider Harris & Donlan LLP |
| Submitter Role: | Applicant Representative |
| Submission Date: | 8/28/2023 4:04:27 PM |
| Docketed Date: | 8/28/2023 |



Black Rock, Elmore North and Morton Bay Geothermal Projects California Energy Commission Informational Hearing

August 31, 2023



LAND ACKNOWLEDGMENT



We acknowledge the traditional homelands of the Indigenous people of California's Imperial Valley. The Kwaaymii, Cahuilla, and Quechan Tribes inhabit lands in this region. We honor them as America's First Peoples along with their past, present, and future. We honor with gratitude the land itself and the people who have stewarded it throughout the generations.

ABOUT BHE RENEWABLES

A Leader In Clean Sustainable Energy

CalEnergy

CalEnergy is a wholly owned subsidiary of BHE Renewables that produces geothermal energy in Calipatria, California

10 power plants

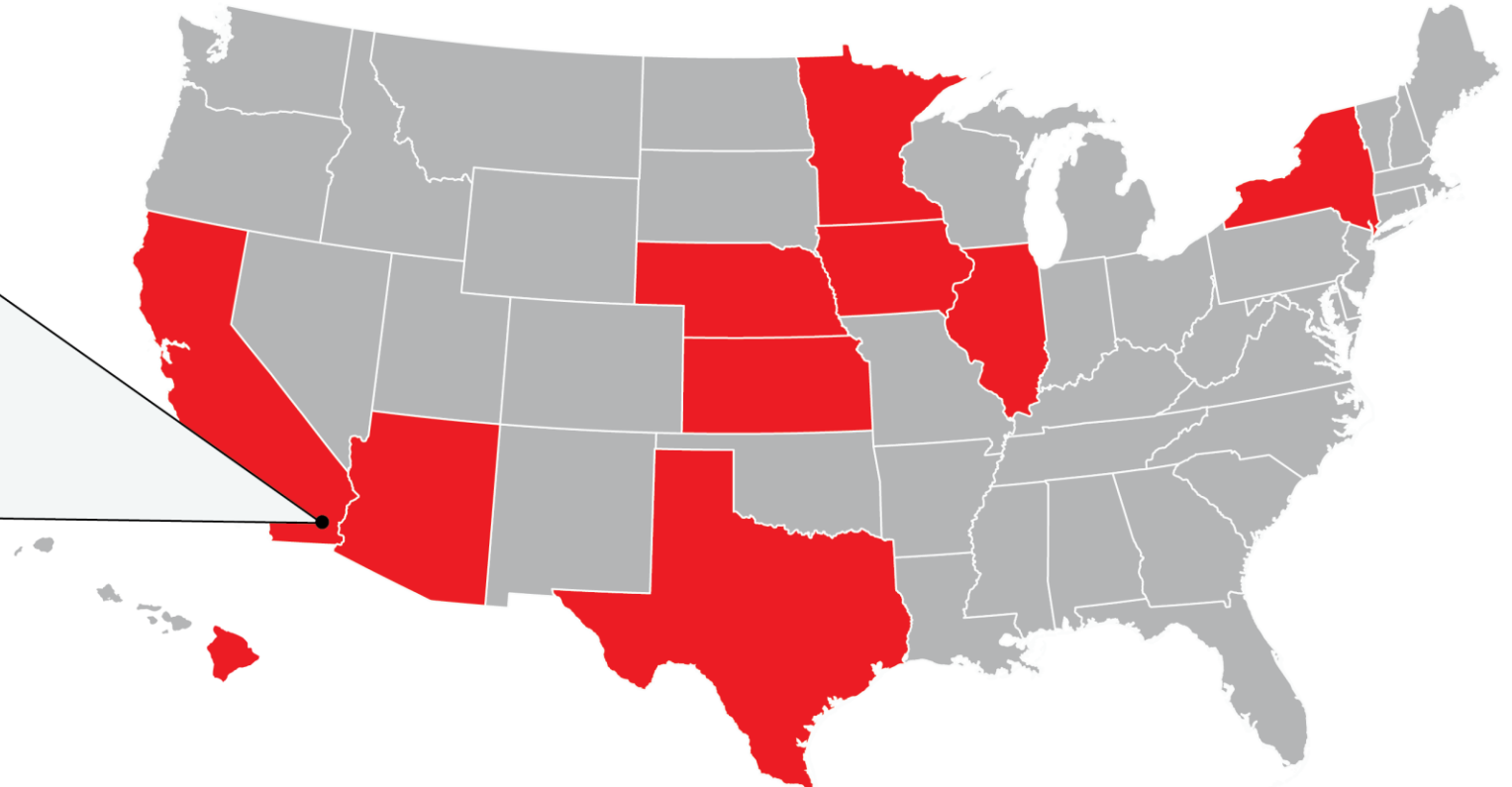
345 MW capacity

230 employees

Wind: 2,307 MW

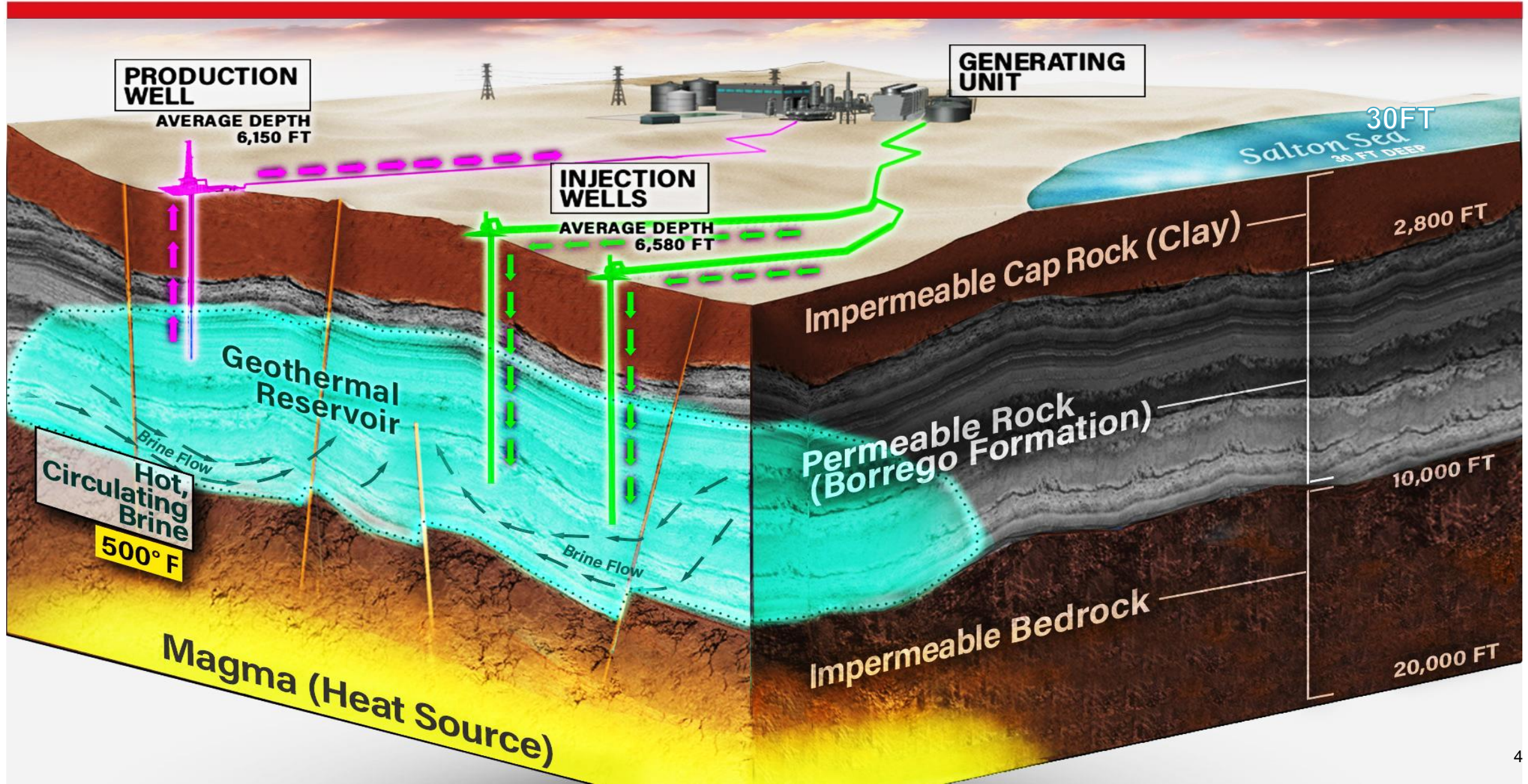
Solar: 1,536 MW

Hydro: 10 MW

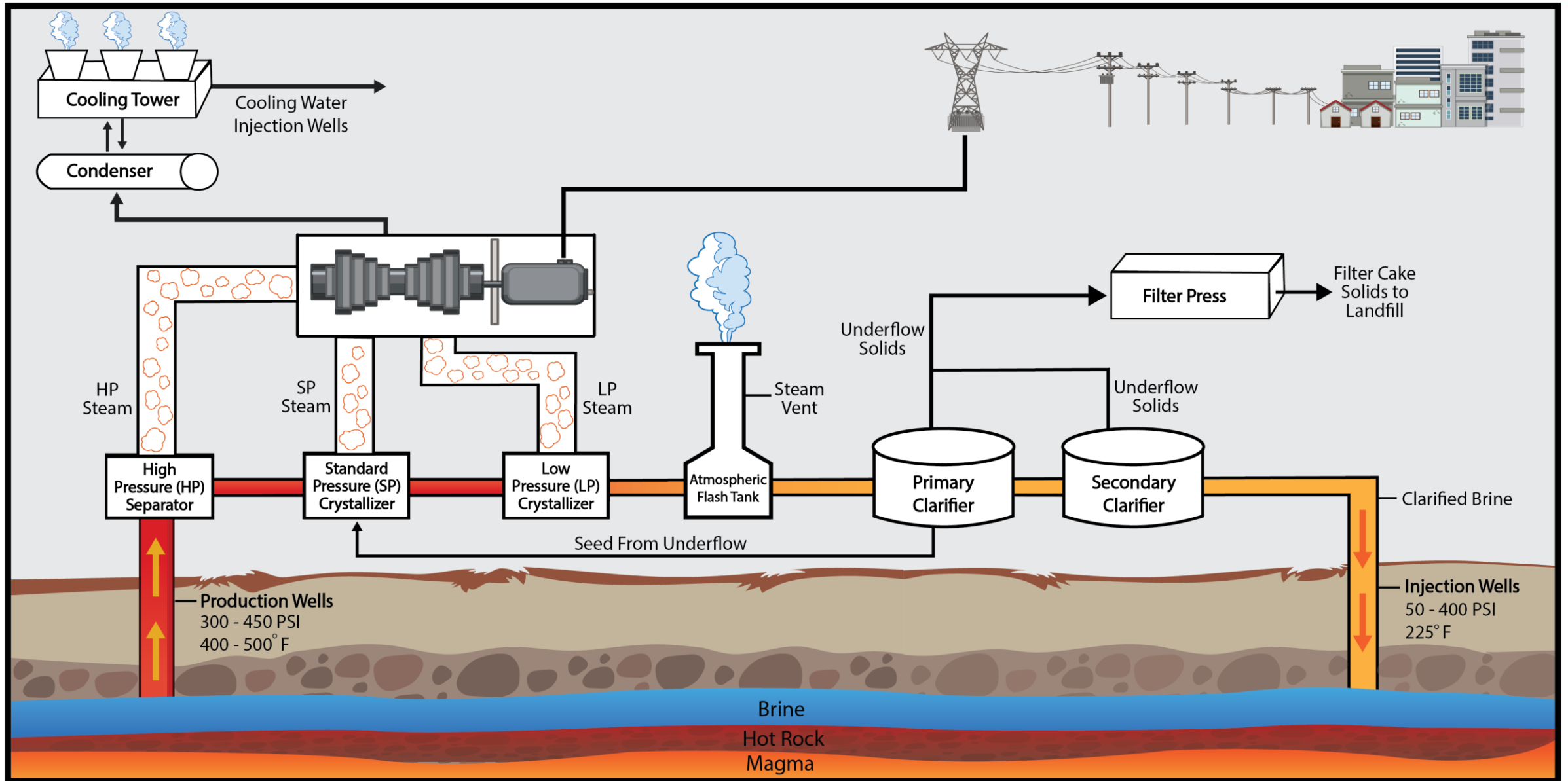


BHE Renewables has a combined generation capacity of 5,168 MW across 10 states

GEO THERMAL RESOURCE



GEOHERMAL POWER PRODUCTION PROCESS



GEOHERMAL WATER USAGE



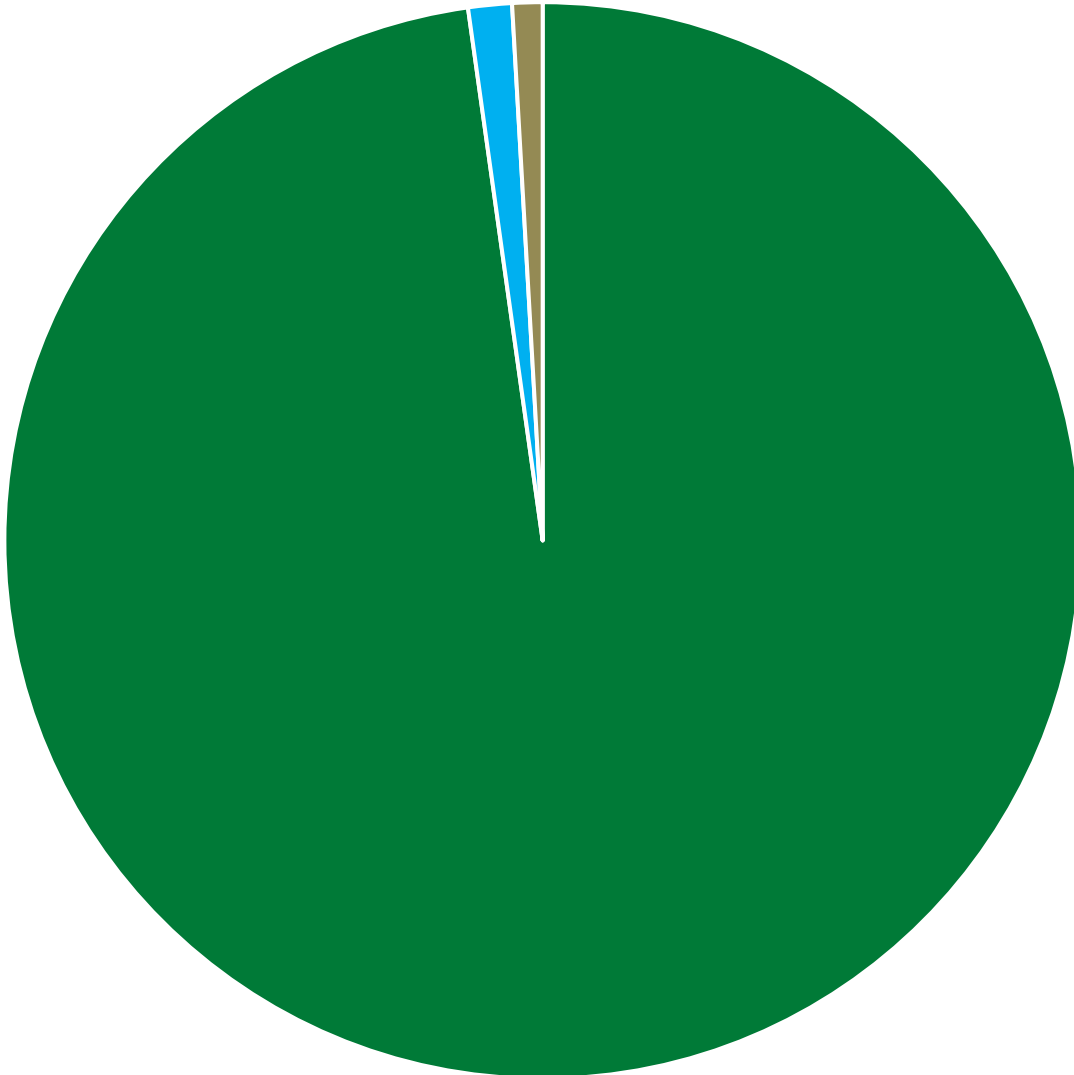
How We Use Water

- Used to keep salts and other minerals dissolved in the brine
- Ensures the resource remains sustainable and renewable
- We continue to evaluate new technologies and processes to reduce and recycle water as much as possible

Proposed Projects

| Operational Water Usage | Acre-Feet Annually |
|-------------------------|--------------------|
| Black Rock | 1,125 |
| Morton Bay | 5,560 |
| Elmore North | 6,480 |
| Total | 13,165 |

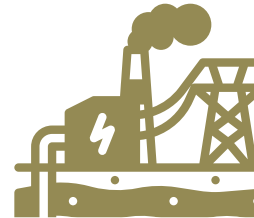
IID WATER ALLOCATION IN 2022 – 2,500,878 ACRE-FEET



~97.8% Agriculture



~1.3% Drinking Water



**~0.9% Industrial/
Commercial**



**~0.5% Proposed geothermal
Projects water use based
on 2022 allocations**

GEOHERMAL DEVELOPMENT SUMMARY

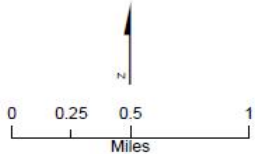
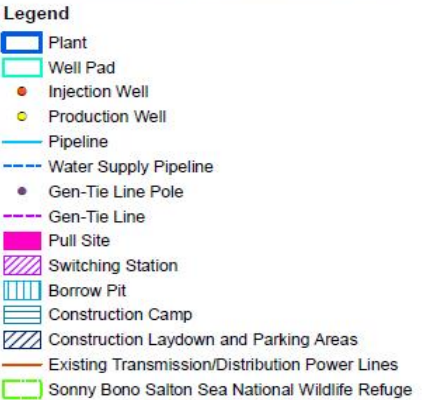
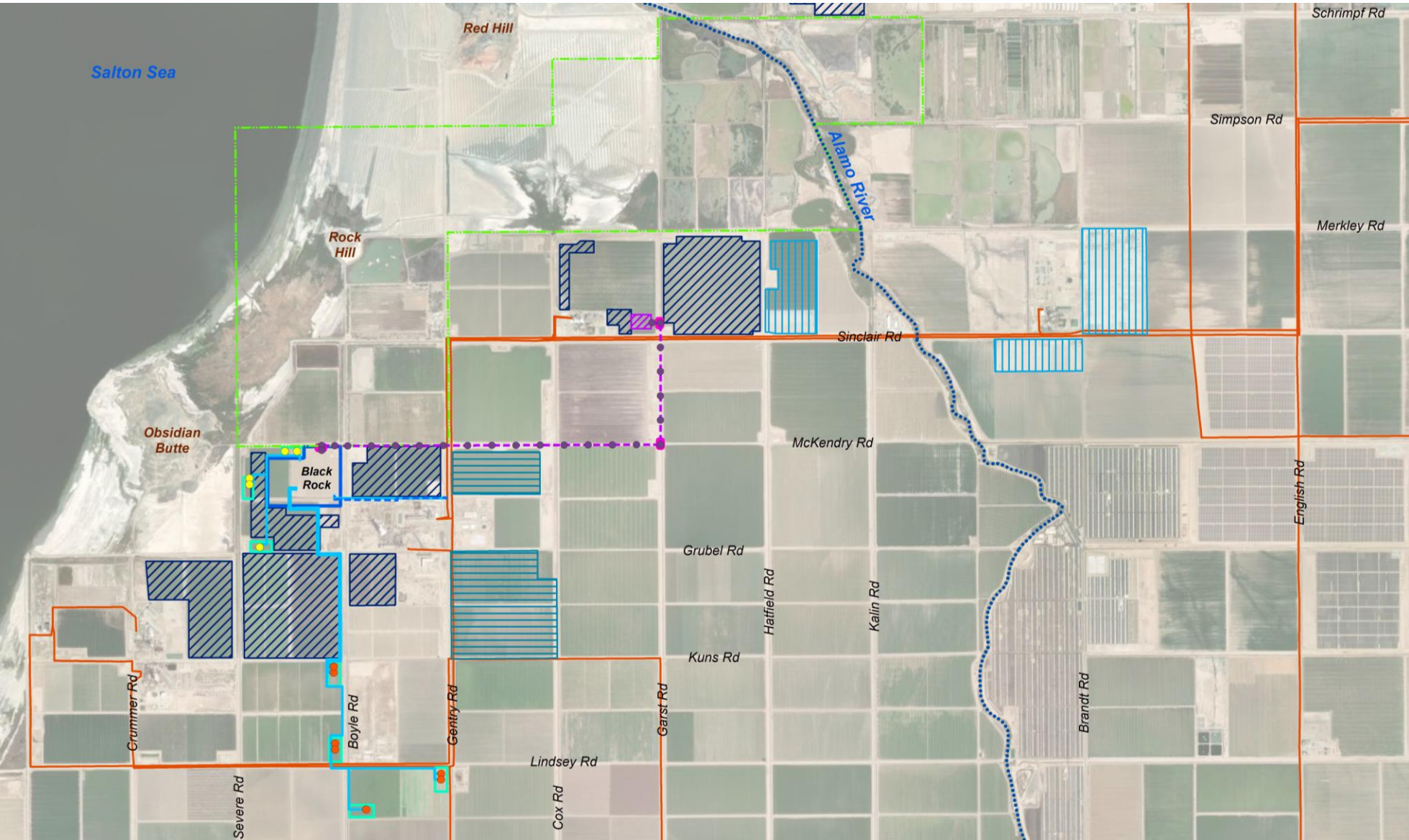


| Facilities | Black Rock | Morton Bay | Elmore North |
|-----------------------|------------|------------|--------------|
| Geothermal Wells | 12 | 20 | 20 |
| Gross Generation (MW) | 87 | 157 | 157 |

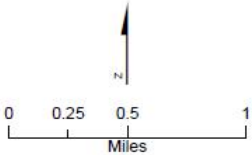
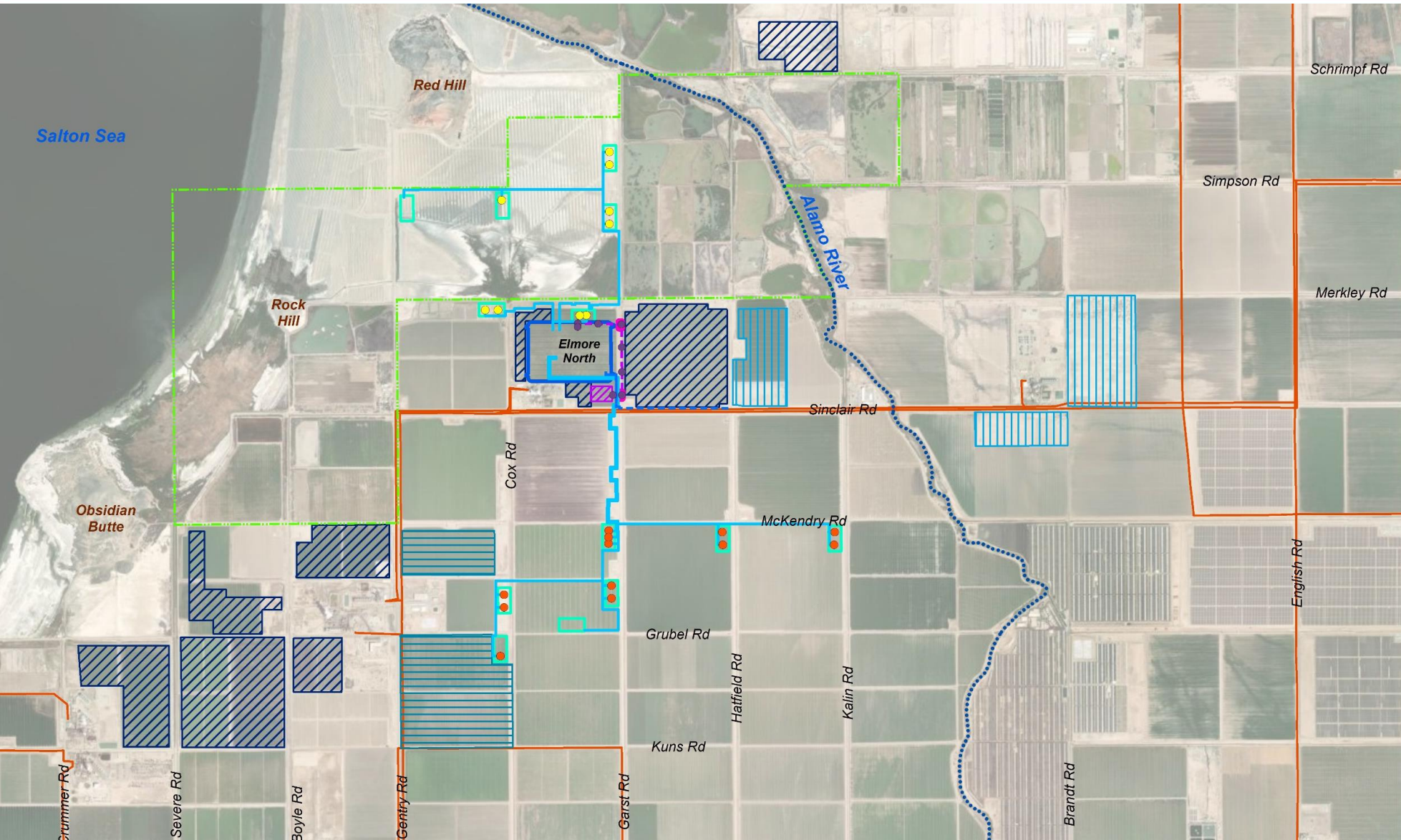
Geothermal Development Projects (401 MW)

- Resource Adequacy:** California determined projects have adequate geothermal resources to support designed output
- Transmission:** Less than 6 miles for Projects generation interconnection lines
- Construction Labor:** Anticipate use of and support by union labor
- Commercial Operations Date:** 2026 – 2028
- Geothermal Expansion:** Approximately 200 new jobs

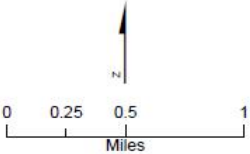
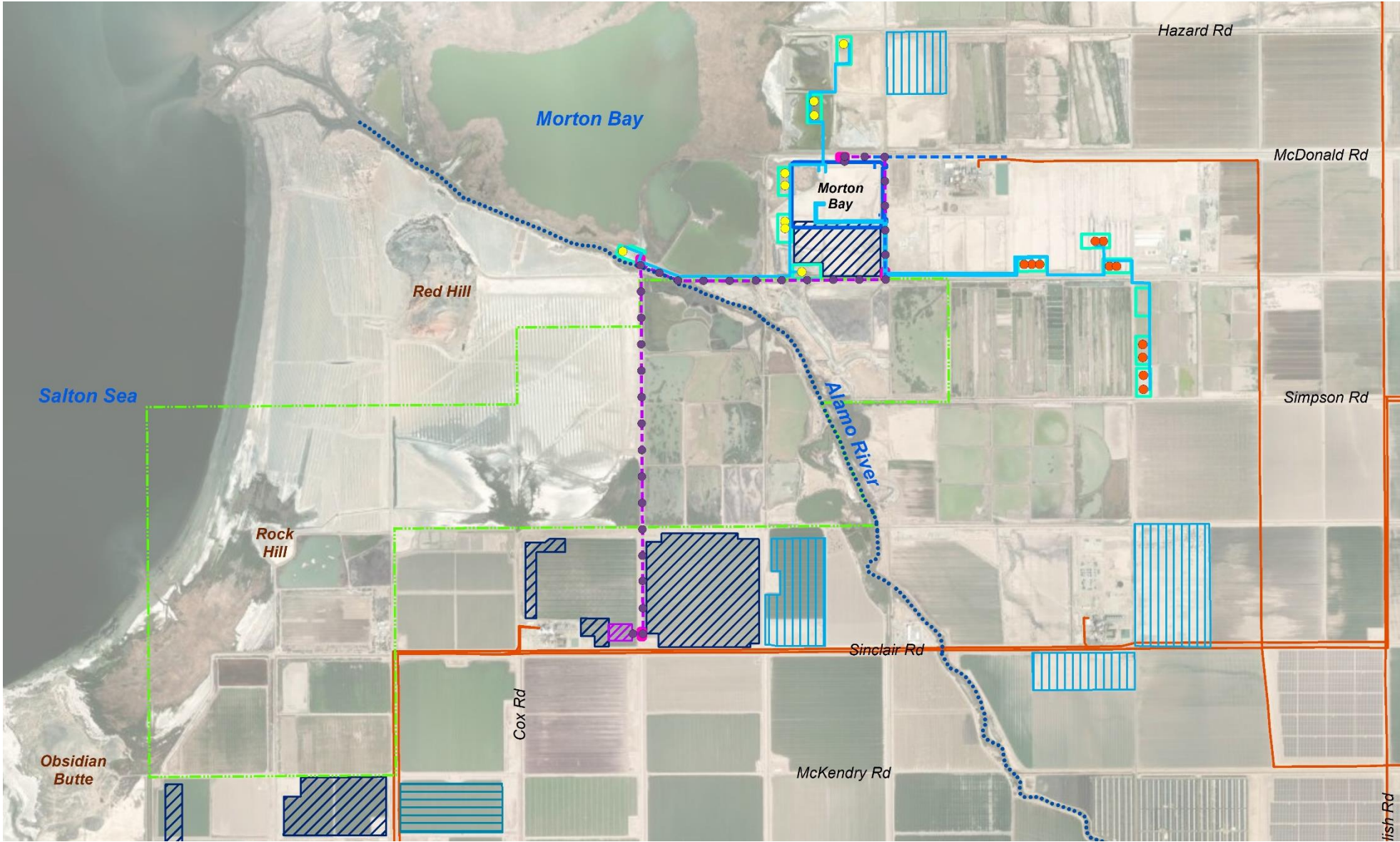
BLACK ROCK GEOTHERMAL PROJECT



ELMORE NORTH GEOTHERMAL PROJECT



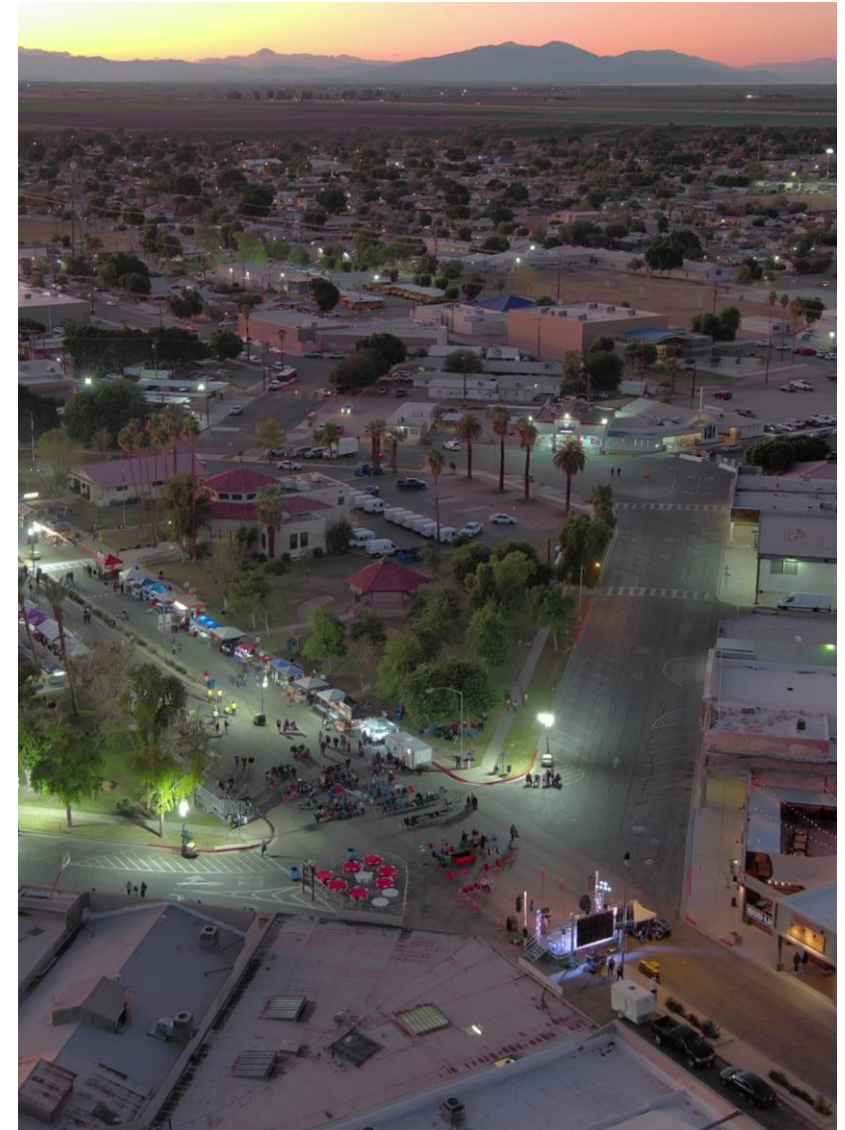
MORTON BAY GEOTHERMAL PROJECT



ECONOMIC BENEFITS OF PROPOSED PROJECTS

| Projected Construction Taxes | Black Rock | Elmore North | Morton Bay |
|------------------------------|------------|--------------|------------|
| Sales and Use Taxes | \$25m | \$40m | \$41m |
| Imperial County allocation | \$4m | \$6.5m | \$6.6m |
| Annual Operating Taxes | | | |
| Sales and Use Tax | \$891k | \$16m | \$16m |
| Imperial County allocation | \$201k | \$368k | \$368k |
| Property Taxes | \$5.9m | \$9.4m | \$9.4m |

- Imperial County spends approximately 80% of tax revenue on police and fire, health and sanitation and public assistance to support the community
- **Proposed Projects will power 265,000 homes**
- **Support local businesses**
- **More jobs per MW than other forms of generation**



WORKFORCE DEVELOPMENT

- Supporting development of regional workforce development programs, including Imperial Valley College's one-year certification and training programs for lab technicians, instrument technicians and plant operators
- Our goal is to primarily hire local residents of Imperial County and members of tribal nations

Imperial Valley Employment

| New Geothermal Projects | Total Employment |
|---------------------------|--------------------------------|
| Temporary Construction | ~1,600 (combined peak monthly) |
| Permanent BHER Operations | ~200 (full-time staff) |

- Opportunities for local contracting such as drilling and well maintenance, cleaning and seasonal outage support



COMMUNITY ENGAGEMENT



Committed to Being a Good Neighbor

- Over 2022 - 2023, BHE Renewables' and BHE Foundation's charitable investments and commitments in Imperial Valley to increase opportunities and quality of life in the region total over \$775k
- 2023 - employees and family members have volunteered over 300 hours
- MLK Day – three Little League fields
- Earth Day – planted a garden for WomanHaven



Economic Impact

- \$86.5 million paid in property taxes to Imperial County since 2008

Supporting Education

- BHE Renewables is an active partner with schools K-College and regularly participates in career days and classroom supply drives



Collaborating with Business

- BHE Renewables is engaged as a board member with many economic entities in the region including: Coalition for Labor, Agriculture, and Business, Imperial Valley Regional Chamber, Imperial Valley Economic Development Corporation, and Imperial County Workforce Development Board

2022 – 2023 ORGANIZATIONS SUPPORTED IN IMPERIAL COUNTY



- 45th District Ag Association
- American Legion Auxiliary Unit 135
- American Legion Post 60
- Amigos de Alejandro, Inc.
- Boys & Girls Club of Imperial Valley
- Brandt Company
- Brawley American Citizens Club
- Brawley ASB/BUHS Boy's Golf
- Brawley Cattle Call Rodeo Committee
- Brawley Chamber of Commerce
- Brawley Elks #1420
- Brawley Little League
- Brawley Union High School
- Brawley Wildcat Gridiron Club
- BUHS Football
- Burn Institute of Imperial Valley
- California Mid-Winter Fair & Fiesta
- Calipatria Chamber of Commerce
- Calipatria High School
- Calipatria Hornet Gridiron Club
- Calipatria Little League
- Calipatria PAL
- Calipatria Unified School District
- Calipatria School District Safety/Wellness Fair
- Cancer Resource Center of the Desert
- City of Brawley Dept. of Parks and Rec.
- Cody's Closet
- COLAB of Imperial County
- CHARLEE Family Care
- CUHS Robotics
- El Centro Chamber of Commerce
- El Centro Firefighters Association
- Elmer Sears Lettuce Tournament
- Forgotten Angels
- Fleet and Family Readiness – EC Navy Base
- Frankie L. Chavez Memorial Scholarship
- Friends of Meyer Memorial Library
- Forgotten Angels
- Geothermal Rising
- Holtville High School
- Humane Society of Imperial County
- Las Chabelas Restaurant – Bike Drive
- Los Amigos de la Comunidad
- Los Vigilantes
- Imperial County Farm Bureau
- Imperial County Office of Education
- Imperial School District
- Imperial Quarterback Club
- Imperial Valley-Opoly
- Imperial Valley 911 Stair Climb Committee
- Imperial Valley Cancer Support Center
- Imperial Valley College
- Imperial Valley Community Foundation
- Imperial Valley Economic Development
- Imperial Valley Expo - 45th D.A.A.
- Imperial Valley Food Bank
- Imperial Valley LGBT Resource Center
- Imperial Valley Press
- Imperial Valley Regional Chamber
- Imperial Valley Wellness Foundation
- IV Patriotic Planning Committee
- IV Regional Chamber Foundation
- MANA de Imperial Valley
- Meyer Memorial Library
- "NATE" Mata Memorial Scholarship
- National Child Safety Council
- Niland Food Pantry
- North County Coalition for the Arts
- North End Alliance 111
- Pioneers Memorial Hospital Foundation
- Ronald McDonald House
- Salton Sea Refuge
- Society of Hispanic Professional Engineer
- Soroptimist of El Centro
- Southwest High School
- Spears Hawaiian Shaved Ice
- Sport's Boosters Inc
- Spread the Love Charity
- Sure Helpline Crisis Center
- The Living Desert
- United Way of Imperial County
- Westmorland Food Pantry
- Wing USA
- Woman Haven

BECAUSE WE CARE



