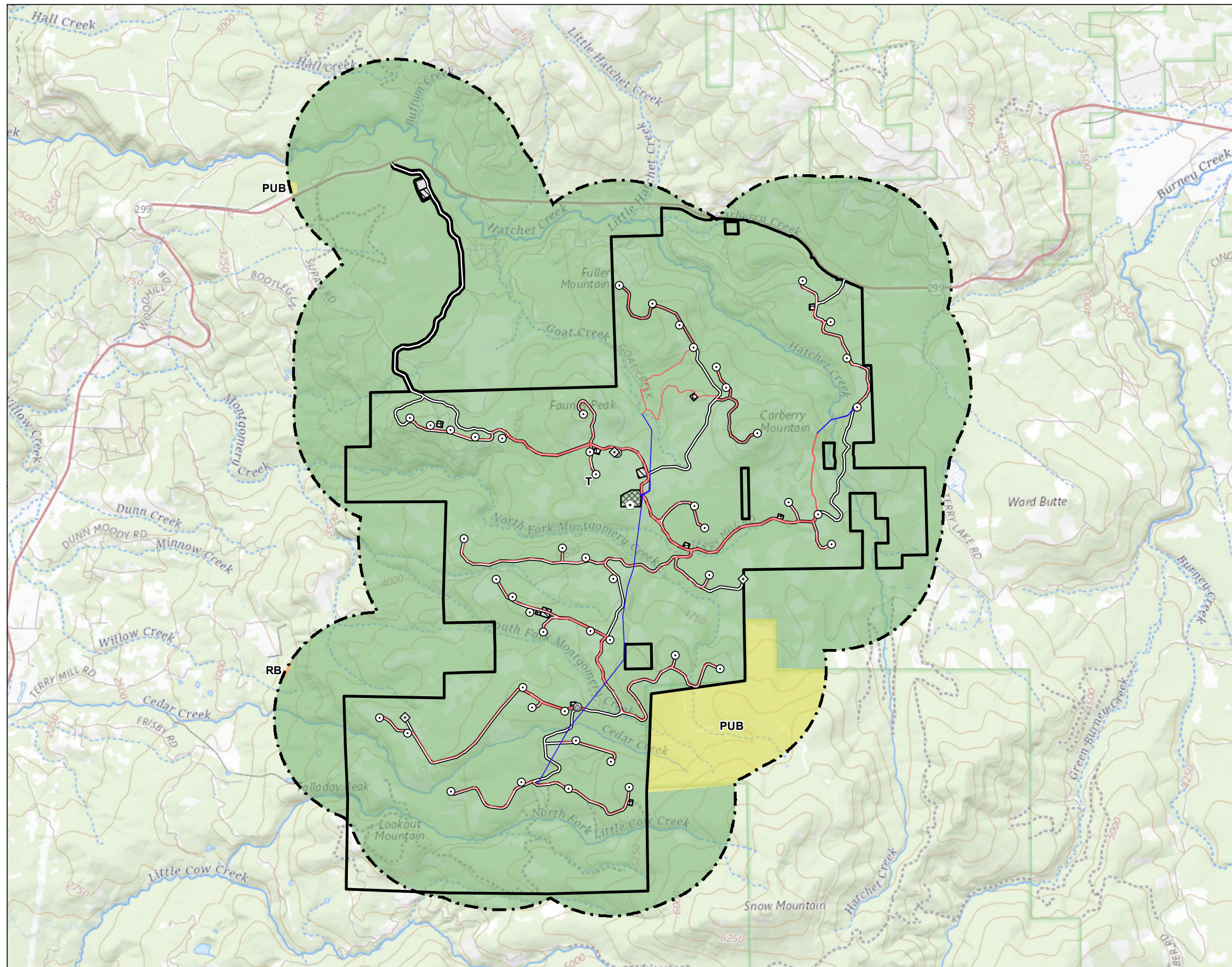


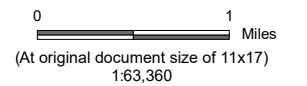
<b>DOCKETED</b>	
<b>Docket Number:</b>	23-OPT-01
<b>Project Title:</b>	Fountain Wind Project
<b>TN #:</b>	250283
<b>Document Title:</b>	LU-02_LandUse
<b>Description:</b>	N/A
<b>Filer:</b>	Caitlin Barns
<b>Organization:</b>	Stantec Consulting Services, Inc.
<b>Submitter Role:</b>	Applicant Consultant
<b>Submission Date:</b>	5/23/2023 4:13:58 PM
<b>Docketed Date:</b>	5/23/2023

V:\11950\active\Task\_Owner and other Non-BC1956\_Joist\1185703743\03\_data\gis\mxd\2023\LU-02\_LandUse.mxd Revised: 2023-05-18 By: gcarpentier



**Legend**

- Turbine Location
- ◇ Met Tower Location
- ⬠ Microwave Tower Location
- Storage Shed Location
- Overhead Collection
- Underground Collection
- Access Road
- ▨ Batch Plant
- ▭ O&M Facility
- ▩ Staging Area
- ▩ Substation/Switchyard Site
- ▭ Project Area
- ⌈ ⌋ 1 mile from the Project Site
- Shasta County General Plan Land Use
- Public Land (PUB)
- Rural Residential B (RB)
- Timber (T)



**Notes**

1. Coordinate System: NAD 1983 UTM Zone 10N
2. Data Sources: Shasta County GIS Division
3. Background: The USGS National Map



**Project Location**  
Shasta County  
California

Prepared by GC on 2023-04-14  
TR Review by DA on 2023-04-17  
IR Review by CB on 2023-04-18

**Client/Project**  
Fountain Wind LLC  
Fountain Wind Project

203723159

**Figure No.**

**LU-002; LU-006; LU2-02**

**Title**

**Land Use**