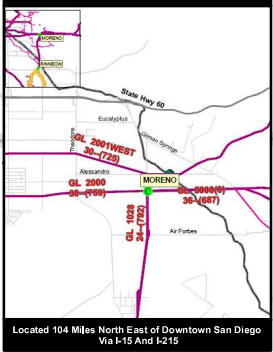


<b>DOCKETED</b>	
<b>Docket Number:</b>	23-IEPR-03
<b>Project Title:</b>	Electricity and Gas Demand Forecast
<b>TN #:</b>	250233
<b>Document Title:</b>	SDG&E System Map FERC 2022 Annual Report
<b>Description:</b>	N/A
<b>Filer:</b>	Adam Jorge
<b>Organization:</b>	SDG&E
<b>Submitter Role:</b>	Public
<b>Submission Date:</b>	5/19/2023 4:49:19 PM
<b>Docketed Date:</b>	5/19/2023

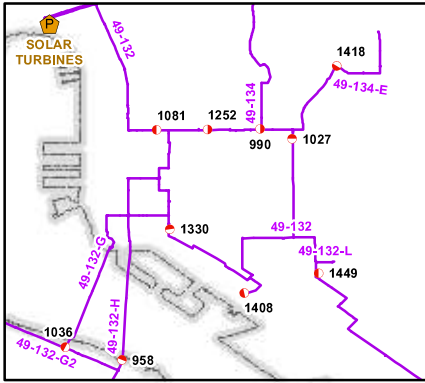
Orange County

Riverside County

Moreno Compressor Station



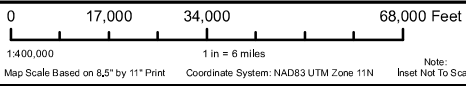
Pacific Ocean



**Legend**

- Natural Gas Power Plants
- Gate Stations
- Regulator Stations
- Compressor Stations
- SDG&E HP Supply Line
- SDG&E Transmission
- So. Cal. Gas Transmission

### SDG&E High Pressure Gas System - 2022



Created By: AGROCH  
 Phone: (658)547-2056  
 Email: AGroch@SDGE.com

Data Sources: SDG&E Gas GIS  
 Freeways: StreetMap Premium  
 Date: 2/22/2023

CONFIDENTIAL - FOR INTERNAL USE ONLY. NOT FOR PUBLIC REVIEW - UNAUTHORIZED DUPLICATION PROHIBITED.  
 This map is not survey grade, and SDGE makes no representations or warranties, whether expressed or implied, as to its accuracy, correctness, defensibility, completeness, or any other standard or measure of quality or adequacy or as to its use or intended use for any particular purpose. SDG&E disclaims all warranties, expressed or implied, including the warranty of fitness for a particular purpose. You are solely responsible for selecting this map to use and you are solely responsible for any consequences resulting from your use.  
 \*Certain technology used under license from AT&T Intellectual Property L.L.P. Copyright © 1998 - 2007 AT&T Intellectual Property L.L.P. All Rights Reserved.

Mexico