

DOCKETED	
Docket Number:	21-ESR-01
Project Title:	Energy System Reliability
TN #:	250188
Document Title:	State Water Project - SWP
Description:	4 - DWR - Presentation
Filer:	Xieng Saephan
Organization:	California Department of Water Resources
Submitter Role:	Public Agency
Submission Date:	5/16/2023 5:02:30 PM
Docketed Date:	5/17/2023

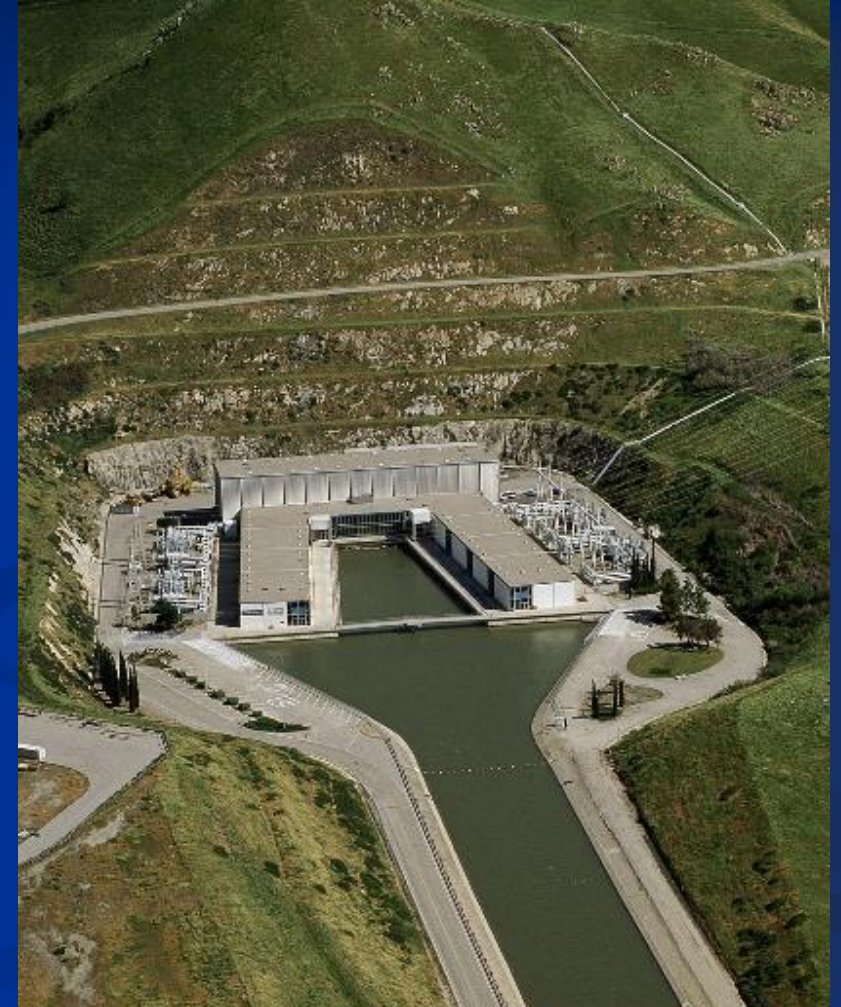


THE CALIFORNIA DEPARTMENT OF WATER RESOURCES STATE WATER PROJECT (SWP)



Agenda

- Brief overview of CDWR
- SWP 2023 System Outlook
- SWP Operations – Grid Emergency Objective





DWR MISSION

“To manage the water resources of California in cooperation with other agencies, to benefit the State's people, and to protect, restore, and enhance the natural and human environments.”



SWP Delivers Water

State Water Contractors

- Deliver to 29 water contractors (all are local public agencies)
- Irrigation to **750,000 acres** of crops
- SWP water is delivered to approximately **27 million** people throughout Northern, Central, and Southern California

SWP Water Deliveries

- Total water supply contracts of 4.2 Million AF
- Average SWC water delivery has been about 2.5 Million AF with an approximate distribution 75/25 split between urban use and agricultural use

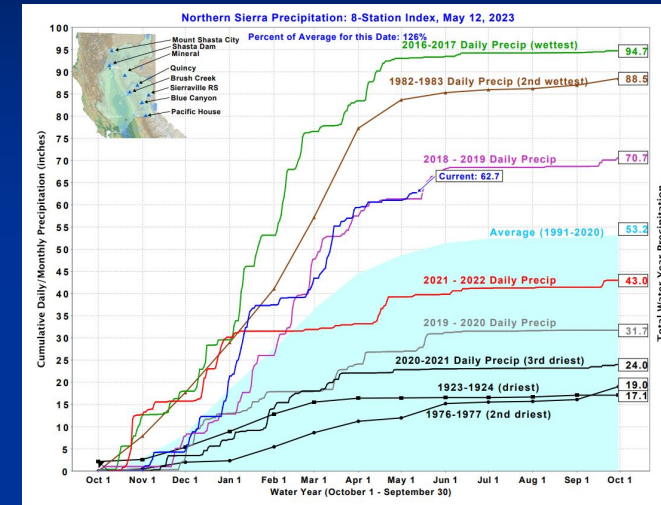
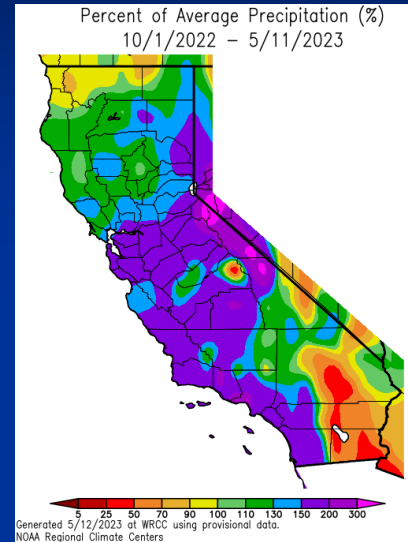


SWP PUMPING AND GENERATING

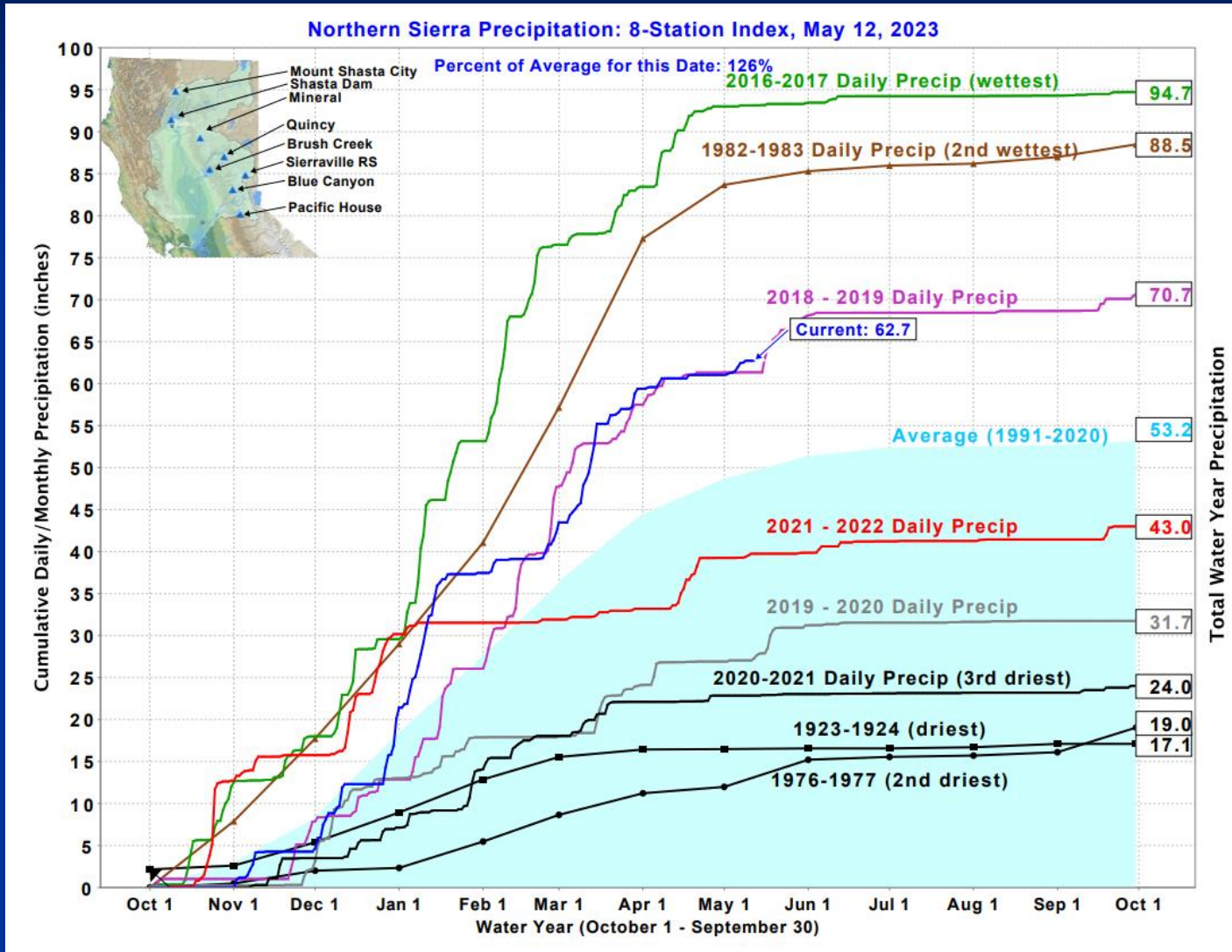


- SWP is the single largest power consumer in California.
 - Installed pumping capacity is approximately 2,600MW (highest peak load to date is approx. 2,200MW).
 - About 7,000 GWHr pump load to move water through out California each year
 - 40 to 60% of that power comes from SWP resources
- SWP is the fifth largest electrical utility in California.
 - Installed generation capacity about 1,700MW
 - Similar in size to SMUD (load), about 10% in size compared to PG&E, about 4% of CAISO load
 - Third largest generator of clean hydro power - about 14% of California's hydropower

SWP 2023 System Outlook

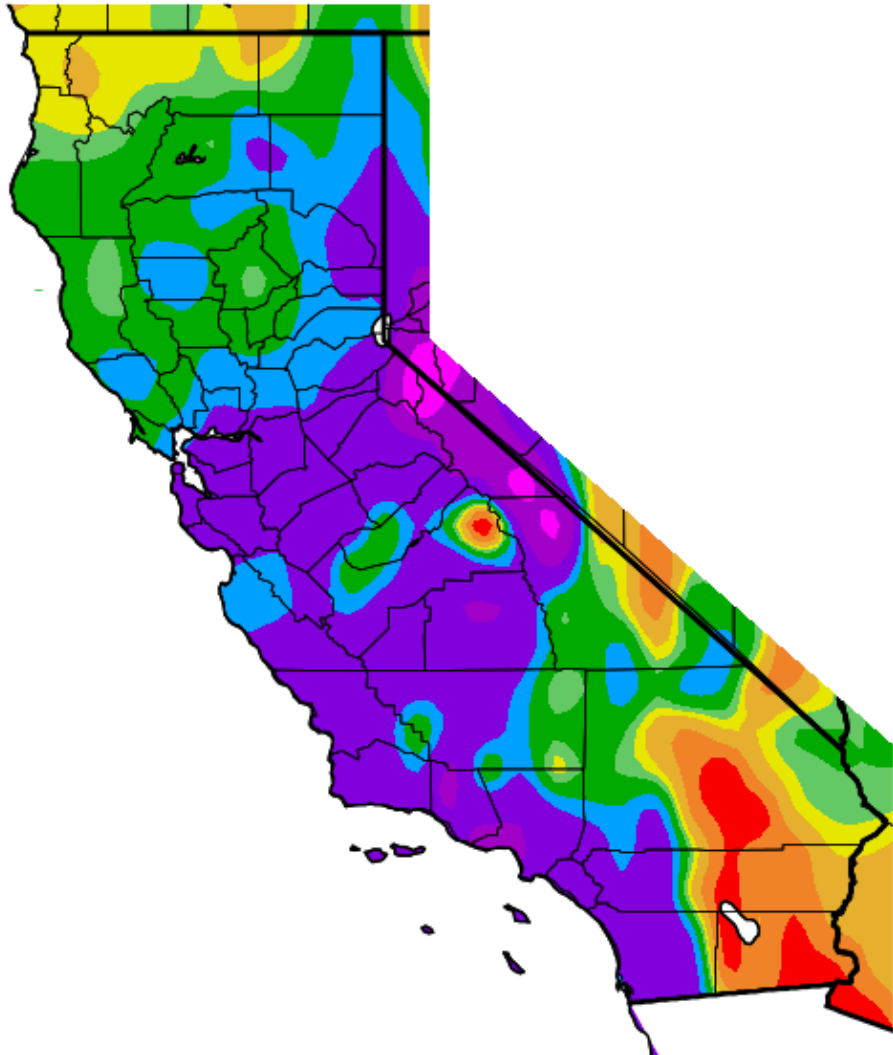


California 2023 Hydrology



- 2023 precipitation in Northern California
- Oct-Dec: Average
- Jan-April: Above Average

Percent of Average Precipitation (%)
10/1/2022 – 5/11/2023



Generated 5/12/2023 at WRCC using provisional data.
NOAA Regional Climate Centers

California 2023 Water Year

- Oct 2022 – May 2023
- 70% for most of CA
- +200% for central and coastal

SWP Operations – 2023 System Outlook

SWP System Generation & Pumping Load (MW)						
	2022 Actuals		2023 Forecast			
	Average		Lower Range		Upper Range	
<i>Summer Period</i>	<i>Gen</i>	<i>Pump</i>	<i>Gen</i>	<i>Pump</i>	<i>Gen</i>	<i>Pump</i>
	332	51	873	738	1374	1015

2023:

- 100% delivery of SWC water
- 4.17 Million AF

2022:

- 5% delivery of SWC water
- 0.219 Million AF

SWP Operations

Grid Emergency Objectives

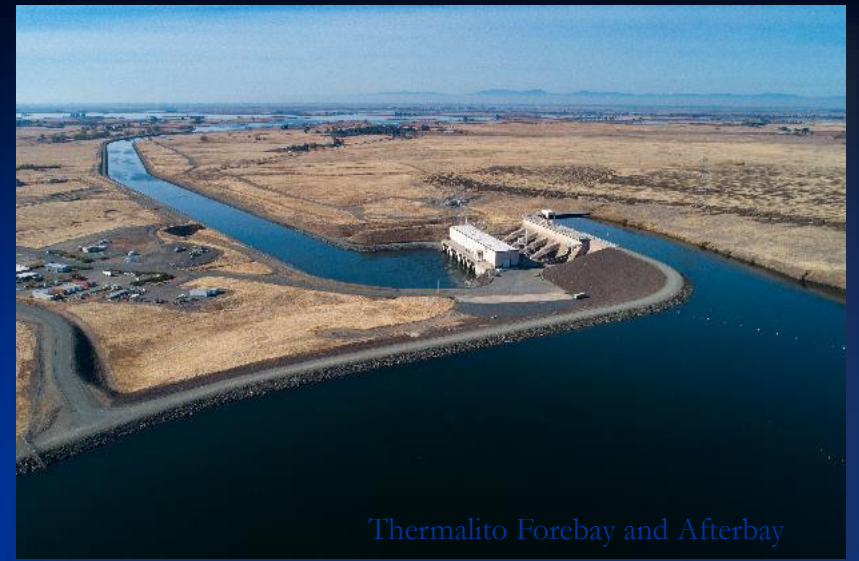
- Maintain compliance with all regulatory requirements
- Maintain water delivery to State Water Contractors (all are local public agencies)
- Insofar as possible consistent with SWP core mission assist California Independent System Operator (CAISO) with grid operations



Extreme Weather Events



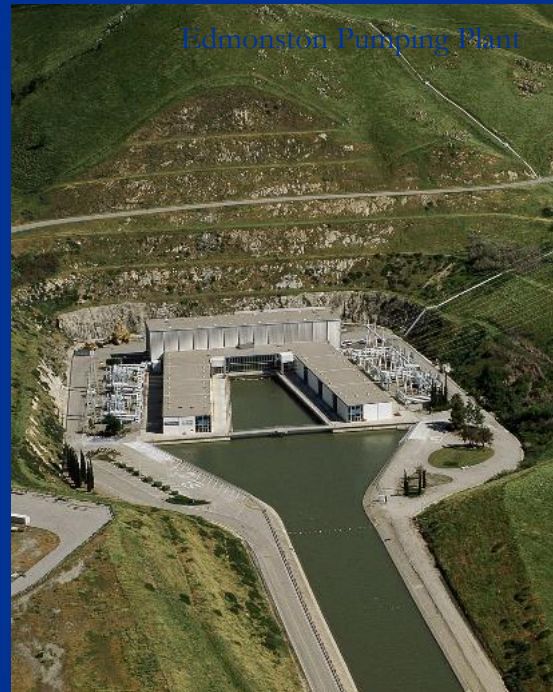
Banks Pumping Plant



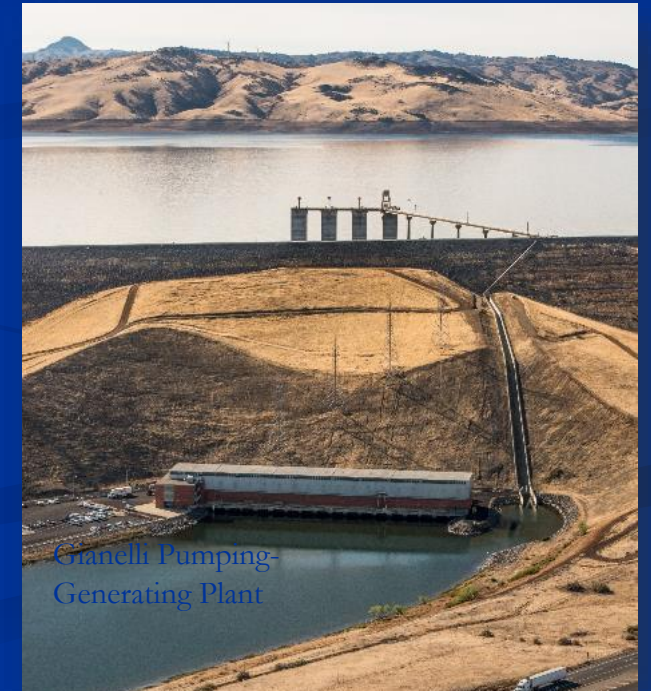
Thermalito Forebay and Afterbay



Devil Canyon 2nd Afterbay



Edmonston Pumping Plant



Gianelli Pumping-Generating Plant

SWP

