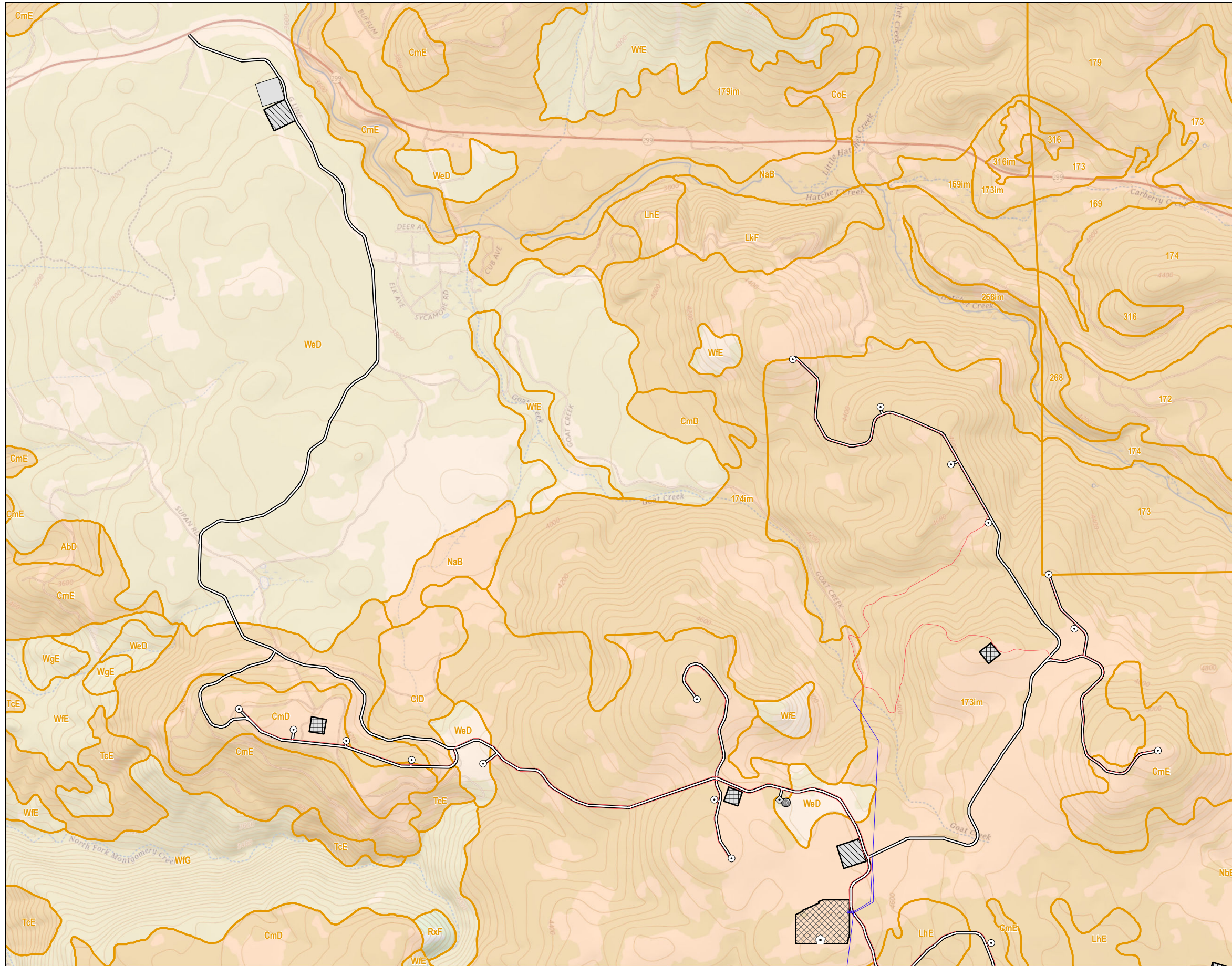


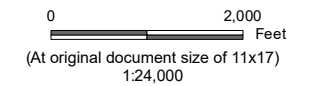
<b>DOCKETED</b>	
<b>Docket Number:</b>	23-OPT-01
<b>Project Title:</b>	Fountain Wind Project
<b>TN #:</b>	250139
<b>Document Title:</b>	SOILS-003_SoilsErodibility
<b>Description:</b>	updated figure; previous version contained upload error
<b>Filer:</b>	Caitlin Barns
<b>Organization:</b>	Stantec Consulting Services, Inc.
<b>Submitter Role:</b>	Applicant Consultant
<b>Submission Date:</b>	5/12/2023 1:40:30 PM
<b>Docketed Date:</b>	5/12/2023

V:\11950\active\Task\_Owner and other Non-BC1956\_Joist\185703743\03\_data\gis\cad\gis\mxd\2023\SOILS-003\_SoilErodibility.mxd Revised: 2023-05-05 By: garpentier



Legend

- Turbine Location
- ◇ Met Tower Location
- ⬠ Microwave Tower Location
- Storage Shed Location
- Overhead Collection
- Underground Collection
- Access Road
- ▨ Batch Plant
- O&M Facility
- ▩ Staging Area
- ▤ Substation/Switchyard Site
- ▭ SSURGO Soils Map Unit
- Soil Erosion K-Factor
  - 0.020 - 0.125
  - 0.126 - 0.250



Notes

1. Coordinate System: NAD 1983 UTM Zone 10N
2. Data Sources: Shasta County GIS Division, NRCS SSURGO Soils
3. Background: The USGS National Map



Project Location  
Shasta County  
California

Prepared by GC on 2023-05-05  
Reviewed by CB on 2023-05-05

Client/Project  
Fountain Wind LLC  
Fountain Wind Project

203723159

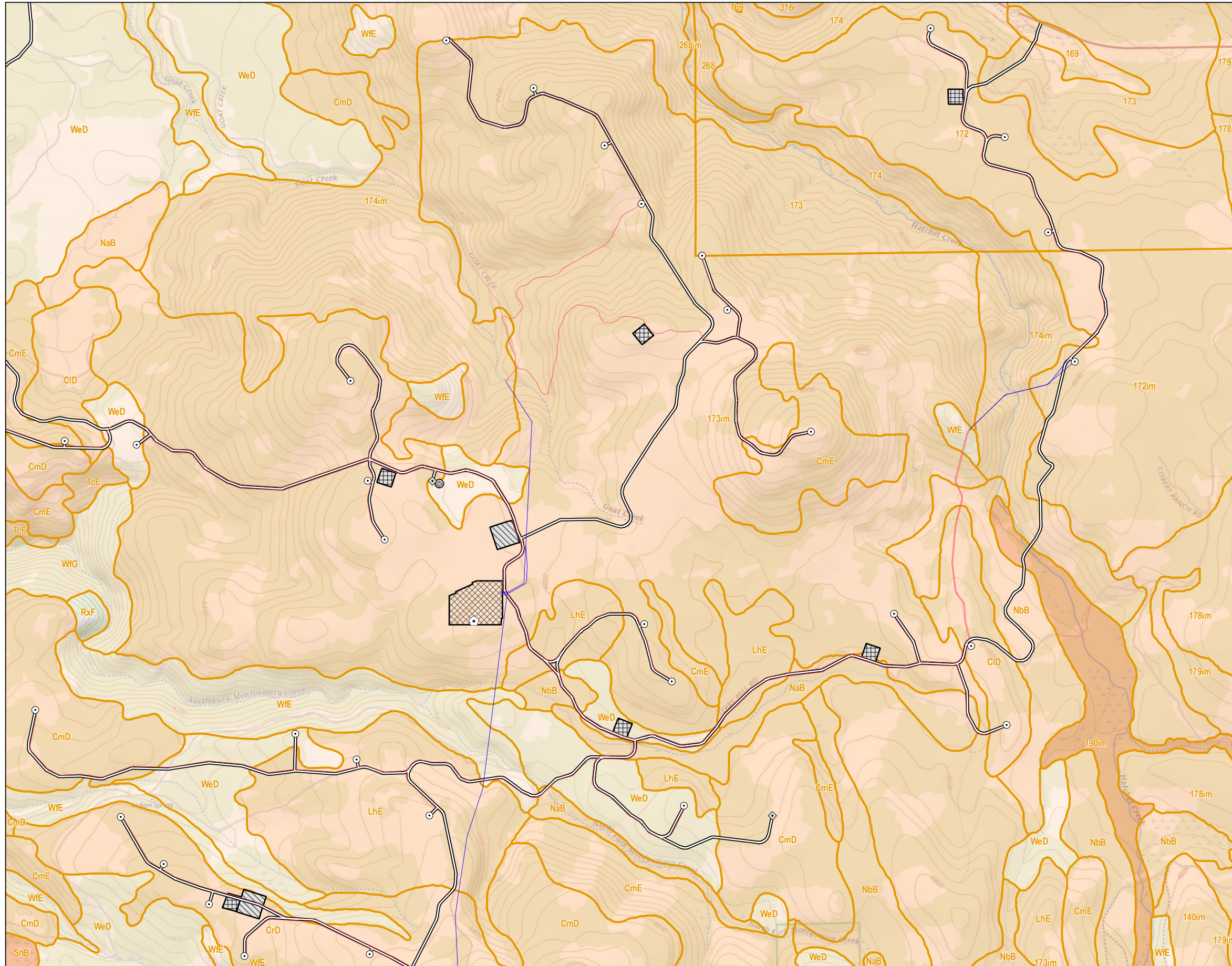
Figure No.

**SOILS-003**

Title

**Soil Erosion K-Factor  
Map 1 of 3**

V:\1195\active\Task\_Owner and other Non-BCI\956\_Joist\1195\703\743\03\_data\tagis\_cad\tagis\mxd\2023\SOILS-003\_SoilErodibility.mxd Revised: 2023-05-05 By: garpenfiter

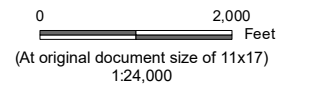


Legend

- Turbine Location
- ◇ Met Tower Location
- ⬠ Microwave Tower Location
- Storage Shed Location
- Overhead Collection
- Underground Collection
- Access Road
- ▨ Batch Plant
- ▭ O&M Facility
- ▧ Staging Area
- ▩ Substation/Switchyard Site
- ▭ SSURGO Soils Map Unit

Soil Erosion K-Factor

- 0.020 - 0.125
- 0.126 - 0.250
- 0.251 - 0.375



Notes

1. Coordinate System: NAD 1983 UTM Zone 10N
2. Data Sources: Shasta County GIS Division, NRCS SSURGO Soils
3. Background: The USGS National Map



Project Location  
Shasta County  
California

Prepared by GC on 2023-05-05  
Reviewed by CB on 2023-05-05

Client/Project  
Fountain Wind LLC  
Fountain Wind Project

203723159

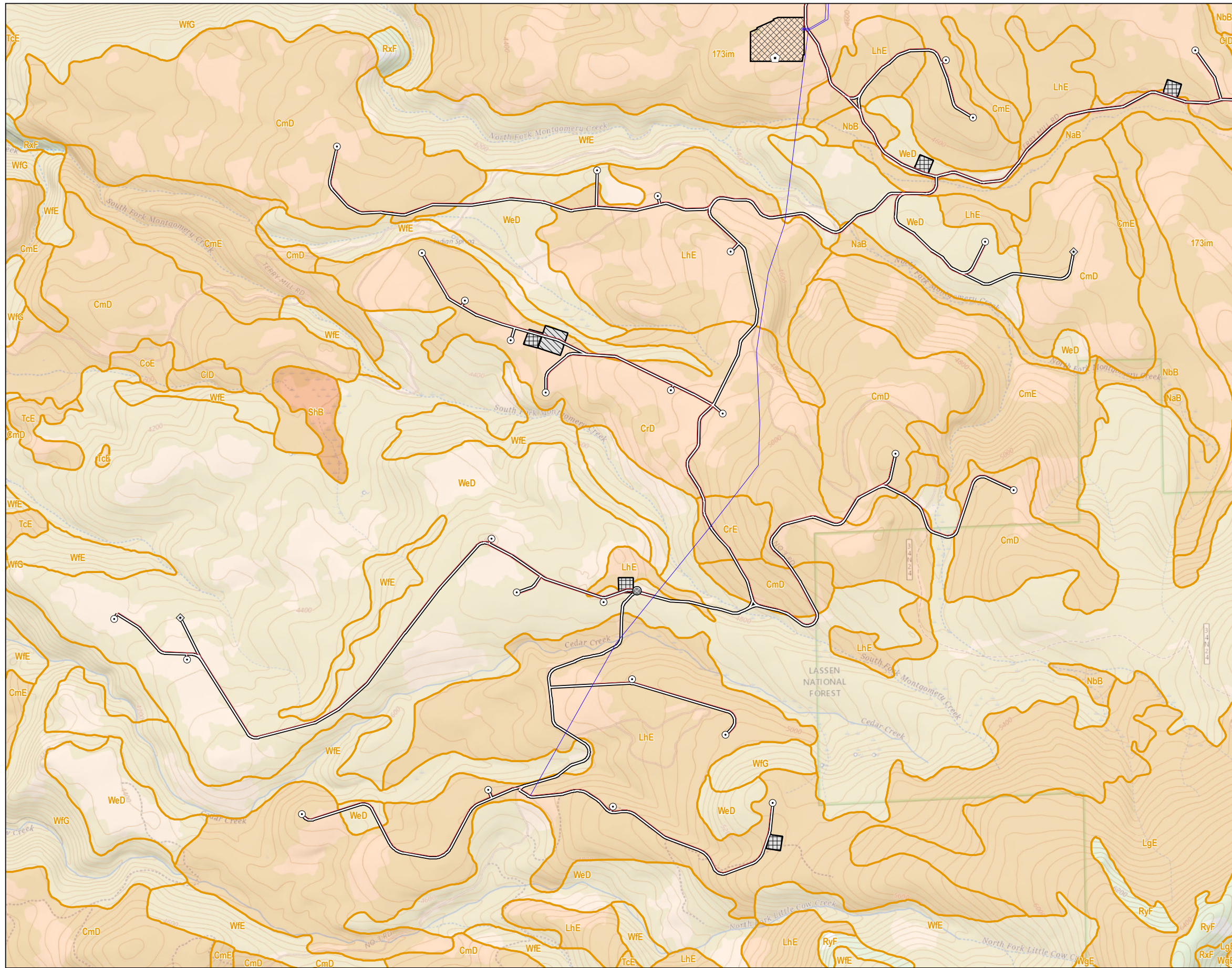
Figure No.

**SOILS-003**

Title

**Soil Erosion K-Factor  
Map 2 of 3**

V:\11950\active\Task\_Owner and other Non-BC1956\_Joist\1195703743\03\_data\tag\cad\gis\mxd\2023\SOILS-003\_SoilErodibility.mxd Revised: 2023-05-05 By: garpentier

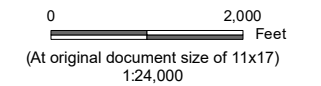


Legend

- Turbine Location
- ◇ Met Tower Location
- ⬠ Microwave Tower Location
- Storage Shed Location
- Overhead Collection
- Underground Collection
- Access Road
- ▨ Batch Plant
- ▭ O&M Facility
- ▩ Staging Area
- ▩ Substation/Switchyard Site
- ▭ SSURGO Soils Map Unit

Soil Erosion K-Factor

- 0.020 - 0.125
- 0.126 - 0.250
- 0.251 - 0.375



Notes

1. Coordinate System: NAD 1983 UTM Zone 10N
2. Data Sources: Shasta County GIS Division, NRCS SSURGO Soils
3. Background: The USGS National Map



Project Location  
Shasta County  
California

Prepared by GC on 2023-05-05  
Reviewed by CB on 2023-05-05

Client/Project  
Fountain Wind LLC  
Fountain Wind Project

203723159

Figure No.

**SOILS-003**

Title

**Soil Erosion K-Factor  
Map 3 of 3**