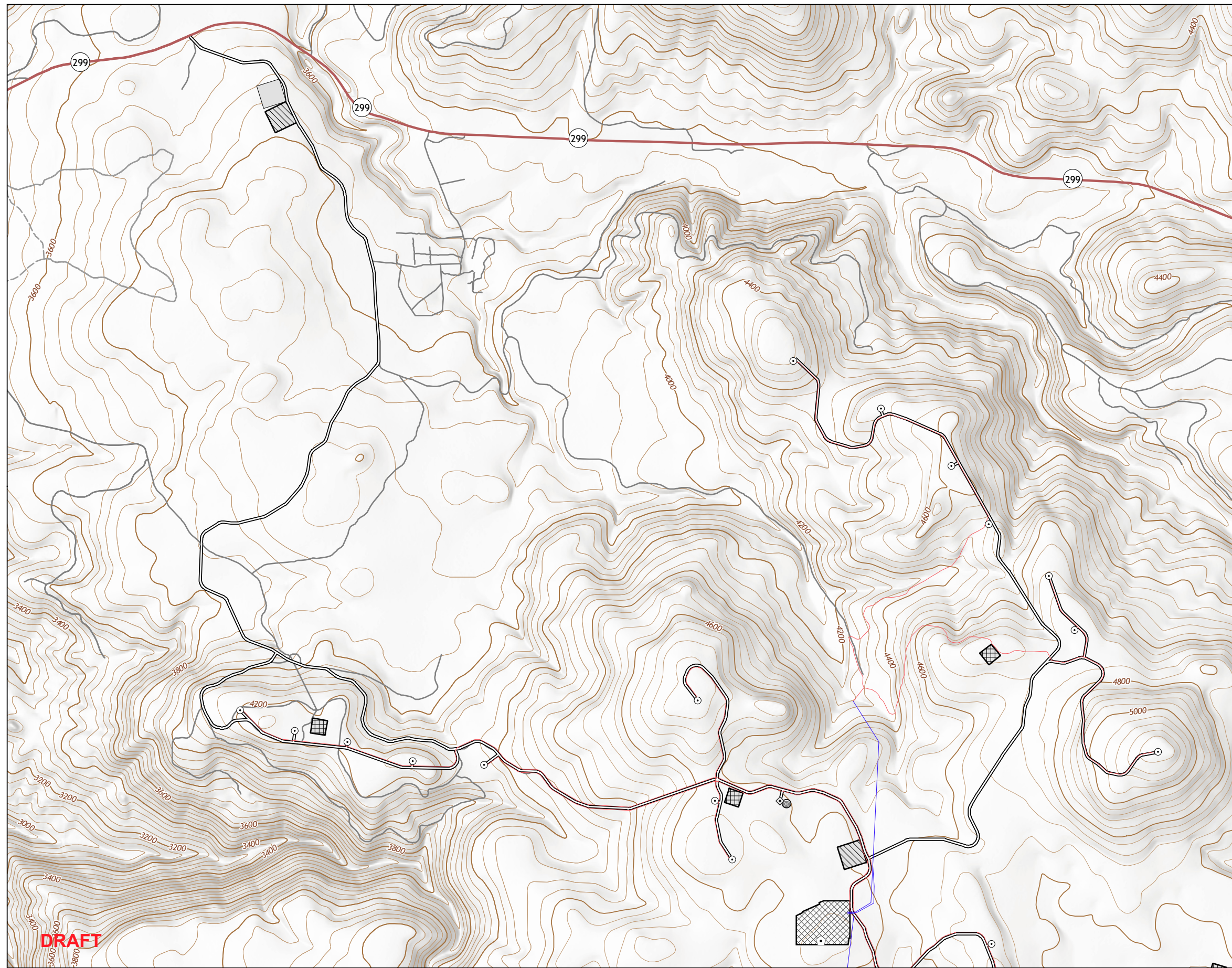


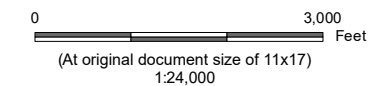
DOCKETED	
Docket Number:	23-OPT-01
Project Title:	Fountain Wind Project
TN #:	250057
Document Title:	PO-015_ProjectTopo
Description:	N/A
Filer:	Caitlin Barns
Organization:	Stantec Consulting Services, Inc.
Submitter Role:	Applicant Consultant
Submission Date:	5/8/2023 3:01:36 PM
Docketed Date:	5/8/2023

V:\11959\active\Task_Owner and other Non-BCI\956_Joia\1185703743\03_data\gis\mxd\2023\PO-015_Project\topo.mxd Revised: 2023-05-04 By: gcarpentier



Legend

- Turbine Location
- ◇ Met Tower Location
- ⬠ Microwave Tower Location
- Storage Shed Location
- Overhead Collection
- Underground Collection
- Access Road
- ▨ Batch Plant
- ▭ O&M Facility
- ▩ Staging Area
- ▩ Substation/Switchyard Site
- 20' Contour
- 100' Contour
- Secondary Highway
- Local Road
- 4WD Road/Trail



Notes

1. Coordinate System: NAD 1983 UTM Zone 10N
2. Data Sources: Shasta County GIS Division
3. Background: The USGS Topo Map Vector Data



Project Location
Shasta County
California

Prepared by GC on 2023-05-04
TR Review by DA on 2023-05-05
IR Review by CB on 2023-05-05

Client/Project
Fountain Wind LLC
Fountain Wind Project

203723159

Figure No.

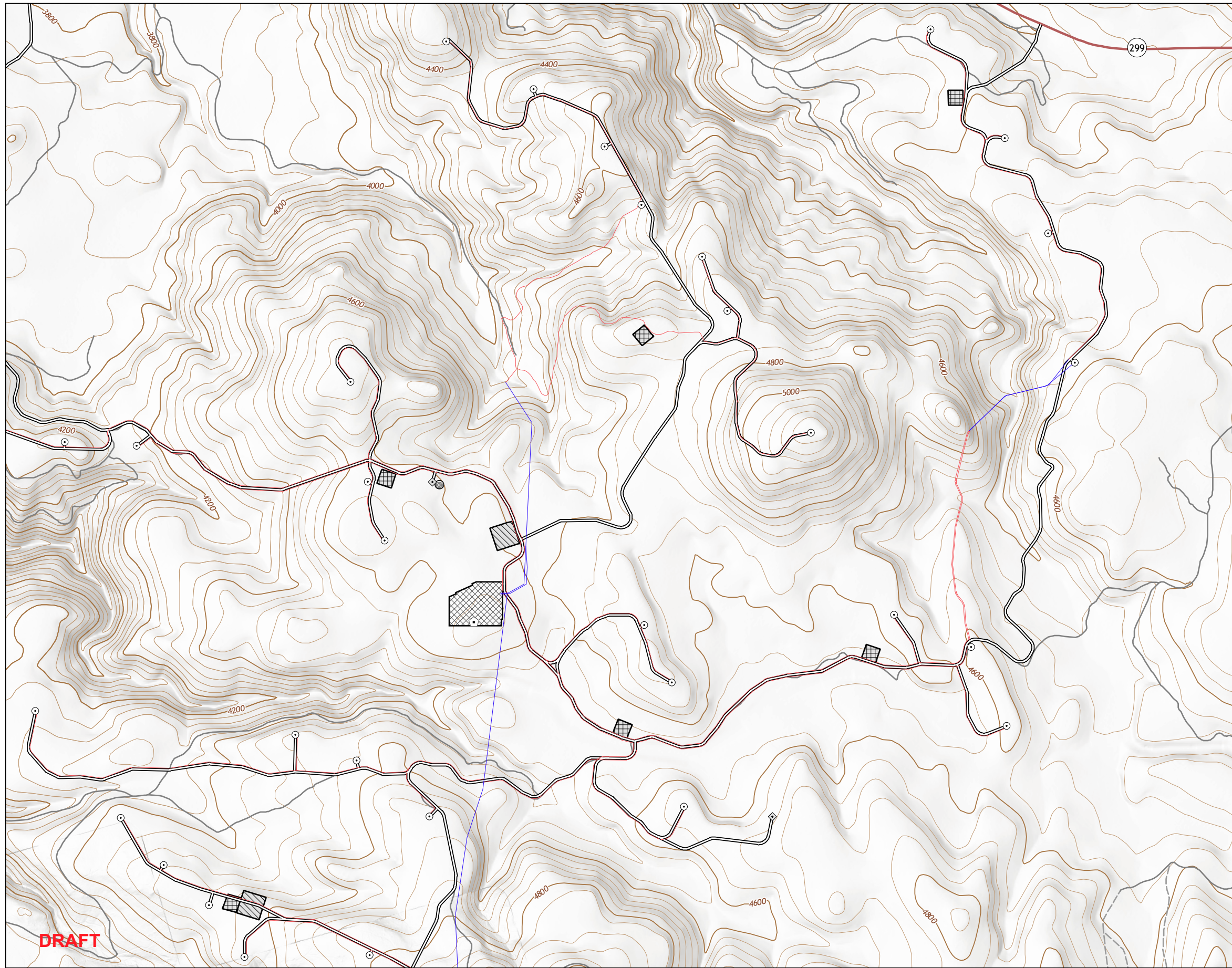
PO-015

DRAFT

Title

**Project Overview
Map 1 of 3**

V:\1959\active\Task_Owner and other Non-BC1956_Joia\185703743\03_data\gis\cad\gis\mxd\2023\PO-015_Project\topo.mxd Revised: 2023-05-04 By: gcarpentier

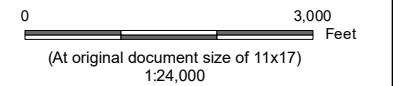


DRAFT



Legend

- Turbine Location
- ◇ Met Tower Location
- △ Microwave Tower Location
- Storage Shed Location
- Overhead Collection
- Underground Collection
- Access Road
- ▨ Batch Plant
- ▭ O&M Facility
- ▩ Staging Area
- ▤ Substation/Switchyard Site
- 20' Contour
- 100' Contour
- Secondary Highway
- Local Road
- - 4WD Road/Trail



Notes

1. Coordinate System: NAD 1983 UTM Zone 10N
2. Data Sources: Shasta County GIS Division
3. Background: The USGS Topo Map Vector Data



Project Location
Shasta County
California

Prepared by GC on 2023-05-04
TR Review by DA on 2023-05-05
IR Review by CB on 2023-05-05

Client/Project
Fountain Wind LLC
Fountain Wind Project

203723159

Figure No.

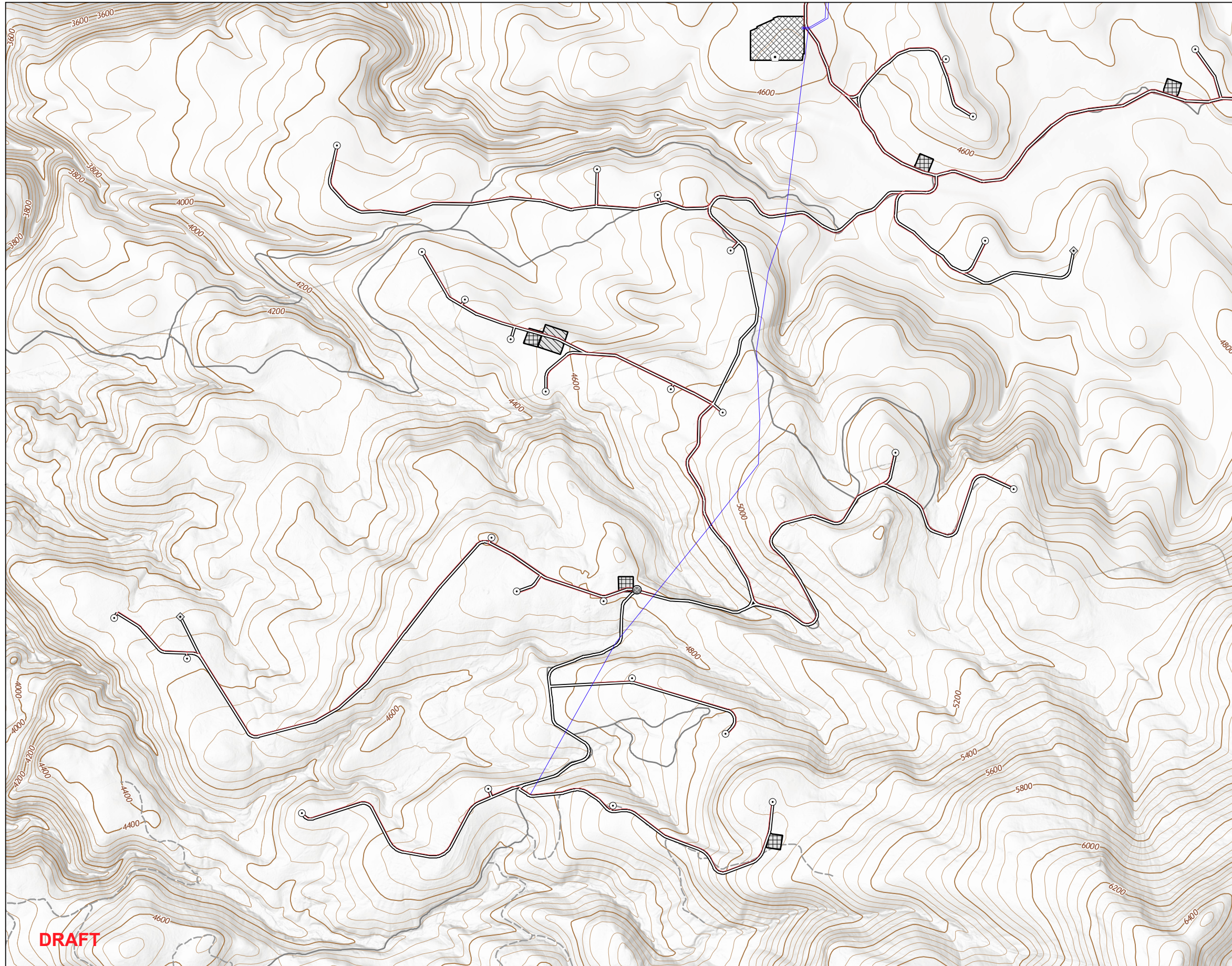
PO-015

DRAFT

Title

**Project Overview
Map 2 of 3**

V:\11959\active\Task_Owner and other Non-BC1956_Joia\1185703743\03_data\tagis_cad\tagis\mxd\2023\PO-015_ProjectTopo.mxd Revised: 2023-05-04 By: gcarpentier

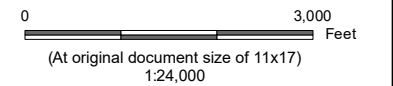


DRAFT



Legend

- Turbine Location
- ◇ Met Tower Location
- ⬠ Microwave Tower Location
- Storage Shed Location
- Overhead Collection
- Underground Collection
- Access Road
- ▨ Batch Plant
- ▭ O&M Facility
- ▩ Staging Area
- ▤ Substation/Switchyard Site
- 20' Contour
- 100' Contour
- Secondary Highway
- Local Road
- 4WD Road/Trail



Notes

1. Coordinate System: NAD 1983 UTM Zone 10N
2. Data Sources: Shasta County GIS Division
3. Background: The USGS Topo Map Vector Data



Project Location
Shasta County
California

Prepared by GC on 2023-05-04
TR Review by DA on 2023-05-05
IR Review by CB on 2023-05-05

Client/Project
Fountain Wind LLC
Fountain Wind Project

203723159

Figure No.

PO-015

DRAFT

Title

**Project Overview
Map 3 of 3**