

<b>DOCKETED</b>	
<b>Docket Number:</b>	23-OPT-01
<b>Project Title:</b>	Fountain Wind Project
<b>TN #:</b>	248329-7
<b>Document Title:</b>	LSAA Figure 2 Aquatic Impacts
<b>Description:</b>	N/A
<b>Filer:</b>	Caitlin Barns
<b>Organization:</b>	Stantec Consulting Services, Inc.
<b>Submitter Role:</b>	Applicant Consultant
<b>Submission Date:</b>	1/5/2023 9:49:25 AM
<b>Docketed Date:</b>	1/5/2023

\\js0241\pp\ss01\workgroup\1956\active\Task\_Owner and other Non-BC\1956\_Job\185703743\03\_data\gis\_cad\gis\mxd\WaterAssessment\2020\185604576\_02\_ProjectComponents\_and\_AquaticImpacts\_11x17\_10.7.mxd Revised: 2021-05-13 By: hurner



**Legend**

Study Area: 4,464 acres

# Crossing Location Identifier

**Resource Impact Type**

- Permanent Impact (fill)
- Permanent Vegetation Clearing
- Temporary Disturbance (no fill)
- No Impact

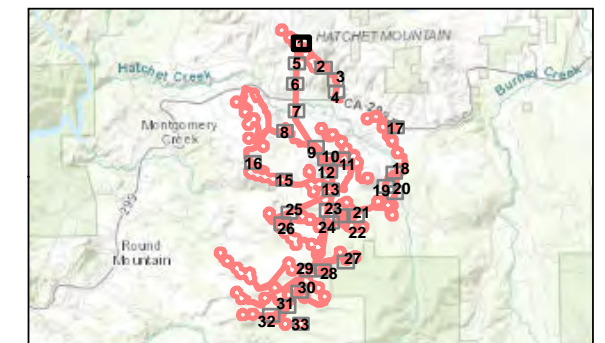
**Project Components and Disturbance Areas**

- Turbine (with structure number)
- Met Towers
- Operations and Maintenance Facility
- Laydown Yard/Staging Area
- Batch Plants
- Substation
- Permanent Impervious Disturbance
- Permanent Disturbance
- Temporary Disturbance



0 200 Feet  
(At original document size of 11x17)  
1:2,400

**Notes**  
1. Coordinate System: NAD 1983 UTM Zone 10N  
2. Background: ESRI World Imagery



**Project Location**  
Shasta County  
California

Prepared by KWH on 2020-08-24  
TR by SC on 2020-11-13

**Client/Project**  
ConnectGen  
Fountain Wind Energy

185704576

**Figure No.**  
2

**Title**  
Project Components and Potential Impacts to Waters

\\js0241-ppl\ss01\workgroup\1956\active\Task Owner and other Non-BC\1856\Joba\1857\0743\03\_data\gis\_cad\gis\mxd\WaterAssessment\2020\185604576\_02\_ProjectComponents\_and\_AquaticImpacts\_11x17\_10.7.mxd Revised: 2021-05-13 By: hurner



**Legend**

- Study Area: 4,464 acres
- # Crossing Location Identifier

**Resource Impact Type**

- Permanent Impact (fill)
- Permanent Vegetation Clearing
- Temporary Disturbance (no fill)
- No Impact

**Project Components and Disturbance Areas**

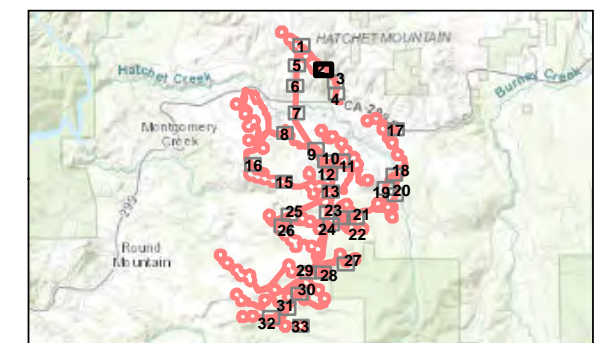
- Turbine (with structure number)
- Met Towers
- Operations and Maintenance Facility
- Laydown Yard/Staging Area
- Batch Plants
- Substation
- Permanent Impervious Disturbance
- Permanent Disturbance
- Temporary Disturbance



0 200 Feet  
 (At original document size of 11x17)  
 1:2,400

**Notes**

1. Coordinate System: NAD 1983 UTM Zone 10N
2. Background: ESRI World Imagery



**Project Location**  
 Shasta County  
 California

Prepared by KWH on 2020-08-24  
 TR by SC on 2020-11-13

**Client/Project**  
 ConnectGen  
 Fountain Wind Energy

185704576

**Figure No.**

**2**

**Title**

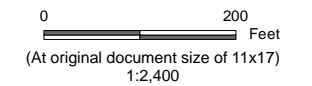
**Project Components and Potential Impacts to Waters**

\\js0241-ppl\ss01\workgroup\1956\active\Task Owner and other Non-BC\1956\Joba\185703743\03\_data\gis\_cad\gis\mxd\WaterAssessment\2020\185604576\_02\_ProjectComponents\_and\_AquaticImpacts\_11x17\_10.7.mxd Revised: 2021-05-13 By: hurner

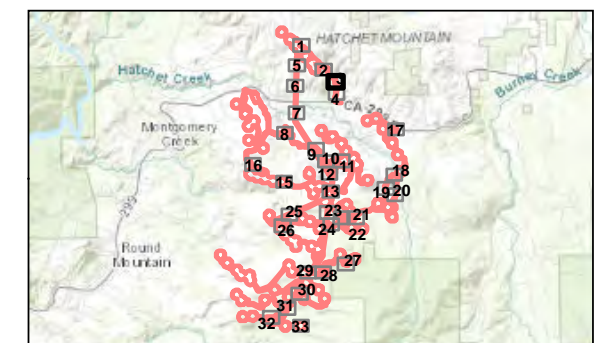


**Legend**

- Study Area: 4,464 acres
- # Crossing Location Identifier
- Resource Impact Type**
- Permanent Impact (fill)
- Permanent Vegetation Clearing
- Temporary Disturbance (no fill)
- No Impact
- Project Components and Disturbance Areas**
- Turbine (with structure number)
- Met Towers
- Operations and Maintenance Facility
- Laydown Yard/Staging Area
- Batch Plants
- Substation
- Permanent Impervious Disturbance
- Permanent Disturbance
- Temporary Disturbance



- Notes**
1. Coordinate System: NAD 1983 UTM Zone 10N
  2. Background: ESRI World Imagery



**Project Location**  
Shasta County  
California

Prepared by KWH on 2020-08-24  
TR by SC on 2020-11-13

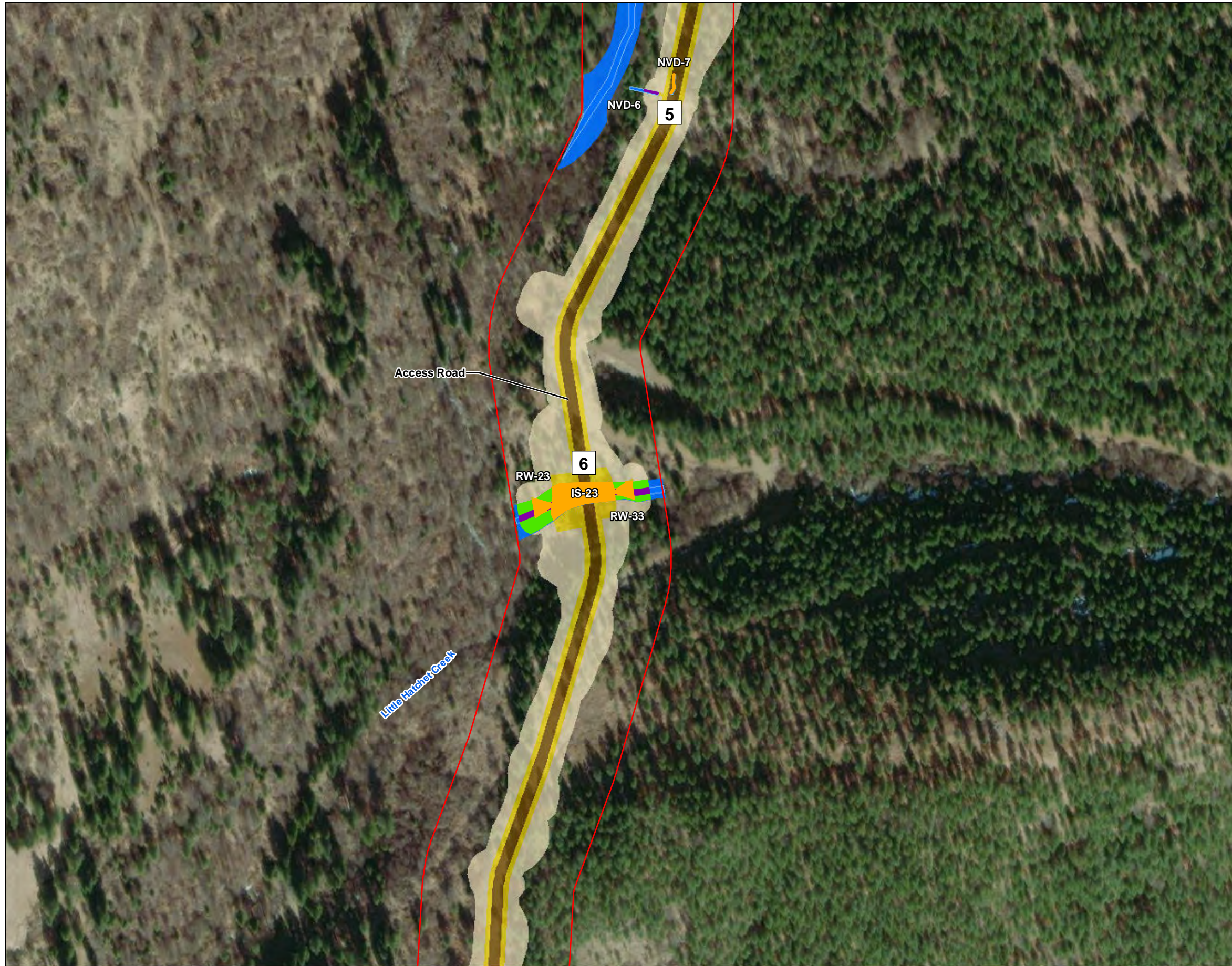
**Client/Project**  
ConnectGen  
Fountain Wind Energy

185704576

**Figure No.**  
**2**

**Title**  
**Project Components and Potential Impacts to Waters**

\\js0241\pp\ss01\workgroup\1956\active\Task Owner and other Non-BC\1956\Joba\185703743\03\_data\gis\_cad\gis\mxd\WaterAssessment\2020\185604576\_02\_ProjectComponents\_and\_AquaticImpacts\_11x17\_10.7.mxd Revised: 2021-05-13 By: hurner



**Legend**

Study Area: 4,464 acres

# Crossing Location Identifier

**Resource Impact Type**

- Permanent Impact (fill)
- Permanent Vegetation Clearing
- Temporary Disturbance (no fill)
- No Impact

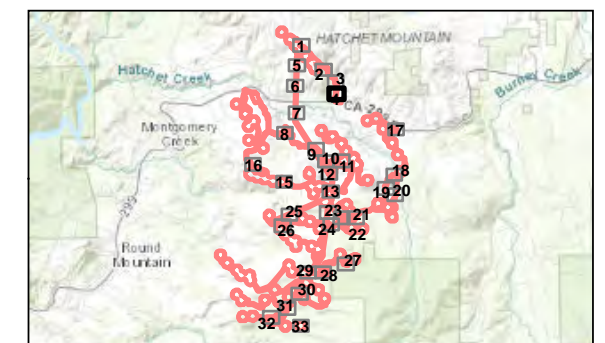
**Project Components and Disturbance Areas**

- Turbine (with structure number)
- Met Towers
- Operations and Maintenance Facility
- Laydown Yard/Staging Area
- Batch Plants
- Substation
- Permanent Impervious Disturbance
- Permanent Disturbance
- Temporary Disturbance



0 200 Feet  
 (At original document size of 11x17)  
 1:2,400

- Notes**
1. Coordinate System: NAD 1983 UTM Zone 10N
  2. Background: ESRI World Imagery



**Project Location**  
 Shasta County  
 California

Prepared by KWH on 2020-08-24  
 TR by SC on 2020-11-13

**Client/Project**  
 ConnectGen  
 Fountain Wind Energy

185704576

**Figure No.**

**2**

**Title**

**Project Components and Potential Impacts to Waters**

\\js0241\ppt\ss01\workgroup\1956\active\Task Owner and other Non-BC\1856\Joba\185703743\03\_data\gis\_cad\gis\mxd\WaterAssessment\2020\185604576\_02\_ProjectComponents\_and\_AquaticImpacts\_11x17\_10.7.mxd Revised: 2021-05-13 By: hurner



**Legend**

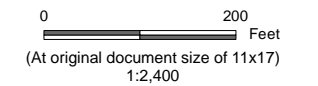
- Study Area: 4,464 acres
- # Crossing Location Identifier

**Resource Impact Type**

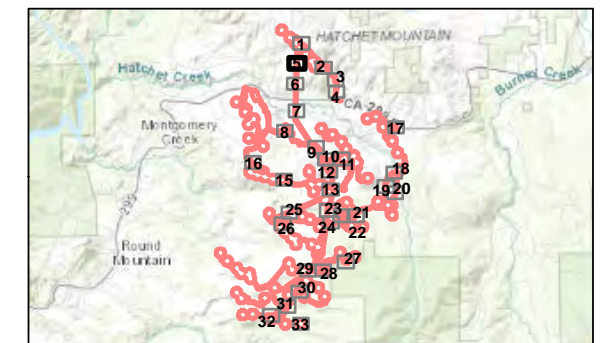
- Permanent Impact (fill)
- Permanent Vegetation Clearing
- Temporary Disturbance (no fill)
- No Impact

**Project Components and Disturbance Areas**

- Turbine (with structure number)
- Met Towers
- Operations and Maintenance Facility
- Laydown Yard/Staging Area
- Batch Plants
- Substation
- Permanent Impervious Disturbance
- Permanent Disturbance
- Temporary Disturbance



- Notes**
1. Coordinate System: NAD 1983 UTM Zone 10N
  2. Background: ESRI World Imagery



**Project Location**  
Shasta County  
California

Prepared by KWH on 2020-08-24  
TR by SC on 2020-11-13

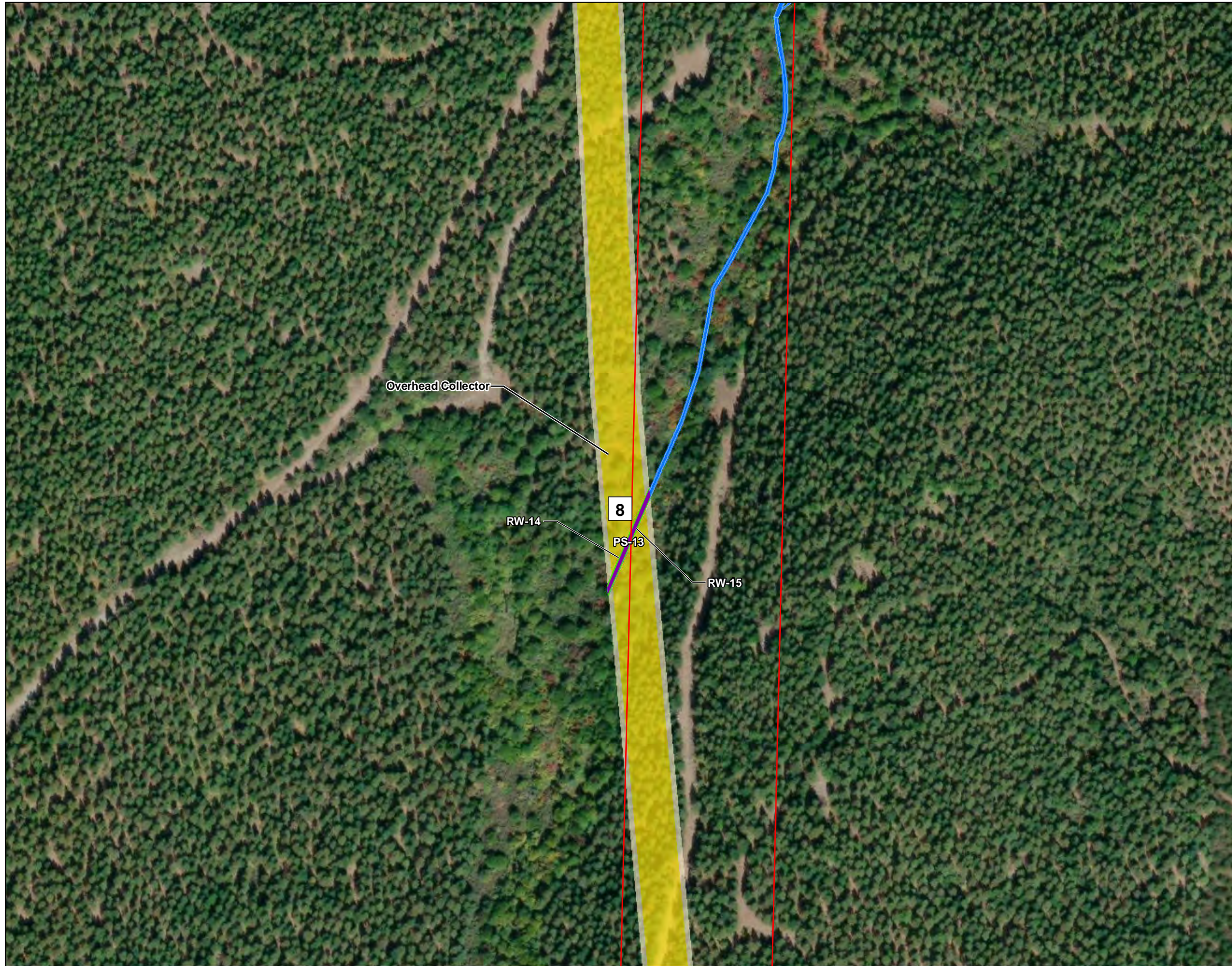
**Client/Project**  
ConnectGen  
Fountain Wind Energy

185704576

**Figure No.**  
**2**

**Title**  
**Project Components and Potential Impacts to Waters**

\\js0241-ppl\ss01\workgroup\1956\active\Task Owner and other Non-BC\1856\Joba\185703743\03\_data\gis\_cad\gis\mxd\WaterAssessment\2020\185604576\_02\_ProjectComponents\_and\_AquaticImpacts\_11x17\_10.7.mxd Revised: 2021-05-13 By: hurner



**Legend**

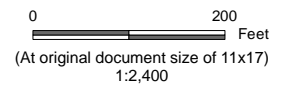
- Study Area: 4,464 acres
- # Crossing Location Identifier

**Resource Impact Type**

- Permanent Impact (fill)
- Permanent Vegetation Clearing
- Temporary Disturbance (no fill)
- No Impact

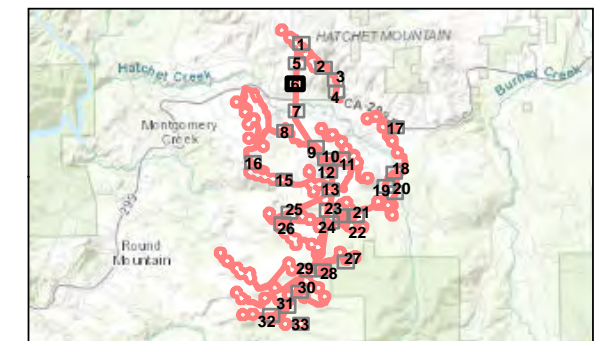
**Project Components and Disturbance Areas**

- Turbine (with structure number)
- Met Towers
- Operations and Maintenance Facility
- Laydown Yard/Staging Area
- Batch Plants
- Substation
- Permanent Impervious Disturbance
- Permanent Disturbance
- Temporary Disturbance



**Notes**

1. Coordinate System: NAD 1983 UTM Zone 10N
2. Background: ESRI World Imagery



**Project Location**  
Shasta County  
California

Prepared by KWH on 2020-08-24  
TR by SC on 2020-11-13

**Client/Project**  
ConnectGen  
Fountain Wind Energy

185704576

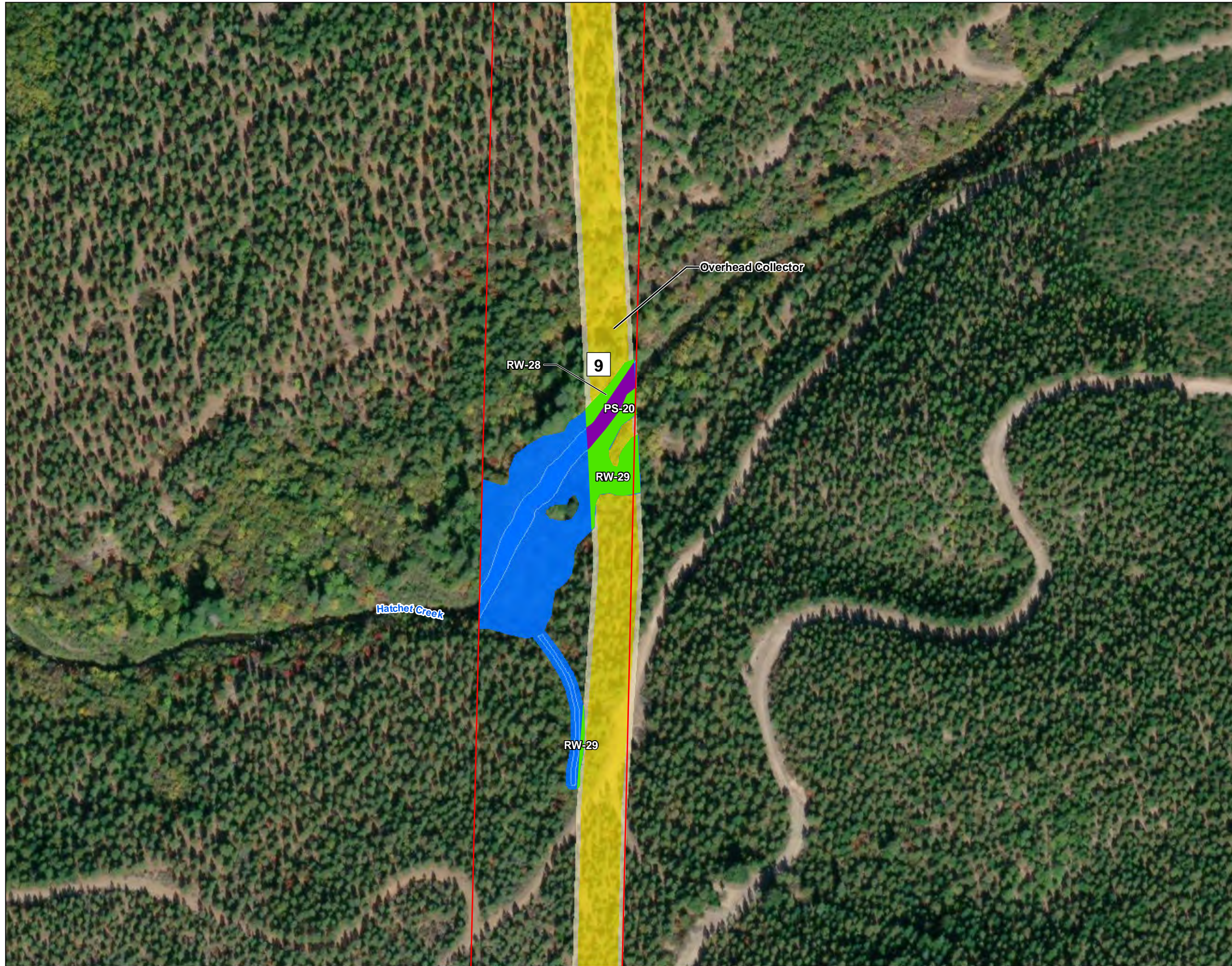
**Figure No.**

**2**

**Title**

**Project Components and Potential Impacts to Waters**

\\js0241-ppl\ss01\workgroup\1956\active\Task\_Owner and other Non-BC\1856\_Job\1857\0743\03\_data\gis\_cad\gis\mxd\WaterAssessment\2020\185604576\_02\_ProjectComponents\_and\_AquaticImpacts\_11x17\_10.7.mxd Revised: 2021-05-13 By: hurner



**Legend**

Study Area: 4,464 acres

# Crossing Location Identifier

**Resource Impact Type**

- Permanent Impact (fill)
- Permanent Vegetation Clearing
- Temporary Disturbance (no fill)
- No Impact

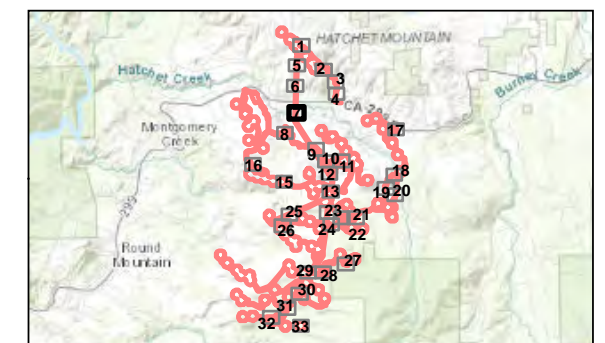
**Project Components and Disturbance Areas**

- Turbine (with structure number)
- Met Towers
- Operations and Maintenance Facility
- Laydown Yard/Staging Area
- Batch Plants
- Substation
- Permanent Impervious Disturbance
- Permanent Disturbance
- Temporary Disturbance



0 200 Feet  
 (At original document size of 11x17)  
 1:2,400

- Notes**
1. Coordinate System: NAD 1983 UTM Zone 10N
  2. Background: ESRI World Imagery



**Project Location**  
 Shasta County  
 California

Prepared by KWH on 2020-08-24  
 TR by SC on 2020-11-13

**Client/Project**  
 ConnectGen  
 Fountain Wind Energy

185704576

Figure No.

**2**

Title

**Project Components and Potential Impacts to Waters**



\\js0241\ppt\ss01\workgroup\1956\active\Task Owner and other Non-BC\1856\Job\1857\03743\03\_data\gis\_cad\gis\mxd\WaterAssessment\2020\185604576\_02\_ProjectComponents\_and\_AquaticImpacts\_11x17\_10.7.mxd Revised: 2021-05-13 By: hurner



**Legend**

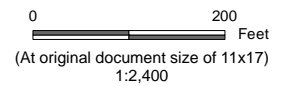
- Study Area: 4,464 acres
- # Crossing Location Identifier

**Resource Impact Type**

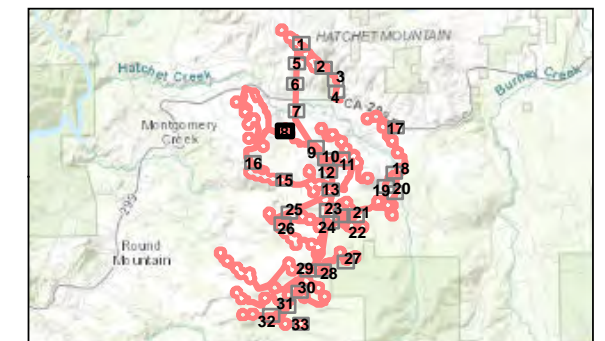
- Permanent Impact (fill)
- Permanent Vegetation Clearing
- Temporary Disturbance (no fill)
- No Impact

**Project Components and Disturbance Areas**

- Turbine (with structure number)
- Met Towers
- Operations and Maintenance Facility
- Laydown Yard/Staging Area
- Batch Plants
- Substation
- Permanent Impervious Disturbance
- Permanent Disturbance
- Temporary Disturbance



- Notes**
1. Coordinate System: NAD 1983 UTM Zone 10N
  2. Background: ESRI World Imagery



**Project Location**  
Shasta County  
California

Prepared by KWH on 2020-08-24  
TR by SC on 2020-11-13

**Client/Project**  
ConnectGen  
Fountain Wind Energy

185704576

**Figure No.**  
2

**Title**  
Project Components and Potential Impacts to Waters

\\js0241\pp\ss01\workgroup\1956\active\Task\_Owner and other Non-BC\1856\Joba\1857\0743\03\_data\gis\_cad\gis\mxd\WaterAssessment\2020\185604576\_02\_ProjectComponents\_and\_AquaticImpacts\_11x17\_10.7.mxd Revised: 2021-05-13 By: hurner



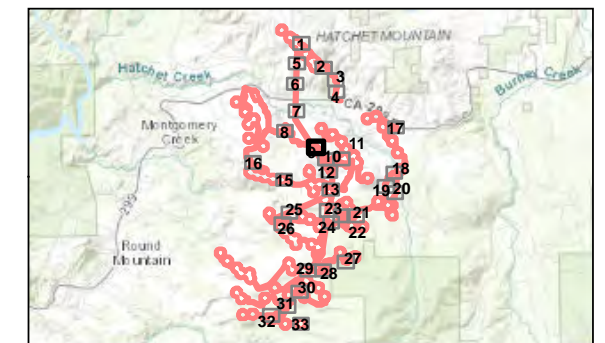
**Legend**

- Study Area: 4,464 acres
- # Crossing Location Identifier
- Resource Impact Type**
- Permanent Impact (fill)
- Permanent Vegetation Clearing
- Temporary Disturbance (no fill)
- No Impact
- Project Components and Disturbance Areas**
- Turbine (with structure number)
- Met Towers
- Operations and Maintenance Facility
- ▨ Laydown Yard/Staging Area
- ▩ Batch Plants
- ⊞ Substation
- Permanent Impervious Disturbance
- Permanent Disturbance
- Temporary Disturbance



0 200 Feet  
 (At original document size of 11x17)  
 1:2,400

- Notes**
1. Coordinate System: NAD 1983 UTM Zone 10N
  2. Background: ESRI World Imagery



**Project Location**  
 Shasta County  
 California

Prepared by KWH on 2020-08-24  
 TR by SC on 2020-11-13

**Client/Project**  
 ConnectGen  
 Fountain Wind Energy

185704576

**Figure No.**  
 2

**Title**  
 Project Components and Potential Impacts to Waters

\\js0241-ppl\ss01\workgroup\1956\active\Task Owner and other Non-BC\1856\Joba185703743\03\_data\gis\_cad\gis\mxd\WaterAssessment2020\185604576\_02\_ProjectComponents\_and\_AquaticImpacts\_11x17\_10.7.mxd Revised: 2021-05-13 By: hurner



**Legend**

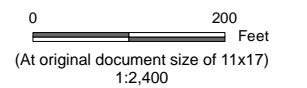
- Study Area: 4,464 acres
- # Crossing Location Identifier

**Resource Impact Type**

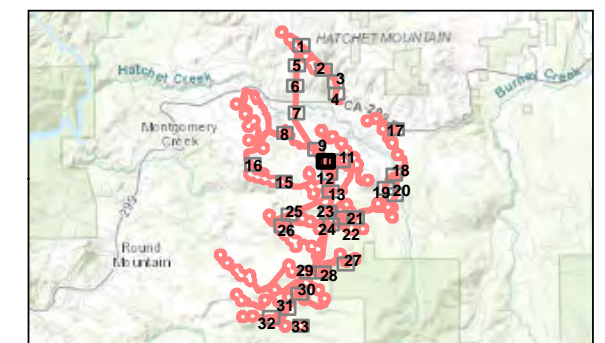
- Permanent Impact (fill)
- Permanent Vegetation Clearing
- Temporary Disturbance (no fill)
- No Impact

**Project Components and Disturbance Areas**

- Turbine (with structure number)
- Met Towers
- Operations and Maintenance Facility
- Laydown Yard/Staging Area
- Batch Plants
- Substation
- Permanent Impervious Disturbance
- Permanent Disturbance
- Temporary Disturbance



- Notes**
1. Coordinate System: NAD 1983 UTM Zone 10N
  2. Background: ESRI World Imagery



**Project Location**  
Shasta County  
California

Prepared by KWH on 2020-08-24  
TR by SC on 2020-11-13

**Client/Project**  
ConnectGen  
Fountain Wind Energy

185704576

**Figure No.**  
**2**

**Title**  
**Project Components and Potential Impacts to Waters**

\\js0241-ppl\ss01\workgroup\1956\active\Task Owner and other Non-BC\1856\Job\1857\0743\03\_data\gis\_cad\gis\mxd\WaterAssessment\2020\185604576\_02\_ProjectComponents\_and\_AquaticImpacts\_11x17\_10.7.mxd Revised: 2021-05-13 By: hurner



**Legend**

[Red outline] Study Area: 4,464 acres

[#] Crossing Location Identifier

**Resource Impact Type**

[Orange] Permanent Impact (fill)

[Green] Permanent Vegetation Clearing

[Purple] Temporary Disturbance (no fill)

[Blue] No Impact

**Project Components and Disturbance Areas**

[Circle with number] Turbine (with structure number)

[Diamond] Met Towers

[Rectangle with diagonal lines] Operations and Maintenance Facility

[Rectangle with horizontal lines] Laydown Yard/Staging Area

[Rectangle with vertical lines] Batch Plants

[Square with dots] Substation

[Brown shaded area] Permanent Impervious Disturbance

[Yellow shaded area] Permanent Disturbance

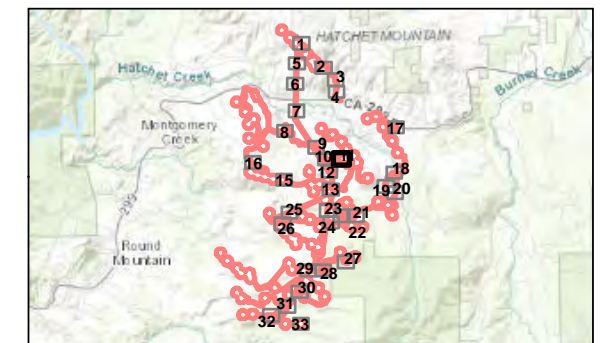
[Light yellow shaded area] Temporary Disturbance



0 200 Feet  
(At original document size of 11x17)  
1:2,400

**Notes**

- 1. Coordinate System: NAD 1983 UTM Zone 10N
- 2. Background: ESRI World Imagery



**Project Location**  
Shasta County  
California

Prepared by KWH on 2020-08-24  
TR by SC on 2020-11-13

**Client/Project**  
ConnectGen  
Fountain Wind Energy

185704576

**Figure No.**

**2**

**Title**

**Project Components and Potential Impacts to Waters**

\\js0241\pp\ss01\workgroup\1956\active\Task\_Owner and other Non-BC\1956\_Job\185703743\03\_data\gis\_cad\gis\mxd\WaterAssessment\2020\185604576\_02\_ProjectComponents\_and\_AquaticImpacts\_11x17\_10.7.mxd Revised: 2021-05-13 By: hurner



**Legend**

- [Red outline] Study Area: 4,464 acres
- [#] Crossing Location Identifier

**Resource Impact Type**

- [Orange fill] Permanent Impact (fill)
- [Green fill] Permanent Vegetation Clearing
- [Purple fill] Temporary Disturbance (no fill)
- [Blue fill] No Impact

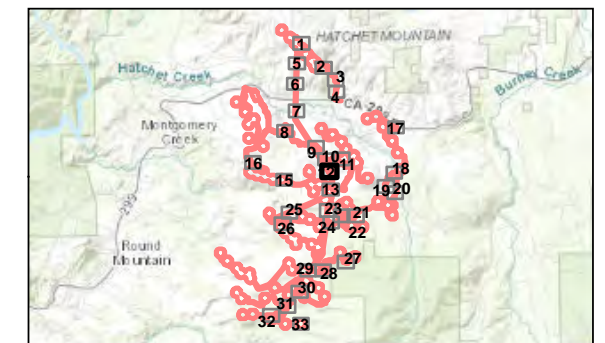
**Project Components and Disturbance Areas**

- [Circle with number] Turbine (with structure number)
- [Diamond] Met Towers
- [Rectangle with horizontal lines] Operations and Maintenance Facility
- [Rectangle with diagonal lines] Laydown Yard/Staging Area
- [Rectangle with vertical lines] Batch Plants
- [Rectangle with grid pattern] Substation
- [Brown fill] Permanent Impervious Disturbance
- [Yellow fill] Permanent Disturbance
- [Light yellow fill] Temporary Disturbance



0 200 Feet  
(At original document size of 11x17)  
1:2,400

- Notes**
- Coordinate System: NAD 1983 UTM Zone 10N
  - Background: ESRI World Imagery



**Project Location**  
Shasta County  
California

Prepared by KWH on 2020-08-24  
TR by SC on 2020-11-13

**Client/Project**  
ConnectGen  
Fountain Wind Energy

185704576

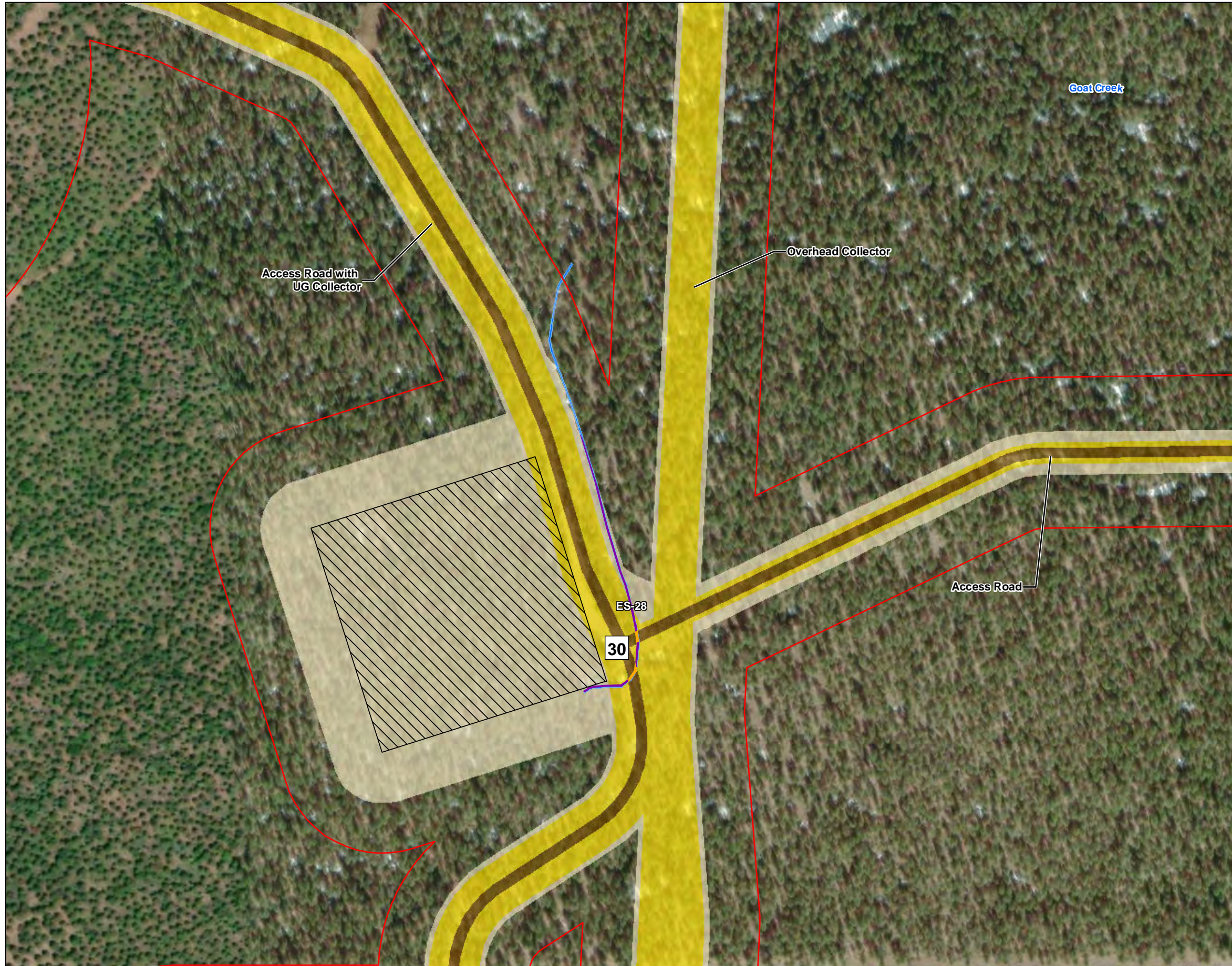
**Figure No.**

**2**

**Title**

**Project Components and Potential Impacts to Waters**

\\js0241\pp\ss01\workgroup\1956\active\Task Owner and other Non-BC\1856\Joba\185703743\03\_data\gis\_cad\gis\mxd\WaterAssessment\2020\185604576\_02\_ProjectComponents\_and\_AquaticImpacts\_11x17\_10.7.mxd Revised: 2021-05-13 By: hurner



**Legend**

Study Area: 4,464 acres

# Crossing Location Identifier

**Resource Impact Type**

- Permanent Impact (fill)
- Permanent Vegetation Clearing
- Temporary Disturbance (no fill)
- No Impact

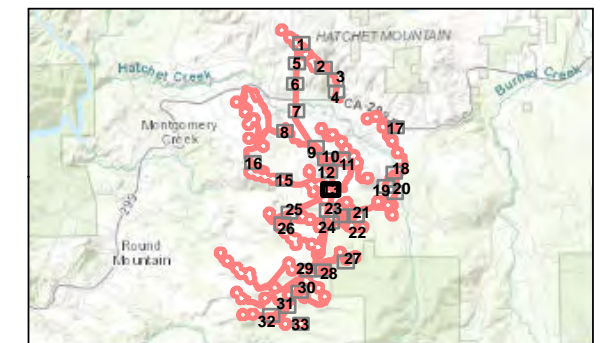
**Project Components and Disturbance Areas**

- Turbine (with structure number)
- Met Towers
- Operations and Maintenance Facility
- Laydown Yard/Staging Area
- Batch Plants
- Substation
- Permanent Impervious Disturbance
- Permanent Disturbance
- Temporary Disturbance



0 200 Feet  
(At original document size of 11x17)  
1:2,400

**Notes**  
1. Coordinate System: NAD 1983 UTM Zone 10N  
2. Background: ESRI World Imagery



**Project Location**  
Shasta County  
California

Prepared by KWH on 2020-08-24  
TR by SC on 2020-11-13

**Client/Project**  
ConnectGen  
Fountain Wind Energy

185704576

**Figure No.**

2

**Title**

**Project Components and Potential Impacts to Waters**

\\js0241\ppt\ss01\workgroup\1956\active\Task Owner and other Non-BC\1956\Joba\185703743\03\_data\gis\_cad\gis\mxd\WaterAssessment\2020\185604576\_02\_ProjectComponents\_and\_AquaticImpacts\_11x17\_10.7.mxd Revised: 2021-05-13 By: hurner



**Legend**

Study Area: 4,464 acres

# Crossing Location Identifier

**Resource Impact Type**

Permanent Impact (fill)

Permanent Vegetation Clearing

Temporary Disturbance (no fill)

No Impact

**Project Components and Disturbance Areas**

Turbine (with structure number)

Met Towers

Operations and Maintenance Facility

Laydown Yard/Staging Area

Batch Plants

Substation

Permanent Impervious Disturbance

Permanent Disturbance

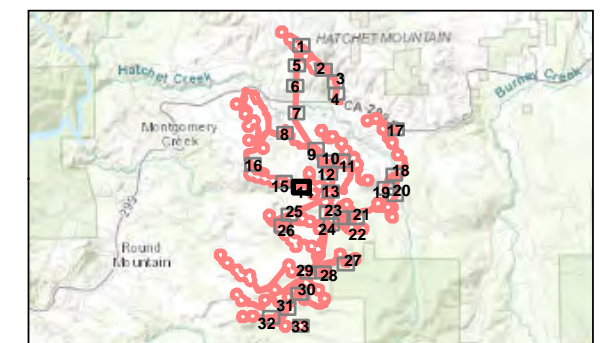
Temporary Disturbance



0 200 Feet  
(At original document size of 11x17)  
1:2,400

**Notes**

- 1. Coordinate System: NAD 1983 UTM Zone 10N
- 2. Background: ESRI World Imagery



**Project Location**  
Shasta County  
California

Prepared by KWH on 2020-08-24  
TR by SC on 2020-11-13

**Client/Project**  
ConnectGen  
Fountain Wind Energy

185704576

**Figure No.**

2

**Title**

**Project Components and Potential Impacts to Waters**

\\js0241\pp\iss01\workgroup\1956\active\Task\_Owner and other Non-BC\1956\_Job\185703743\03\_data\gis\_cad\gis\mxd\WaterAssessment\2020\185604576\_02\_ProjectComponents\_and\_AquaticImpacts\_11x17\_10.7.mxd Revised: 2021-05-13 By: hurner



**Legend**

[Red outline] Study Area: 4,464 acres

[#] Crossing Location Identifier

**Resource Impact Type**

[Orange fill] Permanent Impact (fill)

[Green fill] Permanent Vegetation Clearing

[Purple fill] Temporary Disturbance (no fill)

[Blue fill] No Impact

**Project Components and Disturbance Areas**

[Circle with dot] Turbine (with structure number)

[Diamond] Met Towers

[Rectangle with horizontal lines] Operations and Maintenance Facility

[Rectangle with diagonal lines] Laydown Yard/Staging Area

[Rectangle with vertical lines] Batch Plants

[Rectangle with grid] Substation

[Brown fill] Permanent Impervious Disturbance

[Yellow fill] Permanent Disturbance

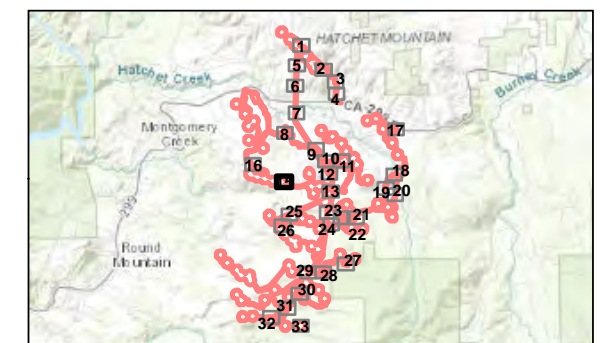
[Light yellow fill] Temporary Disturbance



0 200 Feet  
(At original document size of 11x17)  
1:2,400

**Notes**

- 1. Coordinate System: NAD 1983 UTM Zone 10N
- 2. Background: ESRI World Imagery



**Project Location**  
Shasta County  
California

Prepared by KWH on 2020-08-24  
TR by SC on 2020-11-13

**Client/Project**  
ConnectGen  
Fountain Wind Energy

185704576

**Figure No.**

**2**

**Title**

**Project Components and Potential Impacts to Waters**



\\js0241\pp\ss01\workgroup\1956\active\Task\_Owner and other Non-BC\1856\Joba185703743\03\_data\gis\_cad\gis\mxd\WaterAssessment2020\185604576\_02\_ProjectComponents\_and\_AquaticImpacts\_11x17\_10.7.mxd Revised: 2021-05-13 By: hurner



**Legend**

- Study Area: 4,464 acres
- # Crossing Location Identifier

**Resource Impact Type**

- Permanent Impact (fill)
- Permanent Vegetation Clearing
- Temporary Disturbance (no fill)
- No Impact

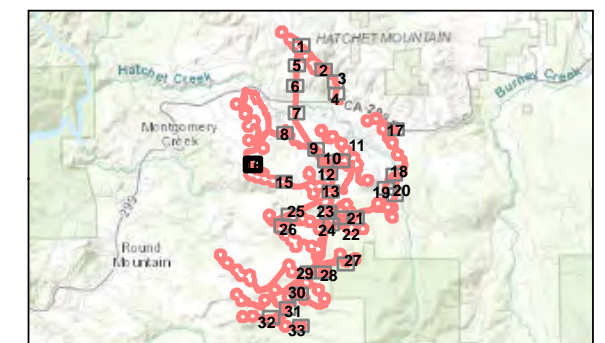
**Project Components and Disturbance Areas**

- Turbine (with structure number)
- Met Towers
- Operations and Maintenance Facility
- Laydown Yard/Staging Area
- Batch Plants
- Substation
- Permanent Impervious Disturbance
- Permanent Disturbance
- Temporary Disturbance



0 200 Feet  
(At original document size of 11x17)  
1:2,400

- Notes**
1. Coordinate System: NAD 1983 UTM Zone 10N
  2. Background: ESRI World Imagery



**Project Location**  
Shasta County  
California

Prepared by KWH on 2020-08-24  
TR by SC on 2020-11-13

**Client/Project**  
ConnectGen  
Fountain Wind Energy

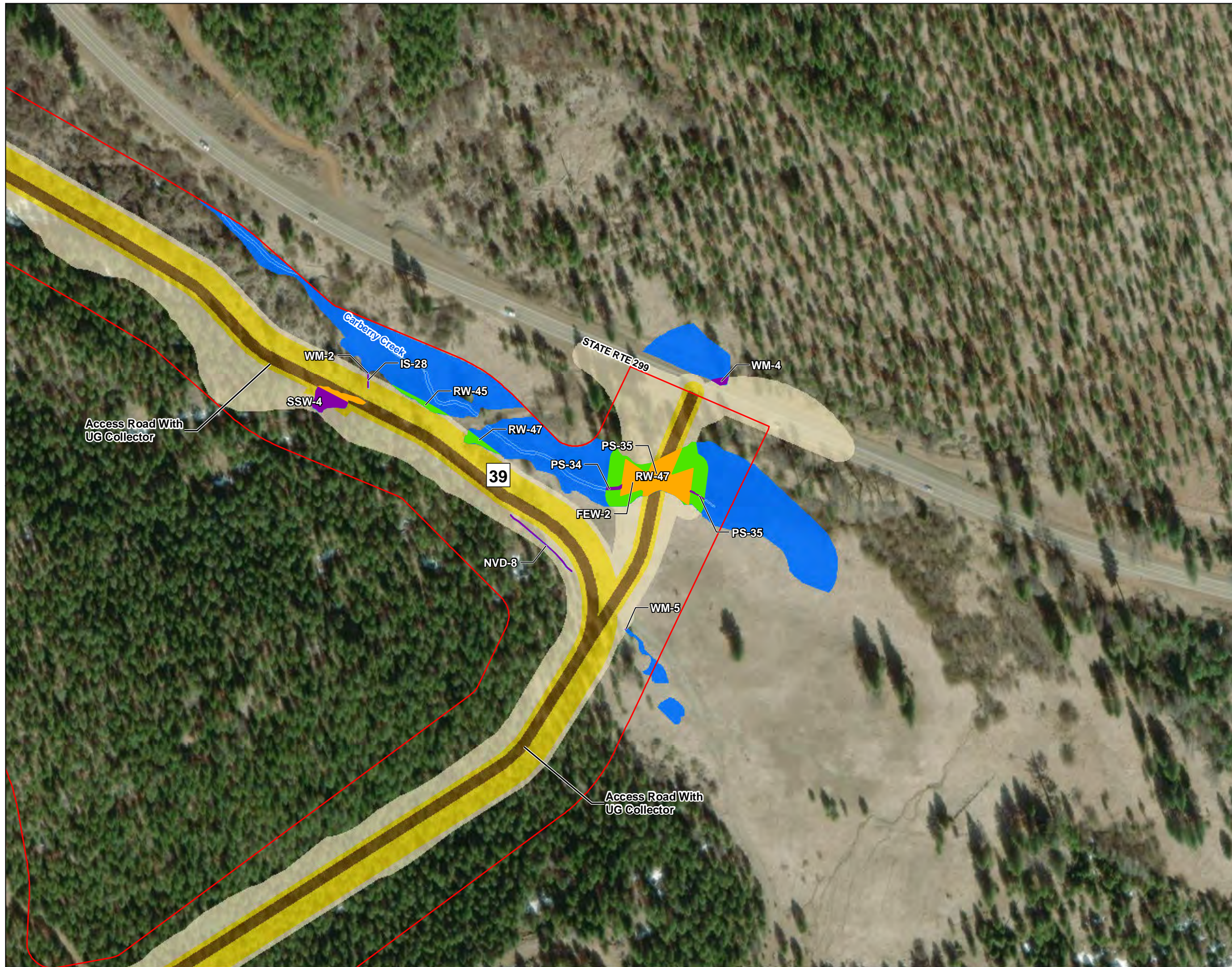
185704576

**Figure No.**

**2**

**Title**  
**Project Components and Potential Impacts to Waters**

\\js0241-ppl\ss01\workgroup\1956\active\Task Owner and other Non-BC\1856\Joba\1857\03743\03\_data\gis\_cad\gis\mxd\WaterAssessment\2020\185604576\_02\_ProjectComponents\_and\_AquaticImpacts\_11x17\_10.7.mxd Revised: 2021-05-13 By: hurner



**Legend**

Study Area: 4,464 acres

# Crossing Location Identifier

**Resource Impact Type**

- Permanent Impact (fill)
- Permanent Vegetation Clearing
- Temporary Disturbance (no fill)
- No Impact

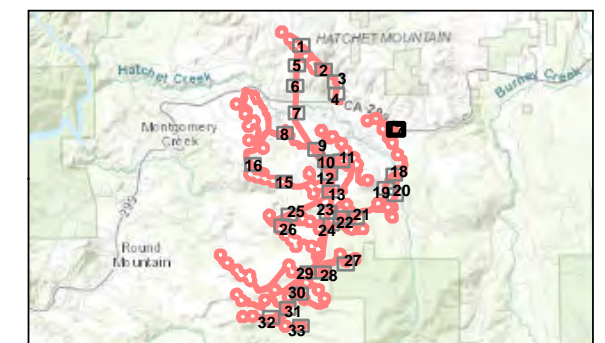
**Project Components and Disturbance Areas**

- Turbine (with structure number)
- Met Towers
- Operations and Maintenance Facility
- Laydown Yard/Staging Area
- Batch Plants
- Substation
- Permanent Impervious Disturbance
- Permanent Disturbance
- Temporary Disturbance



0 200 Feet  
 (At original document size of 11x17)  
 1:2,400

- Notes**
1. Coordinate System: NAD 1983 UTM Zone 10N
  2. Background: ESRI World Imagery



**Project Location**  
 Shasta County  
 California

Prepared by KWH on 2020-08-24  
 TR by SC on 2020-11-13

**Client/Project**  
 ConnectGen  
 Fountain Wind Energy

185704576

**Figure No.**

**2**

**Title**  
**Project Components and Potential Impacts to Waters**

\\js0241\pp\ss01\workgroup\1956\active\Task Owner and other Non-BC\1856\Joba\1857\03743\03\_data\gis\_cad\gis\mxd\WaterAssessment\2020\185604576\_02\_ProjectComponents\_and\_AquaticImpacts\_11x17\_10.7.mxd Revised: 2021-05-13 By: hurner



**Legend**

[Red outline] Study Area: 4,464 acres

[#] Crossing Location Identifier

**Resource Impact Type**

[Orange fill] Permanent Impact (fill)

[Green fill] Permanent Vegetation Clearing

[Purple fill] Temporary Disturbance (no fill)

[Blue fill] No Impact

**Project Components and Disturbance Areas**

[Circle with dot] Turbine (with structure number)

[Diamond] Met Towers

[Rectangle with border] Operations and Maintenance Facility

[Rectangle with diagonal lines] Laydown Yard/Staging Area

[Rectangle with horizontal lines] Batch Plants

[Rectangle with grid] Substation

[Brown fill] Permanent Impervious Disturbance

[Yellow fill] Permanent Disturbance

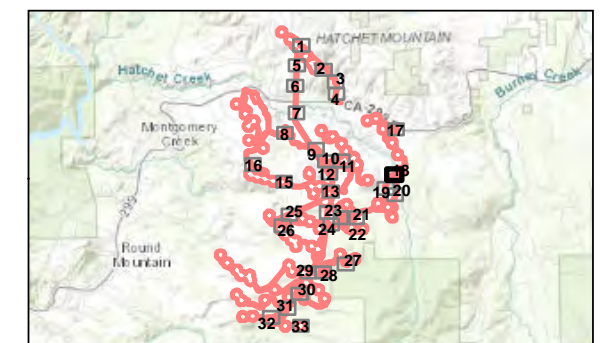
[Light yellow fill] Temporary Disturbance



0 200 Feet  
(At original document size of 11x17)  
1:2,400

**Notes**

- 1. Coordinate System: NAD 1983 UTM Zone 10N
- 2. Background: ESRI World Imagery



**Project Location**  
Shasta County  
California

Prepared by KWH on 2020-08-24  
TR by SC on 2020-11-13

**Client/Project**  
ConnectGen  
Fountain Wind Energy

185704576

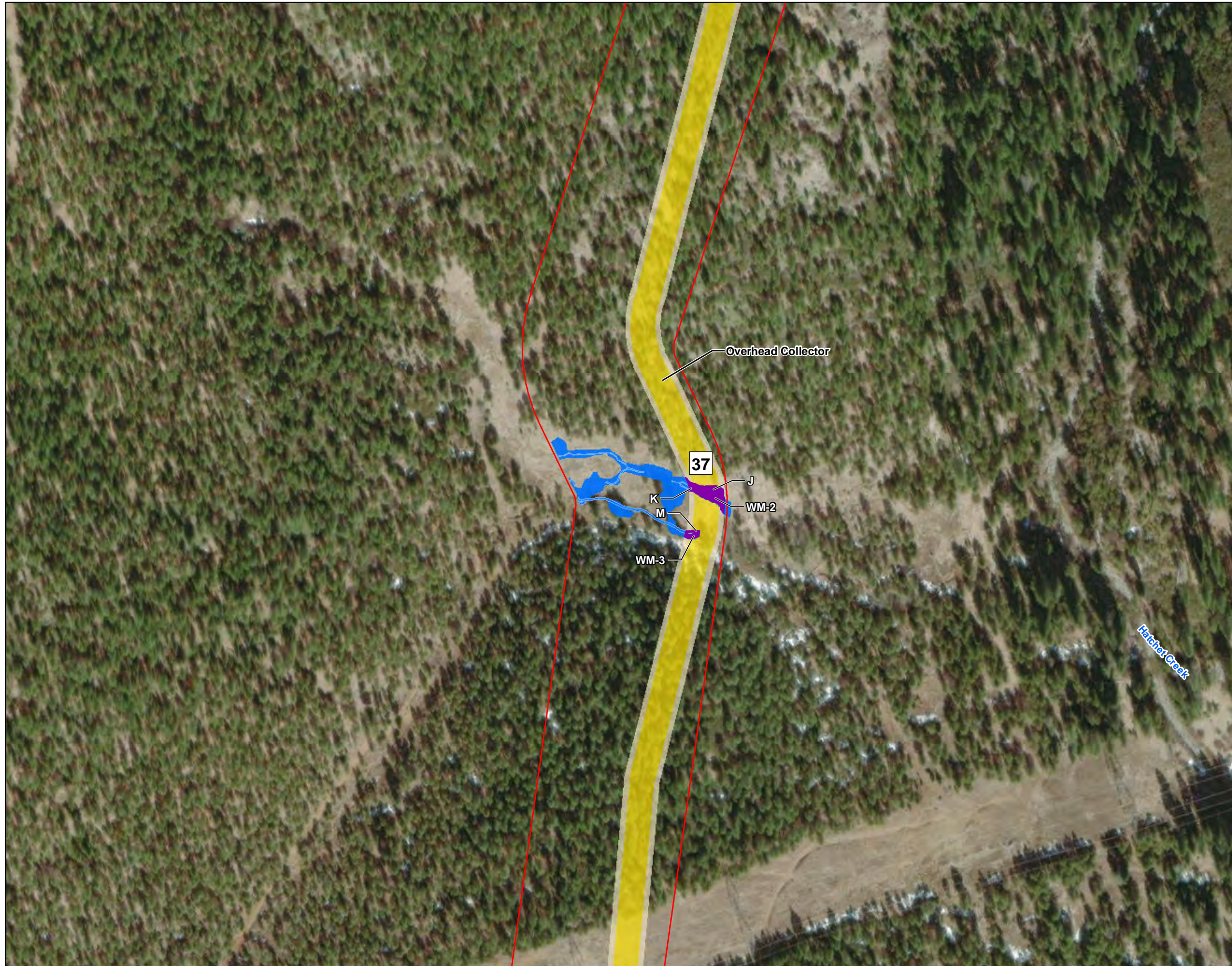
Figure No.

**2**

Title

**Project Components and Potential Impacts to Waters**

\\js0241-pp1ss01\workgroup\1956\active\Task Owner and other Non-BC\1856\Joba\185703743\03\_data\gis\_cad\gis\mxd\WaterAssessment\2020\185604576\_02\_ProjectComponents\_and\_AquaticImpacts\_11x17\_10.7.mxd Revised: 2021-05-13 By: hurner



**Legend**

- Study Area: 4,464 acres
- # Crossing Location Identifier

**Resource Impact Type**

- Permanent Impact (fill)
- Permanent Vegetation Clearing
- Temporary Disturbance (no fill)
- No Impact

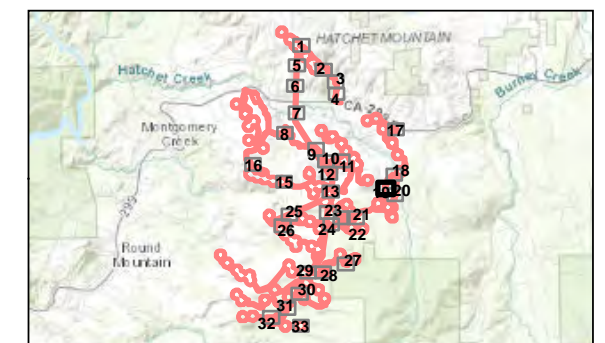
**Project Components and Disturbance Areas**

- Turbine (with structure number)
- Met Towers
- Operations and Maintenance Facility
- Laydown Yard/Staging Area
- Batch Plants
- Substation
- Permanent Impervious Disturbance
- Permanent Disturbance
- Temporary Disturbance



0 200 Feet  
(At original document size of 11x17)  
1:2,400

- Notes**
1. Coordinate System: NAD 1983 UTM Zone 10N
  2. Background: ESRI World Imagery



**Project Location**  
Shasta County  
California

Prepared by KWH on 2020-08-24  
TR by SC on 2020-11-13

**Client/Project**  
ConnectGen  
Fountain Wind Energy

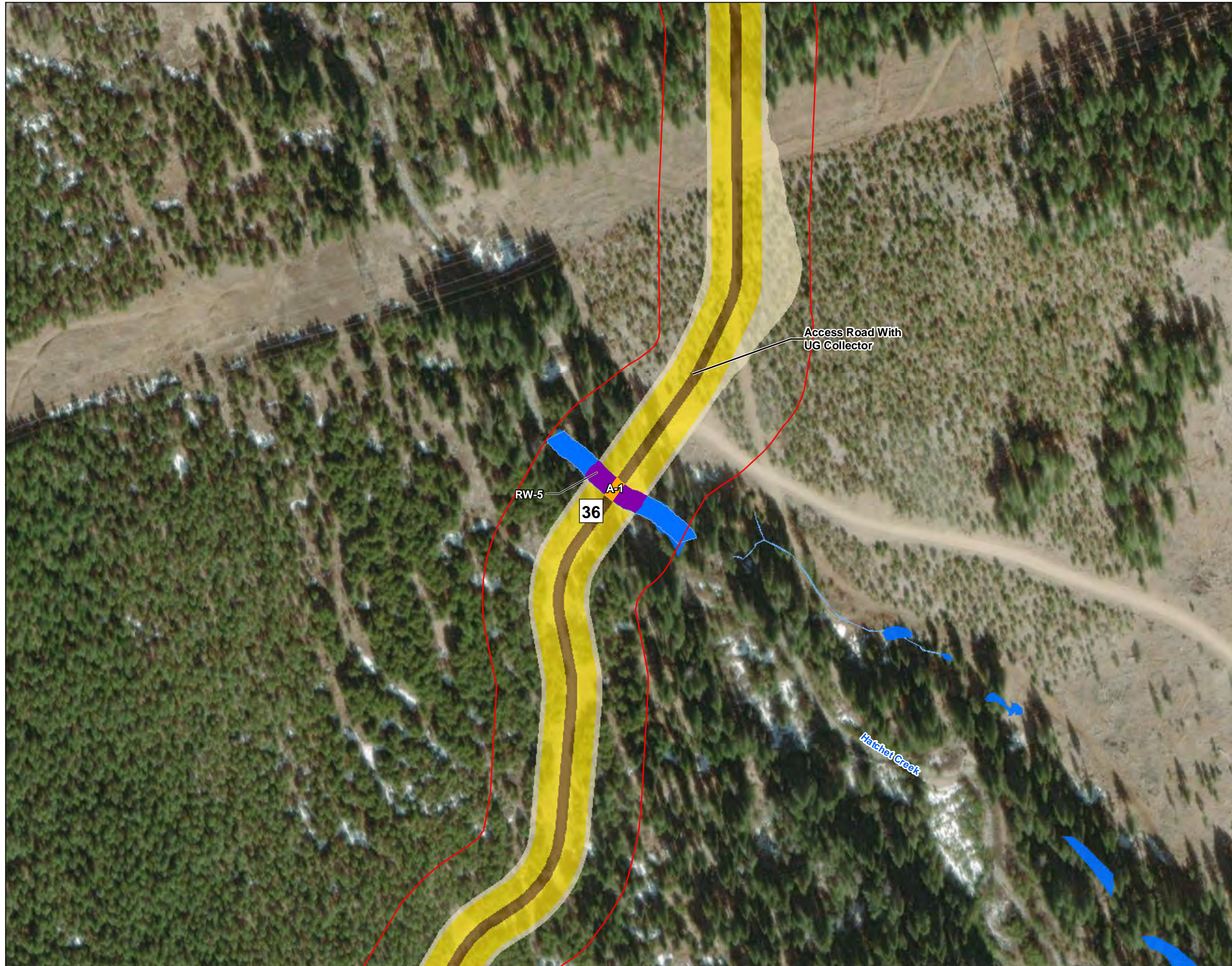
185704576

**Figure No.**

**2**

**Title**  
**Project Components and Potential Impacts to Waters**

\\js0241\pp\ss01\workgroup\1956\active\Task Owner and other Non-BC\1856\Joba\1857\07\43\03\_data\gis\_cad\gis\mxd\WaterAssessment\2020\185604576\_02\_ProjectComponents\_and\_AquaticImpacts\_11x17\_10.7.mxd Revised: 2021-05-13 By: hurner



**Legend**

[Red outline] Study Area: 4,464 acres

[#] Crossing Location Identifier

**Resource Impact Type**

[Orange] Permanent Impact (fill)

[Green] Permanent Vegetation Clearing

[Purple] Temporary Disturbance (no fill)

[Blue] No Impact

**Project Components and Disturbance Areas**

[Circle with number] Turbine (with structure number)

[Diamond] Met Towers

[Square with diagonal lines] Operations and Maintenance Facility

[Square with horizontal lines] Laydown Yard/Staging Area

[Square with vertical lines] Batch Plants

[Square with grid] Substation

[Brown] Permanent Impervious Disturbance

[Yellow] Permanent Disturbance

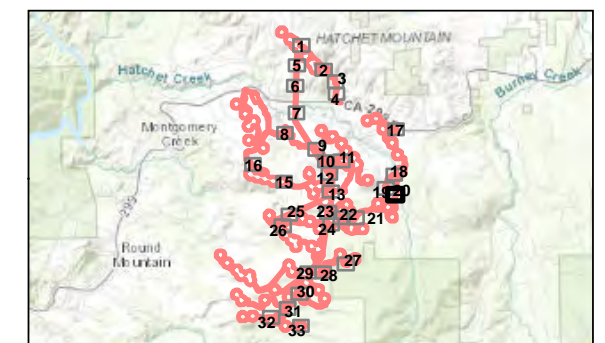
[Tan] Temporary Disturbance



0 200 Feet  
(At original document size of 11x17)  
1:2,400

**Notes**

- 1. Coordinate System: NAD 1983 UTM Zone 10N
- 2. Background: ESRI World Imagery



**Project Location**  
Shasta County  
California

Prepared by KWH on 2020-08-24  
TR by SC on 2020-11-13

**Client/Project**  
ConnectGen  
Fountain Wind Energy

185704576

**Figure No.**

**2**

**Title**

**Project Components and Potential Impacts to Waters**

\\js0241\ppt\ss01\workgroup\1956\active\Task Owner and other Non-BC\1856\Joba\185703743\03\_data\gis\_cad\gis\mxd\WaterAssessment\2020\185604576\_02\_ProjectComponents\_and\_AquaticImpacts\_11x17\_10.7.mxd Revised: 2021-05-13 By: hturner



**Legend**

[Red outline] Study Area: 4,464 acres

[#] Crossing Location Identifier

**Resource Impact Type**

[Orange fill] Permanent Impact (fill)

[Green fill] Permanent Vegetation Clearing

[Purple fill] Temporary Disturbance (no fill)

[Blue fill] No Impact

**Project Components and Disturbance Areas**

[Circle symbol] Turbine (with structure number)

[Diamond symbol] Met Towers

[Rectangle symbol] Operations and Maintenance Facility

[Hatched rectangle symbol] Laydown Yard/Staging Area

[Hatched rectangle symbol] Batch Plants

[Hatched rectangle symbol] Substation

[Brown fill] Permanent Impervious Disturbance

[Yellow fill] Permanent Disturbance

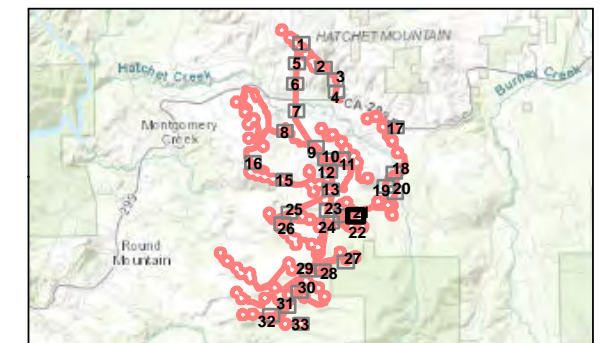
[Light yellow fill] Temporary Disturbance



0 200 Feet  
(At original document size of 11x17)  
1:2,400

**Notes**

- 1. Coordinate System: NAD 1983 UTM Zone 10N
- 2. Background: ESRI World Imagery



**Project Location**  
Shasta County  
California

Prepared by KWH on 2020-08-24  
TR by SC on 2020-11-13

**Client/Project**  
ConnectGen  
Fountain Wind Energy

185704576

**Figure No.**

**2**

**Title**

**Project Components and Potential Impacts to Waters**

\\js0241\pp\ss01\workgroup\1956\active\Task Owner and other Non-BC\1856\Joba\1857\03743\03\_data\gis\_cad\gis\mxd\WaterAssessment\2020\185604576\_02\_ProjectComponents\_and\_AquaticImpacts\_11x17\_10.7.mxd Revised: 2021-05-13 By: hurner



**Legend**

Study Area: 4,464 acres

# Crossing Location Identifier

**Resource Impact Type**

- Permanent Impact (fill)
- Permanent Vegetation Clearing
- Temporary Disturbance (no fill)
- No Impact

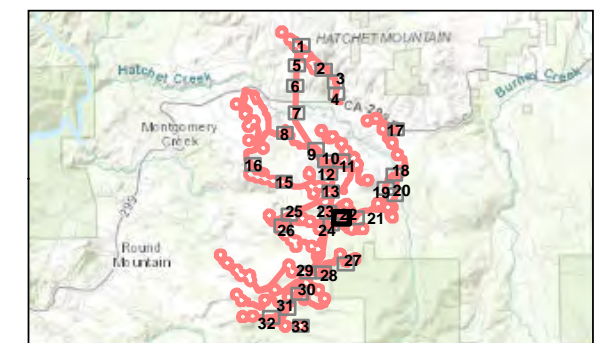
**Project Components and Disturbance Areas**

- Turbine (with structure number)
- Met Towers
- Operations and Maintenance Facility
- Laydown Yard/Staging Area
- Batch Plants
- Substation
- Permanent Impervious Disturbance
- Permanent Disturbance
- Temporary Disturbance



0 200 Feet  
(At original document size of 11x17)  
1:2,400

- Notes**
1. Coordinate System: NAD 1983 UTM Zone 10N
  2. Background: ESRI World Imagery



Project Location  
Shasta County  
California

Prepared by KWH on 2020-08-24  
TR by SC on 2020-11-13

Client/Project  
ConnectGen  
Fountain Wind Energy

185704576

Figure No.

**2**

Title

**Project Components and Potential Impacts to Waters**

\\js0241-ppl\ss01\workgroup\1956\active\Task Owner and other Non-BC\1856\Joba\1857\07\43\03\_data\gis\_cad\gis\mxd\WaterAssessment\2020\185604576\_02\_ProjectComponents\_and\_AquaticImpacts\_11x17\_10.7.mxd Revised: 2021-05-13 By: hurner



**Legend**

[Red outline] Study Area: 4,464 acres

[#] Crossing Location Identifier

**Resource Impact Type**

[Orange fill] Permanent Impact (fill)

[Green fill] Permanent Vegetation Clearing

[Purple fill] Temporary Disturbance (no fill)

[Blue fill] No Impact

**Project Components and Disturbance Areas**

[Circle with number] Turbine (with structure number)

[Diamond] Met Towers

[Rectangle with horizontal lines] Operations and Maintenance Facility

[Rectangle with diagonal lines] Laydown Yard/Staging Area

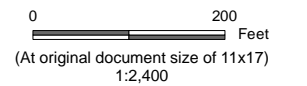
[Rectangle with vertical lines] Batch Plants

[Rectangle with grid pattern] Substation

[Brown fill] Permanent Impervious Disturbance

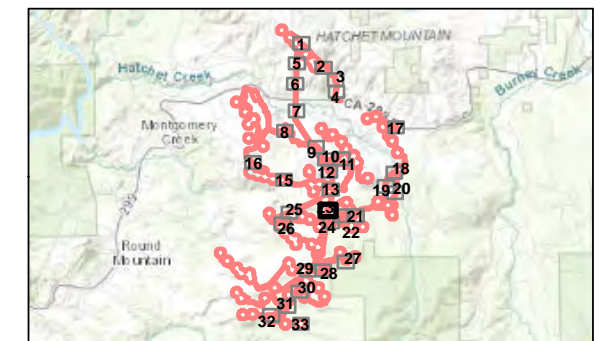
[Yellow fill] Permanent Disturbance

[Light yellow fill] Temporary Disturbance



**Notes**

- 1. Coordinate System: NAD 1983 UTM Zone 10N
- 2. Background: ESRI World Imagery



**Project Location**  
Shasta County  
California

Prepared by KWH on 2020-08-24  
TR by SC on 2020-11-13

**Client/Project**  
ConnectGen  
Fountain Wind Energy

185704576

Figure No.

**2**

Title

**Project Components and Potential Impacts to Waters**



\\js0241-ppl\ss01\workgroup\1956\active\Task Owner and other Non-BC\1956\Joba\185703743\03\_data\gis\_cad\gis\mxd\WaterAssessment\2020\185604576\_02\_ProjectComponents\_and\_AquaticImpacts\_11x17\_10.7.mxd Revised: 2021-05-13 By: hurner



**Legend**

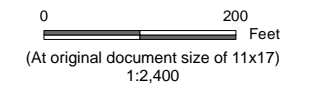
- Study Area: 4,464 acres
- # Crossing Location Identifier

**Resource Impact Type**

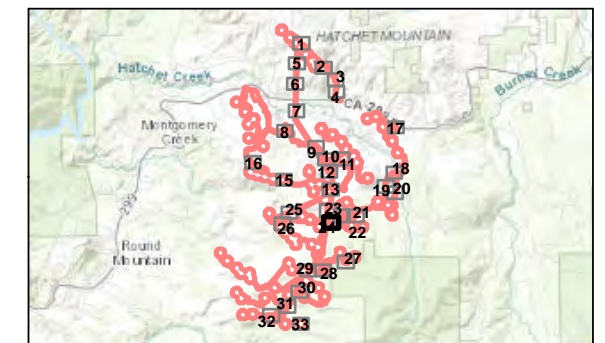
- Permanent Impact (fill)
- Permanent Vegetation Clearing
- Temporary Disturbance (no fill)
- No Impact

**Project Components and Disturbance Areas**

- Turbine (with structure number)
- Met Towers
- Operations and Maintenance Facility
- Laydown Yard/Staging Area
- Batch Plants
- Substation
- Permanent Impervious Disturbance
- Permanent Disturbance
- Temporary Disturbance



- Notes**
1. Coordinate System: NAD 1983 UTM Zone 10N
  2. Background: ESRI World Imagery



**Project Location**  
Shasta County  
California

Prepared by KWH on 2020-08-24  
TR by SC on 2020-11-13

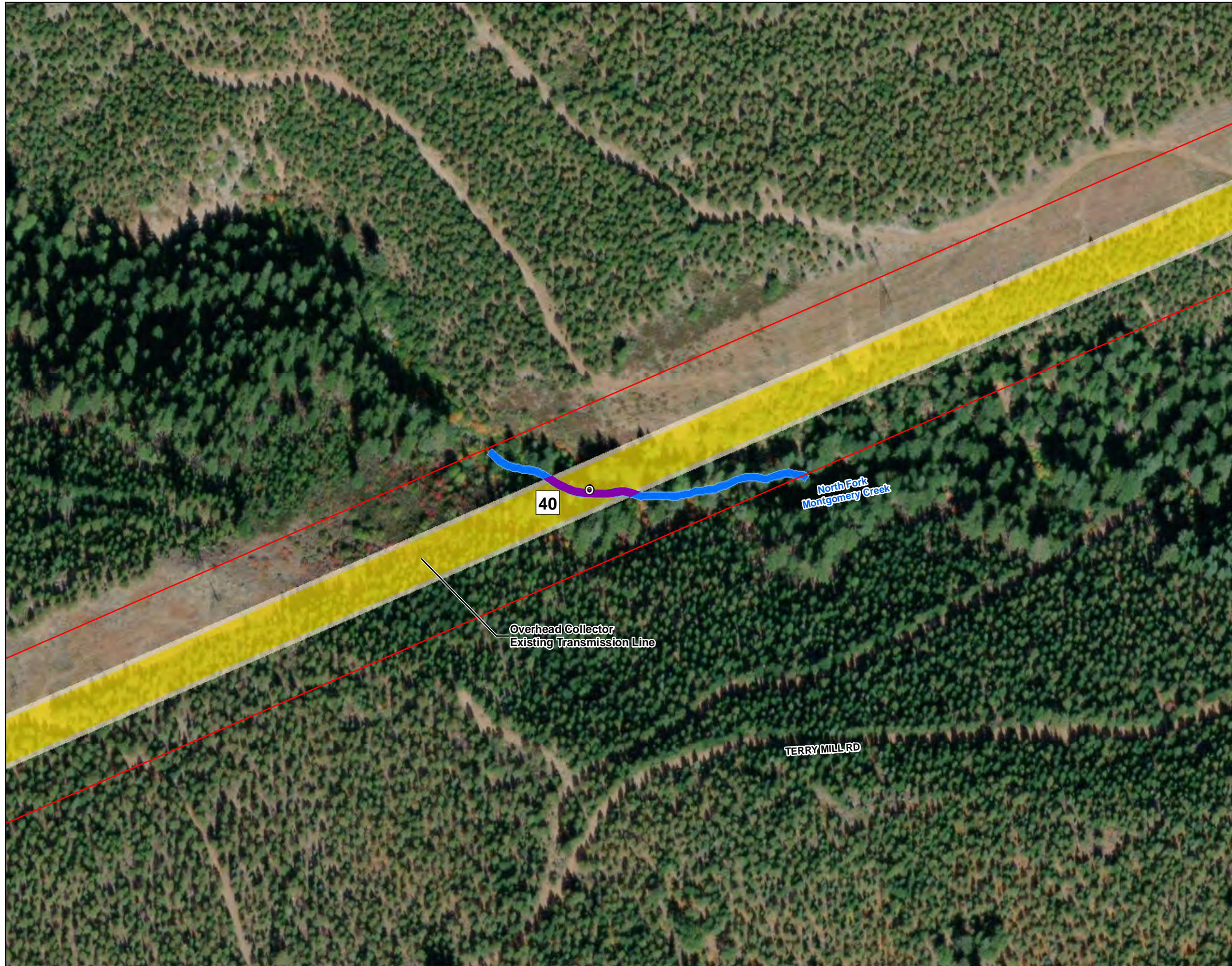
**Client/Project**  
ConnectGen  
Fountain Wind Energy

185704576

**Figure No.**  
**2**

**Title**  
**Project Components and Potential Impacts to Waters**

\\js0241\pp\ss01\workgroup\1956\active\Task\_Owner and other Non-BC\1956\Job\185703743\03\_data\gis\_cad\gis\mxd\WaterAssessment\2020\185604576\_02\_ProjectComponents\_and\_AquaticImpacts\_11x17\_10.7.mxd Revised: 2021-05-13 By: hurner



**Legend**

[Red outline] Study Area: 4,464 acres

[#] Crossing Location Identifier

**Resource Impact Type**

[Orange] Permanent Impact (fill)

[Green] Permanent Vegetation Clearing

[Purple] Temporary Disturbance (no fill)

[Blue] No Impact

**Project Components and Disturbance Areas**

[Circle] Turbine (with structure number)

[Diamond] Met Towers

[Rectangle] Operations and Maintenance Facility

[Hatched] Laydown Yard/Staging Area

[Hatched] Batch Plants

[Hatched] Substation

[Brown] Permanent Impervious Disturbance

[Yellow] Permanent Disturbance

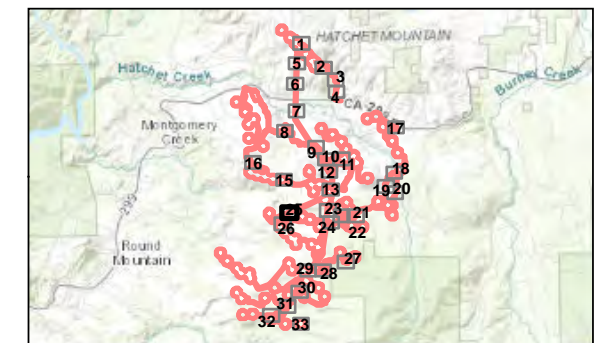
[Light Yellow] Temporary Disturbance



0 200 Feet  
(At original document size of 11x17)  
1:2,400

**Notes**

- 1. Coordinate System: NAD 1983 UTM Zone 10N
- 2. Background: ESRI World Imagery



**Project Location**  
Shasta County  
California

Prepared by KWH on 2020-08-24  
TR by SC on 2020-11-13

**Client/Project**  
ConnectGen  
Fountain Wind Energy

185704576

**Figure No.**

2

**Title**

**Project Components and Potential Impacts to Waters**

\\js0241-ppl\ss01\workgroup\1956\active\Task Owner and other Non-BC\1856\Joba185703743\03\_data\gis\_cad\gis\mxd\WaterAssessment\2020\185604576\_02\_ProjectComponents\_and\_AquaticImpacts\_11x17\_10.7.mxd Revised: 2021-05-13 By: hurner



**Legend**

Study Area: 4,464 acres

# Crossing Location Identifier

**Resource Impact Type**

- Permanent Impact (fill)
- Permanent Vegetation Clearing
- Temporary Disturbance (no fill)
- No Impact

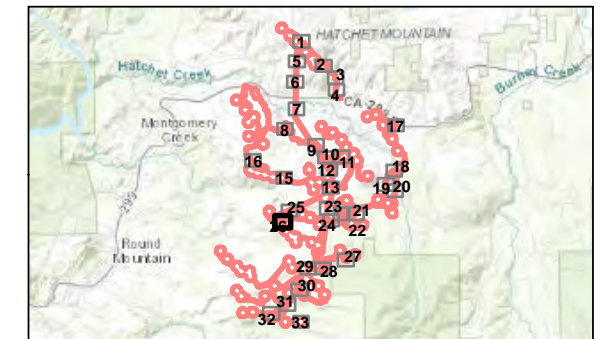
**Project Components and Disturbance Areas**

- Turbine (with structure number)
- Met Towers
- Operations and Maintenance Facility
- Laydown Yard/Staging Area
- Batch Plants
- Substation
- Permanent Impervious Disturbance
- Permanent Disturbance
- Temporary Disturbance



0 200 Feet  
 (At original document size of 11x17)  
 1:2,400

**Notes**  
 1. Coordinate System: NAD 1983 UTM Zone 10N  
 2. Background: ESRI World Imagery



**Project Location**  
 Shasta County  
 California

Prepared by KWH on 2020-08-24  
 TR by SC on 2020-11-13

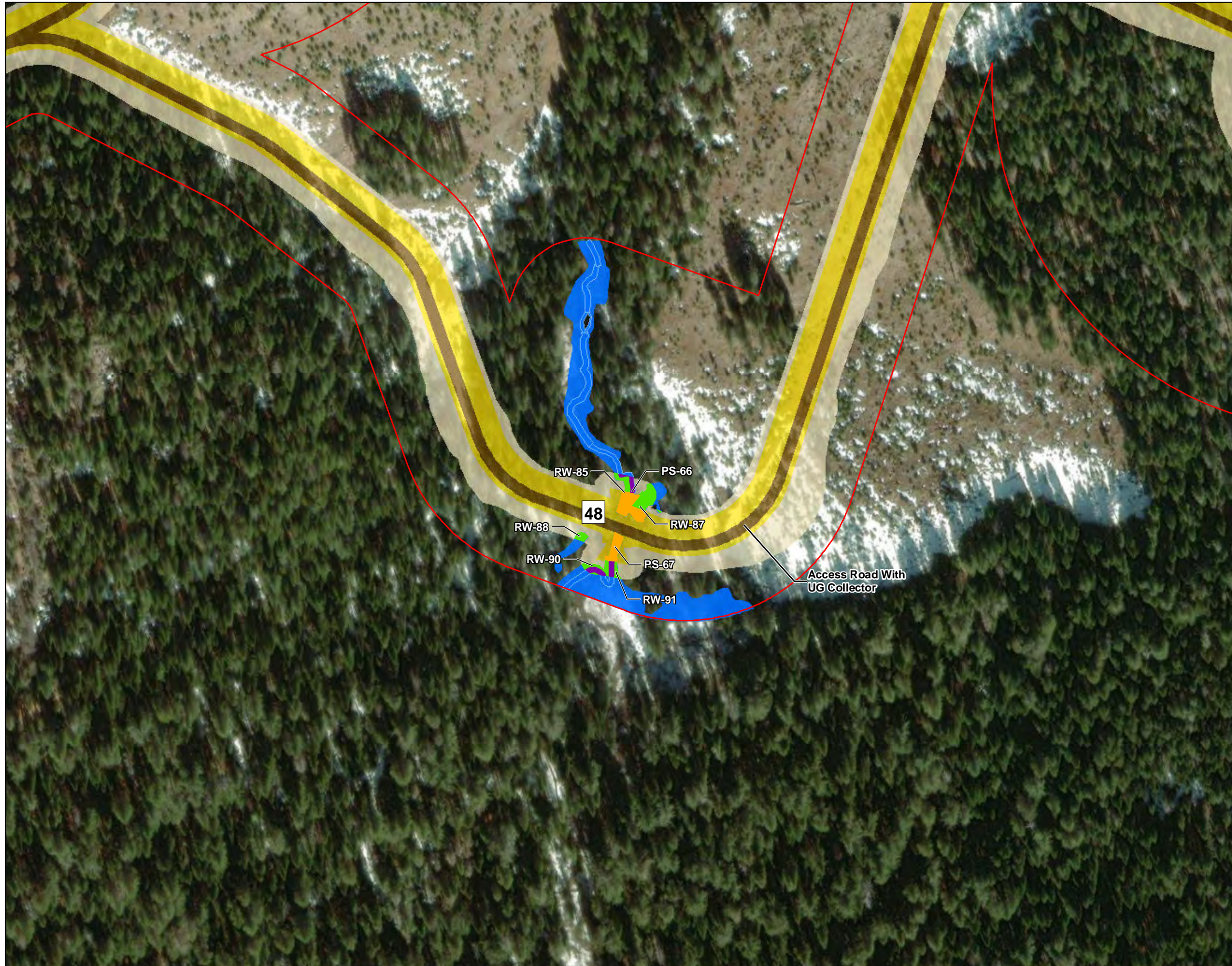
**Client/Project**  
 ConnectGen  
 Fountain Wind Energy

185704576

**Figure No.**  
 2

**Title**  
 Project Components and Potential Impacts to Waters

\\js0241-ppl\ss01\workgroup\1956\active\Task Owner and other Non-BC\1856\Job\185703743\03\_data\gis\_cad\gis\mxd\WaterAssessment\2020\185604576\_02\_ProjectComponents\_and\_AquaticImpacts\_11x17\_10.7.mxd Revised: 2021-05-13 By: hurner



**Legend**

[Red outline] Study Area: 4,464 acres

[#] Crossing Location Identifier

**Resource Impact Type**

[Orange] Permanent Impact (fill)

[Green] Permanent Vegetation Clearing

[Purple] Temporary Disturbance (no fill)

[Blue] No Impact

**Project Components and Disturbance Areas**

[Circle with number] Turbine (with structure number)

[Diamond] Met Towers

[Rectangle with horizontal lines] Operations and Maintenance Facility

[Rectangle with diagonal lines] Laydown Yard/Staging Area

[Rectangle with vertical lines] Batch Plants

[Rectangle with grid pattern] Substation

[Brown fill] Permanent Impervious Disturbance

[Yellow fill] Permanent Disturbance

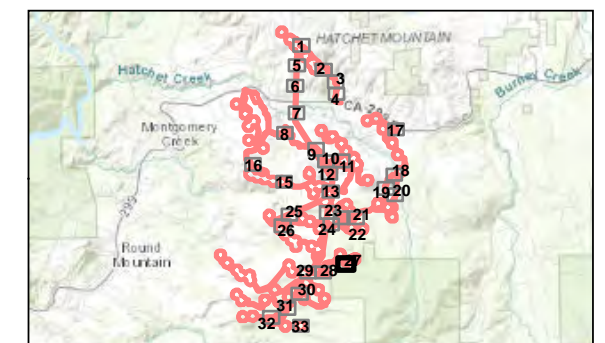
[Light yellow fill] Temporary Disturbance



0 200 Feet  
(At original document size of 11x17)  
1:2,400

**Notes**

- 1. Coordinate System: NAD 1983 UTM Zone 10N
- 2. Background: ESRI World Imagery



**Project Location**  
Shasta County  
California

Prepared by KWH on 2020-08-24  
TR by SC on 2020-11-13

**Client/Project**  
ConnectGen  
Fountain Wind Energy

185704576

**Figure No.**

2

**Title**

**Project Components and Potential Impacts to Waters**

\\js0241-pp1ss01\workgroup\1956\active\Task\_Owner and other Non-BC\1856\Joba\1857\03743\03\_data\gis\cad\gis\mxd\WaterAssessment\2020\185604576\_02\_ProjectComponents\_and\_AquaticImpacts\_11x17\_10.7.mxd Revised: 2021-05-13 By: hurner



**Legend**

- Study Area: 4,464 acres
- # Crossing Location Identifier

**Resource Impact Type**

- Permanent Impact (fill)
- Permanent Vegetation Clearing
- Temporary Disturbance (no fill)
- No Impact

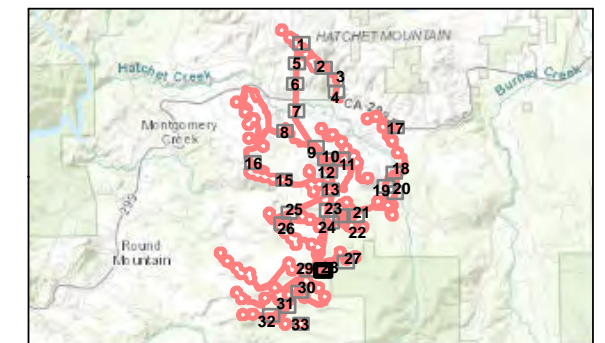
**Project Components and Disturbance Areas**

- Turbine (with structure number)
- Met Towers
- Operations and Maintenance Facility
- Laydown Yard/Staging Area
- Batch Plants
- Substation
- Permanent Impervious Disturbance
- Permanent Disturbance
- Temporary Disturbance



0 200 Feet  
 (At original document size of 11x17)  
 1:2,400

- Notes**
1. Coordinate System: NAD 1983 UTM Zone 10N
  2. Background: ESRI World Imagery



**Project Location**  
 Shasta County  
 California

Prepared by KWH on 2020-08-24  
 TR by SC on 2020-11-13

**Client/Project**  
 ConnectGen  
 Fountain Wind Energy

185704576

**Figure No.**

**2**

**Title**

**Project Components and Potential Impacts to Waters**

\\js0241\ppt\ss01\workgroup\1956\active\Task Owner and other Non-BC\1956\Job\185703743\03\_data\gis\_cad\gis\mxd\WaterAssessment\2020\185604576\_02\_ProjectComponents\_and\_AquaticImpacts\_11x17\_10.7.mxd Revised: 2021-05-13 By: hurner



**Legend**

- Study Area: 4,464 acres
- # Crossing Location Identifier

**Resource Impact Type**

- Permanent Impact (fill)
- Permanent Vegetation Clearing
- Temporary Disturbance (no fill)
- No Impact

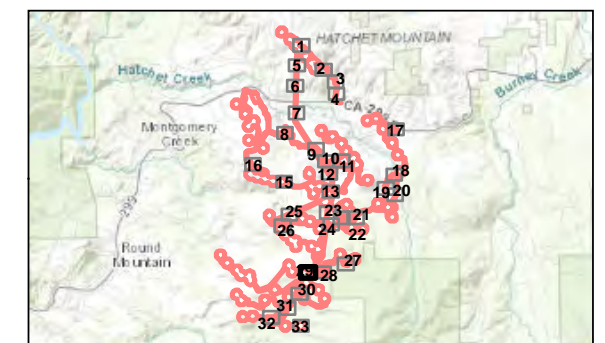
**Project Components and Disturbance Areas**

- Turbine (with structure number)
- Met Towers
- Operations and Maintenance Facility
- Laydown Yard/Staging Area
- Batch Plants
- Substation
- Permanent Impervious Disturbance
- Permanent Disturbance
- Temporary Disturbance



0 200 Feet  
 (At original document size of 11x17)  
 1:2,400

- Notes**
1. Coordinate System: NAD 1983 UTM Zone 10N
  2. Background: ESRI World Imagery



**Project Location**  
 Shasta County  
 California

Prepared by KWH on 2020-08-24  
 TR by SC on 2020-11-13

**Client/Project**  
 ConnectGen  
 Fountain Wind Energy

185704576

**Figure No.**  
 2

**Title**  
 Project Components and Potential Impacts to Waters

\\js0241-ppl\ss01\workgroup\1956\active\Task Owner and other Non-BC\1856\Job\1857\03743\03\_data\gis\_cad\gis\mxd\WaterAssessment\2020\185604576\_02\_ProjectComponents\_and\_AquaticImpacts\_11x17\_10.7.mxd Revised: 2021-05-13 By: hurner



**Legend**

- Study Area: 4,464 acres
- # Crossing Location Identifier

**Resource Impact Type**

- Permanent Impact (fill)
- Permanent Vegetation Clearing
- Temporary Disturbance (no fill)
- No Impact

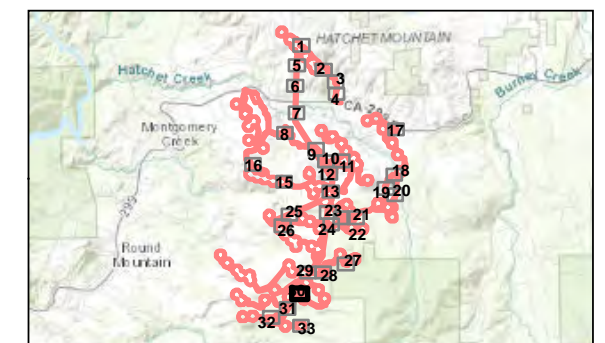
**Project Components and Disturbance Areas**

- Turbine (with structure number)
- Met Towers
- Operations and Maintenance Facility
- Laydown Yard/Staging Area
- Batch Plants
- Substation
- Permanent Impervious Disturbance
- Permanent Disturbance
- Temporary Disturbance



0 200 Feet  
 (At original document size of 11x17)  
 1:2,400

- Notes**
1. Coordinate System: NAD 1983 UTM Zone 10N
  2. Background: ESRI World Imagery



**Project Location**  
 Shasta County  
 California

Prepared by KWH on 2020-08-24  
 TR by SC on 2020-11-13

**Client/Project**  
 ConnectGen  
 Fountain Wind Energy

185704576

**Figure No.**

**2**

**Title**

**Project Components and Potential Impacts to Waters**

\\js0241-ppl\ss01\workgroup\1956\active\Task\_Owner and other Non-BC\1956\_Job\185703743\03\_data\gis\_cad\gis\mxd\WaterAssessment\2020\185604576\_02\_ProjectComponents\_and\_AquaticImpacts\_11x17\_10.7.mxd Revised: 2021-05-13 By: hurner



**Legend**

Study Area: 4,464 acres

# Crossing Location Identifier

**Resource Impact Type**

- Permanent Impact (fill)
- Permanent Vegetation Clearing
- Temporary Disturbance (no fill)
- No Impact

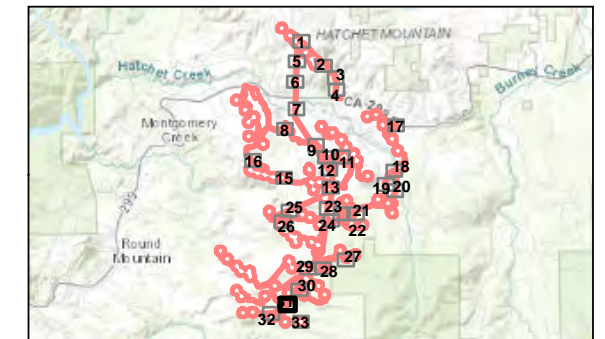
**Project Components and Disturbance Areas**

- Turbine (with structure number)
- Met Towers
- Operations and Maintenance Facility
- Laydown Yard/Staging Area
- Batch Plants
- Substation
- Permanent Impervious Disturbance
- Permanent Disturbance
- Temporary Disturbance



0 200 Feet  
 (At original document size of 11x17)  
 1:2,400

**Notes**  
 1. Coordinate System: NAD 1983 UTM Zone 10N  
 2. Background: ESRI World Imagery



**Project Location**  
 Shasta County  
 California

Prepared by KWH on 2020-08-24  
 TR by SC on 2020-11-13

**Client/Project**  
 ConnectGen  
 Fountain Wind Energy

185704576

**Figure No.**  
 2

**Title**  
 Project Components and Potential Impacts to Waters



\\js0241-ppl\ss01\workgroup\1956\active\Task Owner and other Non-BC\1856\Job\1857\0743\03\_data\gis\_cad\gis\mxd\WaterAssessment\2020\185604576\_02\_ProjectComponents\_and\_AquaticImpacts\_11x17\_10.7.mxd Revised: 2021-05-13 By: hturner



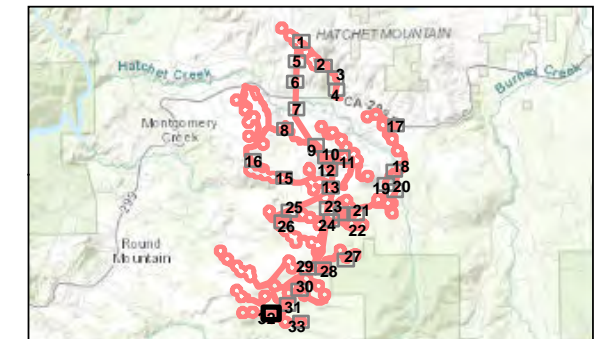
**Legend**

- Study Area: 4,464 acres
- # Crossing Location Identifier
- Resource Impact Type**
- Permanent Impact (fill)
- Permanent Vegetation Clearing
- Temporary Disturbance (no fill)
- No Impact
- Project Components and Disturbance Areas**
- Turbine (with structure number)
- Met Towers
- Operations and Maintenance Facility
- Laydown Yard/Staging Area
- Batch Plants
- Substation
- Permanent Impervious Disturbance
- Permanent Disturbance
- Temporary Disturbance



0 200 Feet  
 (At original document size of 11x17)  
 1:2,400

- Notes**
1. Coordinate System: NAD 1983 UTM Zone 10N
  2. Background: ESRI World Imagery



*Project Location*  
 Shasta County  
 California

*Prepared by KWH on 2020-08-24*  
 TR by SC on 2020-11-13

*Client/Project*  
 ConnectGen  
 Fountain Wind Energy

185704576

*Figure No.*  
**2**

*Title*  
**Project Components and Potential Impacts to Waters**

\\js0241\pp\ss01\workgroup\1956\active\Task\_Owner and other Non-BC\1856\_Job\1857\03743\03\_data\gis\_cad\gis\mxd\WaterAssessment\2020\185604576\_02\_ProjectComponents\_and\_AquaticImpacts\_11x17\_10.7.mxd Revised: 2021-05-13 By: hurner



**Legend**

Study Area: 4,464 acres

# Crossing Location Identifier

**Resource Impact Type**

Permanent Impact (fill)

Permanent Vegetation Clearing

Temporary Disturbance (no fill)

No Impact

**Project Components and Disturbance Areas**

Turbine (with structure number)

Met Towers

Operations and Maintenance Facility

Laydown Yard/Staging Area

Batch Plants

Substation

Permanent Impervious Disturbance

Permanent Disturbance

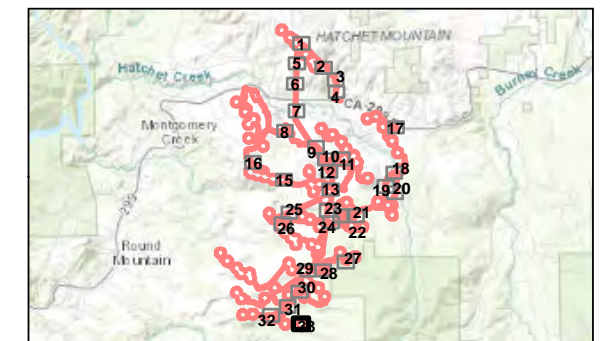
Temporary Disturbance



0 200 Feet  
(At original document size of 11x17)  
1:2,400

**Notes**

- 1. Coordinate System: NAD 1983 UTM Zone 10N
- 2. Background: ESRI World Imagery



Project Location  
Shasta County  
California

Prepared by KWH on 2020-08-24  
TR by SC on 2020-11-13

Client/Project  
ConnectGen  
Fountain Wind Energy

185704576

Figure No.

2

Title

**Project Components and Potential Impacts to Waters**