

DOCKETED	
Docket Number:	23-OPT-01
Project Title:	Fountain Wind Project
TN #:	248320-6
Document Title:	Presentation - Pit River Meeting
Description:	N/A
Filer:	Caitlin Barns
Organization:	Stantec Consulting Services, Inc.
Submitter Role:	Applicant Consultant
Submission Date:	1/4/2023 1:58:57 PM
Docketed Date:	1/4/2023

ConnectGEN

Fountain Wind Project



*Connecting Power,
Projects, and People*

June 2020

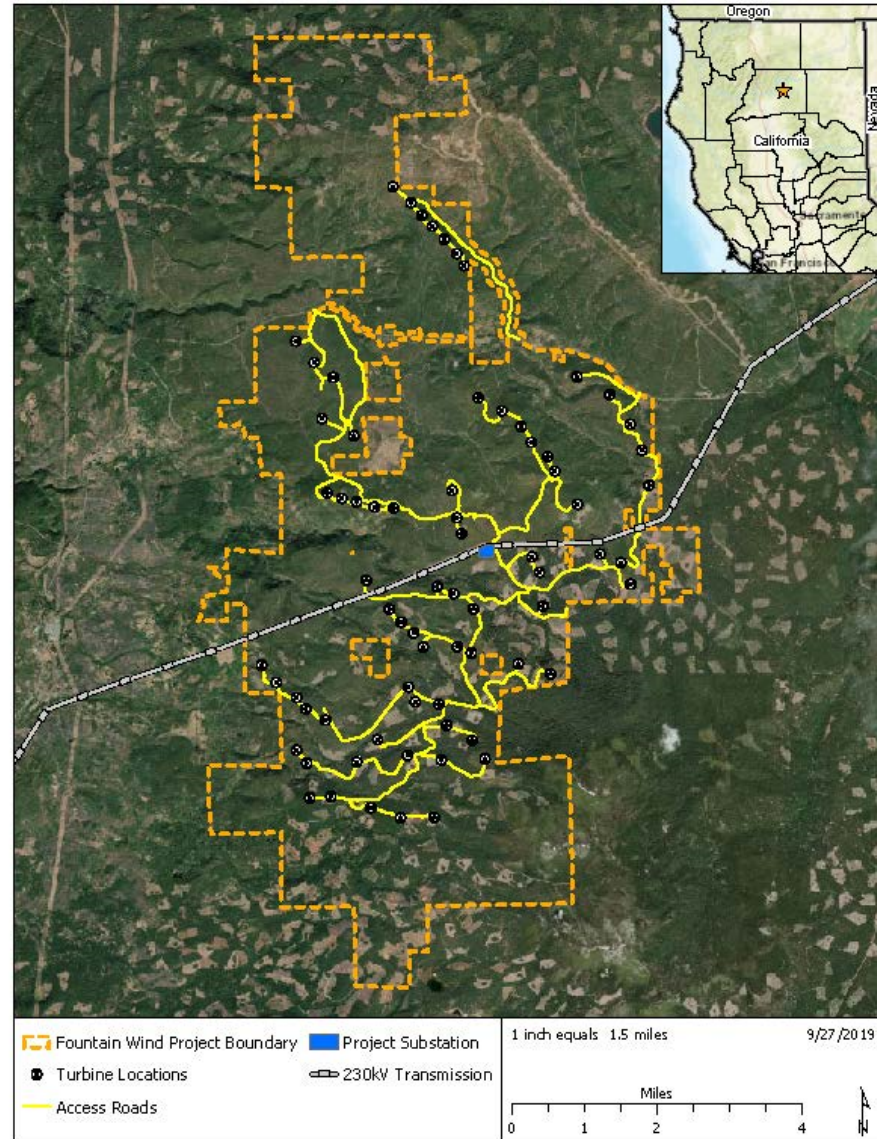
www.connectgenllc.com

Project Overview – Fountain Wind Project

Location	Shasta County, CA (40°51'37.67"N, 121°52'14.23"W)
Nearest City	Redding (approx. 40 mi)
Commercial Operations Date	December 2022
Land position	Approx. 30,000 acres (100% Private)
Project size	200 megawatts
Point of Interconnection	New switching station on PG&E's Pit #1 - Cottonwood 230 kV Transmission Line.

Project Highlights

- Robust wind resource for Northern California (6.93 m/s @ 108m hub height)
- Signed LGIA does not require construction of gen-tie or significant upgrades
- Single private landowner hosts all potential turbine sites.
- Project undergoing CEQA study to include publication of a comprehensive Environmental Impact Report.



Project Updates

Development

- Continued stakeholder coordination in Q1 2020

Project Design

- Continued engineering of access roads and collection to refine disturbance area footprint. Reduces Project Site (~4,500 acres) to smaller disturbance area (<1,500 acres).

Permitting

- Completed various environmental and technical studies
- Continued coordination with agencies regarding applicable pre-construction permits
- Shasta County's DEIR expected later in June 2020, CEQA determination in late 2020

Cultural Resource Studies

Desktop Data Review

- NAHC Request
- CHRIS/NEIC

Field Survey for Historic and Prehistoric Resources

- Performed in 2018 and 2019
- Pedestrian survey of Project Site (4,463 acres)
- 24 newly discovered isolates; 12 newly discovered sites; 10 previously recorded sites;
- 2 Prehistoric Sites
 - P-45-2869 – Previously identified prehistoric lithic scatter
 - FW 11- Multicomponent lithic scatter and historic debris



Tribal Cultural Resources

Potential Cultural Landscapes or TCRs within or Near the Project Area based on scoping comments and other outreach efforts:

- Views of Kohm Yamani, Snow Mountain from ancestral lands through the project site
- Views of Yet-Tey-Cha-Na, Lassen Peak from ancestral lands through the project site
- Ridgetop trail that connects the Pit River to Goose Valley to the Lassen Area for Vision Quests
- Unspecified areas where medicinal herbs were gathered
- Ancestral burial grounds within the project area