

**DOCKETED**

<b>Docket Number:</b>	22-IEPR-04
<b>Project Title:</b>	Equity
<b>TN #:</b>	243766
<b>Document Title:</b>	Presentation - Our Salton Sea Initiative
<b>Description:</b>	4. Syliva Paz-Chris Benner
<b>Filer:</b>	Raquel Kravitz
<b>Organization:</b>	Alianza Coachella Valley
<b>Submitter Role:</b>	Public
<b>Submission Date:</b>	6/28/2022 3:57:40 PM
<b>Docketed Date:</b>	6/28/2022

# *Our Salton Sea Initiative*

**Silvia Paz, MPP**

**Founder & Executive Director**

**Alianza Coachella Valley:** The only alliance in the Salton Sea region bringing together community members, nonprofits, and government to lead efforts for a thriving region.

[Info@AlianzaCV.org](mailto:Info@AlianzaCV.org)

# ***Our Salton Sea: Investing in People for a Thriving Region***

A partnership of Alianza Coachella Valley; the Assembly Committee on Jobs, Economic Development, and the Economy; UCR Center for Social Innovation; and the Institute of Social Transformation at UC Santa Cruz.

- ❖ ***An exploration of how to realize equitable, inclusive, and sustainable economic development and mobility in the Salton Sea Region.***

# *Agenda*

- **Our Salton Sea Initiative (Silvia Paz)**
- **Developing Inclusive, Equitable, and Sustainable Economies (Chris Benner)**
- **Salton Sea Demonstration Project (Silvia Paz)**

# Overarching Question:

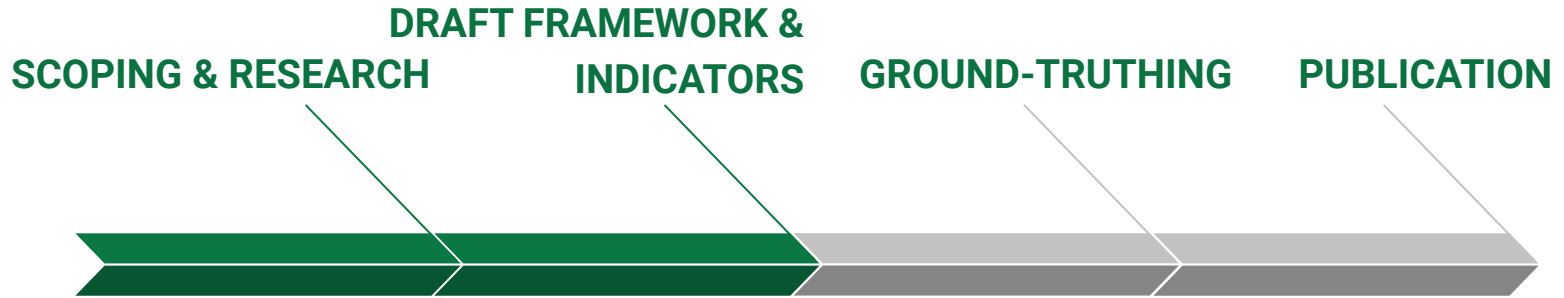
How do you foster equitable, inclusive, and sustainable economic mobility in a rural desert economy?



# Guiding Values



# Approach



- Background Research / Lit Review
- Landscape Analysis

- Preliminary findings
- Analysis

- Focus groups
- Analysis
- Researcher feedback

- Recommendations
- Strategy / Actions

# OUR SALTON SEA, Track 1: Measuring and Developing Inclusive, Equitable and Sustainable Economies

Chris Benner, Ph.D.  
Dorothy E. Everett Chair in Global Information and Social  
Entrepreneurship  
Director, Institute for Social Transformation  
Professor, Environmental Studies and Sociology  
UC Santa Cruz  
[cbenner@ucsc.edu](mailto:cbenner@ucsc.edu)

**Solidarity  
Economics** 

June 29, 2022

UC SANTA CRUZ

Institute for  
**Social Transformation**

INQUIRY WITH IMPACT



# Salton Sea Initiative Track One: Measuring and Developing Inclusive, Equitable and Sustainable Economies

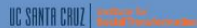
APRIL 2022



Photo Credit: ChangeClear.com/UrTajeb

AUTHORED BY:

NATE EDENHOFER & J. ALEJANDRO ARTIGA-PURCELL



Thanks to..



Nate Edenhofer  
Graduate Student, Politics  
UCSC



J. Alejandro Artiga-Purcell,  
Ph.D.  
Environmental Studies  
UCSC

UC SANTA CRUZ

Institute for  
**Social Transformation**

INQUIRY WITH IMPACT

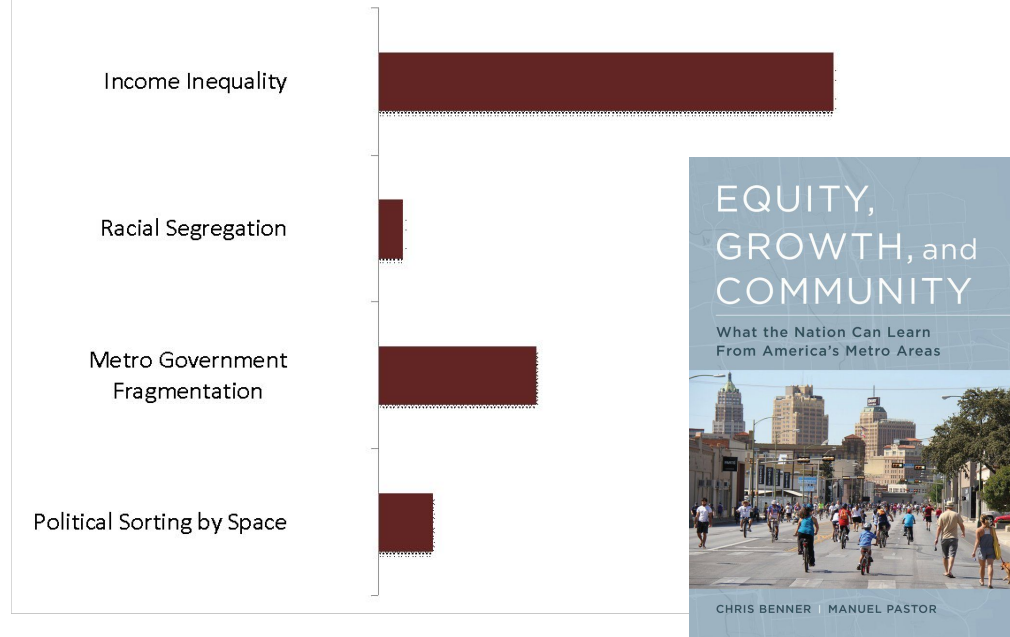
# WHAT IS SOLIDARITY ECONOMICS?

## ¿QUÉ ES LA ECONOMÍA SOLIDARIA?

We should recognize the **mutuality** that actually **drives our economy** – and stress how mutuality, fairness, and **inclusion** can generate **prosperity** for many

*Debemos reconocer la **reciprocidad** que realmente **impulsa nuestra economía** y enfatizar cómo la reciprocidad, la equidad y la **inclusión** pueden generar **prosperidad** para muchos.*

### What Derails Sustained Growth?



# WHAT IS SOLIDARITY ECONOMICS?

## ¿QUÉ ES LA ECONOMÍA SOLIDARIA?

We should recognize that because **some people benefit** from the current state of affairs, **social movements** will be necessary to generate **change** and reinforce habits of **connection**



*Debemos reconocer que debido a que **algunas personas se benefician** del estado actual de las cosas, los **movimientos sociales** serán necesarios para generar **cambios** y reforzar hábitos de **conexión**.*

# CHALLENGES & OPPORTUNITIES IN THE SALTON SEA

## DESAFÍOS y OPORTUNIDADES EN EL SALTON SEA

### Socio-economic inequality

- Low-wage industries
- Toxic agriculture and shrinking Salton Sea

### But...

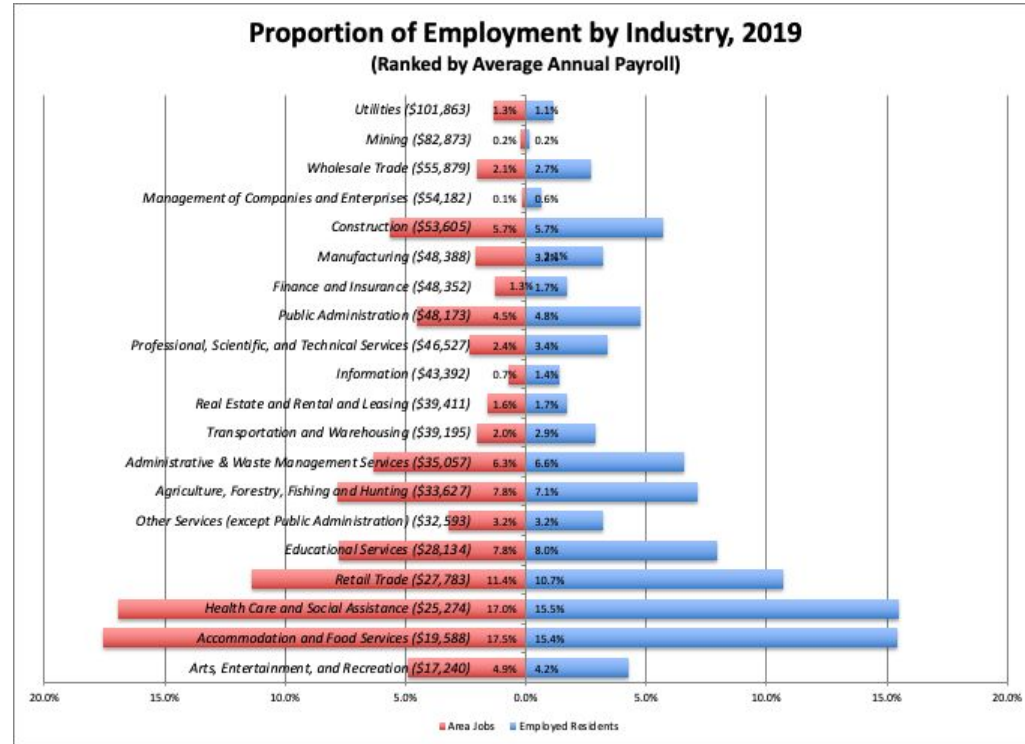
- Lithium Valley opportunity
- Major infrastructure investments

### Desigualdad socioeconómica

- Industrias de bajos salarios
- Agricultura tóxica y reducción del Salton Sea

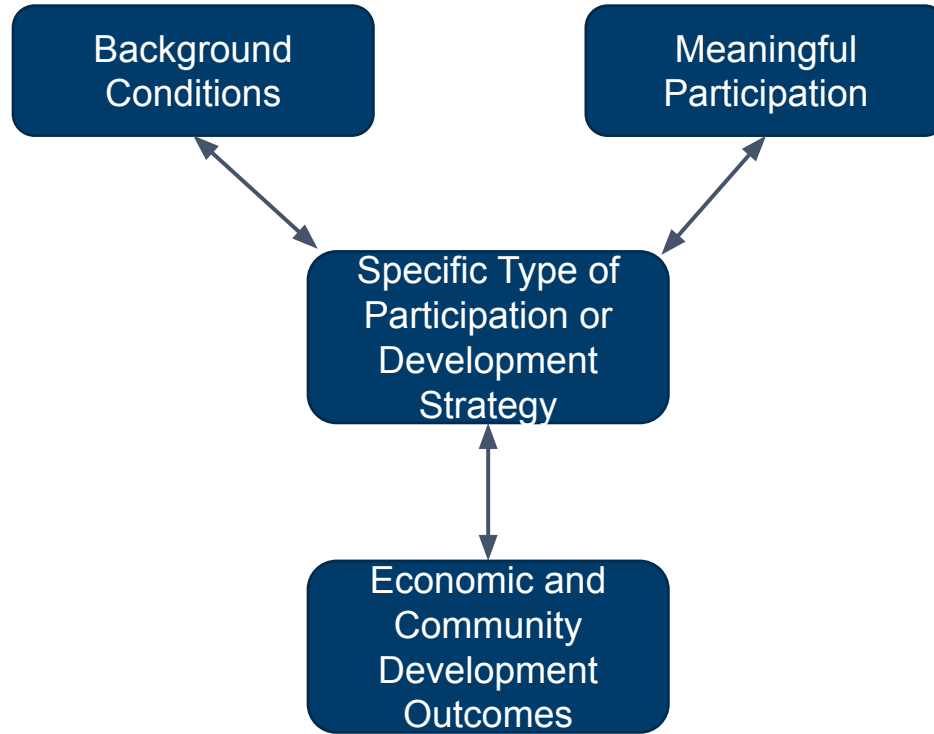
### Pero...

- Oportunidad de Lithium Valley
- Grandes inversiones en infraestructura



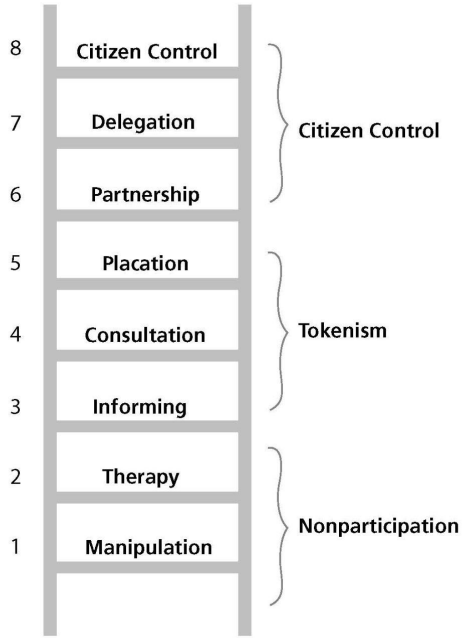
# OUTCOMES DEPEND ON PARTICIPATION

*LOS RESULTADOS DEPENDEN DE LA PARTICIPACIÓN*



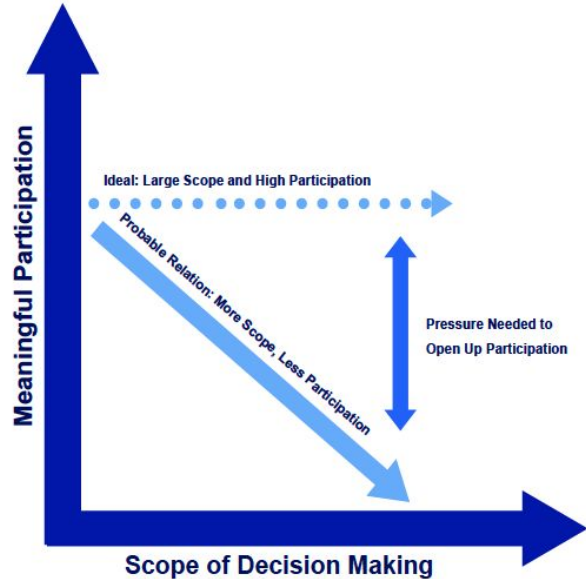
# PARTICIPATION NEEDS TO BE MEANINGFUL AND CONSEQUENTIAL

## LA PARTICIPACIÓN DEBE SER SIGNIFICATIVA Y CONSECUENTE

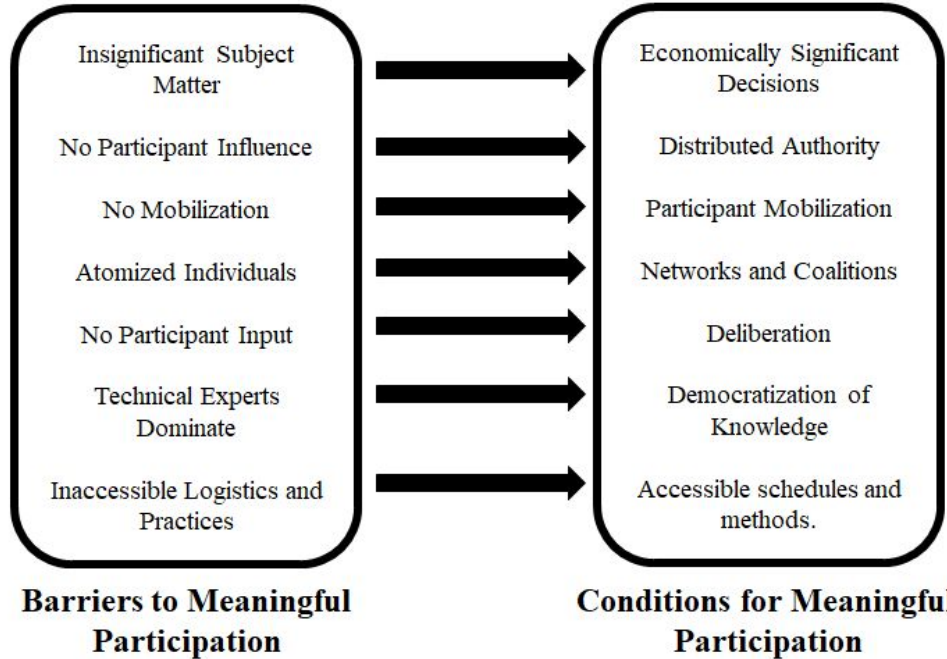


Arnstein's Ladder (1969)  
Degrees of Citizen Participation

FIGURE 3: INTERACTION BETWEEN SCOPE OF DECISION MAKING AND MEANINGFUL PARTICIPATION

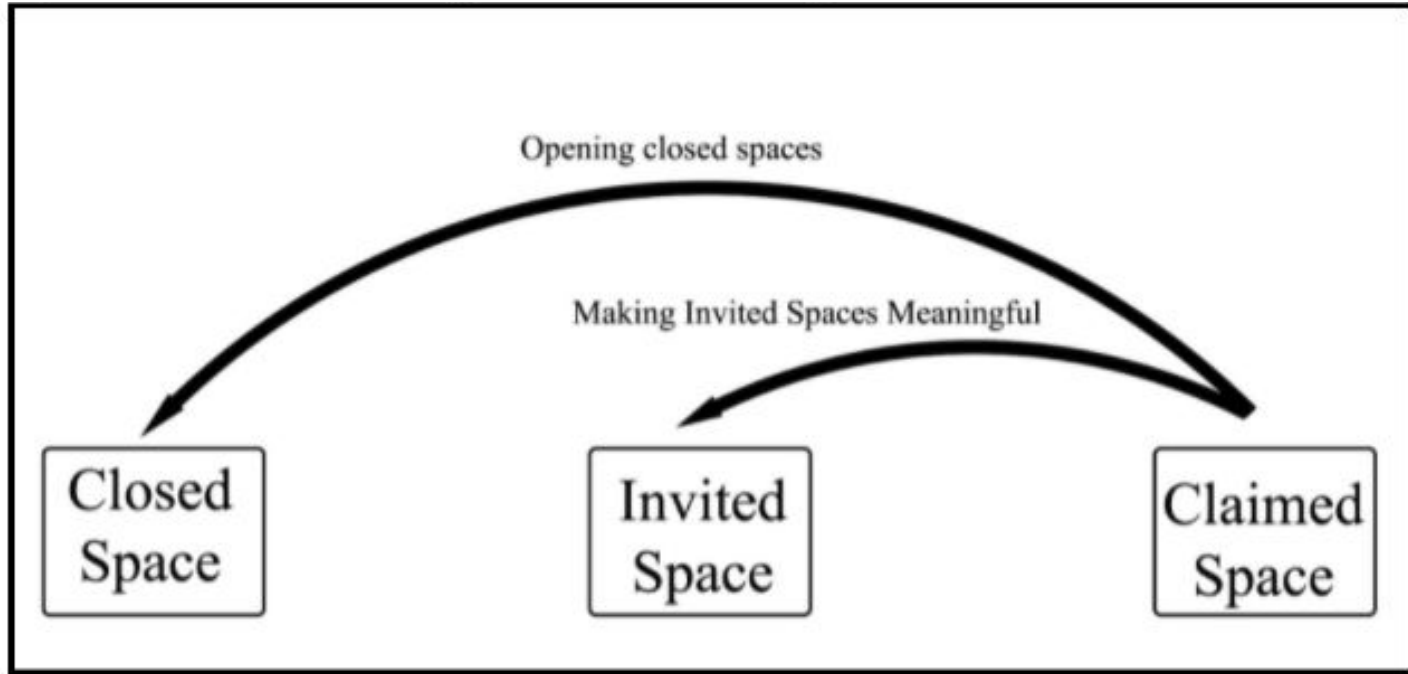


# Meaningful Participation + Meaningful Scope = Community Economic Empowerment



# CLAIMING DECISION MAKING SPACES IS VALUABLE

*RECLAMAR ESPACIOS PARA LA TOMA DE DECISIONES ES VALIOSO*



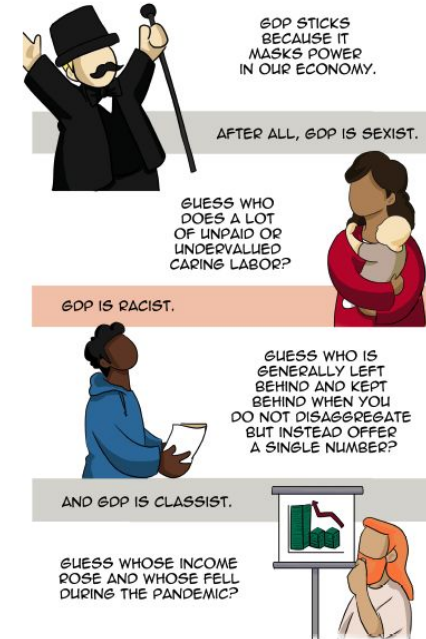
An Illustration of the Interaction Between Spaces of Decision Making



# INDICATORS: Tracking Progress and Building Relationships

## INDICADORES: Seguimiento del progreso y construcción de relaciones

- Growth alone cannot achieve sustainable and equitable development
- Data can help catalyze conversations and build cross-sector relationships, not just track progress
- *El crecimiento por sí solo no puede lograr un desarrollo sostenible y equitativo*
- *Los datos pueden ayudar a catalizar conversaciones y construir relaciones intersectoriales, no solo hacer un seguimiento del progreso*



# SOLIDARITY & KNOWLEDGE: Build diverse knowledge communities

*SOLIDARIDAD Y CONOCIMIENTO: Construir comunidades de conocimiento diversas*

<b>Salton Sea Region</b> <b>Inclusive</b> <b>Economy</b> <b>Indicator</b> <b>Framework</b>	Broad Indicators	Sub-Indicators
	1. EQUITY	Upward Mobility
		Reduction of Inequality
	2. INCLUSION	Participation in markets
		Decision-making
	3. GROWTH / STABILITY	Work Opportunity
		Stability
		Dignified Work
	4. SOCIO - ECOLOGICAL HEALTH	Ecological health
		Community Health
5. TRANSPORTATION / ACCESS TO DEVELOPMENT	Commute	
	Transportation & Infrastructure	

INDICATORS / Sub-Indicators	Data Measurement	Definition	Data Source	Smallest Scale
<b>1. EQUITY</b>				
1.1 Upward Mobility	Intergenerational education	% of population with a higher education than their parents	Community testimony	Survey population
	Access to financial services	% of households without a checking or savings account	FDIC	State level (or survey population)
	College educ. adults	% of adults (age 25 and over) who have completed a post-secondary certificate/degree	ACS	Census Tract
1.2 Reduction of Inequality	Income Ratio	Gap between highest & lowest income quintile	ACS; Gini Index	County / census tract
	Persons in poverty	% of persons in poverty	ACS	County / census tract
	Gender Equality	Poverty by gender; women-owned firms	ACS	Community Census Report; City
	Housing Cost Burden	% homeowners / renters whose housing is less than 30% of household income	ACS	Census tract
<b>2. INCLUSION / PARTICIPATION</b>				
2.1 Market Participation	Labor force participation ratio	Labor Force Status (working or seeking work)	ACS	Census Tract
	Business ownership	Number of firms owned by gender (men/women), minority (minority/non-minority)	ACS	City
2.2 Decision - making	Free, prior, & informed consent	Only available from community surveys regarding a specific development project	Community testimony	Survey population
	Multi-lingual consultations	Available from community surveys regarding a specific development project	Community testimony	Survey population

INDICATORS / Sub-Indicators	Data Measurement	Definition	Data Source	Smallest Scale
<b>3. GROWTH / STABILITY</b>				
3.1 Work opportunity	Employment rate	% of adults age 20-64 employed	ACS	Census Tract
	Job growth	% 1-year change in the number of jobs, within a 5-mile radius	CA EDD	County
	Job availability	Number of jobs per 1,000 people, within a 5-mile radius	LODES, Census	Census Tract
3.2 Stability	Growth rate average per capital income	Year-to-year change in median household income	ACS	Census Tract
	Union representation	Number of affiliated local unions and their members by county	BLS; Inland Empire Labor Council (AFL-CIO); California Labor Federation	County
	Year-to-year GDP	Yearly GDP by county (metro and other areas)	BEA	County
3.3 Dignified Work	Min. basic Income	% of families with income over 200% of the federal poverty level	ACS	Census Tract
	Job quality	% of high paying jobs, within a 5-mile radius	LODES, Census	Census Tract
	Living wage	% of population by county making less than the corresponding living wage	Calculated using BLS data and the MIT living wage calculator	County
	Per capita income	Median income	ACS, Census	Census Tract
	Life expectancy at birth	Life expectancy at birth by state and census tract	CDC	Census Tract

INDICATORS / Sub-Indicators	Data Measurement	Definition	Data Source	Smallest Scale
<b>4. SOCIO - ECOLOGICAL HEALTH</b>				
4.1 Ecological Health	Air quality	Annual mean concentration of PM 2.5	Cal/EPA; "bucket brigades"	County (and sub-county data)
	Salton Sea salinity	Salinity measurement; water quality statistics	CA NRA; Salton Sea Management Program	Salton Sea
	Salton Sea biodiversity loss	Number of species; populations size of species	CA NRA; Salton Sea Management Program	Salton Sea
4.2 Community Health	Percentage of population with respiratory disease	Prevalence of asthma (metropolitan area).	CDC, HARC	Metropolitan and Micropolitan Statistical Areas
	Water Accessibility	Physical Vulnerability to Water Outages; Water Quality; Water affordability	OEHHA (Cal HRTW 1.0 Report & Data Tool)	Community Water System
	Access to Healthcare	Number of locations providing basic medical services per 1,000 population within 5-mile radius	CDC, Census	Census Tract
	Years of life lost	Years of potential life lost	CDC, FRED, Census	County

INDICATORS / Sub-Indicators	Data Measurement	Definition	Data Source	Smallest Scale
-----------------------------	------------------	------------	-------------	----------------

### 5. TRANSPORTATION / GEOGRAPHICAL ACCESS TO DEVELOPMENT

5.1 Commute	Public transportation hours of operation	Number of hours public transportation is in operation	RTA; ICTC	County
	Commute time	% of workers whose commute time is less than 30 minutes	ACS	Census Tract
5.2 Infrastructure	Access to public transport	% of population that is within one mile buffer of a fixed route transit or rail stop	Center for Neighborhood Technology	Zip code
	Vehicle availability	% of households with at least 1 vehicle or 1 vehicle per worker	ACS	Census Tract
	Percentage of household with internet	Number of households per 1000 with high-speed internet	FCC	County

## KEY POINTS

The Salton Sea region faces development challenges, but also promising opportunities

Benefitting from these opportunities requires not 'business as usual', but stressing equitable, inclusive and sustainable development

This will require multi-stakeholder strategies with meaningful participation of the most marginalized and vulnerable residents of the region

Indicators can be a useful way to track progress and build accountability

Progress from here depends on collective dialogue and action

## PUNTOS CLAVE

La región de Salton Sea enfrenta desafíos de desarrollo, pero también oportunidades prometedoras

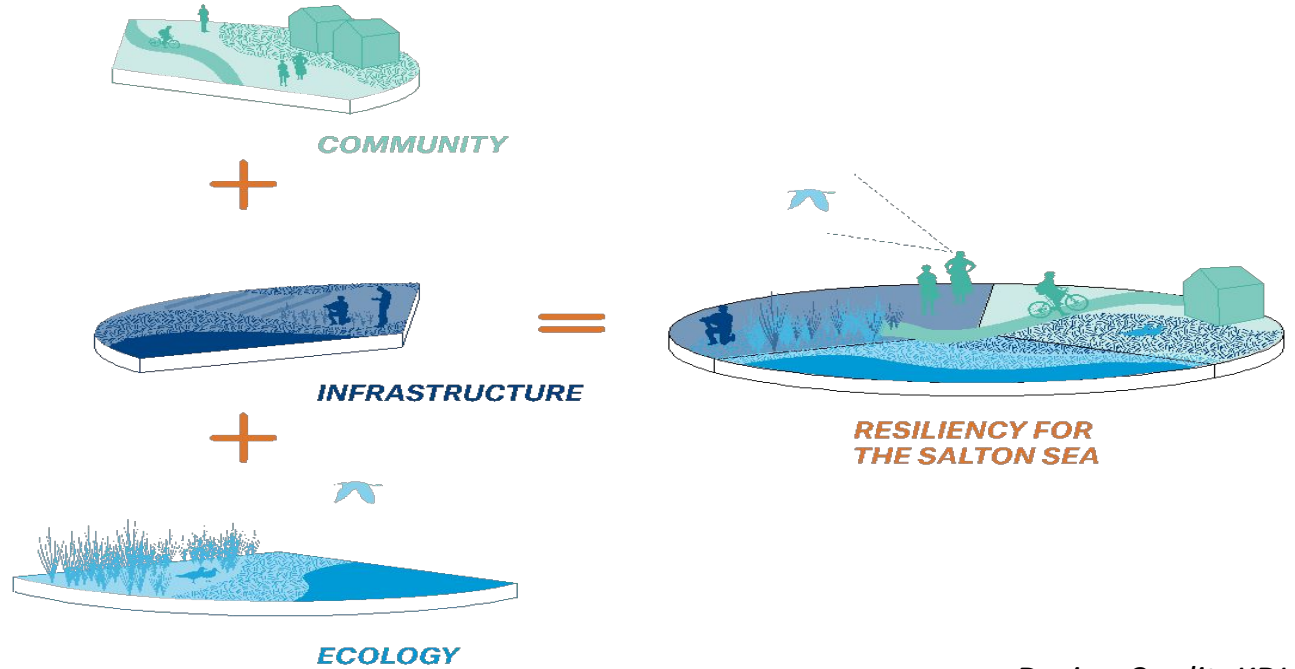
Beneficiarse de estas oportunidades no requiere "negocios como de costumbre", sino enfatizar el desarrollo equitativo, inclusivo y sostenible.

Esto requerirá estrategias de múltiples partes interesadas con una participación significativa de los residentes más marginados y vulnerables de la región.

Los indicadores pueden ser una forma útil de seguir el progreso y generar responsabilidad

El progreso a partir de aquí depende del diálogo y la acción colectivos

# Implications for the approach to the Salton Sea



Design Credit: KDI



# Application

<b>Salton Sea Region Inclusive Economy Framework</b>	<b>Broad Criteria</b>	<b>Sub-Criteria</b>
	<b>1. EQUITY</b>	Upward Mobility Reduction of Inequality
	<b>2. INCLUSION</b>	Participation in markets <b>Decision-making</b>
	<b>3. GROWTH / STABILITY</b>	Work Opportunity Stability Dignified Work
	<b>4. SOCIO - ECOLOGICAL HEALTH</b>	Ecological health Community Health
	<b>5. TRANSPORTATION / ACCESS TO DEVELOPMENT</b>	Commute Transportation & Infrastructure

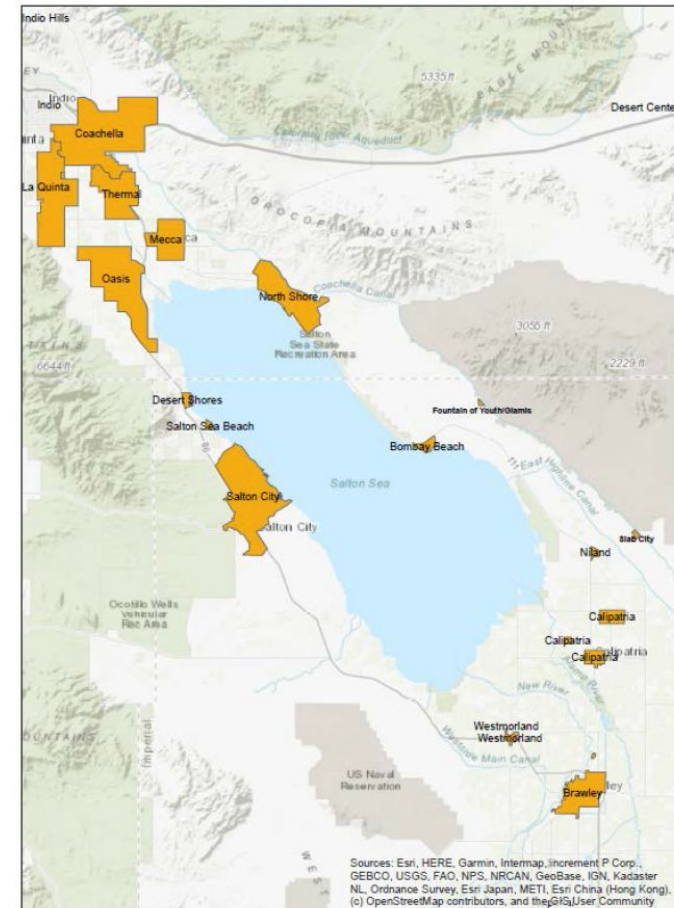
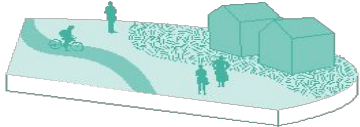


Figure 1. Map of the Salton Sea and all nearby communities.

# Implications for the approach to the Salton Sea

# Criteria 2: INCLUSION

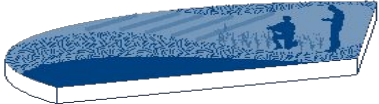
Play, camping, art, entrepreneurship, good jobs



COMMUNITY



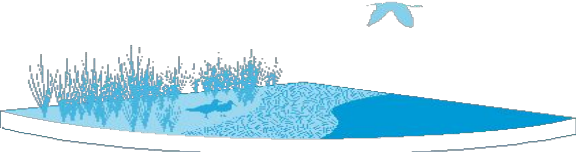
Multi-modal transportation access, pavement, sidewalks, lights, water, walking trails, electric charging stations, broadband, electric grid stability



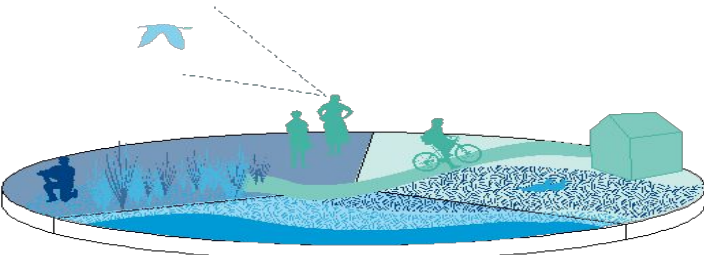
INFRASTRUCTURE



Dust suppression, habitat, shade, vegetation



ECOLOGY



RESILIENCY FOR THE SALTON SEA

## Implications for the approach to the Salton Sea

# Projects that advance equity, growth/stability, socio-ecological health, transportation/access



A green bridge links the community of North Shore to the Salton Sea Yacht Club (the only community center serving this population with after school programs, fitness activities, and summer cooling center).

Implications for the approach to the Salton Sea

# Projects that advance equity, growth/stability, socio-ecological health, transportation/access



*Salton Sea trailhead at the North Shore Beach & Yacht Club programmed with art, vegetation, solar shade structures, and electric vehicle charging stations*

Implications for the approach to the Salton Sea

# Projects that advance equity, growth/stability, socio-ecological health, transportation/access



*Trail link between Northshore Yacht Club and Salton Sea State Park with multi-benefit elements like shade, dust suppression, camping, marketplace for entrepreneurs, and broadband tower.*

Implications for the approach to the Salton Sea

# Key Points

- ❑ The process has the ability to determine levels of inclusivity & meaningful engagement
- ❑ Indicators for the sake of indicators will not yield the results we are seeking; a couple question to ask is who can/will adopt and how can they be applied?
- ❑ We need to stop doing projects to meet a mandate or liability, instead we need to think of every project as an opportunity to improve someone's quality of life—only then will we realize the intersectionality of issues and begin integrating ourselves as a piece of a larger puzzle that requires better integration between and among agencies and communities in order to complete



**THANK YOU! ¡GRACIAS!**

[CBENNER@UCSC.EDU](mailto:CBENNER@UCSC.EDU)

<https://solidarityeconomics.org/>

[silvia@alianzacv.org](mailto:silvia@alianzacv.org)

<https://alianzacv.org/>