

DOCKETED

Docket Number:	21-AFC-02
Project Title:	Gem Energy Storage Center
TN #:	242784
Document Title:	Att DA52-3_Wetland Delineation_Part 5 of 5
Description:	N/A
Filer:	Elizabeth Diaz
Organization:	Golder Associates
Submitter Role:	Applicant Consultant
Submission Date:	4/25/2022 2:59:12 PM
Docketed Date:	4/25/2022

PL-01 General Photo Log 3.1

Location Ephemeral Drainage 44

Photo 1

Lat/Long of Photo 34.89309235, -118.29121162

Direction South



Photo 2

Lat/Long of Photo 34.89309235, -118.29121162

Direction South



Photo 3

Lat/Long of Photo 34.89309235, -118.29121162

Direction South



Photo 4

Lat/Long of Photo 34.89309235, -118.29121162

Direction SouthEast



Photo 5

Lat/Long of Photo	34.89309235, -118.29121162
Direction	SouthEast



Photo 6

Lat/Long of Photo	34.89309235, -118.29121162
Direction	SouthEast



Photo 7

Lat/Long of Photo	34.89309235, -118.29121162
Direction	East



Location Ephemeral Drainage 45

Photo 1

Lat/Long of Photo	34.882095, -118.301300
-------------------	------------------------

Direction SouthEast



Photo 2

Lat/Long of Photo	34.891984, -118.301321
-------------------	------------------------

Direction SouthEast



Photo 3

Lat/Long of Photo 34.881966, -118.301402

Direction South



Photo 4

Lat /Long of Photo 34.881905, -118.301281

Direction SouthWest



Photo 5

Lat/Long of Photo 34.881762, -118.301469

Direction SouthWest



Photo 6

Lat/Long of Photo 34.881696, -118.30147

Direction South



Photo 7

Lat/Long of Photo 34.881994, -118.300385

Direction SouthWest



Photo 8

Lat/Long of Photo 34.881994, -118.300385

Direction SouthWest



Photo 9

Lat/Long of Photo 34.881867, -118.300565

Direction SouthWest



Photo 10

Lat/Long of Photo 34.881811, -118.30068

Direction South



Photo 11

Lat/Long of Photo 34.881773, -118.300753

Direction SouthWest

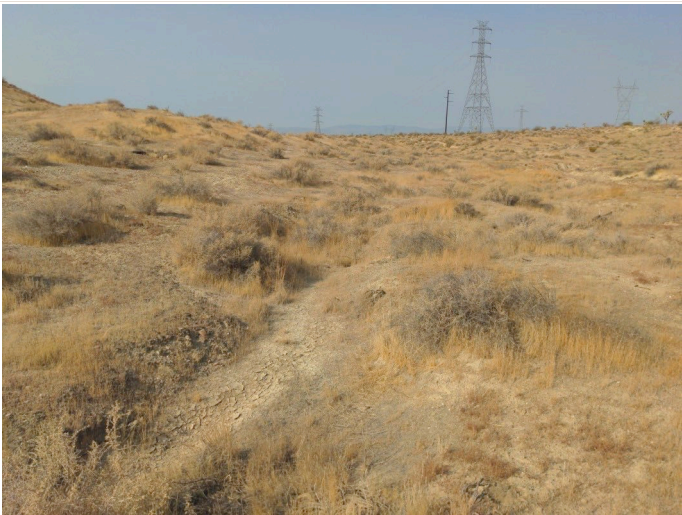


Photo 12

Lat/Long of Photo 34.881748, -118.300912

Direction SouthWest

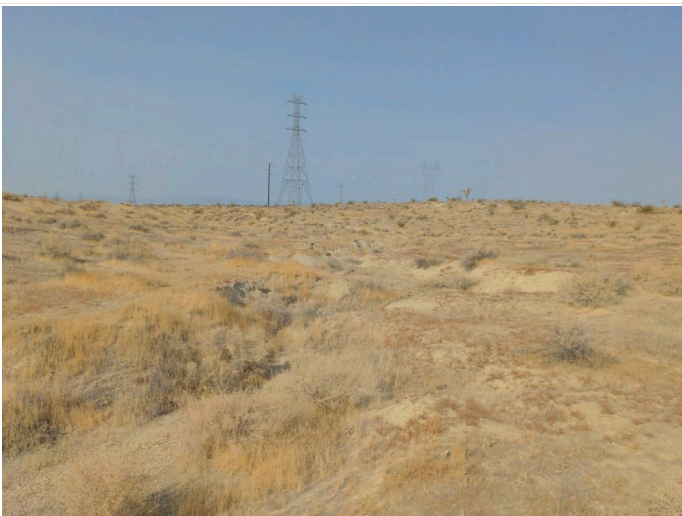


Photo 13

Lat/Long of Photo 34.881782, 118.301042

Direction South



Photo 14

Lat/Long of Photo 34.881654, -118.301077

Direction West



Photo 15

Lat/Long of Photo34.881483, --118.301564

DirectionSouth



Photo 16

Lat/Long of Photo34.881445, -118.30130

DirectionSouthWest



Photo 17

Lat/Long of Photo 34.881417, -118.30142

Direction SouthWest



Photo 18

Lat/Long of Photo 34.881349, -118.301595

Direction SouthWest



Photo 19

Lat/Long of Photo 34.881312, -118.301623

Direction SouthEast



Photo 20

Lat/Long of Photo 34.881235, -118.301677

Direction SouthWest



Photo 21

Lat/Long of Photo 34.881125, -118.301815

Direction North



Photo 22

Lat/Long of Photo 34.881063, -118.301858

Direction South



Photo 23

Lat/Long of Photo 34.881039, -118.301969

Direction SouthEast



Photo 24

Lat/Long of Photo 34.880744, -118.301868

Direction SouthEast



Photo 25

Lat/Long of Photo 34.89309235, -118.29121162

Direction South



Photo 26

Lat/Long of Photo 34.880091, 118.301751

Direction South



PL-01 General Photo Log 3.1

LocationEphemeral Drainage 46

Photo 1

Lat/Long of Photo34.86230185, -118.40319101

DirectionNorthWest



Photo 2

Lat/Long of Photo34.86243072, -118.40317494

DirectionNorthWest



Photo 3

Lat/Long of Photo 34.86258784, -118.40325167

Direction NorthWest

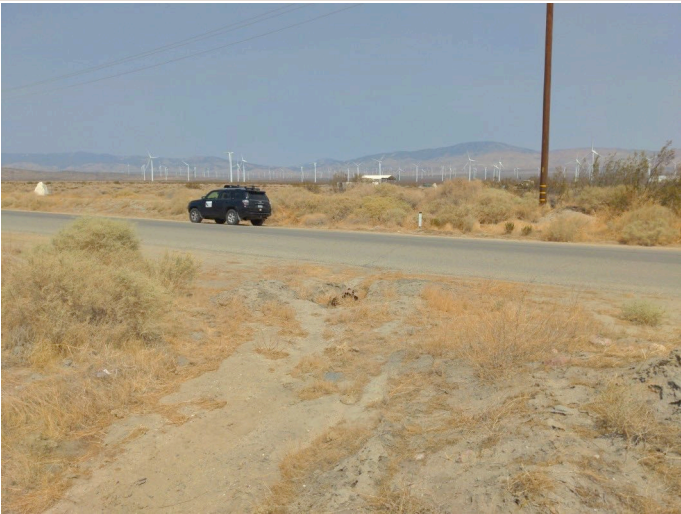


Photo 4

Lat/Long of Photo 34.86271806, -118.40335215

Direction SouthEast



Location Ephemeral Drainage 47

Photo 1

Lat/Long of Photo 34.86297627, -118.42358541

Direction South



Photo 2

Lat/Long of Photo	34.86282139, -118.42356801
-------------------	----------------------------

Direction	South
-----------	-------



Photo 3

Lat/Long of Photo	34.86256048, -118.42358966
Direction	South



PL-01 General Photo Log 3.1

LocationEphemeral Drainage 48

Photo 1

Lat/Long of Photo34.86032916, -118.44019528

DirectionNorthWest



Photo 2

Lat/Long of Photo34.86033432, -118.44015479

DirectionWest



Photo 3

Lat/Long of Photo 34.86050001, -118.44038738

DirectionNorthWest



Photo 4

Lat/Long of Photo 34.86066913, -118.44048397

DirectionNorth



Photo 5

Lat/Long of Photo 34.86088747, -118.44050816

Direction North



Photo 6

Lat/Long of Photo 34.86110068, -118.44056576

Direction NorthWest



Photo 7

Lat/Long of Photo 34.86125420, -118.44071964

Direction NorthWest



Photo 8

Lat/Long of Photo 34.86143215, -118.44093918

Direction North

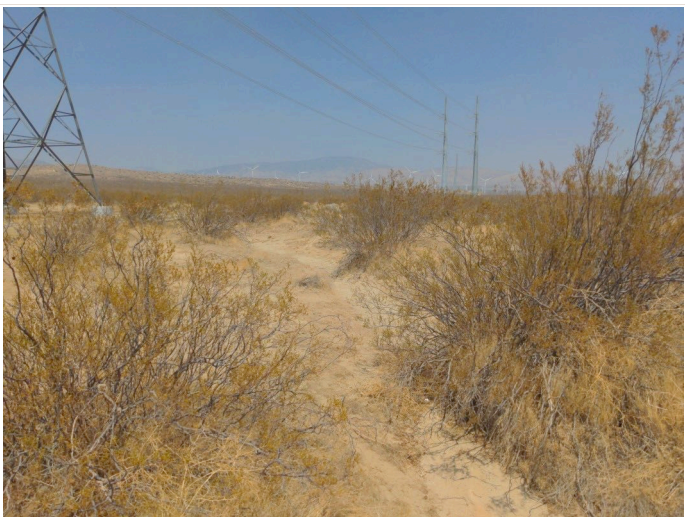


Photo 9

Lat/Long of Photo 34.86150623, -118.44098414

Direction North



Photo 10

Lat/Long of Photo 34.86158041, -118.44103436

Direction North



PL-01 General Photo Log 3.1

Location Ephemeral Drainage 49

Photo 1

Lat/Long of Photo 34.866586, -118.423533

Direction South



Photo 2

Lat/Long of Photo 34.866373, -118.423504

Direction South



Photo 3

Lat/Long of Photo	34.866044, -118.423502
Direction	South



Photo 4

Lat/Long of Photo	34.865942, -118.423528
Direction	North

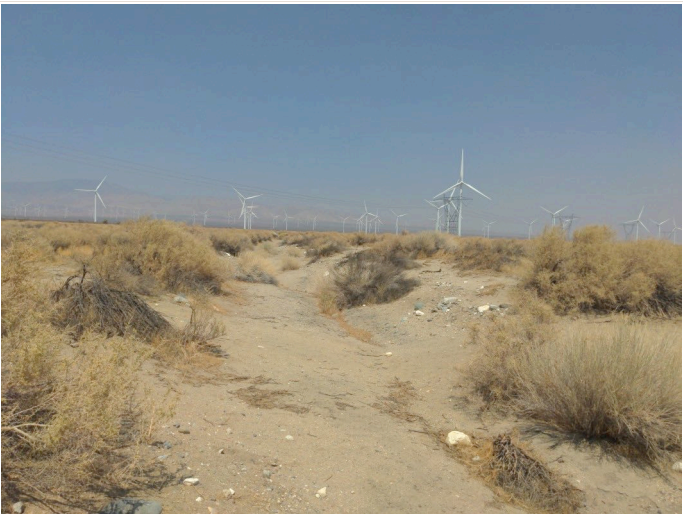


Photo 5

Lat/Long of Photo34.865874, -118.423511

DirectionSouth



Location	Ephemeral Drainage 50
----------	-----------------------

Photo 1

Lat/Long of Photo	34.866632, -118.415131
-------------------	------------------------

Direction	SouthEast
-----------	-----------



Photo 2

Lat/Long of Photo	34.866455, -118.414828
-------------------	------------------------

Direction SouthEast



Photo 3

Lat/Long of Photo 34.86641, -118.414727

DirectionSouth



Photo 4

Lat/Long of Photo 34.866418, -118.41479

DirectionEast



Photo 5

Lat/Long of Photo 34.866598, -118.41477

Direction SouthEast



Photo 6

Lat/Long of Photo 34.866726, -118.414672

Direction SouthWest



Photo 7

Lat/Long of Photo 34.866663, -118.414752

Direction South



Photo 8

Lat/Long of Photo 34.866335, -118.414757

Direction South



Photo 9

Lat/Long of Photo 34.866193, -118.414745

Direction SouthEast



Photo 10

Lat/Long of Photo 34.866148, -118.414755

Direction South



PL-01 General Photo Log 3.1

Location Ephemeral Drainage 51

Photo 1

Lat/Long of Photo 34.866702, -118.40835

Direction South



Photo 2

Lat/Long of Photo 34.866515, -118.40834

Direction South



Photo 3

Lat/Long of Photo 34.866385, -118.408385

Direction South



Photo 4

Lat/Long of Photo 34.866706, -118.408657

Direction SouthEast



Photo 5

Lat/Long of Photo 34.866572, -118.408583

Direction East



Photo 6

Lat/Long of Photo 34.866507, -118.408451

Direction SouthEast



Photo 7

Lat/Long of Photo 34.866454, -118.408401

Direction SouthEast



Photo 8

Lat/Long of Photo 34.866319, -118.408367

Direction South



Photo 9

Lat/Long of Photo	34.86621, -118.408378
Direction	South



Photo 10

Lat/Long of Photo	34.86606, -118.408367
Direction	South



PL-01 General Photo Log 3.1

LocationEphemeral Drainage 52

Photo 1

Lat/Long of Photo34.866141, -118.40814

DirectionSouth



Photo 2

Lat/Long of Photo34.866115, -118.408155

DirectionSouth



Photo 3

Lat/Long of Photo 34.866037, -118.408181

Direction SouthEast



Photo 4

Lat/Long of Photo 34.865981, -118.408186

Direction SouthEast



Location	Ephemeral Drainage 53
----------	-----------------------

Photo 1

Lat/Long of Photo	34.866770, -118.403645
-------------------	------------------------

Direction South



Photo 2

Description of Photo Point

Photo Type	Other
------------	-------

Lat/Long of Photo	34.866713, -118.403647
-------------------	------------------------

Direction SouthEast



Photo 3

Lat/Long of Photo 34.866650, -118.403598

Direction SouthEast



Photo 4

Lat/Long of Photo 34.866646, -118.403529

Direction SouthEast



Photo 5

Lat/Long of Photo 34.866557, -118.403447

Direction East



Photo 6

Lat/Long of Photo 34.866561, -118.403335

Direction SouthEast



Photo 7

Lat/Long of Photo 34.866507, -118.403262

Direction South



Photo 8

Lat/Long of Photo 34.866512, -118.403230

Direction SouthWest



Photo 9

Lat/Long of Photo 34.866464, -118.403263

Direction South



Photo 10

Lat/Long of Photo 34.866386, -118.403224

Direction NorthWest



Photo 11

Lat/Long of Photo 34.86159030, -118.44101314

Direction West



Photo 12

Lat/Long of Photo 34.866385, -118.403259

Direction NorthEast



Photo 13

Lat/Long of Photo 34.866372, -118.403218

Direction SouthEast



Photo 14

Lat/Long of Photo 34.866409, -118.403702

Direction East



Photo 15

Lat/Long of Photo 34.866402, -118.403663

Direction North



PL-01 General Photo Log 3.1

Location	Ephemeral Drainage 54
----------	-----------------------

Photo 1

Lat/Long of Photo	34.869947, -118.401893
-------------------	------------------------

Direction	East
-----------	------



Photo 2

Lat/Long of Photo	34.869979, -118.401653
-------------------	------------------------

Direction	East
-----------	------



Photo 3

Lat/Long of Photo 34.869977, -118.401331

Direction East



Photo 4

Lat/Long of Photo 34.869993, -118.401318

Direction SouthEast



Photo 5

Lat/Long of Photo 34.869920, -118.401264

Direction SouthEast



Photo 6

Lat/Long of Photo 34.869788, -118.401136

Direction SouthEast



Photo 7

Lat/Long of Photo 34.869964, -118.401247

Direction East



Photo 8

Lat/Long of Photo 34.869961, -118.401081

Direction East



Photo 9

Lat/Long of Photo 34.869966, --118.400773

Direction East



Photo 10

Lat/Long of Photo 34.869998, -118.400501

Direction SouthEast



Photo 11

Lat/Long of Photo 34.869971, -118.400107

Direction West



Photo 12

Lat/Long of Photo 34.869976, 118.399922

Direction East



Photo 13

Lat/Long of Photo 34.869976, -118.399683

Direction East



PL-01 General Photo Log 3.1

Location Ephemeral Drainage 55

Photo 1

Lat/Long of Photo 34.870278, -118.410898

Direction SouthEast



Photo 2

Lat/Long of Photo 34.87018822, -118.41087021

Direction SouthEast



Photo 3

Lat/Long of Photo	34.87002092, -118.41075153
Direction	South



Photo 4

Lat/Long of Photo	34.86989997, -118.41070930
Direction	SouthEast



Photo 5

Lat/Long of Photo	34.86983332, -118.41065558
Direction	South



Photo 6

Lat/Long of Photo	34.86969785, -118.41055261
Direction	SouthEast



Photo 7

Lat/Long of Photo	34.869632, -118.410434
Direction	SouthEast



Photo 8

Lat/Long of Photo	34.86981807, -118.41042365
Direction	SouthEast



Photo 9

Lat/Long of Photo	34.86976678, -118.41038063
Direction	South



Photo 10

Lat/Long of Photo	34.870284, -118.41067
Direction	South



Photo 11

Lat/Long of Photo	34.870235, -118.410687
Direction	SouthEast



Photo 12

Lat/Long of Photo	34.870141, -118.410691
Direction	South



Photo 13

Lat/Long of Photo 34.870236, -118.410609

Direction South



Photo 14

Lat/Long of Photo 34.870145, -118.410527

Direction South



Photo 15

Lat/Long of Photo 34.869908, -118.410782

Direction East



Photo 16

Lat/Long of Photo 34.869913, -118.410534

Direction East



Photo 17

Lat/Long of Photo34.869919, -118.410347

DirectionSouthEast



Photo 18

Lat/Long of Photo34.869945, -118.41030625

DirectionSouthEast



Photo 19

Lat/Long of Photo 34.87013306, -118.41039248

Direction SouthEast



Photo 20

Lat/Long of Photo 34.869961, -118.41035

Direction South



Photo 21

Lat/Long of Photo 34.86995682, -118.41032020

Direction SouthEast



Photo 22

Lat/Long of Photo 34.86989376, -118.41014911

Direction South



Photo 23

Lat/Long of Photo 34.86971448, -118.41016951

Direction SouthEast



Photo 24

Lat/Long of Photo 34.869612, -118.410101

Direction SouthEast



Location	Ephemeral Drainage 56
----------	-----------------------

Photo 1

Lat/Long of Photo	34.869885, -118.412017
-------------------	------------------------

Direction East



Photo 2

Lat/Long of Photo	34.869885, -118.411892
-------------------	------------------------

Direction SouthEast



Photo 3

Lat/Long of Photo 34.869799, -118.411715

DirectionSouth



Photo 4

Lat/Long of Photo 34.869661, -118.411667

DirectionSouthEast



PL-01 General Photo Log 3.1

Location Ephemeral Drainage 57

Photo 1

Lat/Long of Photo 34.870250, -118.414907

Direction SouthEast



Photo 2

Lat/Long of Photo 34.870170, -118.414723

Direction SouthEast



Photo 3

Lat/Long of Photo 34.870096, -118.414473

Direction SouthEast



Photo 4

Lat/Long of Photo 34.869942, -118.414232

Direction SouthEast



Photo 5

Lat/Long of Photo 34.869898, -118.414186

Direction East



Photo 6

Lat/Long of Photo 34.869912, -118.413891

Direction East



PL-01 General Photo Log 3.1

LocationEphemeral Drainage 58

Photo 1

Lat/Long of Photo34.867969, -118.423333

DirectionSouth



Photo 2

Lat/Long of Photo34.867819, -118.42349

DirectionSouth



Photo 3

Lat/Long of Photo 34.867706, -118.423519

Direction SouthEast



Photo 4

Lat/Long of Photo 34.867342, -118.423479

Direction South



Photo 5

Lat/Long of Photo 34.867174, -118.423517

Direction South



Photo 6

Lat/Long of Photo 34.866919, -118.423495

Direction North



PL-01 General Photo Log 3.1

LocationNon-jurisdictional Roadside Ditch 1

Photo 1

Lat/Long of Photo34.88656029, -118.39679257

DirectionEast



Photo 2

Lat/Long of Photo34.88656029, -118.39679257

DirectionEast



Photo 3

Lat/Long of Photo	34.88656029, -118.39679257
Direction	SouthEast



Photo 4

Lat/Long of Photo	34.88656029, -118.39679257
Direction	South



Photo 5

Lat/Long of Photo	34.88656029, -118.39679257
Direction	South



PL-01 General Photo Log 3.1

LocationNon-jurisdictional Roadside Ditch 2

Photo 1

Lat/Long of Photo34.86354871, -118.30862258

DirectionNorth



Photo 2

Lat/Long of Photo34.86354871, -118.30862258

DirectionSouth



PL-01 General Photo Log 3.1

LocationNon-jurisdictional Roadside Ditch 3

Photo 1

Lat/Long of Photo34.86354871, -118.30862258

DirectionEast



Photo 2

Lat/Long of Photo34.86354871, -118.30862258

DirectionSouth



PL-01 General Photo Log 3.1

LocationNon-jurisdictional Roadside Ditch 4

Photo 1

Lat/Long of Photo34.988192781, -188.30896860

DirectionNorth



Photo 2

Lat/Long of Photo34.88217343, -118.30895301

DirectionNorth



Photo 3

Lat/Long of Photo	34.88248078, -118.30898553
Direction	North



Photo 4

Lat/Long of Photo	34.88270364, -118.30900289
Direction	North



Photo 5

Lat/Long of Photo	34.88287074, -118.30899648
Direction	North



Photo 6

Lat/Long of Photo	34.88305249, -118.30898275
Direction	North



Photo 7

Lat/Long of Photo 34.883569, -118.308982

Direction South



Photo 8

Lat/Long of Photo 34.88352108, -118.30896314

Direction South



PL-01 General Photo Log 3.1

Location	Non-jurisdictional Swale 1
----------	----------------------------

Photo 1

Lat/Long of Photo	34.89271537, -118.29144983
-------------------	----------------------------

Direction	North
-----------	-------



Photo 2

Lat/Long of Photo	34.89271537, -118.29144983
-------------------	----------------------------

Direction	North
-----------	-------



Photo 3

Lat/Long of Photo	34.89271537, -118.29144983
Direction	North



PL-01 General Photo Log 3.1

Location	Non-jurisdictional Swale 2
----------	----------------------------

Photo 1

Lat/Long of Photo	34.892095, -118.343503
-------------------	------------------------

Direction	SouthEast
-----------	-----------



Photo 2

Lat/Long of Photo	34.892100, -118.343403
-------------------	------------------------

Direction	SouthEast
-----------	-----------



Photo 3

Lat/Long of Photo 34.892438, -118.343669

Direction NorthWest



Photo 4

Lat/Long of Photo 34.892445, -118.343536

Direction NorthWest



PL-01 General Photo Log 3.1

LocationNon-jurisdictional Swale 3

Photo 1

Lat/Long of Photo34.891837, -118.351191

DirectionNorth



Photo 2

Lat/Long of Photo34.892148, -118.351141

DirectionNorthWest



Photo 3

Lat/Long of Photo 34.892175, -118.350916

Direction West



PL-01 General Photo Log 3.1

LocationNon-jurisdictional Swale 4

Photo 1

Lat/Long of Photo34.892074, -118.371987

DirectionSouthEast



Photo 2

Lat/Long of Photo34.892156, -118.371987

DirectionSouthEast



Photo 3

Lat/Long of Photo 34.891939, -118.29144983

Direction SouthEast



Photo 4

Lat/Long of Photo 34.891768, -118.371754

Direction SouthEast



Photo 5

Lat/Long of Photo34.891932, -118.371889

DirectionNorth



PL-01 General Photo Log 3.1

LocationNon-jurisdictional Swale 5

Photo 1

Lat/Long of Photo34.891619, -118.373758

DirectionNorthWest



Photo 2

Lat/Long of Photo34.891863, -118.374136

DirectionNorthWest



PL-01 General Photo Log 3.1

LocationNon-jurisdictional Swale 6

Photo 1

Lat/Long of Photo34.881329, -118.308752

DirectionNorthEast



Photo 2

Lat/Long of Photo34.881260, -118.308789

DirectionSouthWest



Photo 3

Lat/Long of Photo34.881178, -118.308886

DirectionSouthWest



PL-01 General Photo Log 3.1

LocationNon-jurisdictional Swale 7

Photo 1

Lat/Long of Photo34.88297905, -118.30906234

DirectionSouth



Photo 2

Lat/Long of Photo34.88271849, -118.30919509

DirectionSouth



Photo 3

Lat/Long of Photo	34.88262600, -118.30924356
Direction	SouthEast



Photo 4

Lat/Long of Photo	34.88225578, -118.30920467
Direction	North



PL-01 General Photo Log 3.1

LocationNon-jurisdictional Swale 8

Photo 1

Lat/Long of Photo34.889564, -118.291605

DirectionNorthEast



PL-01 General Photo Log 3.1

LocationNon-jurisdictional Swale 9

Photo 1

Lat/Long of Photo34.878448, -118.302739

DirectionSouth



PL-01 General Photo Log 3.1

LocationNon-jurisdictional Swale 10

Photo 1

Lat/Long of Photo34.878796, -118.302897

DirectionWest



Photo 2

Lat/Long of Photo34.87877, -118.303027

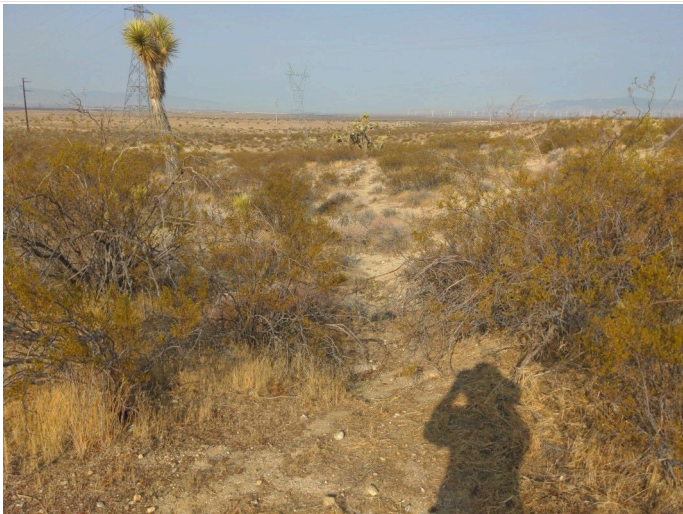
DirectionWest



Photo 3

Lat/Long of Photo34.878753, -118.303096

DirectionWest



PL-01 General Photo Log 3.1

LocationNon-jurisdictional Swale 11

Photo 1

Lat/Long of Photo34.863052, -118.399176

DirectionSouthEast



Photo 2

Lat/Long of Photo34.86305177, -118.39917608

DirectionSouthEast



Photo 3

Lat/Long of Photo	34.86293706, -118.39883946
Direction	SouthEast



Photo 4

Lat/Long of Photo	34.8627951, -118.39854006
Direction	NorthWest



PL-01 General Photo Log 3.1

LocationNon-jurisdictional Swale 12

Photo 1

Lat/Long of Photo34.86222005, -118.42072550

DirectionNorthWest



Photo 2

Lat/Long of Photo34.86224618, -118.42079726

DirectionNorth



Photo 3

Lat/Long of Photo	34.86255867, -118.42091625
Direction	South



PL-01 General Photo Log 3.1

LocationNon-jurisdictional Swale 13

Photo 1

Lat/Long of Photo34.86228039, -118.42260085

DirectionNorthWest



Photo 2

Lat/Long of Photo34.86238184, -118.42275401

DirectionNorthWest



Photo 3

Lat/Long of Photo34.86262052, -118.42293263

DirectionSouthEast



PL-01 General Photo Log 3.1

LocationNon-jurisdictional Swale 14

Photo 1

Lat/Long of Photo34.86228128, -118.42358445

DirectionNorthWest



Photo 2

Lat/Long of Photo34.86229039, -118.42362739

DirectionNorth



PL-01 General Photo Log 3.1

LocationNon-jurisdictional Swale 15

Photo 1

Lat/Long of Photo34.86227240, -118.42715091

DirectionNorthWest



Photo 2

Lat/Long of Photo34.86236073, -118.42727701

DirectionNorthWest



Photo 3

Lat/Long of Photo34.86256732, -118.42737912

DirectionSouthEastt



PL-01 General Photo Log 3.1

LocationNon-jurisdictional Swale 16

Photo 1

Lat/Long of Photo34.86227745, -118.43023826

DirectionNorthWest



Photo 2

Lat/Long of Photo34.86256453, -118.43038386

DirectionSouthEast



PL-01 General Photo Log 3.1

LocationNon-jurisdictional Swale 17

Photo 1

Lat/Long of Photo34.866414, -118.425751

DirectionSouth



Photo 2

Lat/Long of Photo34.866316, -118.425782

DirectionSouth



Photo 3

Lat/Long of Photo 34.866184, -118.425727

Direction South



Photo 4

Lat/Long of Photo 34.866004, -118.425674

Direction South



PL-01 General Photo Log 3.1

LocationNon-jurisdictional Swale 18

Photo 1

Lat/Long of Photo34.866581, -118.421254

DirectionSouth



Photo 2

Lat/Long of Photo34.866300, 118.421257

DirectionSouth



PL-01 General Photo Log 3.1

LocationNon-jurisdictional Swale 19

Photo 1

Lat/Long of Photo34.866724, -118.412542

DirectionSouth



Photo 2

Lat/Long of Photo34.866319, -118.412519

DirectionSouth



PL-01 General Photo Log 3.1

LocationNon-jurisdictional Swale 20

Photo 1

Lat/Long of Photo34.870139, -118.420481

DirectionSouthEast



Photo 2

Lat/Long of Photo34.870047, -118.42038

DirectionSouth



Photo 3

Lat/Long of Photo 34.869851, -118.420259

Direction East



Photo 4

Lat/Long of Photo 34.869814, -118.420045

Direction East



Photo 5

Lat/Long of Photo34.86982, -118.419917

DirectionNorthEast



PL-01 General Photo Log 3.1

LocationNon-jurisdictional Swale 21

Photo 1

Lat/Long of Photo34.869642, -118.421049

DirectionNorthEast



PL-01 General Photo Log 3.1

LocationNon-jurisdictional Swale 22

Photo 1

Lat/Long of Photo34.867994, -118.423176

DirectionNorthWest



Photo 2

Lat/Long of Photo 34.867952, -118.42309

Direction SouthEast



Photo 3

Lat/Long of Photo 34.867952, -118.42309

Direction SouthEast



PL-01 General Photo Log 3.1

LocationNon-jurisdictional Swale 23

Photo 1

Lat/Long of Photo34.866851, -118.423774

DirectionNorth



Photo 2

Lat/Long of Photo34.867015, --118.423755

DirectionSouth



Photo 3

Lat/Long of Photo 34.867086, -118.41040213

DirectionNorthWest



Photo 4

Lat/Long of Photo 34.867399, -118.41040213

DirectionNorthWest



PL-01 General Photo Log 3.1

LocationNon-jurisdictional Swale 24

Photo 1

Lat/Long of Photo34.867577, -118.423378

DirectionSouthEast



Photo 2

Lat/Long of Photo34.867409, -118.423282

DirectionSouthEast



ATTACHMENT C

Data Form



Beta Arid West Streamflow Duration Assessment Method

General site information

Project name or number: Hydrostor Gem Energy Storage Project		
Site code or identifier: Ephemeral Drainage 35	Assessor(s): Kris Alberts, Lorena Bernal	
Waterway name: N/A	Visit date: 8-17-2021	
Current weather conditions (check one) <input type="checkbox"/> Storm/heavy rain <input type="checkbox"/> Steady rain <input type="checkbox"/> Intermittent rain <input type="checkbox"/> Snowing <input type="checkbox"/> Cloudy (___ % cover) <input checked="" type="checkbox"/> Clear/Sunny	Notes on current or recent weather conditions (e.g., precipitation in previous week): Dry, hot, windy and sunny	Coordinates at downstream end (decimal degrees): Lat (N): 34.888500 Long (W): -118.326131 Datum: NAD 83
Surrounding land-use within 100 m (check one or two): <input type="checkbox"/> Urban/industrial/residential <input type="checkbox"/> Agricultural (farmland, crops, vineyards, pasture) <input type="checkbox"/> Developed open-space (e.g., golf course) <input type="checkbox"/> Forested <input checked="" type="checkbox"/> Other natural <input type="checkbox"/> Other:	Describe reach boundaries: Appears to originate from upland swale about 1/2 mile upgrade from the northwest, moves through the Project ROW, then dissipates into uplands within 1/2 mile to the southeast. The stretch through the Project ROW is 844 feet long.	
Mean channel width (m) 5 (measured between the tops of the banks)	Reach length (m): 40x width; min 40 m; max 200 m. 257	Enter photo ID, or check if completed Top down: ___x___ Mid down: ___x___ Mid up: ___x___ Bottom up: ___x___
Disturbed or difficult conditions (check all that apply): <input type="checkbox"/> Recent flood or debris flow <input type="checkbox"/> Stream modifications (e.g., channelization) <input type="checkbox"/> Diversions <input type="checkbox"/> Discharges <input checked="" type="checkbox"/> Drought <input type="checkbox"/> Vegetation removal/limitations <input type="checkbox"/> Other (explain in notes) <input type="checkbox"/> None	Notes on disturbances or difficult site conditions: Dirt road bisects drainage at two points.	
Observed hydrology: ___ % of reach with surface flow 100 % of reach with sub-surface or surface flow ___ # of isolated pools	Comments on observed hydrology: All indicators point to ephemeral flows only. Indicators included shelving, sediment sorting, drainage patterns, and an overall lack of vegetation in the OHWM. No water present at the time of the survey. No hydrophytic vegetation present.	

Site sketch:

A complete photo log of the entire drainage was taken, which shows the entire drainage and its surroundings much better than a sketch could.

1. Hydrophytic plant species


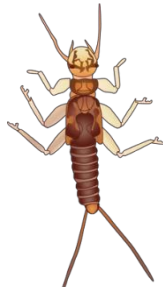

Record up to 5 hydrophytic plant species (FACW or OBL in the **Arid West** regional wetland plant list) within the assessment area: **within the channel or up to one half-channel width**. Explain in notes if species has an odd distribution (e.g., covers less than 2% of assessment area, long-lived species solely represented by seedlings, or long-lived species solely represented by specimens in decline), or if there is uncertainty about the identification. Enter photo ID, or check if photo is taken.

Check if applicable: ☒ No vegetation in assessment area ☒ No hydrophytes in assessment area

Species	Odd distribution?	Notes	Photo ID

Notes on hydrophytic vegetation:

2 and 3. Aquatic invertebrates

<p>2. How many aquatic invertebrates are quantified in a 15-minute search?</p> <p>Number of individuals quantified: <input checked="" type="checkbox"/> None <input type="checkbox"/> 1 to 19 <input type="checkbox"/> 20 +</p> <p>(Do not count mosquitos)</p> <p>Photo ID: _____</p>	<p>3. Is there evidence of aquatic stages of EPT (Ephemeroptera, Plecoptera and Trichoptera)?</p> <p>Yes <input type="radio"/> No <input checked="" type="radio"/></p> <div style="display: flex; justify-content: space-around; align-items: center;"> <div style="text-align: center;">  Ephemeroptera larva Image credit: Dieter Tracey </div> <div style="text-align: center;">  Plecoptera larva Image credit: Tracey Saxby </div> <div style="text-align: center;">  Trichoptera larva Image credit: Tracey Saxby </div> </div>
---	--

Notes on aquatic invertebrates:

4. Algal Cover

<p>Are algae found on the streambed?</p> <p><input type="checkbox"/> Check if <u>all</u> observed algae appear to be deposited from an upstream source.</p>	<p><input checked="" type="checkbox"/> Not detected <input type="checkbox"/> Yes, < 10% cover <input type="checkbox"/> Yes, ≥ 10% (check Yes in single indicator below)</p>	<p>Notes on algae cover:</p>	<p>Photo ID:</p>
--	--	------------------------------	------------------

5. Are single indicators observed?

Indicator	Present	Notes	Photo ID
Fish	<input type="checkbox"/> Yes <input checked="" type="checkbox"/> No, no fish <input type="checkbox"/> No, only non-native mosquitofish		
Algae cover ≥ 10%	<input type="checkbox"/> Yes <input checked="" type="checkbox"/> No		

Supplemental information E.g., aquatic or semi-aquatic amphibians, snakes, or turtles; iron-oxidizing bacteria and fungi; etc.

Ephemeral drainage 35 was chosen as the representative drainage to complete this form for all 58 mapped ephemeral drainages across the Project site, as it is located roughly in the middle of the Project site, has tributary features, is well-cut, and has mostly the same hydrologic indicators as the rest of the drainages.

Photo log

Indicate if any other photos taken during the assessment

Photo ID	Description
	See Attachment B of the accompany Jurisdictional Delineation Report.
	A complete photo log of all 58 mapped features is contained in Attachment B.

Additional notes about the assessment:

All 58 mapped features share the same Absent/None categories shown on columns 1 through 5 on the following page. Therefore, all 58 features are classified as ephemeral.

Classification: Ephemeral

1. Hydrophytic plant species	2. Aquatic invertebrates	3. EPT taxa	4. Algae	5. Single indicators • fish present • algae cover $\geq 10\%$	Classification
None	None	Absent	Absent	Absent	Ephemeral
			Present	Present	At least intermittent
			Present	Absent	Need more information
	Few (1-19)	Absent	Present	Present	At least intermittent
			Absent	Absent	Need more information
			Present	Present	At least intermittent
		Present	Absent	Absent	Need more information
			Present	Present	At least intermittent
			Present	Present	At least intermittent
	Many (20+)	Absent	Absent	Absent	Need more information
			Present	Present	At least intermittent
			Present	Absent	Need more information
		Present	Absent	Absent	Need more information
			Present	Present	At least intermittent
			Present	Present	At least intermittent
Few (1-2)	None	Absent	Absent	Absent	Need more information
			Present	Present	At least intermittent
			Present	Present	At least intermittent
	Few (1-19)	Absent	Absent		Intermittent
			Present		At least intermittent
		Present			At least intermittent
					At least intermittent
	Many (20+)	Absent	Absent		Intermittent
			Present		At least intermittent
		Present	Absent		At least intermittent
			Present		Intermittent
Many (3+)	None	Absent	Absent	Absent	Need more information
			Present	Present	At least intermittent
			Present		At least intermittent
	Few (1-19)	Absent			At least intermittent
		Present			Perennial
	Many (20+)	Absent			At least intermittent
		Present			Perennial
		Present			Perennial
		Present			Perennial
		Present			Perennial

Shading provided to enhance readability by increasing the contrast between neighboring cells; empty cells indicate the classification will not change with additional information however it is recommended that all five indicators be measured and recorded during every assessment.