

**DOCKETED**

<b>Docket Number:</b>	21-IEPR-06
<b>Project Title:</b>	Building Decarbonization and Energy Efficiency
<b>TN #:</b>	239138
<b>Document Title:</b>	Presentation - Southern California Edison Industrial Strategic Energy Management (SEM) Program
<b>Description:</b>	S1.2C Derek Okada, Southern California Edison
<b>Filer:</b>	Raquel Kravitz
<b>Organization:</b>	SCE
<b>Submitter Role:</b>	Public
<b>Submission Date:</b>	8/2/2021 11:16:41 AM
<b>Docketed Date:</b>	8/2/2021



# Southern California Edison Industrial Strategic Energy Management (SEM) Program

---

DEREK OKADA

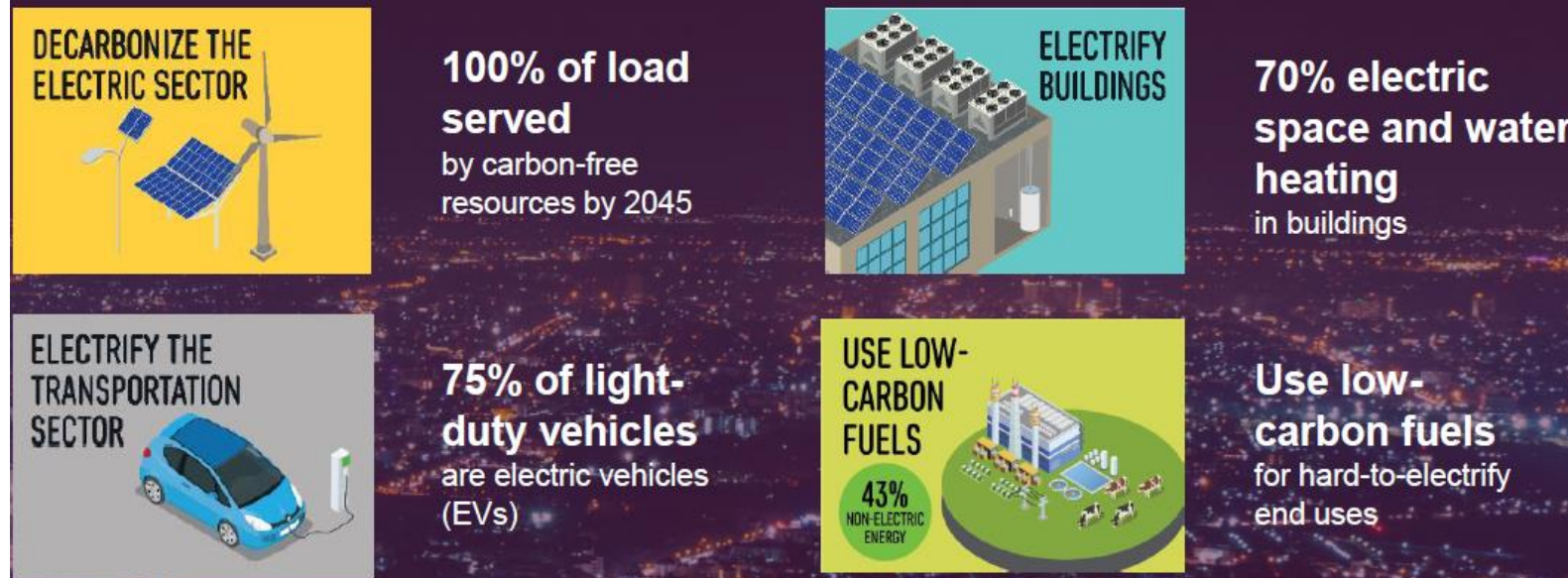
AUGUST 3, 2021

# Background and Strategy

SCE is one of the nation's largest electric utilities:

- Provides electric service to approximately 15 million people through 5 million customer accounts.
- SCE delivered more than 87 billion kWh of electricity in 2015 and powered a total of 50,000 square miles of service area

## Pathway 2045 Strategy



[Link to Pathway 2045](#)

# Energy Efficiency Program Landscape

Energy Efficiency portfolio is shifting from programs designed & delivered by SCE to Third Parties

- Requirement of 60% designed and delivered by Third Parties by 2023

## Industrial Strategic Energy Management (SEM)

- CPUC Decision 16-08-019 (dated August 18, 2016) directed the utilities to modify their continuous energy improvement (CEI) programs
- SEM was implemented by IOUs in 2017 to offer a robust strategic energy management program, using a statewide program design.
- SEM represents one of few remaining cost-effective resource programs within the IOUs' overall portfolios.

# Strategic Energy Management (SEM) Background

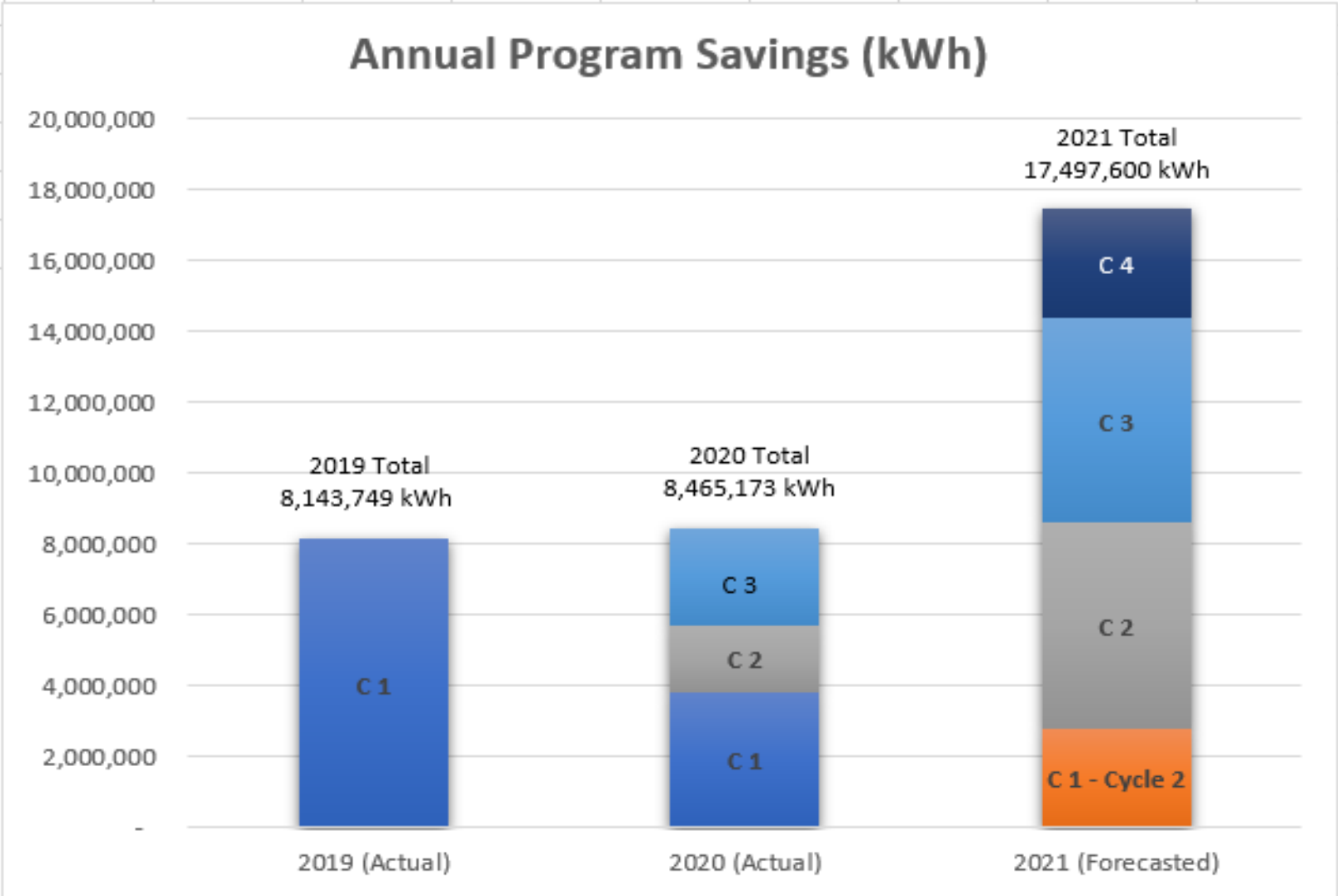
## Multi-year Program Cycles



## Industrial Customer Types:

- Aerospace
- Beverages
- Cardboard Packaging
- Construction Materials
- Food processing
- Industrial Gases
- Metal Smelting
- Plastic Formulation
- Plastic Packaging
- Water Bottling

# Program Impacts





# SEM Customers

## Testimonials From Energized Edison article

“Facilities really hit their stride in the program when they fully engage all employees. That creates a sustainable system of continuous improvement and operational savings because employees start to own the results.”

Richard Hart, Cascade Energy



### Sierra Aluminum Riverside and Fontana Facilities:

Uncovered energy and cost-saving opportunities by:

- Fixing air leaks and lowering their compressed air system’s operating pressure
- Installing auto shutoffs to shut off a superfluous air compressor
- Realized a 5% reduction in energy usage in 2020 in its Riverside facility and saved more than \$70,000 in energy savings, and
- Received a \$10,000 incentive check after achieving key program milestones.



### Glanbia Corona Facility:

Saved thousands of dollars after a treasure hunt at their Corona facility

- Identified and fixed 30-40 air leaks by using equipment from SCE’s “lending library.”
- Saved \$10,000 in savings

# SEM's Approach to Decarbonization

Decarbonization begins with a dedicated commitment to employing sustainable practices to achieve carbon-neutral electricity.

SEM helps industrial customers to:

- Achieve increased productivity, operational efficiency, and profitability
- Reduce energy consumption especially for energy-intensive businesses
- Build strong partnerships between customers and energy efficiency service providers
- Provide training, technical support and energy monitoring/reporting tools
- Encourage adoption of IDSM principles



# Thank You!

- For more information, please contact [Derek.Okada@sce.com](mailto:Derek.Okada@sce.com)