

DOCKETED	
Docket Number:	21-IEPR-06
Project Title:	Building Decarbonization and Energy Efficiency
TN #:	238359
Document Title:	Presentation - Connected Home
Description:	Presented by Jeff Morris, Senior Director State Government Relations Schneider Electric North America
Filer:	Raquel Kravitz
Organization:	Schneider Electric
Submitter Role:	Public
Submission Date:	6/21/2021 2:58:29 PM
Docketed Date:	6/21/2021



Connected Home

Square D – Schneider Electric

Presented by Jeff Morris, Senior Director State Government Relations
Schneider Electric North America



Why rethink things?

~39%

of the world's CO2
emission comes from
buildings

Sustainability
Challenges



Source: World Green Building Council, 2017

>30%

of the energy is wasted
in buildings

Efficiency
Challenges



Source: U.S. Environmental Protection Agency

87%

of our time is spent
indoors

People
Challenges



Source: Lawrence Berkeley National Laboratory

0%

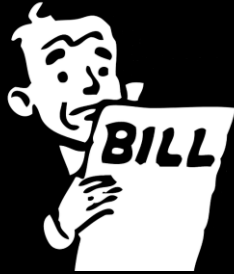
chance we'll return to
business as usual

Resiliency
Challenges



Help people adopt sustainable solutions

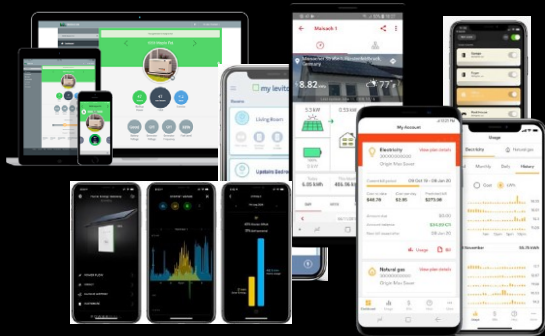
Price



Aesthetics & Complexity



Scattered Technology



Evolving Needs





SQUARE D

Energy Center

Maximize your facility and control its costs

Coming Spring 2004

Life Is On

Schneider
Electric

Connected Home by Square D – Grid to Plug Solution

Available Starting in July

Energy Center
& Wiser Energy

Wiring Devices



Homes of the future: more electric, more digital

Wi²Fi²er™

Resilient
Hyper-Efficient
Personal
Sustainable

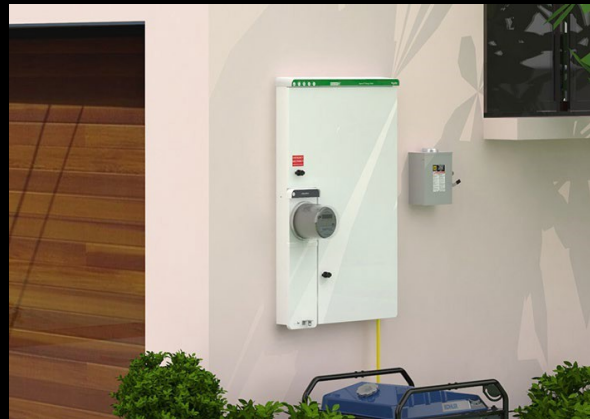
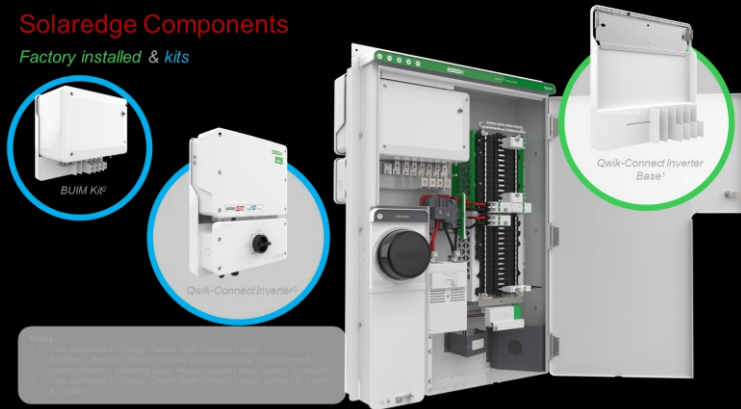


Life Is On

Schneider
Electric

Simplify installations

- Cut installation **Time** and **Materials**
- **Beautiful** Garage
- **Future Ready** – **Energy Storage & Control**



First construction under way.. **Key Takeaways**

Available starting July

- **Reduce Cost**
- **Simplified installation**
- **Enhanced user experience**
- **Future-proof**



Policy Considerations for Removing Barriers to Transformation

- ✓ Climb out of technology silos.
 - ✓ Create a technology neutral and transparent outcome-based retail market outside of CPUC for all customers DERS to interact with utility in the top 200 hours of peak demand or hosting.
 - ✓ Outcomes within 200 hours should be 1) Providing capacity 2) Taking capacity & 3) Ancillary services
- ✓ Be agnostic on relationship structures behind meters.
 - ✓ Focus needs to be on distribution utilities rate-basing two-way communication capabilities (digitizing analogue circuits below substations) to allow utilities to leverage DERs to keep rates low.
- ✓ Modernize outdated energy efficiency rebate programs for equipment/appliances that can communicate as system with any automated load platforms. Energy Star is last century's solution.
- ✓ Washington, Oregon and hopefully California moving to CTA-2045 communications port for large demand creating (240v) appliances/equipment. Water tanks now but EV charging, HVAC, heat pumps, large discretionary electric motors, freezers/refrigeration.

Life Is On



Schneider
Electric