



---

# ITEM 4

## Climate Adaptation Community Engagement Plan

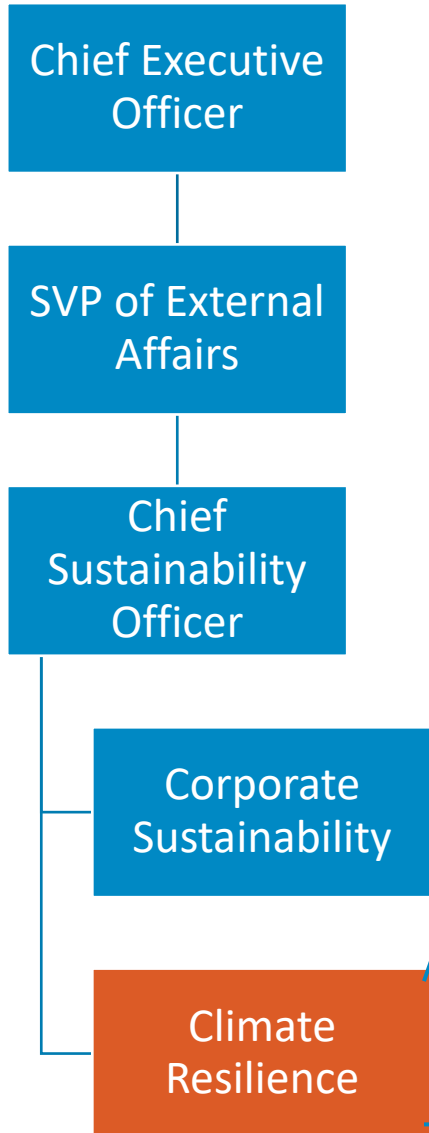
Matt Chiodo  
Heather Rock  
Nathan Bengsston

- Who works on PG&E's CEP?
- What has been done to-date?
- What happens next?

PG&E's Climate Vulnerability Assessment  
Community Engagement Proposal (CEP)

March 19, 2021





**Heather Rock**  
Director, Climate Resilience  
RACI: “Accountable” for CVA/CEP



**Nathan Bengtsson**  
Principal, Climate Resilience  
RACI: “Responsible” for CEP



**Hiring**  
Senior Rep, Climate Resilience  
RACI: “Responsible” for CEP tasks



# What has been done to date?

# CEP Goals Overview



Track A: Technical Analysis (Climate Vulnerability Assessment)

Track B: Vulnerable Community Perspective (Community Engagement Proposal)





## Proposed Process Goal Summary:

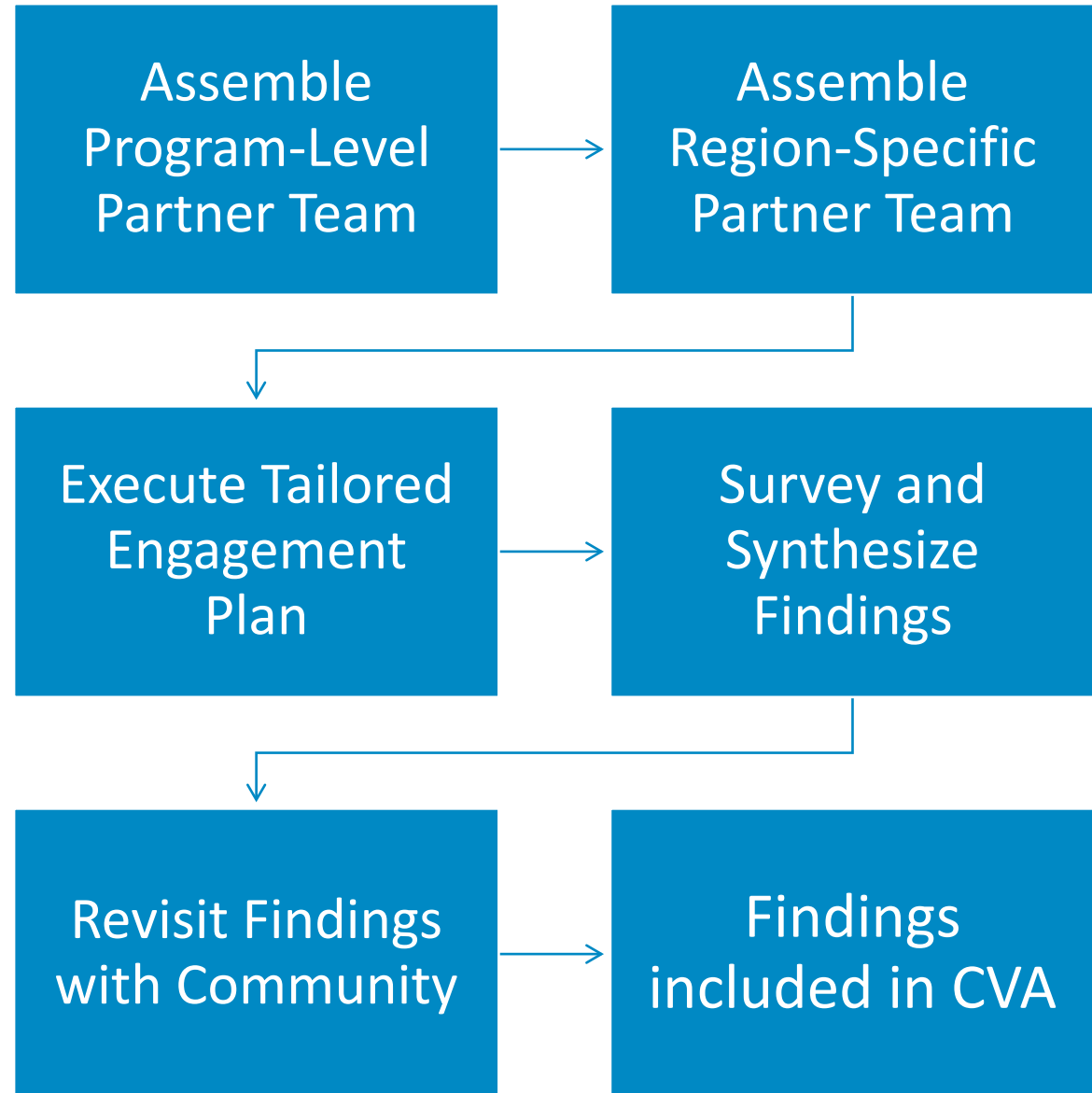
- **Practice** inclusive, equity-informed engagement
- **Build trust** with those we serve

## Proposed Outcome Goal Summary:

PG&E's CVA is informed by authentic, meaningful engagement regarding:

- **Resilience *of* the PG&E energy system**
- **Lived experience and resilience of communities to climate hazards**
- **Potential for resilience *of* the energy system to contribute to community resilience *through* the energy system**

Bay Area	Inland South	Inland North	North Coast	South Coast
<ul style="list-style-type: none"> <li>• North Bay</li> <li>• San Francisco</li> <li>• East Bay</li> <li>• Diablo</li> <li>• Mission</li> <li>• Peninsula</li> </ul>	<ul style="list-style-type: none"> <li>• Sacramento Delta</li> <li>• Stockton</li> <li>• Yosemite</li> <li>• Fresno</li> <li>• Kern</li> </ul>	<ul style="list-style-type: none"> <li>• North Valley</li> <li>• Sierra</li> </ul>	<ul style="list-style-type: none"> <li>• Humboldt</li> <li>• Sonoma</li> </ul>	<ul style="list-style-type: none"> <li>• De Anza</li> <li>• San Jose</li> <li>• Central Coast</li> <li>• Los Padres</li> </ul>





- PG&E's process requires qualified, equity-informed facilitation support
- PG&E looks forward to collaborating with ESJ stakeholders on criteria to help procure an excellent facilitation partner

## Potential Criteria

Legal and fiduciary considerations

Demonstrated expertise regarding effective outreach to historically marginalized communities.

Demonstrated success collaborating with CBOs on community outreach

Scalability of services

Demonstrated familiarity with local or regional adaptation initiatives

Value/Affordability

Equity and Inclusion

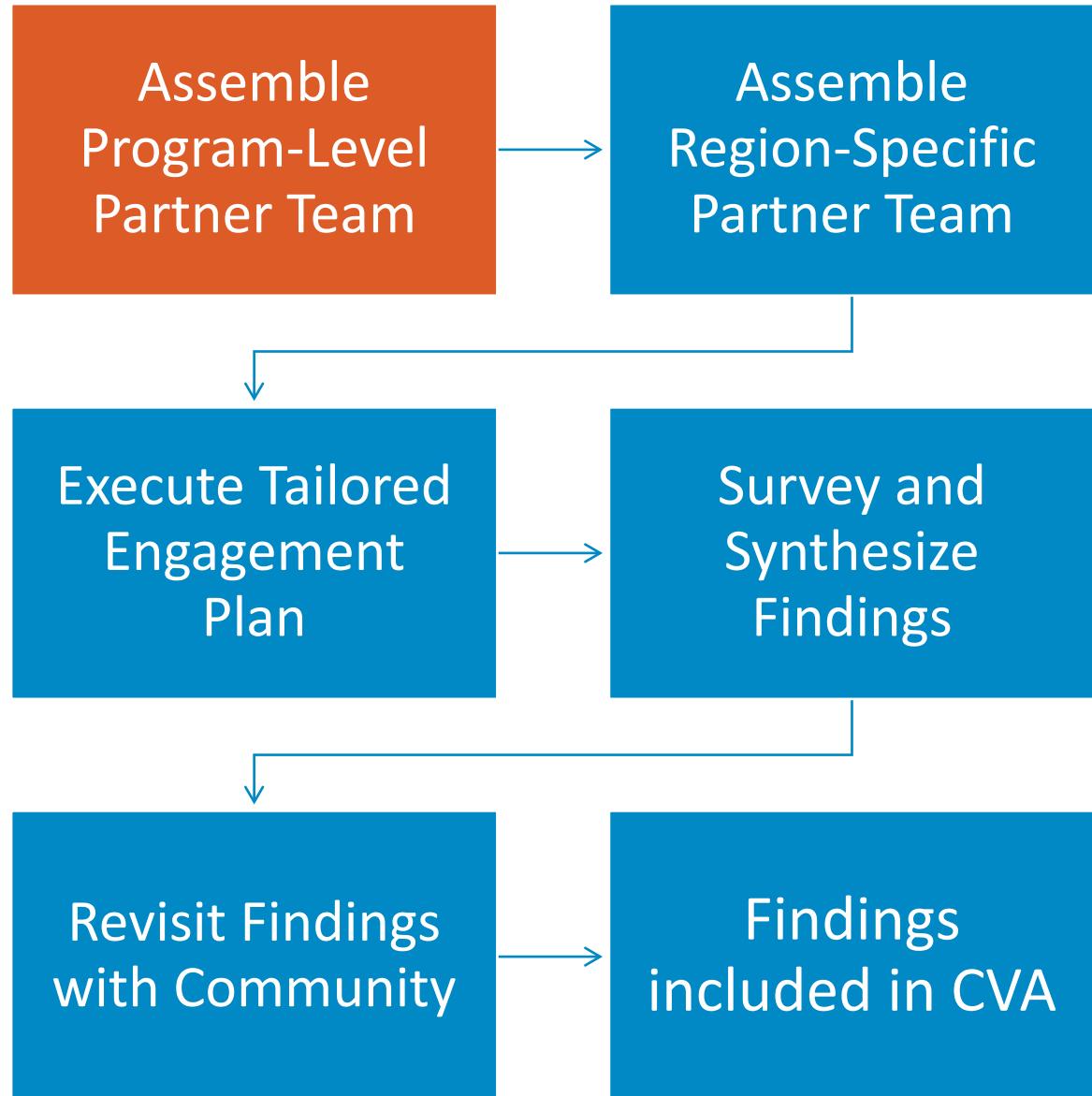
Geographic Location

Demonstrated success synthesizing community input into high-quality synthesis products that elevate the perspectives of participants

Other?

# What happens next?

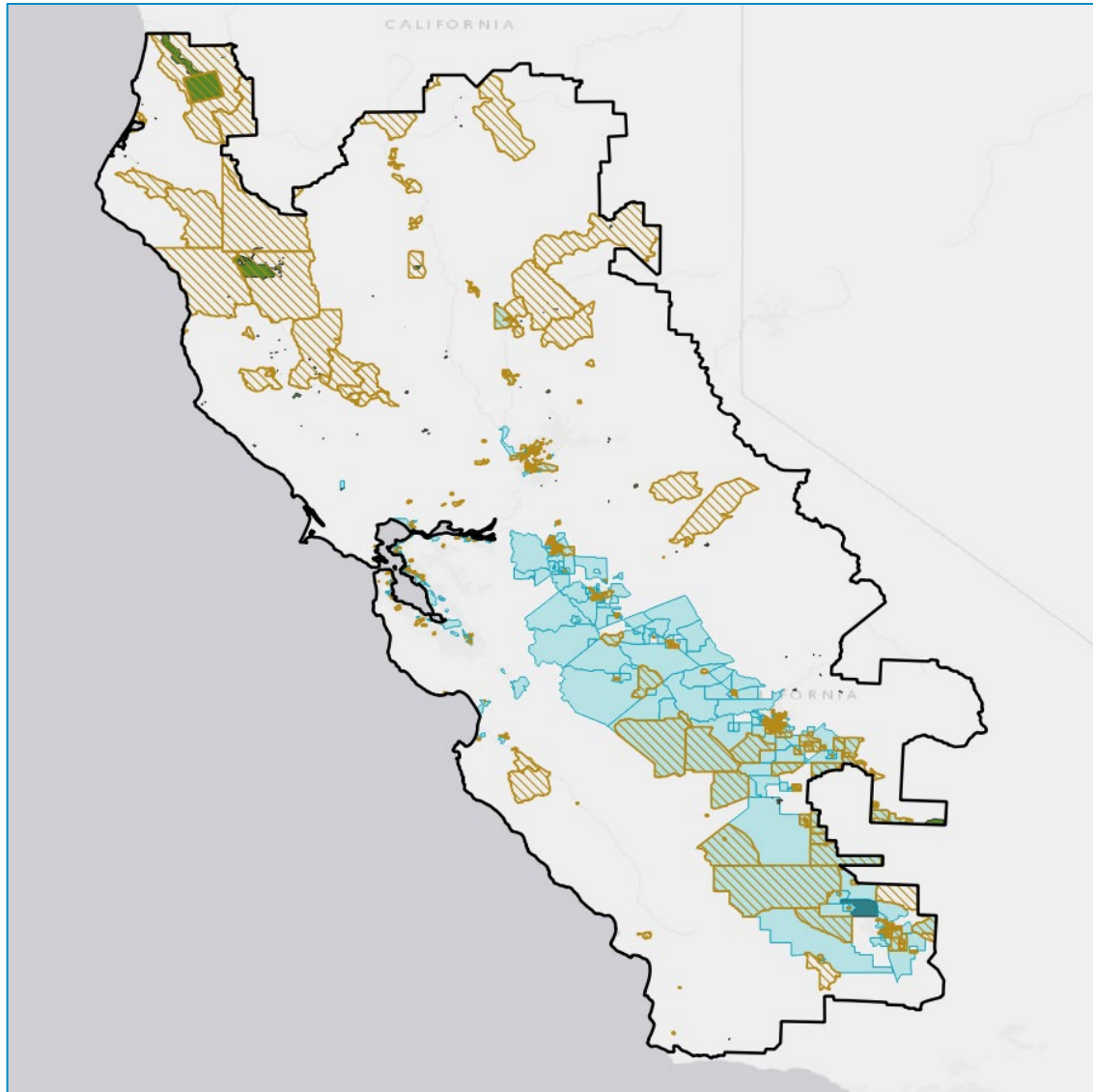
Bay Area	Inland South	Inland North	North Coast	South Coast
<ul style="list-style-type: none"> <li>• North Bay</li> <li>• San Francisco</li> <li>• East Bay</li> <li>• Diablo</li> <li>• Mission</li> <li>• Peninsula</li> </ul>	<ul style="list-style-type: none"> <li>• Sacramento Delta</li> <li>• Stockton</li> <li>• Yosemite</li> <li>• Fresno</li> <li>• Kern</li> </ul>	<ul style="list-style-type: none"> <li>• North Valley</li> <li>• Sierra</li> </ul>	<ul style="list-style-type: none"> <li>• Humboldt</li> <li>• Sonoma</li> </ul>	<ul style="list-style-type: none"> <li>• De Anza</li> <li>• San Jose</li> <li>• Central Coast</li> <li>• Los Padres</li> </ul>





# Appendix





PG&E Customer Accounts within DVC-designated Census Tracts

~ 25%

