

DOCKETED

Docket Number:	16-OIR-06
Project Title:	Senate Bill 350 Disadvantaged Community Advisory Group
TN #:	233907
Document Title:	Pacific Gas & Electric Community Microgrid Enablement Program Presentation
Description:	N/A
Filer:	Dorothy Murimi
Organization:	California Energy Commission
Submitter Role:	Public Advisor
Submission Date:	7/16/2020 12:45:53 PM
Docketed Date:	7/16/2020

Community Microgrid Enablement Program

*Disadvantaged Communities Advisory Group
Meeting*

July 17, 2020





30 Minutes to Hear from You!

Meeting Objectives:

1. Provide DACAG with an overview of the CMEP initial design concept.
2. Gather DACAG thoughts and suggestions to help guide final program design.

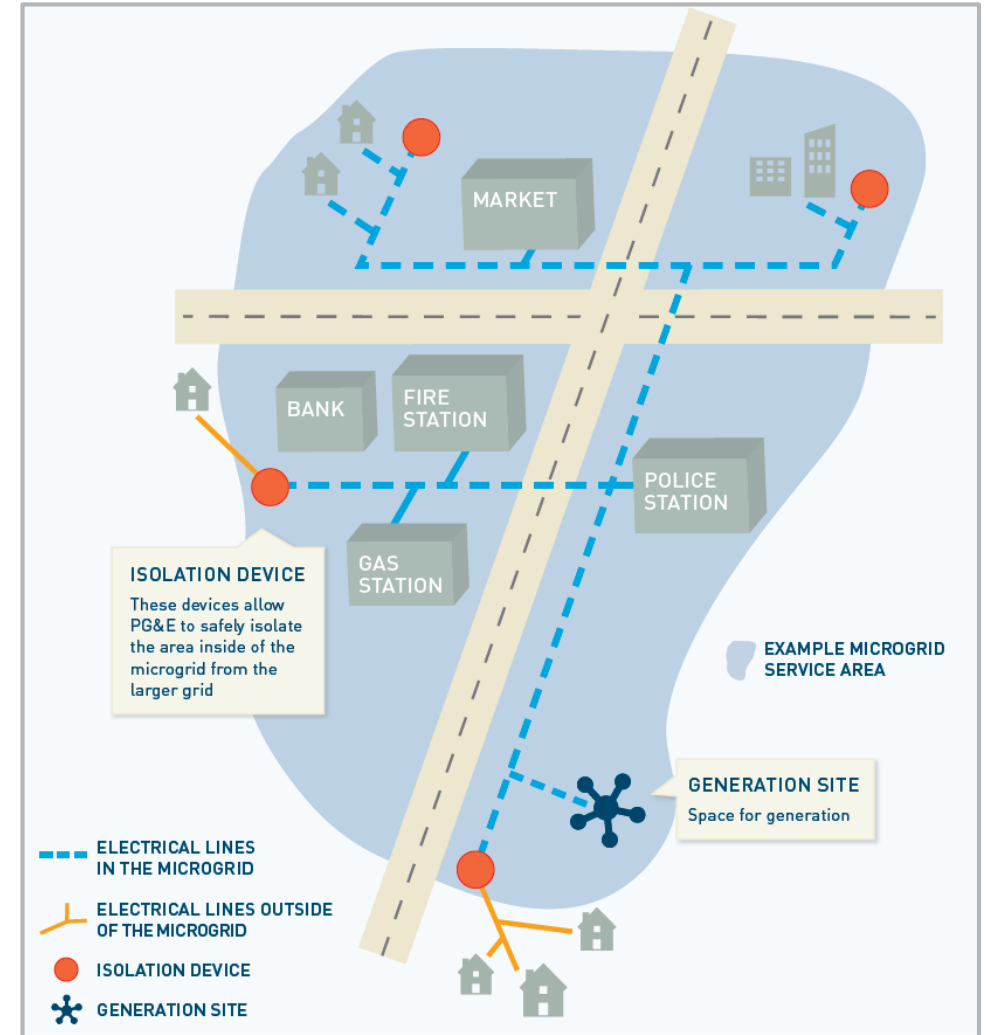
What is a Community Microgrid?

A **community microgrid** consists of a group of interconnected customers and distributed energy resources that can disconnect from and reconnect to the grid.

These microgrids would be designed to serve the portions of communities that include **community resources**, such as:

- Hospitals
- Police and fire stations
- Gas stations and markets

Each community microgrid is unique, and is designed by the community to address **their specific goals and needs** for the project. A range of variables will dictate the size of the microgrid, what community services are served and what elements are included in the design.



The diagram above represents an approximate layout of a community microgrid. The layout and dimensions are approximate and for illustrative purposes only.



The Community Microgrid Enablement Program

CMEP Objective: PG&E is seeking to deepen its partnership with communities seeking resilience by (1) actively supporting the identification and design of resilience projects and (2) removing barriers to microgrid deployment.

CMEP Status: PG&E's CMEP framework was approved by the CPUC on 6/11. We are now in the detailed program design phase, and will be filing a program design advice letter on 8/17.

CMEP Components and Implementation Timeframes:

- **Dedicated team and enhanced processes** to support community resilience planning, design and implementation (2020)
- **Enhanced tools** and information to support microgrid development (2020 -2021)
- **Cost Offsets** – Up to \$27M per year for distribution grid upgrades to enable community-driven multi-customer microgrids (2021)
- **Tariffs and Operational Agreements** to enable use of PG&E's grid for community-driven multi-customer microgrids (2021)



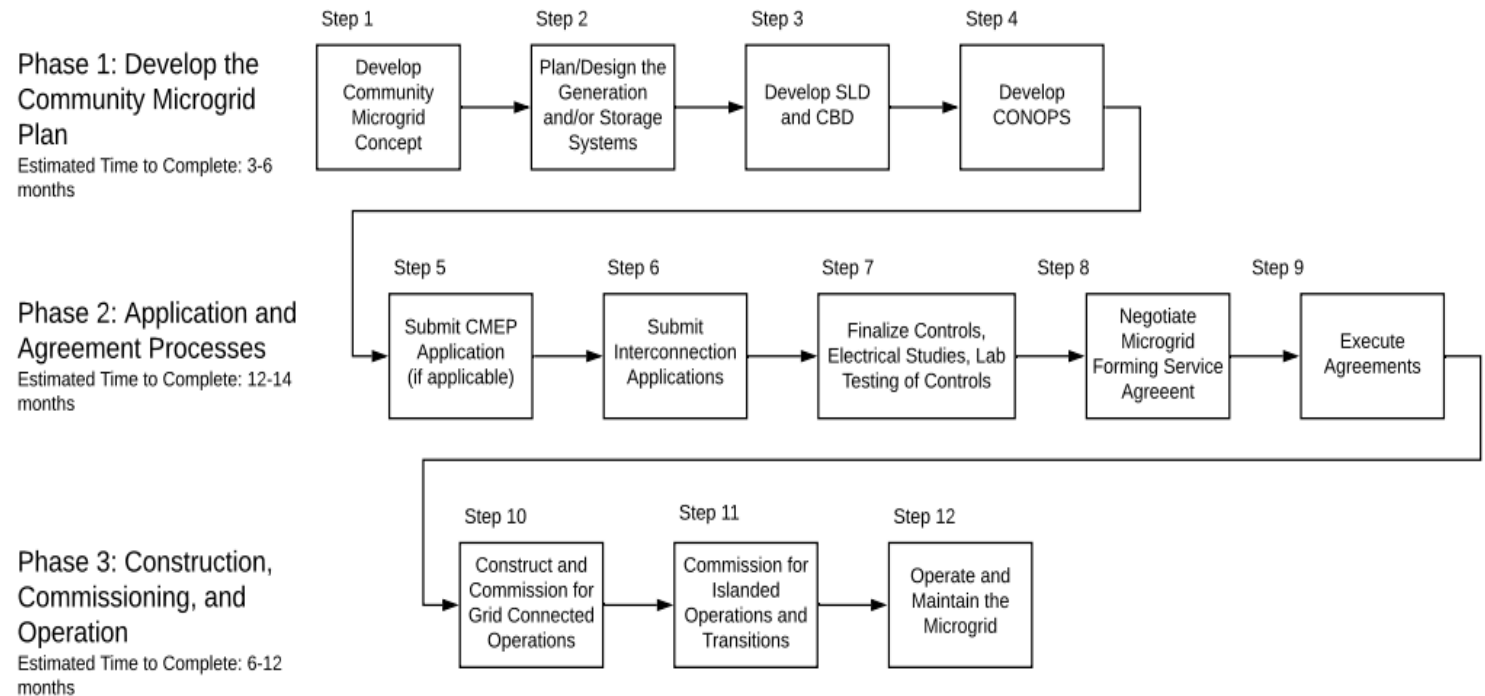
Enhanced Utility Technical Support

Through CMEP, PG&E will provide enhanced utility technical support for critical facility microgrid projects.

This may include:

- **Project Scoping** – Helping local and tribal governments understand resilience options.
- **Project Development** - Identifying key project design considerations
- **Project Management** - Providing end-to-end project management support

Navigating the Community Microgrid Process



Abbreviations:

SLD- Single Line Diagram
CBD- Communication Block Diagram
CONOPS- Concept of Operations Document
CMEP- Community Microgrid Enablement Program



Prioritizing Vulnerable Communities

PG&E wishes to prioritize low-income, disadvantaged, access and functional needs, and other vulnerable communities.

Discussion



Defining Disadvantaged and Vulnerable Communities

	DACAG EQUITY FRAMEWORK	CEJA PROPOSAL	CLIMATE ADAPTATION OIR PD (R.18-04-019)
CalEnviroScreen Criteria	<ul style="list-style-type: none">• 25% highest scoring census tracts in CalEnviroScreen	<ul style="list-style-type: none">• 25% highest scoring census tracts in CalEnviroScreen• 5% most polluted census tracts in CalEnviroScreen	<ul style="list-style-type: none">• 25% highest scoring census tracts in CalEnviroScreen• 5% most polluted census tracts in CalEnviroScreen
Income Criteria	<ul style="list-style-type: none">• Census tracts with AMI/state median income <80%• HH with median income <80% of AMI	<ul style="list-style-type: none">• Census tracts with median HH income <60% statewide median income	<ul style="list-style-type: none">• Census tracts with median HH income <60% statewide median income
Tribal Lands	All tribal lands	All tribal lands	All tribal lands



Discussion

- What are your thoughts on the **prioritization strategies** for disadvantaged, low income and AFN communities in the CMEP program?
- In what other ways can we **prioritize these communities** throughout the process?
- We are gathering a **database of complementary programs and subsidies** to provide resilience support to these communities. If you know of any of which we should be aware, please let us know!
- Finally, if you are you aware of any vulnerable communities with existing generation/storage assets that would be a **good fit for our CMEP program**, please let us know.

Thank You

Molly Hoyt
Principal Program Manager
Molly.hoyt@pge.com

Eunice Garcia
Community Strategies Manager
Eunice.garcia@pge.com

