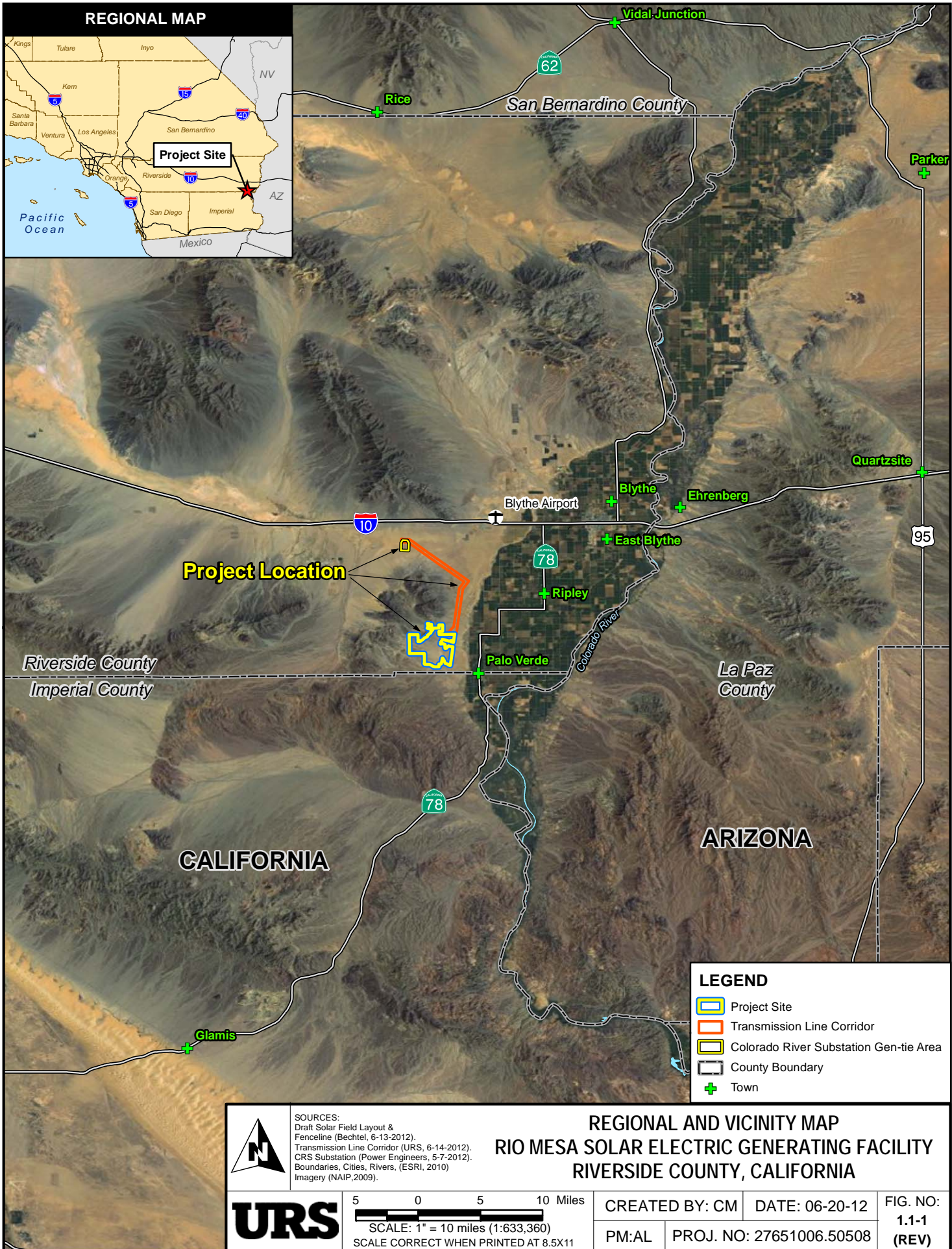


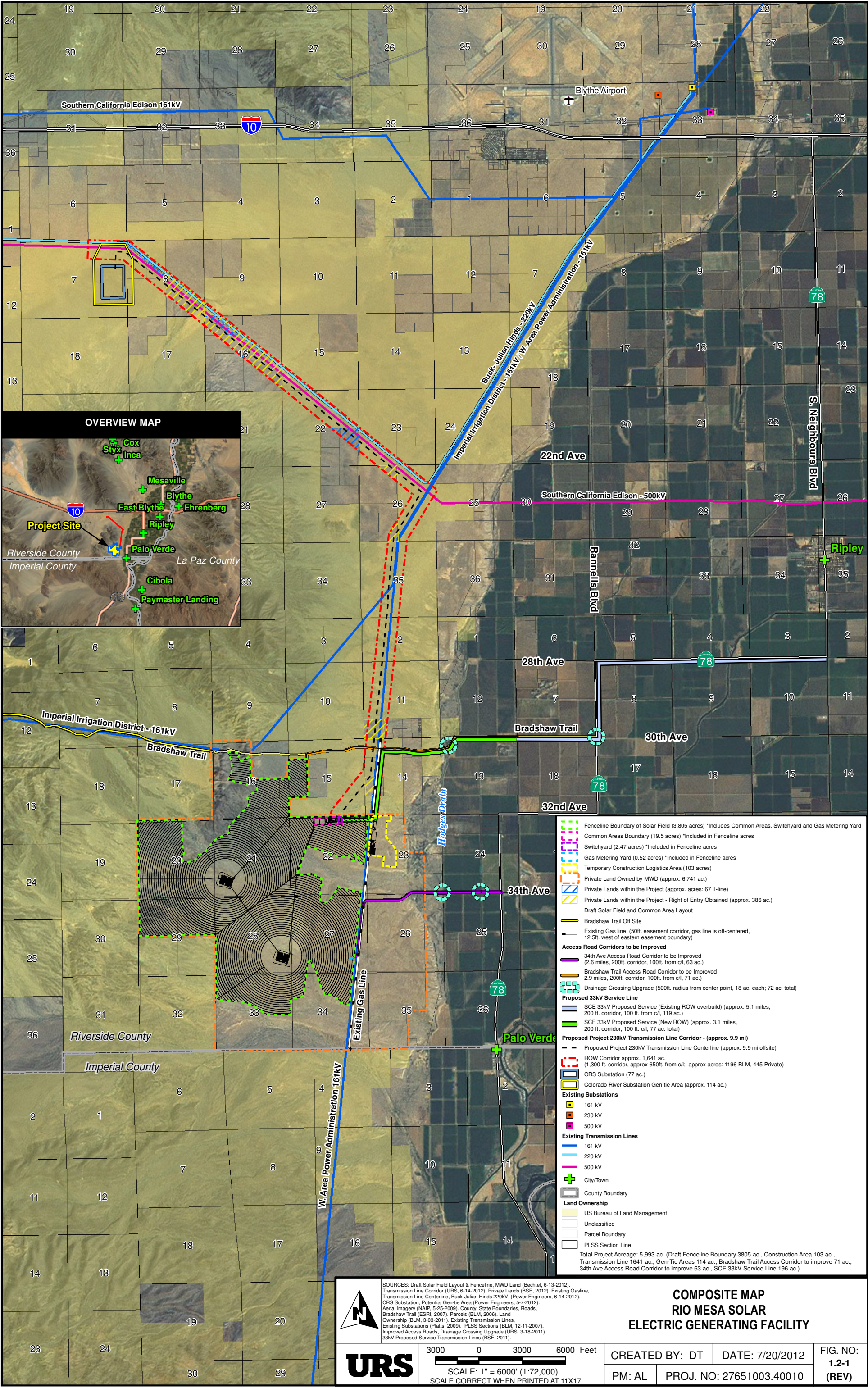
**DOCKETED**

<b>Docket Number:</b>	11-AFC-04
<b>Project Title:</b>	Rio Mesa Solar Electric
<b>TN #:</b>	233521
<b>Document Title:</b>	Part 2 Applicant's Supplemental Response to Data Request 16 and 26 Additional Information Regarding the Executive Summary
<b>Description:</b>	Figures, Part 2.
<b>Filer:</b>	Marichka Haws
<b>Organization:</b>	California Energy Commission
<b>Submitter Role:</b>	Commission Staff
<b>Submission Date:</b>	6/17/2020 4:17:11 PM
<b>Docketed Date:</b>	6/17/2020

Path: G:\gis\projects\1577\27651002\map\_docs\mxd\AFC\_Executive\Supplemental\Site\_Location\_Map.mxd, colin\_mattison, 6/21/2012







OVERVIEW MAP



- Fenceline Boundary of Solar Field (3,805 acres) \*Includes Common Areas, Switchyard and Gas Metering Yard
  - Common Areas Boundary (19.5 acres) \*Included in Fenceline acres
  - Switchyard (2.47 acres) \*Included in Fenceline acres
  - Gas Metering Yard (0.52 acres) \*Included in Fenceline acres
  - Temporary Construction Logistics Area (103 acres)
  - Private Land Owned by MWD (approx. 6,741 ac.)
  - Private Lands within the Project (approx. acres: 67 T-line)
  - Private Lands within the Project - Right of Entry Obtained (approx. 386 ac.)
  - Draft Solar Field and Common Area Layout
  - Bradshaw Trail Off Site
  - Existing Gas Line (50ft. easement corridor, gas line is off-centered, 12.5ft. west of eastern easement boundary)
  - Access Road Corridors to be Improved**
    - 34th Ave Access Road Corridor to be Improved (2.6 miles, 200ft. corridor, 100ft. from c/l, 63 ac.)
    - Bradshaw Trail Access Road Corridor to be Improved (2.9 miles, 200ft. corridor, 100ft. from c/l, 71 ac.)
  - Drainage Crossing Upgrade (500ft. radius from center point, 18 ac. each; 72 ac. total)
  - Proposed 33kV Service Line**
    - SCE 33kV Proposed Service (Existing ROW overbuild) (approx. 5.1 miles, 200 ft. corridor, 100 ft. from c/l, 119 ac.)
    - SCE 33kV Proposed Service (New ROW) (approx. 3.1 miles, 200 ft. corridor, 100 ft. c/l, 77 ac. total)
  - Proposed Project 230kV Transmission Line Corridor - (approx. 9.9 mi)**
    - Proposed Project 230kV Transmission Line Centerline (approx. 9.9 mi offsite)
    - ROW Corridor approx. 1,641 ac. (1,300 ft. corridor, approx 650ft. from c/l; approx acres: 1196 BLM, 445 Private)
    - CRS Substation (77 ac.)
    - Colorado River Substation Gen-tie Area (approx. 114 ac.)
  - Existing Substations**
    - 161 kV
    - 230 kV
    - 500 kV
  - Existing Transmission Lines**
    - 161 kV
    - 220 kV
    - 500 kV
  - City/Town
  - County Boundary
  - Land Ownership**
    - US Bureau of Land Management
    - Unclassified
    - Parcel Boundary
    - PLSS Section Line
- Total Project Acreage: 5,993 ac. (Draft Fenceline Boundary 3805 ac., Construction Area 103 ac., Transmission Line 1641 ac., Gen-Tie Areas 114 ac., Bradshaw Trail Access Corridor to improve 71 ac., 34th Ave Access Road Corridor to improve 63 ac., SCE 33kV Service Line 196 ac.)

SOURCES: Draft Solar Field Layout & Fenceline, MWD Land (Bechtel, 6-13-2012); Transmission Line Corridor (URS, 6-14-2012); Private Lands (BSE, 2012); Existing Gasline, Transmission Line Centerline, Buck-Julian Hinds 220kV (Power Engineers, 6-14-2012); CRS Substation, Potential Gen-tie Area (Power Engineers, 5-7-2012); Aerial Imagery (NAIP, 5-25-2009); County, State Boundaries, Roads, Bradshaw Trail (ESRI, 2007); Parcels (BLM, 2006); Land Ownership (BLM, 3-03-2011); Existing Transmission Lines, Existing Substations (Platts, 2009); PLSS Sections (BLM, 12-11-2007); Improved Access Roads, Drainage Crossing Upgrade (URS, 3-18-2011); 33kV Proposed Service Transmission Lines (BSE, 2011).



URS

3000 0 3000 6000 Feet  
SCALE: 1" = 6000' (1:72,000)  
SCALE CORRECT WHEN PRINTED AT 11X17

COMPOSITE MAP  
RIO MESA SOLAR  
ELECTRIC GENERATING FACILITY

CREATED BY: DT	DATE: 7/20/2012	FIG. NO: 1.2-1 (REV)
PM: AL	PROJ. NO: 27651003.40010	





POST CONSTRUCTION ARTIST'S RENDERING  
RIO MESA SOLAR ELECTRIC GENERATING FACILITY  
RIVERSIDE COUNTY, CALIFORNIA

SOURCES: URS 2012

NOT TO SCALE

CREATED BY: DS

DATE: 6/28/2012

FIG. NO:

PM:AL

PROJ. NO: 27651006.10000

**1.3-2  
(REV)**