

DOCKETED	
Docket Number:	19-IEPR-07
Project Title:	Electricity Sector
TN #:	229977-7
Document Title:	Fisheries Research and Outreach
Description:	Presentation by Carrie Pomeroy, California Sea Grant
Filer:	Harrison Reynolds
Organization:	California Energy Commission
Submitter Role:	Commission Staff
Submission Date:	10/7/2019 12:21:30 PM
Docketed Date:	10/7/2019



Fisheries Research and Outreach

Considerations for Offshore Wind Energy Development

Carrie Pomeroy, PhD

California Sea Grant, UC San Diego
Institute of Marine Sciences, UC Santa Cruz

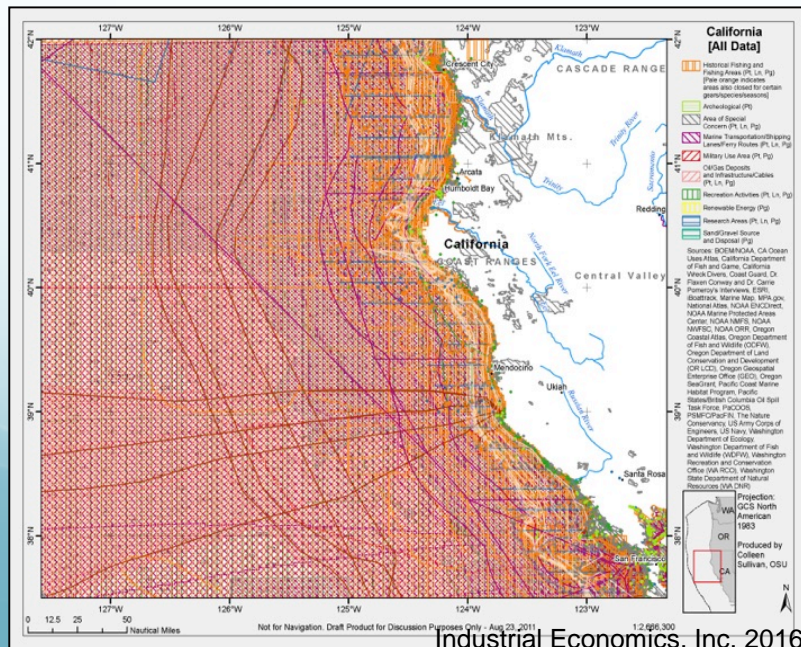
Status of Research, Data Collection, and Other Initiatives to Support
Environmental Analyses and Public Outreach in California

CEC Workshop on Offshore Wind
October 3, 2019
San Francisco, CA



The ocean is big ... and busy

- Multiple, complex and dynamic uses, at sea and on shore
- Shaped by environmental, social, economic and regulatory factors
- Potential synergies, compatibilities, conflicts



Diversity of space use practices, patterns and needs

Permanently fixed

Aquaculture
Ocean energy
Seafloor cables

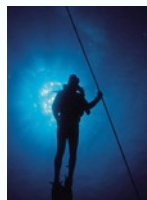


Stationary

Trap
Set longline
Set gillnet



Dive
Hook-&-line

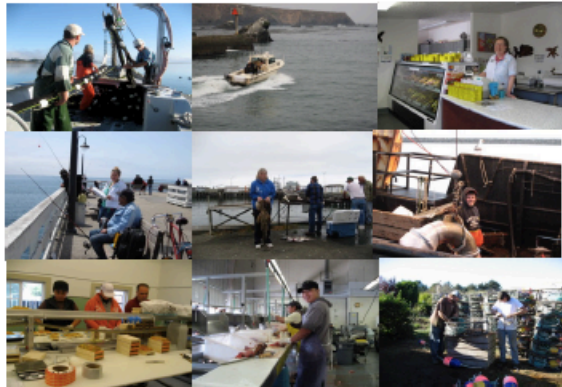


Purse seine Trawl Troll



Socioeconomic “Essential Fishery Information”

SOCIOECONOMIC GUIDANCE FOR IMPLEMENTING THE CALIFORNIA MARINE LIFE MANAGEMENT ACT



Carrie Pomeroy, PhD

California Sea Grant Extension Program, UC
San Diego
Institute of Marine Sciences, UC Santa Cruz

Nicole Georgilas

Institute of Marine Sciences, UC Santa Cruz



Debbie Aseltine-Neilson

California Department of Fish and Wildlife
Marine Region

Ryan Bartling

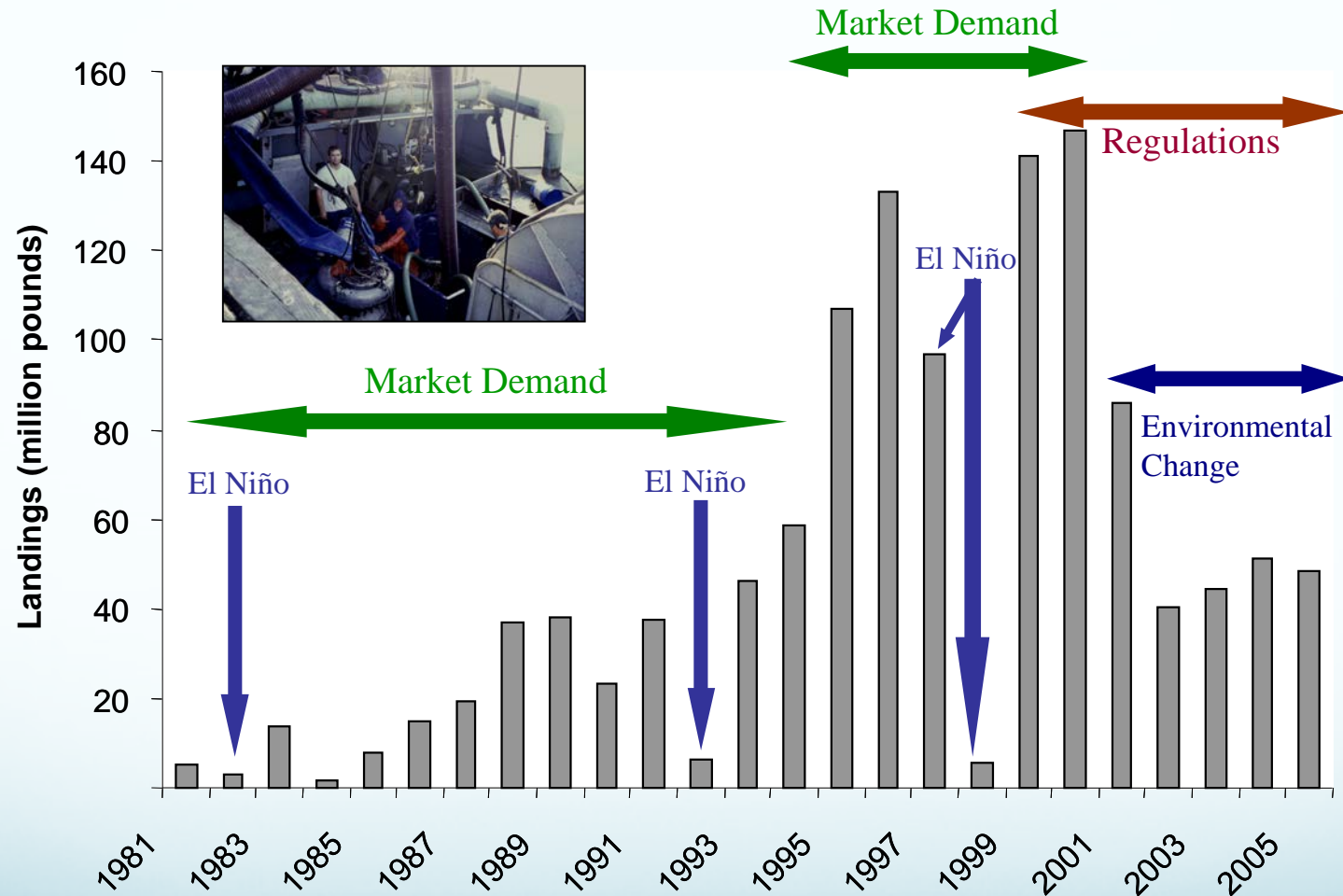
California Department of Fish and Wildlife
Marine Region



OCTOBER 2018

- Demographics
- Employment
- Expenditures
- Revenues
- Operations
- Practices
- Values, preferences, needs
- Attitudes, opinions, beliefs
- Institutions
- Relationships and networks
- Capital
- Environmental factors
- Macroeconomic factors

Squid Purse Seine Fishery, Santa Barbara Channel



Ground-Truthing is Critical

Summing up

Research

- Data v. information v. understanding
- Range and relevance of socioeconomic “essential fishery information”
- Integrate diverse sources
 - available data and other information
 - fishermen’s knowledge
 - ground-truthing is critical

Outreach

- Engaging with fishery participants to
 - build and interpret information
 - identify common interests and needs
 - facilitate coordination
 - minimize conflict

