

DOCKETED

Docket Number:	16-OIR-05
Project Title:	Power Source Disclosure - AB 1110 Implementation Rulemaking
TN #:	229720
Document Title:	Steve Uhler Comments 20 CCR 1394.1(a) Retail Disclosures to Consumers, Electricity portfolios OIR-15-05
Description:	N/A
Filer:	System
Organization:	Steve Uhler
Submitter Role:	Public
Submission Date:	9/12/2019 12:23:50 AM
Docketed Date:	9/12/2019

*Comment Received From: Steve Uhler
Submitted On: 9/12/2019
Docket Number: 16-OIR-05*

**20 CCR 1394.1(a) Retail Disclosures to Consumers, Electricity portfolios
OIR-15-05**

20 CCR 1394.1(a) Retail Disclosures to Consumers, Electricity portfolios OIR-15-05

Staff's express terms say, paraphrased,

20 CCR 1391 Definitions

When a retail supplier offers to sell to consumers in California under terms and conditions specific to an offer or to a tariff. An electricity portfolio is distinguishable from other electricity portfolios offered by the same retail supplier if it satisfies the following criteria: It has been given a discrete title or name by the retail supplier.

Under CCR 20 1394.1 (a) the retail supplier shall provide a power content label for each electricity portfolio.

Attached is a marketing disclosure of electricity portfolios with discrete titles or names.

Please provide current examples as required by current regulations 20 CCR 1393 (b) for all of the electric service products and examples after the adoption of the regulations 20 CCR 1394.1 (a) in the express terms for the electricity portfolios listed in the attached marketing disclosure.

Steve Uhler
sau@wwmpd.com

Additional submitted attachment is included below.

Billing options

- **Budget Billing.** If you have higher winter or summer bills, you can request that your bills be divided into equal monthly payments, which are reassessed every four months.
- **Electronic Funds Transfer Program.** You can apply to have your bill payment deducted automatically from your checking account each month.
- **Online Payments.** Pay your bill online at smud.org. Click on "My Account" and then "Pay Bill" to view your bill and make payments directly from your bank account or using your credit card.

Renewable energy options

- **Greenergy®.** For an additional \$3 or \$6 per month added to your bill, you can have 50% or 100% of your electric usage met with renewable resources like wind, water, solar and biomass.
- **SolarShares®.** Enjoy the benefits of solar power without having to buy or lease it. For a fixed monthly price based on your electricity usage, SolarShares will credit your monthly bill for solar power produced on a solar farm in our service area.
- **Community Solar®.** This program uses solar energy and solar installations to educate our community about the importance of renewable energy.
- **Net metering for renewable generation.** If you have qualifying renewable generation—such as a photovoltaic system—installed at your residence, this option is for you. The renewable generation supplies your household electricity needs, which in turn reduces the electricity supplied by SMUD. Intermittent excess energy produced by the renewable energy system is sent back to SMUD and is reflected as a credit on your bill.

Other options

- **EnergyHELP.** With as little as a \$1 donation added to your monthly bill, you can help qualified, low-income families in financial crisis maintain electric service in their homes.
- **HomePower®.** SMUD offers homeowners (up to four-plexes) an optional service to cover unforeseen minor electrical repairs, up to \$500 per year. A charge of \$5.95 per month will be added to your bill.
- **Voluntary Peak Corps.** In exchange for bill credit, some customers allow SMUD to temporarily cycle off their central air conditioners during electrical system emergencies to help prevent power outages (June through September). The program is not accepting new subscribers.
- **Electric Vehicle (EV).** If you own or lease an electric vehicle, you can receive a discount for charging between midnight and 6 a.m. on our Time-of-Day Rate. Learn more at smud.org/DriveElectric.
- **Master-Metered Rate.** This rate is for mobile home parks and eligible multi-family dwellings, which SMUD serves with a single master meter. Rate category: RSMM.
- **Three-Phase Power.** This service is available for an additional fee to residential customers with large electric loads, such as that of an elevator or commercial grade light industrial equipment.
- **Standby Service.** SMUD assesses an additional fee to provide backup/maintenance service for customers who operate their own generators. Solar, wind and biogas generators are exempt from this charge.

Clear space

You must leave 8 feet of clearance in front of SMUD's green electrical boxes. This helps us work more efficiently, especially during a power outage. You may be charged if SMUD has to clear the space.

Power theft

SMUD technicians encounter various methods of power theft each month. Unsafe conditions are a danger to all SMUD customers. Please report any unsafe situation you discover to SMUD.

Choose your service and give us a call!

Customer Service.....1-888-742-7683

- *Bill inquiries, new service, pay station locations, residential products and services*
- *Energy efficiency products and services, EnergyHELP, Financing, Greenergy®, Low-Income, Medical Equipment Discount*
- *Home Energy Use Analysis, HomePower®, SolarShares®, Shade Trees, Peak Corps*

Power Outages1-888-456-7683
24-hour service line

TDD Phone Service916-732-6630
For the hearing impaired

Energy and
Technology Center.....916-732-6738
Educational seminars and workshops on energy-related topics and SMUD programs

smud.org

®Registered service mark of Sacramento Municipal Utility District.

©SMUD 1809-17r



2018 Residential Rate Guide

Effective January 1, 2018

.....
Helping you save money, energy
and the environment.
.....



Powering forward.
Together.

501/18/RESBI
30158-I-0201

Your basic rates

As your community-owned and not-for-profit electric service provider, SMUD proudly offers a range of residential rate options that are priced among the lowest in California—averaging 32% lower than neighboring PG&E.

This brochure explains how we bill your electricity service, and summarizes the options available to you. The full text of SMUD's Rates, Rules and Regulations are available on our web site at smud.org/Rates or at our Customer Service Center at 6301 S Street in Sacramento.

Energy charges: the bulk of your bill

Most of the charges on your monthly bill will be for the electric energy you use, measured in kilowatt-hours (kWh).

Other charges

Your monthly bill will also include a few other charges. Among them:

- **System Infrastructure Fixed Charge** of \$20.30, which helps to defray the expenses associated with billing, meters and other equipment that serve your home.
- **Taxes** from the State & some local municipalities.
- **Premium fees** for any special programs or services you may have chosen to participate in.
- **Discounts** that you may be eligible for as a participant in our low-income, medical equipment or air conditioning load management programs.
- **Solar Surcharge** for all energy rates, which was implemented to comply with the Senate Bill 1 (SB1) State solar requirements. The surcharge will end when surcharge revenues reach \$130 million.
- **Hydro Generation Surcharge** that adjusts annually, as needed, based on precipitation.

Standard energy charges

SMUD offers seasonal electricity prices for all customers.

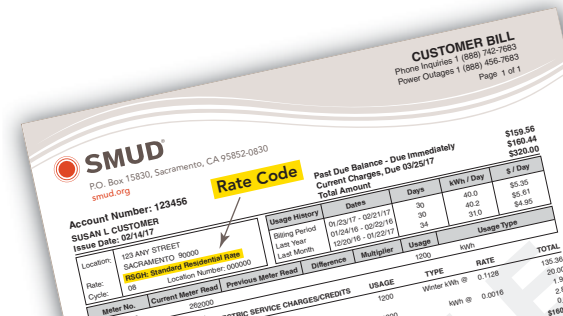
Residential electricity prices by season (Dollars/kWh)* (RSGH, RSEH, RWGH, RWEH, RSCH, RWCH)

Residential Rates Winter, Spring & Fall**	Residential Rates Summer**
\$0.1145/kWh	\$0.1310/kWh

* Does not include solar or hydro generation surcharges.

** Winter: Dec. 1 - March 31; Spring & Fall: April 1 - May 31 and Oct. 1 - Nov. 30; Summer: June 1 - Sept. 30.

SMUD offers you energy-saving programs to help you manage your energy bills. Learn more at smud.org.



What rate are you on?

SMUD uses a simple code to identify your basic rate, your energy allowance option and your participation in any Residential Assistance Programs. The illustration to the left shows where to find your Rate Category on your bill. The table below illustrates Rate Category codes for the basic rate types and options.

Examples of SMUD residential rate category codes

	Standard	Low-Income	Medical Equipment Discount	Domestic Water Well
Residential Rate Standard Rate With Heat Pump	RSGH	RSGH_E	RSGH_L	RWGH
Electric Space Heat (Closed)	RSEH	RSEH_E	RSEH_L	RWEH
	RSCH	RSCH_E	RSCH_L	RWCH

Time-Of-Day Rate (TOD)

Beginning January 2018, customers with rooftop solar systems or plug-in electric vehicles can enroll in the Time-of-Day (5-8 p.m.) Rate. This is the standard residential rate for customers approved for solar installation after Dec. 31, 2017, and any customers moving into a home with existing solar.

The Time-of-Day (4-7 p.m.) Rate closed to new enrollments on Dec. 31, 2017. Solar customers on this rate can remain on it until Dec. 31, 2022. Customers with electric vehicles who are on this rate will be transitioned to the Time-of-Day (5-8 p.m.) Rate in 2019.

In 2019, the Time-of-Day (5-8 p.m.) Rate will be the standard rate for all residential customers. If you can shift your electricity use to times other than the 5-8 p.m. Peak period, you could save on your electricity bill. Learn more at smud.org/TOD.

Residential assistance programs

SMUD offers low-income and medical equipment discount rates for qualifying households.

Energy Assistance Program Rate (EAPR). This discount is for low-income customers. Customers who qualify will receive a discount on all electricity usage in 2018. Maximum discount on energy use and System Infrastructure Fixed Charge is determined by household income.

Medical Equipment Discount (MED) Rate. Households with a full-time resident dependent on a qualifying electrically-powered medical device in the home may be eligible for a \$15-per-month MED Rate discount.

To apply for EAPR or MED, visit smud.org or call 1-888-742-7683 for an application.

