

DOCKETED

Docket Stamp Updated:	7/12/2019 1:50:11 PM
Docket Number:	19-SPPE-02
Project Title:	Walsh Data Center
TN #:	228950
Document Title:	Request for Agency Participation
Description:	N/A
Filer:	Patty Paul
Organization:	California Energy Commission
Submitter Role:	Commission Staff
Submission Date:	7/12/2019 1:32:26 PM
Docketed Date:	7/12/2019

DOCKETED

Docket Number:	19-SPPE-02
Project Title:	Walsh Data Center
TN #:	228950
Document Title:	Agency Distribution List
Description:	N/A
Filer:	Patty Paul
Organization:	California Energy Commission
Submitter Role:	Commission Staff
Submission Date:	7/12/2019 1:31:43 PM
Docketed Date:	7/12/2019

CALIFORNIA ENERGY COMMISSION

1516 NINTH STREET
SACRAMENTO, CA 95814-5512
www.energy.ca.gov

**TO: AGENCY DISTRIBUTION LIST****REQUEST FOR AGENCY PARTICIPATION IN THE REVIEW OF THE WALSH DATA CENTER (19-SPPE-02)**

On June 28, 2019, 651 Walsh Partners, LLC (applicant) filed an application with the California Energy Commission for a Small Power Plant Exemption (SPPE) for the Walsh Backup Generating Facility (WBGF), which would provide backup generation support to the Walsh Data Center (WDC) (19-SPPE-02). The WDC and associated WBGF would be located at 651 Walsh Avenue in Santa Clara, California.

PROJECT DESCRIPTION

The WDC would include demolition of the existing improvements on the site to construct a four-story data center building with an attached three-story administration building totaling 435,050 square feet, substation, generator equipment yard, surface parking and landscaping. The WBGF would consist of 32, 3-megawatt (MW) diesel fired generators with a total generation capacity of up to 80 MW¹ to provide an uninterruptible power supply for WDC tenant's servers. The generators would be located in one generator yard in a two-level stacked configuration. The lower level generator package would integrate a dedicated fuel tank with a capacity of 12,800 gallons. The upper level generators would have a day tank with a capacity of 600 gallons. The project would also include one 2-MW emergency generator that would provide backup electricity for the administrative building.

The new distribution substation would ultimately be owned and operated by Silicon Valley Power (SVP) as part of its distribution network. While SVP has not yet designed the 60-kilovolt (kV) transmission lines that would interconnect the new substation, SVP has estimated that one transmission line would come in to the site from the north and one from the south, both routes paralleling the existing Union Pacific Railroad rail lines. There may be up to six new transmission poles.

ENERGY COMMISSION'S SPPE PROCESS

The Energy Commission has the exclusive power to certify all thermal power plant (50 MW and greater) sites and related facilities proposed for construction in California. The SPPE process allows applicants with projects between 50 and 100 MW to obtain an exemption from the Energy Commission's jurisdiction and proceed with local approval rather than requiring Energy Commission certification. The Energy Commission can grant an exemption if it finds that the proposed project would not create a substantial adverse impact on the environment or energy resources. In this case, the WBGF is subject to the Energy Commission's licensing authority unless the exemption is granted. Should the exemption be granted, the applicant would still need to secure the appropriate licenses and permits from relevant local, state, and federal agencies.

ENERGY COMMISSION STAFF EVALUATION OF THE SPPE APPLICATION AND FURTHER STEPS

Public Resources Code section 25519(c) designates the Energy Commission as the lead agency, in accordance with the California Environmental Quality Act (CEQA), for all projects seeking an SPPE. CEQA requires the lead agency to consider the whole of the action; therefore, the Energy Commission will include the data center portion of the project in addition to the backup generation component in its analysis. Thus, any reference to the "Walsh Data Center," "WDC", or "project," means both the data center and backup generators and associated facilities.

As lead agency, the Energy Commission is required by Public Resources Code section 21080.3 and CEQA Guidelines section 15063(g) to consult with responsible agencies regarding significant environmental effects that could result from the project. Energy Commission staff (staff) has begun its review of the application and will request the appointment of a Committee of two Commissioners at the Energy Commission's July 15, 2019

¹ Maximum electrical demand of the WDC.

WALSH DATA CENTER (19-SPPE-02)
REQUEST FOR AGENCY PARTICIPATION

Business Meeting to oversee the SPPE proceeding. Over the coming months, staff will evaluate the project and prepare an environmental analysis document—for SPPE projects this typically takes the form of an Initial Study. Following publication of that document and consideration of public comments, the assigned Committee will conduct a hearing to determine whether the proposed project should be exempt from the Energy Commission's power plant certification process. This hearing will provide the public as well as local, state and federal agencies and California Native American tribes the opportunity to provide input on the exemption request. Subsequent steps include issuance of a proposed decision by the Committee, and possible adoption of that decision by the Energy Commission at a Business Meeting or hearing. The Energy Commission's regulations setting forth the SPPE process are primarily located in Title 20, California Code of Regulations sections 1934-1947.

PROJECT WEBPAGE AND LISTSERVE

The Energy Commission maintains a website for this project at: <https://ww2.energy.ca.gov/sitingcases/walsh/>. The SPPE application and related project documents are viewable by clicking the "Documents for this Proceeding (Docket Log)" link located near the upper right corner of the project webpage. The direct link to the project docket is: <https://efiling.energy.ca.gov/Lists/DocketLog.aspx?docketnumber=19-SPPE-02>.

To receive electronic notices of all project-related activities and documents related to the exemption evaluation, go to the Energy Commission's listserve web page (https://ww2.energy.ca.gov/listservers/index_cms.html), and check the "walsh" box under "PROJECTS UNDER REVIEW."

AGENCY PARTICIPATION

Your agency's participation is encouraged and would consist of identifying and working to resolve issues of concern to your agency in connection with the SPPE proceeding. Pursuant to Title 20, California Code of Regulations, section 1936(d), we request any "analyses, comments, and recommendations" on the exemption application which you wish to provide. Again, please note that should the exemption be granted, the applicant would then be responsible for obtaining all necessary local, state, and federal permits required to construct and operate the project, which may entail additional analysis by relevant permitting authorities.

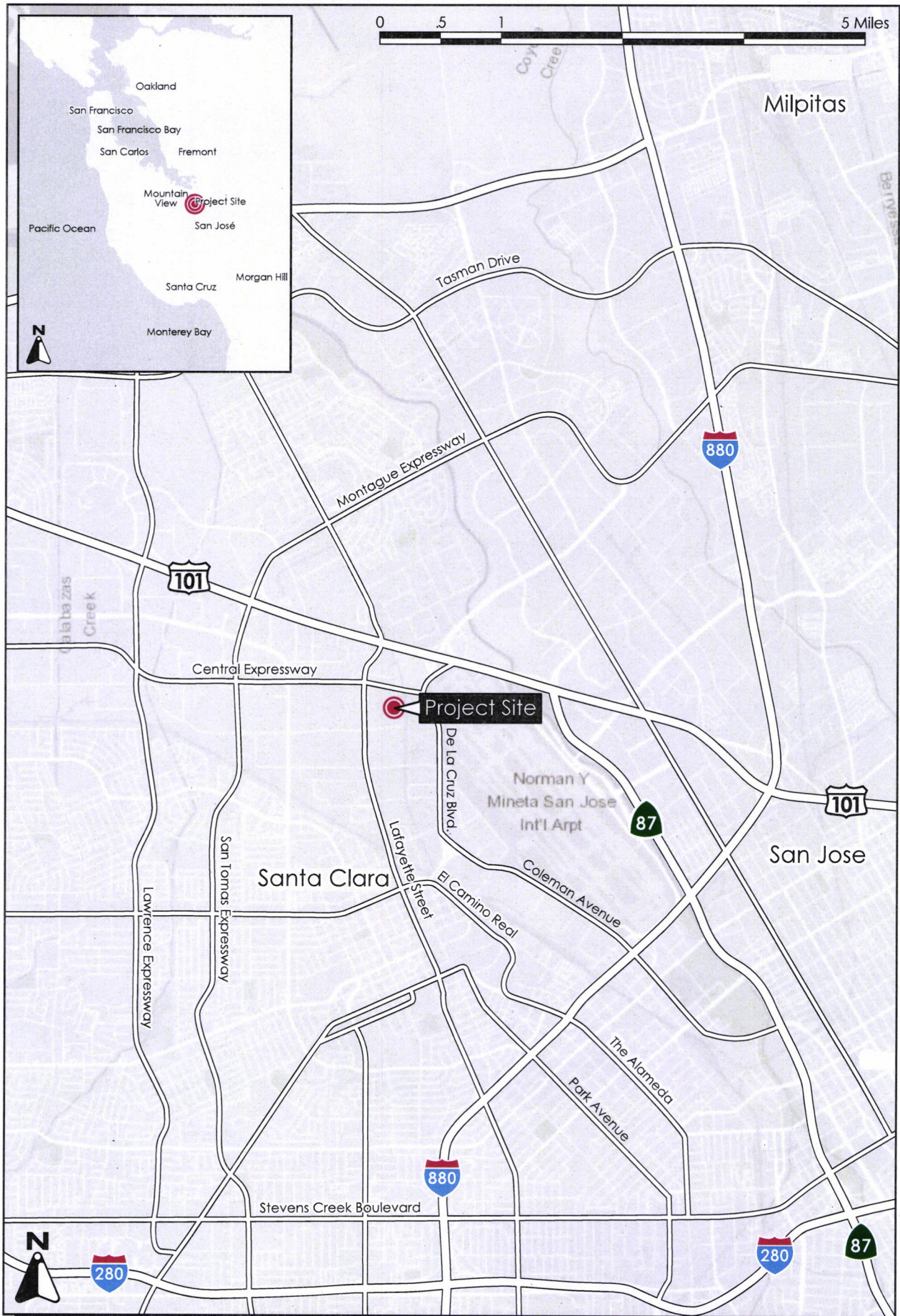
You may provide comments at any time, however, pursuant to Title 20, California Code of Regulations, section 1936(d), any written comments your agency may have must be filed with the Energy Commission prior to the conclusion of the hearing, unless otherwise specified by law or by order of the presiding committee member. The date of this hearing is not yet known, but pursuant to Title 20, California Code of Regulations, section 1944(b) it should be held no later than October 7, 2019 unless otherwise directed by the presiding member. The Energy Commission will provide advance notice of the hearing via the listserve once it has been scheduled.

You may submit comments electronically. To use the Energy Commission's electronic commenting feature, go to the Energy Commission's webpage for this proceeding, cited above, click on the "Comment on this Proceeding" or "Submit e-Comment" link, and follow the instructions in the online form. Be sure to include the project name in your comments. Once filed, you will receive an e-mail with a link to them and the comments will be part of the proceeding's public record.

If you have any questions or need additional information on how to participate in the Energy Commission's review of the proposed project, please contact Leonidas Payne, Project Manager, at (916) 651-0966, or by email to Leonidas.Payne@energy.ca.gov.

Attachments:

Project Location Figure from SPPE Application
Site Plan Figure from SPPE Application
Elevation Drawing from SPPE Application

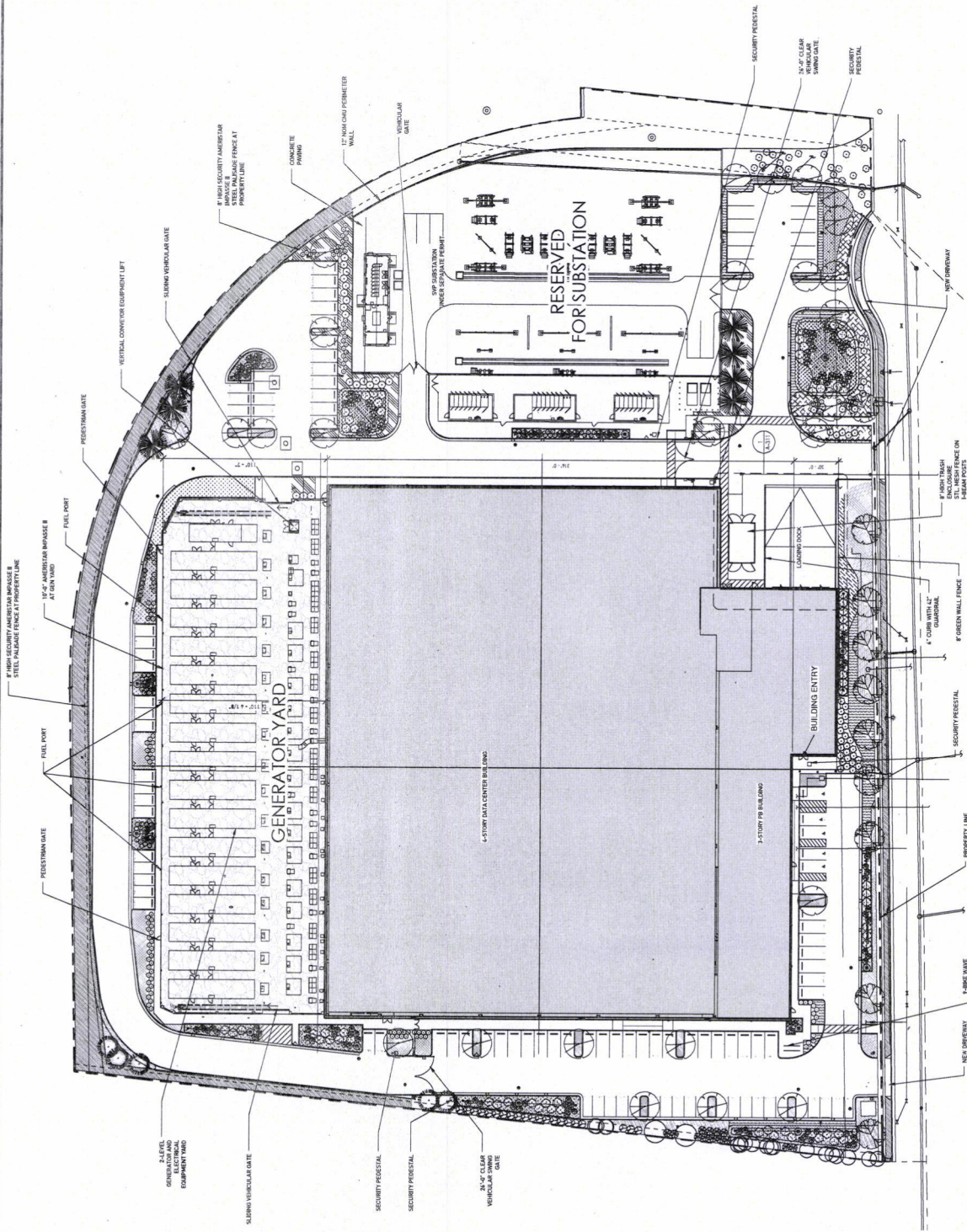


REGIONAL MAP

FIGURE 1-1

LOT DATA

LOT AREA	344,124 SF
BUILDING FOOTPRINT	
LOT COVERAGE	32.4%
BUILDING SF	435,050 SF
FAR	1.26



Source: Dofferweich, Carlson Mehner Design, Inc., 5/28/2019.

SITE PLAN

FIGURE 2-1

