

DOCKETED	
Docket Number:	18-MISC-04
Project Title:	Vehicle Grid Integration Roadmap Update
TN #:	225134
Document Title:	SDGE Presentation - SDG&E's Design of Grid Integrated Rates
Description:	By Cynthia Fang - advanced rates design presentation
Filer:	System
Organization:	SDGE/Cynthia Fang
Submitter Role:	Public
Submission Date:	10/29/2018 11:22:34 AM
Docketed Date:	10/29/2018

Comment Received From: Cynthia Fang
Submitted On: 10/29/2018
Docket Number: 18-MISC-04

advanced rates design presentation

presentation for VGI Roadmap Update Workshop

Additional submitted attachment is included below.



A  Semptra Energy utility®

CEC Workshop: CA Vehicle-Grid Integration Roadmap

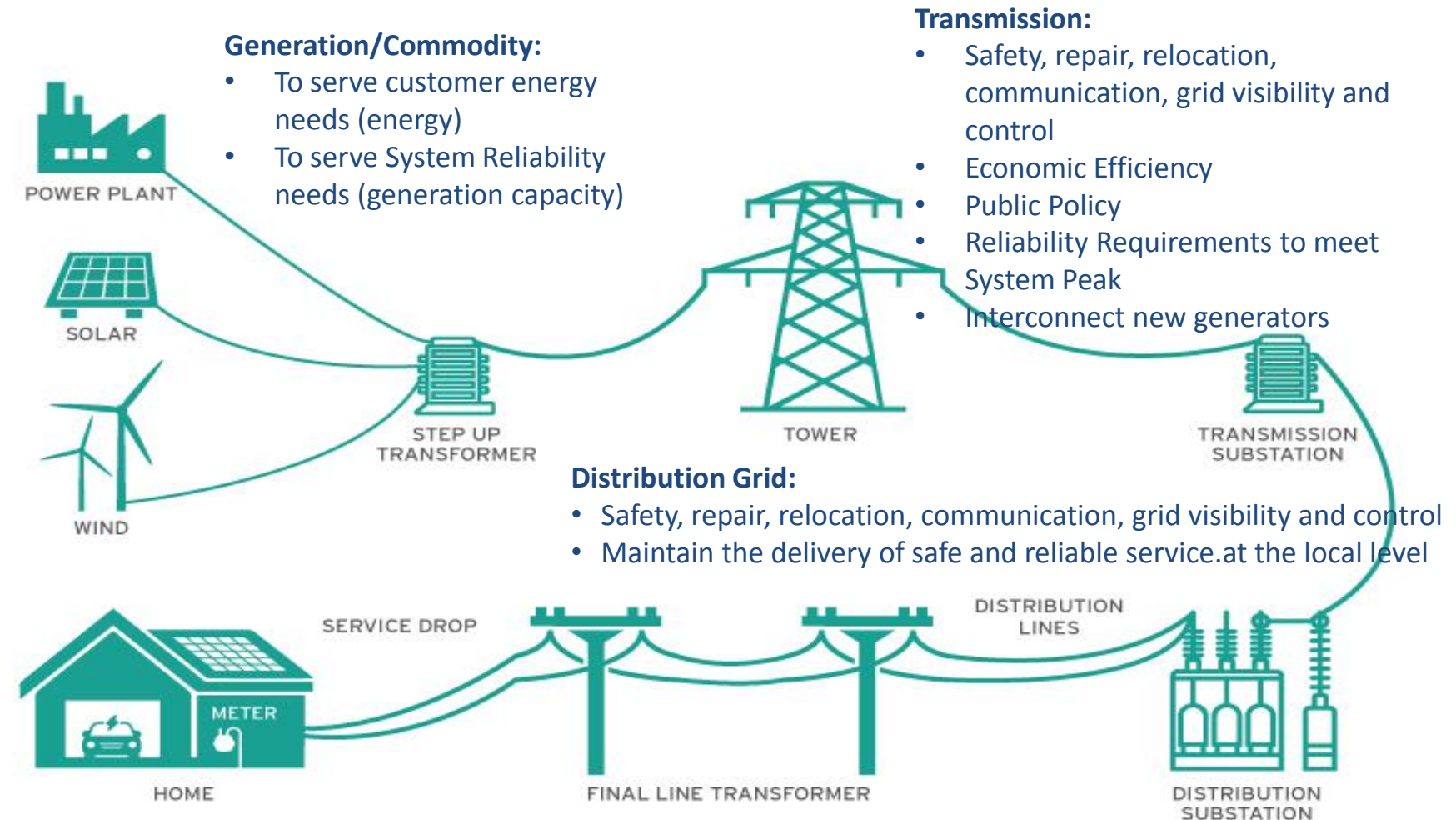
SDG&E's Design of Grid Integrated Rates

Cyndee Fang

Manager of Customer Pricing

October 29, 2018

The Utility System



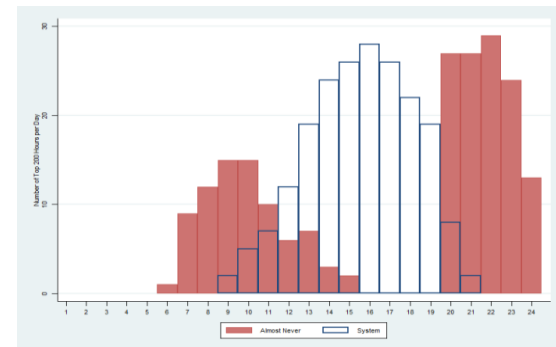
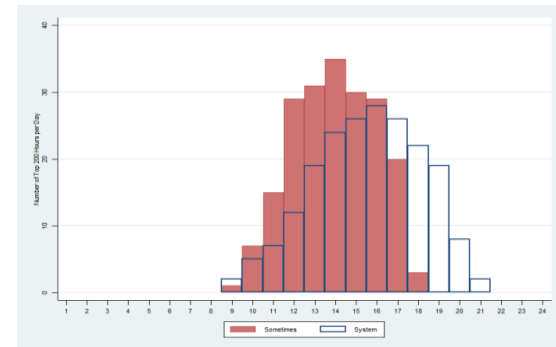
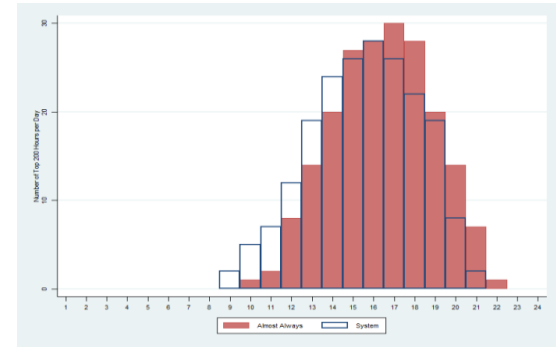
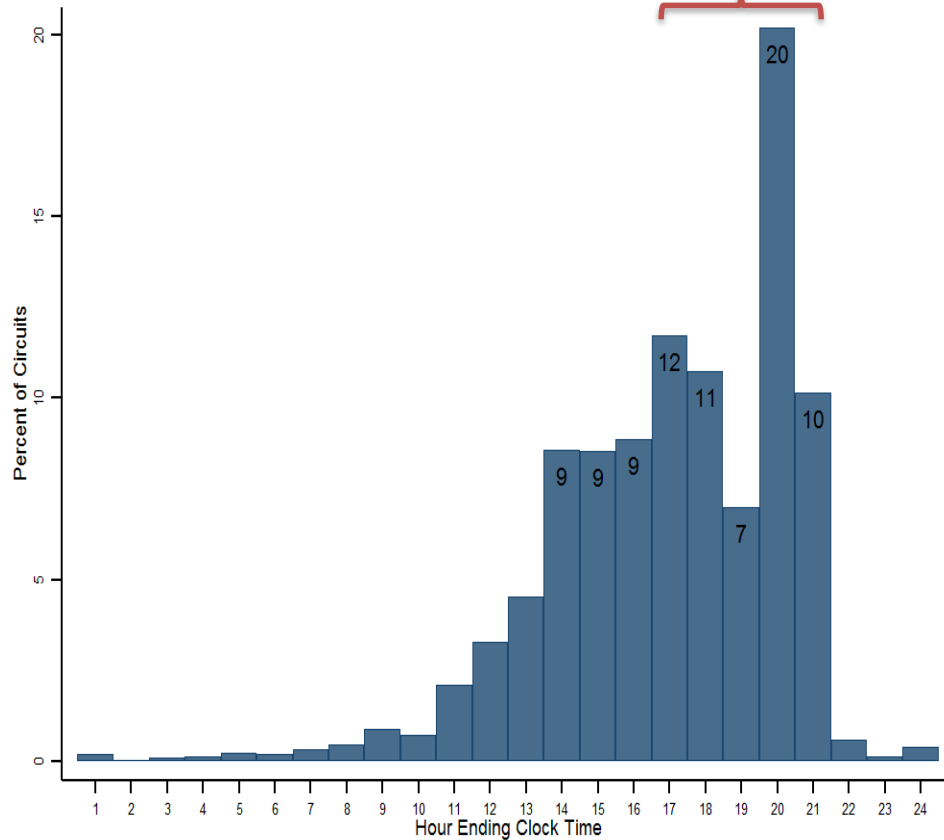
Diversity of Peak of Distribution Circuits

Distribution of SDG&E's Circuit Peaks

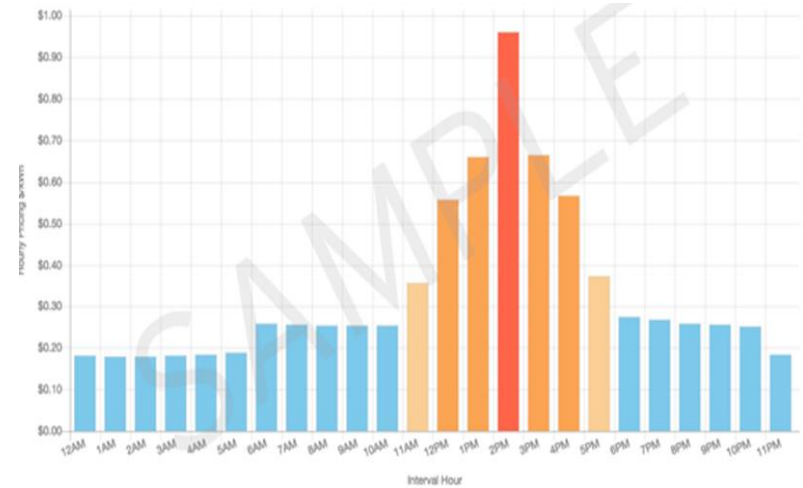
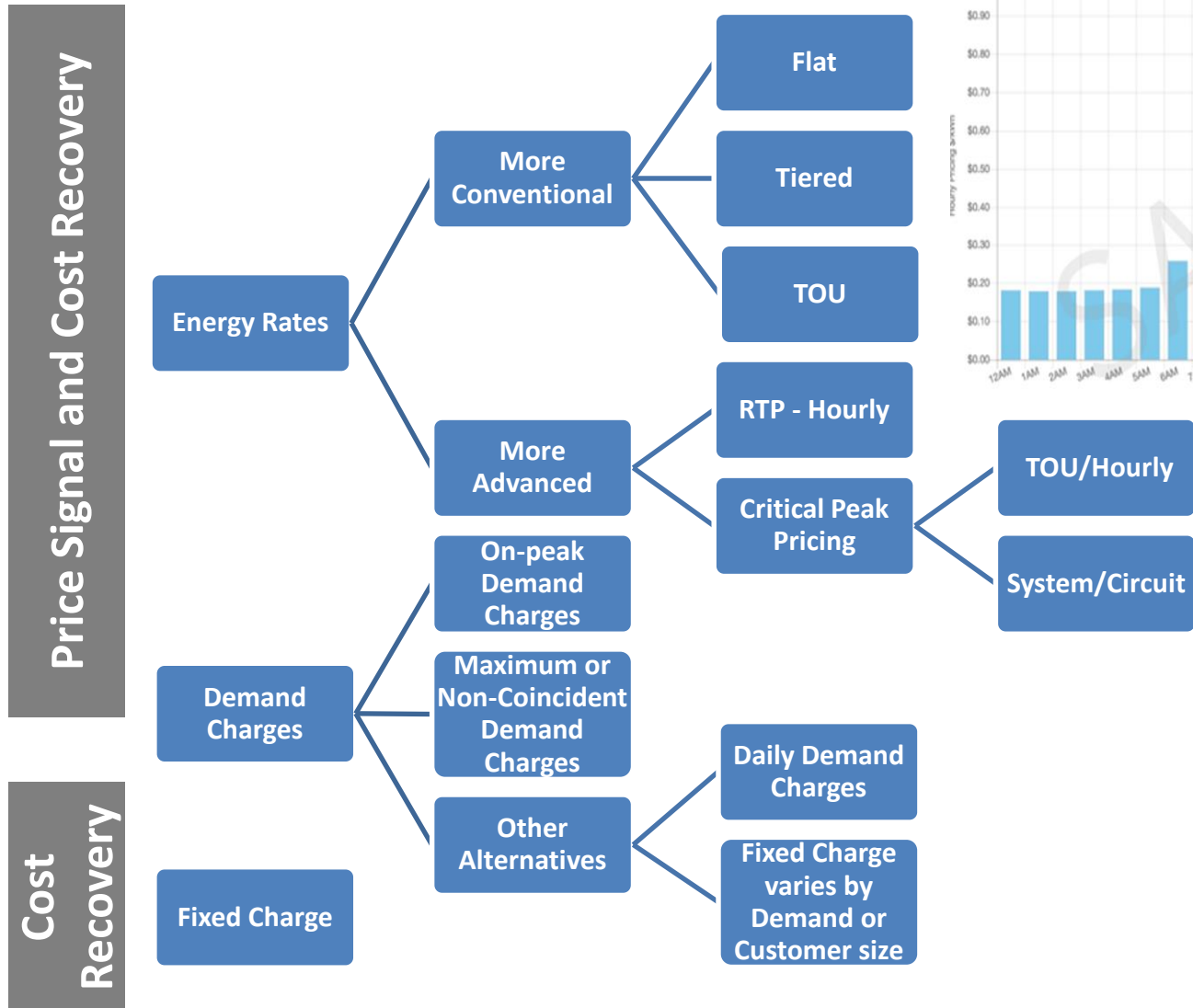
2014-2016

By Hour Ending

4pm-9pm
On-peak



Rate Design Tools – Current and Future



CPP is an energy option that provides a “capacity” price signal

Circuit-level CPP provides a locational price signal while still charging all customers the same price