

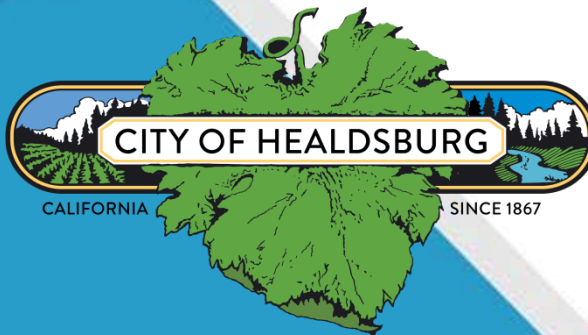
<b>DOCKETED</b>	
<b>Docket Number:</b>	18-IEPR-05
<b>Project Title:</b>	Climate Adaptation and Resiliency
<b>TN #:</b>	224364
<b>Document Title:</b>	Wildfires & Utility Prevention
<b>Description:</b>	Presentation by Terry Crowley, NCPA, at the August 2 Joint Agency Workshop on Climate Adaptation and Resiliency
<b>Filer:</b>	Denise Costa
<b>Organization:</b>	California Energy Commission
<b>Submitter Role:</b>	Commission Staff
<b>Submission Date:</b>	8/1/2018 8:04:59 PM
<b>Docketed Date:</b>	8/2/2018



# Wildfires & Utility Prevention

Terry Crowley  
Healdsburg Utility Director

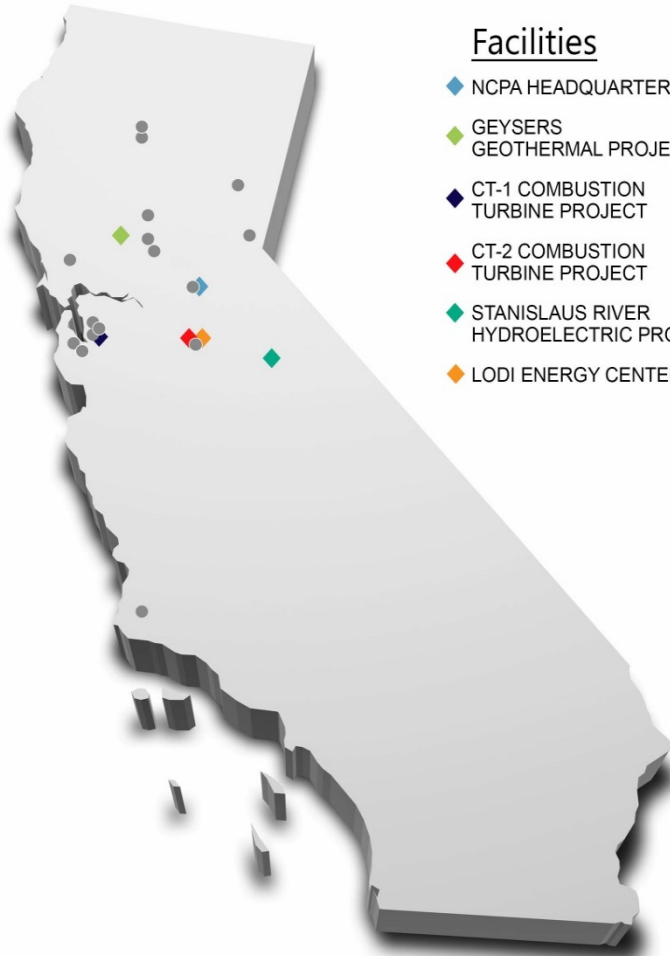
August 2, 2018



# •NCPA Overview

## Members

ALAMEDA  
BART  
BIGGS  
GRIDLEY  
HEALDSBURG  
LODI  
LOMPOC  
OAKLAND  
PALO ALTO  
PLUMAS-SIERRA  
REDDING  
ROSEVILLE  
SANTA CLARA  
SHASTA LAKE  
TRUCKEE DONNER  
UKIAH



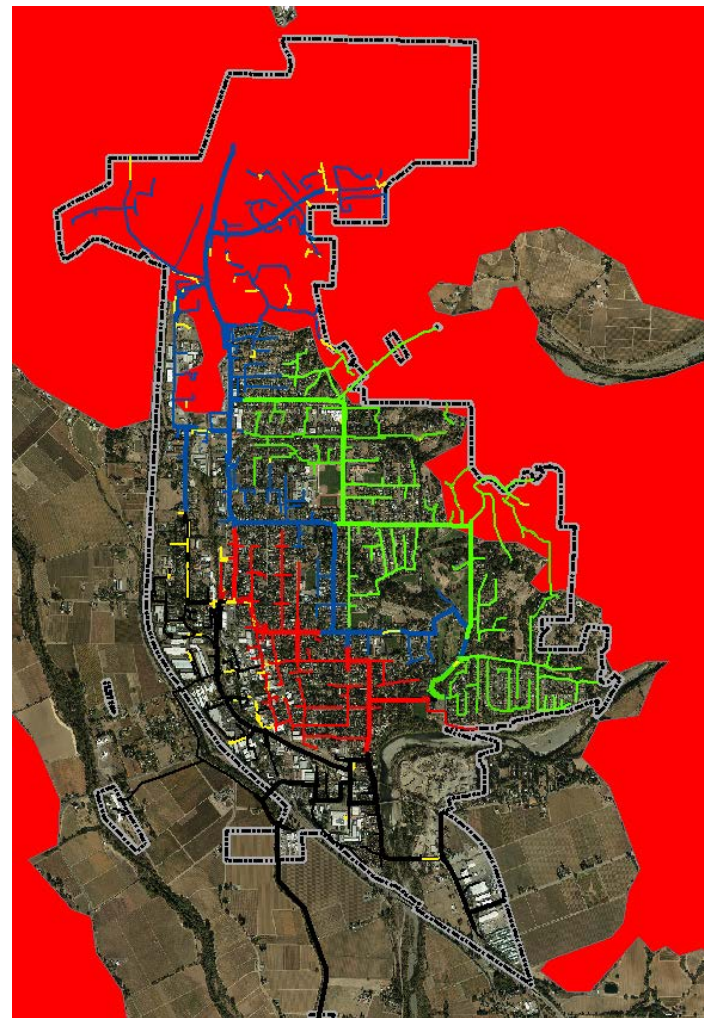
## Facilities

◆ NCPA HEADQUARTERS  
◆ GEYSERS GEOTHERMAL PROJECT  
◆ CT-1 COMBUSTION TURBINE PROJECT  
◆ CT-2 COMBUSTION TURBINE PROJECT  
◆ STANISLAUS RIVER HYDROELECTRIC PROJECTS  
◆ LODI ENERGY CENTER

- California Joint Powers Agency (formed by members to get economies of scale)
- 15 members and 1 associate member serving 700,000 residents in communities throughout Northern California (city-owned and special districts)
- Builds and operates jointly owned power plants and operates a power pool for members
- Represents members before legislative and regulatory bodies
- Provides Power Management Services to non-Members, including Community Choice Aggregators (CCA's)

## Healdsburg's Utility Service Area

- 60 miles of line within 4 square miles
- Roughly 50/50 mix of underground and overhead
- Overhead lines run through high fire risk areas (Wildland Urban Interface).
- Annual tree trimming to maintain no less than 4 feet of clearance at any time.
- City Fire Department provides services to areas outside of City limits.



## Healdsburg's Prevention Efforts

- Visual inspections each year of entire system Detailed & Intrusive per GO165
- Work to complete all identified maintenance within 12 months.
- Pro-actively rebuild and harden facilities.
- Working closely with other City Departments (Police, Fire, Water, Streets) to plan and prepare for wildfire.
- Developing actions include
  - Increased inspections ahead when red-flag and high winds forecasted.
  - Faster and more sensitive tripping for elevated risk days.





## NCPA's Wildfire Mitigation Program

- Much of NCPA's generation plants are in areas of high-fire danger (Tier 2 Tier 3)
- Aggressive vegetation management around NCPA facilities and rights-of-way
  - CalFire Conservation Camp Program
  - Local Contractors
- Lidar & ground-based vegetation surveys
- Coordination with Forest Partners
  - USFS / SPI / State Park
  - CalFire

