

DOCKETED	
Docket Number:	18-IEPR-05
Project Title:	Climate Adaptation and Resiliency
TN #:	224360
Document Title:	Actions to Address Wildfire Risks for Energy Infrastructure and Operation
Description:	Presentation by Brian D'Agostino, SDG&E, at the August 2 Joint Agency Workshop on Climate Adaptation and Resiliency
Filer:	Denise Costa
Organization:	California Energy Commission
Submitter Role:	Commission Staff
Submission Date:	8/1/2018 7:48:36 PM
Docketed Date:	8/2/2018



A  Sempra Energy utility®

2018 IEPR Update Joint Agency Workshop on Climate Adaptation and Resiliency: Actions to Address Wildfire Risks for Energy Infrastructure and Operation

Brian D'Agostino | Director | **San Diego Gas & Electric**
Fire Science & Climate Adaptation
O: 619.725.5195 | M: 617.519.9926
bdagostino@semprautilities.com

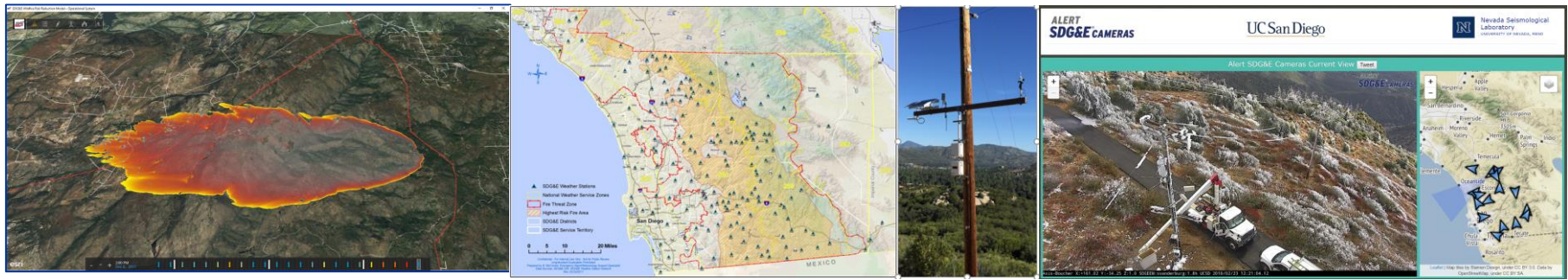


A  Sempra Energy utility®

Fire Science and Climate Adaptation Department

Mission: Support SDG&E's corporate mission to improve lives and communities through mitigating wildfire and climate risks. This mission will be achieved through:

- Cutting-edge weather technology
- Fire science and analytics
- Stakeholder relationships and enhanced community resilience
- Maintaining and expanding the fire-aware culture at SDG&E
- Implementing a state-of-the-art climate adaptation strategy
- Continued development of the Community Fire Safety Program



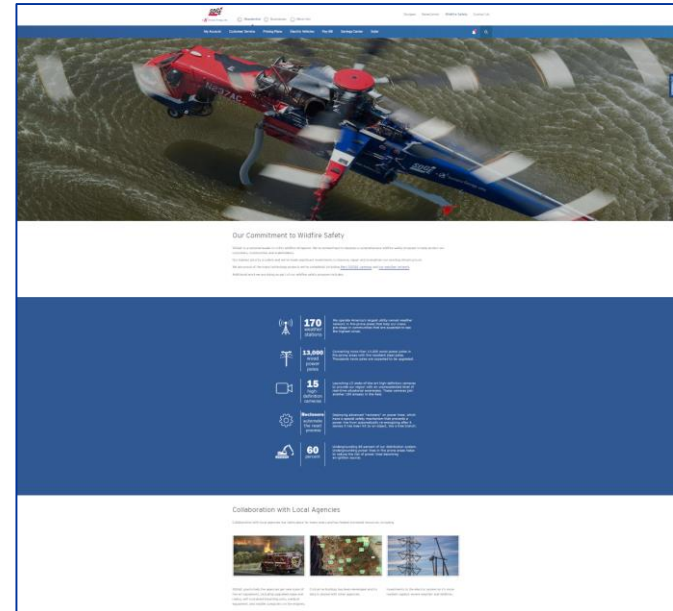
2018 Communications Enhancements

Notification Process

- Finalizing ability to create lists based on isolation devices and fuses (granularity)
- Enhancing outbound messaging and customization
- Notification Campaign to High Fire Threat District customers (contact improvement)

Customer Education

- Newsletter/Bill Inserts/Newspaper communications in August
- Refresh of SDG&E's Wildfire Safety Website
 - One-stop resource page
 - Explanation/timeline of de-energization process
 - Developing de-energization educational video



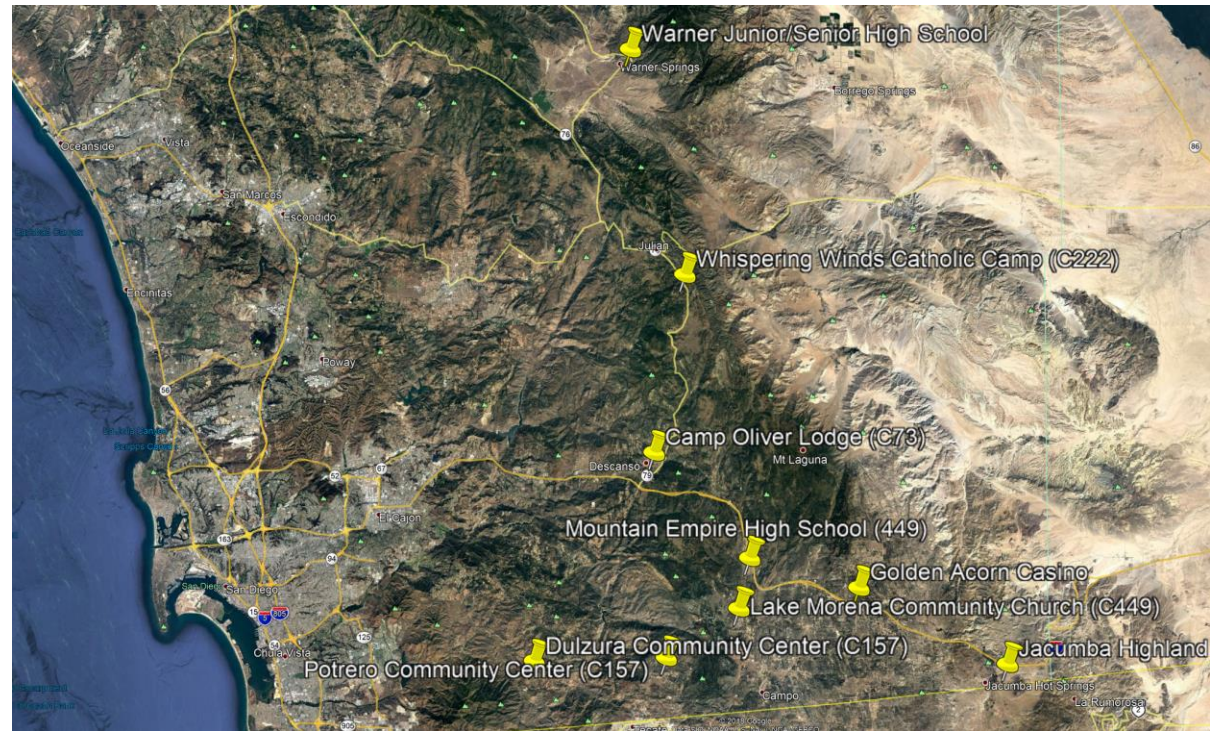
Community Resource Center Locations

Nine community resource centers being developed by SDG&E and community partners across the backcountry in areas prone to extreme fire weather conditions and pro-active de-energizations.

- Provide water, communications, snacks, cell phone charging, etc.
- Staffed by CERTs, Red Cross and SDG&E



Location of SDG&E Community Resource Center



Resiliency and Longer-Term Solutions

Unmanned aircraft systems with advanced image processing

- Spot infrastructure risks that are fire hazards

Advanced data management and fire safety training

- Analytical weather and fire science tools

Mobile battery systems

- Demonstrate battery systems suitable to be moved into fire zones to aid in recovery

Fire resilient homes

- Essential services available for fire mitigation and survival

Fire-resilient power distribution system

- Strategic positioning of emergency equipment, communication infrastructure, microgrids, and operations capabilities in fire-prone areas

Falling conductor detection scheme

- Identifies break of a phase conductor and trips the affected circuit section before the conductor hits the ground