

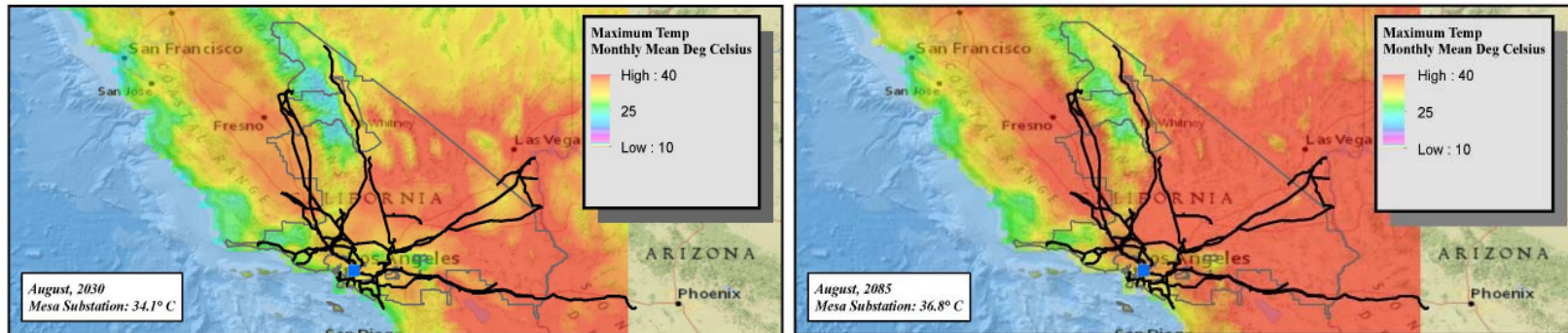
## DOCKETED

<b>Docket Number:</b>	17-IEPR-09
<b>Project Title:</b>	Climate Adaptation and Resiliency
<b>TN #:</b>	220924
<b>Document Title:</b>	SCE Climate Resilience and Disadvantaged Communities
<b>Description:</b>	***SUPERSEDES TN: 220908 ***** 8.29.17: Updated Presentation by Adam Smith of SCE
<b>Filer:</b>	Raquel Kravitz
<b>Organization:</b>	Southern California Edison
<b>Submitter Role:</b>	Public
<b>Submission Date:</b>	8/28/2017 12:31:17 PM
<b>Docketed Date:</b>	8/28/2017

# SCE Climate Resilience and Disadvantaged Communities

---

8/29/17



# Overview

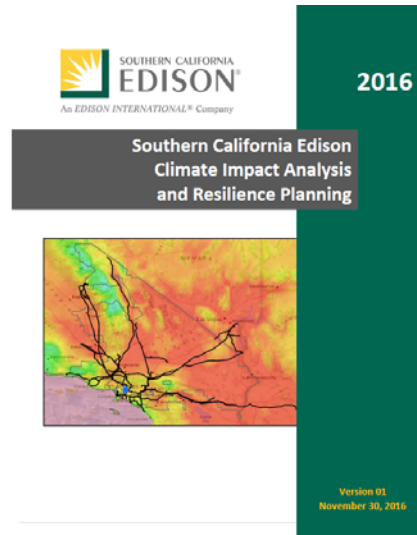
- Update on SCE Climate Resilience
- Disadvantaged Community Outreach
- Developing Pilot: Advanced Energy Communities
- Closing Remarks



# Update on SCE Climate Resilience

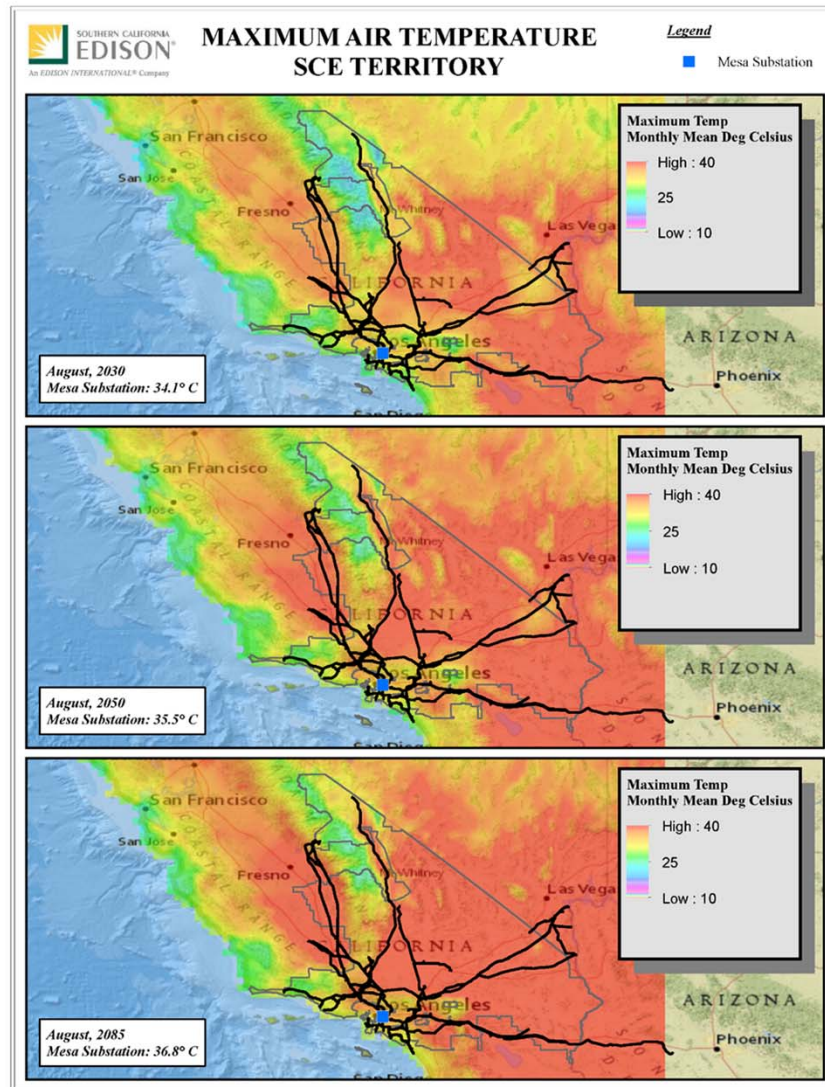
---

# Developments since last IEPR Workshop



- **SCE submitted a joint Climate Vulnerability and Resilience Strategy to DOE**
  - Identified 10 resilience strategies through company-wide workshops
- **On Nov. 2, 2016** SCE held a company-wide emergency response exercise utilizing some of the scenarios from our climate vulnerability analysis
- **Currently**, SCE is conducting a mitigation review process to facilitate the selection of defined long-term adaptation strategies that will be adopted across the organization.

# Updates to CalAdapt, have improved our analysis



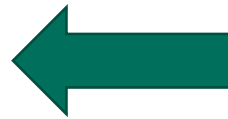
Mesa Substation	2030	2050	2085
AvgAirTemp (c) Aug	27	28.3	29.6
FireRisk Multiplier	0	0	0
MaxAirTemp (c) Aug	34.2	35.5	36.8
MinAirTemp (c) Jan	11.9	11.2	6.5
NetSurfRadi (watt per square meter)	25	25.6	28.9
Precip(mm per month)	0	35.4	74.2
Runoff (mm per month)	0	1.6	5.1
SnowWaterEquiv(mm per month)	0	0	0

SCE joining LA County regional collaborative, and will work with other collaboratives and local governments in our service territory to prepare.

**LARC**

Los Angeles Regional Collaborative  
for Climate Action and Sustainability

Recognizing the need for cross-jurisdictional collaboration within the large and diverse LA County region, LARC coordinates climate resiliency efforts with land use, transportation, infrastructure, energy, water, public health, emergency response, and resource management partners.



This form of collaboration is critical to the adaptation planning of an electric utility.

The resilience plans of the communities we serve will inform our plan, and vice versa.

We need to work together.



# SCE's Climate Resilience timeline targets the 2020 General Rate Case

2015	2016	2017-2019	2020
<b>Research &amp; Analysis</b> <ul style="list-style-type: none"> <li>- Joined DOE partnership</li> <li>- Developed climate adaptation tool</li> <li>- Submitted climate impact analysis to DOE</li> </ul>	<b>Mitigation Development</b> <ul style="list-style-type: none"> <li>- Held course of action workshops to identify viable mitigation efforts</li> <li>- Socialized with SCE senior leadership</li> <li>- Submit mitigation report to DOE</li> </ul> <b>Research &amp; Analysis</b> <ul style="list-style-type: none"> <li>- Initiate cost-benefit analysis of climate impacts and mitigation measures</li> </ul>	<b>Research &amp; Analysis</b> <ul style="list-style-type: none"> <li>- Update climate analysis with additional factors and data from Cal-Adapt 2.0</li> </ul> <b>Implementation</b> <ul style="list-style-type: none"> <li>- Integrate climate projections into existing planning models</li> <li>- Present mitigation strategies to oversight committees</li> <li>- Build climate investment strategies using projections</li> </ul> <b>Outreach: Disadvantaged Community and Regional</b> <ul style="list-style-type: none"> <li>- Bring feedback to inform our actions</li> </ul>	<b>Implementation</b> <ul style="list-style-type: none"> <li>- Build climate adaptation actions into the 2020 General Rate Case</li> </ul>



# SCE still involved in DOE Partnership, looking forward to California equivalent

## DOE Partnership Success

- Worked with partner utilities to share best practices
- Created Adaptation Planning Tool; recognized by (DOE)
- Submit SCE Climate Impact Analysis and Resilience Planning document to DOE detailing:
  - Overview of SCE resilience planning
  - Climate impact assessment
  - Potential mitigation measures

**SCE supports the recommendation to start a similar CA-specific Partnership**, as highlighted in the state's Safeguarding California Plan

- This effort would formalize existing cooperation and be a useful for identifying best practices



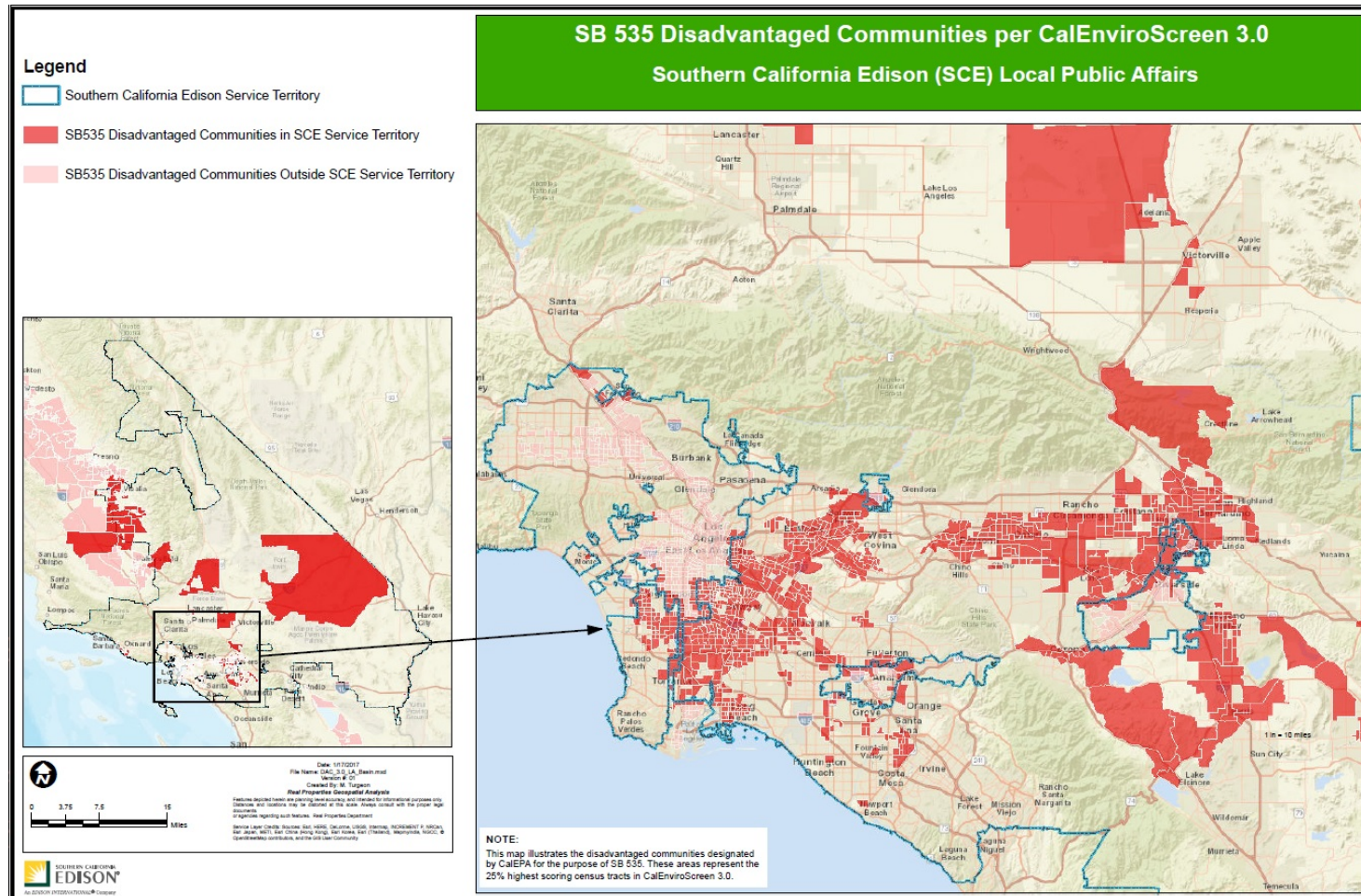


# Disadvantaged Community Outreach

---

# Disadvantaged Communities in SCE Service Territory

- 45% of California's DACs are located in SCE's service territory
- 40% of our residential households are in DACs and/or have subsidized electric rates.



# Partnering for Disadvantaged Community Outreach

- Partnership with [The Greenlining Institute](#), to develop community-centric solutions for healthy air and a healthy climate.
- Greenlining will facilitate a collaborative conversation between SCE and organizations working in low-income communities disproportionately impacted by air emissions and other environmental influences.
- SCE recently convened 2 workshops with community, faith-based, and environmental groups to identify and start prioritizing efforts that utilities and other parties can undertake to:
  - Improve access to clean energy solutions in DACs
  - Includes developing pilots, regulatory and/or legislative initiatives focused on EVs, and community/roof-top solar





# Developing Pilot: Advanced Energy Communities

---

# ADVANCED ENERGY COMMUNITY PROJECT FOR AVOCADO HEIGHTS / BASSETT

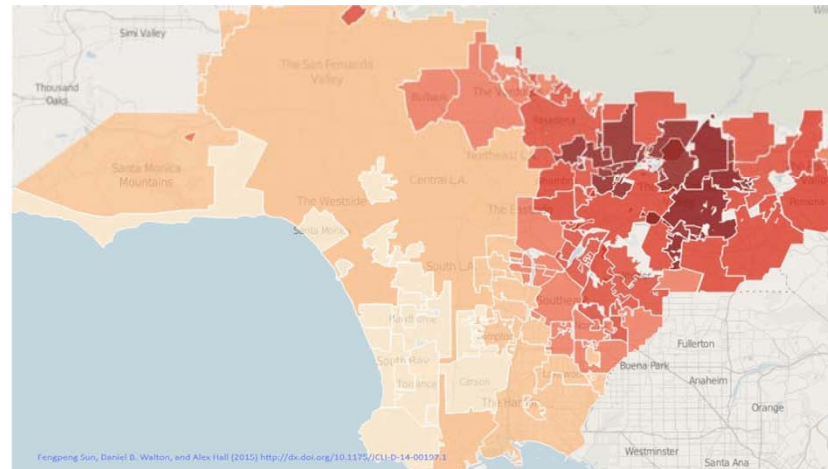
## Resilience Challenge:

San Gabriel Valley extreme heat days  
(>95°F) Used to be: **32 days / year**  
But over the next 20 years, this is  
expected to rise to **74 days / year**



## Pilot Development:

Community Solar + Energy Efficiency in  
Disadvantaged Communities under a grant  
from the CEC

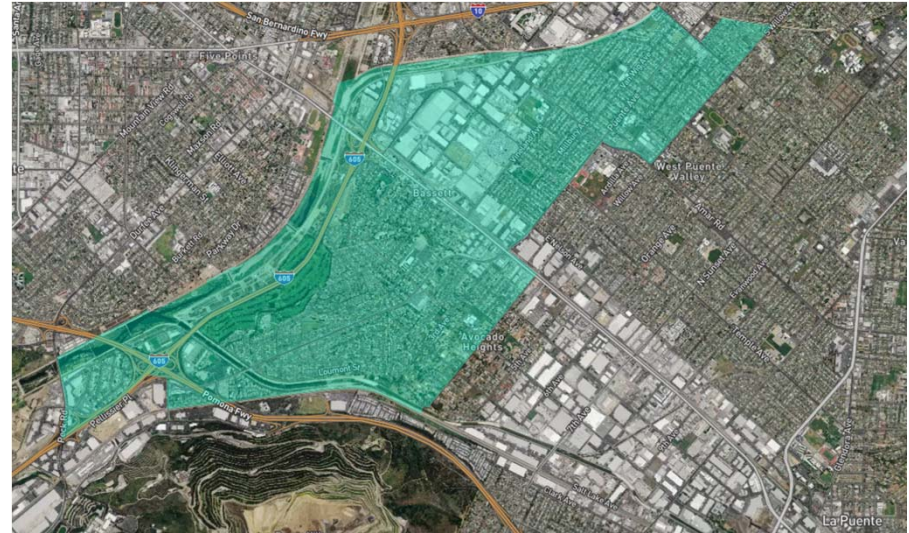




# ADVANCED ENERGY COMMUNITY PROJECT FOR AVOCADO HEIGHTS / BASSETT

## Participants would:

1. Be provided with energy efficiency upgrades for their homes at *no upfront cost*
2. Pay back the cost of the upgrades through their energy bill
3. See reduced electricity bills



## Financial benefits:

- Lower energy costs, improved efficiency of lighting, cooling and heating systems

## Health benefits:

- A more comfortable home, better indoor air quality
- Reduction in heat-related health impacts like asthma, heat exhaustion, heat stroke, cardiovascular conditions

This Pilot could serve as a useful model for other regions.

SCE looks forward to its role as a Technical Advisor





# Closing Remarks

---