

DOCKETED

Docket Number:	17-IEPR-09
Project Title:	Climate Adaptation and Resiliency
TN #:	220881-1
Document Title:	Panel Discussion The California Climate Console as a Planning and Siting Resource for Large Renewable Projects
Description:	8.29.17 Presentation by Scott Flint of CEC
Filer:	Raquel Kravitz
Organization:	California Energy Commission
Submitter Role:	Commission Staff
Submission Date:	8/25/2017 10:11:58 AM
Docketed Date:	8/25/2017



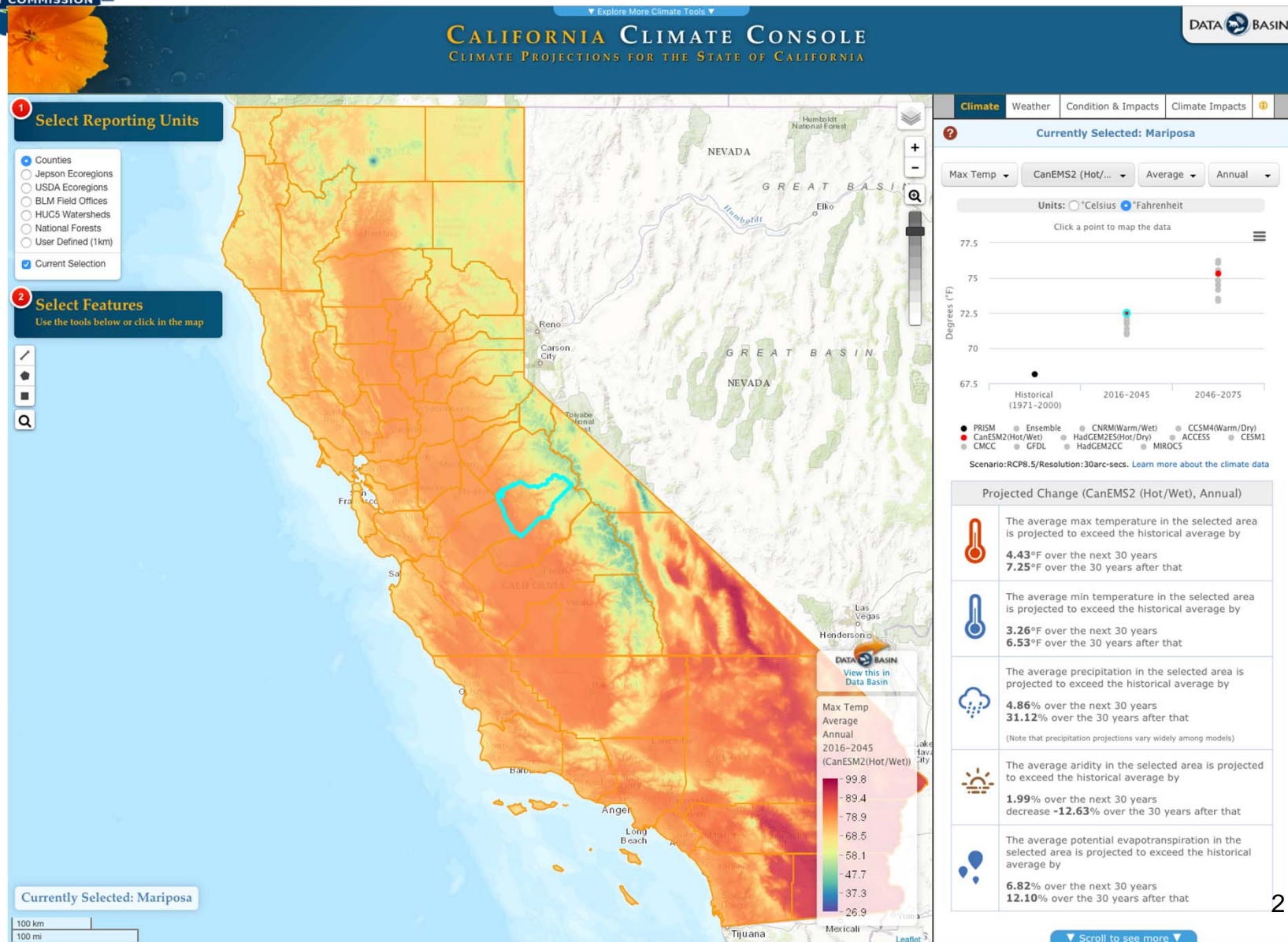
Panel Discussion: *The California Climate Console as a Planning and Siting Resource for Large Renewable Projects*

California Energy Commission
IEPR Workshop
Art Rosenfeld Hearing Room
Sacramento, California

August 29, 2017

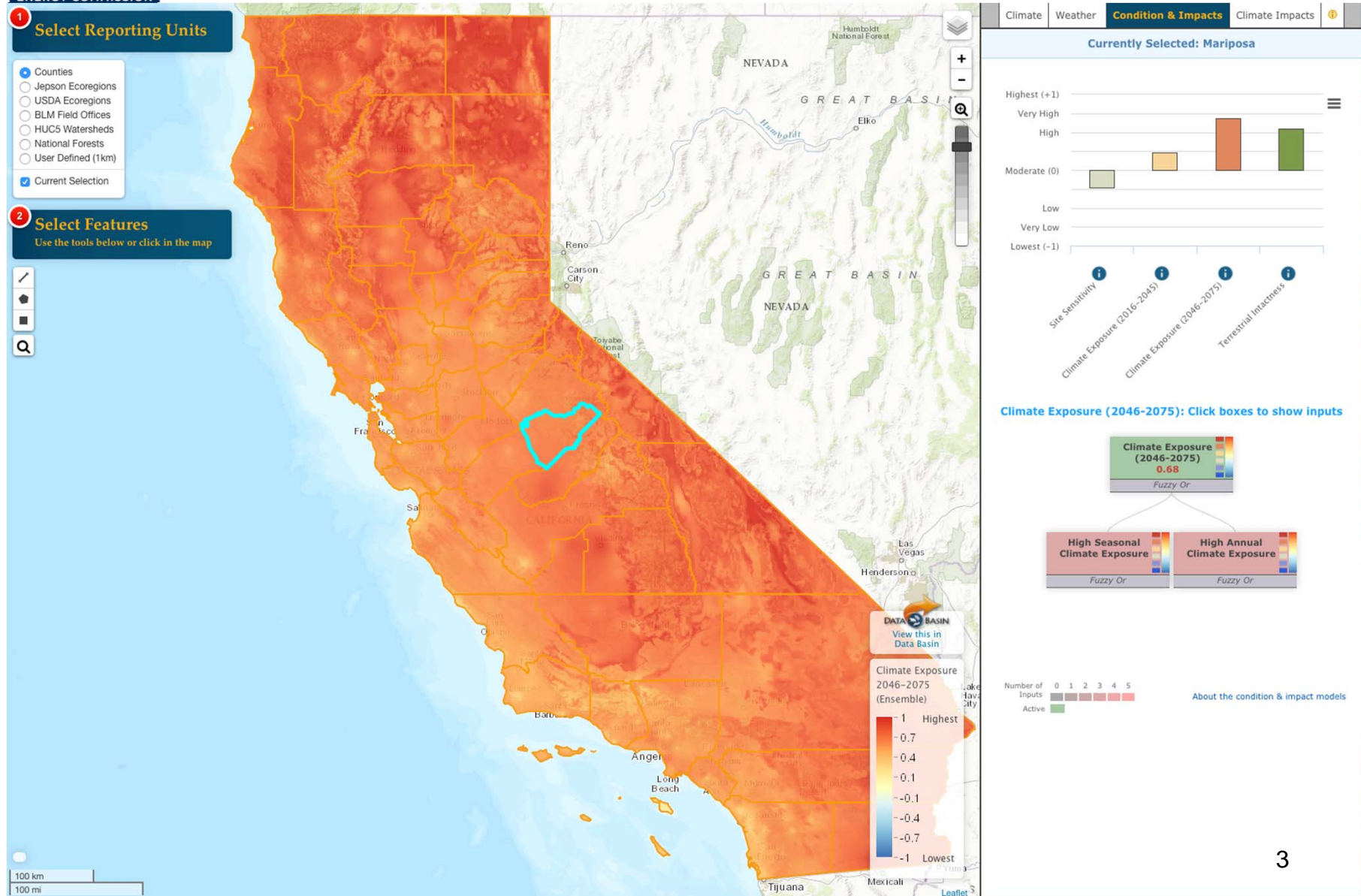


CALIFORNIA ENERGY COMMISSION



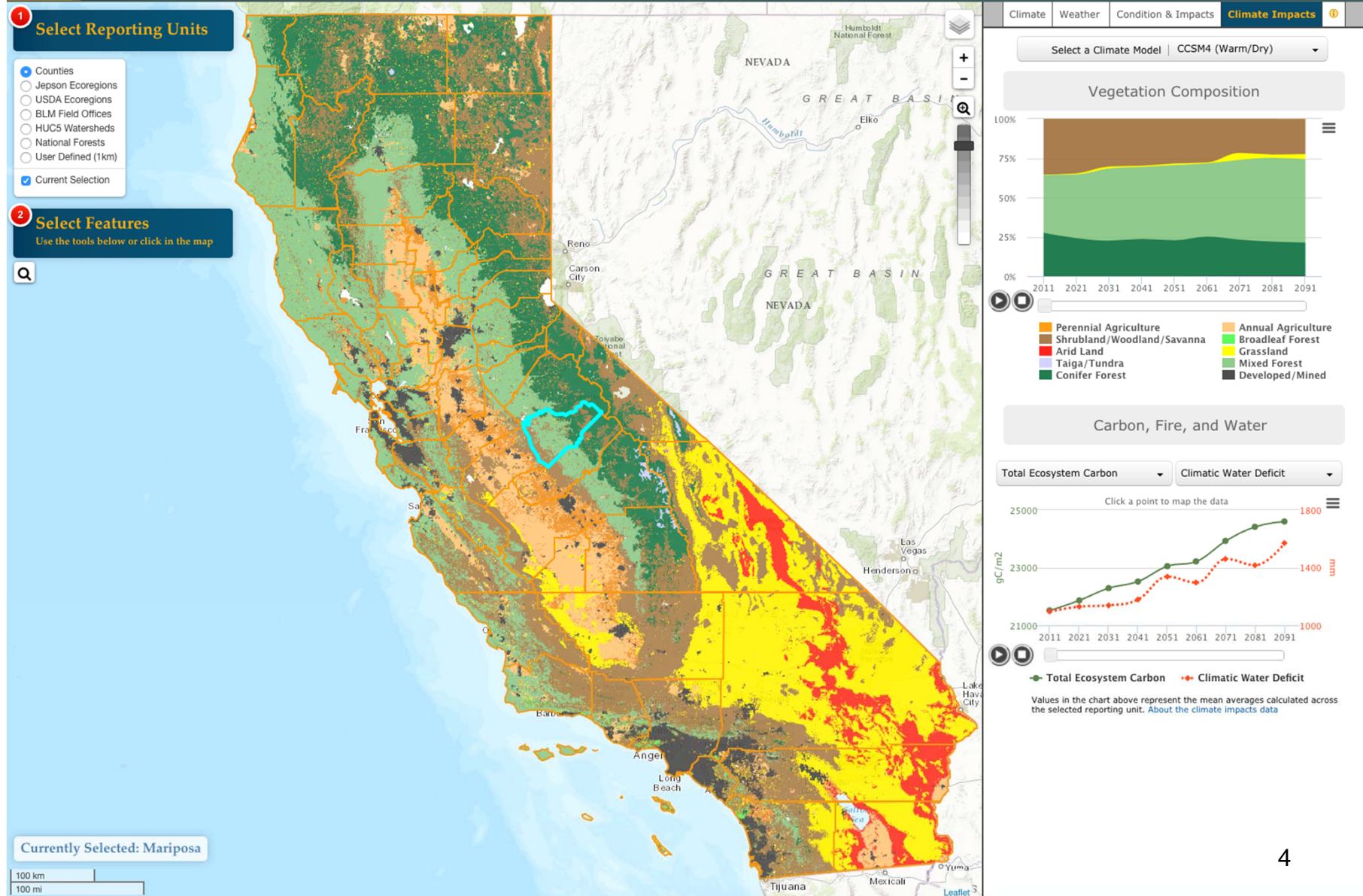


CALIFORNIA ENERGY COMMISSION



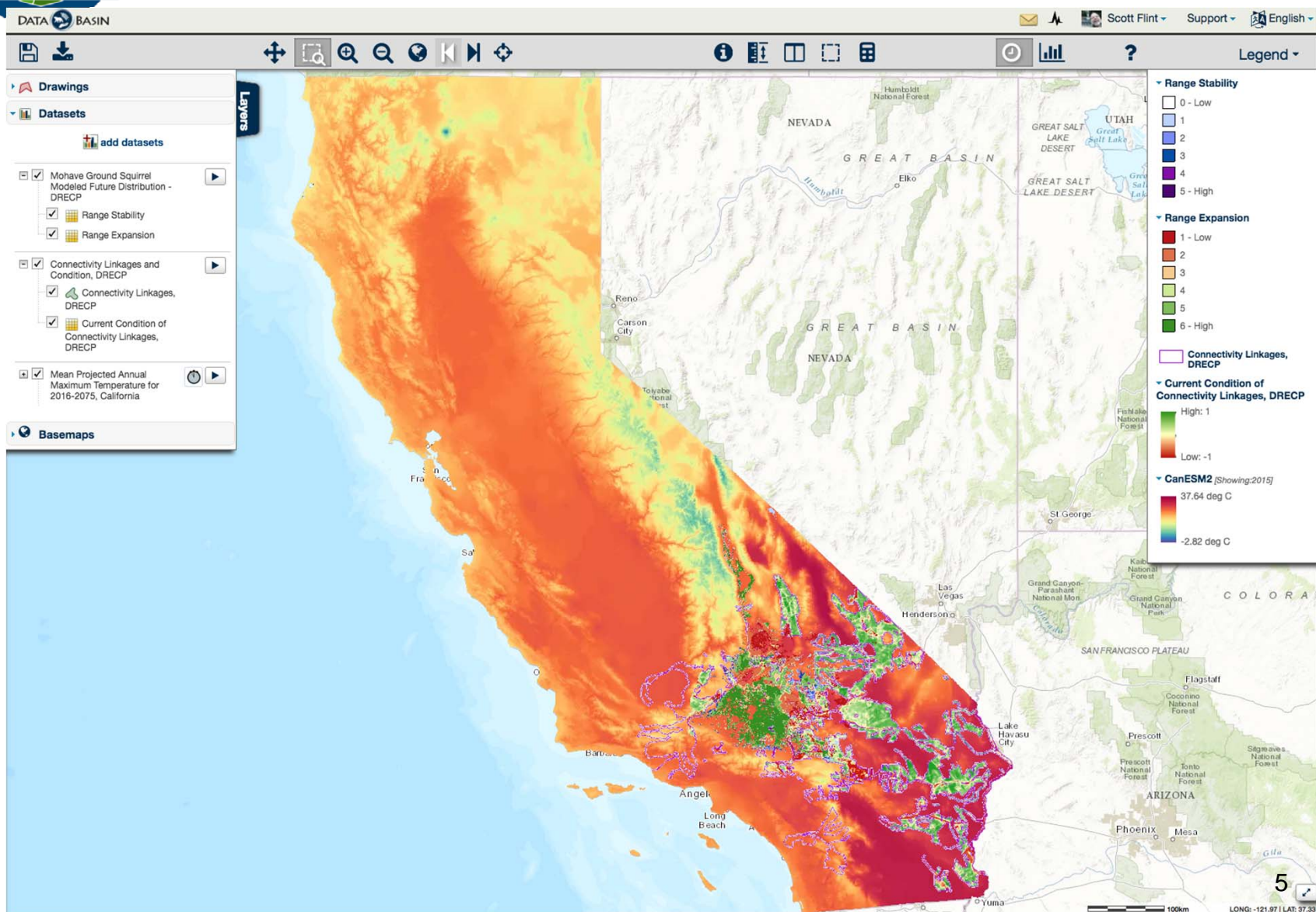


CALIFORNIA ENERGY COMMISSION



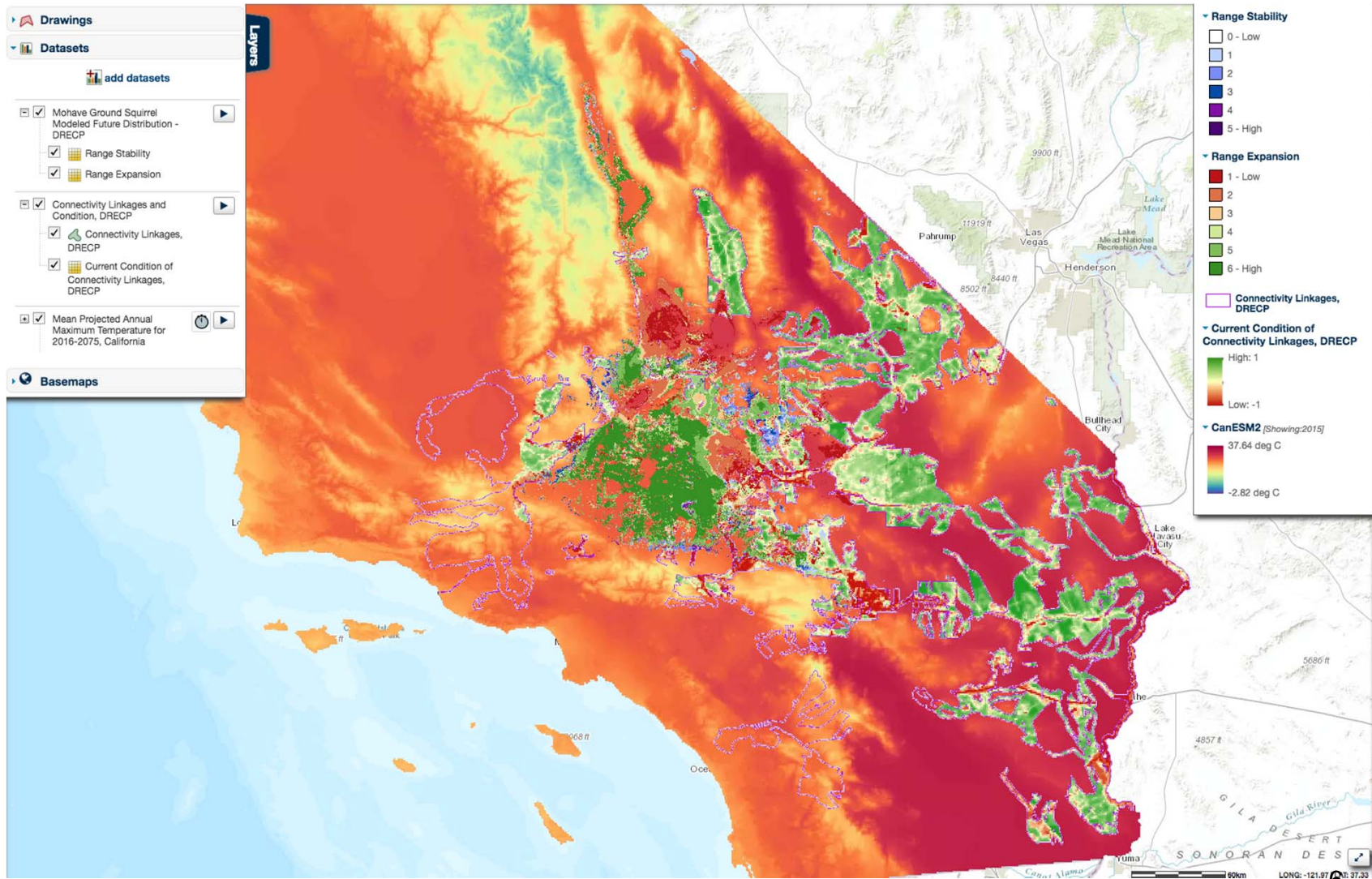


CALIFORNIA ENERGY COMMISSION



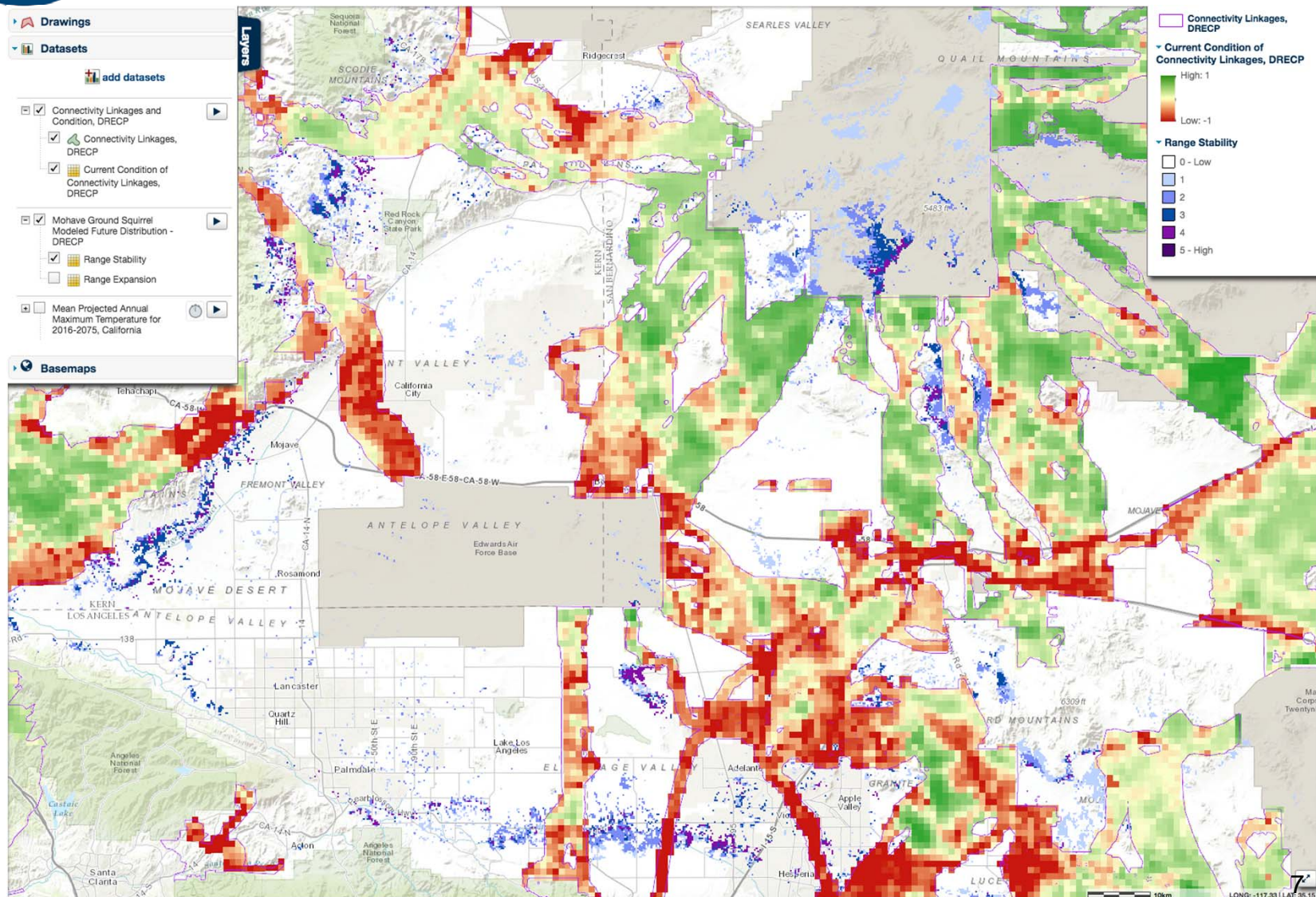


CALIFORNIA ENERGY COMMISSION





CALIFORNIA ENERGY COMMISSION

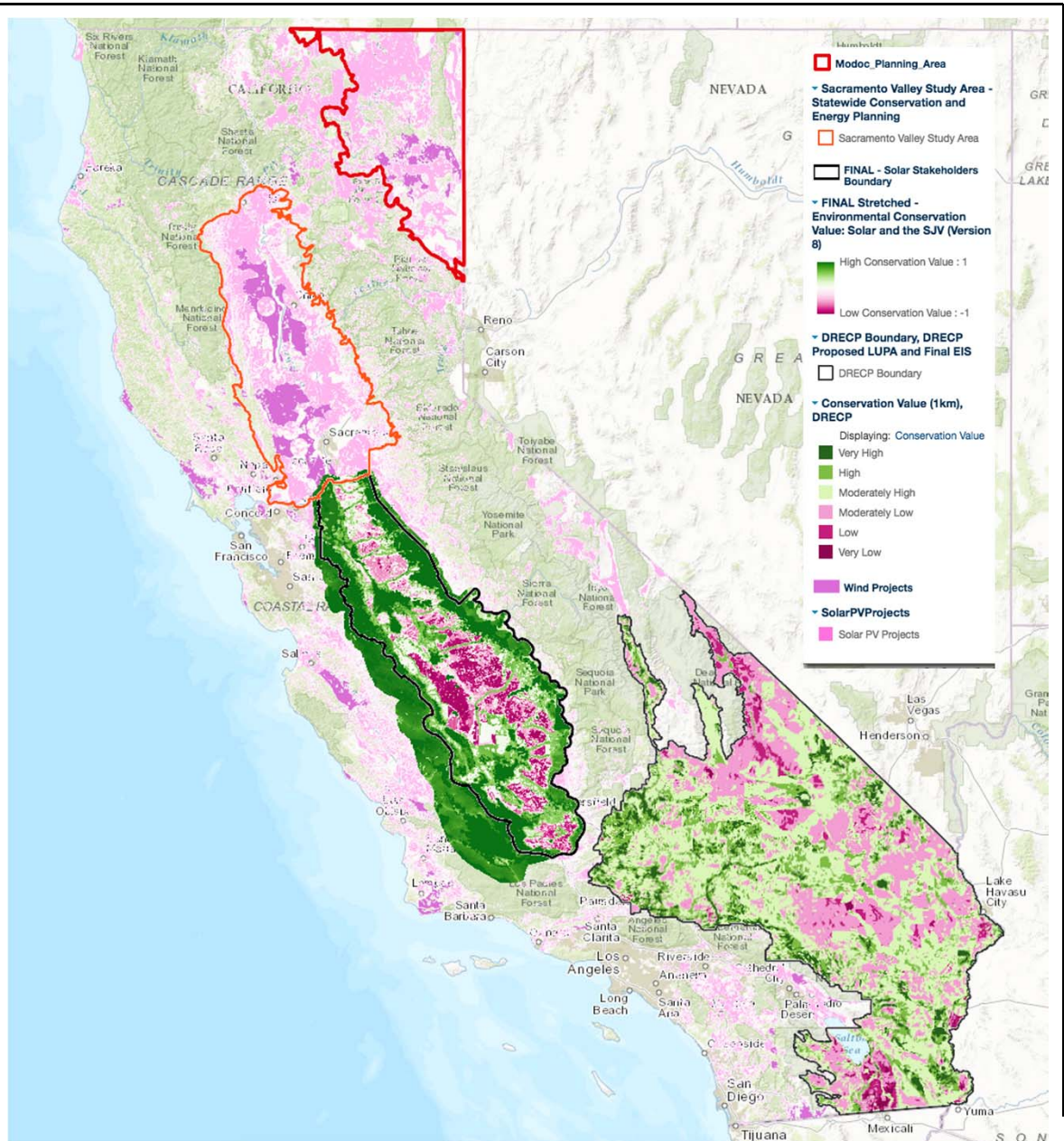




CALIFORNIA ENERGY COMMISSION

Statewide Energy Planning

- Focused on Areas with Renewable Energy Resources
- Evaluate with a Consistent set of Data Elements





CALIFORNIA ENERGY COMMISSION

CALIFORNIA CLIMATE CONSOLE

<http://climateconsole.org/ca>

For more information:

Scott Flint
California Energy Commission

Scott.Flint@energy.ca.gov

Jim Stritthold
Conservation Biology Institute

stritt@consbio.org

