

## DOCKETED

<b>Docket Number:</b>	17-IEPR-13
<b>Project Title:</b>	Strategic Transmission Investment Plan
<b>TN #:</b>	217686
<b>Document Title:</b>	Exploring the Land and Water Resources Intersection in California's San Joaquin Valley
<b>Description:</b>	Presentation by Ed Thompson with American Farmland Trust
<b>Filer:</b>	Stephanie Bailey
<b>Organization:</b>	California Energy Commission
<b>Submitter Role:</b>	Commission Staff
<b>Submission Date:</b>	5/22/2017 2:30:29 PM
<b>Docketed Date:</b>	5/22/2017

# Exploring the Land & Water Resources Intersection in California's San Joaquin Valley



A Research Report of the  
HELEN K. CAHILL CENTER FOR  
FARMLAND CONSERVATION POLICY INNOVATION

## Land Quality Index

FMMP classification  
Storie Index  
Citrus microclimate  
Aquifer recharge capacity

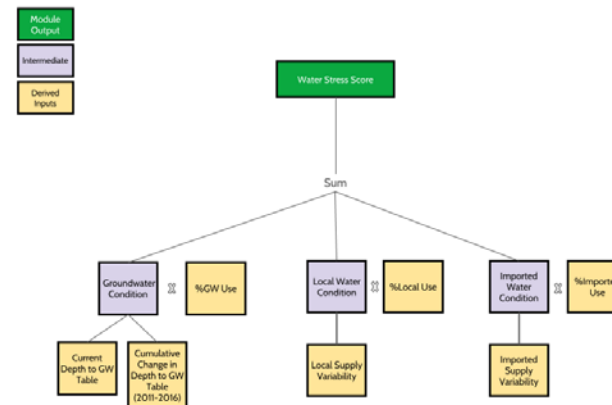
Saline/sodic soils  
High water table  
Recent fallowing

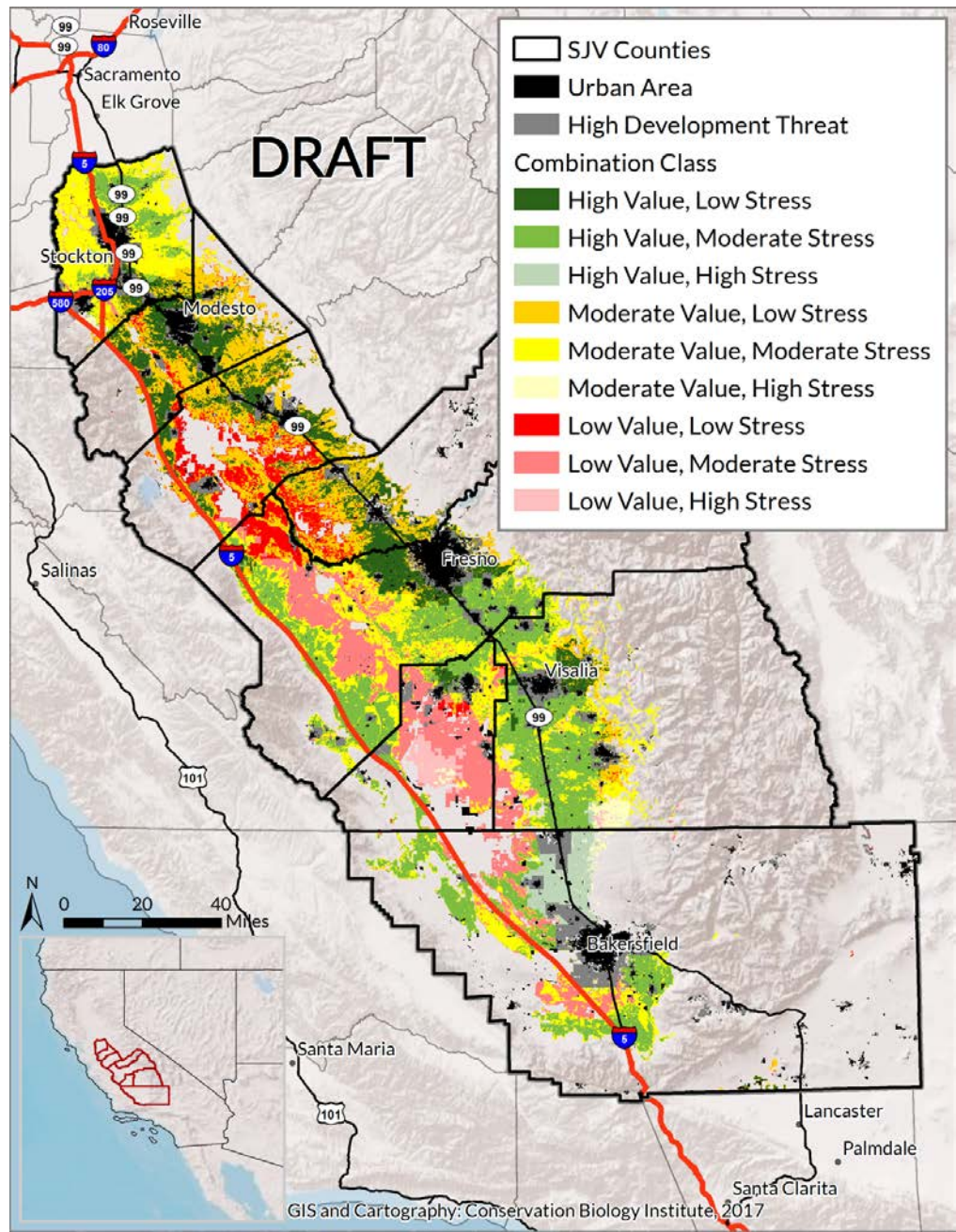
Crop values (verification)

## Water Stress Index

Local surface water  
Imported surface water  
Groundwater

Reliance (percentage of total use)  
Reliability (variability)





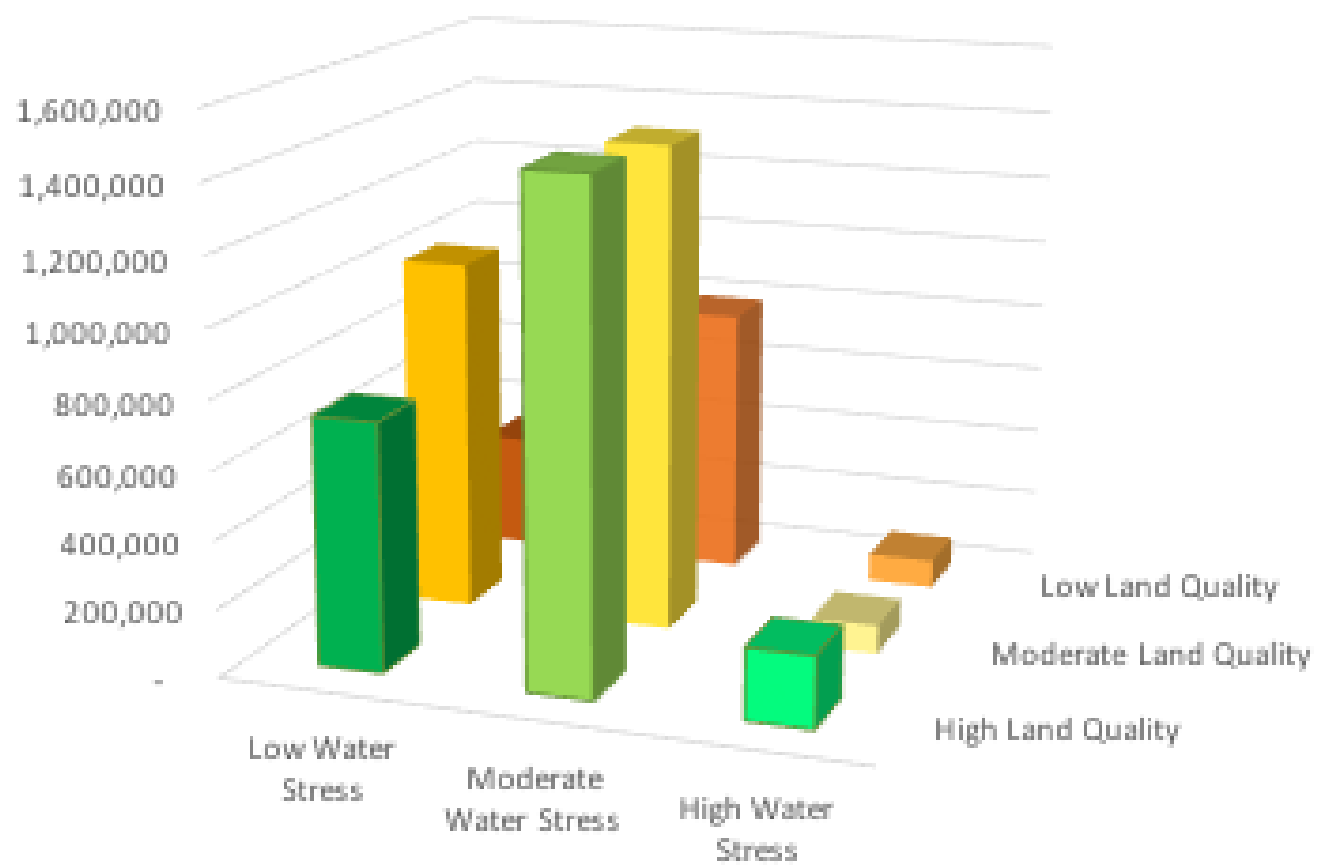
## Scenarios

- SGMA implementation
- DWR tributaries proposal
- Climate change
- Development



A Research Report of the  
 HELEN K. CAHILL CENTER FOR  
 FARMLAND CONSERVATION POLICY INNOVATION

## Agricultural Land Quality & Water Stress Levels in the San Joaquin Valley



Development Risk	Land Quality of Low Water Stress Acreage			All Low Water Stress Acreage
	High	Moderate	Low	
High	81,189	88,257	18,155	187,601
Moderate	50,135	27,518	2,493	80,146
Low	596,169	919,145	315,855	1,831,169
Total	727,493	1,034,920	336,503	2,098,916
High & Mod Pct	18.1%	11.2%	6.1%	12.8%

