


DOCKETED

Docket Number:	17-IEPR-13
Project Title:	Strategic Transmission Investment Plan
TN #:	217683
Document Title:	Using Databasin GIS Portals as a Spatial Collaborative Energy Planning Tool
Description:	Presentation by Garry George with Audubon California
Filer:	Stephanie Bailey
Organization:	Audubon California
Submitter Role:	Public
Submission Date:	5/22/2017 2:30:29 PM
Docketed Date:	5/22/2017

Using Databasin GIS portals as a Spatial collaborative energy planning tool

**DESERT RENEWABLE ENERGY
CONSERVATION PLAN GATEWAY**
MAIN DRECP SITE

Search by keyword or location


powered by DATA BASIN


Get StartedExploreCreateMy Workspace

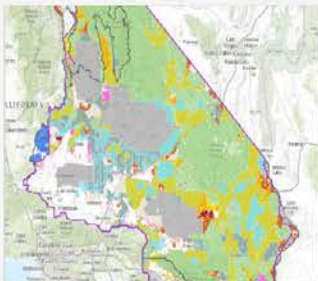
What is the DRECP gateway?





How is the gateway organized?



How do I get a copy of the BLM Proposed LUPA and FEIS?








Desert Renewable Energy Conservation Plan: BLM Proposed Land Use Plan Amendment and Final Environmental Impact Statement


BLM Proposed LUPA and FEIS

Figure II.3-1, DRECP Proposed LUPA and Final EIS, Integrated Preferred Alternative

Models

Terrestrial Intactness
▶ Introduction Video

Conservation Values
▶ Introduction Video

Climate Site Sensitivity
▶ Introduction Video

Species Stack
▶ Introduction Video

Applications

Climate Console
▶ Introduction Video

Site Survey Analyst
▶ Introduction Video


Figure II.4-1, DRECP Proposed LUPA and Final EIS, Integrated Alternative 1

Figure II.5-1, DRECP Proposed LUPA and Final EIS, Integrated Alternative 2

Figure II.6-1, DRECP Proposed LUPA and Final EIS, Integrated Alternative 3

Figure II.7-1, DRECP Proposed LUPA and Final EIS, Integrated Alternative 4

 Number of Visitors to the DRECP Gateway: 2,759

CEC
5/24/2017

A PATH FORWARD

Identifying Least-Conflict
Solar PV Development
in California's San
Joaquin Valley

MAY 2016

BerkeleyLaw
UNIVERSITY OF CALIFORNIA

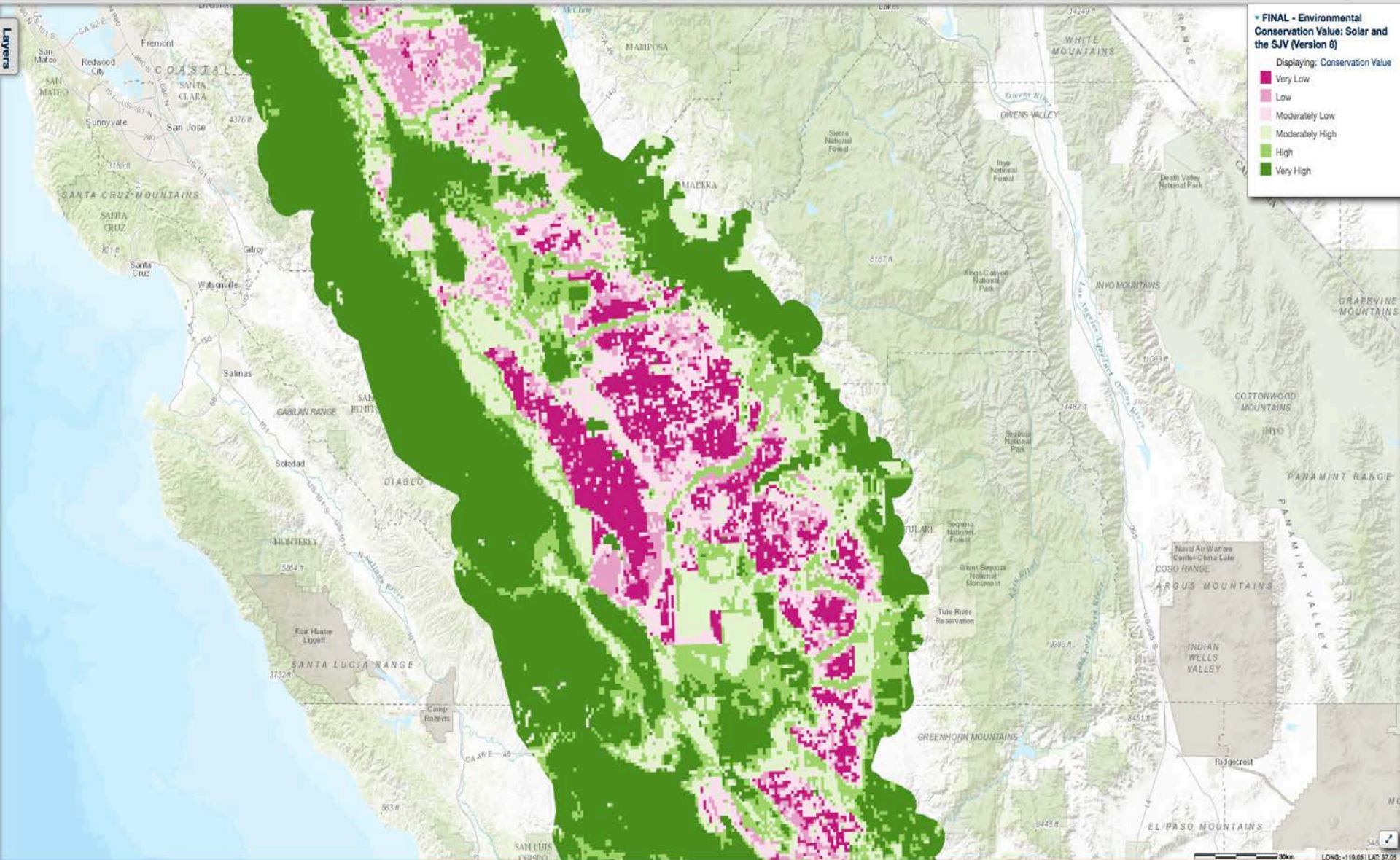
Center for Law, Energy &
the Environment

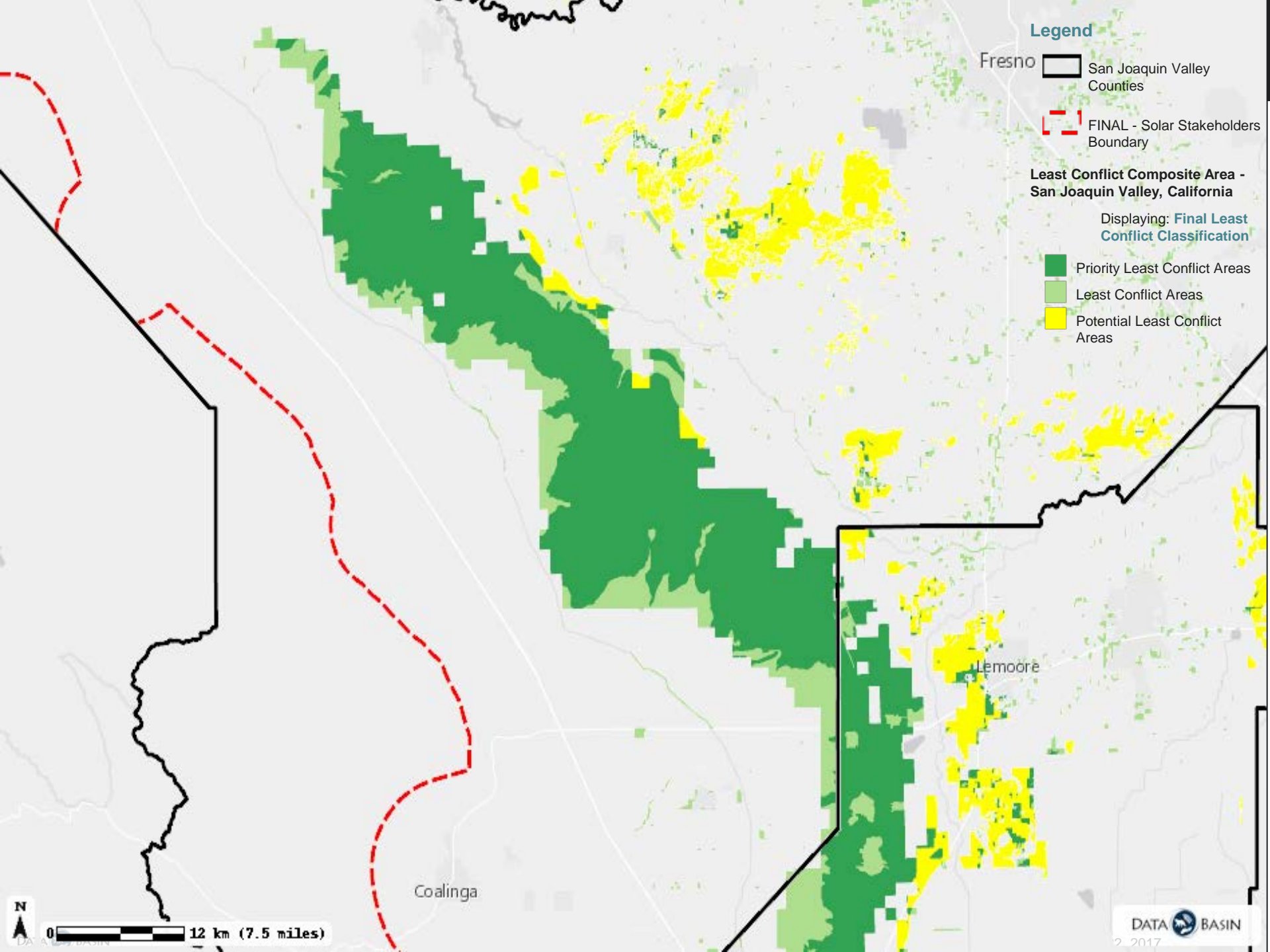


▼ FINAL - Environmental Conservation Value: Solar and the SJV (Version 8)

Displaying: Conservation Value

- Very Low
- Low
- Moderately Low
- Moderately High
- High
- Very High





Legend

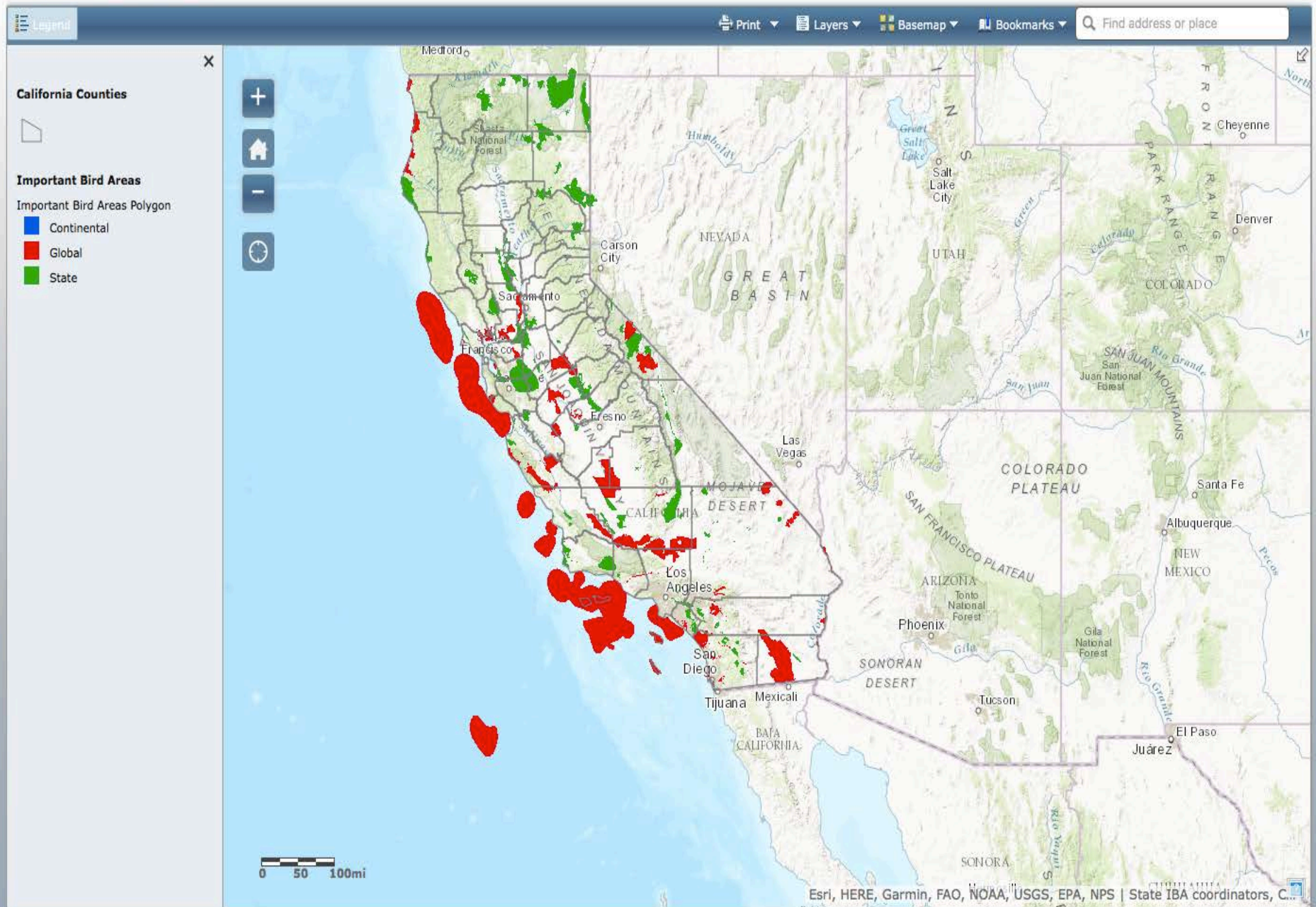
- Fresno
- San Joaquin Valley Counties
 - FINAL - Solar Stakeholders Boundary

Least Conflict Composite Area - San Joaquin Valley, California

Displaying: **Final Least Conflict Classification**

- Priority Least Conflict Areas
- Least Conflict Areas
- Potential Least Conflict Areas

California IBAs



Audubon's Birds and Climate Change Report

314 Species on the Brink

Shrinking and shifting ranges could imperil nearly half of U.S. birds within this century



Burrowing Owl

By 2080, this diurnal owl species could lose 77 percent of its breeding range.

[See the climate forecast map »](#)

Approximate Current Range



Winter



Summer



Winter Range



Summer Range



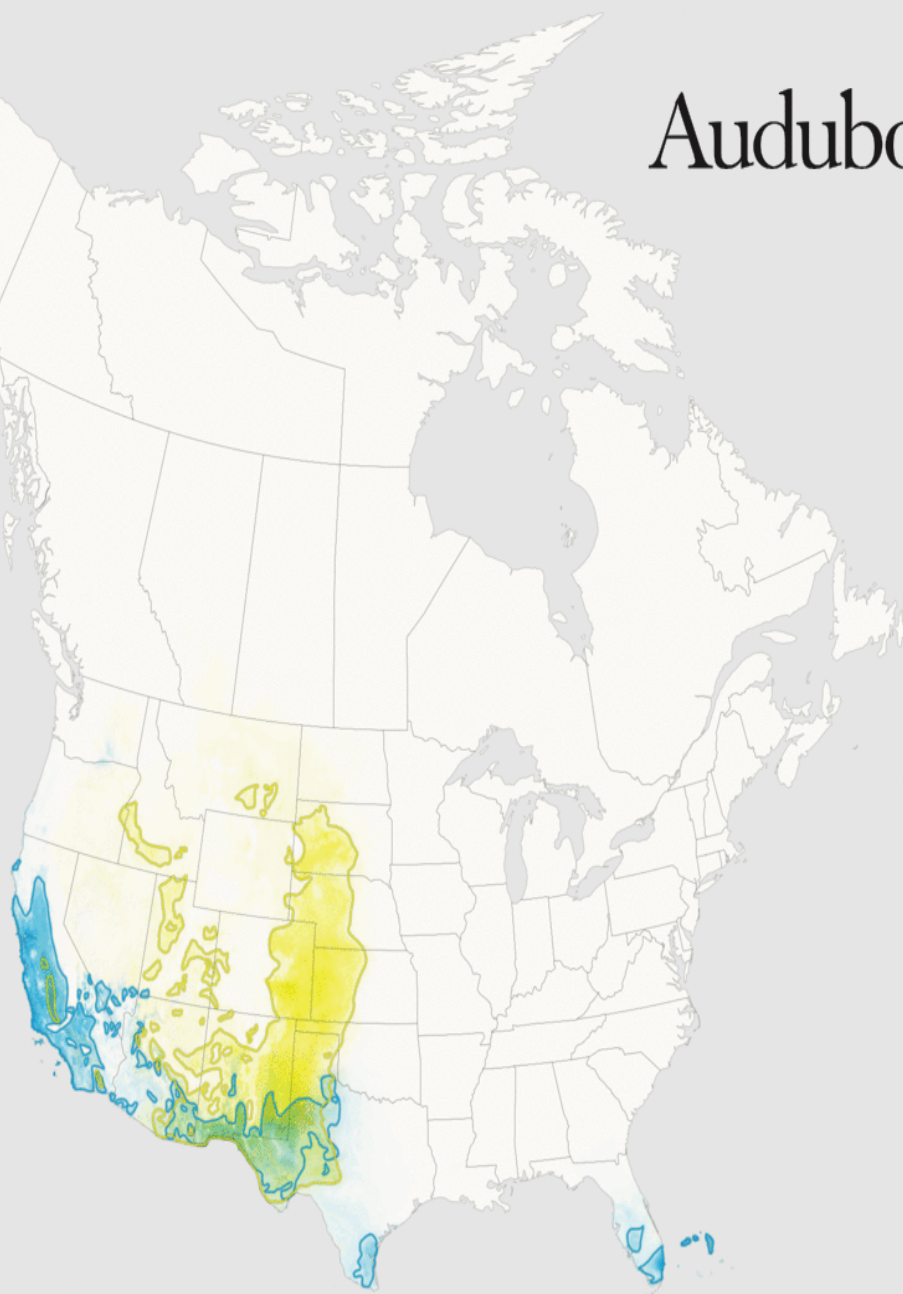
Both Seasons

Year

2000 2020 2050 2080

Burrowing Owl

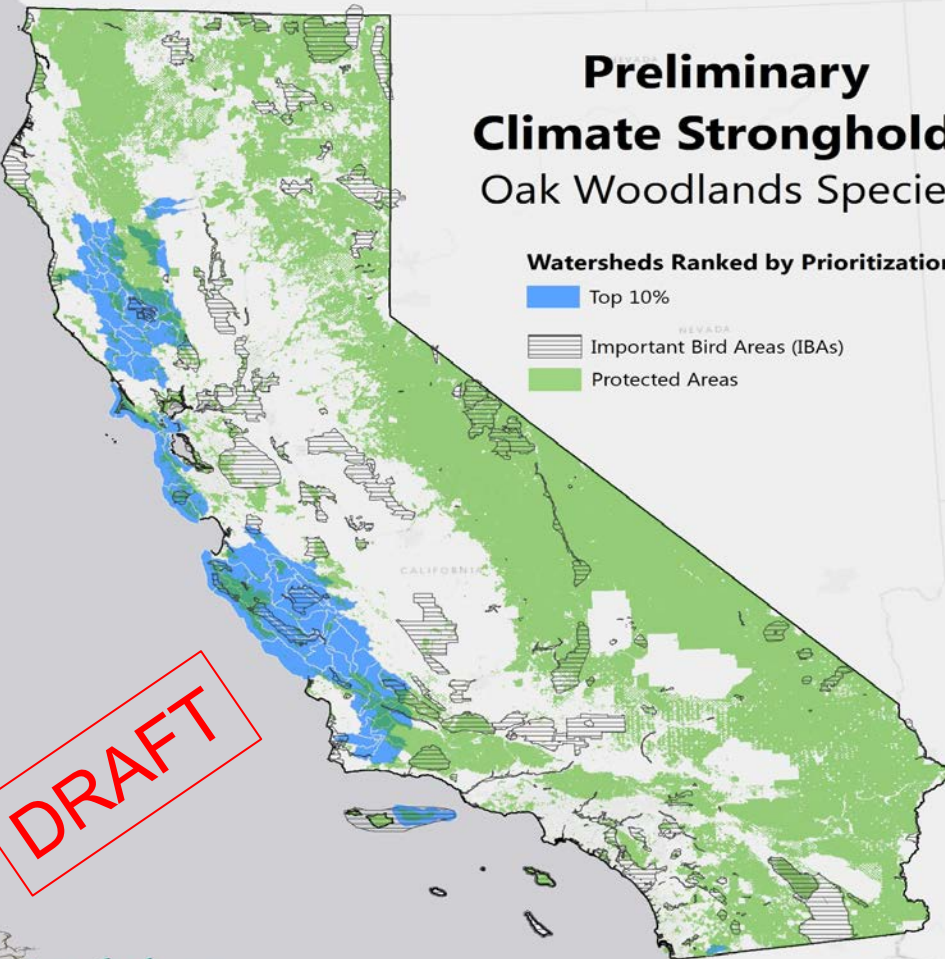
Athene cunicularia



Preliminary Climate Strongholds Oak Woodlands Species

Watersheds Ranked by Prioritization

- Top 10%
- Important Bird Areas (IBAs)
- Protected Areas



DRAFT

Multi-species
prioritization

8 oak woodland birds

Get Started

Explore

Create

Community

My Workspace

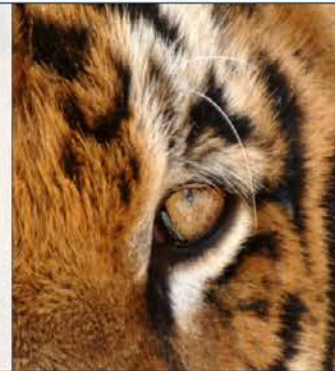
What is Data Basin?

What can I do?

Who is using Data Basin?

How do I start exploring?

Data Basin is a science-based mapping and analysis platform that supports learning, research, and sustainable environmental stewardship.



Get started quickly with Data Basin

[Take a Tour](#)

Explore Data Basin Guides & Case Studies...

**Building a Network of Grassland Landscapes in the Midwest: Change Strategies for the Future of Grassland Birds**

The Midwest Grasslands Network recognizes that successful grassland conservation needs to take effect at larger scales and in permanent ways in order to halt the long-term declines of grassland bird populations. In 2015 ...

[read more](#)

Explore Data Basin Mapping Tools

With the Data Basin full-screen mapping tools, you can:

- View and analyze geospatial conservation data
- Collaborate with colleagues using sharing and commenting tools
- Generate custom analyses and summary reports of your data
- And much more...

How to Create a Map



Gateways are unique spaces for finding curated spatial data. They build upon the existing Data Basin framework and are customized to meet the needs of a target audience. Customizations can include custom mapping and analysis tools.

[See All Gateways](#)

Upcoming Events

[see more](#)

The ~~Additional~~ funding for Data Basin is provided by the Kresge Foundation.

[ABOUT](#)[TERMS OF USE](#)[SUPPORT SERVICES](#)[CONTACT US](#)[DONATE](#)

Follow Data Basin:



© 2017 Conservation Biology Institute

Garry George
Renewable Energy
Director
AUDUBON
CALIFORNIA

ggeorge@audubon.org