

DOCKETED

Docket Number:	17-IEPR-13
Project Title:	Strategic Transmission Investment Plan
TN #:	217682
Document Title:	Policy Perspectives- Using Interactive Data Platforms to Support Collaborative Planning
Description:	Presentation and panel discussion moderated by Scott Flint
Filer:	Stephanie Bailey
Organization:	California Energy Commission
Submitter Role:	Commission Staff
Submission Date:	5/22/2017 2:30:29 PM
Docketed Date:	5/22/2017



Panel Discussion: Policy Perspectives - Using Interactive Data Platforms to Support Collaborative Planning

Scott Flint

California Energy Commission
IEPR Workshop
Art Rosenfeld Hearing Room
Sacramento, California

May 24, 2017



Landscape-Scale Energy Planning Processes

- Renewable Energy Transmission Initiative (RETI)
- Desert Renewable Energy Conservation Plan (DRECP)
- San Joaquin Valley Least Conflict Lands for Solar PV
- RETI 2.0
- California Offshore Wind Energy



Science-Based Planning

Use of high-quality science results in –

- Policy implementation in a fully informed manner
- Effective and efficient planning
- Empowered decision making for:
 - ✓ Natural resource conservation and management
 - ✓ Smart development for sustainable communities and economies



RETI 2.0 Environmental and Land Use Technical Group

Report Recommendations and Next Steps:

- Assemble accurate and representative datasets, keep them available online for use by the agencies, stakeholders, and the public.
- Periodically update and work to fill data gaps to provide a basic set of information that can be used as an input to agency planning and regulatory processes.
- Agencies and stakeholders should work together to complete the Environmental Report Writer that uses the data in landscape-scale planning processes so that the data and information could be easily used in planning and decision making.



2016 Integrated Energy Policy Report Update

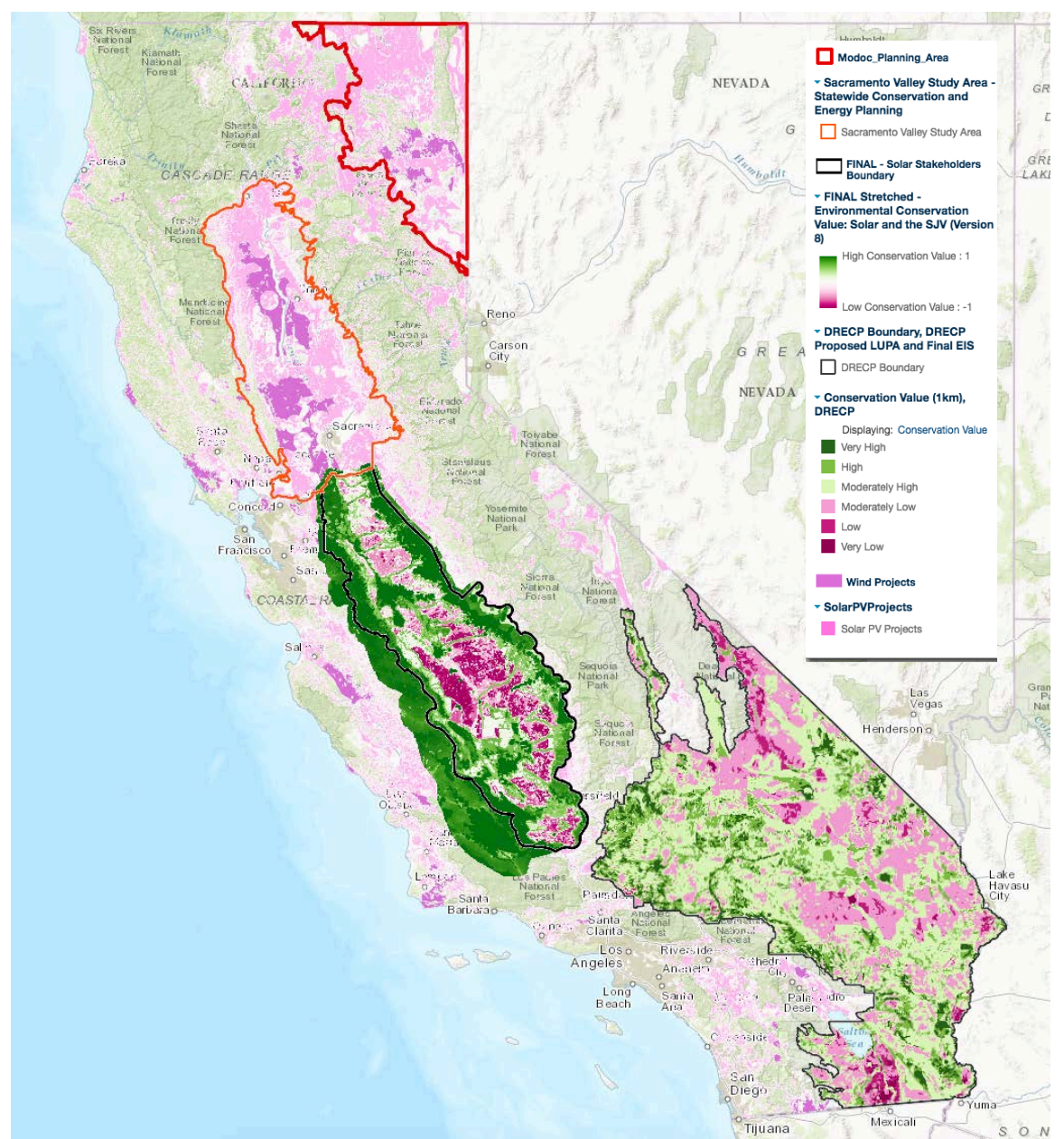
Recommendations for Statewide Energy Planning and Permit Coordination:

- Continue to apply proactive tools and approaches like landscape-scale planning, to help meet renewable energy and GHG reduction goals.
- Integrate information gathered and produced from energy planning efforts, including DRECP, San Joaquin Valley Identification of Least Conflict Lands, and the Renewable Energy Transmission Initiative (RETI) to inform energy planning.
- Expedite permitting of the highest priority transmission projects.



Statewide Energy Planning

- Focused on Areas with Renewable Energy Resources
- Evaluate with a Consistent set of Data Elements





CALIFORNIA ENERGY COMMISSION

Available Soon on
Data Basin

Access to:

- Project Gateways
- Logic Models
- Applications

Gateways



CALIFORNIA STATEWIDE ENERGY GATEWAY

powered by DATA BASIN

Get Started

Explore

Create

My Workspace

About the California Statewide Energy Gateway

This gateway brings together energy planning related information and applications across California, and serves as a launchpad for accessing additional gateways and applications for specific planning processes.

California Statewide Energy Planning

ENERGY RELATED GATEWAYS



Desert Renewable Energy Conservation Plan Gateway

The DRECP Gateway was created to support final development of the Desert Renewable Energy Conservation Plan. It will be used to engage and inform all interested parties about ongoing planning and management issues in the California desert.



Renewable Energy Transmission 2.0 Gateway

The Renewable Energy Transmission Initiative (RETI) 2.0 Gateway supports the public process of identifying potential transmission that could access and integrate renewable energy with the most environmental, economic, and community benefits.



California Offshore Wind Energy

The Offshore Renewable Wind Energy Gateway assembles geospatial information on ocean wind resources, ecological and natural resources, ocean commercial and recreational uses and community values. This information will help identify areas off of California that are potentially suitable for wind energy generation.

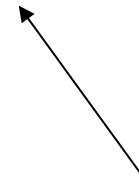
ENERGY RELATED APPLICATIONS



California Climate Console

The climate console is a web application designed for exploring climate change projections for a selected area of interest.

Other applications currently under development.



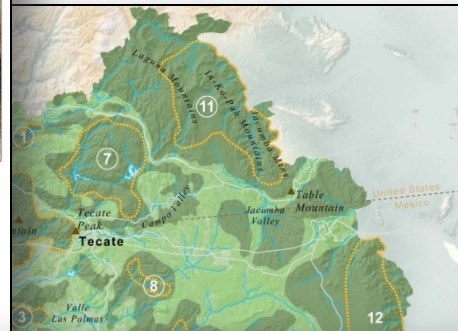
Applications





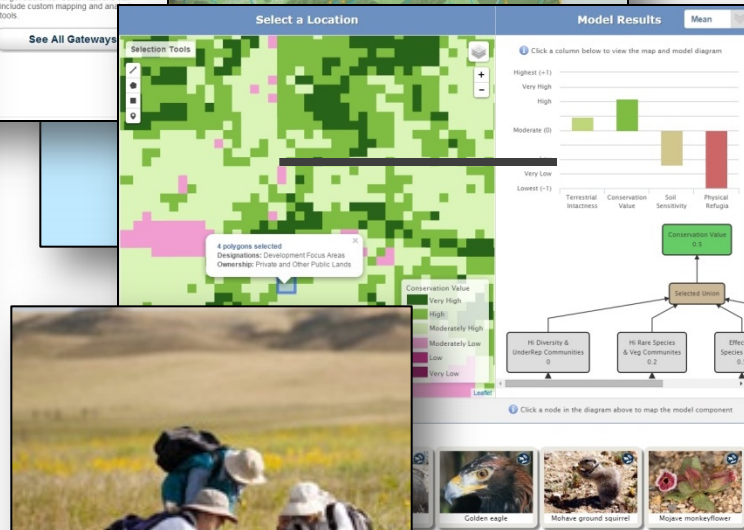
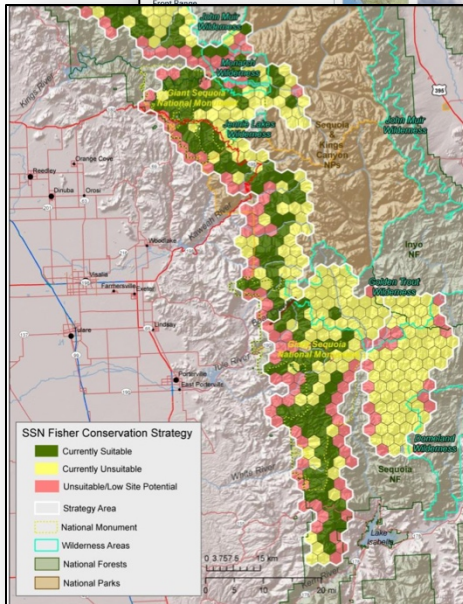
The Platform

Data Basin Services



Conservation Planning & Assessments

Ecological Models



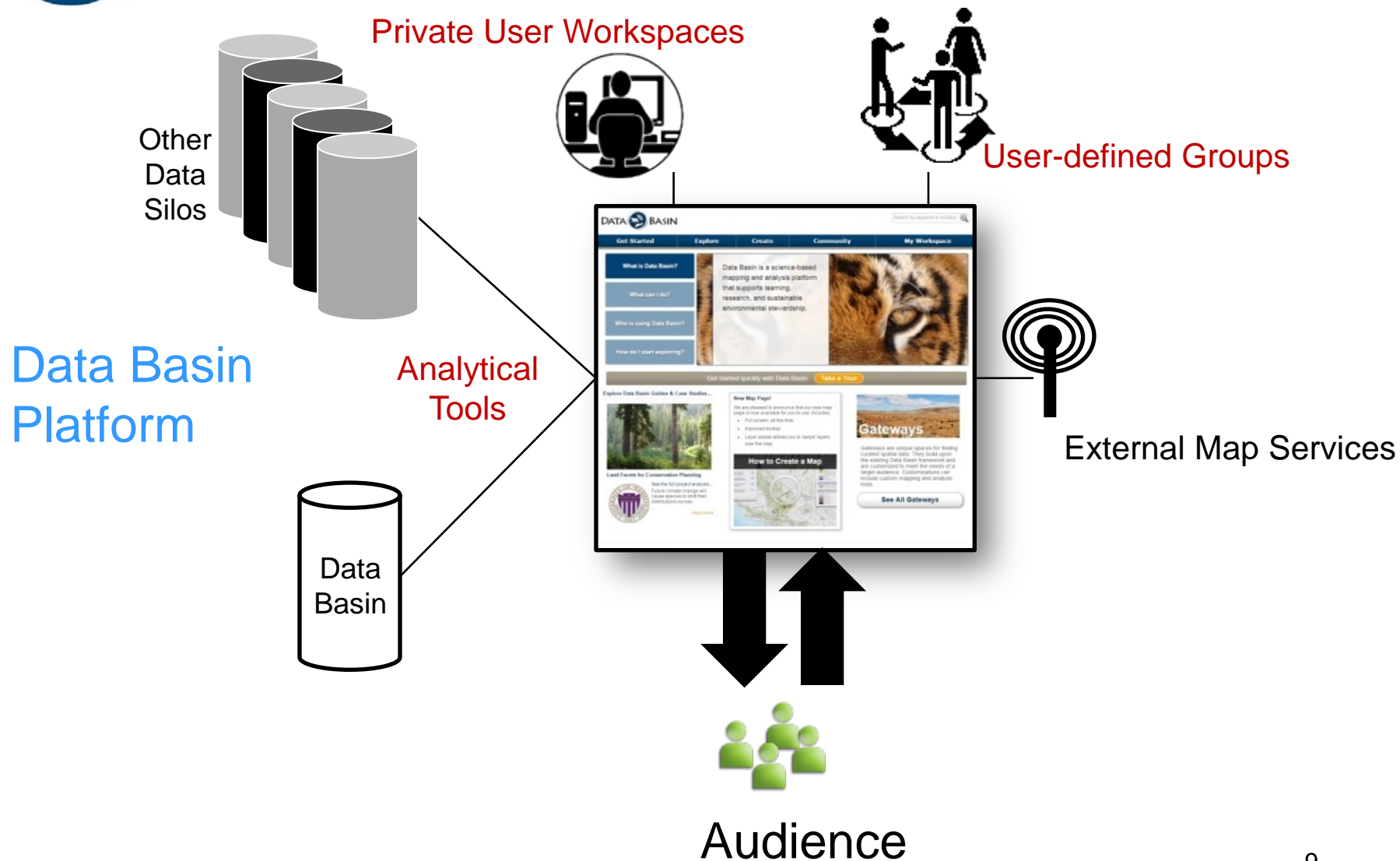
Science Interpretation Support Tools



Monitoring & Management



CALIFORNIA ENERGY COMMISSION





Questions for the Policy Panel

1. How do geospatial planning tools and access to quality data sets and information help promote renewable energy development and assist conservation and local planning efforts?
2. How should this information be used to best assist planning efforts and improve collaboration, stakeholder participation and the quality and transparency of decisions?
3. How can interactive data platforms be deployed and improved to best support a variety of planning efforts?