

## DOCKETED

<b>Docket Number:</b>	06-AFC-09C
<b>Project Title:</b>	Colusa Generating Station - Compliance
<b>TN #:</b>	217513
<b>Document Title:</b>	Notice of Determination Petition to Amend Colusa Generating Station
<b>Description:</b>	Notice of Determination
<b>Filer:</b>	Raquel Rodriguez
<b>Organization:</b>	California Energy Commission
<b>Submitter Role:</b>	Commission Staff
<b>Submission Date:</b>	5/9/2017 3:39:03 PM
<b>Docketed Date:</b>	5/9/2017

**CALIFORNIA ENERGY COMMISSION**

1516 NINTH STREET  
SACRAMENTO, CA 95814-5512  
www.energy.ca.gov



**NOTICE OF DETERMINATION  
PETITION TO AMEND  
COLUSA GENERATING STATION  
(06-AFC-09C)**

On December 22, 2016, DayZen, LLC, on behalf of Pacific Gas and Electric Company (PG&E), filed a petition to amend (amendment) with the California Energy Commission (Energy Commission) requesting modifications to the Colusa Generating Station (CGS). PG&E submitted a revision to this amendment on September 30, 2016.

CGS is a 660-megawatt, combined-cycle facility located in an unincorporated area of Colusa County, six miles north of the community of Maxwell. The project was certified by the Energy Commission on April 23, 2008, and was on line and producing power on December 22, 2010.

**DESCRIPTION OF PROPOSED MODIFICATIONS**

The amendment is seeking approval to modify the CGS by installing rotating intake screens to control algae blooms at the water intakes for the Tehama Colusa Canal (TCC), and associated equipment at the TCC pump. The TCC is owned by the U.S. Bureau of Reclamation and operated by the Tehama Colusa Canal Authority. The proposed project modification would eliminate the need for the routine manual cleanup of the large algae blooms that build up near the pump intake screens.

For additional information, the Energy Commission's webpage for this facility, <http://www.energy.ca.gov/sitingcases/colusa/index.html>, has a link to the current petition to amend (TN 215092) accessible through the webpage in the box labeled "Compliance Proceeding." Click on the "Documents for this Proceeding (Docket Log)" option.

**ENERGY COMMISSION STAFF REVIEW AND DETERMINATION**

Pursuant to section 1769(a)(2) of Title 20, California Code of Regulations, Energy Commission approval of a petition to amend at a noticed Business Meeting is not required "(w)here staff determines that there is no possibility that the modifications may have a significant effect on the environment, and if the modifications will not result in a change or deletion of a condition adopted by the commission in the final decision or make changes that would cause the project not to comply with any applicable laws, ordinances, regulations, or standards [LORS]...."

Staff has determined for this petition that formal approval by the Energy Commission is not required, and the proposed modifications meet the criteria for approval at the staff level because:

- The modifications will not have any significant effect on the environment;

COLUSA GENERATING STATION  
06-AFC-09C

- Existing conditions of certification are sufficient to cover the proposed modifications without changes to, or deletions of, any conditions of certification; and
- The project as modified will maintain full compliance with applicable LORS.

Staff’s conclusions for each technical or environmental area are summarized in the following table:

**SUMMARY OF STAFF RESPONSES TO PETITION**

TECHNICAL/ENVIRONMENTAL AREAS REVIEWED	STAFF RESPONSE			Revised Conditions of Certification Recommended
	Technical Area Not Affected	No Significant Environmental Impact or LORS Inconsistency*	Process As Amendment	
Air Quality	X			N/A
Biological Resources		X		N/A
Cultural Resources		X		N/A
Efficiency	X			N/A
Facility Design	X			N/A
Geological and Paleontological Resources		X		N/A
Hazardous Materials Management		X		N/A
Land Use	X			N/A
Noise and Vibration	X			N/A
Public Health		X		N/A
Reliability	X			N/A
Socioeconomics	X			N/A
Soil and Water Resources		X		N/A
Traffic and Transportation		X		N/A
Transmission Line Safety and Nuisance	X			N/A
Transmission System Engineering	X			N/A
Visual Resources		X		N/A
Waste Management	X			N/A
Worker Safety and Fire Protection		X		N/A

\*No formal Energy Commission approval is necessary where staff determines there is no possibility that the proposed modifications would have a significant effect on the environment, and the modifications would not result in a change in, or deletion of, a condition adopted by the Commission in the Final Decision, or make changes that would cause project noncompliance with any applicable laws, ordinances, regulations, or standards (Cal. Code Regs., tit. 20, § 1769 (a)(2)).

Energy Commission technical staff reviewed the petition for potential environmental effects and consistency with applicable LORS. Staff has determined that the technical or environmental areas of Air Quality, Efficiency, Facility Design, Land Use, Noise and Vibration, Reliability, Socioeconomics, Transmission Line Safety and Nuisance, Transmission System Engineering, and Waste Management are not affected by the proposed changes.

For the technical areas of Biological Resources, Cultural Resources, Geological and Paleontological Resources, Hazardous Materials Management, Public Health, Soil and Water Resources, Traffic and Transportation, Visual Resources, and Worker Safety and Fire Protection, staff has determined the project would continue to comply with

applicable LORS and no changes to any conditions of certification are necessary to ensure that no significant impacts occur. Therefore, staff is processing the request as a Staff Approved Project Modification. Staff notes the following for these technical areas:

**Biological Resources.** Proposed installation of rotating intake screens (to control algae blooms), and a downward facing light pole in the area of the intake pumps would not affect biological resources as long as all work complies with the existing conditions of certification in the final Commission decision (Decision). All work would occur on the canal access road. Work on the intake pumps and air compressor would also occur on a gravel surface (the canal access road) and no work would occur in the Tehama Colusa Canal. The TCC is part of the Central Valley Water Project and is concrete lined and bordered by gravel roads.

**Cultural Resources.** The proposed modifications of the CGS would not cause significant impacts on any known cultural resources. The proposed amendment would make minor alterations to an historical resource, the Tehama-Colusa Canal, and its immediate surroundings. These alterations would be minor in scope and would not constitute significant impacts on the TCC. Although the proposed modifications could result in impacts to as-yet-unidentified, buried cultural resources, implementation of the existing conditions of certification would reduce such impacts.

**Geological and Paleontological Resources.** Based on the information provided by the project owner and previous investigation by the staff, staff concludes the proposed modifications would have no significant impact on geologic resources, paleontologic resources, or impacts to public health and safety due to geologic hazards. The proposed construction would not require any change to the conditions of certification related to geologic or paleontologic resources adopted by the Energy Commission in its Decision (TN 46033). Staff also concludes that compliance with current geology LORS and conditions specified in the Decision would ensure mitigation of the effects of geologic hazards at the site.

**Hazardous Materials Management.** The construction and installation of the new water intake screens would not have a significant effect on power plant hazardous materials. During the installation and construction of the new water intake screens and appurtenances, several hazardous materials will be used onsite. Similar to equipment maintenance activities, these materials would include solvents, gasoline, lubricants, and welding gases which are already included in the annual compliance report under the existing **HAZ-1** condition. No extremely hazardous or regulated hazardous materials would be used on site specifically for any of the construction activities listed above. Therefore, with petitioner's continued compliance with existing conditions of certification, specifically **HAZ-1**, the proposed modifications would not have a significant effect on the environment and the CGS would continue to comply with all applicable LORS.

**Public Health.** Emissions during construction from trenching are negligible. Therefore, staff does not expect public health effects from construction or during operation.

**Soil and Water.** Staff concludes that the proposed amendment would not result in a significant impact on soil and water resources, as the mitigation for the original project would mitigate for this petition's potential impacts as well. The Drainage, Erosion, and Sediment Control Plan required in **SOIL&WATER-2** is sufficient as adopted in the Decision to provide mitigation for the proposed amendment. There would be no significant impacts to water supply or water quality, and the potential for flooding would not increase.

**Traffic and Transportation.** There would be an average of seven people on site for the duration of the project modification. Construction equipment would comprise two concrete delivery trucks and four delivery trucks for rental equipment (two each for delivery and pickup) on the site at any one time. Construction activities associated with the rotating intake screens are anticipated to be completed within 30 days. Traffic and transportation impacts are expected to be less than significant with continued implementation of Conditions of Certification **TRANS-1**, **TRANS-2**, and **TRANS-3** as set forth in the Decision.

**Visual Resources.** The installation of project components for the rotating intake screen modifications would not change the existing visual appearance of the project's contrast in the landscape. Visual resource impacts would remain less than significant with continued implementation of Condition of Certification **VIS-2** set forth in the Decision.

**Worker Safety and Fire Protection.** The construction and installation of the new water intake screens would not have a significant effect on power plant worker safety or fire protection.

### **Environmental Justice (EJ)**

The **Environmental Justice Population Figure** (attached) shows 2010 census blocks in the six-mile radius of the CGS with a minority population greater than or equal to 50 percent. The population in these census blocks represents an EJ population based on race and ethnicity as defined in the United States Environmental Protection Agency's *Guidance on Considering Environmental Justice During the Development of Regulatory Actions*.

Based on California Department of Education data in the **Environmental Justice Population Table** below, staff concludes that the percentage of those living in the two school districts in a six-mile radius of the project site and enrolled in the free or reduced price meal program are comparatively fewer than those in the reference geographies, and thus are not considered an EJ population based on low income as defined in the United States Environmental Protection Agency's *Guidance on Considering Environmental Justice During the Development of Regulatory Actions*.

**Environmental Justice Population Table-  
Low Income Data within the Project Area**

SCHOOL DISTRICTS IN SIX-MILE RADIUS	Enrollment Used for Meals	Free or Reduced Price Meals	
Maxwell Unified School District	329	55	16.7%
REFERENCE GEOGRAPHY			
Colusa County	4,630	3,153	68.1%
Willows Unified School District	1,435	930	64.8%
REFERENCE GEOGRAPHY			
Glenn County	5,629	3,771	67.0%

**Source:** CDE 2016. California Department of Education, DataQuest, Free or Reduced Price Meals, Selected District level data for the year 2014-2015, <<http://dq.cde.ca.gov/dataquest/>>.

Staff has determined that the impacts of the proposed modifications would be less than significant or less than significant with implementation of existing conditions of certification. Therefore, impacts would be less than significant for any population in the project's six-mile radius, including the EJ population represented in the **Environmental Justice Population Figure**.

This Notice of Determination has been mailed to the Energy Commission's facility mail list of interested parties and property owners adjacent to the facility site.

It has also been emailed to the facility listserv. The listserv is an automated Energy Commission email system by which information about this facility is emailed to parties who have subscribed. To subscribe, go to the Energy Commission's webpage for this facility, cited above, scroll down the right side of the project's webpage to the box labeled "Subscribe," and provide the requested contact information.

Any person may file an objection to staff's determination within 14 days of the date of this notice on the grounds that the project modification does not meet the criteria set forth in section 1769(a)(2). Absent any relevant objections, this petition to amend will be approved 14 days after this notice is docketed. To use the Energy Commission's electronic commenting feature to object to staff's determination, go to the Energy Commission's webpage for this facility, cited above, click on the "Submit e-Comment" link, and follow the instructions in the on-line form. Be sure to include the facility name in your comments. Once submitted, the Energy Commission's Dockets Unit reviews and approves your comments before they are posted. Once they are posted, you will receive an email with a link to them.

Written comments may also be mailed or hand-delivered to:

California Energy Commission  
Dockets Unit, MS-4  
Docket No. 06-AFC-09C  
1516 Ninth Street  
Sacramento, CA 95814-5512

COLUSA GENERATING STATION  
06-AFC-09C

All comments and materials filed with and approved by the Dockets Unit will be added to the facility Docket Log and be publicly accessible on the Energy Commission's webpage for the facility.

If you have questions about this notice, please contact Keith Winstead, Project Manager, at (916) 654-5191, or by fax to (916) 654-3882, or via e-mail at [keith.winstead@energy.ca.gov](mailto:keith.winstead@energy.ca.gov).

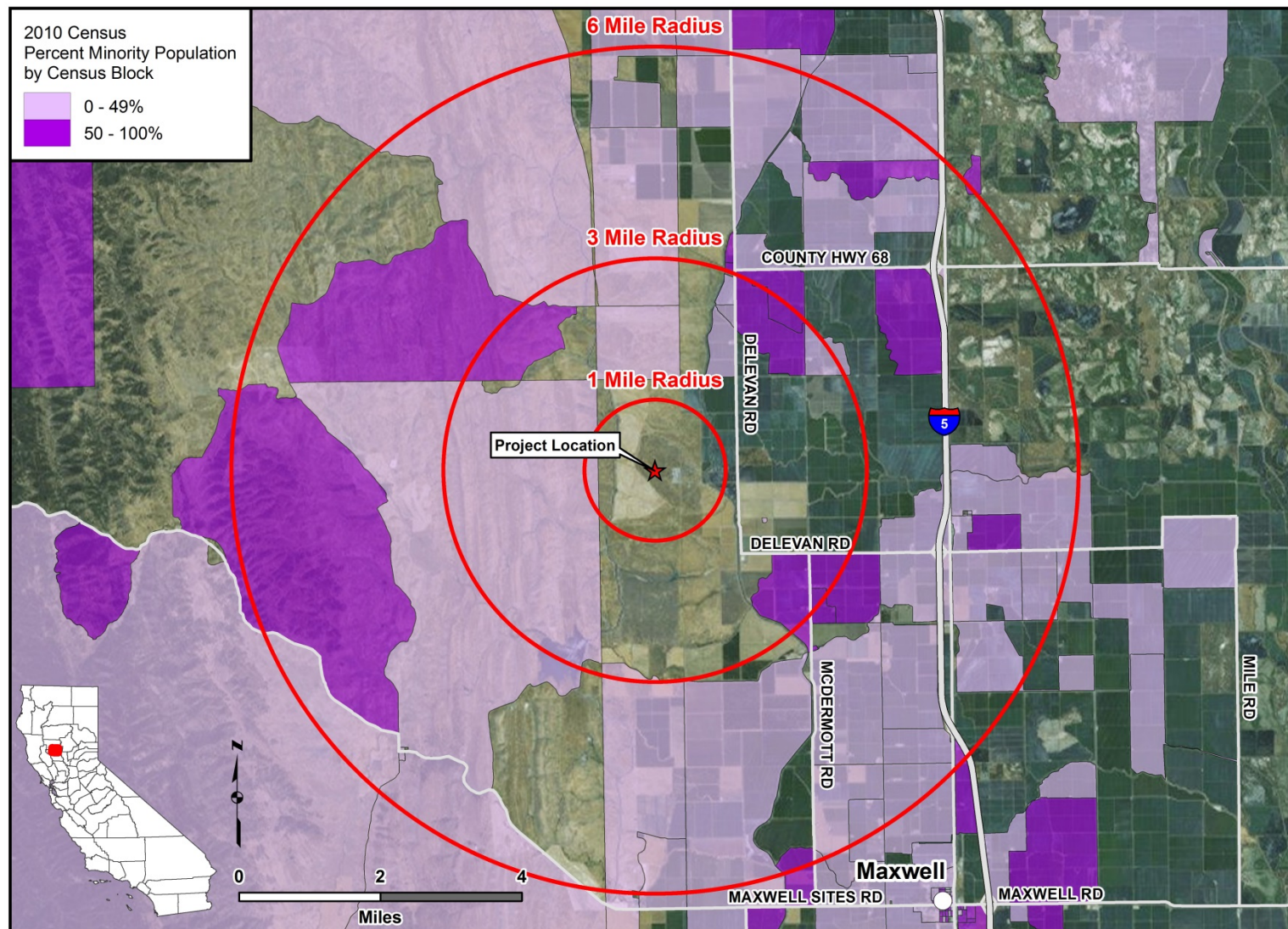
For information on participating in the Energy Commission's review of the petition, please call the Public Adviser at (800) 822-6228 (toll-free in California) or send your email to [publicadviser@energy.ca.gov](mailto:publicadviser@energy.ca.gov). News media inquiries should be directed to the Energy Commission Media Office at (916) 654-4989, or by e-mail to [mediaoffice@energy.ca.gov](mailto:mediaoffice@energy.ca.gov).

Date \_\_\_\_\_

\_\_\_\_\_  
**Chris Davis**  
Siting Office Manager  
Siting, Transmission & Environmental Protection  
Division

CC: Colusa Mail list 7172  
Colusa listserv

**ENVIRONMENTAL JUSTICE POPULATION FIGURE**  
Colusa Generating Station - Environmental Justice Population Figure



CALIFORNIA ENERGY COMMISSION - SITING, TRANSMISSION AND ENVIRONMENTAL PROTECTION DIVISION  
SOURCE: Census 2010 PL 94-171 Data