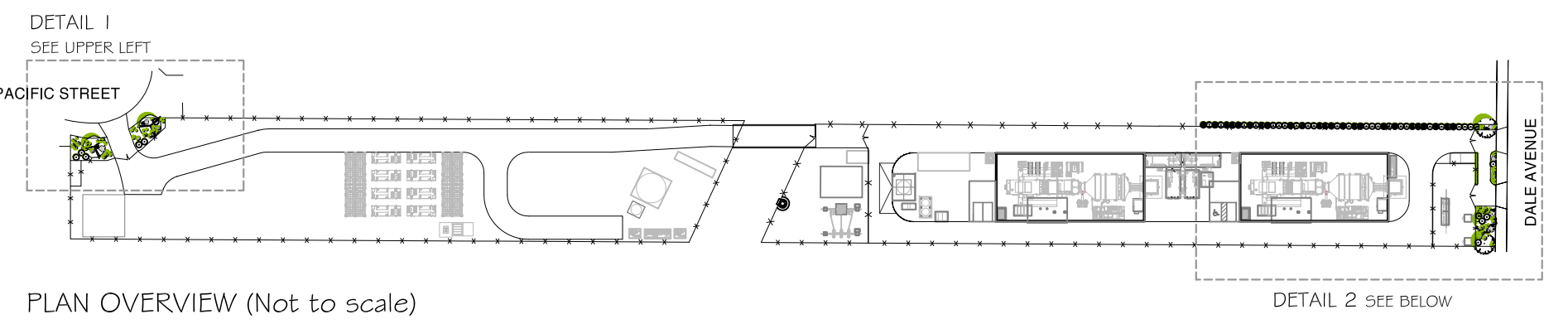
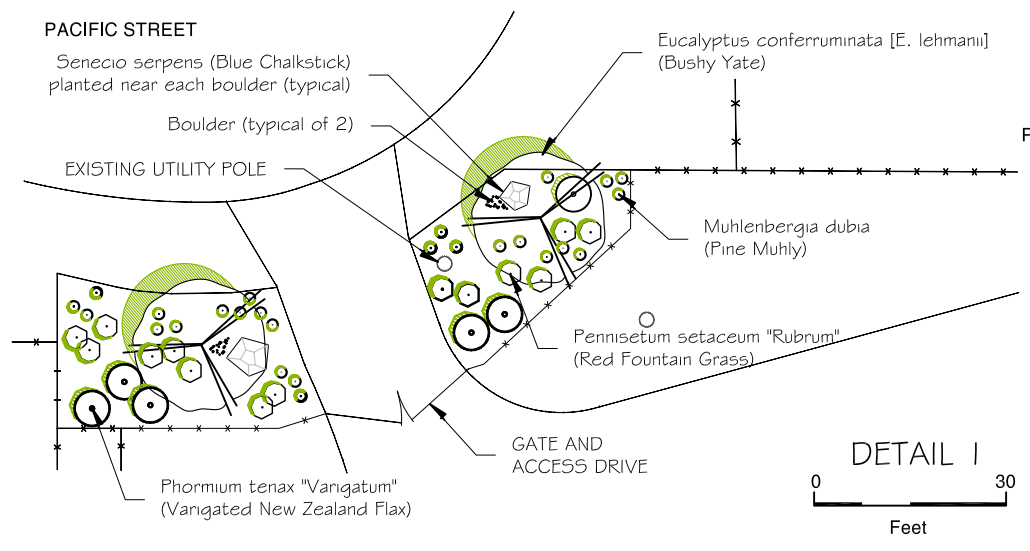


DOCKETED

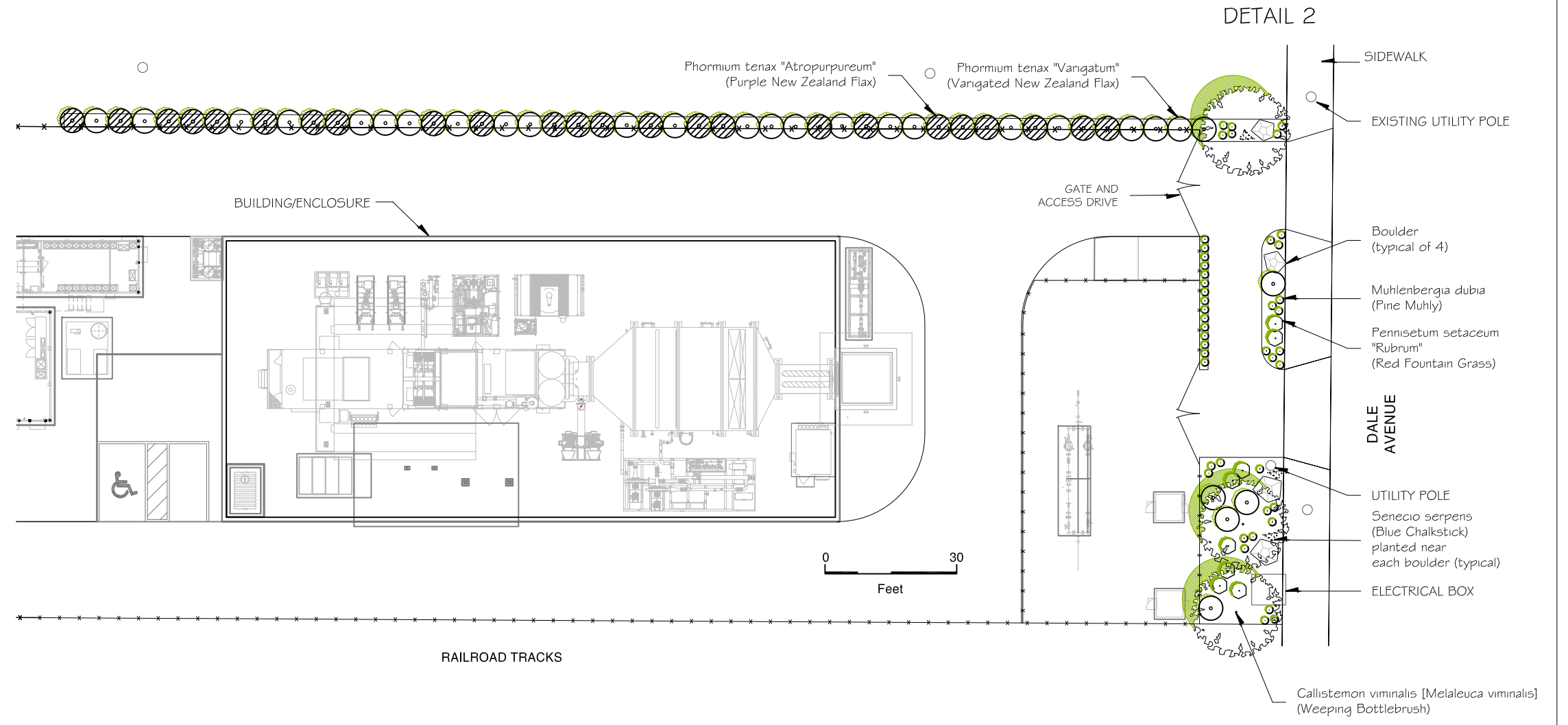
Docket Number:	16-AFC-01
Project Title:	Stanton Energy Reliability Center
TN #:	214207-35
Document Title:	Appendix 5.13B - Landscape Plan
Description:	Application for Certification Vol. 2
Filer:	Sabrina Savala
Organization:	Stanton Energy Reliability Center, LLC
Submitter Role:	Applicant
Submission Date:	10/27/2016 10:23:29 AM
Docketed Date:	10/26/2016

Appendix 5.13B
Landscape Plan



PLANT PALETTE LEGEND

SYMBOL	TYPE AND SPECIES
	EVERGREEN CANOPY TREE - Dale Avenue Callistemon viminalis [Melaleuca viminalis] (Weeping Bottlebrush) or Enobotrya deflexa (Bronze Loquat)
	EVERGREEN CANOPY TREE - Pacific Street Eucalyptus conferruminata [E. lehmannii] (Bushy Yate) or Photinia x fraseri (Fraser Photinia)
	MEDIUM HEIGHT EVERGREEN SHRUB Phormium tenax "Atropurpureum" (Purple New Zealand Flax)
	Phormium tenax "Vangatum" (Variegated New Zealand Flax)
	ORNAMENTAL GRASSES Pennisetum setaceum "Rubrum" (Red Fountain Grass)
	Muhlenbergia dubia (Pine Muhly)
	SUCCULENT GROUNDCOVER Senecio serpens (Blue Chalksticks)



LANDSCAPE CONCEPT

The landscape concept for the Stanton Energy Reliability Center incorporates a combination of evergreen trees, medium size shrubs, and ornamental grasses. The landscape plan calls for medium-height evergreen canopy trees along the Dale Avenue and Pacific Street frontages, within the area located between the sidewalk and the perimeter fence. Within this landscaped area, there will also be a limited number of shrubs, clustered informally with small and medium height ornamental grasses. To add visual interest, boulders accented by succulent groundcover will also be placed in the landscaped areas. In addition, a row of distinctive, medium height evergreen shrubs will be planted along the northern edge of the site, near Dale Avenue. The landscaping will enhance the site's appearance and partially screen new fencing and structures.

The suggested plant palette includes drought tolerant species that are appropriate to the regional setting and local site conditions.

NOTES:

1. Landscape layout is preliminary and subject to change based on final engineering and other factors.
2. A drip irrigation system will be installed to provide regular watering of new landscaping.
3. Decomposed granite to a depth of 3 to 4 inches will be applied within the planting strip for water conservation and weed suppression.
4. All planting shall meet SERC safety, operations, and maintenance requirements, including clearance requirements for underground and overhead conductors.
5. All landscaping and irrigation shall conform to applicable landscape related City and Regional Standards.



Eriobotrya deflexa (Bronze Loquat)
Photo source: California Polytechnic State University / Selectree 2016

EVERGREEN CANOPY TREE - Dale Street



Callistemon viminalis [Melaleuca viminalis]
Photo source: Treenames.net / Sheridan Landscaping LLC. 2016

EVERGREEN CANOPY TREE - Pacific Street



Eucalyptus conferruminata [E. lehmannii] (Bushy Yate)
Photo source: California Polytechnic State University / Selectree 2016



Photinia x fraseri (Fraser Photinia)
Photo source: City of Los Angeles, Street Tree Selection Guide 2016

PLANT SIZE AND QUANTITY ESTIMATE

TYPE AND SPECIES	ESTIMATED QUANTITY	CONTAINER SIZE	GROWTH RATE	APPROXIMATE HEIGHT AT 5 YEARS	APPROXIMATE MATURE HEIGHT / WIDTH	APPROXIMATE TIME TO MATURITY
EVERGREEN CANOPY TREE - Dale Avenue Callistemon viminalis [Melaleuca viminalis] (Weeping Bottlebrush) or Eriobotrya deflexa (Bronze Loquat)	3	15 Gallon or 24" Box	2' / year	16'	20'-35' / 20'-30'	10 - 15 years
EVERGREEN CANOPY TREE - Pacific Street Eucalyptus conferruminata [E. lehmannii] (Bushy Yate) or Photinia x fraseri (Fraser Photinia)	2	15 Gallon or 24" Box	2'-3' / year	18'	12'-25' / 10'-25'	10 years
MEDIUM HEIGHT EVERGREEN SHRUB Phormium tenax "Variegatum" (Variegated New Zealand Flax)	28	1 Gallon or 5 Gallon	-	6'	6' / 6'	
Phormium tenax "Atropurpureum" (Purple New Zealand Flax)	31	1 Gallon or 5 Gallon	-	6'	6' / 6'	
ORNAMENTAL GRASSES Pennisetum setaceum "Rubrum" (Red Fountain Grass)	22	1 Gallon	-	4'-5'	4'-5' / 4'-5'	
Muhlenbergia dubia (Pine Muhly)	70	1 Gallon	-	1'-3'	1'-3' / 2'-3'	
SUCCULENT GROUNDCOVER Senecio serpens (Blue Chalksticks)	18	4" or 1 Gallon	-	1'	1' / 2'-3'	

Tree growth and size estimates based on information contained in: Reimer, Jeffrey L. and W. Mark. "SelectTree: A Tree Selection Guide." <http://selectree.calpoly.edu/> (site visited August 16, 2016.)
Shrub size estimates based on information contained in: Brenzel, Kathleen Norris. Sunset Western Garden Book. Menlo Park, CA: Sunset Publishing Corporation, 2001.
and San Marcos Growers. <http://www.smgrowers.com/> (site visited August 16, 2016.)

ORNAMENTAL GRASSES



Pennisetum setaceum "Rubrum" (Red Fountain Grass)
Photo source: Environmental Vision 2016



Muhlenbergia dubia (Pine Muhly)
Photo source: UC Master Gardeners 2016

MEDIUM HEIGHT EVERGREEN SHRUB



Phormium tenax (New Zealand Flax)
Photo source: Environmental Vision 2005

SUCCULENT GROUNDCOVER



Senecio serpens (Blue Chalksticks)
Photo source: Monrovia 2016