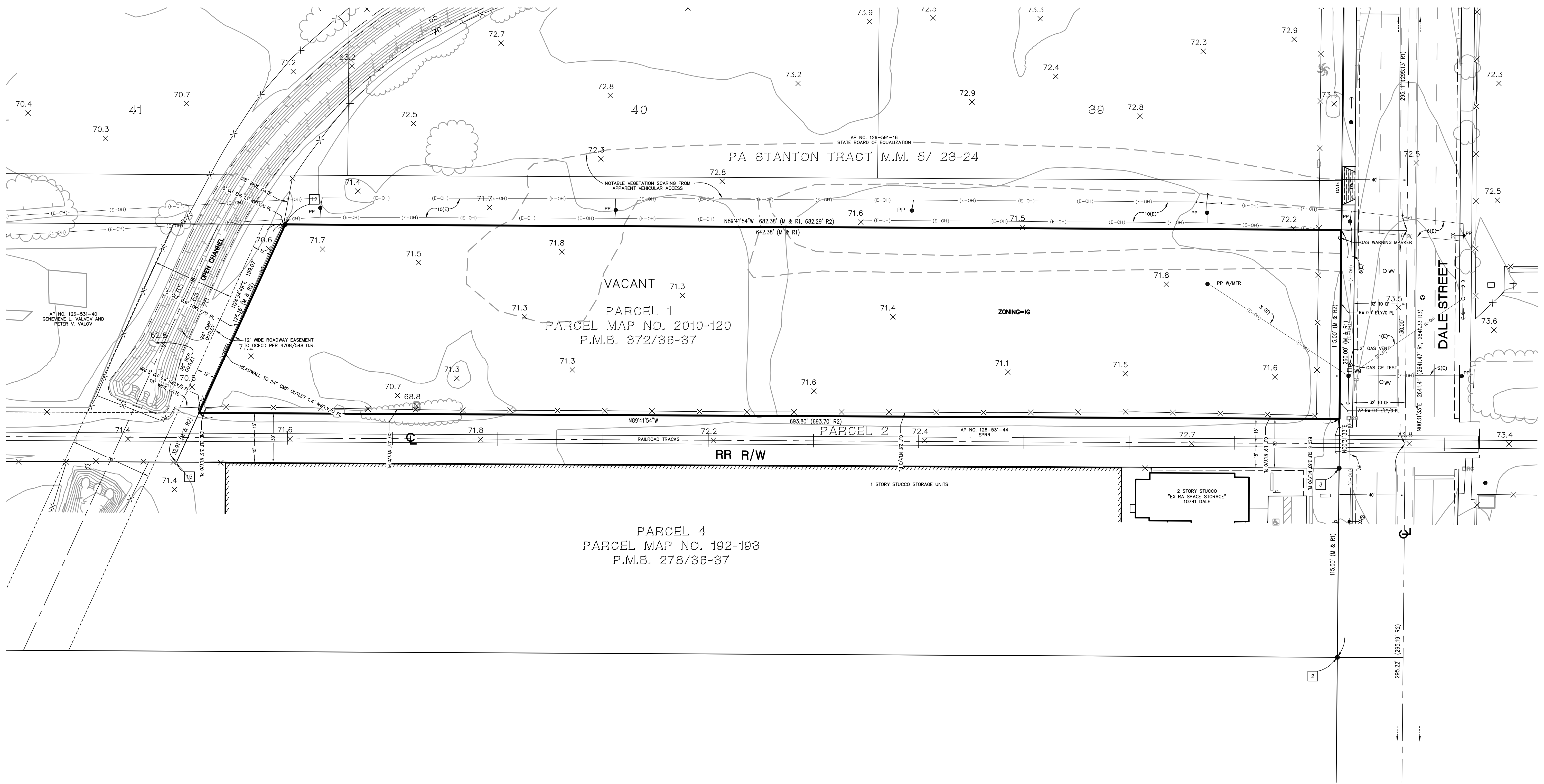
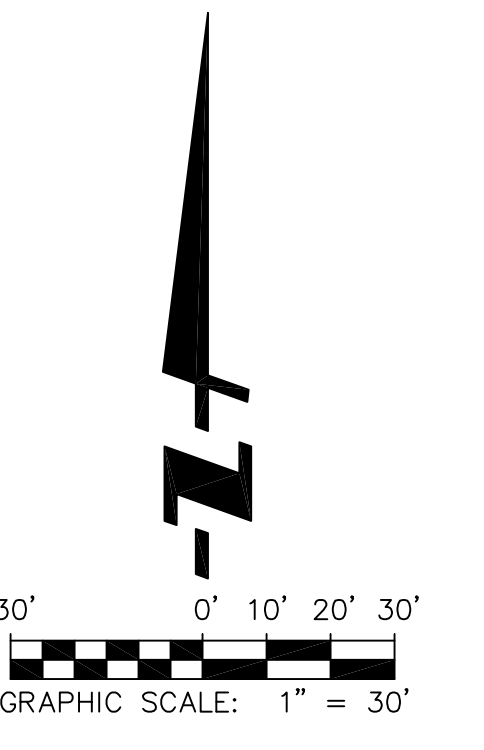


DOCKETED

Docket Number:	16-AFC-01
Project Title:	Stanton Energy Reliability Center
TN #:	214207-2
Document Title:	Appendix 1A - ALTA Survey
Description:	Application for Certification Vol. 2
Filer:	Sabrina Savala
Organization:	Stanton Energy Reliability Center, LLC
Submitter Role:	Applicant
Submission Date:	10/27/2016 10:23:29 AM
Docketed Date:	10/26/2016

Appendix 1A
ALTA Survey



- LEGEND:**
- AP ANGLE POINT
 - BEG BEGINNING
 - BW BACK OF WALK
 - CF CURB FACE
 - CL CENTERLINE
 - CLF CHAIN LINK FENCE
 - CMP CORRUGATED METAL PIPE
 - DWY DRIVEWAY
 - MTR METER
 - PP POWER POLE
 - RG RAILROAD GATE
 - SD STORM DRAIN
 - WM WATER METER
 - WV WATER VALVE
 - W VLT WATER VAULT
 - N/O, E/O NORTH OF... EAST OF...
 - S/O, W/O SOUTH OF... WEST OF...
 - (E-OH) DENOTES PLOTTED EASEMENT
 - PROPERTY LINE
 - RECORD LINES
 - CENTER LINE
 - EASEMENT LINE
 - (E-OH) OVERHEAD ELECTRICAL LINE
 - DRIVEWAY

TOPO & IMPROVEMENT PLAT

NO.	DATE	REVISION
1	8/21/2015	ADDED STORM DRAIN OUTLETS TO OPEN CHANNEL
2	8/28/2015	ADDED HEADWALL TO 24" CMP OUTLET

ALTA/ACSM LAND TITLE SURVEY

of: 10711 DALE STREET
STANTON, CALIFORNIA 92868

for: STANTON ENERGY RELIABILITY CENTER, LLC
650 BERGUT DRIVE, SUITE A,
SACRAMENTO, CA

FUSCO
ENGINEERING

16795 Van Korman, Suite 100
Irvine, California 92606
tel 949.474.1960 • fax 949.474.5315
www.fusco.com

DATE: AUGUST 19, 2015
SCALE: 1" = 30'
FN: 1299-002 ALTA.dwg
JN: 1299.002.02
DRAWN BY: CS
CHECKED BY: JLU
SHEET 2 OF 2

