

DOCKETED

Docket Number:	16-RPS-02
Project Title:	Appeal by Los Angeles Department of Water & Power re Renewables Portfolio Standard Certification Eligibility
TN #:	213387
Document Title:	328 BC Hydro Designation Letters for BP 05-020-A and BP 05-020-B (Nov. 29 10) (Bates Nos. LA001570-LA001573)
Description:	N/A
Filer:	Adriana Ayuso
Organization:	Los Angeles Department of Water and Power
Submitter Role:	Applicant
Submission Date:	8/31/2016 3:25:22 PM
Docketed Date:	8/31/2016

November 29, 2010

Delivered via Fax: 213-367-3829

Los Angeles Department of Water and Power
111 North Hope Street, Room 1250
Los Angeles, California 90051-0100

Attention: Dr. Mohammed J. Beshir
Manager of Power Systems Contracts

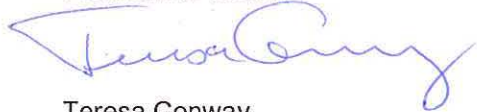
Dear Sirs:

Re: Designation under Section 4.8(d)

We refer to the Power Purchase Agreement (DWP No. BP 05-020-A) entered into between Powerex Corp. ("Powerex") and the City of Los Angeles Department of Water and Power ("LADWP") bearing the Agreement Reference Date of March 1, 2007 (the "Power Purchase Agreement"). Capitalized words and terms in this designation letter that are not defined herein will have the meanings ascribed to them in the Power Purchase Agreement.

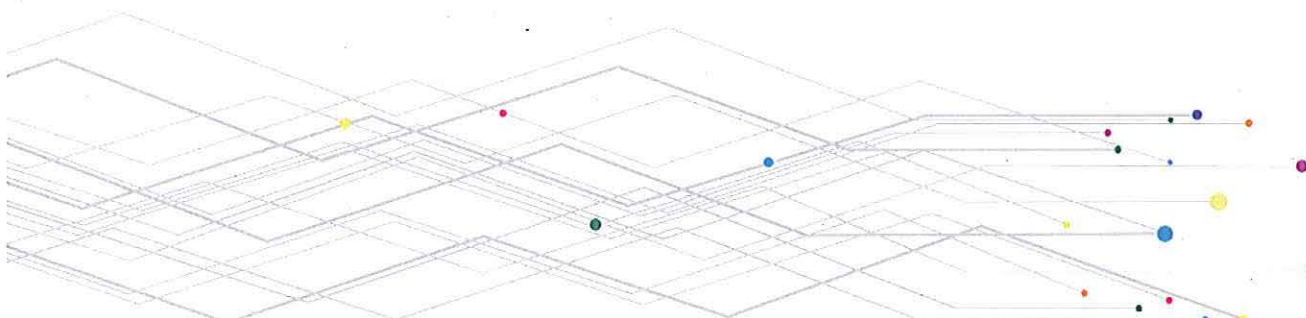
Pursuant to Section 4.8(d) of the Power Purchase Agreement, Powerex is required to designate Facilities to which Delivered Energy may be attributed, the Control Area(s) in which such Facilities are located, and the Specified Transmission Path(s) for delivering Delivered Energy attributed to such Facilities. For the Contract Year commencing April 1, 2011, Powerex hereby designates the Facilities identified or referred to in Schedule 1 as facilities to which Energy may be attributed pursuant to the Power Purchase Agreement. Each of such Facilities is located in the B.C. Control Area. The designated Specified Transmission Path is (i) BCHA Transmission (formerly known as "BCTC") within the B.C. Control Area to the British Columbia-U.S. border, (ii) BPA transmission from the British Columbia-U.S. border to BPA's Big Eddy substation, and (iii) BPA transmission from Big Eddy to the Point of Delivery.

Sincerely,
POWEREX CORP.



Teresa Conway,
President and CEO

/ijh



LA001570

SCHEDULE 1

Facilities

- (1) Mears Creek Power Plant (Small Hydro) – Nominal Rating: 3.8 MW
- (2) Furry Creek Power Plant (Small Hydro) – Nominal Rating: 10.4 MW
- (3) McNair Creek Power Plant (Small Hydro) – Nominal Rating: 9.9 MW
- (4) Brandywine Creek Power Plant (Small Hydro) – Nominal Rating: 7.6 MW
- (5) Hystad Creek Power Plant (Small Hydro) – Nominal Rating: 6.0 MW
- (6) Vancouver Landfill Gas Power Plant (Phase 1) – Nominal Rating: 5.5 MW
- (7) Vancouver Landfill Gas Power Plant (Phase 2) – Nominal Rating: 1.9 MW
- (8) Zeballos Lake Power Plant (Small Hydro) – Nominal Rating: 21.9 MW
- (9) Hauer Creek Power Plant (Small Hydro) – Nominal Rating: 2.4 MW
- (10) Upper Mamquam Power Plant (Small Hydro) – Nominal Rating: 25.0 MW
- (11) South Cranberry Creek Power Plant (Small Hydro) – Nominal Rating: 8.5 MW
- (12) Fire Creek Power Plant (Small Hydro) – Nominal Rating: 23.0 MW
- (13) Tipella Creek Power Plant (Small Hydro) – Nominal Rating: 18.0 MW
- (14) Douglas Creek Power Plant (Small Hydro) – Nominal Rating: 27.0 MW
- (15) Stokke Creek Power Plant (Small Hydro) – Nominal Rating: 22.0 MW
- (16) Raging River Power Plant (Small Hydro) – Nominal Rating: 1.8 MW
- (17) Marion 3 Creek Power Plant (Small Hydro) – Nominal Rating: 4.6 MW
- (18) South Sutton Creek Power Plant (Small Hydro) – Nominal Rating: 4.9 MW
- (19) China Creek Power Plant (Small Hydro) – Nominal Rating: 6.3 MW
- (20) Cypress Creek Power Plant (Small Hydro) – Nominal Rating: 2.8 MW
- (21) Purcell Power Project (Biomass) – Nominal Rating: 43.2 MW
- (22) Armstrong Biomass Co-Gen – Nominal Rating: 20.4 MW
- (23) Ten (10) other hydroelectric generating facilities located in the B.C. Control Area, each with a nameplate capacity of 30 MW or less, owned and operated by BC Hydro and having an aggregate nameplate capacity of 145 MW.

November 29, 2010

Delivered via Fax: 213-367-3829

Los Angeles Department of Water and Power
111 North Hope Street, Room 1250
Los Angeles, California 90051-0100

Attention: Dr. Mohammed J. Beshir
Manager of Power Systems Contracts

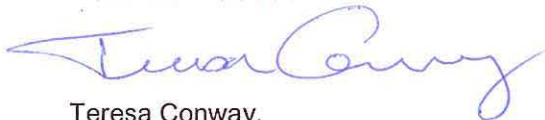
Dear Sirs:

Re: Designation under Section 4.8(d)

We refer to the Power Purchase Agreement (DWP No. BP 05-020-B) entered into between Powerex Corp. ("Powerex") and the City of Los Angeles Department of Water and Power ("LADWP") bearing the Agreement Reference Date of March 1, 2007 (the "Power Purchase Agreement"). Capitalized words and terms in this designation letter that are not defined herein will have the meanings ascribed to them in the Power Purchase Agreement.

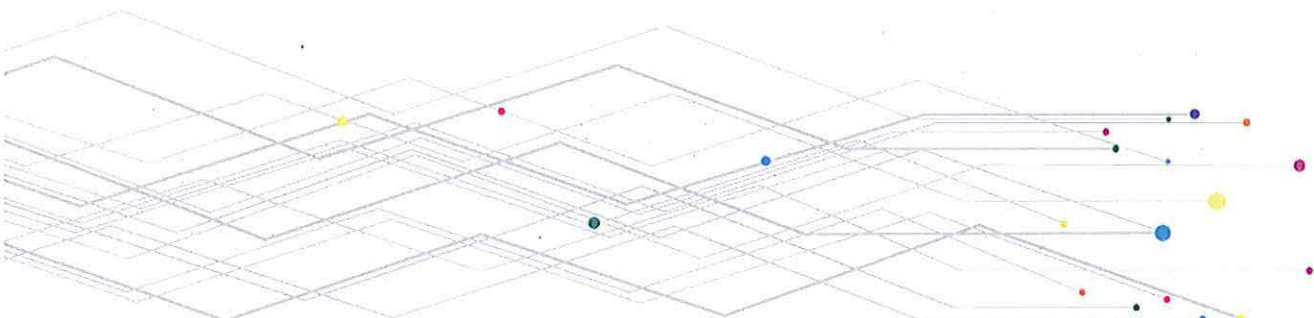
Pursuant to Section 4.8(d) of the Power Purchase Agreement, Powerex is required to designate Facilities to which Delivered Energy may be attributed, the Control Area(s) in which such Facilities are located, and the Specified Transmission Path(s) for delivering Delivered Energy attributed to such Facilities. For the Contract Year commencing April 1, 2011, Powerex hereby designates the Facilities identified or referred to in Schedule 1 as facilities to which Energy may be attributed pursuant to the Power Purchase Agreement. Each of such Facilities is located in the B.C. Control Area. The designated Specified Transmission Path is (i) BCHA Transmission (formerly known as "BCTC") within the B.C. Control Area to the British Columbia-U.S. border, (ii) BPA transmission from the British Columbia-U.S. border to BPA's Big Eddy substation, and (iii) BPA transmission from Big Eddy to the Point of Delivery.

Sincerely,
POWEREX CORP.



Teresa Conway,
President and CEO

/ijh



LA001572

SCHEDULE 1

Facilities

- (1) Mears Creek Power Plant (Small Hydro) – Nominal Rating: 3.8 MW
- (2) Furry Creek Power Plant (Small Hydro) – Nominal Rating: 10.4 MW
- (3) McNair Creek Power Plant (Small Hydro) – Nominal Rating: 9.9 MW
- (4) Brandywine Creek Power Plant (Small Hydro) – Nominal Rating: 7.6 MW
- (5) Hystad Creek Power Plant (Small Hydro) – Nominal Rating: 6.0 MW
- (6) Vancouver Landfill Gas Power Plant (Phase 1) – Nominal Rating: 5.5 MW
- (7) Vancouver Landfill Gas Power Plant (Phase 2) – Nominal Rating: 1.9 MW
- (8) Zeballos Lake Power Plant (Small Hydro) – Nominal Rating: 21.9 MW
- (9) Hauer Creek Power Plant (Small Hydro) – Nominal Rating: 2.4 MW
- (10) Upper Mamquam Power Plant (Small Hydro) – Nominal Rating: 25.0 MW
- (11) South Cranberry Creek Power Plant (Small Hydro) – Nominal Rating: 8.5 MW
- (12) Fire Creek Power Plant (Small Hydro) – Nominal Rating: 23.0 MW
- (13) Tipella Creek Power Plant (Small Hydro) – Nominal Rating: 18.0 MW
- (14) Douglas Creek Power Plant (Small Hydro) – Nominal Rating: 27.0 MW
- (15) Stokke Creek Power Plant (Small Hydro) – Nominal Rating: 22.0 MW
- (16) Raging River Power Plant (Small Hydro) – Nominal Rating: 1.8 MW
- (17) Marion 3 Creek Power Plant (Small Hydro) – Nominal Rating: 4.6 MW
- (18) South Sutton Creek Power Plant (Small Hydro) – Nominal Rating: 4.9 MW
- (19) China Creek Power Plant (Small Hydro) – Nominal Rating: 6.3 MW
- (20) Cypress Creek Power Plant (Small Hydro) – Nominal Rating: 2.8 MW
- (21) Purcell Power Project (Biomass) – Nominal Rating: 43.2 MW
- (22) Armstrong Biomass Co-Gen – Nominal Rating: 20.4 MW
- (23) Ten (10) other hydroelectric generating facilities located in the B.C. Control Area, each with a nameplate capacity of 30 MW or less, owned and operated by BC Hydro and having an aggregate nameplate capacity of 145 MW.