

DOCKETED

Docket Number:	15-AFC-02
Project Title:	Mission Rock Energy Center
TN #:	212235
Document Title:	Formal Request for Information
Description:	Cumulative Impact Assessment for Mission Rock Energy Center (MREC)
Filer:	Cathy Hickman
Organization:	California Energy Commission
Submitter Role:	Commission Staff
Submission Date:	7/11/2016 2:14:55 PM
Docketed Date:	7/11/2016

CALIFORNIA ENERGY COMMISSION

1516 NINTH STREET
SACRAMENTO, CA 95814-5512
www.energy.ca.gov



July 5, 2016

Dante Doberneck
City of Santa Paula
Planning Department
200 S 10th Street
Santa Paula, CA 93060

RE: Formal Request for Information - Cumulative Impact Assessment for the Mission Rock Energy Center (15-AFC-02)

Dear Mr. Doberneck,

The Warren-Alquist Act (Public Resources Code § 25000 et. seq.) gives the California Energy Commission (Energy Commission) the exclusive jurisdiction over the permitting of thermal power plants with a net generating capacity of 50 megawatts (MW) or larger and appurtenant related facilities to serve it. The Energy Commission is the lead agency under the California Environmental Quality Act (CEQA) for facilities under its jurisdiction. The Energy Commission is considering an application for certification (AFC) from Mission Rock Energy Center, LLC to construct, own, and operate the Mission Rock Energy Center (MREC or project). As part of its CEQA analysis for the proposed project, the potential for significant cumulative impacts will be assessed.

The project would be located on a 9.79-acre parcel at 1025 Mission Rock Road in unincorporated Ventura County, approximately 1.5 miles southwest of the city of Santa Paula. The site is currently used as recreational vehicle and boat storage and is paved with asphalt concrete. Construction laydown and parking would be on a 2.89-acre site immediately north of the MREC site. The project applicant's entire AFC is available on the Energy Commission's website at:

<http://www.energy.ca.gov/sitingcases/missionrock/index.html>. If MREC is approved and developed, project construction would occur over a 23-month period, from November 2018 through September 2020. Commercial operation of MREC is expected by September 2020.

To assess the potential for cumulative impacts, Energy Commission staff requests a list of past, current, and probable future projects in the city of Santa Paula. Staff is looking for projects with applications that have already been deemed complete by the planning department and require a discretionary action pursuant to CEQA. Characteristics of the information requested include: project name, description, location, current status, estimated or actual construction dates and duration (if possible), contact information of assigned planner, whether an environmental document is or would be published and is available, and any web links to helpful project documents or an associated website. Staff has attached an example of the information needed on the projects in Santa Paula

Dante Doberneck
July 5, 2016
Page 2 of 2

that could be included in the MREC's Master Cumulative Project List; currently being assembled.

Please provide this requested information by August 5, 2016. Send your responses to my attention, and if you have any questions about this request, please contact me via email at ashley.gutierrez@energy.ca.gov or telephone at 916-651-8839. Thank you in advance for your time and assistance.

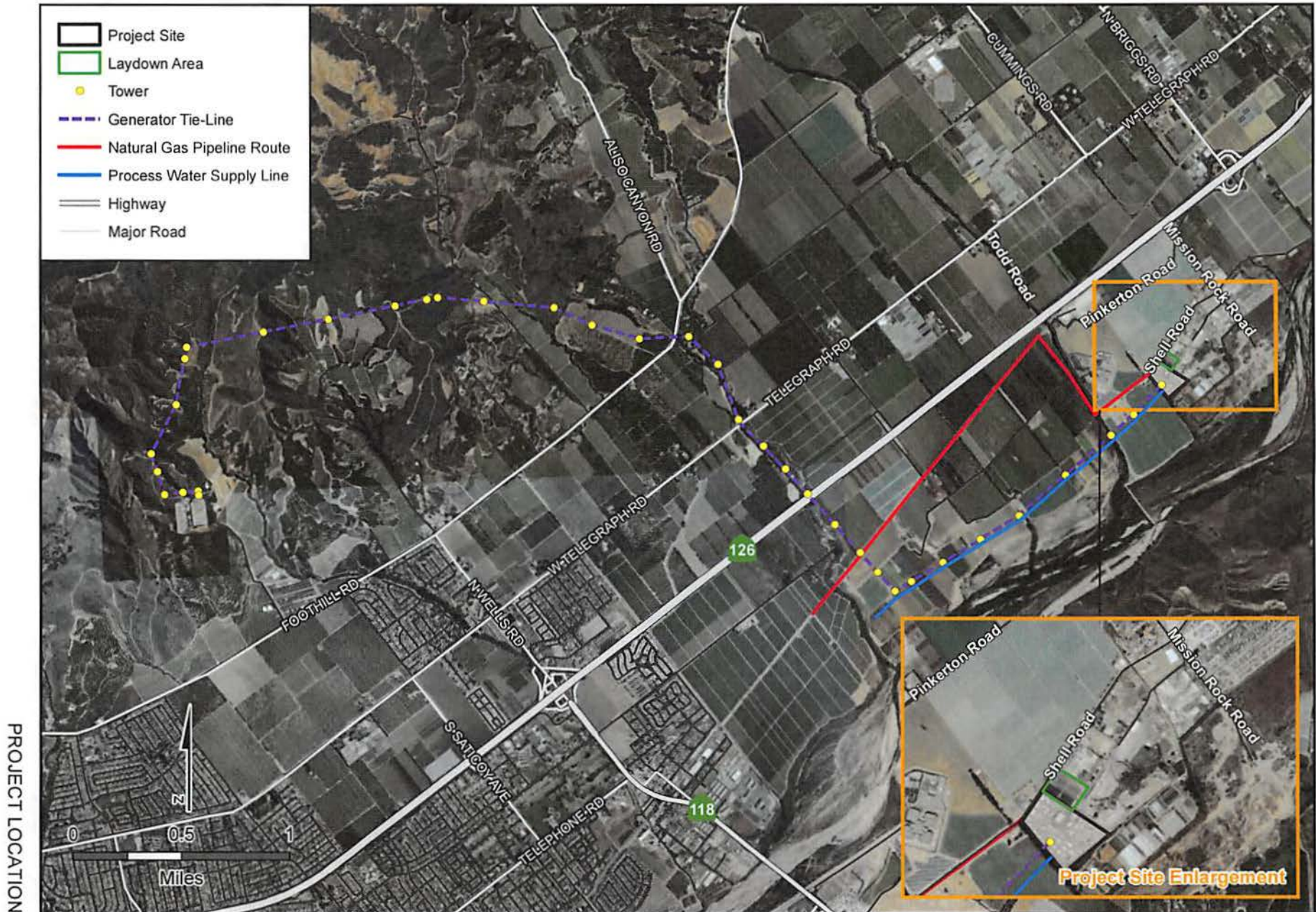
Sincerely,

Ashley Gutierrez
Energy Analyst
California Energy Commission
Siting, Transmission, and Environmental Protection Division
1516 Ninth Street, MS 40
Sacramento, CA 95814
ashley.gutierrez@energy.ca.gov

Tele: (916) 651-8839
Fax: (916) 651-8868

Enclosures:
Project Location Figure (based on Figure 5.6 from the AFC)
Example list of cumulative projects

PROJECT LOCATION FIGURE
Mission Rock Energy Center - Project Location



PROJECT LOCATION

Project Title	Description	Project Address/Location	Status	Contact Info/Planner	Environmental Doc Available/Links
Fox Hollow	<p>The project is limited to construction of two stormwater outfalls below the top of bank and removal of trees. The stormwater outfall project involves the installation of a 15 inch and 36 inch corrugated metal pipe placed approx. 190 feet apart, installation of angular rock of an average diameter of four inches at the outlet of the pipes, and removal of 19 oak trees consisting of primarily coast live oak located at 1615 Fulton Road. The CDFW is executing a Lake and Streambed Alteration Agreement No. 1600-2016-0025-R3 pursuant to Section 1602 of the Fish and Game Code to the project Applicant, Charity Wagner/CV Santa Rosa, LLC.</p>	1615 Fulton Road, Santa Rosa	In Process	Stephanie Buss CDFW 707-944-5502 7329 Silverado Trail Napa, CA 94558	<p>NOD- http://ci.santa-rosa.ca.us/doclib/agendas_packets_minutes/Documents/Fox_Hollow.pdf</p>
Spring Lake Village	<p>Expansion of the existing Spring Lake Village Continuing Care Retirement Community. Project would include 24 independent living units, community building, outdoor pool and patio, outdoor common, parking areas, paved walking paths, landscaping, drainage features, lighting, fencing, and retaining walls. Vehicle access to be provided off Los Alamos Road. Off-site pedestrian facility improvements would be constructed to facilitate pedestrian walkability between the project site and the existing Spring Lake Village community on Montgomery Drive. Off-site storm water facilities would be constructed within and adjacent to Melita Road</p>	Highway 12/Los Alamos Road/Melita Road	In Process	Patrick Streeter City of Santa Rosa (707) 543-4342 100 Santa Rosa Avenue, Room 3 Santa Rosa, CA 95402	NOP